

Cattle on Feed

Released July 24, 2009, by the National Agricultural Statistics Service (NASS), Agricultural Statistics Board, U.S. Department of Agriculture. For information on *Cattle on Feed* call Jason Hardegree at (202) 720-3040, office hours 7:30 a.m. to 4:00 p.m. ET.

U.S. Cattle on Feed Down 5 Percent

Cattle and calves on feed for slaughter market in the United States for feedlots with capacity of 1,000 or more head totaled 9.8 million head on July 1, 2009. The inventory was 5 percent below July 1, 2008. The inventory included 5.99 million steers and steer calves, down 7 percent from the previous year. This group accounted for 61 percent of the total inventory. Heifers and heifer calves accounted for 3.72 million head, down 3 percent from 2008.

Placements in feedlots during June totaled 1.39 million, 8 percent below 2008. Net placements were 1.33 million head. During June, placements of cattle and calves weighing less than 600 pounds were 315,000, 600-699 pounds were 290,000, 700-799 pounds were 371,000 and 800 pounds and greater were 415,000. This is the second lowest placements for the month of June since the series began in 1996.

Marketings of fed cattle during June totaled 1.99 million, 1 percent above 2008. This is the second lowest fed cattle marketings for the month of June since the series began in 1996.

Other disappearance totaled 57,000 during June, 5 percent below 2008.

U.S. All Cattle on Feed Down 5 Percent

Cattle on feed July 1, 2009, from all feedlots in the United States, totaled 11.6 million, down 5 percent from the 12.2 million on July 1, 2008. Cattle on feed in feedlots with 1,000 or more head accounted for 84 percent of the total cattle on feed on July 1, 2009, down slightly from July 1, 2008.

**Cattle on Feed: Number on Feed, Placements, Marketings, and
Other Disappearance, 1,000+ Capacity Feedlots,
United States, July 1, 2008-2009**

Item	Number		2009 as %
	2008	2009	of 2008
	<i>1,000 Head</i>	<i>1,000 Head</i>	<i>Percent</i>
On Feed Jun 1	10,815	10,407	96
Placed on Feed During Jun	1,518	1,391	92
Fed Cattle Marketed During Jun	1,978	1,989	101
Other Disappearance During Jun	60	57	95
On Feed Jul 1	10,295	9,752	95

**Cattle on Feed: Number on Feed, Placements, Marketings, and
Other Disappearance, 1,000+ Capacity Feedlots,
United States, June 1, 2008-2009**

Item	Number		2009 as %
	2008	2009	of 2008
	<i>1,000 Head</i>	<i>1,000 Head</i>	<i>Percent</i>
On Feed May 1	11,135	10,822	97
Placed on Feed During May	1,900	1,638	86
Fed Cattle Marketed During May	2,140	1,952	91
Other Disappearance During May	80	101	126
On Feed Jun 1	10,815	10,407	96

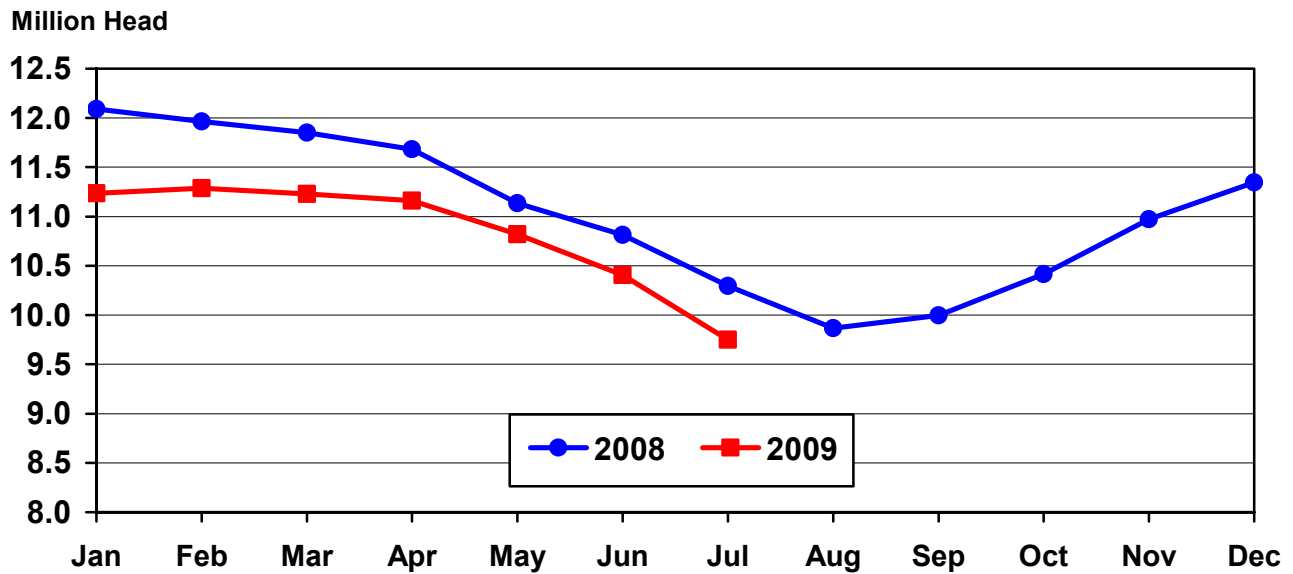
**Cattle on Feed: Number on Feed by Class, 1,000+ Capacity Feedlots,
United States, July 1, 2008-2009**

Item	Number		2009 as % of
	2008	2009	2008
	<i>1,000 Head</i>	<i>1,000 Head</i>	<i>Percent</i>
Class on Feed Jul 1			
Steers and Steer Calves	6,432	5,992	93
Heifers and Heifer Calves	3,823	3,719	97
Cows and Bulls	40	41	103

**Cattle on Feed: Number on Feed, 1,000+ Capacity Feedlots,
by Month, State, and United States 2008-2009**

State	Jul 1, 2008	Jun 1, 2009	Jul 1, 2009		
			Number	as % of 2008	as % of Jun
	<i>1,000 Head</i>	<i>1,000 Head</i>	<i>1,000 Head</i>	<i>Percent</i>	<i>Percent</i>
AZ	356	301	287	81	95
CA	520	470	460	88	98
CO	820	980	910	111	93
ID	200	205	200	100	98
IA	500	530	520	104	98
KS	2,080	2,080	1,920	92	92
NE	2,050	2,110	1,920	94	91
NM	154	105	94	61	90
OK	300	310	295	98	95
SD	185	220	205	111	93
TX	2,660	2,610	2,490	94	95
WA	140	156	146	104	94
Oth Sts	330	330	305	92	92
US	10,295	10,407	9,752	95	94

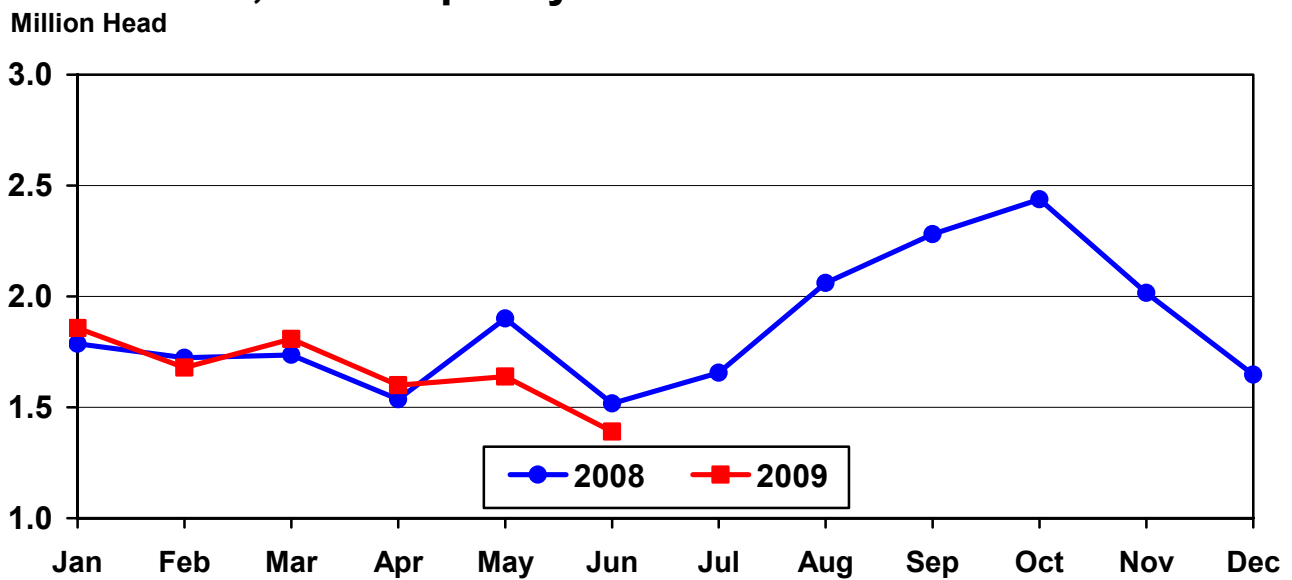
**United States Cattle on Feed
1,000+ Capacity Feedlots**



**Cattle on Feed: Number Placed on Feed, 1,000+ Capacity Feedlots,
by Month, State, and United States 2008-2009**

State	During Jun 2008	During May 2009	During Jun 2009		
			Number	as % of 2008	as % of May
	<i>1,000 Head</i>	<i>1,000 Head</i>	<i>1,000 Head</i>	<i>Percent</i>	<i>Percent</i>
AZ	32	26	21	66	81
CA	52	74	43	83	58
CO	85	140	125	147	89
ID	33	35	32	97	91
IA	41	60	59	144	98
KS	330	345	305	92	88
NE	290	310	270	93	87
NM	32	16	17	53	106
OK	57	67	44	77	66
SD	21	40	25	119	63
TX	460	455	380	83	84
WA	28	31	30	107	97
Oth Sts	57	39	40	70	103
US	1,518	1,638	1,391	92	85

**United States Cattle on Feed
1,000+ Capacity Feedlots Number Placed**



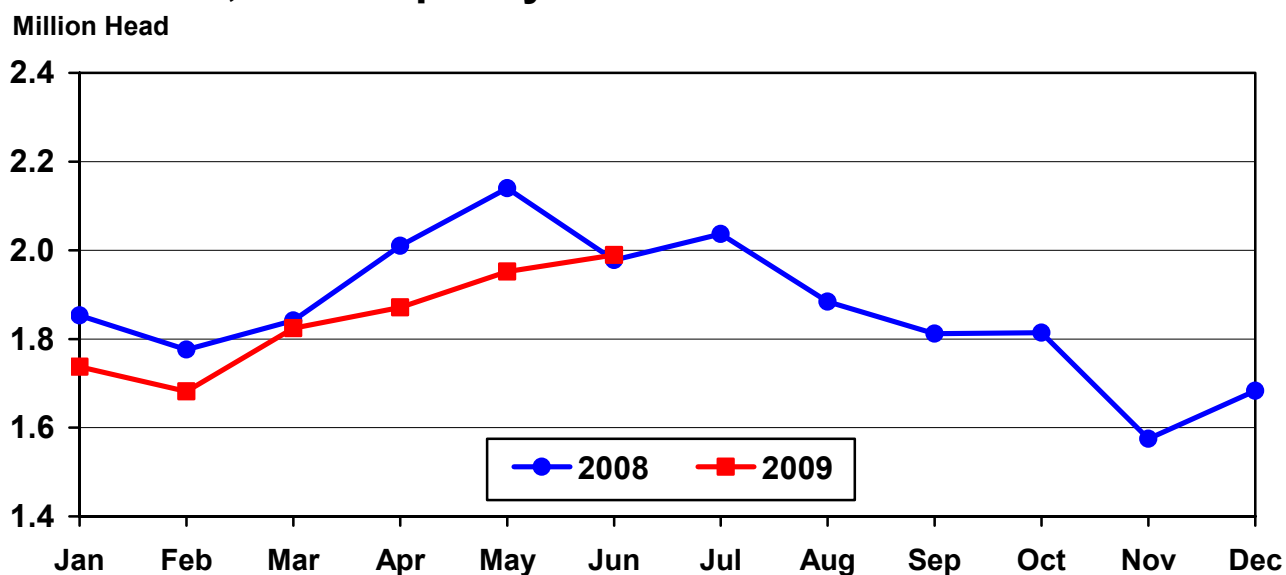
**Cattle on Feed: Number Placed on Feed by Weight Group, 1,000+ Capacity
Feedlots, by Month, State, and United States, 2008-2009**

State	During June									
	Under 600		600-699		700-799		800 Plus		Total	
	2008	2009	2008	2009	2008	2009	2008	2009	2008	2009
	<i>1,000 Head</i>	<i>1,000 Head</i>	<i>1,000 Head</i>	<i>1,000 Head</i>	<i>1,000 Head</i>	<i>1,000 Head</i>	<i>1,000 Head</i>	<i>1,000 Head</i>	<i>1,000 Head</i>	<i>1,000 Head</i>
CO	20	15	10	20	25	35	30	55	85	125
KS	60	55	75	70	100	95	95	85	330	305
NE	40	50	40	55	70	55	140	110	290	270
TX	135	110	140	95	120	125	65	50	460	380
Oth Sts	110	85	60	50	68	61	115	115	353	311
US	365	315	325	290	383	371	445	415	1,518	1,391
State	During May									
	Under 600		600-699		700-799		800 Plus		Total	
	2008	2009	2008	2009	2008	2009	2008	2009	2008	2009
	<i>1,000 Head</i>	<i>1,000 Head</i>	<i>1,000 Head</i>	<i>1,000 Head</i>	<i>1,000 Head</i>	<i>1,000 Head</i>	<i>1,000 Head</i>	<i>1,000 Head</i>	<i>1,000 Head</i>	<i>1,000 Head</i>
CO	25	25	30	25	45	45	50	45	150	140
KS	50	65	70	70	130	110	160	100	410	345
NE	40	30	70	60	85	80	175	140	370	310
TX	105	170	125	100	210	110	120	75	560	455
Oth Sts	120	105	55	50	95	88	140	145	410	388
US	340	395	350	305	565	433	645	505	1,900	1,638

**Cattle on Feed: Number Marketed, 1,000+ Capacity Feedlots,
by Month, State, and United States 2008-2009**

State	During Jun 2008	During May 2009	During Jun 2009		
			Number	as % of 2008	as % of May
	<i>1,000 Head</i>	<i>1,000 Head</i>	<i>1,000 Head</i>	<i>Percent</i>	<i>Percent</i>
AZ	40	35	34	85	97
CA	55	52	51	93	98
CO	175	145	190	109	131
ID	47	39	36	77	92
IA	60	68	67	112	99
KS	430	425	455	106	107
NE	475	450	440	93	98
NM	27	28	27	100	96
OK	61	71	58	95	82
SD	38	44	39	103	89
TX	480	510	490	102	96
WA	32	35	39	122	111
Oth Sts	58	50	63	109	126
US	1,978	1,952	1,989	101	102

United States Cattle on Feed 1,000+ Capacity Feedlots Number Marketed



**Cattle on Feed: Other Disappearance, 1,000+ Capacity Feedlots,
by Month, State, and United States 2008-2009**

State	During Jun 2008	During May 2009	During Jun 2009		
			Number	as % of 2008	as % of May
	<i>1,000 Head</i>	<i>1,000 Head</i>	<i>1,000 Head</i>	<i>Percent</i>	<i>Percent</i>
AZ	1	1	1	100	100
CA	2	2	2	100	100
CO	10	25	5	50	20
ID	1	1	1	100	100
IA	1	2	2	200	100
KS	10	20	10	100	50
NE	15	20	20	133	100
NM	1	3	1	100	33
OK	1	1	1	100	100
SD	3	6	1	33	17
TX	10	15	10	100	67
WA	1	1	1	100	100
Oth Sts	4	4	2	50	50
US	60	101	57	95	56

**Cattle on Feed: Number on Feed by Class, 1,000+ Capacity Feedlots,
by Quarter, State, and United States, 2008-2009**

State	Steers & Steer Calves			Heifers & Heifer Calves			Cows and Bulls		
	Jul 1, 2008	Apr 1, 2009	Jul 1, 2009	Jul 1, 2008	Apr 1, 2009	Jul 1, 2009	Jul 1, 2008	Apr 1, 2009	Jul 1, 2009
	<i>1,000 Head</i>	<i>1,000 Head</i>	<i>1,000 Head</i>	<i>1,000 Head</i>	<i>1,000 Head</i>	<i>1,000 Head</i>	<i>1,000 Head</i>	<i>1,000 Head</i>	<i>1,000 Head</i>
AZ	354	329	286	2	1	1	0	0	0
CA	470	400	410	50	45	50	0	0	0
CO	485	670	615	330	365	290	5	5	5
ID	112	103	105	86	97	94	2	10	1
IA	335	*380	365	165	*150	155	0	0	0
KS	1,135	1,190	970	940	1,085	945	5	5	5
NE	1,270	1,400	1,130	775	910	785	5	10	5
NM	78	72	58	76	65	36	0	0	0
OK	190	190	173	110	140	122	0	0	0
SD	93	125	105	75	85	80	17	15	20
TX	1,600	1,780	1,500	1,059	1,028	989	1	2	1
WA	65	90	80	74	69	65	1	1	1
Oth Sts	245	255	195	81	87	107	4	3	3
US	6,432	*6,984	5,992	3,823	*4,127	3,719	40	51	41

*Revised.

**Cattle on Feed: Total Number on Feed, United States,
July 1, 2008-2009**

State	Number		2009 as % of
	2008	2009	2008
	<i>1,000 Head</i>	<i>1,000 Head</i>	<i>Percent</i>
US	12,200	11,600	95

Terms and Definitions of Cattle on Feed Estimates

Cattle on feed are animals being fed a ration of grain, silage, hay and/or protein supplement for slaughter market that are expected to produce a carcass that will grade select or better. It excludes cattle being "backgrounded only" for later sale as feeders or later placement in another feedlot.

Placements are cattle put into a feedlot, fed a ration which will produce a carcass that will grade select or better, and are intended for the slaughter market.

Marketings are cattle shipped out of feedlots to a slaughter market.

Other disappearance includes death loss, movement from feedlots to pasture, and shipments to other feedlots for further feeding.

Reliability of Cattle on Feed Estimates

Survey Procedures: During January and July all known feedlots in the U.S. with capacity of 1,000 or more head are surveyed to provide data for cattle on feed estimates. During the other months, all known feedlots from 16 States are surveyed. The 16 States account for 98 percent of the cattle on feed in feedlots with capacity of 1,000 or more head.

Estimating Procedures: These cattle on feed estimates were prepared by the Agricultural Statistics Board after reviewing recommendations and analysis submitted by each State office. Regional and State survey data were reviewed for reasonableness with each other and with estimates from the previous month when setting the current estimates.

Revision Policy: Revisions to previous estimates are made to improve month to month relationships. Estimates for the previous month are subject to revision in all States each month when current estimates are made. In February, all monthly estimates for the previous year, and the number of feedlots and annual marketings from two years ago are reviewed and subject to revisions. The reviews are primarily based on slaughter data, state check-off or brand data, and any other data that may have been received after the original estimate was made. Estimates will also be reviewed after data from the Census of Agriculture are available. No revisions will be made after that date and estimates become final.

Reliability: Since all 1,000+ capacity cattle on feed operators in every State are not included in the monthly survey, survey estimates are subject to sampling variability. Survey results are also subject to non-sampling errors such as omissions, duplications, and mistakes in reporting, recording, and processing the data. The effects of these errors cannot be measured directly. They are minimized through rigid quality controls in the data collection process and through a careful review of all reported data for consistency and reasonableness.

To assist users in evaluating the reliability of estimates in this report, the "**Root Mean Square Error**" is shown for selected items in the following table. The "Root Mean Square Error" is a statistical measure based on past performance and is computed using the differences between first and latest estimates. The "Root Mean Square Error" for cattle on feed inventory estimates over the past 24 months is less than 0.1 percent (0.04). This means that chances are 2 out of 3 that the final estimate will not be above or below the current estimate of 9.8 million head by more than 0.04 percent. Chances are 9 out of 10 that the difference will not exceed 0.1 percent.

The following table also shows a 24 month record of the range of differences between first and latest estimates for selected items. Using estimates of number on feed as an example, changes between the first estimate and the latest estimate during the past 24 months have averaged 2,000 head, ranging from 0 to 18,000 head. During this period the initial estimate has been above the final estimate 1 time and has been below the final estimate 5 times. This does not imply that the initial estimate is likely to understate or overstate final inventory.

Reliability of Monthly Cattle on Feed Estimates ¹

Item	Root Mean Square Error	90% Confidence Level		Difference Between First and Final Estimates			Number of Months	
		Percent	(000) Head	Average	Smallest	Largest	First Above Final	First Below Final
	<i>Percent</i>	<i>Percent</i>	<i>1,000 Head</i>	<i>1,000 Head</i>	<i>1,000 Head</i>	<i>1,000 Head</i>	<i>Number</i>	<i>Number</i>
Number on Feed	0.0	0.1	9.8	2	0	18	1	5
Placements	0.2	0.3	4.2	2	0	10	2	6
Marketings	0.2	0.3	6.0	1	0	10	4	2

¹ Based on data for the past 24 months.

Information Contacts

Listed below are the commodity specialists in the Livestock Branch of the National Agricultural Statistics Service to contact for additional information.

Dan Kerestes, Chief, Livestock Branch (202) 720-3570

Livestock Section

Scott Hollis, Head, Livestock Section (202) 690-2424
 Jim Collom - Dairy Products (202) 690-3236
 Joe Gaynor - Dairy Products Prices (202) 690-2168
 Jason Hardegree - Cattle, Cattle on Feed (202) 720-3040
 Sherry Bertramsen - Livestock Slaughter (515) 284-4340
 Everett Olbert - Sheep and Goats (202) 720-4751
 Mike Miller - Milk Production and Milk Cows (202) 720-3278
 Nick Streff - Hogs and Pigs (202) 720-3106

ACCESS TO REPORTS!!

For your convenience, there are several ways to obtain NASS reports, data products, and services:

INTERNET ACCESS

All NASS reports are available free of charge. For free access, connect to the Internet and go to the NASS Home Page at: **www.nass.usda.gov**.

E-MAIL SUBSCRIPTION

All NASS reports are available by subscription free of charge direct to your e-mail address. Starting with the NASS Home Page at **www.nass.usda.gov**, under the right navigation, *Receive reports by Email*, click on **National** or **State**. Follow the instructions on the screen.

PRINTED REPORTS OR DATA PRODUCTS

CALL OUR TOLL-FREE ORDER DESK: 800-999-6779 (U.S. and Canada)
Other areas, please call 703-605-6220 FAX: 703-605-6900
(Visa, MasterCard, check, or money order acceptable for payment.)

ASSISTANCE

For **assistance** with general agricultural statistics or further information about NASS or its products or services, contact the **Agricultural Statistics Hotline** at **800-727-9540**, 7:30 a.m. to 4:00 p.m. ET, or e-mail: **nass@nass.usda.gov**.

The U.S. Department of Agriculture (USDA) prohibits discrimination in all its programs and activities on the basis of race, color, national origin, age, disability, and where applicable, sex, marital status, familial status, parental status, religion, sexual orientation, genetic information, political beliefs, reprisal, or because all or a part of an individual's income is derived from any public assistance program. (Not all prohibited bases apply to all programs.) Persons with disabilities who require alternative means for communication of program information (Braille, large print, audiotape, etc.) should contact USDA's TARGET Center at (202) 720-2600 (voice and TDD).

To file a complaint of discrimination, write to USDA, Director, Office of Civil Rights, 1400 Independence Avenue, S.W., Washington, D.C. 20250-9410, or call (800) 795-3272 (voice) or (202) 720-6382 (TDD). USDA is an equal opportunity provider and employer.