



Cattle on Feed

Released August 21, 2009, by the National Agricultural Statistics Service (NASS), Agricultural Statistics Board, U.S. Department of Agriculture. For information on *Cattle on Feed* call Jason Hardegree at (202) 720-3040, office hours 7:30 a.m. to 4:00 p.m. ET.

U.S. Cattle on Feed Down 2 Percent

Cattle and calves on feed for slaughter market in the United States for feedlots with capacity of 1,000 or more head totaled 9.6 million head on August 1, 2009. The inventory was 2 percent below August 1, 2008.

Placements in feedlots during July totaled 1.86 million, 13 percent above 2008. Net placements were 1.82 million head. During July, placements of cattle and calves weighing less than 600 pounds were 455,000, 600-699 pounds were 365,000, 700-799 pounds were 458,000 and 800 pounds and greater were 585,000.

Marketings of fed cattle during July totaled 1.93 million, 5 percent below 2008. This is the third lowest marketings for the month of July since the series began in 1996.

Other disappearance totaled 43,000 during July, 4 percent below 2008. This is the lowest other disappearance for the month of July since the series began in 1996.

**Cattle on Feed: Number on Feed, Placements, Marketings, and
Other Disappearance, 1,000+ Capacity Feedlots,
United States, August 1, 2008-2009**

Item	Number		2009 as %
	2008	2009	of 2008
	<i>1,000 Head</i>	<i>1,000 Head</i>	<i>Percent</i>
On Feed Jul 1	10,295	9,752	95
Placed on Feed During Jul	1,656	1,863	113
Fed Cattle Marketed During Jul	2,037	1,928	95
Other Disappearance During Jul	45	43	96
On Feed Aug 1	9,869	9,644	98

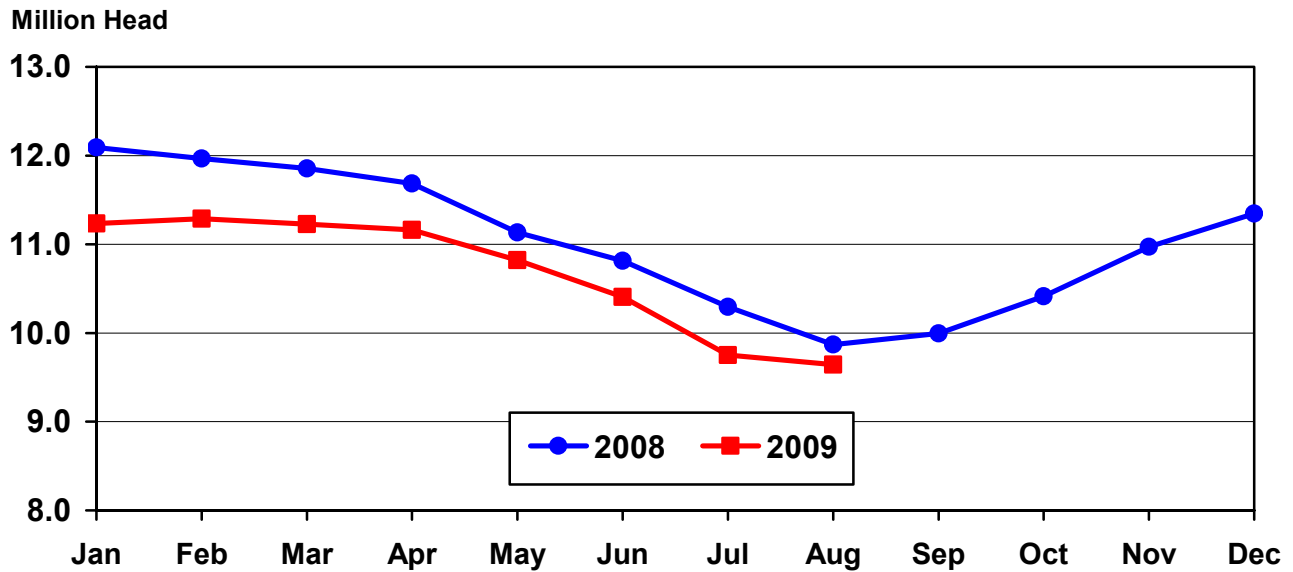
**Cattle on Feed: Number on Feed, Placements, Marketings, and
Other Disappearance, 1,000+ Capacity Feedlots,
United States, July 1, 2008-2009**

Item	Number		2009 as %
	2008	2009	of 2008
	<i>1,000 Head</i>	<i>1,000 Head</i>	<i>Percent</i>
On Feed Jun 1	10,815	10,407	96
Placed on Feed During Jun	1,518	1,391	92
Fed Cattle Marketed During Jun	1,978	1,989	101
Other Disappearance During Jun	60	57	95
On Feed Jul 1	10,295	9,752	95

**Cattle on Feed: Number on Feed, 1,000+ Capacity Feedlots,
by Month, State, and United States 2008-2009**

State	Aug 1, 2008	Jul 1, 2009	Aug 1, 2009		
			Number	as % of 2008	as % of Jul
	<i>1,000 Head</i>	<i>1,000 Head</i>	<i>1,000 Head</i>	<i>Percent</i>	<i>Percent</i>
AZ	357	287	275	77	96
CA	515	460	450	87	98
CO	750	910	850	113	93
ID	180	200	195	108	98
IA	475	520	510	107	98
KS	2,010	1,920	1,920	96	100
NE	1,920	1,920	1,920	100	100
NM	164	94	86	52	91
OK	290	295	310	107	105
SD	170	205	190	112	93
TX	2,590	2,490	2,510	97	101
WA	133	146	138	104	95
Oth Sts	315	305	290	92	95
US	9,869	9,752	9,644	98	99

**United States Cattle on Feed
1,000+ Capacity Feedlots**

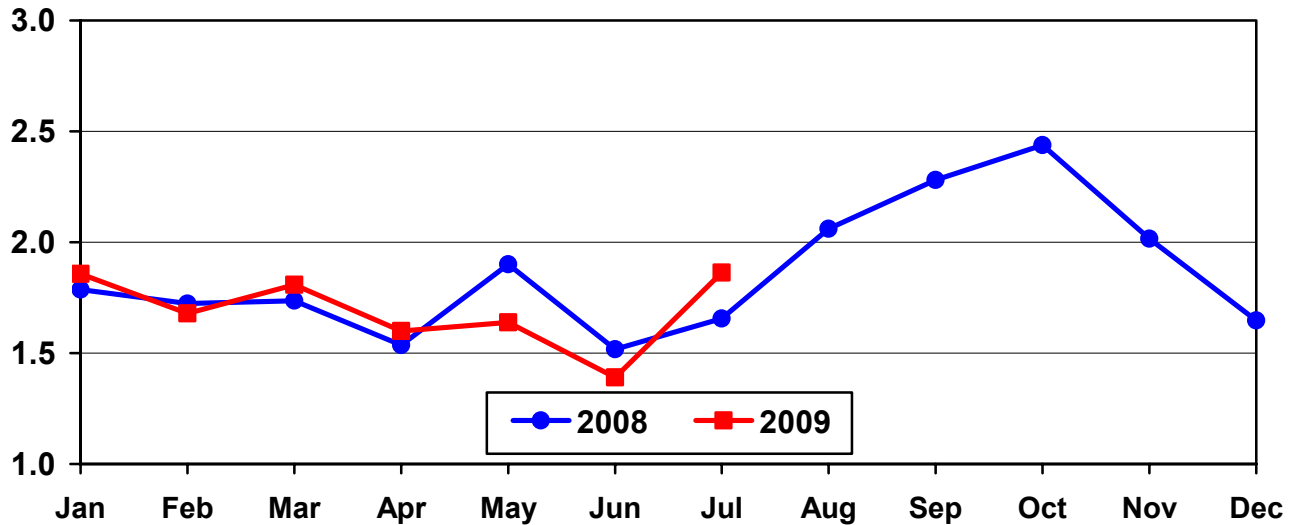


**Cattle on Feed: Number Placed on Feed, 1,000+ Capacity Feedlots,
by Month, State, and United States 2008-2009**

State	During Jul 2008	During Jun 2009	During Jul 2009		
			Number	as % of 2008	as % of Jun
	<i>1,000 Head</i>	<i>1,000 Head</i>	<i>1,000 Head</i>	<i>Percent</i>	<i>Percent</i>
AZ	37	21	25	68	119
CA	45	43	45	100	105
CO	110	125	125	114	100
ID	29	32	33	114	103
IA	51	59	61	120	103
KS	430	305	480	112	157
NE	320	270	410	128	152
NM	32	17	13	41	76
OK	46	44	69	150	157
SD	21	25	29	138	116
TX	460	380	495	108	130
WA	32	30	33	103	110
Oth Sts	43	40	45	105	113
US	1,656	1,391	1,863	113	134

**United States Cattle on Feed
1,000+ Capacity Feedlots Number Placed**

Million Head



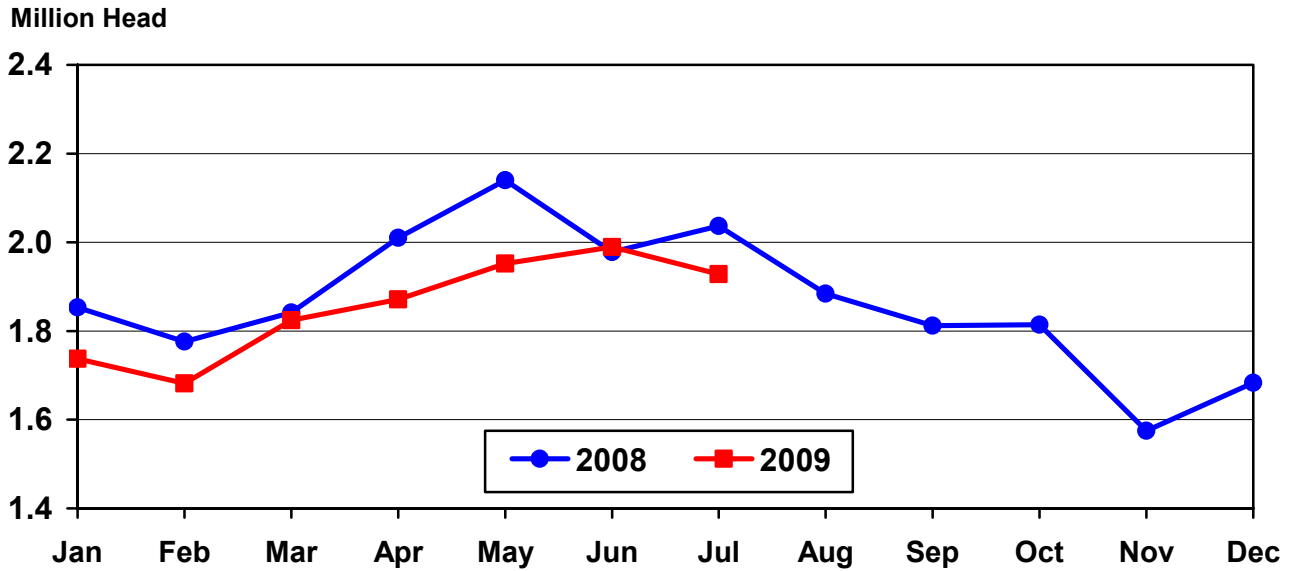
**Cattle on Feed: Number Placed on Feed by Weight Group, 1,000+ Capacity
Feedlots, by Month, State, and United States, 2008-2009**

State	During July									
	Under 600		600-699		700-799		800 Plus		Total	
	2008	2009	2008	2009	2008	2009	2008	2009	2008	2009
	<i>1,000 Head</i>	<i>1,000 Head</i>	<i>1,000 Head</i>	<i>1,000 Head</i>	<i>1,000 Head</i>	<i>1,000 Head</i>	<i>1,000 Head</i>	<i>1,000 Head</i>	<i>1,000 Head</i>	<i>1,000 Head</i>
CO	15	15	20	15	35	35	40	60	110	125
KS	70	80	85	90	155	150	120	160	430	480
NE	40	60	50	80	90	95	140	175	320	410
TX	130	200	110	125	130	105	90	65	460	495
Oth Sts	105	100	50	55	71	73	110	125	336	353
US	360	455	315	365	481	458	500	585	1,656	1,863
	During June									
	Under 600		600-699		700-799		800 Plus		Total	
	2008	2009	2008	2009	2008	2009	2008	2009	2008	2009
	<i>1,000 Head</i>	<i>1,000 Head</i>	<i>1,000 Head</i>	<i>1,000 Head</i>	<i>1,000 Head</i>	<i>1,000 Head</i>	<i>1,000 Head</i>	<i>1,000 Head</i>	<i>1,000 Head</i>	<i>1,000 Head</i>
CO	20	15	10	20	25	35	30	55	85	125
KS	60	55	75	70	100	95	95	85	330	305
NE	40	50	40	55	70	55	140	110	290	270
TX	135	110	140	95	120	125	65	50	460	380
Oth Sts	110	85	60	50	68	61	115	115	353	311
US	365	315	325	290	383	371	445	415	1,518	1,391

**Cattle on Feed: Number Marketed, 1,000+ Capacity Feedlots,
by Month, State, and United States 2008-2009**

State	During Jul 2008	During Jun 2009	During Jul 2009		
			Number	as % of 2008	as % of Jun
	<i>1,000 Head</i>	<i>1,000 Head</i>	<i>1,000 Head</i>	<i>Percent</i>	<i>Percent</i>
AZ	35	34	36	103	106
CA	48	51	53	110	104
CO	175	190	180	103	95
ID	48	36	37	77	103
IA	75	67	70	93	104
KS	490	455	470	96	103
NE	440	440	400	91	91
NM	21	27	18	86	67
OK	55	58	52	95	90
SD	35	39	43	123	110
TX	520	490	470	90	96
WA	38	39	40	105	103
Oth Sts	57	63	59	104	94
US	2,037	1,989	1,928	95	97

United States Cattle on Feed 1,000+ Capacity Feedlots Number Marketed



**Cattle on Feed: Other Disappearance, 1,000+ Capacity Feedlots,
by Month, State, and United States 2008-2009**

State	During Jul 2008	During Jun 2009	During Jul 2009		
			Number	as % of 2008	as % of Jun
	<i>1,000 Head</i>	<i>1,000 Head</i>	<i>1,000 Head</i>	<i>Percent</i>	<i>Percent</i>
AZ	1	1	1	100	100
CA	2	2	2	100	100
CO	5	5	5	100	100
ID	1	1	1	100	100
IA	1	2	1	100	50
KS	10	10	10	100	100
NE	10	20	10	100	50
NM	1	1	3	300	300
OK	1	1	2	200	200
SD	1	1	1	100	100
TX	10	10	5	50	50
WA	1	1	1	100	100
Oth Sts	1	2	1	100	50
US	45	57	43	96	75

Terms and Definitions of Cattle on Feed Estimates

Cattle on feed are animals being fed a ration of grain, silage, hay and/or protein supplement for slaughter market that are expected to produce a carcass that will grade select or better. It excludes cattle being "backgrounded only" for later sale as feeders or later placement in another feedlot.

Placements are cattle put into a feedlot, fed a ration which will produce a carcass that will grade select or better, and are intended for the slaughter market.

Marketings are cattle shipped out of feedlots to a slaughter market.

Other disappearance includes death loss, movement from feedlots to pasture, and shipments to other feedlots for further feeding.

Reliability of Cattle on Feed Estimates

Survey Procedures: During January and July all known feedlots in the U.S. with capacity of 1,000 or more head are surveyed to provide data for cattle on feed estimates. During the other months, all known feedlots from 16 States are surveyed. The 16 States account for 98 percent of the cattle on feed in feedlots with capacity of 1,000 or more head.

Estimating Procedures: These cattle on feed estimates were prepared by the Agricultural Statistics Board after reviewing recommendations and analysis submitted by each State office. Regional and State survey data were reviewed for reasonableness with each other and with estimates from the previous month when setting the current estimates.

Revision Policy: Revisions to previous estimates are made to improve month to month relationships. Estimates for the previous month are subject to revision in all States each month when current estimates are made. In February, all monthly estimates for the previous year, and the number of feedlots and annual marketings from two years ago are reviewed and subject to revisions. The reviews are primarily based on slaughter data, state check-off or brand data, and any other data that may have been received after the original estimate was made. Estimates will also be reviewed after data from the Census of Agriculture are available. No revisions will be made after that date and estimates become final.

Reliability: Since all 1,000+ capacity cattle on feed operators in every State are not included in the monthly survey, survey estimates are subject to sampling variability. Survey results are also subject to non-sampling errors such as omissions, duplications, and mistakes in reporting, recording, and processing the data. The effects of these errors cannot be measured directly. They are minimized through rigid quality controls in the data collection process and through a careful review of all reported data for consistency and reasonableness.

To assist users in evaluating the reliability of estimates in this report, the "**Root Mean Square Error**" is shown for selected items in the following table. The "Root Mean Square Error" is a statistical measure based on past performance and is computed using the differences between first and latest estimates. The "Root Mean Square Error" for cattle on feed inventory estimates over the past 24 months is less than 0.1 percent (0.04). This means that chances are 2 out of 3 that the final estimate will not be above or below the current estimate of 9.6 million head by more than 0.04 percent. Chances are 9 out of 10 that the difference will not exceed 0.1 percent.

The following table also shows a 24 month record of the range of differences between first and latest estimates for selected items. Using estimates of number on feed as an example, changes between the first estimate and the latest estimate during the past 24 months have averaged 2,000 head, ranging from 0 to 18,000 head. During this period the initial estimate has been above the final estimate 1 time and has been below the final estimate 5 times. This does not imply that the initial estimate is likely to understate or overstate final inventory.

Reliability of Monthly Cattle on Feed Estimates ¹

Item	Root Mean Square Error	90% Confidence Level		Difference Between First and Final Estimates			Number of Months	
		Percent	(000) Head	Average	Smallest	Largest	First Above Final	First Below Final
	<i>Percent</i>	<i>Percent</i>	<i>1,000 Head</i>	<i>1,000 Head</i>	<i>1,000 Head</i>	<i>1,000 Head</i>	<i>Number</i>	<i>Number</i>
Number on Feed	0.0	0.1	9.6	2	0	18	1	5
Placements	0.2	0.3	5.6	2	0	10	2	6
Marketings	0.2	0.3	5.8	1	0	10	4	2

¹ Based on data for the past 24 months.

Information Contacts

Listed below are the commodity specialists in the Livestock Branch of the National Agricultural Statistics Service to contact for additional information.

Dan Kerestes, Chief, Livestock Branch (202) 720-3570

Livestock Section

Scott Hollis, Head, Livestock Section (202) 690-2424
 Jim Collom - Dairy Products (202) 690-3236
 Joe Gaynor - Dairy Products Prices (202) 690-2168
 Jason Hardegree - Cattle, Cattle on Feed (202) 720-3040
 Sherry Bertramsen - Livestock Slaughter (515) 284-4340
 Everett Olbert - Sheep and Goats (202) 720-4751
 Mike Miller - Milk Production and Milk Cows (202) 720-3278
 Nick Streff - Hogs and Pigs (202) 720-3106

ACCESS TO REPORTS!!

For your convenience, there are several ways to obtain NASS reports, data products, and services:

INTERNET ACCESS

All NASS reports are available free of charge. For free access, connect to the Internet and go to the NASS Home Page at: **www.nass.usda.gov**.

E-MAIL SUBSCRIPTION

All NASS reports are available by subscription free of charge direct to your e-mail address. Starting with the NASS Home Page at **www.nass.usda.gov**, under the right navigation, *Receive reports by Email*, click on **National** or **State**. Follow the instructions on the screen.

PRINTED REPORTS OR DATA PRODUCTS

CALL OUR TOLL-FREE ORDER DESK: 800-999-6779 (U.S. and Canada)
Other areas, please call 703-605-6220 FAX: 703-605-6900
(Visa, MasterCard, check, or money order acceptable for payment.)

ASSISTANCE

For **assistance** with general agricultural statistics or further information about NASS or its products or services, contact the **Agricultural Statistics Hotline** at **800-727-9540**, 7:30 a.m. to 4:00 p.m. ET, or e-mail: **nass@nass.usda.gov**.

The U.S. Department of Agriculture (USDA) prohibits discrimination in all its programs and activities on the basis of race, color, national origin, age, disability, and where applicable, sex, marital status, familial status, parental status, religion, sexual orientation, genetic information, political beliefs, reprisal, or because all or a part of an individual's income is derived from any public assistance program. (Not all prohibited bases apply to all programs.) Persons with disabilities who require alternative means for communication of program information (Braille, large print, audiotape, etc.) should contact USDA's TARGET Center at (202) 720-2600 (voice and TDD).

To file a complaint of discrimination, write to USDA, Director, Office of Civil Rights, 1400 Independence Avenue, S.W., Washington, D.C. 20250-9410, or call (800) 795-3272 (voice) or (202) 720-6382 (TDD). USDA is an equal opportunity provider and employer.