



Cattle on Feed

Released September 18, 2009, by the National Agricultural Statistics Service (NASS), Agricultural Statistics Board, U.S. Department of Agriculture. For information on *Cattle on Feed* call Jason Hardegree at (202) 720-3040, office hours 7:30 a.m. to 4:00 p.m. ET.

U.S. Cattle on Feed Down 1 Percent

Cattle and calves on feed for slaughter market in the United States for feedlots with capacity of 1,000 or more head totaled 9.88 million head on September 1, 2009. The inventory was 1 percent below September 1, 2008.

Placements in feedlots during August totaled 2.11 million, 2 percent above 2008. Net placements were 2.06 million head. During August, placements of cattle and calves weighing less than 600 pounds were 425,000, 600-699 pounds were 395,000, 700-799 pounds were 515,000, and 800 pounds and greater were 775,000.

Marketings of fed cattle during August totaled 1.81 million, 4 percent below 2008. This is the lowest fed cattle marketings for the month of August since the series began in 1996.

Other disappearance totaled 55,000 during August, 12 percent above 2008.

**Cattle on Feed: Number on Feed, Placements, Marketings, and
Other Disappearance, 1,000+ Capacity Feedlots,
United States, September 1, 2008-2009**

Item	Number		2009 as %
	2008	2009	of 2008
	<i>1,000 Head</i>	<i>1,000 Head</i>	<i>Percent</i>
On Feed Aug 1	9,869	*9,637	98
Placed on Feed During Aug	2,061	2,110	102
Fed Cattle Marketed During Aug	1,884	1,810	96
Other Disappearance During Aug	49	55	112
On Feed Sep 1	9,997	9,882	99

* Revised.

**Cattle on Feed: Number on Feed, Placements, Marketings, and
Other Disappearance, 1,000+ Capacity Feedlots,
United States, August 1, 2008-2009**

Item	Number		2009 as %
	2008	2009	of 2008
	<i>1,000 Head</i>	<i>1,000 Head</i>	<i>Percent</i>
On Feed Jul 1	10,295	9,752	95
Placed on Feed During Jul	1,656	1,863	113
Fed Cattle Marketed During Jul	2,037	*1,935	95
Other Disappearance During Jul	45	43	96
On Feed Aug 1	9,869	*9,637	98

* Revised.

**Cattle on Feed: Number on Feed, 1,000+ Capacity Feedlots,
by Month, State, and United States 2008-2009**

State	Sep 1, 2008	Aug 1, 2009	Sep 1, 2009		
			Number	as % of 2008	as % of Aug
	<i>1,000 Head</i>	<i>1,000 Head</i>	<i>1,000 Head</i>	<i>Percent</i>	<i>Percent</i>
AZ	362	275	275	76	100
CA	505	450	455	90	101
CO	770	850	860	112	101
ID	180	195	195	108	100
IA	470	510	510	109	100
KS	2,090	1,920	2,050	98	107
NE	1,960	1,920	2,020	103	105
NM	167	(D)	(D)	(D)	(D)
OK	305	310	325	107	105
SD	165	190	185	112	97
TX	2,580	2,510	2,510	97	100
WA	138	138	140	101	101
Oth Sts ¹	305	369	357	(X)	97
US	9,997	*9,637	9,882	99	103

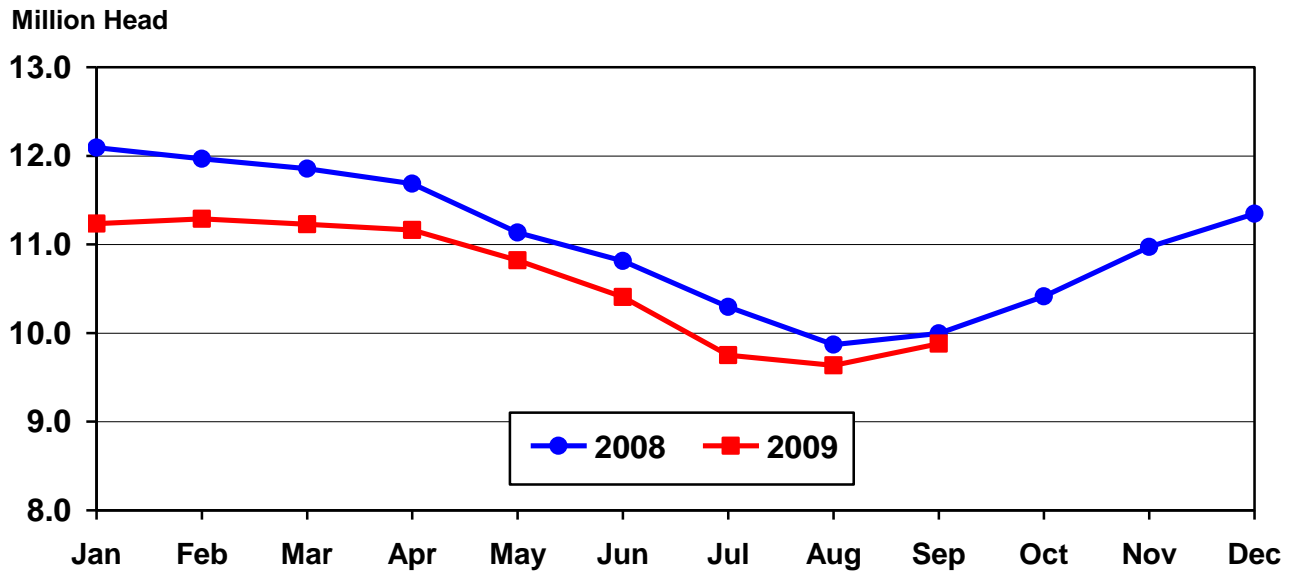
* Revised.

(D) Withheld to avoid disclosing data for individual operations.

(X) Comparison to 2008 is not applicable.

¹ Includes unpublished New Mexico totals for 2009.

**United States Cattle on Feed
1,000+ Capacity Feedlots**



**Cattle on Feed: Number Placed on Feed, 1,000+ Capacity Feedlots,
by Month, State, and United States 2008-2009**

State	During Aug 2008	During Jul 2009	During Aug 2009		
			Number	as % of 2008	as % of Jul
	<i>1,000 Head</i>	<i>1,000 Head</i>	<i>1,000 Head</i>	<i>Percent</i>	<i>Percent</i>
AZ	33	25	28	85	112
CA	37	45	53	143	118
CO	190	125	205	108	164
ID	45	33	42	93	127
IA	72	61	74	103	121
KS	520	480	550	106	115
NE	445	410	460	103	112
NM	27	(D)	(D)	(D)	(D)
OK	70	69	73	104	106
SD	28	29	36	129	124
TX	510	495	500	98	101
WA	36	33	31	86	94
Oth Sts ¹	48	58	58	(X)	100
US	2,061	1,863	2,110	102	113

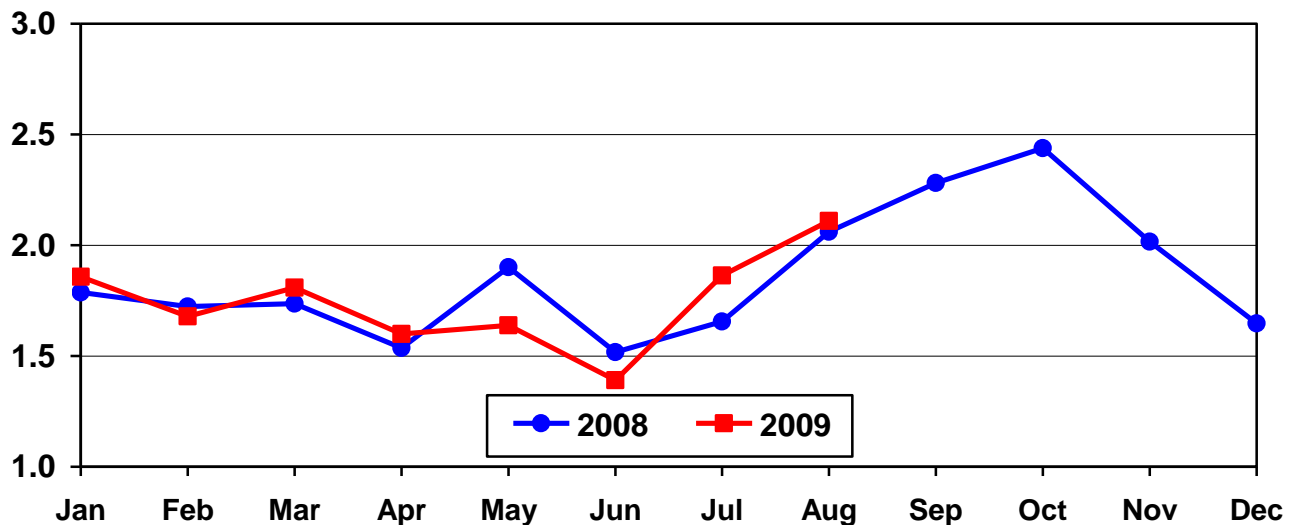
(D) Withheld to avoid disclosing data for individual operations.

(X) Comparison to 2008 is not applicable.

¹ Includes unpublished New Mexico totals for 2009.

**United States Cattle on Feed
1,000+ Capacity Feedlots Number Placed**

Million Head



**Cattle on Feed: Number Placed on Feed by Weight Group, 1,000+ Capacity
Feedlots, by Month, State, and United States, 2008-2009**

State	During August									
	Under 600		600-699		700-799		800 Plus		Total	
	2008	2009	2008	2009	2008	2009	2008	2009	2008	2009
	<i>1,000 Head</i>	<i>1,000 Head</i>	<i>1,000 Head</i>	<i>1,000 Head</i>	<i>1,000 Head</i>	<i>1,000 Head</i>	<i>1,000 Head</i>	<i>1,000 Head</i>	<i>1,000 Head</i>	<i>1,000 Head</i>
CO	15	15	20	20	50	50	105	120	190	205
KS	65	60	105	100	190	175	160	215	520	550
NE	60	60	60	80	105	100	220	220	445	460
TX	125	190	170	140	140	110	75	60	510	500
Oth Sts	100	100	55	55	81	80	160	160	396	395
US	365	425	410	395	566	515	720	775	2,061	2,110
	During July									
	Under 600		600-699		700-799		800 Plus		Total	
	2008	2009	2008	2009	2008	2009	2008	2009	2008	2009
	<i>1,000 Head</i>	<i>1,000 Head</i>	<i>1,000 Head</i>	<i>1,000 Head</i>	<i>1,000 Head</i>	<i>1,000 Head</i>	<i>1,000 Head</i>	<i>1,000 Head</i>	<i>1,000 Head</i>	<i>1,000 Head</i>
CO	15	15	20	15	35	35	40	60	110	125
KS	70	80	85	90	155	150	120	160	430	480
NE	40	60	50	80	90	95	140	175	320	410
TX	130	200	110	125	130	105	90	65	460	495
Oth Sts	105	100	50	55	71	73	110	125	336	353
US	360	455	315	365	481	458	500	585	1,656	1,863

**Cattle on Feed: Number Marketed, 1,000+ Capacity Feedlots,
by Month, State, and United States 2008-2009**

State	During Aug 2008	During Jul 2009	During Aug 2009		
			Number	as % of 2008	as % of Jul
	<i>1,000 Head</i>	<i>1,000 Head</i>	<i>1,000 Head</i>	<i>Percent</i>	<i>Percent</i>
AZ	27	36	27	100	75
CA	45	53	46	102	87
CO	165	180	190	115	106
ID	44	37	40	91	108
IA	75	70	73	97	104
KS	430	470	405	94	86
NE	395	400	350	89	88
NM	23	(D)	(D)	(D)	(D)
OK	54	52	56	104	108
SD	32	43	40	125	93
TX	510	470	490	96	104
WA	30	40	28	93	70
Oth Sts ¹	54	84	65	(X)	77
US	1,884	*1,935	1,810	96	94

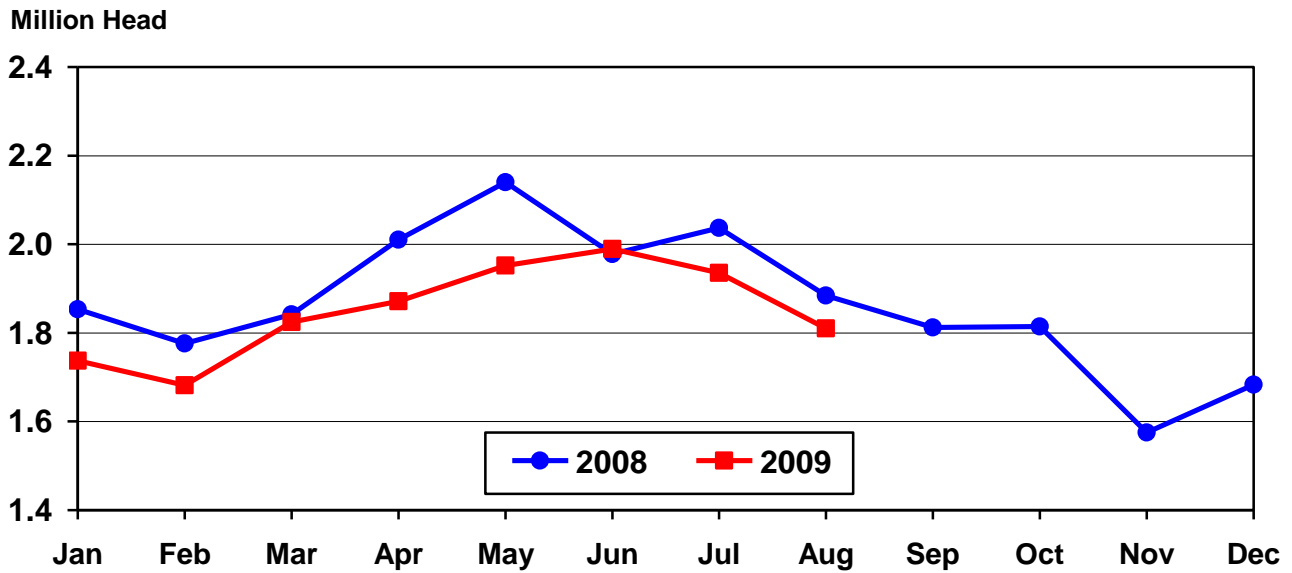
* Revised.

(D) Withheld to avoid disclosing data for individual operations.

(X) Comparison to 2008 is not applicable.

¹ Includes unpublished New Mexico totals for 2009.

United States Cattle on Feed 1,000+ Capacity Feedlots Number Marketed



**Cattle on Feed: Other Disappearance, 1,000+ Capacity Feedlots,
by Month, State, and United States 2008-2009**

State	During Aug 2008 <i>1,000 Head</i>	During Jul 2009 <i>1,000 Head</i>	During Aug 2009		
			Number <i>1,000 Head</i>	as % of 2008 <i>Percent</i>	as % of Jul <i>Percent</i>
AZ	1	1	1	100	100
CA	2	2	2	100	100
CO	5	5	5	100	100
ID	1	1	2	200	200
IA	2	1	1	50	100
KS	10	10	15	150	150
NE	10	10	10	100	100
NM	1	(D)	(D)	(D)	(D)
OK	1	2	2	200	100
SD	1	1	1	100	100
TX	10	5	10	100	200
WA	1	1	1	100	100
Oth Sts ¹	4	4	5	(X)	125
US	49	43	55	112	128

(D) Withheld to avoid disclosing data for individual operations.

(X) Comparison to 2008 is not applicable.

¹ Includes unpublished New Mexico totals for 2009.

Terms and Definitions of Cattle on Feed Estimates

Cattle on feed are animals being fed a ration of grain, silage, hay and/or protein supplement for slaughter market that are expected to produce a carcass that will grade select or better. It excludes cattle being "backgrounded only" for later sale as feeders or later placement in another feedlot.

Placements are cattle put into a feedlot, fed a ration which will produce a carcass that will grade select or better, and are intended for the slaughter market.

Marketings are cattle shipped out of feedlots to a slaughter market.

Other disappearance includes death loss, movement from feedlots to pasture, and shipments to other feedlots for further feeding.

Reliability of Cattle on Feed Estimates

Survey Procedures: During January and July all known feedlots in the U.S. with capacity of 1,000 or more head are surveyed to provide data for cattle on feed estimates. During the other months, all known feedlots from 16 States are surveyed. The 16 States account for 98 percent of the cattle on feed in feedlots with capacity of 1,000 or more head.

Estimating Procedures: These cattle on feed estimates were prepared by the Agricultural Statistics Board after reviewing recommendations and analysis submitted by each State office. Regional and State survey data were reviewed for reasonableness with each other and with estimates from the previous month when setting the current estimates.

Revision Policy: Revisions to previous estimates are made to improve month to month relationships. Estimates for the previous month are subject to revision in all States each month when current estimates are made. In February, all monthly estimates for the previous year, and the number of feedlots and annual marketings from two years ago are reviewed and subject to revisions. The reviews are primarily based on slaughter data, state check-off or brand data, and any other data that may have been received after the original estimate was made. Estimates will also be reviewed after data from the Census of Agriculture are available. No revisions will be made after that date and estimates become final.

Reliability: Since all 1,000+ capacity cattle on feed operators in every State are not included in the monthly survey, survey estimates are subject to sampling variability. Survey results are also subject to non-sampling errors such as omissions, duplications, and mistakes in reporting, recording, and processing the data. The effects of these errors cannot be measured directly. They are minimized through rigid quality controls in the data collection process and through a careful review of all reported data for consistency and reasonableness.

To assist users in evaluating the reliability of estimates in this report, the "**Root Mean Square Error**" is shown for selected items in the following table. The "Root Mean Square Error" is a statistical measure based on past performance and is computed using the differences between first and latest estimates. The "Root Mean Square Error" for cattle on feed inventory estimates over the past 24 months is less than 0.1 percent (0.04). This means that chances are 2 out of 3 that the final estimate will not be above or below the current estimate of 9.9 million head by more than 0.04 percent. Chances are 9 out of 10 that the difference will not exceed 0.1 percent.

The following table also shows a 24 month record of the range of differences between first and latest estimates for selected items. Using estimates of number on feed as an example, changes between the first estimate and the latest estimate during the past 24 months have averaged 2,000 head, ranging from 0 to 18,000 head. During this period the initial estimate has been above the final estimate 2 times and has been below the final estimate 5 times. This does not imply that the initial estimate is likely to understate or overstate final inventory.

Reliability of Monthly Cattle on Feed Estimates ¹

Item	Root Mean Square Error	90% Confidence Level		Difference Between First and Final Estimates			Number of Months	
		Percent	(000) Head	Average	Smallest	Largest	First Above Final	First Below Final
	<i>Percent</i>	<i>Percent</i>	<i>1,000 Head</i>	<i>1,000 Head</i>	<i>1,000 Head</i>	<i>1,000 Head</i>	<i>Number</i>	<i>Number</i>
Number on Feed	0.0	0.1	9.9	2	0	18	2	5
Placements	0.2	0.3	6.3	2	0	10	2	6
Marketings	0.2	0.3	5.4	2	0	10	4	3

¹ Based on data for the past 24 months.

Information Contacts

Listed below are the commodity specialists in the Livestock Branch of the National Agricultural Statistics Service to contact for additional information.

Dan Kerestes, Chief, Livestock Branch (202) 720-3570

Livestock Section

Scott Hollis, Head, Livestock Section (202) 690-2424

Jim Collom - Dairy Products (202) 690-3236

Joe Gaynor - Dairy Products Prices (202) 690-2168

Jason Hardegree - Cattle, Cattle on Feed (202) 720-3040

Sherry Bertramsen - Livestock Slaughter (515) 284-4340

Everett Olbert - Sheep and Goats (202) 720-4751

Mike Miller - Milk Production and Milk Cows (202) 720-3278

Nick Streff - Hogs and Pigs (202) 720-3106

ACCESS TO REPORTS!!

For your convenience, there are several ways to obtain NASS reports, data products, and services:

INTERNET ACCESS

All NASS reports are available free of charge. For free access, connect to the Internet and go to the NASS Home Page at: **www.nass.usda.gov**.

E-MAIL SUBSCRIPTION

All NASS reports are available by subscription free of charge direct to your e-mail address. Starting with the NASS Home Page at **www.nass.usda.gov**, under the right navigation, *Receive reports by Email*, click on **National** or **State**. Follow the instructions on the screen.

PRINTED REPORTS OR DATA PRODUCTS

CALL OUR TOLL-FREE ORDER DESK: 800-999-6779 (U.S. and Canada)
Other areas, please call 703-605-6220 FAX: 703-605-6900
(Visa, MasterCard, check, or money order acceptable for payment.)

ASSISTANCE

For **assistance** with general agricultural statistics or further information about NASS or its products or services, contact the **Agricultural Statistics Hotline** at **800-727-9540**, 7:30 a.m. to 4:00 p.m. ET, or e-mail: **nass@nass.usda.gov**.

The U.S. Department of Agriculture (USDA) prohibits discrimination in all its programs and activities on the basis of race, color, national origin, age, disability, and where applicable, sex, marital status, familial status, parental status, religion, sexual orientation, genetic information, political beliefs, reprisal, or because all or a part of an individual's income is derived from any public assistance program. (Not all prohibited bases apply to all programs.) Persons with disabilities who require alternative means for communication of program information (Braille, large print, audiotape, etc.) should contact USDA's TARGET Center at (202) 720-2600 (voice and TDD).

To file a complaint of discrimination, write to USDA, Director, Office of Civil Rights, 1400 Independence Avenue, S.W., Washington, D.C. 20250-9410, or call (800) 795-3272 (voice) or (202) 720-6382 (TDD). USDA is an equal opportunity provider and employer.

**USDA Data Users' Meeting
Monday, November 2, 2009**

**Crowne Plaza Hotel Chicago-Metro
Chicago, Illinois 60661
(312) 829-5000**

The USDA's National Agricultural Statistics Service will be organizing an open forum for data users. The purpose will be to provide updates on pending changes in the various statistical and information programs and seeks comments and input from data users. Other USDA agencies to be represented will include the Agricultural Marketing Service, the Economic Research Service, the Foreign Agricultural Service, and World Agricultural Outlook Board. The Foreign Trade Division from the Census Bureau will also be included in the meeting.

For registration details or additional information for the Data Users' Meeting, see the NASS homepage at www.nass.usda.gov/forum/ or contact Marjorie Taylor (NASS) at (202) 690-8141 or at marjorie_taylor@nass.usda.gov.

This Data Users' Meeting precedes an Industry Outlook Conference that will be held at the same location on Tuesday, November 3, 2009. The Outlook Conference brings together analysts from various commodity sectors to discuss the outlook situation. For registration details or additional information for the Industry Outlook Meeting see the Livestock and Marketing Information Center (LMIC) homepage at www.lmic.info or contact Jim Robb at (720) 544-2941 or at robb@lmic.info.