



Cattle on Feed

Released November 20, 2009, by the National Agricultural Statistics Service (NASS), Agricultural Statistics Board, U.S. Department of Agriculture. For information on *Cattle on Feed* call Jason Hardegree at (202) 720-3040, office hours 7:30 a.m. to 4:00 p.m. ET.

U.S. Cattle on Feed Up 1 Percent

Cattle and calves on feed for slaughter market in the United States for feedlots with capacity of 1,000 or more head totaled 11.1 million head on November 1, 2009. The inventory was 1 percent above November 1, 2008.

Placements in feedlots during October totaled 2.47 million, 1 percent above 2008. Net placements were 2.42 million head. During October, placements of cattle and calves weighing less than 600 pounds were 615,000, 600-699 pounds were 645,000, 700-799 pounds were 579,000, and 800 pounds and greater were 635,000.

Marketings of fed cattle during October totaled 1.76 million, 3 percent below 2008.

Other disappearance totaled 59,000 during October, 12 percent below 2008.

**Cattle on Feed: Number on Feed, Placements, Marketings, and
Other Disappearance, 1,000+ Capacity Feedlots,
United States, November 1, 2008-2009**

Item	Number		Percent of Previous Year
	2008	2009	
	<i>1,000 Head</i>	<i>1,000 Head</i>	<i>Percent</i>
On Feed Oct 1	10,415	10,474	101
Placed on Feed During Oct	2,438	2,474	101
Fed Cattle Marketed During Oct	1,814	1,755	97
Other Disappearance During Oct	67	59	88
On Feed Nov 1	10,972	11,134	101

**Cattle on Feed: Number on Feed, Placements, Marketings, and
Other Disappearance, 1,000+ Capacity Feedlots,
United States, October 1, 2008-2009**

Item	Number		Percent of Previous Year
	2008	2009	
	<i>1,000 Head</i>	<i>1,000 Head</i>	<i>Percent</i>
On Feed Sep 1	9,997	9,879	99
Placed on Feed During Sep	2,281	2,388	105
Fed Cattle Marketed During Sep	1,812	1,746	96
Other Disappearance During Sep	51	47	92
On Feed Oct 1	10,415	10,474	101

**Cattle on Feed: Number on Feed, 1,000+ Capacity Feedlots,
by Month, State, and United States 2008-2009**

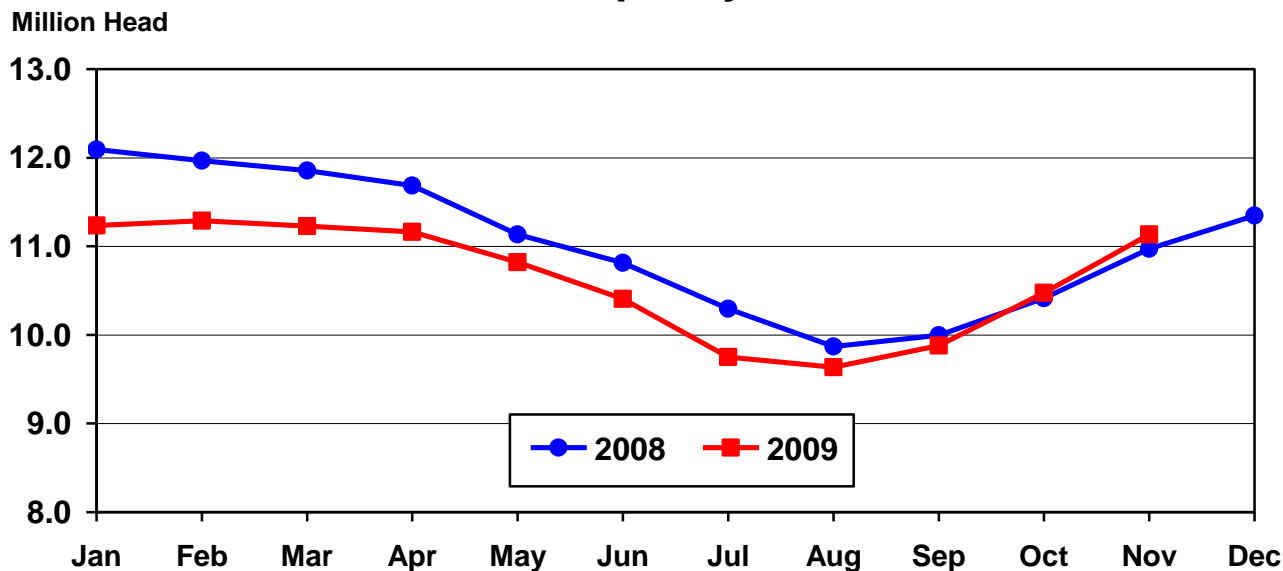
State	Nov 1, 2008	Oct 1, 2009	Nov 1, 2009		
			Number	Percent of Previous Year	Percent of Previous Month
	<i>1,000 Head</i>	<i>1,000 Head</i>	<i>1,000 Head</i>	<i>Percent</i>	<i>Percent</i>
AZ	362	275	279	77	101
CA	500	465	470	94	101
CO	960	960	1,040	108	108
ID	210	205	210	100	102
IA	485	520	540	111	104
KS	2,230	2,220	2,330	104	105
NE	2,310	2,170	2,400	104	111
NM	172	(D)	(D)	(D)	(D)
OK	320	355	375	117	106
SD	200	195	205	103	105
TX	2,710	2,600	2,730	101	105
WA	163	147	155	95	105
Oth Sts ¹	350	362	400	(X)	110
US	10,972	10,474	11,134	101	106

(D) Withheld to avoid disclosing data for individual operations.

(X) Comparison to 2008 is not applicable.

¹ Includes unpublished New Mexico totals for 2009.

United States Cattle on Feed 1,000+ Capacity Feedlots



**Cattle on Feed: Number Placed on Feed, 1,000+ Capacity Feedlots,
by Month, State, and United States 2008-2009**

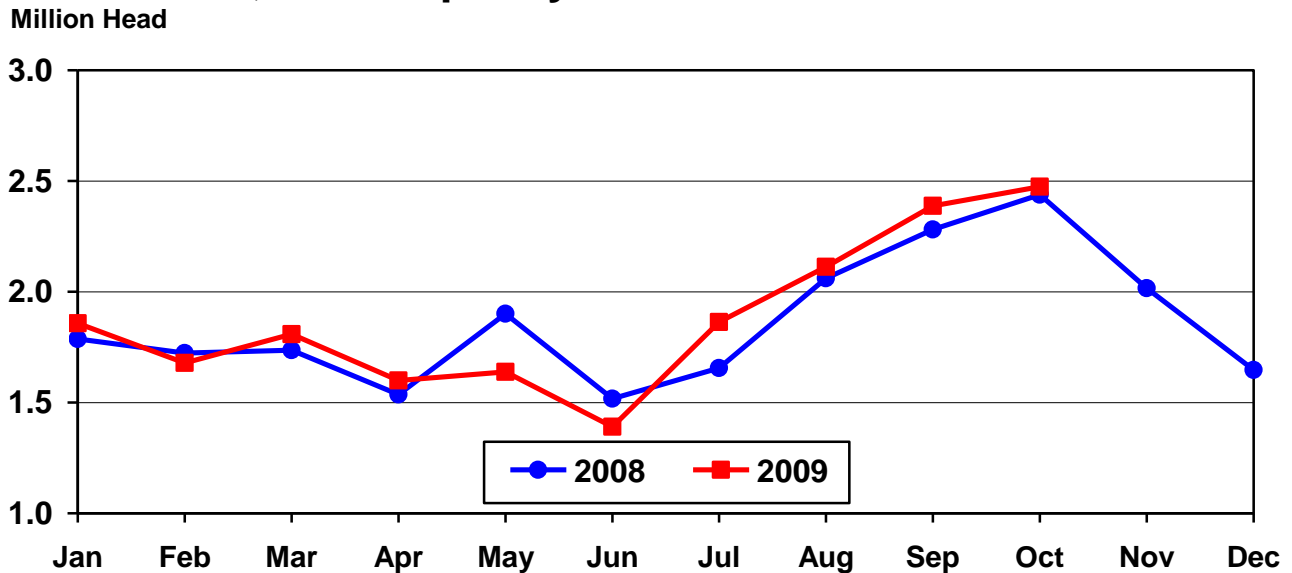
State	During Oct 2008	During Sep 2009	During Oct 2009		
			Number	Percent of Previous Year	Percent of Previous Month
	<i>1,000 Head</i>	<i>1,000 Head</i>	<i>1,000 Head</i>	<i>Percent</i>	<i>Percent</i>
AZ	31	27	29	94	107
CA	54	56	57	106	102
CO	245	260	245	100	94
ID	55	53	50	91	94
IA	104	105	123	118	117
KS	450	510	465	103	91
NE	590	550	620	105	113
NM	17	(D)	(D)	(D)	(D)
OK	75	80	83	111	104
SD	70	52	65	93	125
TX	630	570	610	97	107
WA	38	35	38	100	109
Oth Sts ¹	79	90	89	(X)	99
US	2,438	2,388	2,474	101	104

(D) Withheld to avoid disclosing data for individual operations.

(X) Comparison to 2008 is not applicable.

¹ Includes unpublished New Mexico totals for 2009.

**United States Cattle on Feed
1,000+ Capacity Feedlots Number Placed**



**Cattle on Feed: Number Placed on Feed by Weight Group, 1,000+ Capacity
Feedlots, by Month, State, and United States, 2008-2009**

State	During October										
	Under 600		600-699		700-799		800 Plus		Total		
	2008	2009	2008	2009	2008	2009	2008	2009	2008	2009	
	<i>1,000 Head</i>	<i>1,000 Head</i>	<i>1,000 Head</i>	<i>1,000 Head</i>	<i>1,000 Head</i>	<i>1,000 Head</i>	<i>1,000 Head</i>	<i>1,000 Head</i>	<i>1,000 Head</i>	<i>1,000 Head</i>	<i>1,000 Head</i>
CO	50	50	70	45	45	60	80	90	245	245	
KS	100	85	120	120	125	150	105	110	450	465	
NE	160	160	160	175	100	95	170	190	590	620	
TX	195	150	160	180	190	180	85	100	630	610	
Oth Sts	195	170	105	125	83	94	140	145	523	534	
US	700	615	615	645	543	579	580	635	2,438	2,474	
	During September										
	Under 600		600-699		700-799		800 Plus		Total		
	2008	2009	2008	2009	2008	2009	2008	2009	2008	2009	
	<i>1,000 Head</i>	<i>1,000 Head</i>	<i>1,000 Head</i>	<i>1,000 Head</i>	<i>1,000 Head</i>	<i>1,000 Head</i>	<i>1,000 Head</i>	<i>1,000 Head</i>	<i>1,000 Head</i>	<i>1,000 Head</i>	<i>1,000 Head</i>
CO	20	20	30	25	45	65	160	150	255	260	
KS	80	85	100	115	155	155	150	155	485	510	
NE	80	65	70	90	120	120	280	275	550	550	
TX	145	175	150	160	130	160	85	75	510	570	
Oth Sts	120	145	65	60	91	93	205	200	481	498	
US	445	490	415	450	541	593	880	855	2,281	2,388	

**Cattle on Feed: Number Marketed, 1,000+ Capacity Feedlots,
by Month, State, and United States 2008-2009**

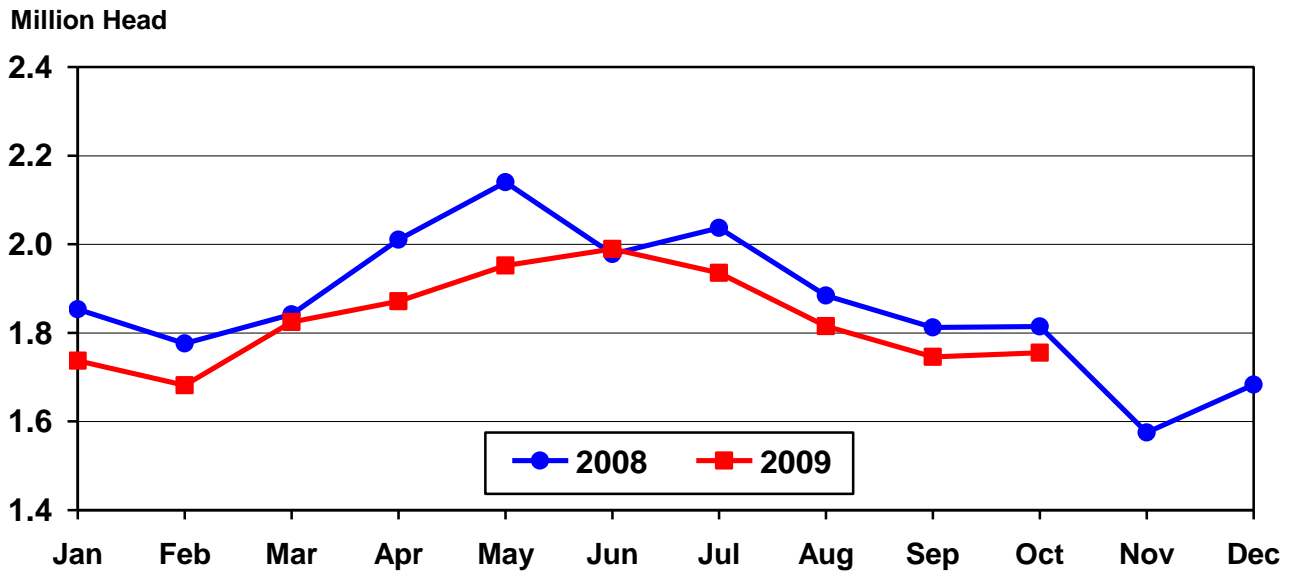
State	During Oct 2008	During Sep 2009	During Oct 2009		
			Number	Percent of Previous Year	Percent of Previous Month
	<i>1,000 Head</i>	<i>1,000 Head</i>	<i>1,000 Head</i>	<i>Percent</i>	<i>Percent</i>
AZ	28	26	24	86	92
CA	57	44	50	88	114
CO	150	155	160	107	103
ID	39	42	44	113	105
IA	93	94	100	108	106
KS	360	330	340	94	103
NE	375	395	380	101	96
NM	17	(D)	(D)	(D)	(D)
OK	68	48	60	88	125
SD	43	41	54	126	132
TX	495	485	465	94	96
WA	31	27	29	94	107
Oth Sts ¹	58	59	49	(X)	83
US	1,814	1,746	1,755	97	101

(D) Withheld to avoid disclosing data for individual operations.

(X) Comparison to 2008 is not applicable.

¹ Includes unpublished New Mexico totals for 2009.

United States Cattle on Feed 1,000+ Capacity Feedlots Number Marketed



**Cattle on Feed: Other Disappearance, 1,000+ Capacity Feedlots,
by Month, State, and United States 2008-2009**

State	During Oct 2008	During Sep 2009	During Oct 2009		
			Number	Percent of Previous Year	Percent of Previous Month
	<i>1,000 Head</i>	<i>1,000 Head</i>	<i>1,000 Head</i>	<i>Percent</i>	<i>Percent</i>
AZ	1	1	1	100	100
CA	2	2	2	100	100
CO	5	5	5	100	100
ID	1	1	1	100	100
IA	1	1	3	300	300
KS	20	10	15	75	150
NE	15	5	10	67	200
NM	1	(D)	(D)	(D)	(D)
OK	2	2	3	150	150
SD	2	1	1	50	100
TX	15	15	15	100	100
WA	1	1	1	100	100
Oth Sts ¹	1	3	2	(X)	67
US	67	47	59	88	126

(D) Withheld to avoid disclosing data for individual operations.

(X) Comparison to 2008 is not applicable.

¹ Includes unpublished New Mexico totals for 2009.

Terms and Definitions of Cattle on Feed Estimates

Cattle on feed are animals being fed a ration of grain, silage, hay and/or protein supplement for slaughter market that are expected to produce a carcass that will grade select or better. It excludes cattle being "backgrounded only" for later sale as feeders or later placement in another feedlot.

Placements are cattle put into a feedlot, fed a ration which will produce a carcass that will grade select or better, and are intended for the slaughter market.

Marketings are cattle shipped out of feedlots to a slaughter market.

Other disappearance includes death loss, movement from feedlots to pasture, and shipments to other feedlots for further feeding.

Reliability of Cattle on Feed Estimates

Survey Procedures: During January and July all known feedlots in the U.S. with capacity of 1,000 or more head are surveyed to provide data for cattle on feed estimates. During the other months, all known feedlots from 16 States are surveyed. The 16 States account for 98 percent of the cattle on feed in feedlots with capacity of 1,000 or more head.

Estimating Procedures: These cattle on feed estimates were prepared by the Agricultural Statistics Board after reviewing recommendations and analysis submitted by each State office. Regional and State survey data were reviewed for reasonableness with each other and with estimates from the previous month when setting the current estimates.

Revision Policy: Revisions to previous estimates are made to improve month to month relationships. Estimates for the previous month are subject to revision in all States each month when current estimates are made. In February, all monthly estimates for the previous year, and the number of feedlots and annual marketings from two years ago are reviewed and subject to revisions. The reviews are primarily based on slaughter data, state check-off or brand data, and any other data that may have been received after the original estimate was made. Estimates will also be reviewed after data from the Census of Agriculture are available. No revisions will be made after that date and estimates become final.

Reliability: Since all 1,000+ capacity cattle on feed operators in every State are not included in the monthly survey, survey estimates are subject to sampling variability. Survey results are also subject to non-sampling errors such as omissions, duplications, and mistakes in reporting, recording, and processing the data. The effects of these errors cannot be measured directly. They are minimized through rigid quality controls in the data collection process and through a careful review of all reported data for consistency and reasonableness.

To assist users in evaluating the reliability of estimates in this report, the "**Root Mean Square Error**" is shown for selected items in the following table. The "Root Mean Square Error" is a statistical measure based on past performance and is computed using the differences between first and latest estimates. The "Root Mean Square Error" for cattle on feed inventory estimates over the past 24 months is less than 0.1 percent (0.04). This means that chances are 2 out of 3 that the final estimate will not be above or below the current estimate of 11.1 million head by more than 0.04 percent. Chances are 9 out of 10 that the difference will not exceed 0.1 percent.

The following table also shows a 24 month record of the range of differences between first and latest estimates for selected items. Using estimates of number on feed as an example, changes between the first estimate and the latest estimate during the past 24 months have averaged 2,000 head, ranging from 0 to 18,000 head. During this period the initial estimate has been above the final estimate 3 times and has been below the final estimate 5 times. This does not imply that the initial estimate is likely to understate or overstate final inventory.

Reliability of Monthly Cattle on Feed Estimates ¹

Item	Root Mean Square Error	90% Confidence Level		Difference Between First and Final Estimates			Number of Months	
		Percent	(000) Head	Average	Smallest	Largest	First Above Final	First Below Final
	<i>Percent</i>	<i>Percent</i>	<i>1,000 Head</i>	<i>1,000 Head</i>	<i>1,000 Head</i>	<i>1,000 Head</i>	<i>Number</i>	<i>Number</i>
Number on Feed	0.0	0.1	11.1	2	0	18	3	5
Placements	0.2	0.3	7.4	2	0	9	1	7
Marketings	0.2	0.3	5.3	2	0	7	3	4

¹ Based on data for the past 24 months.

Information Contacts

Listed below are the commodity specialists in the Livestock Branch of the National Agricultural Statistics Service to contact for additional information.

Dan Kerestes, Chief, Livestock Branch (202) 720-3570

Livestock Section

Scott Hollis, Head, Livestock Section (202) 690-2424

Jim Collom - Dairy Products (202) 690-3236

Joe Gaynor - Dairy Products Prices (202) 690-2168

Jason Hardegree - Cattle, Cattle on Feed (202) 720-3040

Sherry Bertramsen - Livestock Slaughter (515) 284-4340

Everett Olbert - Sheep and Goats (202) 720-4751

Mike Miller - Milk Production and Milk Cows (202) 720-3278

Nick Streff - Hogs and Pigs (202) 720-3106

ACCESS TO REPORTS!!

For your convenience, there are several ways to obtain NASS reports, data products, and services:

INTERNET ACCESS

All NASS reports are available free of charge. For free access, connect to the Internet and go to the NASS Home Page at: www.nass.usda.gov.

E-MAIL SUBSCRIPTION

All NASS reports are available by subscription free of charge direct to your e-mail address. Starting with the NASS Home Page at www.nass.usda.gov, under the right navigation, *Receive reports by Email*, click on **National** or **State**. Follow the instructions on the screen.

PRINTED REPORTS OR DATA PRODUCTS

CALL OUR TOLL-FREE ORDER DESK: 800-999-6779 (U.S. and Canada)
Other areas, please call 703-605-6220 FAX: 703-605-6880
(Visa, MasterCard, check, or money order acceptable for payment.)

ASSISTANCE

For **assistance** with general agricultural statistics or further information about NASS or its products or services, contact the **Agricultural Statistics Hotline** at **800-727-9540**, 7:30 a.m. to 4:00 p.m. ET, or e-mail: nass@nass.usda.gov.

The U.S. Department of Agriculture (USDA) prohibits discrimination in all its programs and activities on the basis of race, color, national origin, age, disability, and where applicable, sex, marital status, familial status, parental status, religion, sexual orientation, genetic information, political beliefs, reprisal, or because all or a part of an individual's income is derived from any public assistance program. (Not all prohibited bases apply to all programs.) Persons with disabilities who require alternative means for communication of program information (Braille, large print, audiotape, etc.) should contact USDA's TARGET Center at (202) 720-2600 (voice and TDD).

To file a complaint of discrimination, write to USDA, Director, Office of Civil Rights, 1400 Independence Avenue, S.W., Washington, D.C. 20250-9410, or call (800) 795-3272 (voice) or (202) 720-6382 (TDD). USDA is an equal opportunity provider and employer.