



Cattle on Feed

Released December 18, 2009, by the National Agricultural Statistics Service (NASS), Agricultural Statistics Board, U.S. Department of Agriculture. For information on *Cattle on Feed* call Jason Hardegreer at (202) 720-3040, office hours 7:30 a.m. to 4:00 p.m. ET.

U.S. Cattle on Feed Down 1 Percent

Cattle and calves on feed for slaughter market in the United States for feedlots with capacity of 1,000 or more head totaled 11.3 million head on December 1, 2009. The inventory was 1 percent below December 1, 2008.

Placements in feedlots during November totaled 1.85 million, 8 percent below 2008. For the month of November, placements were the second lowest since the series began in 1996. Net placements were 1.78 million head. During November, placements of cattle and calves weighing less than 600 pounds were 510,000, 600-699 pounds were 565,000, 700-799 pounds were 395,000, and 800 pounds and greater were 375,000.

Marketings of fed cattle during November totaled 1.63 million, 4 percent above 2008. For the month of November, fed cattle marketings were the third lowest since the series began in 1996.

Other disappearance totaled 66,000 during November, 1 percent below 2008.

**Cattle on Feed: Number on Feed, Placements, Marketings, and
Other Disappearance, 1,000+ Capacity Feedlots,
United States, December 1, 2008-2009**

Item	Number		Percent of Previous Year
	2008	2009	
	<i>1,000 Head</i>	<i>1,000 Head</i>	<i>Percent</i>
On Feed Nov 1	10,972	11,134	101
Placed on Feed During Nov	2,016	1,845	92
Fed Cattle Marketed During Nov	1,575	1,631	104
Other Disappearance During Nov	67	66	99
On Feed Dec 1	11,346	11,282	99

**Cattle on Feed: Number on Feed, Placements, Marketings, and
Other Disappearance, 1,000+ Capacity Feedlots,
United States, November 1, 2008-2009**

Item	Number		Percent of Previous Year
	2008	2009	
	<i>1,000 Head</i>	<i>1,000 Head</i>	<i>Percent</i>
On Feed Oct 1	10,415	10,474	101
Placed on Feed During Oct	2,438	2,474	101
Fed Cattle Marketed During Oct	1,814	1,755	97
Other Disappearance During Oct	67	59	88
On Feed Nov 1	10,972	11,134	101

**Cattle on Feed: Number on Feed, 1,000+ Capacity Feedlots,
by Month, State, and United States 2008-2009**

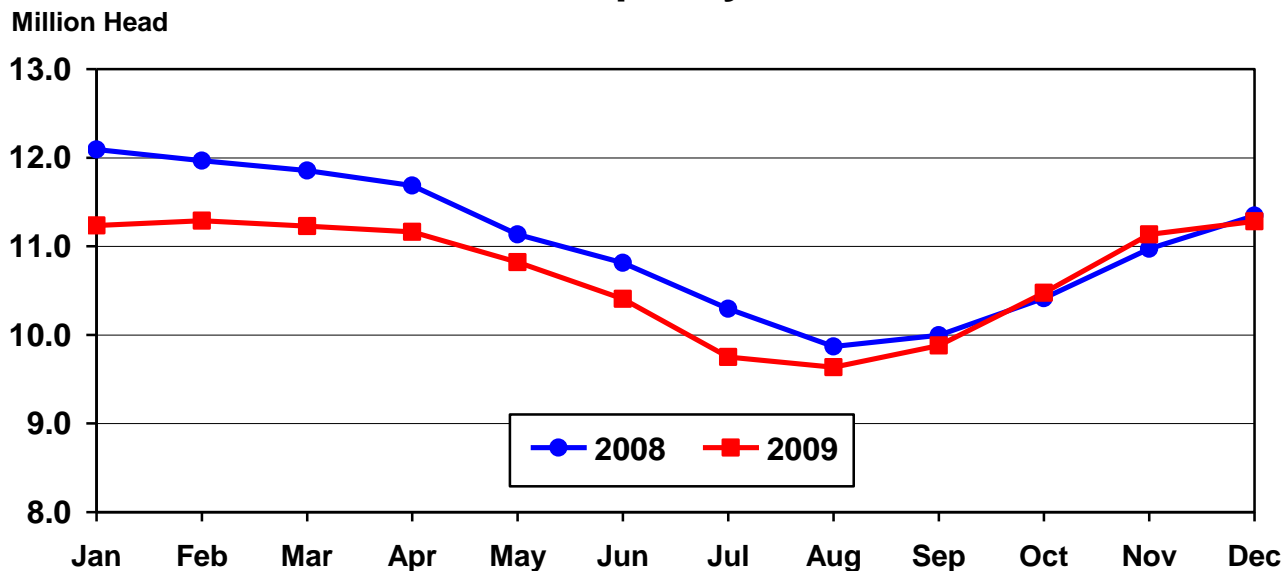
State	Dec 1, 2008	Nov 1, 2009	Dec 1, 2009		
			Number	Percent of Previous Year	Percent of Previous Month
	<i>1,000 Head</i>	<i>1,000 Head</i>	<i>1,000 Head</i>	<i>Percent</i>	<i>Percent</i>
AZ	359	279	282	79	101
CA	495	470	465	94	99
CO	1,010	1,040	1,060	105	102
ID	225	210	215	96	102
IA	500	540	560	112	104
KS	2,310	2,330	2,330	101	100
NE	2,380	2,400	2,410	101	100
NM	168	(D)	(D)	(D)	(D)
OK	335	375	375	112	100
SD	220	205	235	107	115
TX	2,810	2,730	2,760	98	101
WA	169	155	172	102	111
Oth Sts ¹	365	400	418	(X)	105
US	11,346	11,134	11,282	99	101

(D) Withheld to avoid disclosing data for individual operations.

(X) Comparison to 2008 is not applicable.

¹ Includes unpublished New Mexico totals for 2009.

United States Cattle on Feed 1,000+ Capacity Feedlots



**Cattle on Feed: Number Placed on Feed, 1,000+ Capacity Feedlots,
by Month, State, and United States 2008-2009**

State	During Nov 2008	During Oct 2009	During Nov 2009		
			Number	Percent of Previous Year	Percent of Previous Month
	<i>1,000 Head</i>	<i>1,000 Head</i>	<i>1,000 Head</i>	<i>Percent</i>	<i>Percent</i>
AZ	26	29	26	100	90
CA	48	57	50	104	88
CO	185	245	165	89	67
ID	65	50	45	69	90
IA	92	123	108	117	88
KS	405	465	355	88	76
NE	440	620	400	91	65
NM	21	(D)	(D)	(D)	(D)
OK	69	83	57	83	69
SD	57	65	67	118	103
TX	510	610	455	89	75
WA	36	38	47	131	124
Oth Sts ¹	62	89	70	(X)	79
US	2,016	2,474	1,845	92	75

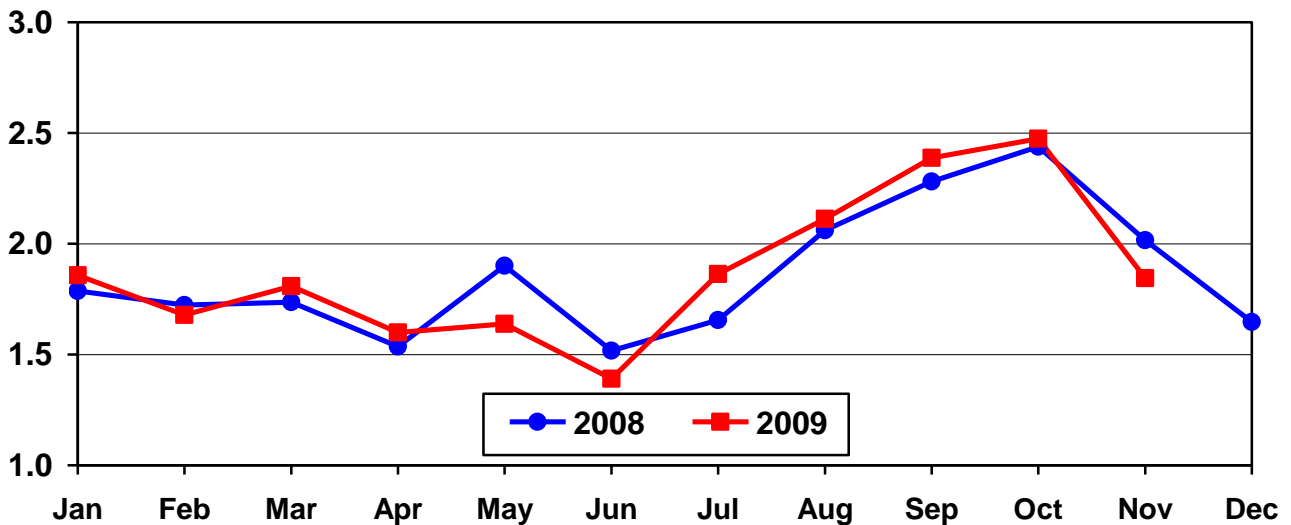
(D) Withheld to avoid disclosing data for individual operations.

(X) Comparison to 2008 is not applicable.

¹ Includes unpublished New Mexico totals for 2009.

**United States Cattle on Feed
1,000+ Capacity Feedlots Number Placed**

Million Head



**Cattle on Feed: Number Placed on Feed by Weight Group, 1,000+ Capacity
Feedlots, by Month, State, and United States, 2008-2009**

State	During November										
	Under 600		600-699		700-799		800 Plus		Total		
	2008	2009	2008	2009	2008	2009	2008	2009	2008	2009	
	<i>1,000 Head</i>	<i>1,000 Head</i>	<i>1,000 Head</i>	<i>1,000 Head</i>	<i>1,000 Head</i>	<i>1,000 Head</i>	<i>1,000 Head</i>	<i>1,000 Head</i>	<i>1,000 Head</i>	<i>1,000 Head</i>	<i>1,000 Head</i>
CO	50	40	55	50	40	35	40	40	185	165	
KS	85	70	125	105	120	110	75	70	405	355	
NE	110	80	160	140	80	80	90	100	440	400	
TX	145	160	180	140	130	100	55	55	510	455	
Oth Sts	175	160	110	130	81	70	110	110	476	470	
US	565	510	630	565	451	395	370	375	2,016	1,845	
	During October										
	Under 600		600-699		700-799		800 Plus		Total		
	2008	2009	2008	2009	2008	2009	2008	2009	2008	2009	
	<i>1,000 Head</i>	<i>1,000 Head</i>	<i>1,000 Head</i>	<i>1,000 Head</i>	<i>1,000 Head</i>	<i>1,000 Head</i>	<i>1,000 Head</i>	<i>1,000 Head</i>	<i>1,000 Head</i>	<i>1,000 Head</i>	
CO	50	50	70	45	45	60	80	90	245	245	
KS	100	85	120	120	125	150	105	110	450	465	
NE	160	160	160	175	100	95	170	190	590	620	
TX	195	150	160	180	190	180	85	100	630	610	
Oth Sts	195	170	105	125	83	94	140	145	523	534	
US	700	615	615	645	543	579	580	635	2,438	2,474	

**Cattle on Feed: Number Marketed, 1,000+ Capacity Feedlots,
by Month, State, and United States 2008-2009**

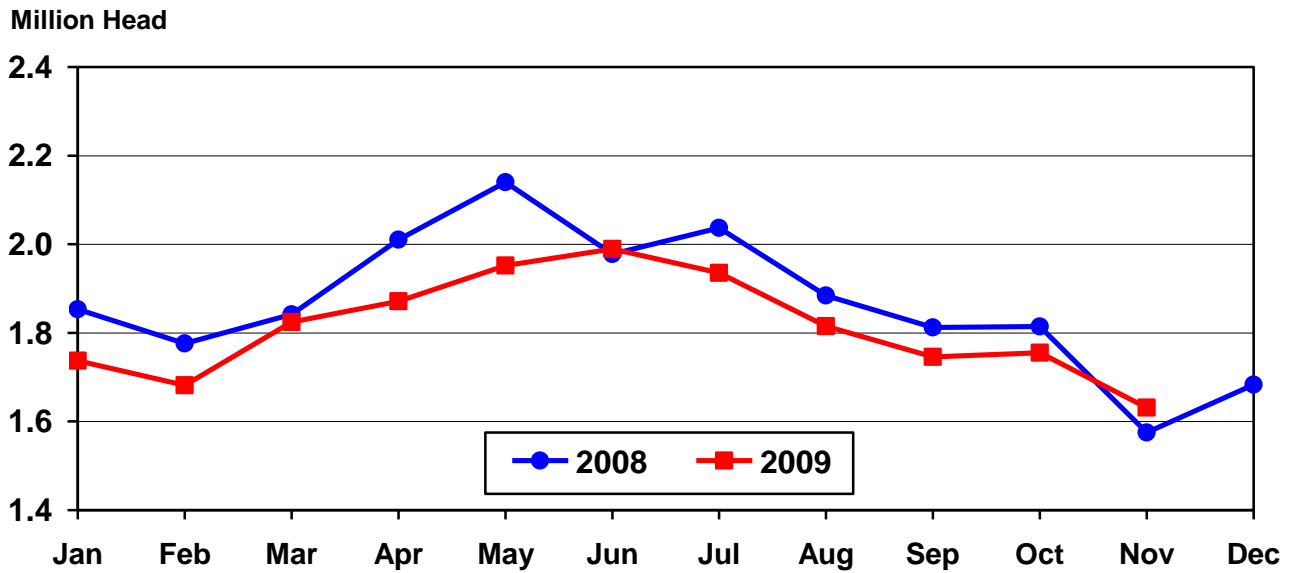
State	During Nov 2008	During Oct 2009	During Nov 2009		
			Number	Percent of Previous Year	Percent of Previous Month
	<i>1,000 Head</i>	<i>1,000 Head</i>	<i>1,000 Head</i>	<i>Percent</i>	<i>Percent</i>
AZ	28	24	22	79	92
CA	50	50	53	106	106
CO	130	160	140	108	88
ID	49	44	39	80	89
IA	75	100	85	113	85
KS	310	340	340	110	100
NE	355	380	380	107	100
NM	23	(D)	(D)	(D)	(D)
OK	52	60	53	102	88
SD	35	54	35	100	65
TX	395	465	405	103	87
WA	29	29	29	100	100
Oth Sts ¹	44	49	50	(X)	102
US	1,575	1,755	1,631	104	93

(D) Withheld to avoid disclosing data for individual operations.

(X) Comparison to 2008 is not applicable.

¹ Includes unpublished New Mexico totals for 2009.

United States Cattle on Feed 1,000+ Capacity Feedlots Number Marketed



**Cattle on Feed: Other Disappearance, 1,000+ Capacity Feedlots,
by Month, State, and United States 2008-2009**

State	During Nov 2008	During Oct 2009	During Nov 2009		
			Number	Percent of Previous Year	Percent of Previous Month
	<i>1,000 Head</i>	<i>1,000 Head</i>	<i>1,000 Head</i>	<i>Percent</i>	<i>Percent</i>
AZ	1	1	1	100	100
CA	3	2	2	67	100
CO	5	5	5	100	100
ID	1	1	1	100	100
IA	2	3	3	150	100
KS	15	15	15	100	100
NE	15	10	10	67	100
NM	2	(D)	(D)	(D)	(D)
OK	2	3	4	200	133
SD	2	1	2	100	200
TX	15	15	20	133	133
WA	1	1	1	100	100
Oth Sts ¹	3	2	2	(X)	100
US	67	59	66	99	112

(D) Withheld to avoid disclosing data for individual operations.

(X) Comparison to 2008 is not applicable.

¹ Includes unpublished New Mexico totals for 2009.

Terms and Definitions of Cattle on Feed Estimates

Cattle on feed are animals being fed a ration of grain, silage, hay and/or protein supplement for slaughter market that are expected to produce a carcass that will grade select or better. It excludes cattle being "backgrounded only" for later sale as feeders or later placement in another feedlot.

Placements are cattle put into a feedlot, fed a ration which will produce a carcass that will grade select or better, and are intended for the slaughter market.

Marketings are cattle shipped out of feedlots to a slaughter market.

Other disappearance includes death loss, movement from feedlots to pasture, and shipments to other feedlots for further feeding.

Reliability of Cattle on Feed Estimates

Survey Procedures: During January and July all known feedlots in the U.S. with capacity of 1,000 or more head are surveyed to provide data for cattle on feed estimates. During the other months, all known feedlots from 16 States are surveyed. The 16 States account for 98 percent of the cattle on feed in feedlots with capacity of 1,000 or more head.

Estimating Procedures: These cattle on feed estimates were prepared by the Agricultural Statistics Board after reviewing recommendations and analysis submitted by each State office. Regional and State survey data were reviewed for reasonableness with each other and with estimates from the previous month when setting the current estimates.

Revision Policy: Revisions to previous estimates are made to improve month to month relationships. Estimates for the previous month are subject to revision in all States each month when current estimates are made. In February, all monthly estimates for the previous year, and the number of feedlots and annual marketings from two years ago are reviewed and subject to revisions. The reviews are primarily based on slaughter data, state check-off or brand data, and any other data that may have been received after the original estimate was made. Estimates will also be reviewed after data from the Census of Agriculture are available. No revisions will be made after that date and estimates become final.

Reliability: Since all 1,000+ capacity cattle on feed operators in every State are not included in the monthly survey, survey estimates are subject to sampling variability. Survey results are also subject to non-sampling errors such as omissions, duplications, and mistakes in reporting, recording, and processing the data. The effects of these errors cannot be measured directly. They are minimized through rigid quality controls in the data collection process and through a careful review of all reported data for consistency and reasonableness.

To assist users in evaluating the reliability of estimates in this report, the "**Root Mean Square Error**" is shown for selected items in the following table. The "Root Mean Square Error" is a statistical measure based on past performance and is computed using the differences between first and latest estimates. The "Root Mean Square Error" for cattle on feed inventory estimates over the past 24 months is less than 0.1 percent (0.04). This means that chances are 2 out of 3 that the final estimate will not be above or below the current estimate of 11.3 million head by more than 0.04 percent. Chances are 9 out of 10 that the difference will not exceed 0.1 percent.

The following table also shows a 24 month record of the range of differences between first and latest estimates for selected items. Using estimates of number on feed as an example, changes between the first estimate and the latest estimate during the past 24 months have averaged 2,000 head, ranging from 0 to 18,000 head. During this period the initial estimate has been above the final estimate 3 times and has been below the final estimate 4 times. This does not imply that the initial estimate is likely to understate or overstate final inventory.

Reliability of Monthly Cattle on Feed Estimates ¹

Item	Root Mean Square Error	90% Confidence Level		Difference Between First and Final Estimates			Number of Months	
		Percent	(000) Head	Average	Smallest	Largest	First Above Final	First Below Final
	<i>Percent</i>	<i>Percent</i>	<i>1,000 Head</i>	<i>1,000 Head</i>	<i>1,000 Head</i>	<i>1,000 Head</i>	<i>Number</i>	<i>Number</i>
Number on Feed	0.0	0.1	11.3	2	0	18	3	4
Placements	0.1	0.3	5.5	1	0	9	1	6
Marketings	0.2	0.3	4.9	2	0	7	3	4

¹ Based on data for the past 24 months.

Information Contacts

Listed below are the commodity specialists in the Livestock Branch of the National Agricultural Statistics Service to contact for additional information.

Dan Kerestes, Chief, Livestock Branch (202) 720-3570

Livestock Section

Scott Hollis, Head, Livestock Section (202) 690-2424

Jim Collom - Dairy Products (202) 690-3236

Joe Gaynor - Dairy Products Prices (202) 690-2168

Jason Hardegree - Cattle, Cattle on Feed (202) 720-3040

Sherry Bertramsen - Livestock Slaughter (515) 284-4340

Everett Olbert - Sheep and Goats (202) 720-4751

Mike Miller - Milk Production and Milk Cows (202) 720-3278

Nick Streff - Hogs and Pigs (202) 720-3106

ACCESS TO REPORTS!!

For your convenience, there are several ways to obtain NASS reports, data products, and services:

INTERNET ACCESS

All NASS reports are available free of charge. For free access, connect to the Internet and go to the NASS Home Page at: www.nass.usda.gov.

E-MAIL SUBSCRIPTION

All NASS reports are available by subscription free of charge direct to your e-mail address. Starting with the NASS Home Page at www.nass.usda.gov, under the right navigation, *Receive reports by Email*, click on **National** or **State**. Follow the instructions on the screen.

PRINTED REPORTS OR DATA PRODUCTS

CALL OUR TOLL-FREE ORDER DESK: 800-999-6779 (U.S. and Canada)
Other areas, please call 703-605-6220 FAX: 703-605-6880
(Visa, MasterCard, check, or money order acceptable for payment.)

ASSISTANCE

For **assistance** with general agricultural statistics or further information about NASS or its products or services, contact the **Agricultural Statistics Hotline** at **800-727-9540**, 7:30 a.m. to 4:00 p.m. ET, or e-mail: nass@nass.usda.gov.

The U.S. Department of Agriculture (USDA) prohibits discrimination in all its programs and activities on the basis of race, color, national origin, age, disability, and where applicable, sex, marital status, familial status, parental status, religion, sexual orientation, genetic information, political beliefs, reprisal, or because all or a part of an individual's income is derived from any public assistance program. (Not all prohibited bases apply to all programs.) Persons with disabilities who require alternative means for communication of program information (Braille, large print, audiotape, etc.) should contact USDA's TARGET Center at (202) 720-2600 (voice and TDD).

To file a complaint of discrimination, write to USDA, Director, Office of Civil Rights, 1400 Independence Avenue, S.W., Washington, D.C. 20250-9410, or call (800) 795-3272 (voice) or (202) 720-6382 (TDD). USDA is an equal opportunity provider and employer.