



Cattle on Feed

Released February 19, 2010, by the National Agricultural Statistics Service (NASS), Agricultural Statistics Board, U.S. Department of Agriculture. For information on *Cattle on Feed* call Jason Hardegree at (202) 720-3040, office hours 7:30 a.m. to 4:00 p.m. ET.

U.S. Cattle on Feed Down 3 Percent

Cattle and calves on feed for slaughter market in the United States for feedlots with capacity of 1,000 or more head totaled 11.0 million head on February 1, 2010. The inventory was 3 percent below February 1, 2009.

Placements in feedlots during January totaled 1.83 million, 2 percent below 2009. Net placements were 1.76 million head. During January, placements of cattle and calves weighing less than 600 pounds were 400,000, 600-699 pounds were 445,000, 700-799 pounds were 560,000, and 800 pounds and greater were 420,000.

Marketings of fed cattle during January totaled 1.77 million, 2 percent above 2009. This is the third lowest fed cattle marketings for the month of January since the series began in 1996.

Other disappearance totaled 70,000 during January, 4 percent above 2009.

2009 Cattle on Feed and Annual Size Group Estimates

Cattle and calves on feed for slaughter market in the United States for feedlots with capacity of 1,000 or more head represented 80.7 percent of all cattle and calves on feed in the United States on January 1, 2010, down from 81.1 on January 1, 2009.

Marketings of fed cattle for feedlots with capacity of 1,000 or more head during 2009 represented 84.7 percent of all cattle marketed from feedlots in the United States, unchanged from 2008.

Special Note

This report contains the 2009 monthly cattle on feed estimates for feedlots with capacity of 1,000 or more head. Also included are the U.S. number of feedlots, inventory, and annual marketings by size group for 2008 and 2009. Data for total U.S. capacity of 1,000 or more head feedlots are also published in this issue.

Contents

Page

Monthly U.S. Cattle on Feed Estimates

Number on Feed, Placements, Marketings and Other Disappearance	1
Number on Feed, 1,000+ Capacity Feedlots, by State	2
Number Placed on Feed, 1,000+ Capacity Feedlots, by State.....	3
Number Marketed and Other Disappearance, by State	4

Annual U.S. Cattle on Feed Estimates

Number on Feed, by Month and State.....	5
Number Placed on Feed, by Month and State	6
Number Placed on Feed by Weight Group, by Month and State	7
Number Marketed, by Month and State	11
Other Disappearance, by Month and State	12
Number on Feed by Class, by Quarter and State.....	13

U. S. Feedlots, 2008-2009

Feedlots, Inventory and Marketings by Size of Feedlot.....	14
Total Feedlot Capacity, 1,000+ Capacity Feedlots	14

Reliability Statement	15
-----------------------------	----

Information Contacts.....	16
---------------------------	----

**Cattle on Feed: Number on Feed, Placements, Marketings, and
Other Disappearance, 1,000+ Capacity Feedlots,
United States, February 1, 2009-2010**

Item	Number		Percent of Previous Year
	2009	2010	
	<i>1,000 Head</i>	<i>1,000 Head</i>	<i>Percent</i>
On Feed Jan 1	11,234	*11,008	98
Placed on Feed During Jan	1,858	1,825	98
Fed Cattle Marketed During Jan	1,737	1,774	102
Other Disappearance During Jan	67	70	104
On Feed Feb 1	11,288	10,989	97

* Revised.

**Cattle on Feed: Number on Feed, Placements, Marketings, and
Other Disappearance, 1,000+ Capacity Feedlots,
United States, January 1, 2009-2010**

Item	Number		Percent of Previous Year
	2009	2010	
	<i>1,000 Head</i>	<i>1,000 Head</i>	<i>Percent</i>
On Feed Dec 1	11,346	11,277	99
Placed on Feed During Dec	1,647	1,546	94
Fed Cattle Marketed During Dec	1,683	*1,743	104
Other Disappearance During Dec	76	72	95
On Feed Jan 1	11,234	*11,008	98

* Revised.

**Cattle on Feed: Number on Feed by Class, 1,000+ Capacity Feedlots,
United States, January 1, 2009-2010**

Item	Number		Percent of Previous Year
	2009	2010	
	<i>1,000 Head</i>	<i>1,000 Head</i>	<i>Percent</i>
Class on Feed Jan 1			
Steers and Steer Calves	7,071	6,877	97
Heifers and Heifer Calves	4,100	*4,068	99
Cows and Bulls	63	63	100

* Revised.

**Cattle on Feed: Number on Feed, 1,000+ Capacity Feedlots,
by Month, State, and United States 2009-2010**

State	Feb 1, 2009	Jan 1, 2010	Feb 1, 2010		
			Number	Percent of Previous Year	Percent of Previous Month
	<i>1,000 Head</i>	<i>1,000 Head</i>	<i>1,000 Head</i>	<i>Percent</i>	<i>Percent</i>
AZ	349	*287	290	83	101
CA	480	465	455	95	98
CO	1,020	1,010	960	94	95
ID	215	215	205	95	95
IA	520	570	600	115	105
KS	2,260	2,250	2,240	99	100
NE	2,400	2,360	2,370	99	100
NM	158	(D)	(D)	(D)	(D)
OK	330	365	365	111	100
SD	225	235	235	104	100
TX	2,810	2,680	2,700	96	101
WA	151	166	166	110	100
Oth Sts ¹	370	405	403	(X)	100
US	11,288	*11,008	10,989	97	100

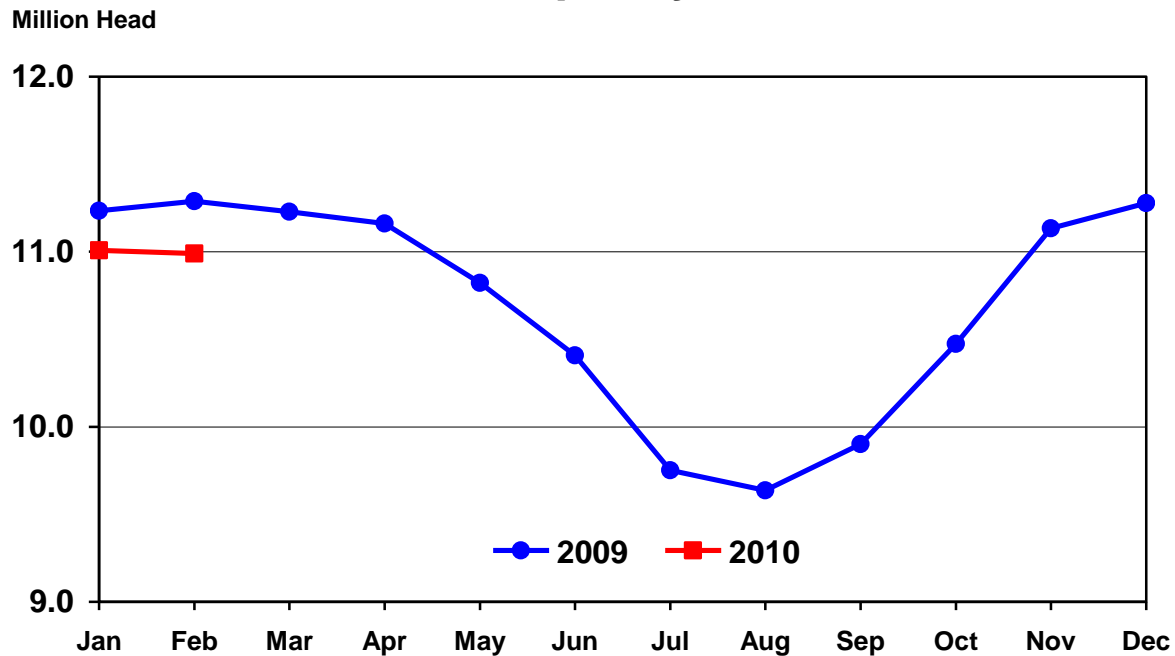
* Revised.

(D) Withheld to avoid disclosing data for individual operations.

(X) Comparison to 2009 is not applicable.

¹ Beginning in July 2009, New Mexico is included in the Other State total.

United States Cattle on Feed 1,000+ Capacity Feedlots



**Cattle on Feed: Number Placed on Feed, 1,000+ Capacity Feedlots,
by Month, State, and United States 2009-2010**

State	During Jan 2009	During Dec 2009	During Jan 2010		
			Number	Percent of Previous Year	Percent of Previous Month
	<i>1,000 Head</i>	<i>1,000 Head</i>	<i>1,000 Head</i>	<i>Percent</i>	<i>Percent</i>
AZ	27	32	28	104	88
CA	51	63	54	106	86
CO	200	110	130	65	118
ID	37	41	30	81	73
IA	81	85	95	117	112
KS	435	375	475	109	127
NE	400	320	410	103	128
NM	9	(D)	(D)	(D)	(D)
OK	54	50	60	111	120
SD	43	38	35	81	92
TX	440	350	420	95	120
WA	30	29	29	97	100
Oth Sts ¹	51	53	59	(X)	111
US	1,858	1,546	1,825	98	118

(D) Withheld to avoid disclosing data for individual operations.

(X) Comparison to 2009 is not applicable.

¹ Beginning in July 2009, New Mexico is included in the Other State total.

**Cattle on Feed: Number Placed on Feed by Weight Group, 1,000+ Capacity
Feedlots, by Month, State, and United States, 2008-2010**

State	During January									
	Under 600		600-699		700-799		800 Plus		Total	
	2009	2010	2009	2010	2009	2010	2009	2010	2009	2010
	<i>1,000 Head</i>	<i>1,000 Head</i>	<i>1,000 Head</i>	<i>1,000 Head</i>	<i>1,000 Head</i>	<i>1,000 Head</i>	<i>1,000 Head</i>	<i>1,000 Head</i>	<i>1,000 Head</i>	<i>1,000 Head</i>
CO	20	20	55	25	55	45	70	40	200	130
KS	60	60	130	125	160	190	85	100	435	475
NE	65	70	95	110	130	120	110	110	400	410
TX	105	135	135	100	135	115	65	70	440	420
Oth Sts	130	115	90	85	73	90	90	100	383	390
US	380	400	505	445	553	560	420	420	1,858	1,825
	During December									
	Under 600		600-699		700-799		800 Plus		Total	
	2008	2009	2008	2009	2008	2009	2008	2009	2008	2009
	<i>1,000 Head</i>	<i>1,000 Head</i>	<i>1,000 Head</i>	<i>1,000 Head</i>	<i>1,000 Head</i>	<i>1,000 Head</i>	<i>1,000 Head</i>	<i>1,000 Head</i>	<i>1,000 Head</i>	<i>1,000 Head</i>
CO	25	25	45	30	40	30	40	25	150	110
KS	70	70	120	100	120	135	70	70	380	375
NE	55	60	100	80	100	100	90	80	345	320
TX	140	140	135	110	90	70	40	30	405	350
Oth Sts	135	135	90	100	57	66	85	90	367	391
US	425	430	490	420	407	401	325	295	1,647	1,546

**Cattle on Feed: Number Marketed, 1,000+ Capacity Feedlots,
by Month, State, and United States 2009-2010**

State	During Jan 2009	During Dec 2009	During Jan 2010		
			Number	Percent of Previous Year	Percent of Previous Month
	<i>1,000 Head</i>	<i>1,000 Head</i>	<i>1,000 Head</i>	<i>Percent</i>	<i>Percent</i>
AZ	35	*26	24	69	92
CA	59	59	57	97	97
CO	170	155	170	100	110
ID	41	35	39	95	111
IA	59	73	62	105	85
KS	430	445	475	110	107
NE	360	350	380	106	109
NM	13	(D)	(D)	(D)	(D)
OK	57	58	58	102	100
SD	35	36	34	97	94
TX	405	410	390	96	95
WA	35	34	28	80	82
Oth Sts ¹	38	62	57	(X)	92
US	1,737	*1,743	1,774	102	102

* Revised.

(D) Withheld to avoid disclosing data for individual operations.

(X) Comparison to 2009 is not applicable.

¹ Beginning in July 2009, New Mexico is included in the Other State total.

**Cattle on Feed: Other Disappearance, 1,000+ Capacity Feedlots,
by Month, State, and United States 2009-2010**

State	During Jan 2009	During Dec 2009	During Jan 2010		
			Number	Percent of Previous Year	Percent of Previous Month
	<i>1,000 Head</i>	<i>1,000 Head</i>	<i>1,000 Head</i>	<i>Percent</i>	<i>Percent</i>
AZ	1	1	1	100	100
CA	2	4	7	350	175
CO	10	5	10	100	200
ID	1	1	1	100	100
IA	2	2	3	150	150
KS	15	10	10	67	100
NE	10	20	20	200	100
NM	2	(D)	(D)	(D)	(D)
OK	2	2	2	100	100
SD	3	2	1	33	50
TX	15	20	10	67	50
WA	1	1	1	100	100
Oth Sts ¹	3	4	4	(X)	100
US	67	72	70	104	97

(D) Withheld to avoid disclosing data for individual operations.

(X) Comparison to 2009 is not applicable.

¹ Beginning in July 2009, New Mexico is included in the Other State total.

**Cattle on Feed: Number on Feed, 1,000+ Capacity Feedlots,
by Month, State, and United States, 2009**

State	Jan 1	Feb 1	Mar 1	Apr 1	May 1	Jun 1
	<i>1,000 Head</i>	<i>1,000 Head</i>	<i>1,000 Head</i>	<i>1,000 Head</i>	<i>1,000 Head</i>	<i>1,000 Head</i>
AZ	358	349	342	330	311	301
CA	490	480	460	445	450	470
CO	1,000	1,020	1,040	1,040	1,010	980
ID	220	215	215	210	210	205
IA	500	520	520	530	540	530
KS	2,270	2,260	2,290	2,280	2,180	2,080
NE	2,370	2,400	2,330	2,320	2,270	2,110
NM	164	158	148	137	120	105
OK	335	330	330	330	315	310
SD	220	225	225	225	230	220
TX	2,790	2,810	2,820	2,810	2,680	2,610
WA	157	151	153	160	161	156
Oth Sts	360	370	355	345	345	330
US	11,234	11,288	11,228	11,162	10,822	10,407
	<i>1,000 Head</i>	<i>1,000 Head</i>	<i>1,000 Head</i>	<i>1,000 Head</i>	<i>1,000 Head</i>	<i>1,000 Head</i>
	Jul 1	Aug 1	Sep 1	Oct 1	Nov 1	Dec 1
AZ	287	275	275	275	279	282
CA	460	450	455	465	470	465
CO	910	850	860	960	1,040	1,060
ID	200	195	195	205	210	210
IA	520	510	510	520	540	560
KS	1,920	1,920	2,050	2,220	2,330	2,330
NE	1,920	1,920	2,020	2,170	2,400	2,410
NM	(D)	(D)	(D)	(D)	(D)	(D)
OK	295	310	325	355	375	375
SD	205	190	185	195	205	235
TX	2,490	2,510	2,530	2,600	2,730	2,760
WA	146	138	140	147	155	172
Oth Sts ¹	399	369	*355	362	400	418
US	9,752	9,637	*9,900	10,474	11,134	11,277

* Revised.

(D) Withheld to avoid disclosing data for individual operations.

¹ Includes unpublished New Mexico totals beginning in July 2009.

**Cattle on Feed: Number Placed on Feed, 1,000+ Capacity Feedlots,
by Month, State, and United States, 2009**

State	During					
	Dec ¹	Jan	Feb	Mar	Apr	May
	<i>1,000 Head</i>	<i>1,000 Head</i>	<i>1,000 Head</i>	<i>1,000 Head</i>	<i>1,000 Head</i>	<i>1,000 Head</i>
AZ	29	27	26	24	21	26
CA	59	51	36	48	68	74
CO	150	200	190	165	150	140
ID	36	37	38	26	30	35
IA	66	81	62	77	79	60
KS	380	435	420	395	330	345
NE	345	400	310	360	350	310
NM	16	9	9	10	11	16
OK	49	54	51	68	52	67
SD	38	43	43	46	39	40
TX	405	440	430	510	395	455
WA	28	30	28	35	26	31
Oth Sts	46	51	35	44	49	39
US	1,647	1,858	1,678	1,808	1,600	1,638
	During					
	Jun	Jul	Aug	Sep	Oct	Nov
	<i>1,000 Head</i>	<i>1,000 Head</i>	<i>1,000 Head</i>	<i>1,000 Head</i>	<i>1,000 Head</i>	<i>1,000 Head</i>
AZ	21	25	28	27	29	26
CA	43	45	53	56	57	50
CO	125	125	205	260	245	165
ID	32	33	42	53	50	44
IA	59	61	74	105	123	108
KS	305	480	550	510	465	355
NE	270	410	460	550	620	400
NM	(D)	(D)	(D)	(D)	(D)	(D)
OK	44	69	73	80	83	57
SD	25	29	36	52	65	67
TX	380	495	510	570	610	455
WA	30	33	31	35	38	47
Oth Sts ²	57	58	*57	90	89	70
US	1,391	1,863	*2,119	2,388	2,474	1,844

* Revised.

(D) Withheld to avoid disclosing data for individual operations.

¹ December prior year.

² Includes unpublished New Mexico totals beginning in June 2009.

**Cattle on Feed: Number Placed on Feed by Weight Group, 1,000+ Capacity
Feedlots, by Month, State, and United States, 2009**

State	During December Prior Year				
	Under 600	600-699	700-799	800 Plus	Total
	<i>1,000 Head</i>	<i>1,000 Head</i>	<i>1,000 Head</i>	<i>1,000 Head</i>	<i>1,000 Head</i>
CO	25	45	40	40	150
KS	70	120	120	70	380
NE	55	100	100	90	345
TX	140	135	90	40	405
Oth Sts	135	90	57	85	367
US	425	490	407	325	1,647
	During January				
	Under 600	600-699	700-799	800 Plus	Total
	<i>1,000 Head</i>	<i>1,000 Head</i>	<i>1,000 Head</i>	<i>1,000 Head</i>	<i>1,000 Head</i>
CO	20	55	55	70	200
KS	60	130	160	85	435
NE	65	95	130	110	400
TX	105	135	135	65	440
Oth Sts	130	90	73	90	383
US	380	505	553	420	1,858
	During February				
	Under 600	600-699	700-799	800 Plus	Total
	<i>1,000 Head</i>	<i>1,000 Head</i>	<i>1,000 Head</i>	<i>1,000 Head</i>	<i>1,000 Head</i>
CO	20	45	55	70	190
KS	50	95	165	110	420
NE	50	60	100	100	310
TX	100	115	140	75	430
Oth Sts	100	70	78	80	328
US	320	385	538	435	1,678

--continued

**Cattle on Feed: Number Placed on Feed by Weight Group, 1,000+ Capacity
Feedlots, by Month, State, and United States, 2009 (continued)**

State	During March				
	Under 600	600-699	700-799	800 Plus	Total
	<i>1,000 Head</i>	<i>1,000 Head</i>	<i>1,000 Head</i>	<i>1,000 Head</i>	<i>1,000 Head</i>
CO	20	25	55	65	165
KS	45	85	135	130	395
NE	40	60	110	150	360
TX	90	110	200	110	510
Oth Sts	110	60	93	115	378
US	305	340	593	570	1,808
	During April				
	Under 600	600-699	700-799	800 Plus	Total
	<i>1,000 Head</i>	<i>1,000 Head</i>	<i>1,000 Head</i>	<i>1,000 Head</i>	<i>1,000 Head</i>
CO	20	30	40	60	150
KS	55	70	90	115	330
NE	55	65	90	140	350
TX	125	90	95	85	395
Oth Sts	100	60	90	125	375
US	355	315	405	525	1,600
	During May				
	Under 600	600-699	700-799	800 Plus	Total
	<i>1,000 Head</i>	<i>1,000 Head</i>	<i>1,000 Head</i>	<i>1,000 Head</i>	<i>1,000 Head</i>
CO	25	25	45	45	140
KS	65	70	110	100	345
NE	30	60	80	140	310
TX	170	100	110	75	455
Oth Sts	105	50	88	145	388
US	395	305	433	505	1,638

--continued

**Cattle on Feed: Number Placed on Feed by Weight Group, 1,000+ Capacity
Feedlots, by Month, State, and United States, 2009 (continued)**

State	During June				
	Under 600	600-699	700-799	800 Plus	Total
	<i>1,000 Head</i>	<i>1,000 Head</i>	<i>1,000 Head</i>	<i>1,000 Head</i>	<i>1,000 Head</i>
CO	15	20	35	55	125
KS	55	70	95	85	305
NE	50	55	55	110	270
TX	110	95	125	50	380
Oth Sts	85	50	61	115	311
US	315	290	371	415	1,391
	During July				
	Under 600	600-699	700-799	800 Plus	Total
	<i>1,000 Head</i>	<i>1,000 Head</i>	<i>1,000 Head</i>	<i>1,000 Head</i>	<i>1,000 Head</i>
CO	15	15	35	60	125
KS	80	90	150	160	480
NE	60	80	95	175	410
TX	200	125	105	65	495
Oth Sts	100	55	73	125	353
US	455	365	458	585	1,863
	During August				
	Under 600	600-699	700-799	800 Plus	Total
	<i>1,000 Head</i>	<i>1,000 Head</i>	<i>1,000 Head</i>	<i>1,000 Head</i>	<i>1,000 Head</i>
CO	15	20	50	120	205
KS	60	100	175	215	550
NE	60	80	100	220	460
TX	200	140	110	60	510
Oth Sts	100	55	*79	*160	*394
US	435	395	*514	*775	*2,119

See footnote(s) at end of table.

--continued

**Cattle on Feed: Number Placed on Feed by Weight Group, 1,000+ Capacity
Feedlots, by Month, State, and United States, 2009 (continued)**

State	During September				
	Under 600	600-699	700-799	800 Plus	Total
	<i>1,000 Head</i>	<i>1,000 Head</i>	<i>1,000 Head</i>	<i>1,000 Head</i>	<i>1,000 Head</i>
CO	20	25	65	150	260
KS	85	115	155	155	510
NE	65	90	120	275	550
TX	175	160	160	75	570
Oth Sts	145	60	93	200	498
US	490	450	593	855	2,388
	During October				
	Under 600	600-699	700-799	800 Plus	Total
	<i>1,000 Head</i>	<i>1,000 Head</i>	<i>1,000 Head</i>	<i>1,000 Head</i>	<i>1,000 Head</i>
CO	50	45	60	90	245
KS	85	120	150	110	465
NE	160	175	95	190	620
TX	150	180	180	100	610
Oth Sts	170	125	94	145	534
US	615	645	579	635	2,474
	During November				
	Under 600	600-699	700-799	800 Plus	Total
	<i>1,000 Head</i>	<i>1,000 Head</i>	<i>1,000 Head</i>	<i>1,000 Head</i>	<i>1,000 Head</i>
CO	40	50	35	40	165
KS	70	105	110	70	355
NE	80	140	80	100	400
TX	160	140	100	55	455
Oth Sts	160	130	69	110	469
US	510	565	394	375	1,844

* Revised.

**Cattle on Feed: Number Marketed, 1,000+ Capacity Feedlots,
by Month, State, and United States, 2009**

State	During					
	Dec ¹	Jan	Feb	Mar	Apr	May
	<i>1,000 Head</i>	<i>1,000 Head</i>	<i>1,000 Head</i>	<i>1,000 Head</i>	<i>1,000 Head</i>	<i>1,000 Head</i>
AZ	29	35	32	35	38	35
CA	60	59	54	60	61	52
CO	155	170	165	155	165	145
ID	39	41	37	30	29	39
IA	64	59	61	66	68	68
KS	405	430	375	395	410	425
NE	340	360	370	365	395	450
NM	18	13	18	19	25	28
OK	46	57	49	66	66	71
SD	37	35	39	44	33	44
TX	405	405	410	510	510	510
WA	38	35	25	27	24	35
Oth Sts	47	38	47	52	47	50
US	1,683	1,737	1,682	1,824	1,871	1,952
	During					
	Jun	Jul	Aug	Sep	Oct	Nov
	<i>1,000 Head</i>	<i>1,000 Head</i>	<i>1,000 Head</i>	<i>1,000 Head</i>	<i>1,000 Head</i>	<i>1,000 Head</i>
AZ	34	36	27	26	24	22
CA	51	53	46	44	50	53
CO	190	180	190	155	160	140
ID	36	37	40	42	44	43
IA	67	70	73	94	100	85
KS	455	470	405	330	340	340
NE	440	400	350	395	380	380
NM	(D)	(D)	(D)	(D)	(D)	(D)
OK	58	52	56	48	60	53
SD	39	43	40	41	54	35
TX	490	470	480	485	465	405
WA	39	40	28	27	29	29
Oth Sts ²	90	84	*65	*80	49	50
US	1,989	1,935	*1,800	*1,767	1,755	1,635

* Revised.

(D) Withheld to avoid disclosing data for individual operations.

¹ December prior year.

² Includes unpublished New Mexico totals beginning in June 2009.

**Cattle on Feed: Other Disappearance, 1,000+ Capacity Feedlots,
by Month, State, and United States, 2009**

State	During					
	Dec ¹	Jan	Feb	Mar	Apr	May
	<i>1,000 Head</i>	<i>1,000 Head</i>	<i>1,000 Head</i>	<i>1,000 Head</i>	<i>1,000 Head</i>	<i>1,000 Head</i>
AZ	1	1	1	1	2	1
CA	4	2	2	3	2	2
CO	5	10	5	10	15	25
ID	2	1	1	1	1	1
IA	2	2	1	1	1	2
KS	15	15	15	10	20	20
NE	15	10	10	5	5	20
NM	2	2	1	2	3	3
OK	3	2	2	2	1	1
SD	1	3	4	2	1	6
TX	20	15	10	10	15	15
WA	2	1	1	1	1	1
Oth Sts	4	3	3	2	2	4
US	76	67	56	50	69	101
	During					
	Jun	Jul	Aug	Sep	Oct	Nov
	<i>1,000 Head</i>	<i>1,000 Head</i>	<i>1,000 Head</i>	<i>1,000 Head</i>	<i>1,000 Head</i>	<i>1,000 Head</i>
AZ	1	1	1	1	1	1
CA	2	2	2	2	2	2
CO	5	5	5	5	5	5
ID	1	1	2	1	1	1
IA	2	1	1	1	3	3
KS	10	10	15	10	15	15
NE	20	10	10	5	10	10
NM	(D)	(D)	(D)	(D)	(D)	(D)
OK	1	2	2	2	3	4
SD	1	1	1	1	1	2
TX	10	5	10	15	15	20
WA	1	1	1	1	1	1
Oth Sts ²	3	4	6	3	2	2
US	57	43	56	47	59	66

(D) Withheld to avoid disclosing data for individual operations.

¹ December prior year.

² Includes unpublished New Mexico totals beginning in June 2009.

**Cattle on Feed: Number on Feed by Class, 1,000+ Capacity Feedlots,
by Quarter, State, and United States, 2009**

State	Steers & Steer Calves				Heifers & Heifer Calves			
	Jan 1	Apr 1	Jul 1	Oct 1	Jan 1	Apr 1	Jul 1	Oct 1
	<i>1,000 Head</i>	<i>1,000 Head</i>	<i>1,000 Head</i>	<i>1,000 Head</i>	<i>1,000 Head</i>	<i>1,000 Head</i>	<i>1,000 Head</i>	<i>1,000 Head</i>
AZ	357	329	286	272	1	1	1	1
CA	440	400	410	410	50	45	50	55
CO	610	670	615	650	385	365	290	305
ID	118	103	105	113	97	97	94	91
IA	345	380	365	365	155	150	155	155
KS	1,210	1,190	970	1,210	1,045	1,085	945	1,005
NE	1,460	1,400	1,130	1,240	900	910	785	915
NM	89	72	(D)	(D)	75	65	(D)	(D)
OK	215	190	173	215	120	140	122	140
SD	107	125	105	100	92	85	80	81
TX	1,770	1,780	1,500	1,520	1,018	1,028	989	1,079
WA	95	90	80	87	61	69	65	59
Oth Sts ¹	255	255	253	234	101	87	143	126
US	7,071	6,984	5,992	6,416	4,100	4,127	3,719	4,012
	Cows and Bulls							
	Jan 1	Apr 1	Jul 1	Oct 1				
	<i>1,000 Head</i>	<i>1,000 Head</i>	<i>1,000 Head</i>	<i>1,000 Head</i>				
AZ		0	0	0	0			2
CA		0	0	0	0			0
CO		5	5	5	5			5
ID		5	10	1	1			1
IA		0	0	0	0			0
KS		15	5	5	5			5
NE		10	10	5	5			15
NM		0	0	(D)	(D)			(D)
OK		0	0	0	0			0
SD		21	15	20	20			14
TX		2	2	1	1			1
WA		1	1	1	1			1
Oth Sts ¹		4	3	3	3			2
US		63	51	41	41			46

(D) Withheld to avoid disclosing data for individual operations.

¹ Includes unpublished New Mexico totals beginning in July 2009.

**Cattle on Feed: Number of Feedlots, Inventory, and Marketings,
by Size of Feedlot, United States 2008-2009**

Feedlot Capacity	2008			2009		
	Lots	Inventory ¹	Cattle Marketed	Lots	Inventory ¹	Cattle Marketed
	<i>Number</i>	<i>1,000 Head</i>	<i>1,000 Head</i>	<i>Number</i>	<i>1,000 Head</i>	<i>1,000 Head</i>
Less than 1,000 head	80,000	2,621.7	4,045	80,000	2,634.2	3,914
1,000 head or more	2,170	11,234	22,404	2,170	11,008	21,690
1,000 - 1,999	810	414	779	810	438	770
2,000 - 3,999	570	780	1,390	575	800	1,400
4,000 - 7,999	350	1,070	1,970	340	1,010	1,760
8,000 - 15,999	180	1,250	2,535	185	1,250	2,470
16,000 - 23,999	80	1,120	2,260	75	990	1,920
24,000 - 31,999	52	1,070	2,140	57	1,120	2,290
32,000 - 49,999	70	2,220	4,380	69	2,020	4,080
50,000 and Over	58	3,310	6,950	59	3,380	7,000
All Feedlots	82,170	13,855.7	26,449	82,170	13,642.2	25,604

¹ Inventory estimates as of January 1 of the following year.

**Cattle on Feed: Total Feedlot Capacity, 1000+ Capacity Feedlots,
United States, January 1, 2009-2010**

Item	Feedlot Capacity in Number of Head	
	2009	2010
	<i>1,000 Head</i>	<i>1,000 Head</i>
US	16,700	16,800

Terms and Definitions of Cattle on Feed Estimates

Number of feedlots is the number of lots operating at the end of the year with inventory of cattle on feed.

Cattle on feed are animals being fed a ration of grain, silage, hay and/or protein supplement for slaughter market that are expected to produce a carcass that will grade select or better. It excludes cattle being "backgrounded only" for later sale as feeders or later placement in another feedlot.

Placements are cattle put into a feedlot, fed a ration which will produce a carcass that will grade select or better, and are intended for the slaughter market.

Marketings are cattle shipped out of feedlots to a slaughter market.

Other disappearance includes death loss, movement from feedlots to pasture, and shipments to other feedlots for further feeding.

Reliability of Cattle on Feed Estimates

Survey Procedures: During January and July all known feedlots in the U.S. with capacity of 1,000 or more head are surveyed to provide data for cattle on feed estimates. During the other months, all known feedlots from 16 States are surveyed. The 16 States account for 98 percent of the cattle on feed in feedlots with capacity of 1,000 or more head.

Estimating Procedures: These cattle on feed estimates were prepared by the Agricultural Statistics Board after reviewing recommendations and analysis submitted by each State office. Regional and State survey data were reviewed for reasonableness with each other and with estimates from the previous month when setting the current estimates.

Revision Policy: Revisions to previous estimates are made to improve month to month relationships. Estimates for the previous month are subject to revision in all States each month when current estimates are made. In February, all monthly estimates for the previous year, and the number of feedlots and annual marketings from two years ago are reviewed and subject to revisions. The reviews are primarily based on slaughter data, state check-off or brand data, and any other data that may have been received after the original estimate was made. Estimates will also be reviewed after data from the Census of Agriculture are available. No revisions will be made after that date and estimates become final.

Reliability: Since all 1,000+ capacity cattle on feed operators in every State are not included in the monthly survey, survey estimates are subject to sampling variability. Survey results are also subject to non-sampling errors such as omissions, duplications, and mistakes in reporting, recording, and processing the data. The effects of these errors cannot be measured directly. They are minimized through rigid quality controls in the data collection process and through a careful review of all reported data for consistency and reasonableness.

To assist users in evaluating the reliability of estimates in this report, the "**Root Mean Square Error**" is shown for selected items in the following table. The "Root Mean Square Error" is a statistical measure based on past performance and is computed using the differences between first and latest estimates. The "Root Mean Square Error" for cattle on feed inventory estimates over the past 24 months is 0.03 percent. This means that chances are 2 out of 3 that the final estimate will not be above or below the current estimate of 11.0 million head by more than 0.03 percent. Chances are 9 out of 10 that the difference will not exceed 0.04 percent.

The following table also shows a 24 month record of the range of differences between first and latest estimates for selected items. Using estimates of number on feed as an example, changes between the first estimate and the latest estimate during the past 24 months have averaged 1,000 head, ranging from 0 to 10,000 head. During this period the initial estimate has been above the final estimate 4 times and has been below the final estimate 3 times. This does not imply that the initial estimate is likely to understate or overstate final inventory.

Reliability of Monthly Cattle on Feed Estimates ¹

Item	Root Mean Square Error	90% Confidence Level		Difference Between First and Final Estimates			Number of Months	
		Percent	(000) Head	Average	Smallest	Largest	First Above Final	First Below Final
	<i>Percent</i>	<i>Percent</i>	<i>1,000 Head</i>	<i>1,000 Head</i>	<i>1,000 Head</i>	<i>1,000 Head</i>	<i>Number</i>	<i>Number</i>
Number on Feed	0.03	0.04	4.4	1	0	10	4	3
Placements	0.12	0.20	3.7	1	0	6	2	5
Marketings	0.15	0.25	4.5	2	0	7	3	5

¹ Based on data for the past 24 months.

Information Contacts

Listed below are the commodity specialists in the Livestock Branch of the National Agricultural Statistics Service to contact for additional information.

Dan Kerestes, Chief, Livestock Branch (202) 720-3570

Livestock Section

Scott Hollis, Head, Livestock Section (202) 690-2424
 Jim Collom - Dairy Products (202) 690-3236
 Joe Gaynor - Dairy Products Prices (202) 690-2168
 Jason Hardegree - Cattle, Cattle on Feed (202) 720-3040
 Sherry Bertramsen - Livestock Slaughter (515) 284-4340
 Everett Olbert - Sheep and Goats (202) 720-4751
 Mike Miller - Milk Production and Milk Cows (202) 720-3278
 Nick Streff - Hogs and Pigs (202) 720-3106

ACCESS TO REPORTS!!

For your convenience, there are several ways to obtain NASS reports, data products, and services:

INTERNET ACCESS

All NASS reports are available free of charge. For free access, connect to the Internet and go to the NASS Home Page at: www.nass.usda.gov.

E-MAIL SUBSCRIPTION

All NASS reports are available by subscription free of charge direct to your e-mail address. Starting with the NASS Home Page at www.nass.usda.gov, under the right navigation, *Receive reports by Email*, click on **National** or **State**. Follow the instructions on the screen.

PRINTED REPORTS OR DATA PRODUCTS

CALL OUR TOLL-FREE ORDER DESK: 800-999-6779 (U.S. and Canada)
Other areas, please call 703-605-6220 FAX: 703-605-6880
(Visa, MasterCard, check, or money order acceptable for payment.)

ASSISTANCE

For **assistance** with general agricultural statistics or further information about NASS or its products or services, contact the **Agricultural Statistics Hotline** at **800-727-9540**, 7:30 a.m. to 4:00 p.m. ET, or e-mail: nass@nass.usda.gov.

The U.S. Department of Agriculture (USDA) prohibits discrimination in all its programs and activities on the basis of race, color, national origin, age, disability, and where applicable, sex, marital status, familial status, parental status, religion, sexual orientation, genetic information, political beliefs, reprisal, or because all or a part of an individual's income is derived from any public assistance program. (Not all prohibited bases apply to all programs.) Persons with disabilities who require alternative means for communication of program information (Braille, large print, audiotape, etc.) should contact USDA's TARGET Center at (202) 720-2600 (voice and TDD).

To file a complaint of discrimination, write to USDA, Director, Office of Civil Rights, 1400 Independence Avenue, S.W., Washington, D.C. 20250-9410, or call (800) 795-3272 (voice) or (202) 720-6382 (TDD). USDA is an equal opportunity provider and employer.