



Cattle on Feed

Released March 19, 2010, by the National Agricultural Statistics Service (NASS), Agricultural Statistics Board, U.S. Department of Agriculture. For information on *Cattle on Feed* call Jason Hardegree at (202) 720-3040, office hours 7:30 a.m. to 4:00 p.m. ET.

U.S. Cattle on Feed Down 3 Percent

Cattle and calves on feed for slaughter market in the United States for feedlots with capacity of 1,000 or more head totaled 10.9 million head on March 1, 2010. The inventory was 3 percent below March 1, 2009.

Placements in feedlots during February totaled 1.67 million, 1 percent below 2009. Net placements were 1.60 million head. During February, placements of cattle and calves weighing less than 600 pounds were 320,000, 600-699 pounds were 365,000, 700-799 pounds were 520,000, and 800 pounds and greater were 460,000.

Marketings of fed cattle during February totaled 1.72 million, 2 percent above 2009.

Other disappearance totaled 68,000 during February, 21 percent above 2009.

**Cattle on Feed: Number on Feed, Placements, Marketings, and
Other Disappearance, 1,000+ Capacity Feedlots,
United States, March 1, 2009-2010**

Item	Number		Percent of Previous Year
	2009	2010	
	<i>1,000 Head</i>	<i>1,000 Head</i>	<i>Percent</i>
On Feed Feb 1	11,288	*10,984	97
Placed on Feed During Feb	1,678	1,665	99
Fed Cattle Marketed During Feb	1,682	1,717	102
Other Disappearance During Feb	56	68	121
On Feed Mar 1	11,228	10,864	97

* Revised.

**Cattle on Feed: Number on Feed, Placements, Marketings, and
Other Disappearance, 1,000+ Capacity Feedlots,
United States, February 1, 2009-2010**

Item	Number		Percent of Previous Year
	2009	2010	
	<i>1,000 Head</i>	<i>1,000 Head</i>	<i>Percent</i>
On Feed Jan 1	11,234	11,008	98
Placed on Feed During Jan	1,858	*1,822	98
Fed Cattle Marketed During Jan	1,737	*1,776	102
Other Disappearance During Jan	67	70	104
On Feed Feb 1	11,288	*10,984	97

* Revised.

**Cattle on Feed: Number on Feed, 1,000+ Capacity Feedlots,
by Month, State, and United States 2009-2010**

State	Mar 1, 2009	Feb 1, 2010	Mar 1, 2010		
			Number	Percent of Previous Year	Percent of Previous Month
	<i>1,000 Head</i>	<i>1,000 Head</i>	<i>1,000 Head</i>	<i>Percent</i>	<i>Percent</i>
AZ	342	290	286	84	99
CA	460	455	450	98	99
CO	1,040	960	940	90	98
ID	215	*200	195	91	98
IA	520	600	600	115	100
KS	2,290	2,240	2,220	97	99
NE	2,330	2,370	2,350	101	99
NM	148	(D)	(D)	(D)	(D)
OK	330	365	355	108	97
SD	225	235	240	107	102
TX	2,820	2,700	2,650	94	98
WA	153	166	168	110	101
Oth Sts ¹	355	403	410	(X)	102
US	11,228	*10,984	10,864	97	99

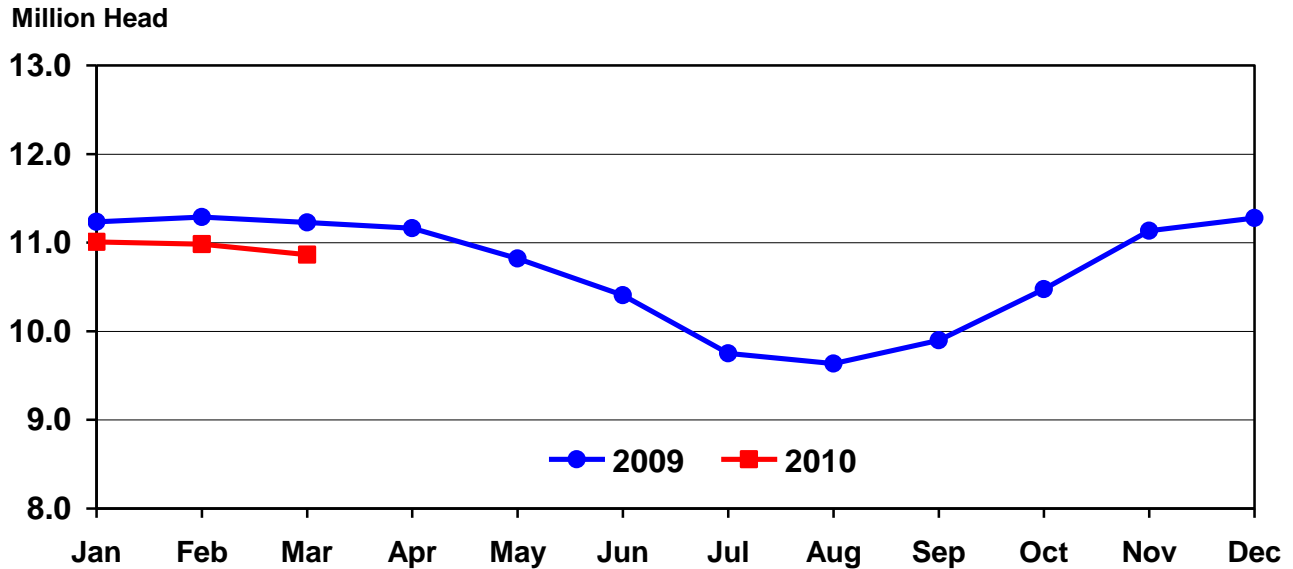
* Revised.

(D) Withheld to avoid disclosing data for individual operations.

(X) Comparison to 2009 is not applicable.

¹ Beginning in July 2009, New Mexico is included in the Other State total.

United States Cattle on Feed 1,000+ Capacity Feedlots



**Cattle on Feed: Number Placed on Feed, 1,000+ Capacity Feedlots,
by Month, State, and United States 2009-2010**

State	During Feb 2009	During Jan 2010	During Feb 2010		
			Number	Percent of Previous Year	Percent of Previous Month
	<i>1,000 Head</i>	<i>1,000 Head</i>	<i>1,000 Head</i>	<i>Percent</i>	<i>Percent</i>
AZ	26	28	21	81	75
CA	36	54	51	142	94
CO	190	130	160	84	123
ID	38	*27	36	95	133
IA	62	95	69	111	73
KS	420	475	405	96	85
NE	310	410	365	118	89
NM	9	(D)	(D)	(D)	(D)
OK	51	60	54	106	90
SD	43	35	52	121	149
TX	430	420	365	85	87
WA	28	29	30	107	103
Oth Sts ¹	35	59	57	(X)	97
US	1,678	*1,822	1,665	99	91

* Revised.

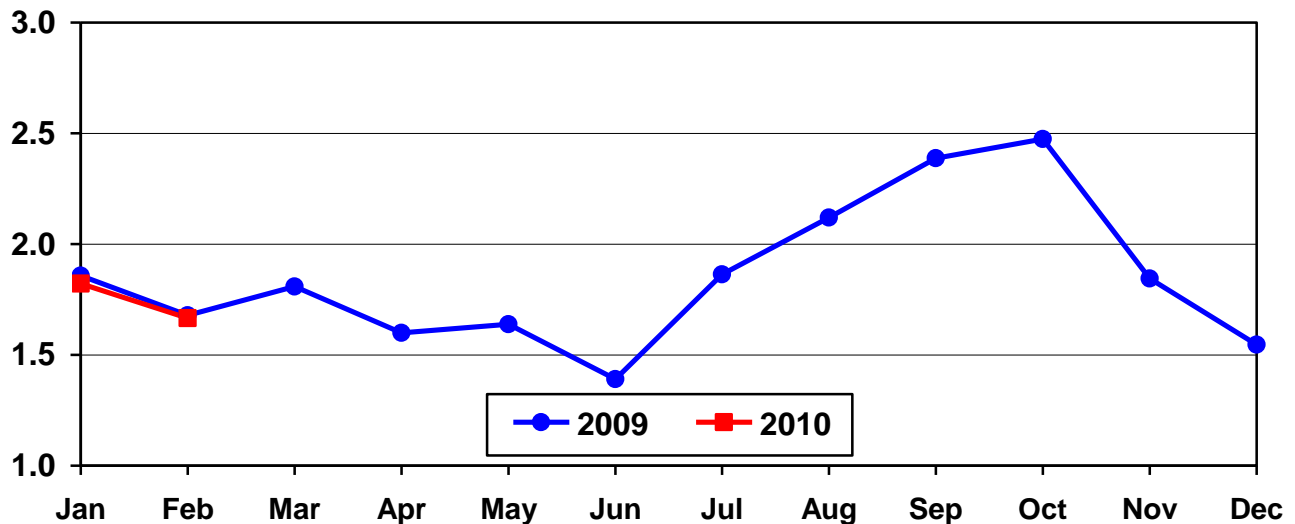
(D) Withheld to avoid disclosing data for individual operations.

(X) Comparison to 2009 is not applicable.

¹ Beginning in July 2009, New Mexico is included in the Other State total.

United States Cattle on Feed 1,000+ Capacity Feedlots Number Placed

Million Head



**Cattle on Feed: Number Placed on Feed by Weight Group, 1,000+ Capacity
Feedlots, by Month, State, and United States, 2009-2010**

State	During February									
	Under 600		600-699		700-799		800 Plus		Total	
	2009	2010	2009	2010	2009	2010	2009	2010	2009	2010
	<i>1,000 Head</i>	<i>1,000 Head</i>	<i>1,000 Head</i>	<i>1,000 Head</i>	<i>1,000 Head</i>	<i>1,000 Head</i>	<i>1,000 Head</i>	<i>1,000 Head</i>	<i>1,000 Head</i>	<i>1,000 Head</i>
CO	20	15	45	35	55	50	70	60	190	160
KS	50	50	95	90	165	150	110	115	420	405
NE	50	55	60	80	100	110	100	120	310	365
TX	100	105	115	95	140	110	75	55	430	365
Oth Sts	100	95	70	65	78	100	80	110	328	370
US	320	320	385	365	538	520	435	460	1,678	1,665
	During January									
	Under 600		600-699		700-799		800 Plus		Total	
	2009	2010	2009	2010	2009	2010	2009	2010	2009	2010
	<i>1,000 Head</i>	<i>1,000 Head</i>	<i>1,000 Head</i>	<i>1,000 Head</i>	<i>1,000 Head</i>	<i>1,000 Head</i>	<i>1,000 Head</i>	<i>1,000 Head</i>	<i>1,000 Head</i>	<i>1,000 Head</i>
CO	20	20	55	25	55	45	70	40	200	130
KS	60	60	130	125	160	190	85	100	435	475
NE	65	70	95	110	130	120	110	110	400	410
TX	105	135	135	100	135	115	65	70	440	420
Oth Sts	130	*110	90	85	73	*92	90	100	383	*387
US	380	*395	505	445	553	*562	420	420	1,858	*1,822

* Revised.

**Cattle on Feed: Number Marketed, 1,000+ Capacity Feedlots,
by Month, State, and United States 2009-2010**

State	During Feb 2009	During Jan 2010	During Feb 2010		
			Number	Percent of Previous Year	Percent of Previous Month
	<i>1,000 Head</i>	<i>1,000 Head</i>	<i>1,000 Head</i>	<i>Percent</i>	<i>Percent</i>
AZ	32	24	24	75	100
CA	54	57	48	89	84
CO	165	170	175	106	103
ID	37	*41	40	108	98
IA	61	62	66	108	106
KS	375	475	415	111	87
NE	370	380	370	100	97
NM	18	(D)	(D)	(D)	(D)
OK	49	58	62	127	107
SD	39	34	44	113	129
TX	410	390	400	98	103
WA	25	28	27	108	96
Oth Sts ¹	47	57	46	(X)	81
US	1,682	*1,776	1,717	102	97

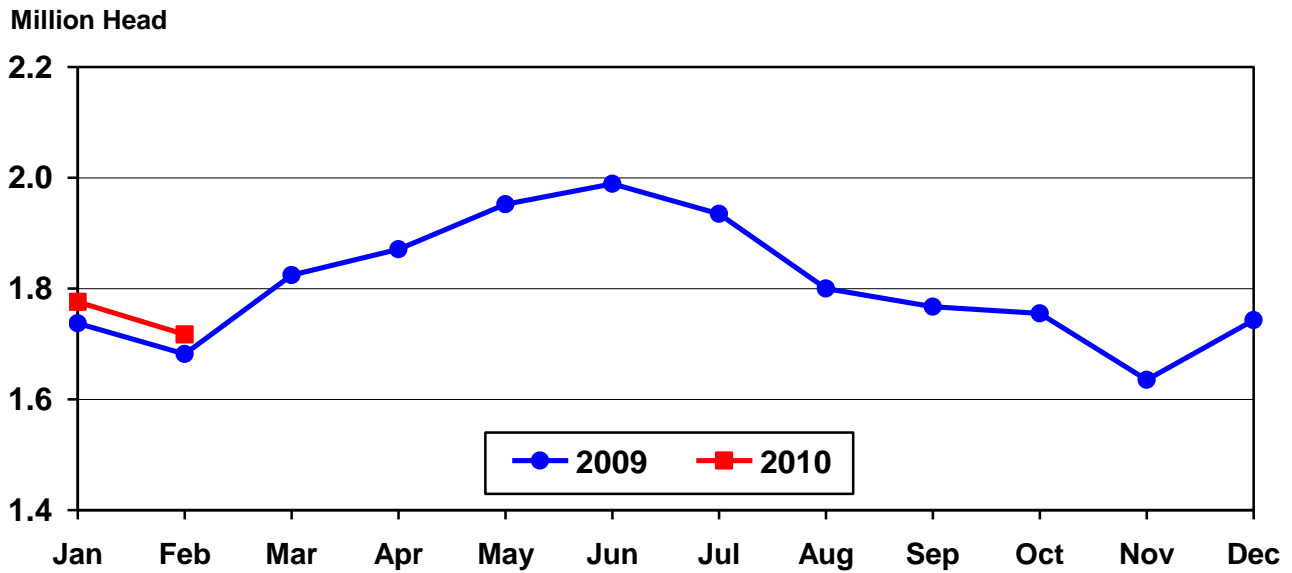
* Revised.

(D) Withheld to avoid disclosing data for individual operations.

(X) Comparison to 2009 is not applicable.

¹ Beginning in July 2009, New Mexico is included in the Other State total.

United States Cattle on Feed 1,000+ Capacity Feedlots Number Marketed



**Cattle on Feed: Other Disappearance, 1,000+ Capacity Feedlots,
by Month, State, and United States 2009-2010**

State	During Feb 2009	During Jan 2010	During Feb 2010		
			Number	Percent of Previous Year	Percent of Previous Month
	<i>1,000 Head</i>	<i>1,000 Head</i>	<i>1,000 Head</i>	<i>Percent</i>	<i>Percent</i>
AZ	1	1	1	100	100
CA	2	7	8	400	114
CO	5	10	5	100	50
ID	1	1	1	100	100
IA	1	3	3	300	100
KS	15	10	10	67	100
NE	10	20	15	150	75
NM	1	(D)	(D)	(D)	(D)
OK	2	2	2	100	100
SD	4	1	3	75	300
TX	10	10	15	150	150
WA	1	1	1	100	100
Oth Sts ¹	3	4	4	(X)	100
US	56	70	68	121	97

(D) Withheld to avoid disclosing data for individual operations.

(X) Comparison to 2009 is not applicable.

¹ Beginning in July 2009, New Mexico is included in the Other State total.

Terms and Definitions of Cattle on Feed Estimates

Cattle on feed are animals being fed a ration of grain, silage, hay and/or protein supplement for slaughter market that are expected to produce a carcass that will grade select or better. It excludes cattle being "backgrounded only" for later sale as feeders or later placement in another feedlot.

Placements are cattle put into a feedlot, fed a ration which will produce a carcass that will grade select or better, and are intended for the slaughter market.

Marketings are cattle shipped out of feedlots to a slaughter market.

Other disappearance includes death loss, movement from feedlots to pasture, and shipments to other feedlots for further feeding.

Reliability of Cattle on Feed Estimates

Survey Procedures: During January and July all known feedlots in the U.S. with capacity of 1,000 or more head are surveyed to provide data for cattle on feed estimates. During the other months, all known feedlots from 16 States are surveyed. The 16 States account for 98 percent of the cattle on feed in feedlots with capacity of 1,000 or more head.

Estimating Procedures: These cattle on feed estimates were prepared by the Agricultural Statistics Board after reviewing recommendations and analysis submitted by each State office. Regional and State survey data were reviewed for reasonableness with each other and with estimates from the previous month when setting the current estimates.

Revision Policy: Revisions to previous estimates are made to improve month to month relationships. Estimates for the previous month are subject to revision in all States each month when current estimates are made. In February, all monthly estimates for the previous year, and the number of feedlots and annual marketings from two years ago are reviewed and subject to revisions. The reviews are primarily based on slaughter data, state check-off or brand data, and any other data that may have been received after the original estimate was made. Estimates will also be reviewed after data from the Census of Agriculture are available. No revisions will be made after that date and estimates become final.

Reliability: Since all 1,000+ capacity cattle on feed operators in every State are not included in the monthly survey, survey estimates are subject to sampling variability. Survey results are also subject to non-sampling errors such as omissions, duplications, and mistakes in reporting, recording, and processing the data. The effects of these errors cannot be measured directly. They are minimized through rigid quality controls in the data collection process and through a careful review of all reported data for consistency and reasonableness.

To assist users in evaluating the reliability of estimates in this report, the "**Root Mean Square Error**" is shown for selected items in the following table. The "Root Mean Square Error" is a statistical measure based on past performance and is computed using the differences between first and latest estimates. The "Root Mean Square Error" for cattle on feed inventory estimates over the past 24 months is 0.05 percent. This means that chances are 2 out of 3 that the final estimate will not be above or below the current estimate of 10.9 million head by more than 0.05 percent. Chances are 9 out of 10 that the difference will not exceed 0.08 percent.

The following table also shows a 24 month record of the range of differences between first and latest estimates for selected items. Using estimates of number on feed as an example, changes between the first estimate and the latest estimate during the past 24 months have averaged 2,000 head, ranging from 0 to 18,000 head. During this period the initial estimate has been above the final estimate 4 times and has been below the final estimate 4 times. This does not imply that the initial estimate is likely to understate or overstate final inventory.

Reliability of Monthly Cattle on Feed Estimates ¹

Item	Root Mean Square Error	90% Confidence Level		Difference Between First and Final Estimates			Number of Months	
		Percent	(000) Head	Average	Smallest	Largest	First Above Final	First Below Final
	<i>Percent</i>	<i>Percent</i>	<i>1,000 Head</i>	<i>1,000 Head</i>	<i>1,000 Head</i>	<i>1,000 Head</i>	<i>Number</i>	<i>Number</i>
Number on Feed	0.05	0.08	8.7	2	0	18	4	4
Placements	0.15	0.25	4.2	1	0	9	3	5
Marketings	0.30	0.51	8.8	2	0	21	3	6

¹ Based on data for the past 24 months.

Information Contacts

Listed below are the commodity specialists in the Livestock Branch of the National Agricultural Statistics Service to contact for additional information.

Dan Kerestes, Chief, Livestock Branch (202) 720-3570

Livestock Section

Scott Hollis, Head, Livestock Section (202) 690-2424

Jim Collom - Dairy Products (202) 690-3236

Joe Gaynor - Dairy Products Prices (202) 690-2168

Jason Hardegree - Cattle, Cattle on Feed (202) 720-3040

Sherry Bertramsen - Livestock Slaughter (515) 284-4340

Everett Olbert - Sheep and Goats (202) 720-4751

Mike Miller - Milk Production and Milk Cows (202) 720-3278

Nick Streff - Hogs and Pigs (202) 720-3106

ACCESS TO REPORTS!!

For your convenience, there are several ways to obtain NASS reports, data products, and services:

INTERNET ACCESS

All NASS reports are available free of charge. For free access, connect to the Internet and go to the NASS Home Page at: www.nass.usda.gov.

E-MAIL SUBSCRIPTION

All NASS reports are available by subscription free of charge direct to your e-mail address. Starting with the NASS Home Page at www.nass.usda.gov, under the right navigation, *Receive reports by Email*, click on **National** or **State**. Follow the instructions on the screen.

PRINTED REPORTS OR DATA PRODUCTS

CALL OUR TOLL-FREE ORDER DESK: 800-999-6779 (U.S. and Canada)
Other areas, please call 703-605-6220 FAX: 703-605-6880
(Visa, MasterCard, check, or money order acceptable for payment.)

ASSISTANCE

For **assistance** with general agricultural statistics or further information about NASS or its products or services, contact the **Agricultural Statistics Hotline** at **800-727-9540**, 7:30 a.m. to 4:00 p.m. ET, or e-mail: nass@nass.usda.gov.

The U.S. Department of Agriculture (USDA) prohibits discrimination in all its programs and activities on the basis of race, color, national origin, age, disability, and where applicable, sex, marital status, familial status, parental status, religion, sexual orientation, genetic information, political beliefs, reprisal, or because all or a part of an individual's income is derived from any public assistance program. (Not all prohibited bases apply to all programs.) Persons with disabilities who require alternative means for communication of program information (Braille, large print, audiotape, etc.) should contact USDA's TARGET Center at (202) 720-2600 (voice and TDD).

To file a complaint of discrimination, write to USDA, Director, Office of Civil Rights, 1400 Independence Avenue, S.W., Washington, D.C. 20250-9410, or call (800) 795-3272 (voice) or (202) 720-6382 (TDD). USDA is an equal opportunity provider and employer.