



Cattle on Feed

Released April 23, 2010, by the National Agricultural Statistics Service (NASS), Agricultural Statistics Board, U.S. Department of Agriculture. For information on *Cattle on Feed* call Jason Hardegee at (202) 720-3040, office hours 7:30 a.m. to 4:00 p.m. ET.

U.S. Cattle on Feed Down 4 Percent

Cattle and calves on feed for slaughter market in the United States for feedlots with capacity of 1,000 or more head totaled 10.8 million head on April 1, 2010. The inventory was 4 percent below April 1, 2009. The inventory included 6.71 million steers and steer calves, down 4 percent from the previous year. This group accounted for 62 percent of the total inventory. Heifers and heifer calves accounted for 4.02 million head, down 3 percent from 2009.

Placements in feedlots during March totaled 1.86 million, 3 percent above 2009. Net placements were 1.80 million head. During March, placements of cattle and calves weighing less than 600 pounds were 395,000, 600-699 pounds were 375,000, 700-799 pounds were 602,000, and 800 pounds and greater were 485,000.

Marketings of fed cattle during March totaled 1.90 million, 4 percent above 2009.

Other disappearance totaled 60,000 during March, 20 percent above 2009. This is the second lowest other disappearance for the month of March since the series began in 1996.

**Cattle on Feed: Number on Feed, Placements, Marketings, and
Other Disappearance, 1,000+ Capacity Feedlots,
United States, April 1, 2009-2010**

Item	Number		Percent of Previous Year
	2009	2010	
	<i>1,000 Head</i>	<i>1,000 Head</i>	<i>Percent</i>
On Feed Mar 1	11,228	*10,874	97
Placed on Feed During Mar	1,808	1,857	103
Fed Cattle Marketed During Mar	1,824	1,902	104
Other Disappearance During Mar	50	60	120
On Feed Apr 1	11,162	10,769	96

* Revised.

**Cattle on Feed: Number on Feed, Placements, Marketings, and
Other Disappearance, 1,000+ Capacity Feedlots,
United States, March 1, 2009-2010**

Item	Number		Percent of Previous Year
	2009	2010	
	<i>1,000 Head</i>	<i>1,000 Head</i>	<i>Percent</i>
On Feed Feb 1	11,288	10,984	97
Placed on Feed During Feb	1,678	*1,674	100
Fed Cattle Marketed During Feb	1,682	*1,716	102
Other Disappearance During Feb	56	68	121
On Feed Mar 1	11,228	*10,874	97

* Revised.

**Cattle on Feed: Number on Feed by Class, 1,000+ Capacity Feedlots,
United States, April 1, 2009-2010**

Item	Number		Percent of Previous Year
	2009	2010	
	<i>1,000 Head</i>	<i>1,000 Head</i>	<i>Percent</i>
Class on Feed Apr 1			
Steers and Steer Calves	6,984	6,707	96
Heifers and Heifer Calves	4,127	4,021	97
Cows and Bulls	51	41	80

**Cattle on Feed: Number on Feed, 1,000+ Capacity Feedlots,
by Month, State, and United States 2009-2010**

State	Apr 1, 2009	Mar 1, 2010	Apr 1, 2010		
			Number	Percent of Previous Year	Percent of Previous Month
	<i>1,000 Head</i>	<i>1,000 Head</i>	<i>1,000 Head</i>	<i>Percent</i>	<i>Percent</i>
AZ	330	286	278	84	97
CA	445	450	440	99	98
CO	1,040	940	930	89	99
ID	210	195	205	98	105
IA	530	*610	600	113	98
KS	2,280	2,220	2,240	98	101
NE	2,320	2,350	2,290	99	97
NM	137	(D)	(D)	(D)	(D)
OK	330	355	340	103	96
SD	225	240	235	104	98
TX	2,810	2,650	2,640	94	100
WA	160	168	171	107	102
Oth Sts ¹	345	410	400	(X)	98
US	11,162	*10,874	10,769	96	99

* Revised.

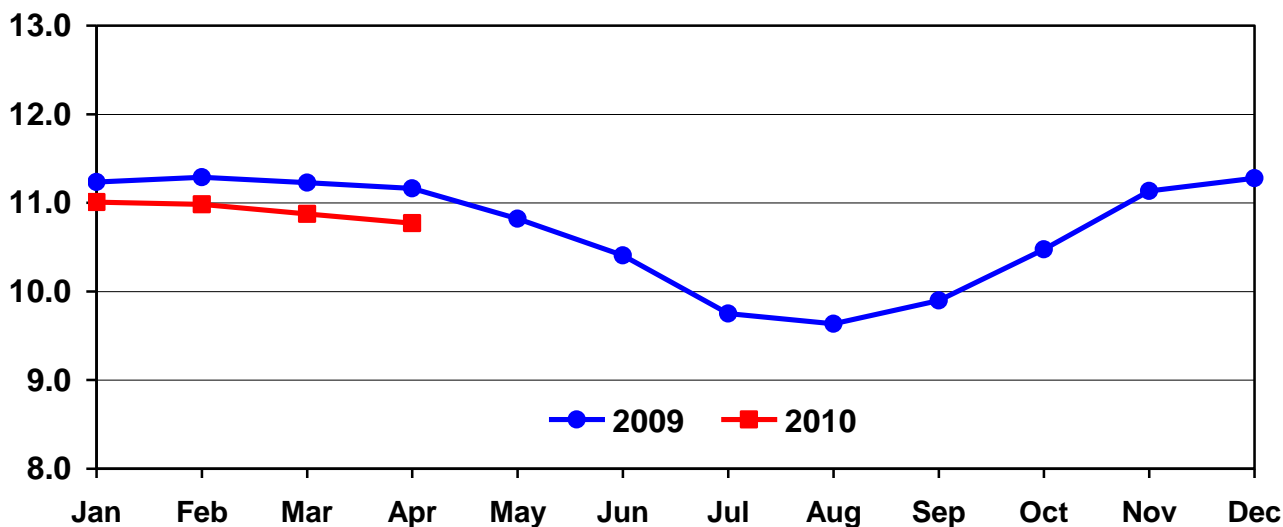
(D) Withheld to avoid disclosing data for individual operations.

(X) Comparison to 2009 is not applicable.

¹ Beginning in July 2009, New Mexico is included in the Other State total.

United States Cattle on Feed 1,000+ Capacity Feedlots

Million Head



**Cattle on Feed: Number Placed on Feed, 1,000+ Capacity Feedlots,
by Month, State, and United States 2009-2010**

State	During Mar 2009	During Feb 2010	During Mar 2010		
			Number	Percent of Previous Year	Percent of Previous Month
	<i>1,000 Head</i>	<i>1,000 Head</i>	<i>1,000 Head</i>	<i>Percent</i>	<i>Percent</i>
AZ	24	21	20	83	95
CA	48	51	47	98	92
CO	165	160	185	112	116
ID	26	36	34	131	94
IA	77	*78	77	100	99
KS	395	405	440	111	109
NE	360	365	380	106	104
NM	10	(D)	(D)	(D)	(D)
OK	68	54	64	94	119
SD	46	52	42	91	81
TX	510	365	490	96	134
WA	35	30	32	91	107
Oth Sts ¹	44	57	46	(X)	81
US	1,808	*1,674	1,857	103	111

* Revised.

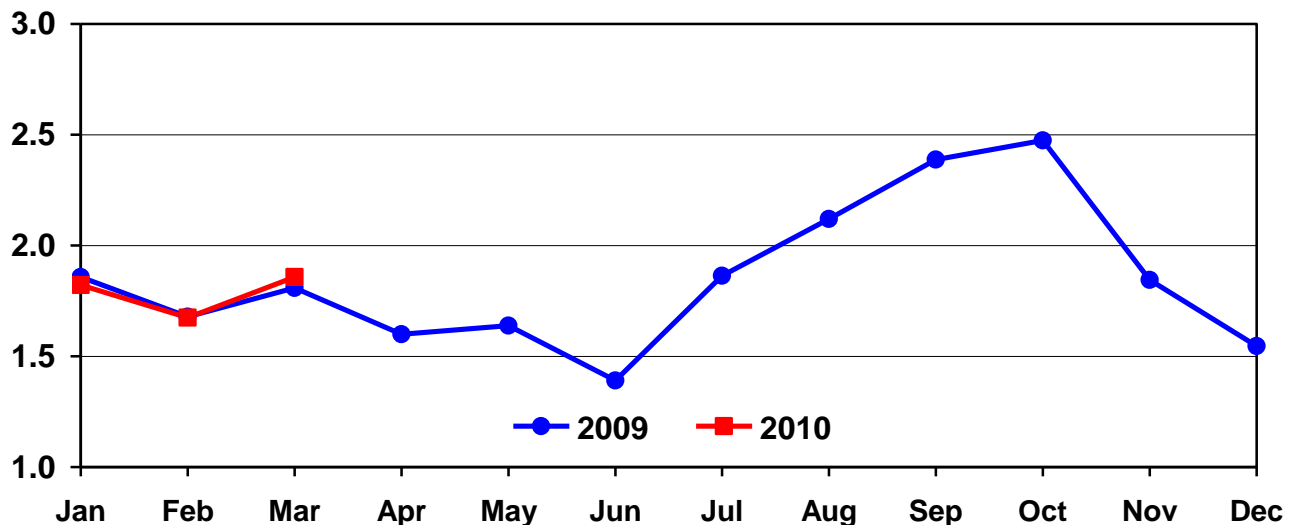
(D) Withheld to avoid disclosing data for individual operations.

(X) Comparison to 2009 is not applicable.

¹ Beginning in July 2009, New Mexico is included in the Other State total.

United States Cattle on Feed 1,000+ Capacity Feedlots Number Placed

Million Head



**Cattle on Feed: Number Placed on Feed by Weight Group, 1,000+ Capacity
Feedlots, by Month, State, and United States, 2009-2010**

State	During March									
	Under 600		600-699		700-799		800 Plus		Total	
	2009	2010	2009	2010	2009	2010	2009	2010	2009	2010
	<i>1,000 Head</i>	<i>1,000 Head</i>	<i>1,000 Head</i>	<i>1,000 Head</i>	<i>1,000 Head</i>	<i>1,000 Head</i>	<i>1,000 Head</i>	<i>1,000 Head</i>	<i>1,000 Head</i>	<i>1,000 Head</i>
CO	20	30	25	40	55	70	65	45	165	185
KS	45	70	85	90	135	165	130	115	395	440
NE	40	60	60	70	110	120	150	130	360	380
TX	90	145	110	125	200	150	110	70	510	490
Oth Sts	110	90	60	50	93	97	115	125	378	362
US	305	395	340	375	593	602	570	485	1,808	1,857
	During February									
	Under 600		600-699		700-799		800 Plus		Total	
	2009	2010	2009	2010	2009	2010	2009	2010	2009	2010
	<i>1,000 Head</i>	<i>1,000 Head</i>	<i>1,000 Head</i>	<i>1,000 Head</i>	<i>1,000 Head</i>	<i>1,000 Head</i>	<i>1,000 Head</i>	<i>1,000 Head</i>	<i>1,000 Head</i>	<i>1,000 Head</i>
CO	20	15	45	35	55	50	70	60	190	160
KS	50	50	95	90	165	150	110	115	420	405
NE	50	55	60	80	100	110	100	120	310	365
TX	100	105	115	95	140	110	75	55	430	365
Oth Sts	100	95	70	*70	78	*99	80	*115	328	*379
US	320	320	385	*370	538	*519	435	*465	1,678	*1,674

* Revised.

**Cattle on Feed: Number Marketed, 1,000+ Capacity Feedlots,
by Month, State, and United States 2009-2010**

State	During Mar 2009	During Feb 2010	During Mar 2010		
			Number	Percent of Previous Year	Percent of Previous Month
	<i>1,000 Head</i>	<i>1,000 Head</i>	<i>1,000 Head</i>	<i>Percent</i>	<i>Percent</i>
AZ	35	24	27	77	113
CA	60	48	51	85	106
CO	155	175	190	123	109
ID	30	40	23	77	58
IA	66	*65	84	127	129
KS	395	415	410	104	99
NE	365	370	430	118	116
NM	19	(D)	(D)	(D)	(D)
OK	66	62	77	117	124
SD	44	44	45	102	102
TX	510	400	485	95	121
WA	27	27	28	104	104
Oth Sts ¹	52	46	52	(X)	113
US	1,824	*1,716	1,902	104	111

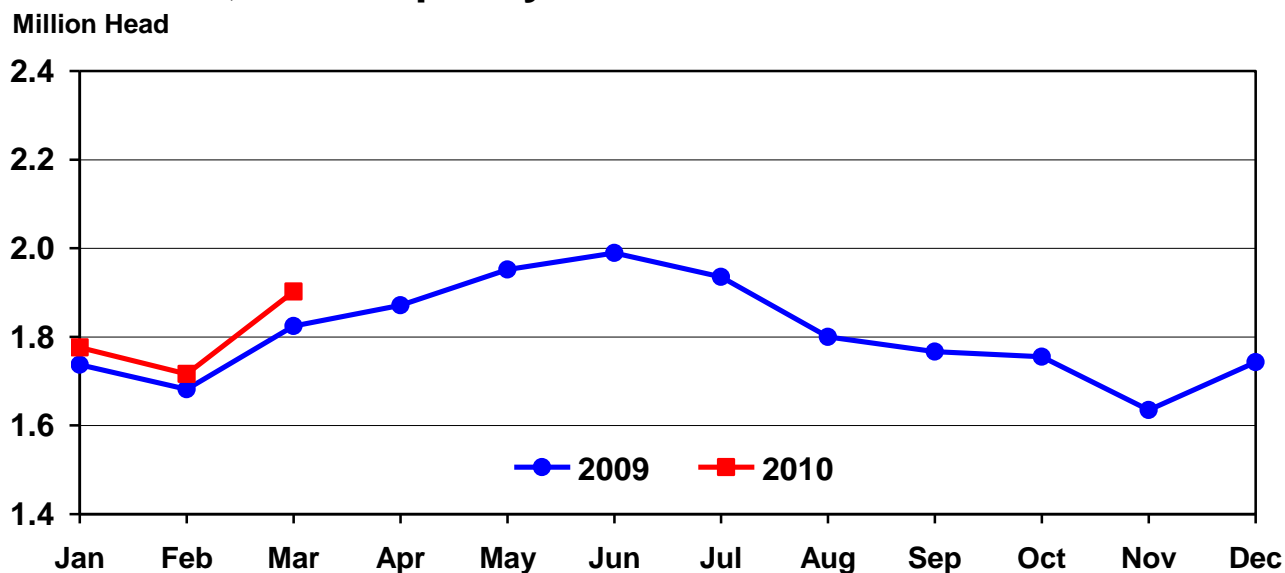
* Revised.

(D) Withheld to avoid disclosing data for individual operations.

(X) Comparison to 2009 is not applicable.

¹ Beginning in July 2009, New Mexico is included in the Other State total.

United States Cattle on Feed 1,000+ Capacity Feedlots Number Marketed



**Cattle on Feed: Other Disappearance, 1,000+ Capacity Feedlots,
by Month, State, and United States 2009-2010**

State	During Mar 2009	During Feb 2010	During Mar 2010		
			Number	Percent of Previous Year	Percent of Previous Month
	<i>1,000 Head</i>	<i>1,000 Head</i>	<i>1,000 Head</i>	<i>Percent</i>	<i>Percent</i>
AZ	1	1	1	100	100
CA	3	8	6	200	75
CO	10	5	5	50	100
ID	1	1	1	100	100
IA	1	3	3	300	100
KS	10	10	10	100	100
NE	5	15	10	200	67
NM	2	(D)	(D)	(D)	(D)
OK	2	2	2	100	100
SD	2	3	2	100	67
TX	10	15	15	150	100
WA	1	1	1	100	100
Oth Sts ¹	2	4	4	(X)	100
US	50	68	60	120	88

(D) Withheld to avoid disclosing data for individual operations.

(X) Comparison to 2009 is not applicable.

¹ Beginning in July 2009, New Mexico is included in the Other State total.

**Cattle on Feed: Number on Feed by Class, 1,000+ Capacity Feedlots,
by Quarter, State, and United States, 2009-2010**

State	Steers & Steer Calves			Heifers & Heifer Calves			Cows and Bulls		
	Apr 1, 2009	Jan 1, 2010	Apr 1, 2010	Apr 1, 2009	Jan 1, 2010	Apr 1, 2010	Apr 1, 2009	Jan 1, 2010	Apr 1, 2010
	<i>1,000 Head</i>	<i>1,000 Head</i>	<i>1,000 Head</i>	<i>1,000 Head</i>	<i>1,000 Head</i>	<i>1,000 Head</i>	<i>1,000 Head</i>	<i>1,000 Head</i>	<i>1,000 Head</i>
AZ	329	285	275	1	2	3	0	0	0
CA	400	410	360	45	53	80	0	2	0
CO	670	650	630	365	355	295	5	5	5
ID	103	120	122	97	90	82	10	5	1
IA	380	380	420	150	190	180	0	0	0
KS	1,190	1,250	1,190	1,085	990	1,045	5	10	5
NE	1,400	1,440	1,410	910	910	870	10	10	10
NM	72	(D)	(D)	65	(D)	(D)	0	(D)	(D)
OK	190	220	190	140	145	150	0	0	0
SD	125	115	125	85	92	93	15	28	17
TX	1,780	1,650	1,610	1,028	1,029	1,029	2	1	1
WA	90	94	101	69	71	69	1	1	1
Oth Sts ¹	255	263	274	87	141	125	3	1	1
US	6,984	6,877	6,707	4,127	4,068	4,021	51	63	41

(D) Withheld to avoid disclosing data for individual operations.

¹ Beginning in July 2009, New Mexico is included in the Other State total.

Terms and Definitions of Cattle on Feed Estimates

Cattle on feed are animals being fed a ration of grain, silage, hay and/or protein supplement for slaughter market that are expected to produce a carcass that will grade select or better. It excludes cattle being "backgrounded only" for later sale as feeders or later placement in another feedlot.

Placements are cattle put into a feedlot, fed a ration which will produce a carcass that will grade select or better, and are intended for the slaughter market.

Marketings are cattle shipped out of feedlots to a slaughter market.

Other disappearance includes death loss, movement from feedlots to pasture, and shipments to other feedlots for further feeding.

Reliability of Cattle on Feed Estimates

Survey Procedures: During January and July all known feedlots in the U.S. with capacity of 1,000 or more head are surveyed to provide data for cattle on feed estimates. During the other months, all known feedlots from 16 States are surveyed. The 16 States account for 98 percent of the cattle on feed in feedlots with capacity of 1,000 or more head.

Estimating Procedures: These cattle on feed estimates were prepared by the Agricultural Statistics Board after reviewing recommendations and analysis submitted by each State office. Regional and State survey data were reviewed for reasonableness with each other and with estimates from the previous month when setting the current estimates.

Revision Policy: Revisions to previous estimates are made to improve month to month relationships. Estimates for the previous month are subject to revision in all States each month when current estimates are made. In February, all monthly estimates for the previous year, and the number of feedlots and annual marketings from two years ago are reviewed and subject to revisions. The reviews are primarily based on slaughter data, state check-off or brand data, and any other data that may have been received after the original estimate was made. Estimates will also be reviewed after data from the Census of Agriculture are available. No revisions will be made after that date and estimates become final.

Reliability: Since all 1,000+ capacity cattle on feed operators in every State are not included in the monthly survey, survey estimates are subject to sampling variability. Survey results are also subject to non-sampling errors such as omissions, duplications, and mistakes in reporting, recording, and processing the data. The effects of these errors cannot be measured directly. They are minimized through rigid quality controls in the data collection process and through a careful review of all reported data for consistency and reasonableness.

To assist users in evaluating the reliability of estimates in this report, the "**Root Mean Square Error**" is shown for selected items in the following table. The "Root Mean Square Error" is a statistical measure based on past performance and is computed using the differences between first and latest estimates. The "Root Mean Square Error" for cattle on feed inventory estimates over the past 24 months is 0.05 percent. This means that chances are 2 out of 3 that the final estimate will not be above or below the current estimate of 10.8 million head by more than 0.05 percent. Chances are 9 out of 10 that the difference will not exceed 0.10 percent.

The following table also shows a 24 month record of the range of differences between first and latest estimates for selected items. Using estimates of number on feed as an example, changes between the first estimate and the latest estimate during the past 24 months have averaged 2,000 head, ranging from 0 to 18,000 head. During this period the initial estimate has been above the final estimate 4 times and has been below the final estimate 5 times. This does not imply that the initial estimate is likely to understate or overstate final inventory.

Reliability of Monthly Cattle on Feed Estimates ¹

Item	Root Mean Square Error	90% Confidence Level		Difference Between First and Final Estimates			Number of Months	
		Percent	(000) Head	Average	Smallest	Largest	First Above Final	First Below Final
	<i>Percent</i>	<i>Percent</i>	<i>1,000 Head</i>	<i>1,000 Head</i>	<i>1,000 Head</i>	<i>1,000 Head</i>	<i>Number</i>	<i>Number</i>
Number on Feed	0.05	0.10	10.8	2	0	18	4	5
Placements	0.18	0.30	5.6	2	0	9	3	6
Marketings	0.30	0.50	9.5	3	0	21	4	6

¹ Based on data for the past 24 months.

Information Contacts

Listed below are the commodity specialists in the Livestock Branch of the National Agricultural Statistics Service to contact for additional information.

- Dan Kerestes, Chief, Livestock Branch (202) 720-3570
- Scott Hollis, Head, Livestock Section (202) 690-2424
 - Jim Collom – Dairy Products (202) 690-3236
 - Joe Gaynor – Dairy Products Prices (202) 690-2168
 - Jason Hardegree – Cattle, Cattle on Feed (202) 720-3040
 - Sherry Bertramsen – Livestock Slaughter (515) 284-4340
 - Everett Olbert – Sheep and Goats (202) 720-4751
 - Mike Miller – Milk Production and Milk Cows (202) 720-3278
 - Nick Streff – Hogs and Pigs (202) 720-3106

ACCESS TO REPORTS!!

For your convenience, there are several ways to obtain NASS reports, data products, and services:

INTERNET ACCESS

All NASS reports are available free of charge. For free access, connect to the Internet and go to the NASS Home Page at: www.nass.usda.gov.

E-MAIL SUBSCRIPTION

All NASS reports are available by subscription free of charge direct to your e-mail address. Starting with the NASS Home Page at www.nass.usda.gov, under the right navigation, *Receive reports by Email*, click on **National** or **State**. Follow the instructions on the screen.

PRINTED REPORTS OR DATA PRODUCTS

CALL OUR TOLL-FREE ORDER DESK: 800-999-6779 (U.S. and Canada)
Other areas, please call 703-605-6220 FAX: 703-605-6880
(Visa, MasterCard, check, or money order acceptable for payment.)

ASSISTANCE

For **assistance** with general agricultural statistics or further information about NASS or its products or services, contact the **Agricultural Statistics Hotline** at **800-727-9540**, 7:30 a.m. to 4:00 p.m. ET, or e-mail: nass@nass.usda.gov.

The U.S. Department of Agriculture (USDA) prohibits discrimination in all its programs and activities on the basis of race, color, national origin, age, disability, and where applicable, sex, marital status, familial status, parental status, religion, sexual orientation, genetic information, political beliefs, reprisal, or because all or a part of an individual's income is derived from any public assistance program. (Not all prohibited bases apply to all programs.) Persons with disabilities who require alternative means for communication of program information (Braille, large print, audiotape, etc.) should contact USDA's TARGET Center at (202) 720-2600 (voice and TDD).

To file a complaint of discrimination, write to USDA, Director, Office of Civil Rights, 1400 Independence Avenue, S.W., Washington, D.C. 20250-9410, or call (800) 795-3272 (voice) or (202) 720-6382 (TDD). USDA is an equal opportunity provider and employer.