



Cattle on Feed

Released May 21, 2010, by the National Agricultural Statistics Service (NASS), Agricultural Statistics Board, U.S. Department of Agriculture. For information on *Cattle on Feed* call Jason Hardegree at (202) 720-3040, office hours 7:30 a.m. to 4:00 p.m. ET.

U.S. Cattle on Feed Down 3 Percent

Cattle and calves on feed for slaughter market in the United States for feedlots with capacity of 1,000 or more head totaled 10.5 million head on May 1, 2010. The inventory was 3 percent below May 1, 2009.

Placements in feedlots during April totaled 1.63 million, 2 percent above 2009. Net placements were 1.54 million head. During April, placements of cattle and calves weighing less than 600 pounds were 365,000, 600-699 pounds were 300,000, 700-799 pounds were 469,000, and 800 pounds and greater were 495,000.

Marketings of fed cattle during April totaled 1.85 million, 1 percent below 2009.

Other disappearance totaled 89,000 during April, 29 percent above 2009.

**Cattle on Feed: Number on Feed, Placements, Marketings, and
Other Disappearance, 1,000+ Capacity Feedlots,
United States, May 1, 2009-2010**

Item	Number		Percent of Previous Year
	2009	2010	
	<i>1,000 Head</i>	<i>1,000 Head</i>	<i>Percent</i>
On Feed Apr 1	11,162	*10,767	96
Placed on Feed During Apr	1,600	1,629	102
Fed Cattle Marketed During Apr	1,871	1,854	99
Other Disappearance During Apr	69	89	129
On Feed May 1	10,822	10,453	97

* Revised.

**Cattle on Feed: Number on Feed, Placements, Marketings, and
Other Disappearance, 1,000+ Capacity Feedlots,
United States, April 1, 2009-2010**

Item	Number		Percent of Previous Year
	2009	2010	
	<i>1,000 Head</i>	<i>1,000 Head</i>	<i>Percent</i>
On Feed Mar 1	11,228	10,874	97
Placed on Feed During Mar	1,808	*1,856	103
Fed Cattle Marketed During Mar	1,824	*1,903	104
Other Disappearance During Mar	50	60	120
On Feed Apr 1	11,162	*10,767	96

* Revised.

**Cattle on Feed: Number on Feed, 1,000+ Capacity Feedlots,
by Month, State, and United States 2009-2010**

State	May 1, 2009	Apr 1, 2010	May 1, 2010		
			Number	Percent of Previous Year	Percent of Previous Month
	<i>1,000 Head</i>	<i>1,000 Head</i>	<i>1,000 Head</i>	<i>Percent</i>	<i>Percent</i>
AZ	311	278	268	86	96
CA	450	440	435	97	99
CO	1,010	930	940	93	101
ID	210	205	210	100	102
IA	540	600	600	111	100
KS	2,180	2,240	2,130	98	95
NE	2,270	2,290	2,240	99	98
NM	120	(D)	(D)	(D)	(D)
OK	315	340	325	103	96
SD	230	235	235	102	100
TX	2,680	2,640	2,510	94	95
WA	161	171	175	109	102
Oth Sts ¹	345	*398	385	(X)	97
US	10,822	*10,767	10,453	97	97

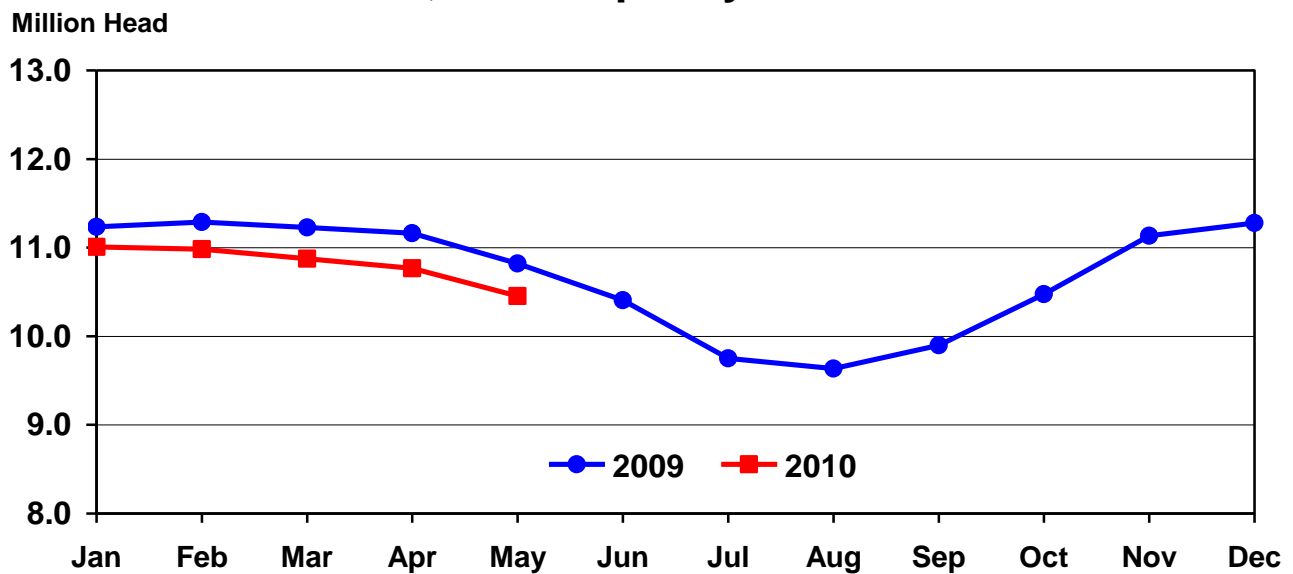
* Revised.

(D) Withheld to avoid disclosing data for individual operations.

(X) Comparison to 2009 is not applicable.

¹ Beginning in July 2009, New Mexico is included in the Other State total.

United States Cattle on Feed 1,000+ Capacity Feedlots



**Cattle on Feed: Number Placed on Feed, 1,000+ Capacity Feedlots,
by Month, State, and United States 2009-2010**

State	During Apr 2009	During Mar 2010	During Apr 2010		
			Number	Percent of Previous Year	Percent of Previous Month
	<i>1,000 Head</i>	<i>1,000 Head</i>	<i>1,000 Head</i>	<i>Percent</i>	<i>Percent</i>
AZ	21	20	16	76	80
CA	68	47	49	72	104
CO	150	185	170	113	92
ID	30	34	27	90	79
IA	79	77	76	96	99
KS	330	440	315	95	72
NE	350	380	400	114	105
NM	11	(D)	(D)	(D)	(D)
OK	52	64	57	110	89
SD	39	42	39	100	93
TX	395	490	400	101	82
WA	26	32	29	112	91
Oth Sts ¹	49	*45	51	(X)	113
US	1,600	*1,856	1,629	102	88

* Revised.

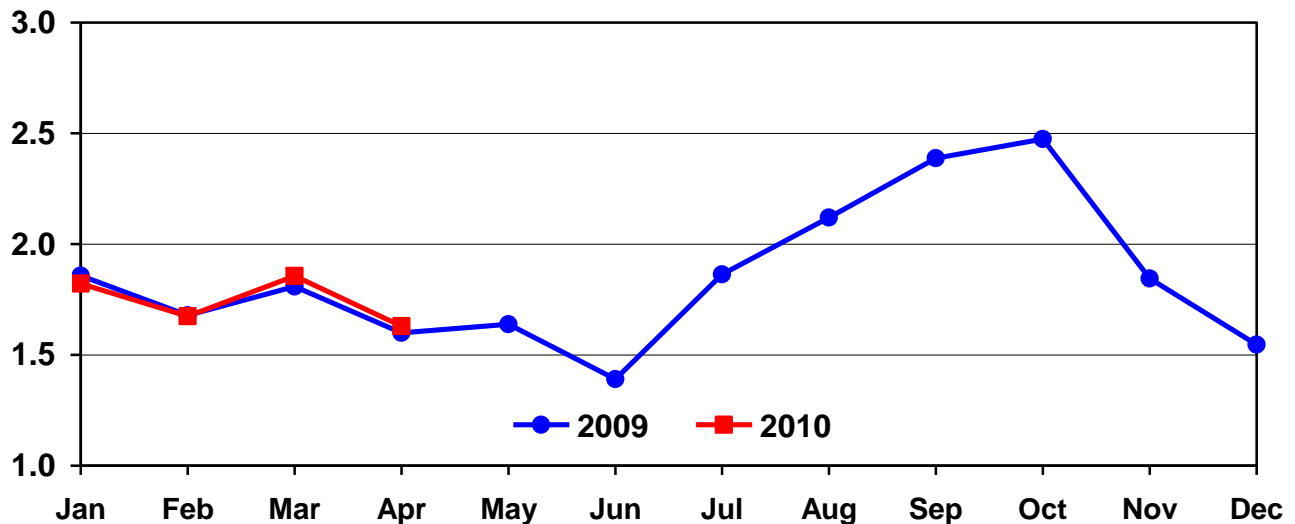
(D) Withheld to avoid disclosing data for individual operations.

(X) Comparison to 2009 is not applicable.

¹ Beginning in July 2009, New Mexico is included in the Other State total.

United States Cattle on Feed 1,000+ Capacity Feedlots Number Placed

Million Head



**Cattle on Feed: Number Placed on Feed by Weight Group, 1,000+ Capacity
Feedlots, by Month, State, and United States 2009-2010**

State	During April									
	Under 600		600-699		700-799		800 Plus		Total	
	2009	2010	2009	2010	2009	2010	2009	2010	2009	2010
	<i>1,000 Head</i>	<i>1,000 Head</i>	<i>1,000 Head</i>	<i>1,000 Head</i>	<i>1,000 Head</i>	<i>1,000 Head</i>	<i>1,000 Head</i>	<i>1,000 Head</i>	<i>1,000 Head</i>	<i>1,000 Head</i>
CO	20	30	30	35	40	45	60	60	150	170
KS	55	55	70	60	90	100	115	100	330	315
NE	55	70	65	70	90	120	140	140	350	400
TX	125	115	90	85	95	120	85	80	395	400
Oth Sts	100	95	60	50	90	84	125	115	375	344
US	355	365	315	300	405	469	525	495	1,600	1,629
	During March									
	Under 600		600-699		700-799		800 Plus		Total	
	2009	2010	2009	2010	2009	2010	2009	2010	2009	2010
	<i>1,000 Head</i>	<i>1,000 Head</i>	<i>1,000 Head</i>	<i>1,000 Head</i>	<i>1,000 Head</i>	<i>1,000 Head</i>	<i>1,000 Head</i>	<i>1,000 Head</i>	<i>1,000 Head</i>	<i>1,000 Head</i>
CO	20	30	25	40	55	70	65	45	165	185
KS	45	70	85	90	135	165	130	115	395	440
NE	40	60	60	70	110	120	150	130	360	380
TX	90	145	110	125	200	150	110	70	510	490
Oth Sts	110	90	60	50	93	*96	115	125	378	*361
US	305	395	340	375	593	*601	570	485	1,808	*1,856

* Revised.

**Cattle on Feed: Number Marketed, 1,000+ Capacity Feedlots,
by Month, State, and United States 2009-2010**

State	During Apr 2009	During Mar 2010	During Apr 2010		
			Number	Percent of Previous Year	Percent of Previous Month
	<i>1,000 Head</i>	<i>1,000 Head</i>	<i>1,000 Head</i>	<i>Percent</i>	<i>Percent</i>
AZ	38	27	24	63	89
CA	61	51	51	84	100
CO	165	190	145	88	76
ID	29	23	21	72	91
IA	68	84	72	106	86
KS	410	410	405	99	99
NE	395	430	435	110	101
NM	25	(D)	(D)	(D)	(D)
OK	66	77	70	106	91
SD	33	45	38	115	84
TX	510	485	510	100	105
WA	24	28	24	100	86
Oth Sts ¹	47	*53	59	(X)	111
US	1,871	*1,903	1,854	99	97

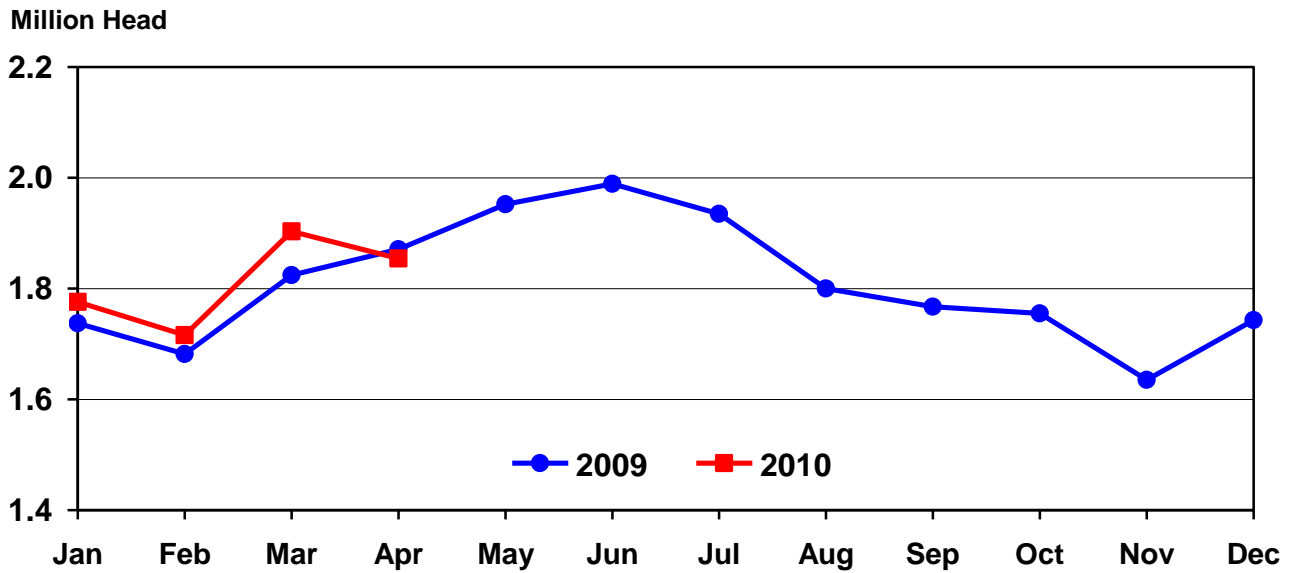
* Revised.

(D) Withheld to avoid disclosing data for individual operations.

(X) Comparison to 2009 is not applicable.

¹ Beginning in July 2009, New Mexico is included in the Other State total.

United States Cattle on Feed 1,000+ Capacity Feedlots Number Marketed



**Cattle on Feed: Other Disappearance, 1,000+ Capacity Feedlots,
by Month, State, and United States 2009-2010**

State	During Apr 2009	During Mar 2010	During Apr 2010		
			Number	Percent of Previous Year	Percent of Previous Month
	<i>1,000 Head</i>	<i>1,000 Head</i>	<i>1,000 Head</i>	<i>Percent</i>	<i>Percent</i>
AZ	2	1	2	100	200
CA	2	6	3	150	50
CO	15	5	15	100	300
ID	1	1	1	100	100
IA	1	3	4	400	133
KS	20	10	20	100	200
NE	5	10	15	300	150
NM	3	(D)	(D)	(D)	(D)
OK	1	2	2	200	100
SD	1	2	1	100	50
TX	15	15	20	133	133
WA	1	1	1	100	100
Oth Sts ¹	2	4	5	(X)	125
US	69	60	89	129	148

(D) Withheld to avoid disclosing data for individual operations.

(X) Comparison to 2009 is not applicable.

¹ Beginning in July 2009, New Mexico is included in the Other State total.

Terms and Definitions of Cattle on Feed Estimates

Cattle on feed are animals being fed a ration of grain, silage, hay and/or protein supplement for slaughter market that are expected to produce a carcass that will grade select or better. It excludes cattle being "backgrounded only" for later sale as feeders or later placement in another feedlot.

Placements are cattle put into a feedlot, fed a ration which will produce a carcass that will grade select or better, and are intended for the slaughter market.

Marketings are cattle shipped out of feedlots to a slaughter market.

Other disappearance includes death loss, movement from feedlots to pasture, and shipments to other feedlots for further feeding.

Reliability of Cattle on Feed Estimates

Survey Procedures: During January and July all known feedlots in the U.S. with capacity of 1,000 or more head are surveyed to provide data for cattle on feed estimates. During the other months, all known feedlots from 16 States are surveyed. The 16 States account for 98 percent of the cattle on feed in feedlots with capacity of 1,000 or more head.

Estimating Procedures: These cattle on feed estimates were prepared by the Agricultural Statistics Board after reviewing recommendations and analysis submitted by each State office. Regional and State survey data were reviewed for reasonableness with each other and with estimates from the previous month when setting the current estimates.

Revision Policy: Revisions to previous estimates are made to improve month to month relationships. Estimates for the previous month are subject to revision in all States each month when current estimates are made. In February, all monthly estimates for the previous year, and the number of feedlots and annual marketings from two years ago are reviewed and subject to revisions. The reviews are primarily based on slaughter data, state check-off or brand data, and any other data that may have been received after the original estimate was made. Estimates will also be reviewed after data from the Census of Agriculture are available. No revisions will be made after that date and estimates become final.

Reliability: Since all 1,000+ capacity cattle on feed operators in every State are not included in the monthly survey, survey estimates are subject to sampling variability. Survey results are also subject to non-sampling errors such as omissions, duplications, and mistakes in reporting, recording, and processing the data. The effects of these errors cannot be measured directly. They are minimized through rigid quality controls in the data collection process and through a careful review of all reported data for consistency and reasonableness.

To assist users in evaluating the reliability of estimates in this report, the "**Root Mean Square Error**" is shown for selected items in the following table. The "Root Mean Square Error" is a statistical measure based on past performance and is computed using the differences between first and latest estimates. The "Root Mean Square Error" for cattle on feed inventory estimates over the past 24 months is 0.05 percent. This means that chances are 2 out of 3 that the final estimate will not be above or below the current estimate of 10.5 million head by more than 0.05 percent. Chances are 9 out of 10 that the difference will not exceed 0.1 percent.

The following table also shows a 24 month record of the range of differences between first and latest estimates for selected items. Using estimates of number on feed as an example, changes between the first estimate and the latest estimate during the past 24 months have averaged 3,000 head, ranging from 0 to 18,000 head. During this period the initial estimate has been above the final estimate 5 times and has been below the final estimate 5 times. This does not imply that the initial estimate is likely to understate or overstate final inventory.

Reliability of Monthly Cattle on Feed Estimates ¹

Item	Root Mean Square Error	90% Confidence Level		Difference Between First and Final Estimates			Number of Months	
		Percent	(000) Head	Average	Smallest	Largest	First Above Final	First Below Final
	<i>Percent</i>	<i>Percent</i>	<i>1,000 Head</i>	<i>1,000 Head</i>	<i>1,000 Head</i>	<i>1,000 Head</i>	<i>Number</i>	<i>Number</i>
Number on Feed	0.05	0.10	10.5	3	0	18	5	5
Placements	0.18	0.30	4.9	2	0	9	4	6
Marketings	0.30	0.50	9.3	3	0	21	4	7

¹ Based on data for the past 24 months.

Information Contacts

Listed below are the commodity specialists in the Livestock Branch of the National Agricultural Statistics Service to contact for additional information.

Dan Kerestes, Chief, Livestock Branch (202) 720-3570

Scott Hollis, Head, Livestock Section (202) 690-2424

 Jim Collom – Dairy Products (202) 690-3236

 Joe Gaynor – Dairy Products Prices (202) 690-2168

 Jason Hardegree – Cattle, Cattle on Feed (202) 720-3040

 Sherry Bertramsen – Livestock Slaughter (515) 284-4340

 Everett Olbert – Sheep and Goats (202) 720-4751

 Mike Miller – Milk Production and Milk Cows (202) 720-3278

 Nick Streff – Hogs and Pigs (202) 720-3106

ACCESS TO REPORTS!!

For your convenience, there are several ways to obtain NASS reports, data products, and services:

INTERNET ACCESS

All NASS reports are available free of charge. For free access, connect to the Internet and go to the NASS Home Page at: www.nass.usda.gov.

E-MAIL SUBSCRIPTION

All NASS reports are available by subscription free of charge direct to your e-mail address. Starting with the NASS Home Page at www.nass.usda.gov, under the right navigation, *Receive reports by Email*, click on **National** or **State**. Follow the instructions on the screen.

PRINTED REPORTS OR DATA PRODUCTS

CALL OUR TOLL-FREE ORDER DESK: 800-999-6779 (U.S. and Canada)
Other areas, please call 703-605-6220 FAX: 703-605-6880
(Visa, MasterCard, check, or money order acceptable for payment.)

ASSISTANCE

For **assistance** with general agricultural statistics or further information about NASS or its products or services, contact the **Agricultural Statistics Hotline** at **800-727-9540**, 7:30 a.m. to 4:00 p.m. ET, or e-mail: nass@nass.usda.gov.

The U.S. Department of Agriculture (USDA) prohibits discrimination in all its programs and activities on the basis of race, color, national origin, age, disability, and where applicable, sex, marital status, familial status, parental status, religion, sexual orientation, genetic information, political beliefs, reprisal, or because all or a part of an individual's income is derived from any public assistance program. (Not all prohibited bases apply to all programs.) Persons with disabilities who require alternative means for communication of program information (Braille, large print, audiotape, etc.) should contact USDA's TARGET Center at (202) 720-2600 (voice and TDD).

To file a complaint of discrimination, write to USDA, Director, Office of Civil Rights, 1400 Independence Avenue, S.W., Washington, D.C. 20250-9410, or call (800) 795-3272 (voice) or (202) 720-6382 (TDD). USDA is an equal opportunity provider and employer.