



Cattle on Feed

Released June 18, 2010, by the National Agricultural Statistics Service (NASS), Agricultural Statistics Board, U.S. Department of Agriculture. For information on *Cattle on Feed* call Jason Hardegree at (202) 720-3040, office hours 7:30 a.m. to 4:00 p.m. ET.

Special Note

NASS is in the process of modifying report layouts in order to improve readability. This report issue is published using both layouts but all future issues will only be produced with the new layout, which is available on the NASS website: <http://www.nass.usda.gov>. This is the last issue using this layout.

U.S. Cattle on Feed Up 1 Percent

Cattle and calves on feed for slaughter market in the United States for feedlots with capacity of 1,000 or more head totaled 10.5 million head on June 1, 2010. The inventory was 1 percent above June 1, 2009.

Placements in feedlots during May totaled 2.02 million, 23 percent above 2009. Net placements were 1.92 million head. During May, placements of cattle and calves weighing less than 600 pounds were 445,000, 600-699 pounds were 405,000, 700-799 pounds were 537,000, and 800 pounds and greater were 635,000.

Marketings of fed cattle during May totaled 1.87 million, 4 percent below 2009. This is the lowest fed cattle marketings for the month of May since the series began in 1996.

Other disappearance totaled 102,000 during May, 1 percent above 2009.

**Cattle on Feed: Number on Feed, Placements, Marketings, and
Other Disappearance, 1,000+ Capacity Feedlots,
United States, June 1, 2009-2010**

Item	Number		Percent of Previous Year
	2009	2010	
	<i>1,000 Head</i>	<i>1,000 Head</i>	<i>Percent</i>
On Feed May 1	10,822	*10,443	96
Placed on Feed During May	1,638	2,022	123
Fed Cattle Marketed During May	1,952	1,869	96
Other Disappearance During May	101	102	101
On Feed Jun 1	10,407	10,494	101

* Revised.

**Cattle on Feed: Number on Feed, Placements, Marketings, and
Other Disappearance, 1,000+ Capacity Feedlots,
United States, May 1, 2009-2010**

Item	Number		Percent of Previous Year
	2009	2010	
	<i>1,000 Head</i>	<i>1,000 Head</i>	<i>Percent</i>
On Feed Apr 1	11,162	10,767	96
Placed on Feed During Apr	1,600	*1,627	102
Fed Cattle Marketed During Apr	1,871	*1,857	99
Other Disappearance During Apr	69	*94	136
On Feed May 1	10,822	*10,443	96

* Revised.

**Cattle on Feed: Number on Feed, 1,000+ Capacity Feedlots,
by Month, State, and United States 2009-2010**

State	Jun 1, 2009	May 1, 2010	Jun 1, 2010		
			Number	Percent of Previous Year	Percent of Previous Month
	<i>1,000 Head</i>	<i>1,000 Head</i>	<i>1,000 Head</i>	<i>Percent</i>	<i>Percent</i>
AZ	301	268	263	87	98
CA	470	*425	425	90	100
CO	980	940	970	99	103
ID	205	210	210	102	100
IA	530	600	590	111	98
KS	2,080	2,130	2,130	102	100
NE	2,110	2,240	2,140	101	96
NM	105	(D)	(D)	(D)	(D)
OK	310	325	345	111	106
SD	220	235	230	105	98
TX	2,610	2,510	2,640	101	105
WA	156	175	178	114	102
Oth Sts ¹	330	385	373	(X)	97
US	10,407	*10,443	10,494	101	100

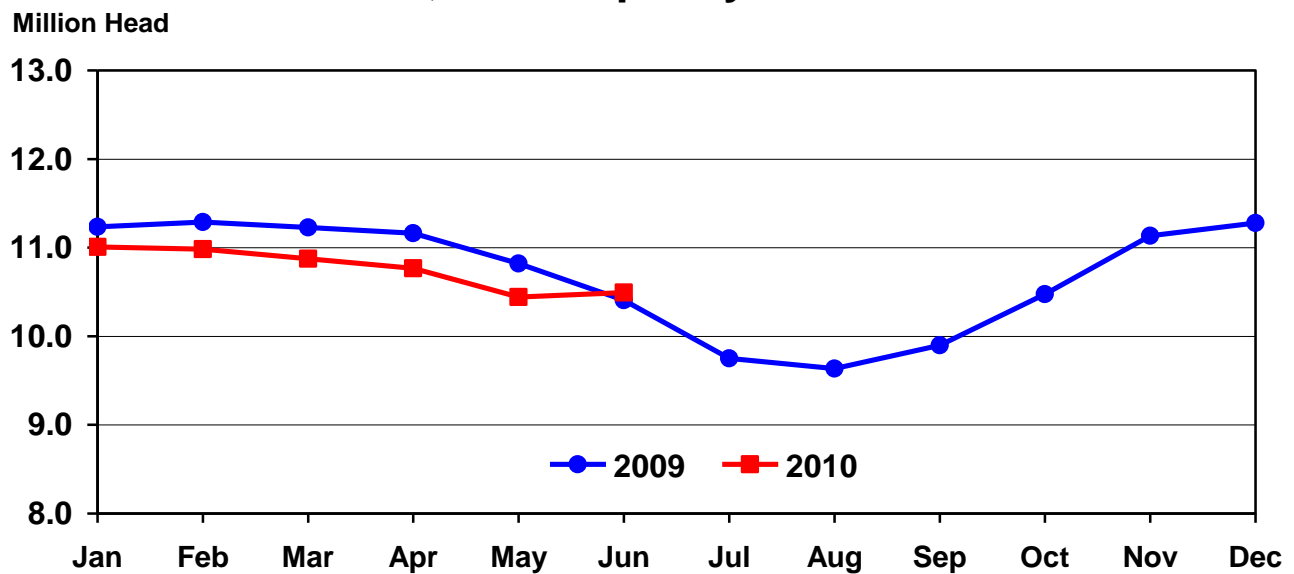
* Revised.

(D) Withheld to avoid disclosing data for individual operations.

(X) Comparison to 2009 is not applicable.

¹ Beginning in July 2009, New Mexico is included in the Other State total.

United States Cattle on Feed 1,000+ Capacity Feedlots



**Cattle on Feed: Number Placed on Feed, 1,000+ Capacity Feedlots,
by Month, State, and United States 2009-2010**

State	During May 2009	During Apr 2010	During May 2010		
			Number	Percent of Previous Year	Percent of Previous Month
	<i>1,000 Head</i>	<i>1,000 Head</i>	<i>1,000 Head</i>	<i>Percent</i>	<i>Percent</i>
AZ	26	16	20	77	125
CA	74	*47	60	81	128
CO	140	170	185	132	109
ID	35	27	32	91	119
IA	60	76	64	107	84
KS	345	315	420	122	133
NE	310	400	380	123	95
NM	16	(D)	(D)	(D)	(D)
OK	67	57	93	139	163
SD	40	39	42	105	108
TX	455	400	620	136	155
WA	31	29	41	132	141
Oth Sts ¹	39	51	65	(X)	127
US	1,638	*1,627	2,022	123	124

* Revised.

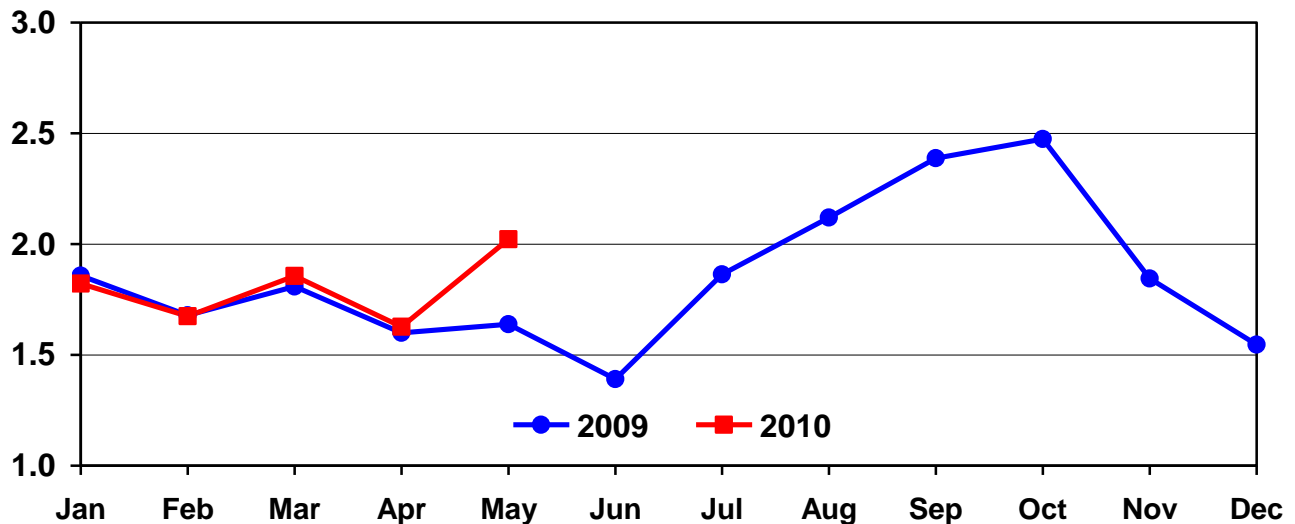
(D) Withheld to avoid disclosing data for individual operations.

(X) Comparison to 2009 is not applicable.

¹ Beginning in July 2009, New Mexico is included in the Other State total.

United States Cattle on Feed 1,000+ Capacity Feedlots Number Placed

Million Head



**Cattle on Feed: Number Placed on Feed by Weight Group, 1,000+ Capacity
Feedlots, by Month, State, and United States 2009-2010**

State	During May									
	Under 600		600-699		700-799		800 Plus		Total	
	2009	2010	2009	2010	2009	2010	2009	2010	2009	2010
	<i>1,000 Head</i>	<i>1,000 Head</i>	<i>1,000 Head</i>	<i>1,000 Head</i>	<i>1,000 Head</i>	<i>1,000 Head</i>	<i>1,000 Head</i>	<i>1,000 Head</i>	<i>1,000 Head</i>	<i>1,000 Head</i>
CO	25	25	25	25	45	45	45	90	140	185
KS	65	60	70	80	110	130	100	150	345	420
NE	30	55	60	70	80	105	140	150	310	380
TX	170	180	100	180	110	170	75	90	455	620
Oth Sts	105	125	50	50	88	87	145	155	388	417
US	395	445	305	405	433	537	505	635	1,638	2,022
	During April									
	Under 600		600-699		700-799		800 Plus		Total	
	2009	2010	2009	2010	2009	2010	2009	2010	2009	2010
	<i>1,000 Head</i>	<i>1,000 Head</i>	<i>1,000 Head</i>	<i>1,000 Head</i>	<i>1,000 Head</i>	<i>1,000 Head</i>	<i>1,000 Head</i>	<i>1,000 Head</i>	<i>1,000 Head</i>	<i>1,000 Head</i>
CO	20	30	30	35	40	45	60	60	150	170
KS	55	55	70	60	90	100	115	100	330	315
NE	55	70	65	70	90	120	140	140	350	400
TX	125	115	90	85	95	120	85	80	395	400
Oth Sts	100	95	60	50	90	*82	125	115	375	*342
US	355	365	315	300	405	*467	525	495	1,600	*1,627

* Revised.

**Cattle on Feed: Number Marketed, 1,000+ Capacity Feedlots,
by Month, State, and United States 2009-2010**

State	During May 2009	During Apr 2010	During May 2010		
			Number	Percent of Previous Year	Percent of Previous Month
	<i>1,000 Head</i>	<i>1,000 Head</i>	<i>1,000 Head</i>	<i>Percent</i>	<i>Percent</i>
AZ	35	24	24	69	100
CA	52	*54	52	100	96
CO	145	145	135	93	93
ID	39	21	31	79	148
IA	68	72	72	106	100
KS	425	405	405	95	100
NE	450	435	455	101	105
NM	28	(D)	(D)	(D)	(D)
OK	71	70	72	101	103
SD	44	38	44	100	116
TX	510	510	475	93	93
WA	35	24	37	106	154
Oth Sts ¹	50	59	67	(X)	114
US	1,952	*1,857	1,869	96	101

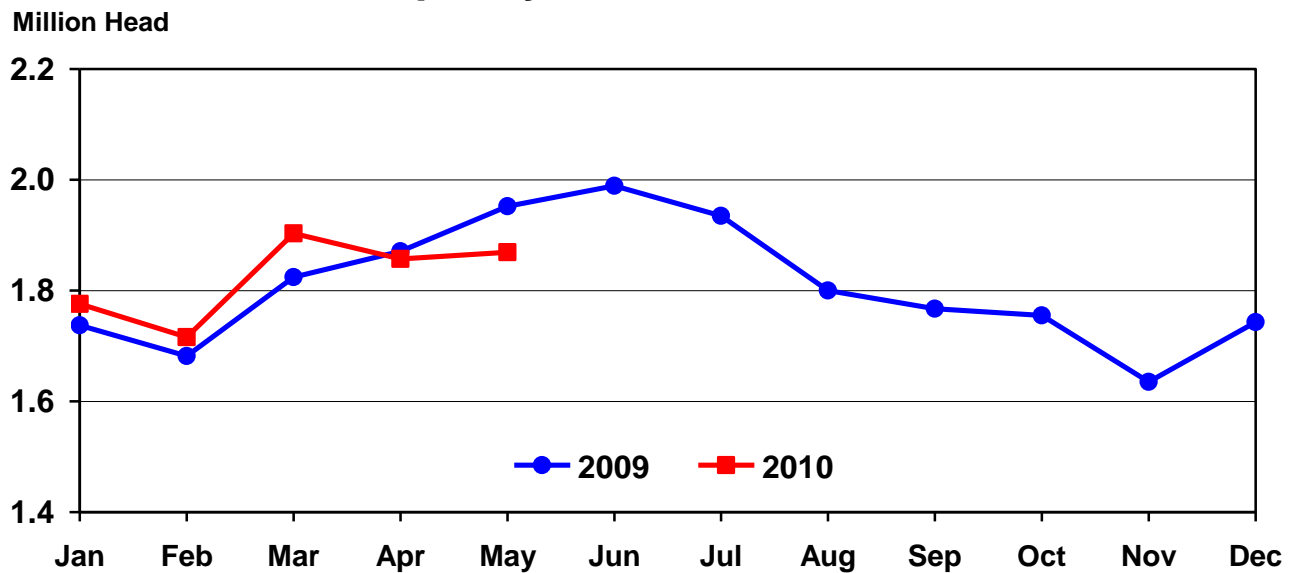
* Revised.

(D) Withheld to avoid disclosing data for individual operations.

(X) Comparison to 2009 is not applicable.

¹ Beginning in July 2009, New Mexico is included in the Other State total.

United States Cattle on Feed 1,000+ Capacity Feedlots Number Marketed



**Cattle on Feed: Other Disappearance, 1,000+ Capacity Feedlots,
by Month, State, and United States 2009-2010**

State	During May 2009	During Apr 2010	During May 2010		
			Number	Percent of Previous Year	Percent of Previous Month
	<i>1,000 Head</i>	<i>1,000 Head</i>	<i>1,000 Head</i>	<i>Percent</i>	<i>Percent</i>
AZ	1	2	1	100	50
CA	2	*8	8	400	100
CO	25	15	20	80	133
ID	1	1	1	100	100
IA	2	4	2	100	50
KS	20	20	15	75	75
NE	20	15	25	125	167
NM	3	(D)	(D)	(D)	(D)
OK	1	2	1	100	50
SD	6	1	3	50	300
TX	15	20	15	100	75
WA	1	1	1	100	100
Oth Sts ¹	4	5	10	(X)	200
US	101	*94	102	101	109

* Revised.

(D) Withheld to avoid disclosing data for individual operations.

(X) Comparison to 2009 is not applicable.

¹ Beginning in July 2009, New Mexico is included in the Other State total.

Terms and Definitions of Cattle on Feed Estimates

Cattle on feed are animals being fed a ration of grain, silage, hay and/or protein supplement for slaughter market that are expected to produce a carcass that will grade select or better. It excludes cattle being "backgrounded only" for later sale as feeders or later placement in another feedlot.

Placements are cattle put into a feedlot, fed a ration which will produce a carcass that will grade select or better, and are intended for the slaughter market.

Marketings are cattle shipped out of feedlots to a slaughter market.

Other disappearance includes death loss, movement from feedlots to pasture, and shipments to other feedlots for further feeding.

Reliability of Cattle on Feed Estimates

Survey Procedures: During January and July all known feedlots in the U.S. with capacity of 1,000 or more head are surveyed to provide data for cattle on feed estimates. During the other months, all known feedlots from 16 States are surveyed. The 16 States account for 98 percent of the cattle on feed in feedlots with capacity of 1,000 or more head.

Estimating Procedures: These cattle on feed estimates were prepared by the Agricultural Statistics Board after reviewing recommendations and analysis submitted by each State office. Regional and State survey data were reviewed for reasonableness with each other and with estimates from the previous month when setting the current estimates.

Revision Policy: Revisions to previous estimates are made to improve month to month relationships. Estimates for the previous month are subject to revision in all States each month when current estimates are made. In February, all monthly estimates for the previous year, and the number of feedlots and annual marketings from two years ago are reviewed and subject to revisions. The reviews are primarily based on slaughter data, state check-off or brand data, and any other data that may have been received after the original estimate was made. Estimates will also be reviewed after data from the Census of Agriculture are available. No revisions will be made after that date and estimates become final.

Reliability: Since all 1,000+ capacity cattle on feed operators in every State are not included in the monthly survey, survey estimates are subject to sampling variability. Survey results are also subject to non-sampling errors such as omissions, duplications, and mistakes in reporting, recording, and processing the data. The effects of these errors cannot be measured directly. They are minimized through rigid quality controls in the data collection process and through a careful review of all reported data for consistency and reasonableness.

To assist users in evaluating the reliability of estimates in this report, the "**Root Mean Square Error**" is shown for selected items in the following table. The "Root Mean Square Error" is a statistical measure based on past performance and is computed using the differences between first and latest estimates. The "Root Mean Square Error" for cattle on feed inventory estimates over the past 24 months is 0.05 percent. This means that chances are 2 out of 3 that the final estimate will not be above or below the current estimate of 10.5 million head by more than 0.05 percent. Chances are 9 out of 10 that the difference will not exceed 0.10 percent.

The following table also shows a 24 month record of the range of differences between first and latest estimates for selected items. Using estimates of number on feed as an example, changes between the first estimate and the latest estimate during the past 24 months have averaged 3,000 head, ranging from 0 to 18,000 head. During this period the initial estimate has been above the final estimate 6 times and has been below the final estimate 5 times. This does not imply that the initial estimate is likely to understate or overstate final inventory.

Reliability of Monthly Cattle on Feed Estimates ¹

Item	Root Mean Square Error	90% Confidence Level		Difference Between First and Final Estimates			Number of Months	
		Percent	(000) Head	Average	Smallest	Largest	First Above Final	First Below Final
	<i>Percent</i>	<i>Percent</i>	<i>1,000 Head</i>	<i>1,000 Head</i>	<i>1,000 Head</i>	<i>1,000 Head</i>	<i>Number</i>	<i>Number</i>
Number on Feed	0.05	0.10	10.5	3	0	18	6	5
Placements	0.19	0.30	6.1	2	0	9	5	6
Marketings	0.30	0.50	9.3	3	0	21	4	8

¹ Based on data for the past 24 months.

Information Contacts

Listed below are the commodity specialists in the Livestock Branch of the National Agricultural Statistics Service to contact for additional information.

Dan Kerestes, Chief, Livestock Branch (202) 720-3570

Scott Hollis, Head, Livestock Section (202) 690-2424

 Jim Collom – Dairy Products (202) 690-3236

 Joe Gaynor – Dairy Products Prices (202) 690-2168

 Jason Hardegree – Cattle, Cattle on Feed (202) 720-3040

 Sherry Bertramsen – Livestock Slaughter (515) 284-4340

 Everett Olbert – Sheep and Goats (202) 720-4751

 Mike Miller – Milk Production and Milk Cows (202) 720-3278

 Nick Streff – Hogs and Pigs (202) 720-3106

ACCESS TO REPORTS!!

For your convenience, there are several ways to obtain NASS reports, data products, and services:

INTERNET ACCESS

All NASS reports are available free of charge. For free access, connect to the Internet and go to the NASS Home Page at: www.nass.usda.gov.

E-MAIL SUBSCRIPTION

All NASS reports are available by subscription free of charge direct to your e-mail address. Starting with the NASS Home Page at www.nass.usda.gov, under the right navigation, *Receive reports by Email*, click on **National** or **State**. Follow the instructions on the screen.

PRINTED REPORTS OR DATA PRODUCTS

CALL OUR TOLL-FREE ORDER DESK: 800-999-6779 (U.S. and Canada)
Other areas, please call 703-605-6220 FAX: 703-605-6880
(Visa, MasterCard, check, or money order acceptable for payment.)

ASSISTANCE

For **assistance** with general agricultural statistics or further information about NASS or its products or services, contact the **Agricultural Statistics Hotline** at **800-727-9540**, 7:30 a.m. to 4:00 p.m. ET, or e-mail: nass@nass.usda.gov.

The U.S. Department of Agriculture (USDA) prohibits discrimination in all its programs and activities on the basis of race, color, national origin, age, disability, and where applicable, sex, marital status, familial status, parental status, religion, sexual orientation, genetic information, political beliefs, reprisal, or because all or a part of an individual's income is derived from any public assistance program. (Not all prohibited bases apply to all programs.) Persons with disabilities who require alternative means for communication of program information (Braille, large print, audiotape, etc.) should contact USDA's TARGET Center at (202) 720-2600 (voice and TDD).

To file a complaint of discrimination, write to USDA, Director, Office of Civil Rights, 1400 Independence Avenue, S.W., Washington, D.C. 20250-9410, or call (800) 795-3272 (voice) or (202) 720-6382 (TDD). USDA is an equal opportunity provider and employer.