



Cattle on Feed

ISSN: 1948-9080

Released July 23, 2010, by the National Agricultural Statistics Service (NASS), Agricultural Statistics Board, United States Department of Agriculture (USDA).

U.S. Cattle on Feed Up 3 Percent

Cattle and calves on feed for slaughter market in the United States for feedlots with capacity of 1,000 or more head totaled 10.1 million head on July 1, 2010. The inventory was 3 percent above July 1, 2009. The inventory included 6.25 million steers and steer calves, up 4 percent from the previous year. This group accounted for 62 percent of the total inventory. Heifers and heifer calves accounted for 3.77 million head, up 1 percent from 2009.

Placements in feedlots during June totaled 1.63 million, 17 percent above 2009. Net placements were 1.57 million head. During June, placements of cattle and calves weighing less than 600 pounds were 440,000, 600-699 pounds were 300,000, 700-799 pounds were 408,000, and 800 pounds and greater were 480,000.

Marketings of fed cattle during June totaled 2.00 million, slightly above 2009.

Other disappearance totaled 55,000 during June, 4 percent below 2009.

U.S. All Cattle on Feed Up 3 Percent

Cattle on feed July 1, 2010, from all feedlots in the United States, totaled 12.0 million, up 3 percent from the 11.6 million on July 1, 2009. Cattle on feed in feedlots with 1,000 or more head accounted for 84 percent of the total cattle on feed on July 1, 2010, down slightly from July 1, 2009.

Number of Cattle on Feed, Placements, Marketings, and Other Disappearance on 1,000+ Capacity Feedlots - United States: July 1, 2009 and 2010

Item	Number		Percent of previous year
	2009	2010	
	(1,000 head)	(1,000 head)	(percent)
On feed June 1	10,407	10,494	101
Placed on feed during June	1,391	1,628	117
Fed cattle marketed during June	1,989	1,997	100
Other disappearance during June	57	55	96
On feed July 1	9,752	10,070	103

Number of Cattle on Feed, Placements, Marketings, and Other Disappearance on 1,000+ Capacity Feedlots - United States: June 1, 2009 and 2010

Item	Number		Percent of previous year
	2009	2010	
	(1,000 head)	(1,000 head)	(percent)
On feed May 1	10,822	10,443	96
Placed on feed during May	1,638	2,022	123
Fed cattle marketed during May	1,952	1,869	96
Other disappearance during May	101	102	101
On feed June 1	10,407	10,494	101

Number on Feed by Class on 1,000+ Capacity Feedlots - United States: July 1, 2009 and 2010

Item	Number		Percent of previous year
	2009	2010	
	(1,000 Head)	(1,000 Head)	(percent)
Class on Feed July 1			
Steers and Steer Calves	5,992	6,254	104
Heifers and Heifer Calves	3,719	3,766	101
Cows and Bulls	41	50	122

Total Number on Feed - United States: July 1, 2009 and 2010

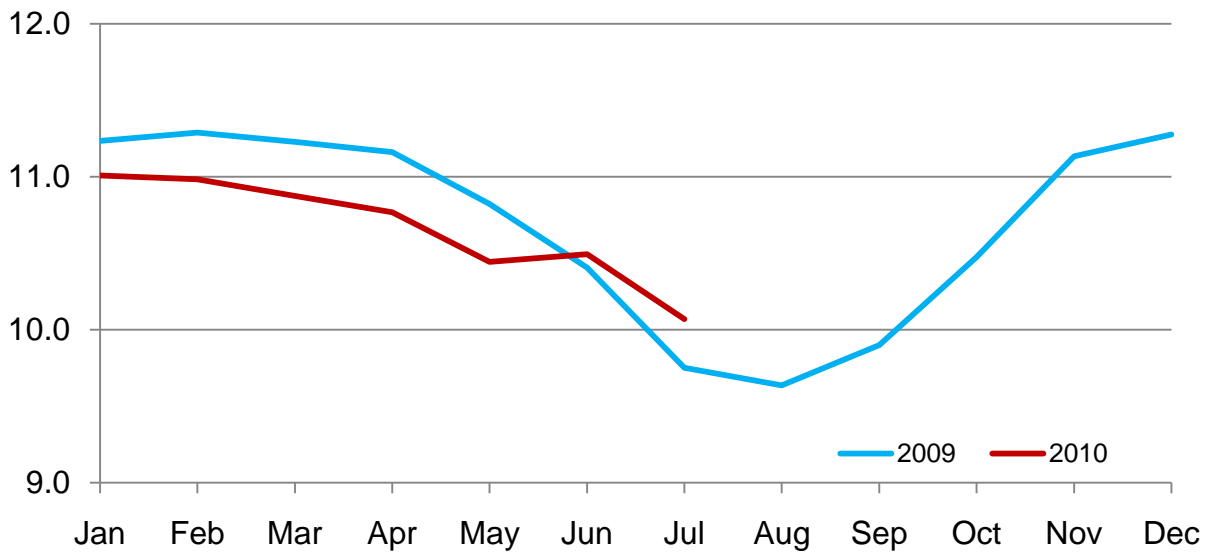
State	Number		Percent of previous year
	2009	2010	
	(1,000 Head)	(1,000 Head)	(percent)
United States	11,600	12,000	103

Number of Cattle on Feed on 1,000+ Capacity Feedlots by Month - States and United States: 2009 and 2010

State	July 1, 2009	June 1, 2010	July 1, 2010		
			Number	Percent of previous year	Percent of previous month
	(1,000 head)	(1,000 head)	(1,000 head)	(percent)	(percent)
Arizona	287	263	255	89	97
California	460	425	430	93	101
Colorado	910	970	920	101	95
Idaho	200	210	200	100	95
Iowa	520	590	570	110	97
Kansas	1,920	2,130	2,010	105	94
Nebraska	1,920	2,140	2,000	104	93
Oklahoma	295	345	350	119	101
South Dakota	205	230	215	105	93
Texas	2,490	2,640	2,590	104	98
Washington	146	178	167	114	94
Other States	399	373	363	91	97
United States	9,752	10,494	10,070	103	96

**Number of Cattle on Feed
1,000+ Capacity Feedlots - United States**

Million head

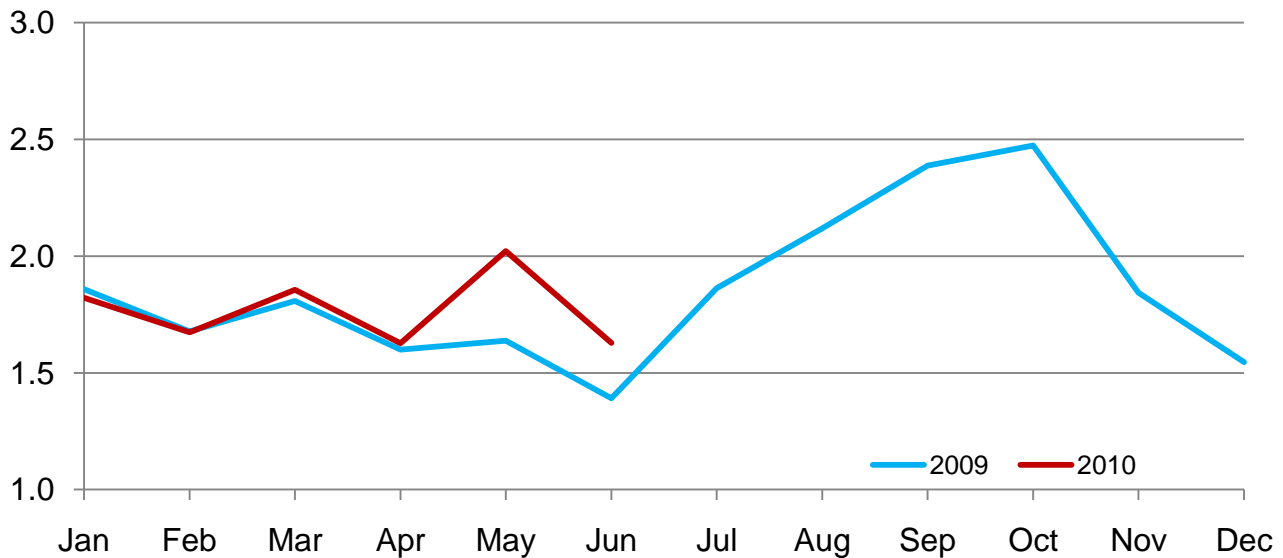


Number of Cattle Placed on Feed on 1,000+ Capacity Feedlots by Month - States and United States: 2009 and 2010

State	During June 2009	During May 2010	During June 2010		
			Number	Percent of previous year	Percent of previous month
	(1,000 head)	(1,000 head)	(1,000 head)	(percent)	(percent)
Arizona	21	20	21	100	105
California	43	60	64	149	107
Colorado	125	185	125	100	68
Idaho	32	32	34	106	106
Iowa	59	64	57	97	89
Kansas	305	420	365	120	87
Nebraska	270	380	310	115	82
Oklahoma	44	93	66	150	71
South Dakota	25	42	23	92	55
Texas	380	620	470	124	76
Washington	30	41	32	107	78
Other States	57	65	61	107	94
United States	1,391	2,022	1,628	117	81

**Number of Cattle Placed on Feed
1,000+ Capacity Feedlots - United States**

Million Head



Number of Cattle Placed on Feed by Weight Group on 1,000+ Capacity Feedlots by Month - States and United States: 2009 and 2010

State	During June									
	Under 600 lbs		600-699 lbs		700-799 lbs		800+ lbs		Total	
	2009	2010	2009	2010	2009	2010	2009	2010	2009	2010
	(1,000 head)	(1,000 head)	(1,000 head)	(1,000 head)	(1,000 head)	(1,000 head)	(1,000 head)	(1,000 head)	(1,000 head)	(1,000 head)
Colorado	15	20	20	20	35	30	55	55	125	125
Kansas	55	65	70	80	95	115	85	105	305	365
Nebraska	50	60	55	50	55	70	110	130	270	310
Texas	110	175	95	105	125	125	50	65	380	470
Other States	85	120	50	45	61	68	115	125	311	358
United States	315	440	290	300	371	408	415	480	1,391	1,628

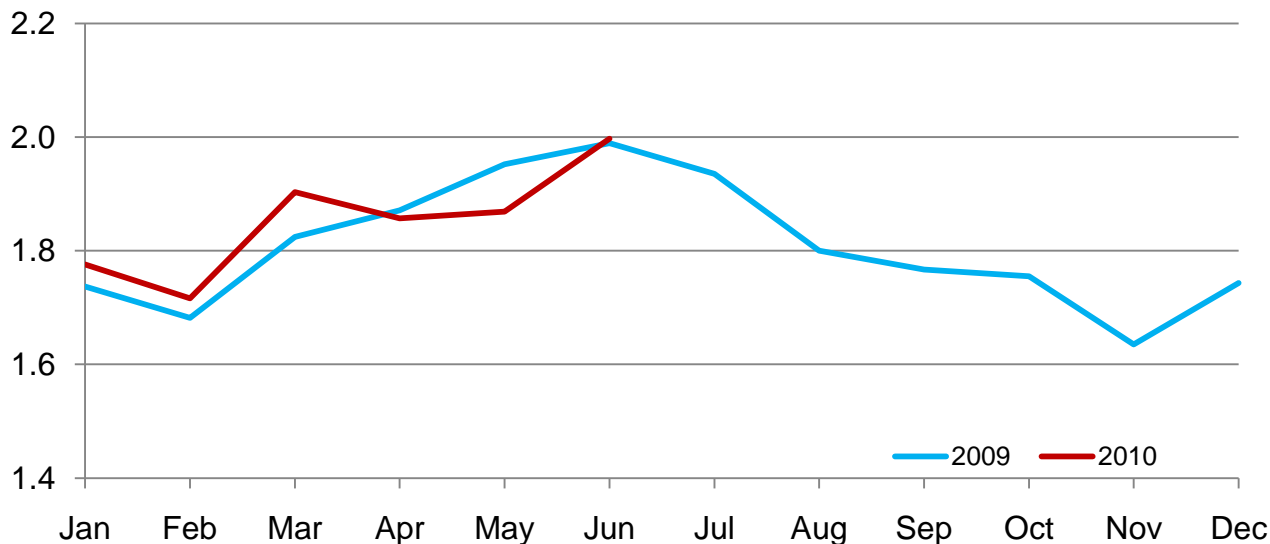
State	During May									
	Under 600 lbs		600-699 lbs		700-799 lbs		800+ lbs		Total	
	2009	2010	2009	2010	2009	2010	2009	2010	2009	2010
	(1,000 head)	(1,000 head)	(1,000 head)	(1,000 head)	(1,000 head)	(1,000 head)	(1,000 head)	(1,000 head)	(1,000 head)	(1,000 head)
Colorado	25	25	25	25	45	45	45	90	140	185
Kansas	65	60	70	80	110	130	100	150	345	420
Nebraska	30	55	60	70	80	105	140	150	310	380
Texas	170	180	100	180	110	170	75	90	455	620
Other States	105	125	50	50	88	87	145	155	388	417
United States	395	445	305	405	433	537	505	635	1,638	2,022

Number of Cattle Marketed on 1,000+ Capacity Feedlots by Month - States and United States: 2009 and 2010

State	During June 2009	During May 2010	During June 2010		
			Number	Percent of previous year	Percent of previous month
	(1,000 head)	(1,000 head)	(1,000 head)	(percent)	(percent)
Arizona	34	24	27	79	113
California	51	52	56	110	108
Colorado	190	135	170	89	126
Idaho	36	31	43	119	139
Iowa	67	72	75	112	104
Kansas	455	405	475	104	117
Nebraska	440	455	435	99	96
Oklahoma	58	72	60	103	83
South Dakota	39	44	36	92	82
Texas	490	475	510	104	107
Washington	39	37	42	108	114
Other States	90	67	68	76	101
United States	1,989	1,869	1,997	100	107

Number of Cattle Marketed 1,000+ Capacity Feedlots - United States

Million Head



Other Disappearance on 1,000+ Capacity Feedlots by Month - States and United States: 2009 and 2010

State	During June 2009 (1,000 head)	During May 2010 (1,000 head)	During June 2010		
			Number (1,000 head)	Percent of previous year (percent)	Percent of previous month (percent)
Arizona	1	1	2	200	200
California	2	8	3	150	38
Colorado	5	20	5	100	25
Idaho	1	1	1	100	100
Iowa	2	2	2	100	100
Kansas	10	15	10	100	67
Nebraska	20	25	15	75	60
Oklahoma	1	1	1	100	100
South Dakota	1	3	2	200	67
Texas	10	15	10	100	67
Washington	1	1	1	100	100
Other States	3	10	3	100	30
United States	57	102	55	96	54

Number on Feed by Class on 1,000+ Capacity Feedlots by Quarter - States and United States: 2009 and 2010

State	Steers and Steer Calves			Heifers and Heifer Calves			Cows and Bulls		
	Jul 1, 2009	Apr 1, 2010	Jul 1, 2010	Jul 1, 2009	Apr 1, 2010	Jul 1, 2010	Jul 1, 2009	Apr 1, 2010	Jul 1, 2010
	(1,000 Head)	(1,000 Head)	(1,000 Head)	(1,000 Head)	(1,000 Head)	(1,000 Head)	(1,000 Head)	(1,000 Head)	(1,000 Head)
Arizona	286	275	254	1	3	1	0	0	0
California	410	360	425	50	80	5	0	0	0
Colorado	615	630	635	290	295	280	5	5	5
Idaho	105	122	115	94	82	77	1	1	8
Iowa	365	420	400	155	180	170	0	0	0
Kansas	970	1,190	1,030	945	1,045	970	5	5	10
Nebraska	1,130	1,410	1,210	785	870	785	5	10	5
Oklahoma	173	190	185	122	150	165	0	0	0
South Dakota	105	125	106	80	93	91	20	17	18
Texas	1,500	1,610	1,550	989	1,029	1,039	1	1	1
Washington	80	101	97	65	69	69	1	1	1
Other States	253	273	247	143	124	114	3	1	2
United States	5,992	6,706	6,254	3,719	4,020	3,766	41	41	50

Terms and Definitions of Cattle on Feed Estimates

Cattle on feed are animals being fed a ration of grain, silage, hay and/or protein supplement for slaughter market that are expected to produce a carcass that will grade select or better. It excludes cattle being "backgrounded only" for later sale as feeders or later placement in another feedlot.

Placements are cattle put into a feedlot, fed a ration which will produce a carcass that will grade select or better, and are intended for the slaughter market.

Marketings are cattle shipped out of feedlots to a slaughter market.

Other disappearance includes death loss, movement from feedlots to pasture, and shipments to other feedlots for further feeding.

Reliability of Cattle on Feed Estimates

Survey Procedures: During January and July all known feedlots in the United States with capacity of 1,000 or more head are surveyed to provide data for cattle on feed estimates. During the other months, all known feedlots from 16 States are surveyed. The 16 States account for 98 percent of the cattle on feed in feedlots with capacity of 1,000 or more head. Individual State estimates are published monthly for 11 of the 16 States. Data collected from the remaining 5 States are used to establish the "Other States" estimates. These 5 States include IL, MN, NM, OR, and WY. The "Other States" category represents all cattle on feed with a capacity of 1,000 or more head for the rest of the United States.

Estimating Procedures: These cattle on feed estimates were prepared by the Agricultural Statistics Board after reviewing recommendations and analysis submitted by each State office. Regional and State survey data were reviewed for reasonableness with each other and with estimates from the previous month when establishing the current estimates.

Revision Policy: Revisions to previous estimates are made to improve month to month relationships. Estimates for the previous month are subject to revision in all States each month when current estimates are made. In February, all monthly estimates for the previous year, and the number of feedlots and annual marketings from two years ago are reviewed and subject to revisions. The reviews are primarily based on slaughter data, state check-off or brand data, and any other data that may have been received after the original estimate was made. Estimates will also be reviewed after data from the Census of Agriculture are available. No revisions will be made after that date and estimates become final.

Reliability: Since all 1,000+ capacity cattle on feed operators in every State are not included in the monthly survey, survey estimates are subject to sampling variability. Survey results are also subject to non-sampling errors such as omissions, duplications, and mistakes in reporting, recording, and processing the data. The effects of these errors cannot be measured directly. They are minimized through rigid quality controls in the data collection process and through a careful review of all reported data for consistency and reasonableness.

To assist users in evaluating the reliability of estimates in this report, the "**Root Mean Square Error**" is shown for selected items in the following table. The "Root Mean Square Error" is a statistical measure based on past performance and is computed using the differences between first and latest estimates. The "Root Mean Square Error" for cattle on feed inventory estimates over the past 24 months is 0.05 percent. This means that chances are 2 out of 3 that the final estimate will not be above or below the current estimate of 10.1 million head by more than 0.05 percent. Chances are 9 out of 10 that the difference will not exceed 0.10 percent.

The table on the following page shows a 24 month record of the range of differences between first and latest estimates for selected items. Using estimates of number on feed as an example, changes between the first estimate and the latest estimate during the past 24 months have averaged 3,000 head, ranging from 0 to 18,000 head. During this period the initial estimate has been above the latest estimate 6 times and has been below the latest estimate 4 times. This does not imply that the initial estimate is likely to understate or overstate final inventory.

Reliability of Monthly Cattle on Feed Estimates

[Based on data for the past 24 months]

Item	Root mean square error	90 percent confidence level		Difference between first and latest estimates			Number of months	
				Average	Smallest	Largest	First above latest	First below latest
	(percent)	(percent)	(1,000 head)	(1,000 head)	(1,000 head)	(1,000 head)	(number)	(number)
Number on feed	0.05	0.10	10.1	3	0	18	6	4
Placements	0.19	0.30	4.9	2	0	9	5	5
Marketings	0.30	0.50	10.0	3	0	21	4	8

Information Contacts

Listed below are the commodity specialists in the Livestock Branch of the National Agricultural Statistics Service to contact for additional information. E-mail inquiries may be sent to nass@nass.usda.gov

Dan Kerestes, Chief, Livestock Branch	(202) 720-3570
Scott Hollis, Head, Livestock Section	(202) 690-2424
Jim Collom – Dairy Products	(202) 690-3236
Joe Gaynor – Dairy Products Prices	(202) 690-2168
Jason Hardegree – Cattle, Cattle on Feed	(202) 720-3040
Sherry Bertramsen – Livestock Slaughter	(515) 284-4340
Everett Olbert – Sheep and Goats	(202) 720-4751
Mike Miller – Milk Production and Milk Cows	(202) 720-3278
Nick Streff – Hogs and Pigs	(202) 720-3106

Access to NASS Reports

For your convenience, you may access NASS reports and products the following ways:

- All reports are available electronically, at no cost, on the NASS web site: <http://www.nass.usda.gov>
- Both national and state specific reports are available via a free e-mail subscription. To set-up this free subscription, visit <http://www.nass.usda.gov> and in the “Receive NASS Updates” box under “Receive reports by Email,” click on “National” or “State” to select the reports you would like to receive.
- Printed reports may be purchased from the National Technical Information Service (NTIS) by calling toll-free (800) 999-6779, or (703) 605-6220 if calling from outside the United States or Canada. Accepted methods of payment are Visa, MasterCard, check, or money order.

For more information on NASS surveys and reports, call the NASS Agricultural Statistics Hotline at (800) 727-9540, 7:30 a.m. to 4:00 p.m. ET, or e-mail: nass@nass.usda.gov.

The United States Department of Agriculture (USDA) prohibits discrimination in all its programs and activities on the basis of race, color, national origin, age, disability, and where applicable, sex, marital status, familial status, parental status, religion, sexual orientation, genetic information, political beliefs, reprisal, or because all or a part of an individual's income is derived from any public assistance program. (Not all prohibited bases apply to all programs.) Persons with disabilities who require alternative means for communication of program information (Braille, large print, audiotape, etc.) should contact USDA's TARGET Center at (202) 720-2600 (voice and TDD).

To file a complaint of discrimination, write to USDA, Director, Office of Civil Rights, 1400 Independence Avenue, S.W., Washington, D.C. 20250-9410, or call (800) 795-3272 (voice) or (202) 720-6382 (TDD). USDA is an equal opportunity provider and employer.