



Cattle on Feed

ISSN: 1948-9080

Released August 20, 2010, by the National Agricultural Statistics Service (NASS), Agricultural Statistics Board, United States Department of Agriculture (USDA).

United States Cattle on Feed Up 2 Percent

Cattle and calves on feed for slaughter market in the United States for feedlots with capacity of 1,000 or more head totaled 9.9 million head on August 1, 2010. The inventory was 2 percent above August 1, 2009.

Placements in feedlots during July totaled 1.75 million, 6 percent below 2009. Net placements were 1.71 million head. During July, placements of cattle and calves weighing less than 600 pounds were 415,000, 600-699 pounds were 305,000, 700-799 pounds were 449,000, and 800 pounds and greater were 585,000.

Marketings of fed cattle during July totaled 1.90 million, 2 percent below 2009. This is the lowest fed cattle marketings for the month of July since the series began in 1996.

Other disappearance totaled 48,000 during July, 12 percent above 2009.

Number of Cattle on Feed, Placements, Marketings, and Other Disappearance on 1,000+ Capacity Feedlots – United States: August 1, 2009 and 2010

Item	Number		Percent of previous year
	2009	2010	
	(1,000 head)	(1,000 head)	(percent)
On feed July 1	9,752	10,070	103
Placed on feed during July	1,863	1,754	94
Fed cattle marketed during July	1,935	1,903	98
Other disappearance during July	43	48	112
On feed August 1	9,637	9,873	102

Number of Cattle on Feed, Placements, Marketings, and Other Disappearance on 1,000+ Capacity Feedlots – United States: July 1, 2009 and 2010

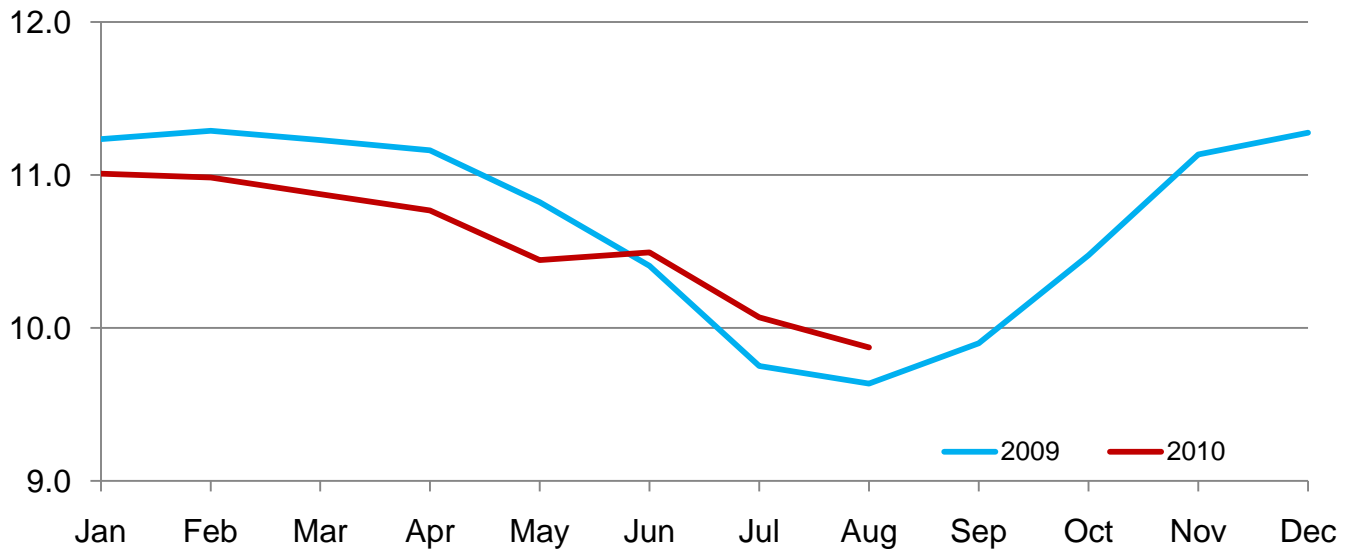
Item	Number		Percent of previous year
	2009	2010	
	(1,000 head)	(1,000 head)	(percent)
On feed June 1	10,407	10,494	101
Placed on feed during June	1,391	1,628	117
Fed cattle marketed during June	1,989	1,997	100
Other disappearance during June	57	55	96
On feed July 1	9,752	10,070	103

Number of Cattle on Feed on 1,000+ Capacity Feedlots by Month – States and United States: 2009 and 2010

State	August 1, 2009	July 1, 2010	August 1, 2010		
			Number	Percent of previous year	Percent of previous month
	(1,000 head)	(1,000 head)	(1,000 head)	(percent)	(percent)
Arizona	275	255	248	90	97
California	450	430	435	97	101
Colorado	850	920	890	105	97
Idaho	195	200	185	95	93
Iowa	510	570	560	110	98
Kansas	1,920	2,010	2,040	106	101
Nebraska	1,920	2,000	1,960	102	98
Oklahoma	310	350	335	108	96
South Dakota	190	215	200	105	93
Texas	2,510	2,590	2,520	100	97
Washington	138	167	161	117	96
Other States	369	363	339	92	93
United States	9,637	10,070	9,873	102	98

**United States Cattle on Feed
1,000+ Capacity Feedlots**

Million head

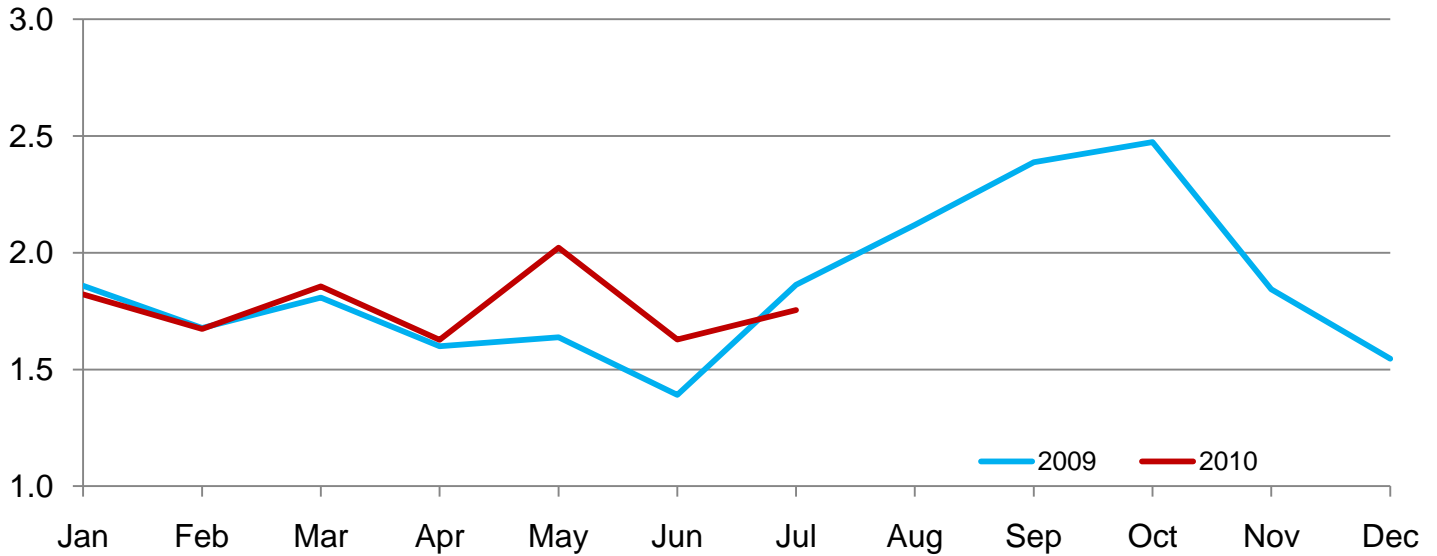


Number of Cattle Placed on Feed on 1,000+ Capacity Feedlots by Month – States and United States: 2009 and 2010

State	During July 2009 (1,000 head)	During June 2010 (1,000 head)	During July 2010		
			Number (1,000 head)	Percent of previous year (percent)	Percent of previous month (percent)
Arizona	25	21	21	84	100
California	45	64	51	113	80
Colorado	125	125	140	112	112
Idaho	33	34	31	94	91
Iowa	61	57	69	113	121
Kansas	480	365	500	104	137
Nebraska	410	310	370	90	119
Oklahoma	69	66	49	71	74
South Dakota	29	23	33	114	143
Texas	495	470	410	83	87
Washington	33	32	33	100	103
Other States	58	61	47	81	77
United States	1,863	1,628	1,754	94	108

**United States Cattle on Feed
1,000+ Capacity Feedlots Number Placed**

Million Head



Number of Cattle Placed on Feed by Weight Group on 1,000+ Capacity Feedlots by Month – States and United States: 2009 and 2010

State	During July									
	Under 600 lbs		600-699 lbs		700-799 lbs		800+ lbs		Total	
	2009	2010	2009	2010	2009	2010	2009	2010	2009	2010
	(1,000 head)	(1,000 head)	(1,000 head)	(1,000 head)	(1,000 head)	(1,000 head)	(1,000 head)	(1,000 head)	(1,000 head)	(1,000 head)
Colorado	15	15	15	20	35	40	60	65	125	140
Kansas	80	75	90	90	150	165	160	170	480	500
Nebraska	60	50	80	70	95	90	175	160	410	370
Texas	200	190	125	75	105	85	65	60	495	410
Other States	100	85	55	50	73	69	125	130	353	334
United States	455	415	365	305	458	449	585	585	1,863	1,754

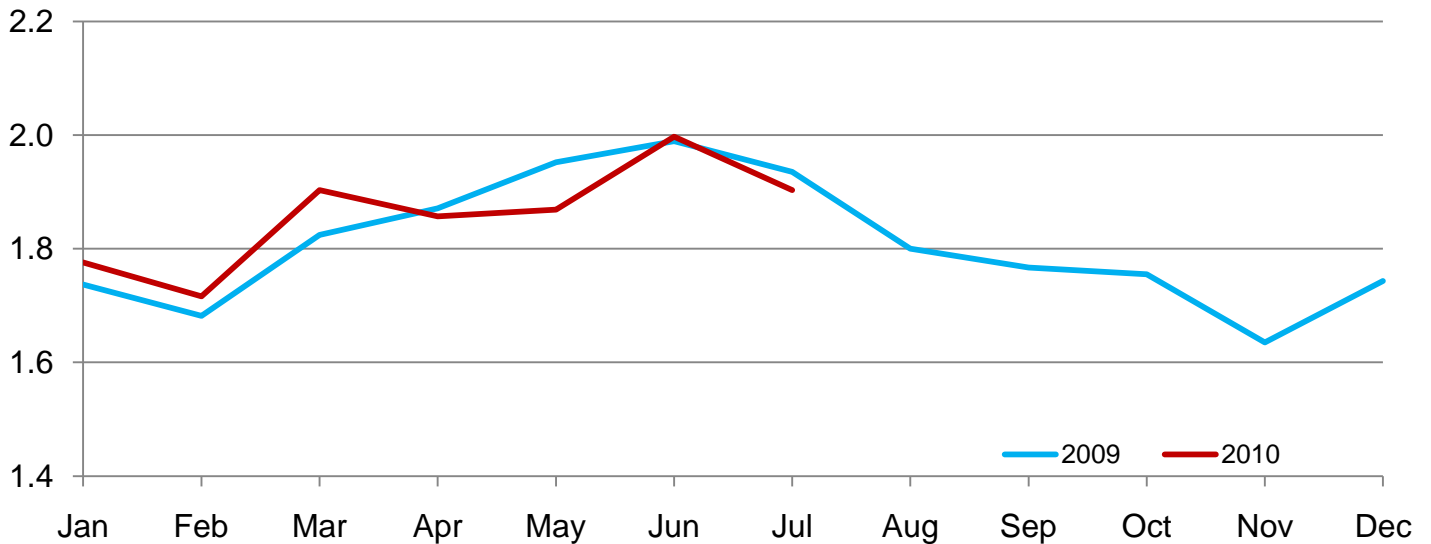
State	During June									
	Under 600 lbs		600-699 lbs		700-799 lbs		800+ lbs		Total	
	2009	2010	2009	2010	2009	2010	2009	2010	2009	2010
	(1,000 head)	(1,000 head)	(1,000 head)	(1,000 head)	(1,000 head)	(1,000 head)	(1,000 head)	(1,000 head)	(1,000 head)	(1,000 head)
Colorado	15	20	20	20	35	30	55	55	125	125
Kansas	55	65	70	80	95	115	85	105	305	365
Nebraska	50	60	55	50	55	70	110	130	270	310
Texas	110	175	95	105	125	125	50	65	380	470
Other States	85	120	50	45	61	68	115	125	311	358
United States	315	440	290	300	371	408	415	480	1,391	1,628

Number of Cattle Marketed on 1,000+ Capacity Feedlots by Month – States and United States: 2009 and 2010

State	During July 2009	During June 2010	During July 2010		
			Number	Percent of previous year	Percent of previous month
	(1,000 head)	(1,000 head)	(1,000 head)	(percent)	(percent)
Arizona	36	27	27	75	100
California	53	56	43	81	77
Colorado	180	170	165	92	97
Idaho	37	43	45	122	105
Iowa	70	75	77	110	103
Kansas	470	475	460	98	97
Nebraska	400	435	400	100	92
Oklahoma	52	60	63	121	105
South Dakota	43	36	47	109	131
Texas	470	510	470	100	92
Washington	40	42	38	95	90
Other States	84	68	68	81	100
United States	1,935	1,997	1,903	98	95

United States Cattle on Feed 1,000+ Capacity Feedlots Number Marketed

Million Head



Other Disappearance on 1,000+ Capacity Feedlots by Month – States and United States: 2009 and 2010

State	During July 2009 (1,000 head)	During June 2010 (1,000 head)	During July 2010		
			Number (1,000 head)	Percent of previous year (percent)	Percent of previous month (percent)
Arizona	1	2	1	100	50
California	2	3	3	150	100
Colorado	5	5	5	100	100
Idaho	1	1	1	100	100
Iowa	1	2	2	200	100
Kansas	10	10	10	100	100
Nebraska	10	15	10	100	67
Oklahoma	2	1	1	50	100
South Dakota	1	2	1	100	50
Texas	5	10	10	200	100
Washington	1	1	1	100	100
Other States	4	3	3	75	100
United States	43	55	48	112	87

Terms and Definitions of Cattle on Feed Estimates

Cattle on feed are animals being fed a ration of grain, silage, hay and/or protein supplement for slaughter market that are expected to produce a carcass that will grade select or better. It excludes cattle being "backgrounded only" for later sale as feeders or later placement in another feedlot.

Placements are cattle put into a feedlot, fed a ration which will produce a carcass that will grade select or better, and are intended for the slaughter market.

Marketings are cattle shipped out of feedlots to a slaughter market.

Other disappearance includes death loss, movement from feedlots to pasture, and shipments to other feedlots for further feeding.

Reliability of Cattle on Feed Estimates

Survey Procedures: During January and July all known feedlots in the United States with capacity of 1,000 or more head are surveyed to provide data for cattle on feed estimates. During the other months, all known feedlots from 16 States are surveyed. The 16 States account for 98 percent of the cattle on feed in feedlots with capacity of 1,000 or more head. Individual State estimates are published monthly for 11 of the 16 States. Data collected from the remaining 5 States are used to establish the "Other States" estimates. These 5 States include IL, MN, NM, OR, and WY. The "Other States" category represents all cattle on feed with a capacity of 1,000 or more head for the rest of the United States.

Estimating Procedures: These cattle on feed estimates were prepared by the Agricultural Statistics Board after reviewing recommendations and analysis submitted by each State office. Regional and State survey data were reviewed for reasonableness with each other and with estimates from the previous month when establishing the current estimates.

Revision Policy: Revisions to previous estimates are made to improve month to month relationships. Estimates for the previous month are subject to revision in all States each month when current estimates are made. In February, all monthly estimates for the previous year, and the number of feedlots and annual marketings from two years ago are reviewed and subject to revisions. The reviews are primarily based on slaughter data, state check-off or brand data, and any other data that may have been received after the original estimate was made. Estimates will also be reviewed after data from the Census of Agriculture are available. No revisions will be made after that date and estimates become final.

Reliability: Since all 1,000+ capacity cattle on feed operators in every State are not included in the monthly survey, survey estimates are subject to sampling variability. Survey results are also subject to non-sampling errors such as omissions, duplications, and mistakes in reporting, recording, and processing the data. The effects of these errors cannot be measured directly. They are minimized through rigid quality controls in the data collection process and through a careful review of all reported data for consistency and reasonableness.

To assist users in evaluating the reliability of estimates in this report, the "**Root Mean Square Error**" is shown for selected items in the table on the following page. The "Root Mean Square Error" is a statistical measure based on past performance and is computed using the differences between first and latest estimates. The "Root Mean Square Error" for cattle on feed inventory estimates over the past 24 months is 0.05 percent. This means that chances are 2 out of 3 that the final estimate will not be above or below the current estimate of 9.9 million head by more than 0.05 percent. Chances are 9 out of 10 that the difference will not exceed 0.10 percent.

The table on the following page shows a 24 month record of the range of differences between first and latest estimates for selected items. Using estimates of number on feed as an example, changes between the first estimate and the latest estimate during the past 24 months have averaged 3,000 head, ranging from 0 to 18,000 head. During this period the initial estimate has been above the latest estimate 6 times and has been below the latest estimate 4 times. This does not imply that the initial estimate is likely to understate or overstate final inventory.

Reliability of Monthly Cattle on Feed Estimates

[Based on data for the past 24 months]

Item	Root mean square error	90 percent confidence level	Difference between first and latest estimate				
			Average	Smallest	Largest	Years	
						Below latest	Above latest
	(percent)	(percent)	(1,000)	(1,000)	(1,000)	(number)	(number)
Number on feed	0.05	0.10	3	0	18	4	6
Placements	0.17	0.30	2	0	9	4	5
Marketings	0.29	0.50	2	0	21	7	4

Information Contacts

Listed below are the commodity specialists in the Livestock Branch of the National Agricultural Statistics Service to contact for additional information. E-mail inquiries may be sent to nass@nass.usda.gov

Dan Kerestes, Chief, Livestock Branch	(202) 720-3570
Scott Hollis, Head, Livestock Section	(202) 690-2424
Jim Collom – Dairy Products	(202) 690-3236
Joe Gaynor – Dairy Products Prices	(202) 690-2168
Jason Hardegree – Cattle, Cattle on Feed	(202) 720-3040
Sherry Bertramsen – Livestock Slaughter	(515) 284-4340
Everett Olbert – Sheep and Goats	(202) 720-4751
Mike Miller – Milk Production and Milk Cows	(202) 720-3278
Nick Streff – Hogs and Pigs	(202) 720-3106

Access to NASS Reports

For your convenience, you may access NASS reports and products the following ways:

- All reports are available electronically, at no cost, on the NASS web site: <http://www.nass.usda.gov>
- Both national and state specific reports are available via a free e-mail subscription. To set-up this free subscription, visit <http://www.nass.usda.gov> and in the “Receive NASS Updates” box under “Receive reports by Email,” click on “National” or “State” to select the reports you would like to receive.
- Printed reports may be purchased from the National Technical Information Service (NTIS) by calling toll-free (800) 999-6779, or (703) 605-6220 if calling from outside the United States or Canada. Accepted methods of payment are Visa, MasterCard, check, or money order.

For more information on NASS surveys and reports, call the NASS Agricultural Statistics Hotline at (800) 727-9540, 7:30 a.m. to 4:00 p.m. ET, or e-mail: nass@nass.usda.gov.

The United States Department of Agriculture (USDA) prohibits discrimination in all its programs and activities on the basis of race, color, national origin, age, disability, and where applicable, sex, marital status, familial status, parental status, religion, sexual orientation, genetic information, political beliefs, reprisal, or because all or a part of an individual's income is derived from any public assistance program. (Not all prohibited bases apply to all programs.) Persons with disabilities who require alternative means for communication of program information (Braille, large print, audiotape, etc.) should contact USDA's TARGET Center at (202) 720-2600 (voice and TDD).

To file a complaint of discrimination, write to USDA, Director, Office of Civil Rights, 1400 Independence Avenue, S.W., Washington, D.C. 20250-9410, or call (800) 795-3272 (voice) or (202) 720-6382 (TDD). USDA is an equal opportunity provider and employer.