



# Cattle on Feed

ISSN: 1948-9080

---

Released September 17, 2010, by the National Agricultural Statistics Service (NASS), Agricultural Statistics Board, United States Department of Agriculture (USDA).

## United States Cattle on Feed Up 3 Percent

**Cattle and calves on feed** for slaughter market in the United States for feedlots with capacity of 1,000 or more head totaled 10.2 million head on September 1, 2010. The inventory was 3 percent above September 1, 2009.

**Placements** in feedlots during August totaled 2.27 million, 7 percent above 2009. Net placements were 2.22 million head. During August, placements of cattle and calves weighing less than 600 pounds were 495,000, 600-699 pounds were 395,000, 700-799 pounds were 565,000, and 800 pounds and greater were 815,000.

**Marketings** of fed cattle during August totaled 1.92 million, 7 percent above 2009.

**Other disappearance** totaled 47,000 during August, 16 percent below 2009.

**Number of Cattle on Feed, Placements, Marketings, and Other Disappearance on 1,000+ Capacity Feedlots – United States: September 1, 2009 and 2010**

Item	Number		Percent of previous year
	2009	2010	
	(1,000 head)	(1,000 head)	(percent)
On feed August 1 .....	9,637	9,873	102
Placed on feed during August .....	2,119	2,270	107
Fed cattle marketed during August .....	1,800	1,923	107
Other disappearance during August .....	56	47	84
On feed September 1 .....	9,900	10,173	103

**Number of Cattle on Feed, Placements, Marketings, and Other Disappearance on 1,000+ Capacity Feedlots – United States: August 1, 2009 and 2010**

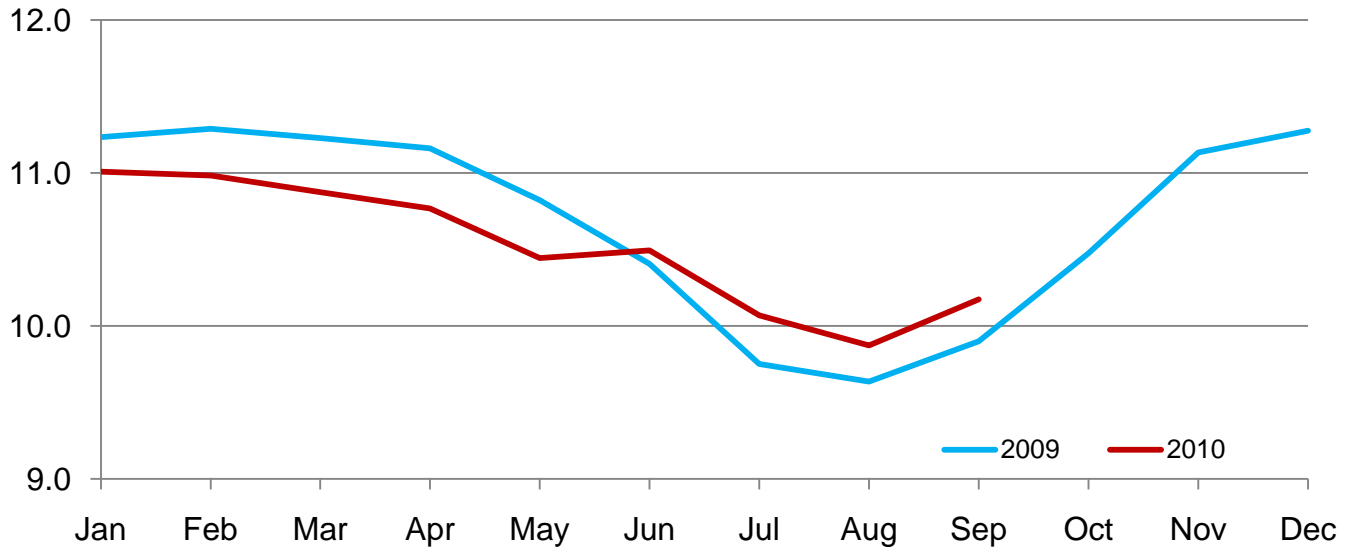
Item	Number		Percent of previous year
	2009	2010	
	(1,000 head)	(1,000 head)	(percent)
On feed July 1 .....	9,752	10,070	103
Placed on feed during July .....	1,863	1,754	94
Fed cattle marketed during July .....	1,935	1,903	98
Other disappearance during July .....	43	48	112
On feed August 1 .....	9,637	9,873	102

**Number of Cattle on Feed on 1,000+ Capacity Feedlots by Month – States and United States: 2009 and 2010**

State	September 1, 2009	August 1, 2010	September 1, 2010		
			Number	Percent of previous year	Percent of previous month
	(1,000 head)	(1,000 head)	(1,000 head)	(percent)	(percent)
Arizona .....	275	248	240	87	97
California .....	455	435	435	96	100
Colorado .....	860	890	890	103	100
Idaho .....	195	185	185	95	100
Iowa .....	510	560	560	110	100
Kansas .....	2,050	2,040	2,200	107	108
Nebraska .....	2,020	1,960	2,050	101	105
Oklahoma .....	325	335	355	109	106
South Dakota .....	185	200	195	105	98
Texas .....	2,530	2,520	2,550	101	101
Washington .....	140	161	167	119	104
Other States .....	355	339	346	97	102
United States .....	9,900	9,873	10,173	103	103

**United States Cattle on Feed  
1,000+ Capacity Feedlots**

Million head

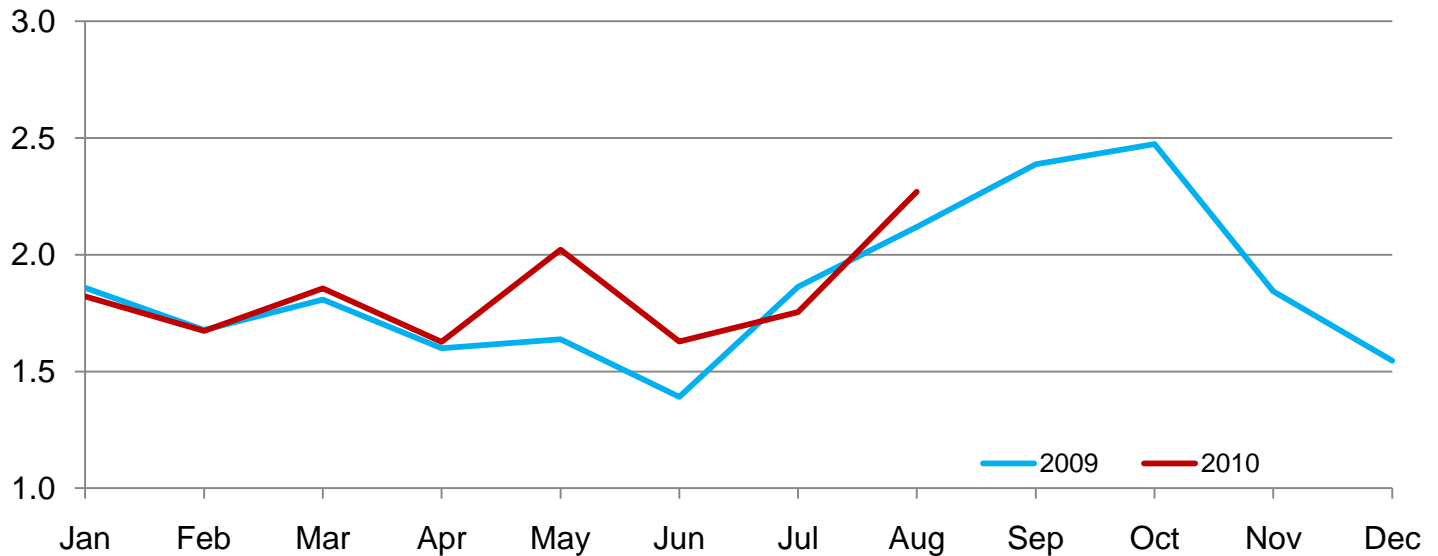


**Number of Cattle Placed on Feed on 1,000+ Capacity Feedlots by Month – States and United States: 2009 and 2010**

State	During August 2009	During July 2010	During August 2010		
			Number	Percent of previous year	Percent of previous month
	(1,000 head)	(1,000 head)	(1,000 head)	(percent)	(percent)
Arizona .....	28	21	20	71	95
California .....	53	51	55	104	108
Colorado .....	205	140	190	93	136
Idaho .....	42	31	46	110	148
Iowa .....	74	69	93	126	135
Kansas .....	550	500	610	111	122
Nebraska .....	460	370	480	104	130
Oklahoma .....	73	49	81	111	165
South Dakota .....	36	33	45	125	136
Texas .....	510	410	540	106	132
Washington .....	31	33	41	132	124
Other States .....	57	47	69	121	147
United States .....	2,119	1,754	2,270	107	129

**United States Cattle on Feed  
1,000+ Capacity Feedlots Number Placed**

Million Head



**Number of Cattle Placed on Feed by Weight Group on 1,000+ Capacity Feedlots by Month – States and United States: 2009 and 2010**

State	During August									
	Under 600 lbs		600-699 lbs		700-799 lbs		800+ lbs		Total	
	2009	2010	2009	2010	2009	2010	2009	2010	2009	2010
	(1,000 head)	(1,000 head)	(1,000 head)	(1,000 head)	(1,000 head)	(1,000 head)	(1,000 head)	(1,000 head)	(1,000 head)	(1,000 head)
Colorado .....	15	25	20	20	50	55	120	90	205	190
Kansas .....	60	90	100	115	175	200	215	205	550	610
Nebraska .....	60	55	80	80	100	100	220	245	460	480
Texas .....	200	215	140	120	110	120	60	85	510	540
Other States .....	100	110	55	60	79	90	160	190	394	450
United States .....	435	495	395	395	514	565	775	815	2,119	2,270

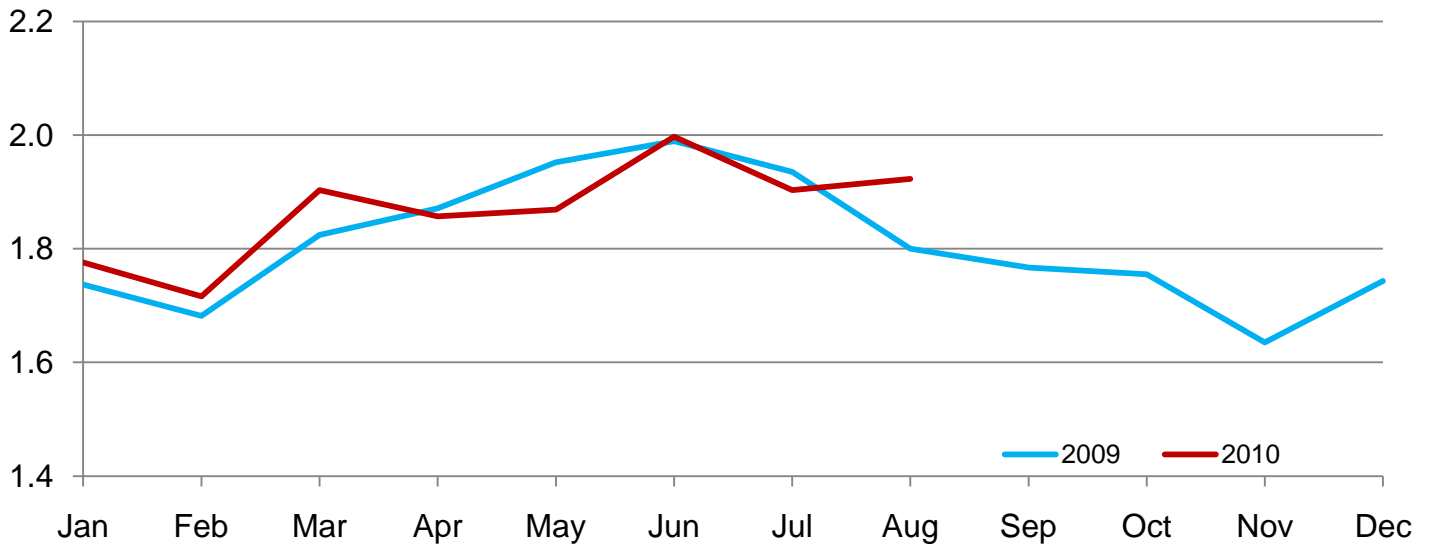
State	During July									
	Under 600 lbs		600-699 lbs		700-799 lbs		800+ lbs		Total	
	2009	2010	2009	2010	2009	2010	2009	2010	2009	2010
	(1,000 head)	(1,000 head)	(1,000 head)	(1,000 head)	(1,000 head)	(1,000 head)	(1,000 head)	(1,000 head)	(1,000 head)	(1,000 head)
Colorado .....	15	15	15	20	35	40	60	65	125	140
Kansas .....	80	75	90	90	150	165	160	170	480	500
Nebraska .....	60	50	80	70	95	90	175	160	410	370
Texas .....	200	190	125	75	105	85	65	60	495	410
Other States .....	100	85	55	50	73	69	125	130	353	334
United States .....	455	415	365	305	458	449	585	585	1,863	1,754

**Number of Cattle Marketed on 1,000+ Capacity Feedlots by Month – States and United States: 2009 and 2010**

State	During August 2009	During July 2010	During August 2010		
			Number	Percent of previous year	Percent of previous month
	(1,000 head)	(1,000 head)	(1,000 head)	(percent)	(percent)
Arizona .....	27	27	27	100	100
California .....	46	43	52	113	121
Colorado .....	190	165	185	97	112
Idaho .....	40	45	45	113	100
Iowa .....	73	77	91	125	118
Kansas .....	405	460	440	109	96
Nebraska .....	350	400	380	109	95
Oklahoma .....	56	63	60	107	95
South Dakota .....	40	47	49	123	104
Texas .....	480	470	500	104	106
Washington .....	28	38	34	121	89
Other States .....	65	68	60	92	88
United States .....	1,800	1,903	1,923	107	101

# United States Cattle on Feed 1,000+ Capacity Feedlots Number Marketed

Million Head



## Other Disappearance on 1,000+ Capacity Feedlots by Month – States and United States: 2009 and 2010

State	During August 2009 (1,000 head)	During July 2010 (1,000 head)	During August 2010		
			Number (1,000 head)	Percent of previous year (percent)	Percent of previous month (percent)
Arizona .....	1	1	1	100	100
California .....	2	3	3	150	100
Colorado .....	5	5	5	100	100
Idaho .....	2	1	1	50	100
Iowa .....	1	2	2	200	100
Kansas .....	15	10	10	67	100
Nebraska .....	10	10	10	100	100
Oklahoma .....	2	1	1	50	100
South Dakota .....	1	1	1	100	100
Texas .....	10	10	10	100	100
Washington .....	1	1	1	100	100
Other States .....	6	3	2	33	67
United States .....	56	48	47	84	98

## Terms and Definitions of Cattle on Feed Estimates

**Cattle on feed** are animals being fed a ration of grain, silage, hay and/or protein supplement for slaughter market that are expected to produce a carcass that will grade select or better. It excludes cattle being "backgrounded only" for later sale as feeders or later placement in another feedlot.

**Placements** are cattle put into a feedlot, fed a ration which will produce a carcass that will grade select or better, and are intended for the slaughter market.

**Marketings** are cattle shipped out of feedlots to a slaughter market.

**Other disappearance** includes death loss, movement from feedlots to pasture, and shipments to other feedlots for further feeding.

## Reliability of Cattle on Feed Estimates

**Survey Procedures:** During January and July all known feedlots in the United States with capacity of 1,000 or more head are surveyed to provide data for cattle on feed estimates. During the other months, all known feedlots from 16 States are surveyed. The 16 States account for 98 percent of the cattle on feed in feedlots with capacity of 1,000 or more head. Individual State estimates are published monthly for 11 of the 16 States. Data collected from the remaining 5 States are used to establish the "Other States" estimates. These 5 States include IL, MN, NM, OR, and WY. The "Other States" category represents all cattle on feed with a capacity of 1,000 or more head for the rest of the United States.

**Estimating Procedures:** These cattle on feed estimates were prepared by the Agricultural Statistics Board after reviewing recommendations and analysis submitted by each State office. Regional and State survey data were reviewed for reasonableness with each other and with estimates from the previous month when establishing the current estimates.

**Revision Policy:** Revisions to previous estimates are made to improve month to month relationships. Estimates for the previous month are subject to revision in all States each month when current estimates are made. In February, all monthly estimates for the previous year, and the number of feedlots and annual marketings from two years ago are reviewed and subject to revisions. The reviews are primarily based on slaughter data, state check-off or brand data, and any other data that may have been received after the original estimate was made. Estimates will also be reviewed after data from the Census of Agriculture are available. No revisions will be made after that date and estimates become final.

**Reliability:** Since all 1,000+ capacity cattle on feed operators in every State are not included in the monthly survey, survey estimates are subject to sampling variability. Survey results are also subject to non-sampling errors such as omissions, duplications, and mistakes in reporting, recording, and processing the data. The effects of these errors cannot be measured directly. They are minimized through rigid quality controls in the data collection process and through a careful review of all reported data for consistency and reasonableness.

To assist users in evaluating the reliability of estimates in this report, the "**Root Mean Square Error**" is shown for selected items in the table on the following page. The "Root Mean Square Error" is a statistical measure based on past performance and is computed using the differences between first and latest estimates. The "Root Mean Square Error" for cattle on feed inventory estimates over the past 24 months is 0.05 percent. This means that chances are 2 out of 3 that the final estimate will not be above or below the current estimate of 10.2 million head by more than 0.05 percent. Chances are 9 out of 10 that the difference will not exceed 0.10 percent.

The table on the following page shows a 24 month record of the range of differences between first and latest estimates for selected items. Using estimates of number on feed as an example, changes between the first estimate and the latest estimate during the past 24 months have averaged 3,000 head, ranging from 0 to 18,000 head. During this period the initial estimate has been above the latest estimate 6 times and has been below the latest estimate 4 times. This does not imply that the initial estimate is likely to understate or overstate final inventory.

## Reliability of Monthly Cattle on Feed Estimates

[Based on data for the past 24 months]

Item	Root mean square error	90 percent confidence level	Difference between first and latest estimate				
			Average	Smallest	Largest	Years	
						Below latest	Above latest
	(percent)	(percent)	(1,000)	(1,000)	(1,000)	(number)	(number)
Number on feed .....	0.05	0.10	3	0	18	4	6
Placements .....	0.16	0.30	1	0	9	4	4
Marketings .....	0.29	0.50	2	0	21	7	3

## Information Contacts

Listed below are the commodity specialists in the Livestock Branch of the National Agricultural Statistics Service to contact for additional information. E-mail inquiries may be sent to [nass@nass.usda.gov](mailto:nass@nass.usda.gov)

Dan Kerestes, Chief, Livestock Branch .....	(202) 720-3570
Scott Hollis, Head, Livestock Section .....	(202) 690-2424
Jim Collom – Dairy Products .....	(202) 690-3236
Joe Gaynor – Dairy Products Prices .....	(202) 690-2168
Jason Hardegree – Cattle, Cattle on Feed .....	(202) 720-3040
Sherry Bertramsen – Livestock Slaughter .....	(515) 284-4340
Everett Olbert – Sheep and Goats .....	(202) 720-4751
Mike Miller – Milk Production and Milk Cows .....	(202) 720-3278
Nick Streff – Hogs and Pigs .....	(202) 720-3106



## Access to NASS Reports

For your convenience, you may access NASS reports and products the following ways:

- All reports are available electronically, at no cost, on the NASS web site: <http://www.nass.usda.gov>
- Both national and state specific reports are available via a free e-mail subscription. To set-up this free subscription, visit <http://www.nass.usda.gov> and in the “Receive NASS Updates” box under “Receive reports by Email,” click on “National” or “State” to select the reports you would like to receive.
- Printed reports may be purchased from the National Technical Information Service (NTIS) by calling toll-free (800) 999-6779, or (703) 605-6220 if calling from outside the United States or Canada. Accepted methods of payment are Visa, MasterCard, check, or money order.

For more information on NASS surveys and reports, call the NASS Agricultural Statistics Hotline at (800) 727-9540, 7:30 a.m. to 4:00 p.m. ET, or e-mail: [nass@nass.usda.gov](mailto:nass@nass.usda.gov).

The United States Department of Agriculture (USDA) prohibits discrimination in all its programs and activities on the basis of race, color, national origin, age, disability, and where applicable, sex, marital status, familial status, parental status, religion, sexual orientation, genetic information, political beliefs, reprisal, or because all or a part of an individual's income is derived from any public assistance program. (Not all prohibited bases apply to all programs.) Persons with disabilities who require alternative means for communication of program information (Braille, large print, audiotape, etc.) should contact USDA's TARGET Center at (202) 720-2600 (voice and TDD).

To file a complaint of discrimination, write to USDA, Director, Office of Civil Rights, 1400 Independence Avenue, S.W., Washington, D.C. 20250-9410, or call (800) 795-3272 (voice) or (202) 720-6382 (TDD). USDA is an equal opportunity provider and employer.

**USDA Data Users' Meeting**  
**Monday October 25, 2010**

**Crowne Plaza Chicago-Metro**  
**Chicago, Illinois 60661**  
**312-829-5000**

The USDA's National Agricultural Statistics Service will be organizing an open forum for data users. The purpose will be to provide updates on pending changes in the various statistical and information programs and seek comments and input from data users. Other USDA agencies to be represented will include the Agricultural Marketing Service, the Economic Research Service, the Foreign Agricultural Service, and the World Agricultural Outlook Board. The Foreign Trade Division from the Census Bureau will also be included in the meeting.

For registration details or additional information for the Data Users' Meeting, see the NASS homepage at <http://www.nass.usda.gov/meeting/> or contact Marie Jordan (NASS) at 202-690-8141 or at [marie\\_jordan@nass.usda.gov](mailto:marie_jordan@nass.usda.gov).

This Data Users' Meeting precedes an Industry Outlook Meeting that will be held at the same location on Tuesday October 26, 2010. The Outlook meeting brings together analysts from various commodity sectors to discuss the outlook situation. For registration details or additional information for the Industry Outlook Meeting, see the Livestock and Marketing Information Center (LMIC) homepage at <http://www.lmic.info/> or contact Erica Rosa 303-236-0461 at [rosa@lmic.info](mailto:rosa@lmic.info) or Laura Lahr 303-236-0464 at [lahr@lmic.info](mailto:lahr@lmic.info).