



Cattle on Feed

ISSN: 1948-9080

Released October 22, 2010, by the National Agricultural Statistics Service (NASS), Agricultural Statistics Board, United States Department of Agriculture (USDA).

U.S. Cattle on Feed Up 3 Percent

Cattle and calves on feed for slaughter market in the United States for feedlots with capacity of 1,000 or more head totaled 10.8 million head on October 1, 2010. The inventory was 3 percent above October 1, 2009. The inventory included 6.60 million steers and steer calves, up 3 percent from the previous year. This group accounted for 61 percent of the total inventory. Heifers and heifer calves accounted for 4.12 million head, also up 3 percent from 2009.

Placements in feedlots during September totaled 2.46 million, 3 percent above 2009. Net placements were 2.41 million head. During September, placements of cattle and calves weighing less than 600 pounds were 510,000, 600-699 pounds were 455,000, 700-799 pounds were 602,000, and 800 pounds and greater were 895,000.

Marketings of fed cattle during September totaled 1.80 million, 2 percent above 2009.

Other disappearance totaled 54,000 during September, 15 percent above 2009.

Number of Cattle on Feed, Placements, Marketings, and Other Disappearance on 1,000+ Capacity Feedlots – United States: October 1, 2009 and 2010

Item	Number		Percent of previous year
	2009	2010	
	(1,000 head)	(1,000 head)	(percent)
On feed September 1	9,900	10,173	103
Placed on feed during September	2,388	2,462	103
Fed cattle marketed during September	1,767	1,802	102
Other disappearance during September	47	54	115
On feed October 1	10,474	10,779	103

Number of Cattle on Feed, Placements, Marketings, and Other Disappearance on 1,000+ Capacity Feedlots – United States: September 1, 2009 and 2010

Item	Number		Percent of previous year
	2009	2010	
	(1,000 head)	(1,000 head)	(percent)
On feed August 1	9,637	9,873	102
Placed on feed during August	2,119	2,270	107
Fed cattle marketed during August	1,800	1,923	107
Other disappearance during August	56	47	84
On feed September 1	9,900	10,173	103

Number on Feed by Class on 1,000+ Capacity Feedlots – United States: October 1, 2009 and 2010

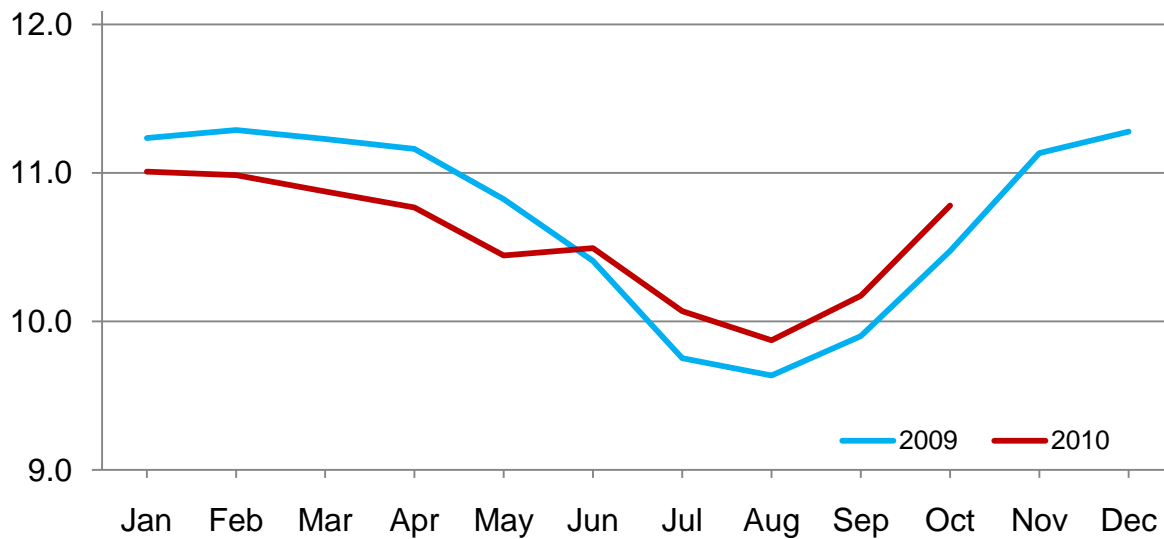
Item	Number		Percent of previous year
	2009	2010	
	(1,000 Head)	(1,000 Head)	(percent)
Class on Feed October 1			
Steers and Steer Calves	6,416	6,601	103
Heifers and Heifer Calves	4,012	4,123	103
Cows and Bulls	46	55	120

Number of Cattle on Feed on 1,000+ Capacity Feedlots by Month – States and United States: 2009 and 2010

State	October 1, 2009	September 1, 2010	October 1, 2010		
			Number	Percent of previous year	Percent of previous month
	(1,000 head)	(1,000 head)	(1,000 head)	(percent)	(percent)
Arizona	275	240	240	87	100
California	465	435	445	96	102
Colorado	960	890	1,000	104	112
Idaho	205	185	200	98	108
Iowa	520	560	570	110	102
Kansas	2,220	2,200	2,330	105	106
Nebraska	2,170	2,050	2,220	102	108
Oklahoma	355	355	370	104	104
South Dakota	195	195	205	105	105
Texas	2,600	2,550	2,640	102	104
Washington	147	167	177	120	106
Other States	362	346	382	106	110
United States	10,474	10,173	10,779	103	106

**United States Cattle on Feed
1,000+ Capacity Feedlots**

Million Head

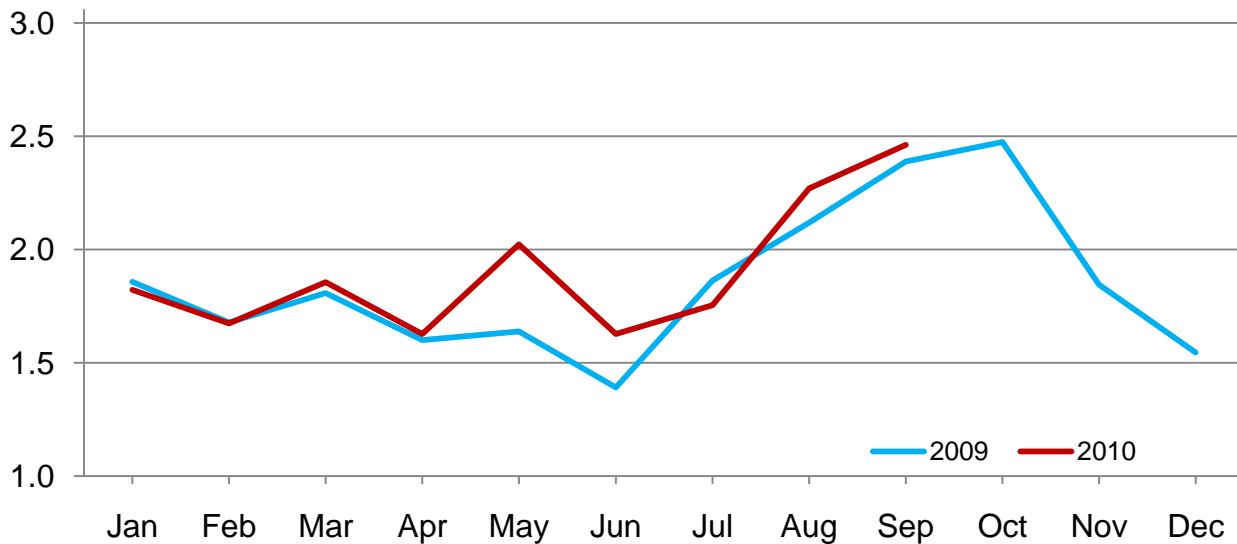


Number of Cattle Placed on Feed on 1,000+ Capacity Feedlots by Month – States and United States: 2009 and 2010

State	During September 2009 (1,000 head)	During August 2010 (1,000 head)	During September 2010		
			Number (1,000 head)	Percent of previous year (percent)	Percent of previous month (percent)
Arizona	27	20	22	81	110
California	56	55	55	98	100
Colorado	260	190	295	113	155
Idaho	53	46	57	108	124
Iowa	105	93	122	116	131
Kansas	510	610	510	100	84
Nebraska	550	480	540	98	113
Oklahoma	80	81	87	109	107
South Dakota	52	45	57	110	127
Texas	570	540	580	102	107
Washington	35	41	44	126	107
Other States	90	69	93	103	135
United States	2,388	2,270	2,462	103	108

**United States Cattle on Feed
1,000+ Capacity Feedlots Number Placed**

Million Head



Number of Cattle Placed on Feed by Weight Group on 1,000+ Capacity Feedlots by Month – States and United States: 2009 and 2010

State	During September									
	Under 600 lbs		600-699 lbs		700-799 lbs		800+ lbs		Total	
	2009	2010	2009	2010	2009	2010	2009	2010	2009	2010
	(1,000 head)	(1,000 head)	(1,000 head)	(1,000 head)	(1,000 head)	(1,000 head)	(1,000 head)	(1,000 head)	(1,000 head)	(1,000 head)
Colorado	20	35	25	35	65	65	150	160	260	295
Kansas	85	75	115	110	155	160	155	165	510	510
Nebraska	65	75	90	80	120	130	275	255	550	540
Texas	175	190	160	165	160	145	75	80	570	580
Other States	145	135	60	65	93	102	200	235	498	537
United States	490	510	450	455	593	602	855	895	2,388	2,462

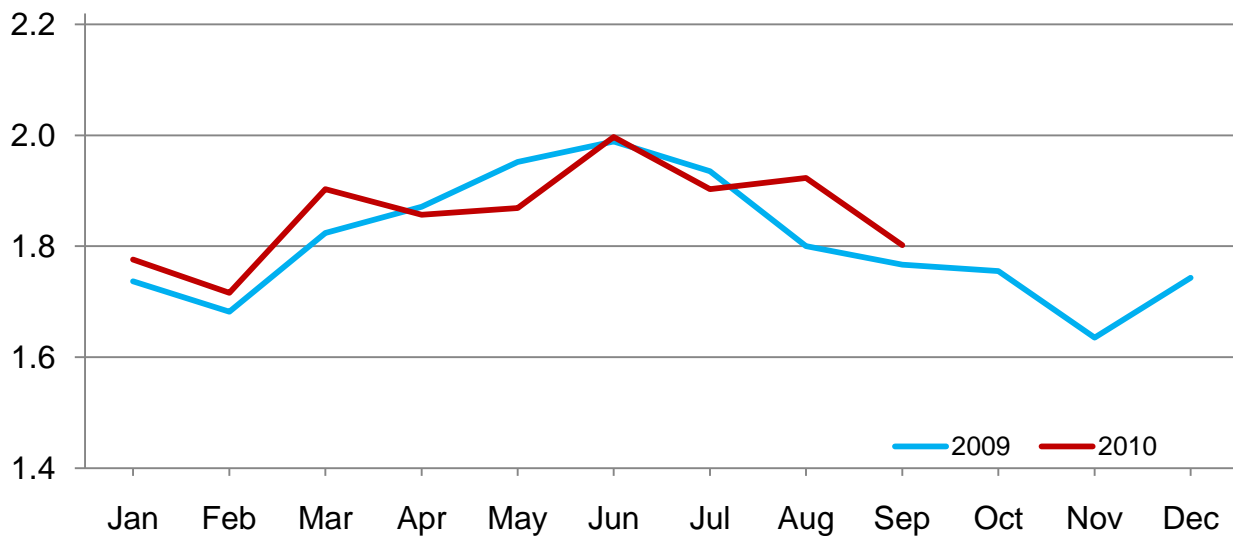
State	During August									
	Under 600 lbs		600-699 lbs		700-799 lbs		800+ lbs		Total	
	2009	2010	2009	2010	2009	2010	2009	2010	2009	2010
	(1,000 head)	(1,000 head)	(1,000 head)	(1,000 head)	(1,000 head)	(1,000 head)	(1,000 head)	(1,000 head)	(1,000 head)	(1,000 head)
Colorado	15	25	20	20	50	55	120	90	205	190
Kansas	60	90	100	115	175	200	215	205	550	610
Nebraska	60	55	80	80	100	100	220	245	460	480
Texas	200	215	140	120	110	120	60	85	510	540
Other States	100	110	55	60	79	90	160	190	394	450
United States	435	495	395	395	514	565	775	815	2,119	2,270

Number of Cattle Marketed on 1,000+ Capacity Feedlots by Month – States and United States: 2009 and 2010

State	During September 2009	During August 2010	During September 2010		
			Number	Percent of previous year	Percent of previous month
	(1,000 head)	(1,000 head)	(1,000 head)	(percent)	(percent)
Arizona	26	27	21	81	78
California	44	52	43	98	83
Colorado	155	185	180	116	97
Idaho	42	45	41	98	91
Iowa	94	91	108	115	119
Kansas	330	440	370	112	84
Nebraska	395	380	360	91	95
Oklahoma	48	60	71	148	118
South Dakota	41	49	45	110	92
Texas	485	500	475	98	95
Washington	27	34	33	122	97
Other States	80	60	55	69	92
United States	1,767	1,923	1,802	102	94

United States Cattle on Feed 1,000+ Capacity Feedlots Number Marketed

Million Head



Other Disappearance on 1,000+ Capacity Feedlots by Month – States and United States: 2009 and 2010

State	During September 2009 (1,000 head)	During August 2010 (1,000 head)	During September 2010		
			Number (1,000 head)	Percent of previous year (percent)	Percent of previous month (percent)
Arizona	1	1	1	100	100
California	2	3	2	100	67
Colorado	5	5	5	100	100
Idaho	1	1	1	100	100
Iowa	1	2	4	400	200
Kansas	10	10	10	100	100
Nebraska	5	10	10	200	100
Oklahoma	2	1	1	50	100
South Dakota	1	1	2	200	200
Texas	15	10	15	100	150
Washington	1	1	1	100	100
Other States	3	2	2	67	100
United States	47	47	54	115	115

Number on Feed by Class on 1,000+ Capacity Feedlots by Quarter – States and United States: 2009 and 2010

State	Steers and Steer Calves			Heifers and Heifer Calves			Cows and Bulls		
	Oct 1, 2009	Jul 1, 2010	Oct 1, 2010	Oct 1, 2009	Jul 1, 2010	Oct 1, 2010	Oct 1, 2009	Jul 1, 2010	Oct 1, 2010
	(1,000 Head)	(1,000 Head)	(1,000 Head)	(1,000 Head)	(1,000 Head)	(1,000 Head)	(1,000 Head)	(1,000 Head)	(1,000 Head)
Arizona	272	254	239	1	1	1	2	0	0
California	410	425	355	55	5	90	0	0	0
Colorado	650	635	705	305	280	290	5	5	5
Idaho	113	115	116	91	77	78	1	8	6
Iowa	365	400	395	155	170	175	0	0	0
Kansas	1,210	1,030	1,230	1,005	970	1,090	5	10	10
Nebraska	1,240	1,210	1,340	915	785	865	15	5	15
Oklahoma	215	185	205	140	165	165	0	0	0
South Dakota	100	106	97	81	91	92	14	18	16
Texas	1,520	1,550	1,560	1,079	1,039	1,079	1	1	1
Washington	87	97	105	59	69	71	1	1	1
Other States	234	247	254	126	114	127	2	2	1
United States	6,416	6,254	6,601	4,012	3,766	4,123	46	50	55

Terms and Definitions of Cattle on Feed Estimates

Cattle on feed are animals being fed a ration of grain, silage, hay and/or protein supplement for slaughter market that are expected to produce a carcass that will grade select or better. It excludes cattle being "backgrounded only" for later sale as feeders or later placement in another feedlot.

Placements are cattle put into a feedlot, fed a ration which will produce a carcass that will grade select or better, and are intended for the slaughter market.

Marketings are cattle shipped out of feedlots to a slaughter market.

Other disappearance includes death loss, movement from feedlots to pasture, and shipments to other feedlots for further feeding.

Reliability of Cattle on Feed Estimates

Survey Procedures: During January and July all known feedlots in the United States with capacity of 1,000 or more head are surveyed to provide data for cattle on feed estimates. During the other months, all known feedlots from 16 States are surveyed. The 16 States account for 98 percent of the cattle on feed in feedlots with capacity of 1,000 or more head. Individual State estimates are published monthly for 11 of the 16 States. Data collected from the remaining 5 States are used to establish the "Other States" estimates. These 5 States include IL, MN, NM, OR, and WY. The "Other States" category represents all cattle on feed with a capacity of 1,000 or more head for the rest of the United States.

Estimating Procedures: These cattle on feed estimates were prepared by the Agricultural Statistics Board after reviewing recommendations and analysis submitted by each State office. Regional and State survey data were reviewed for reasonableness with each other and with estimates from the previous month when establishing the current estimates.

Revision Policy: Revisions to previous estimates are made to improve month to month relationships. Estimates for the previous month are subject to revision in all States each month when current estimates are made. In February, all monthly estimates for the previous year, and the number of feedlots and annual marketings from two years ago are reviewed and subject to revisions. The reviews are primarily based on slaughter data, state check-off or brand data, and any other data that may have been received after the original estimate was made. Estimates will also be reviewed after data from the Census of Agriculture are available. No revisions will be made after that date and estimates become final.

Reliability: Since all 1,000+ capacity cattle on feed operators in every State are not included in the monthly survey, survey estimates are subject to sampling variability. Survey results are also subject to non-sampling errors such as omissions, duplications, and mistakes in reporting, recording, and processing the data. The effects of these errors cannot be measured directly. They are minimized through rigid quality controls in the data collection process and through a careful review of all reported data for consistency and reasonableness.

To assist users in evaluating the reliability of estimates in this report, the "**Root Mean Square Error**" is shown for selected items in the table on the following page. The "Root Mean Square Error" is a statistical measure based on past performance and is computed using the differences between first and latest estimates. The "Root Mean Square Error" for cattle on feed inventory estimates over the past 24 months is 0.05 percent. This means that chances are 2 out of 3 that the final estimate will not be above or below the current estimate of 10.8 million head by more than 0.05 percent. Chances are 9 out of 10 that the difference will not exceed 0.10 percent.

The table on the following page shows a 24 month record of the range of differences between first and latest estimates for selected items. Using estimates of number on feed as an example, changes between the first estimate and the latest estimate during the past 24 months have averaged 3,000 head, ranging from 0 to 18,000 head. During this period the initial estimate has been above the latest estimate 6 times and has been below the latest estimate 4 times. This does not imply that the initial estimate is likely to understate or overstate final inventory.

Reliability of Monthly Cattle on Feed Estimates

[Based on data for the past 24 months]

Item	Root mean square error	90 percent confidence level	Difference between first and latest estimate				
			Average	Smallest	Largest	Years	
						Below latest	Above latest
	(percent)	(percent)	(1,000)	(1,000)	(1,000)	(number)	(number)
Number on feed	0.05	0.10	3	0	18	4	6
Placements	0.16	0.30	1	0	9	4	4
Marketings	0.29	0.50	2	0	21	7	3

Information Contacts

Listed below are the commodity specialists in the Livestock Branch of the National Agricultural Statistics Service to contact for additional information. E-mail inquiries may be sent to nass@nass.usda.gov

Dan Kerestes, Chief, Livestock Branch	(202) 720-3570
Scott Hollis, Head, Livestock Section	(202) 690-2424
Lorie Warren – Dairy Products	(202) 690-3236
Joe Gaynor – Dairy Products Prices	(202) 690-2168
Jason Hardegree – Cattle, Cattle on Feed	(202) 720-3040
Sherry Bertramsen – Livestock Slaughter	(515) 284-4340
Everett Olbert – Sheep and Goats	(202) 720-4751
Mike Miller – Milk Production and Milk Cows	(202) 720-3278
Nick Streff – Hogs and Pigs	(202) 720-3106

Access to NASS Reports

For your convenience, you may access NASS reports and products the following ways:

- All reports are available electronically, at no cost, on the NASS web site: <http://www.nass.usda.gov>
- Both national and state specific reports are available via a free e-mail subscription. To set-up this free subscription, visit <http://www.nass.usda.gov> and in the “Receive NASS Updates” box under “Receive reports by Email,” click on “National” or “State” to select the reports you would like to receive.
- Printed reports may be purchased from the National Technical Information Service (NTIS) by calling toll-free (800) 999-6779, or (703) 605-6220 if calling from outside the United States or Canada. Accepted methods of payment are Visa, MasterCard, check, or money order.

For more information on NASS surveys and reports, call the NASS Agricultural Statistics Hotline at (800) 727-9540, 7:30 a.m. to 4:00 p.m. ET, or e-mail: nass@nass.usda.gov.

The United States Department of Agriculture (USDA) prohibits discrimination in all its programs and activities on the basis of race, color, national origin, age, disability, and where applicable, sex, marital status, familial status, parental status, religion, sexual orientation, political beliefs, genetic information, reprisal, or because all or a part of an individual's income is derived from any public assistance program. (Not all prohibited bases apply to all programs.) Persons with disabilities who require alternative means for communication of program information (Braille, large print, audiotape, etc.) should contact USDA's TARGET Center at (202) 720-2600 (voice and TDD).

To file a complaint of discrimination, write to USDA, Assistant Secretary for Civil Rights, Office of the Assistant Secretary for Civil Rights, 1400 Independence Avenue, S.W., Stop 9410, Washington, DC 20250-9410, or call toll-free at (866) 632-9992 (English) or (800) 877-8339 (TDD) or (866) 377-8642 (English Federal-relay) or (800) 845-6136 (Spanish Federal-relay). USDA is an equal opportunity provider and employer.

USDA Data Users' Meeting
Monday October 25, 2010

Crowne Plaza Chicago-Metro
Chicago, Illinois 60661
312-829-5000

The USDA's National Agricultural Statistics Service will be organizing an open forum for data users. The purpose will be to provide updates on pending changes in the various statistical and information programs and seek comments and input from data users. Other USDA agencies to be represented will include the Agricultural Marketing Service, the Economic Research Service, the Foreign Agricultural Service, and the World Agricultural Outlook Board. The Foreign Trade Division from the Census Bureau will also be included in the meeting.

For registration details or additional information for the Data Users' Meeting, see the NASS homepage at <http://www.nass.usda.gov/meeting/> or contact Marie Jordan (NASS) at 202-690-8141 or at marie_jordan@nass.usda.gov.

This Data Users' Meeting precedes an Industry Outlook Meeting that will be held at the same location on Tuesday October 26, 2010. The Outlook meeting brings together analysts from various commodity sectors to discuss the outlook situation. For registration details or additional information for the Industry Outlook Meeting, see the Livestock and Marketing Information Center (LMIC) homepage at <http://www.lmic.info/> or contact Erica Rosa 303-236-0461 at rosa@lmic.info or Laura Lahr 303-236-0464 at lahr@lmic.info.