



Cattle on Feed

ISSN: 1948-9080

Released November 19, 2010, by the National Agricultural Statistics Service (NASS), Agricultural Statistics Board, United States Department of Agriculture (USDA).

United States Cattle on Feed Up 3 Percent

Cattle and calves on feed for slaughter market in the United States for feedlots with capacity of 1,000 or more head totaled 11.5 million head on November 1, 2010. The inventory was 3 percent above November 1, 2009.

Placements in feedlots during October totaled 2.50 million, 1 percent above 2009. Net placements were 2.44 million head. During October, placements of cattle and calves weighing less than 600 pounds were 725,000, 600-699 pounds were 640,000, 700-799 pounds were 514,000, and 800 pounds and greater were 625,000.

Marketings of fed cattle during October totaled 1.73 million, 1 percent below 2009. This is the second lowest fed cattle marketings for the month of October since the series began in 1996.

Other disappearance totaled 62,000 during October, 5 percent above 2009.

Number of Cattle on Feed, Placements, Marketings, and Other Disappearance on 1,000+ Capacity Feedlots – United States: November 1, 2009 and 2010

Item	Number		Percent of previous year
	2009	2010	
	(1,000 head)	(1,000 head)	(percent)
On feed October 1	10,474	10,779	103
Placed on feed during October	2,474	2,504	101
Fed cattle marketed during October	1,755	1,734	99
Other disappearance during October	59	62	105
On feed November 1	11,134	11,487	103

Number of Cattle on Feed, Placements, Marketings, and Other Disappearance on 1,000+ Capacity Feedlots – United States: October 1, 2009 and 2010

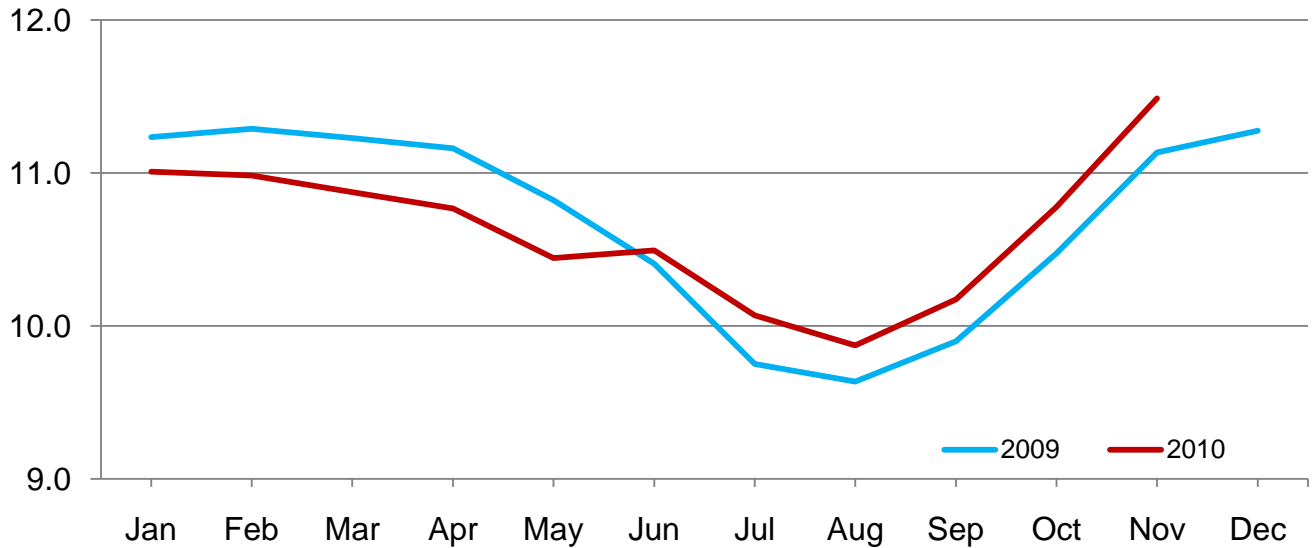
Item	Number		Percent of previous year
	2009	2010	
	(1,000 head)	(1,000 head)	(percent)
On feed September 1	9,900	10,173	103
Placed on feed during September	2,388	2,462	103
Fed cattle marketed during September	1,767	1,802	102
Other disappearance during September	47	54	115
On feed October 1	10,474	10,779	103

Number of Cattle on Feed on 1,000+ Capacity Feedlots by Month – States and United States: 2009 and 2010

State	November 1, 2009	October 1, 2010	November 1, 2010		
			Number	Percent of previous year	Percent of previous month
	(1,000 head)	(1,000 head)	(1,000 head)	(percent)	(percent)
Arizona	279	240	251	90	105
California	470	445	460	98	103
Colorado	1,040	1,000	1,090	105	109
Idaho	210	200	215	102	108
Iowa	540	570	610	113	107
Kansas	2,330	2,330	2,400	103	103
Nebraska	2,400	2,220	2,420	101	109
Oklahoma	375	370	385	103	104
South Dakota	205	205	230	112	112
Texas	2,730	2,640	2,820	103	107
Washington	155	177	192	124	108
Other States	400	382	414	104	108
United States	11,134	10,779	11,487	103	107

**United States Cattle on Feed
1,000+ Capacity Feedlots**

Million head

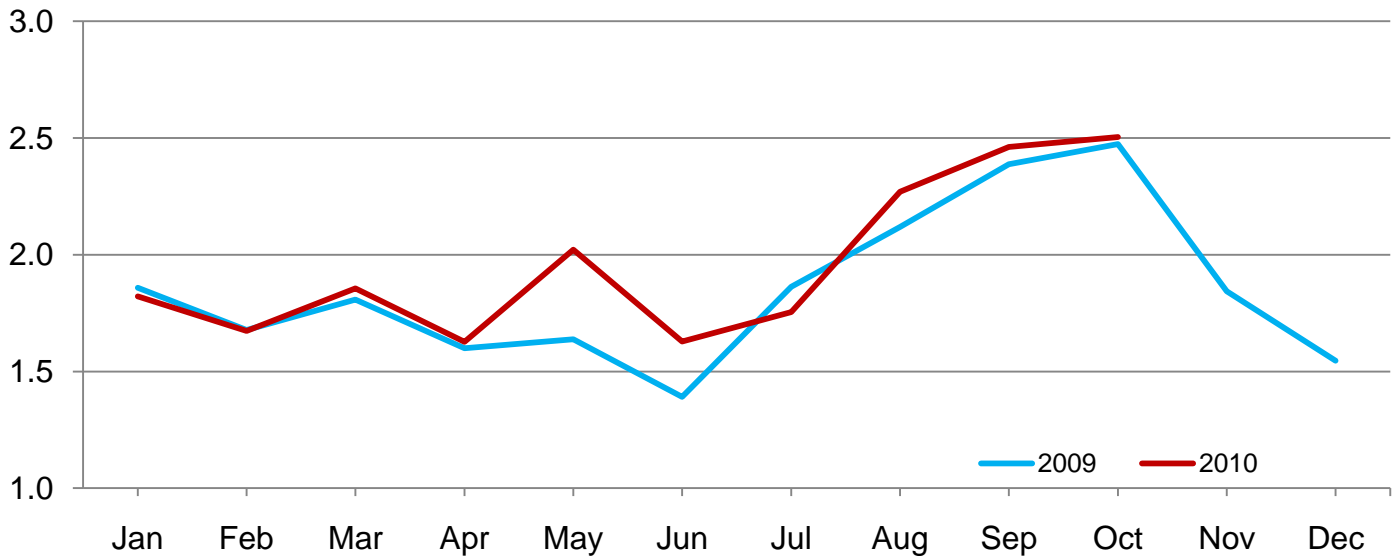


Number of Cattle Placed on Feed on 1,000+ Capacity Feedlots by Month – States and United States: 2009 and 2010

State	During October 2009 (1,000 head)	During September 2010 (1,000 head)	During October 2010		
			Number (1,000 head)	Percent of previous year (percent)	Percent of previous month (percent)
Arizona	29	22	32	110	145
California	57	55	65	114	118
Colorado	245	295	270	110	92
Idaho	50	57	53	106	93
Iowa	123	122	142	115	116
Kansas	465	510	435	94	85
Nebraska	620	540	580	94	107
Oklahoma	83	87	80	96	92
South Dakota	65	57	70	108	123
Texas	610	580	640	105	110
Washington	38	44	52	137	118
Other States	89	93	85	96	91
United States	2,474	2,462	2,504	101	102

**United States Cattle on Feed
1,000+ Capacity Feedlots Number Placed**

Million Head



Number of Cattle Placed on Feed by Weight Group on 1,000+ Capacity Feedlots by Month – States and United States: 2009 and 2010

State	During October									
	Under 600 lbs		600-699 lbs		700-799 lbs		800+ lbs		Total	
	2009	2010	2009	2010	2009	2010	2009	2010	2009	2010
	(1,000 head)	(1,000 head)	(1,000 head)	(1,000 head)	(1,000 head)	(1,000 head)	(1,000 head)	(1,000 head)	(1,000 head)	(1,000 head)
Colorado	50	55	45	55	60	60	90	100	245	270
Kansas	85	90	120	115	150	125	110	105	465	435
Nebraska	160	170	175	160	95	90	190	160	620	580
Texas	150	220	180	190	180	145	100	85	610	640
Other States	170	190	125	120	94	94	145	175	534	579
United States	615	725	645	640	579	514	635	625	2,474	2,504

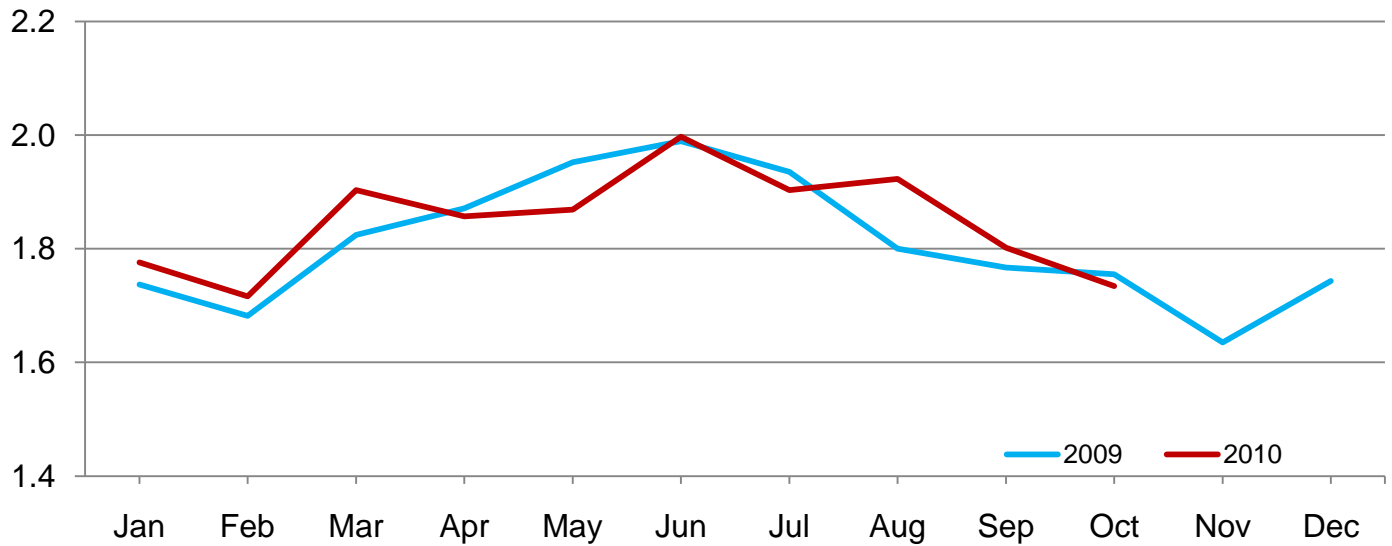
State	During September									
	Under 600 lbs		600-699 lbs		700-799 lbs		800+ lbs		Total	
	2009	2010	2009	2010	2009	2010	2009	2010	2009	2010
	(1,000 head)	(1,000 head)	(1,000 head)	(1,000 head)	(1,000 head)	(1,000 head)	(1,000 head)	(1,000 head)	(1,000 head)	(1,000 head)
Colorado	20	35	25	35	65	65	150	160	260	295
Kansas	85	75	115	110	155	160	155	165	510	510
Nebraska	65	75	90	80	120	130	275	255	550	540
Texas	175	190	160	165	160	145	75	80	570	580
Other States	145	135	60	65	93	102	200	235	498	537
United States	490	510	450	455	593	602	855	895	2,388	2,462

Number of Cattle Marketed on 1,000+ Capacity Feedlots by Month – States and United States: 2009 and 2010

State	During October 2009	During September 2010	During October 2010		
			Number	Percent of previous year	Percent of previous month
	(1,000 head)	(1,000 head)	(1,000 head)	(percent)	(percent)
Arizona	24	21	20	83	95
California	50	43	48	96	112
Colorado	160	180	170	106	94
Idaho	44	41	37	84	90
Iowa	100	108	100	100	93
Kansas	340	370	350	103	95
Nebraska	380	360	370	97	103
Oklahoma	60	71	63	105	89
South Dakota	54	45	44	81	98
Texas	465	475	445	96	94
Washington	29	33	36	124	109
Other States	49	55	51	104	93
United States	1,755	1,802	1,734	99	96

United States Cattle on Feed 1,000+ Capacity Feedlots Number Marketed

Million Head



Other Disappearance on 1,000+ Capacity Feedlots by Month – States and United States: 2009 and 2010

State	During October 2009 (1,000 head)	During September 2010 (1,000 head)	During October 2010		
			Number (1,000 head)	Percent of previous year (percent)	Percent of previous month (percent)
Arizona	1	1	1	100	100
California	2	2	2	100	100
Colorado	5	5	10	200	200
Idaho	1	1	1	100	100
Iowa	3	4	2	67	50
Kansas	15	10	15	100	150
Nebraska	10	10	10	100	100
Oklahoma	3	1	2	67	200
South Dakota	1	2	1	100	50
Texas	15	15	15	100	100
Washington	1	1	1	100	100
Other States	2	2	2	100	100
United States	59	54	62	105	115

Terms and Definitions of Cattle on Feed Estimates

Cattle on feed are animals being fed a ration of grain, silage, hay and/or protein supplement for slaughter market that are expected to produce a carcass that will grade select or better. It excludes cattle being "backgrounded only" for later sale as feeders or later placement in another feedlot.

Placements are cattle put into a feedlot, fed a ration which will produce a carcass that will grade select or better, and are intended for the slaughter market.

Marketings are cattle shipped out of feedlots to a slaughter market.

Other disappearance includes death loss, movement from feedlots to pasture, and shipments to other feedlots for further feeding.

Reliability of Cattle on Feed Estimates

Survey Procedures: During January and July all known feedlots in the United States with capacity of 1,000 or more head are surveyed to provide data for cattle on feed estimates. During the other months, all known feedlots from 16 States are surveyed. The 16 States account for 98 percent of the cattle on feed in feedlots with capacity of 1,000 or more head. Individual State estimates are published monthly for 11 of the 16 States. Data collected from the remaining 5 States are used to establish the "Other States" estimates. These 5 States include IL, MN, NM, OR, and WY. The "Other States" category represents all cattle on feed with a capacity of 1,000 or more head for the rest of the United States.

Estimating Procedures: These cattle on feed estimates were prepared by the Agricultural Statistics Board after reviewing recommendations and analysis submitted by each State office. Regional and State survey data were reviewed for reasonableness with each other and with estimates from the previous month when establishing the current estimates.

Revision Policy: Revisions to previous estimates are made to improve month to month relationships. Estimates for the previous month are subject to revision in all States each month when current estimates are made. In February, all monthly estimates for the previous year, and the number of feedlots and annual marketings from two years ago are reviewed and subject to revisions. The reviews are primarily based on slaughter data, state check-off or brand data, and any other data that may have been received after the original estimate was made. Estimates will also be reviewed after data from the Census of Agriculture are available. No revisions will be made after that date and estimates become final.

Reliability: Since all 1,000+ capacity cattle on feed operators in every State are not included in the monthly survey, survey estimates are subject to sampling variability. Survey results are also subject to non-sampling errors such as omissions, duplications, and mistakes in reporting, recording, and processing the data. The effects of these errors cannot be measured directly. They are minimized through rigid quality controls in the data collection process and through a careful review of all reported data for consistency and reasonableness.

To assist users in evaluating the reliability of estimates in this report, the "**Root Mean Square Error**" is shown for selected items in the table on the following page. The "Root Mean Square Error" is a statistical measure based on past performance and is computed using the differences between first and latest estimates. The "Root Mean Square Error" for cattle on feed inventory estimates over the past 24 months is 0.05 percent. This means that chances are 2 out of 3 that the final estimate will not be above or below the current estimate of 11.5 million head by more than 0.05 percent. Chances are 9 out of 10 that the difference will not exceed 0.09 percent.

The table on the following page shows a 24 month record of the range of differences between first and latest estimates for selected items. Using estimates of number on feed as an example, changes between the first estimate and the latest estimate during the past 24 months have averaged 3,000 head, ranging from 0 to 18,000 head. During this period the initial estimate has been above the latest estimate 6 times and has been below the latest estimate 4 times. This does not imply that the initial estimate is likely to understate or overstate final inventory.

Reliability of Monthly Cattle on Feed Estimates

[Based on data for the past 24 months]

Item	Root mean square error	90 percent confidence level	Difference between first and latest estimate				
			Average	Smallest	Largest	Months	
						Below latest	Above latest
	(percent)	(percent)	(1,000)	(1,000)	(1,000)	(number)	(number)
Number on feed	0.05	0.09	3	0	18	4	6
Placements	0.16	0.28	1	0	9	4	4
Marketings	0.29	0.50	2	0	21	7	3

Information Contacts

Listed below are the commodity specialists in the Livestock Branch of the National Agricultural Statistics Service to contact for additional information. E-mail inquiries may be sent to nass@nass.usda.gov

Dan Kerestes, Chief, Livestock Branch	(202) 720-3570
Scott Hollis, Head, Livestock Section	(202) 690-2424
Lorie Warren – Dairy Products	(202) 690-3236
Joe Gaynor – Dairy Products Prices	(202) 690-2168
Jason Hardegree – Cattle, Cattle on Feed	(202) 720-3040
Sherry Bertramsen – Livestock Slaughter	(515) 284-4340
Everett Olbert – Sheep and Goats	(202) 720-4751
Mike Miller – Milk Production and Milk Cows	(202) 720-3278
Nick Streff – Hogs and Pigs	(202) 720-3106

Access to NASS Reports

For your convenience, you may access NASS reports and products the following ways:

- All reports are available electronically, at no cost, on the NASS web site: <http://www.nass.usda.gov>
- Both national and state specific reports are available via a free e-mail subscription. To set-up this free subscription, visit <http://www.nass.usda.gov> and in the “Receive NASS Updates” box under “Receive reports by Email,” click on “National” or “State” to select the reports you would like to receive.
- Printed reports may be purchased from the National Technical Information Service (NTIS) by calling toll-free (800) 999-6779, or (703) 605-6220 if calling from outside the United States or Canada. Accepted methods of payment are Visa, MasterCard, check, or money order.

For more information on NASS surveys and reports, call the NASS Agricultural Statistics Hotline at (800) 727-9540, 7:30 a.m. to 4:00 p.m. ET, or e-mail: nass@nass.usda.gov.

The United States Department of Agriculture (USDA) prohibits discrimination in all its programs and activities on the basis of race, color, national origin, age, disability, and where applicable, sex, marital status, familial status, parental status, religion, sexual orientation, political beliefs, genetic information, reprisal, or because all or a part of an individual's income is derived from any public assistance program. (Not all prohibited bases apply to all programs.) Persons with disabilities who require alternative means for communication of program information (Braille, large print, audiotape, etc.) should contact USDA's TARGET Center at (202) 720-2600 (voice and TDD).

To file a complaint of discrimination, write to USDA, Assistant Secretary for Civil Rights, Office of the Assistant Secretary for Civil Rights, 1400 Independence Avenue, S.W., Stop 9410, Washington, DC 20250-9410, or call toll-free at (866) 632-9992 (English) or (800) 877-8339 (TDD) or (866) 377-8642 (English Federal-relay) or (800) 845-6136 (Spanish Federal-relay). USDA is an equal opportunity provider and employer.



Today's Strategies & Tomorrow's Opportunities

February 24-25, 2011

Crystal Gateway Marriott Hotel
Arlington, Virginia

www.usda.gov/oce/forum

Early Bird Registration \$350 until January 21, 2011
* \$375 after January 21

Topical Sessions Will Address:

- *Risk Management
- *Renewable Energy
- *Rural Communities
- *Land Tenure Issues
- *Sustainability
- *Foreign Trade & Domestic Markets
- *Conservation & the Environment
- *Nutrition & USDA Dietary Guidelines
- *Broadband