



Cattle on Feed

ISSN: 1948-9080

Released January 21, 2011, by the National Agricultural Statistics Service (NASS), Agricultural Statistics Board, United States Department of Agriculture (USDA).

United States Cattle on Feed Up 5 Percent

Cattle and calves on feed for slaughter market in the United States for feedlots with capacity of 1,000 or more head totaled 11.5 million head on January 1, 2011. The inventory was 5 percent above January 1, 2010. The inventory included 7.18 million steers and steer calves, up 4 percent from the previous year. This group accounted for 62 percent of the total inventory. Heifers and heifer calves accounted for 4.26 million head, up 5 percent from 2010.

Placements in feedlots during December totaled 1.80 million, 16 percent above 2009. Net placements were 1.73 million head. During December, placements of cattle and calves weighing less than 600 pounds were 480,000, 600-699 pounds were 495,000, 700-799 pounds were 440,000, and 800 pounds and greater were 380,000.

Marketings of fed cattle during December totaled 1.83 million, 5 percent above 2009. This is the second highest fed cattle marketings for the month of December since the series began in 1996.

Other disappearance totaled 65,000 during December, 10 percent below 2009.

Number of Cattle on Feed, Placements, Marketings, and Other Disappearance on 1,000+ Capacity Feedlots – United States: January 1, 2010 and 2011

Item	Number		Percent of previous year
	2010	2011	
	(1,000 head)	(1,000 head)	(percent)
On feed December 1	11,277	11,614	103
Placed on feed during December	1,546	1,795	116
Fed cattle marketed during December	1,743	1,827	105
Other disappearance during December	72	65	90
On feed January 1	11,008	11,517	105

Number of Cattle on Feed, Placements, Marketings, and Other Disappearance on 1,000+ Capacity Feedlots – United States: December 1, 2009 and 2010

Item	Number		Percent of previous year
	2009	2010	
	(1,000 head)	(1,000 head)	(percent)
On feed November 1	11,134	11,487	103
Placed on feed during November	1,844	1,958	106
Fed cattle marketed during November	1,635	1,769	108
Other disappearance during November	66	62	94
On feed December 1	11,277	11,614	103

Number on Feed by Class on 1,000+ Capacity Feedlots – United States: January 1, 2010 and 2011

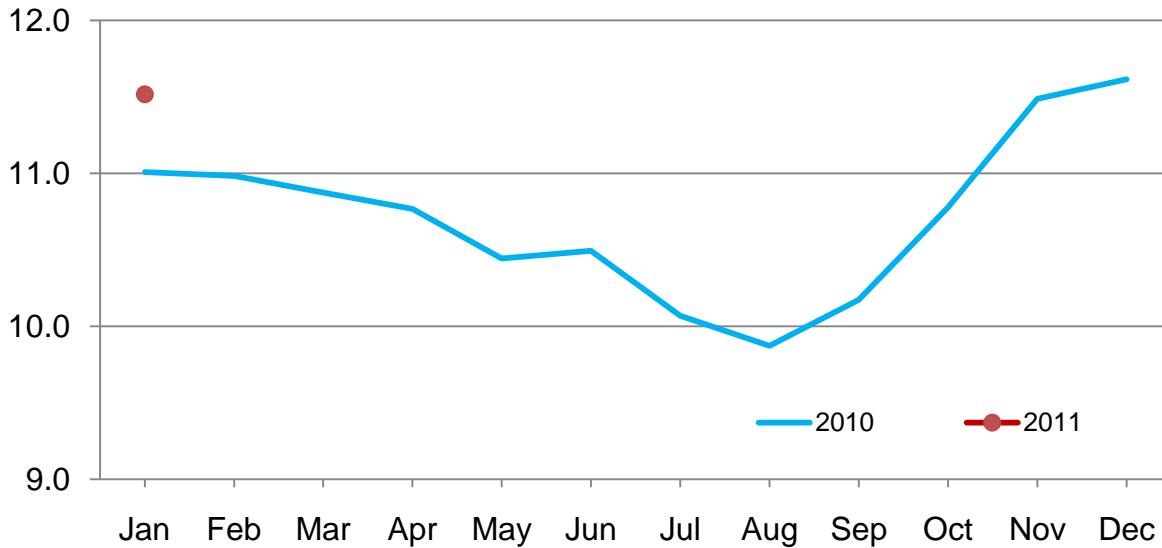
Item	Number		Percent of previous year
	2010	2011	
	(1,000 Head)	(1,000 Head)	(percent)
Class on Feed January 1			
Steers and Steer Calves	6,877	7,180	104
Heifers and Heifer Calves	4,068	4,260	105
Cows and Bulls	63	77	122

Number of Cattle on Feed on 1,000+ Capacity Feedlots by Month – States and United States: 2010 and 2011

State	January 1, 2010	December 1, 2010	January 1, 2011		
			Number	Percent of previous year	Percent of previous month
	(1,000 head)	(1,000 head)	(1,000 head)	(percent)	(percent)
Arizona	287	249	258	90	104
California	465	470	470	101	100
Colorado	1,010	1,090	1,080	107	99
Idaho	215	235	240	112	102
Iowa	570	630	640	112	102
Kansas	2,250	2,360	2,280	101	97
Nebraska	2,360	2,460	2,430	103	99
Oklahoma	365	380	375	103	99
South Dakota	235	255	260	111	102
Texas	2,680	2,840	2,840	106	100
Washington	166	208	212	128	102
Other States	405	437	432	107	99
United States	11,008	11,614	11,517	105	99

**United States Cattle on Feed
1,000+ Capacity Feedlots**

Million head

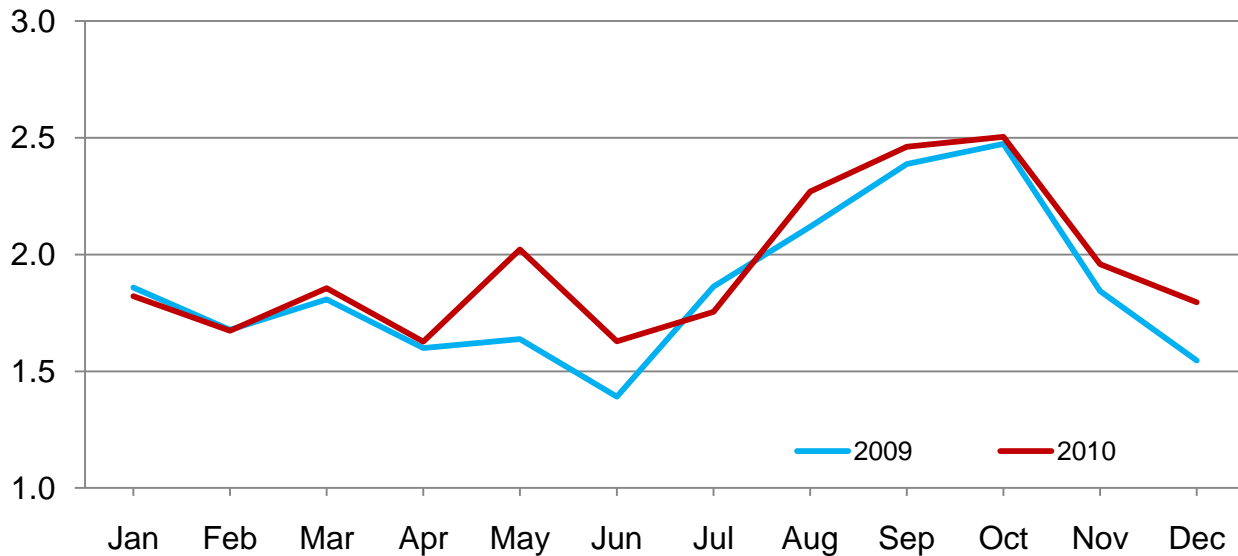


Number of Cattle Placed on Feed on 1,000+ Capacity Feedlots by Month – States and United States: 2009 and 2010

State	During December 2009 (1,000 head)	During November 2010 (1,000 head)	During December 2010		
			Number (1,000 head)	Percent of previous year (percent)	Percent of previous month (percent)
Arizona	32	22	36	113	164
California	63	69	61	97	88
Colorado	110	155	160	145	103
Idaho	41	52	42	102	81
Iowa	85	114	93	109	82
Kansas	375	375	410	109	109
Nebraska	320	445	380	119	85
Oklahoma	50	60	55	110	92
South Dakota	38	62	45	118	73
Texas	350	475	420	120	88
Washington	29	53	42	145	79
Other States	53	76	51	96	67
United States	1,546	1,958	1,795	116	92

**United States Cattle on Feed
1,000+ Capacity Feedlots Number Placed**

Million head



Number of Cattle Placed on Feed by Weight Group on 1,000+ Capacity Feedlots by Month – States and United States: 2009 and 2010

State	During December									
	Under 600 lbs		600-699 lbs		700-799 lbs		800+ lbs		Total	
	2009	2010	2009	2010	2009	2010	2009	2010	2009	2010
	(1,000 head)	(1,000 head)	(1,000 head)	(1,000 head)	(1,000 head)	(1,000 head)	(1,000 head)	(1,000 head)	(1,000 head)	(1,000 head)
Colorado	25	30	30	50	30	40	25	40	110	160
Kansas	70	75	100	115	135	130	70	90	375	410
Nebraska	60	55	80	110	100	105	80	110	320	380
Texas	140	180	110	120	70	80	30	40	350	420
Other States	135	140	100	100	66	85	90	100	391	425
United States	430	480	420	495	401	440	295	380	1,546	1,795

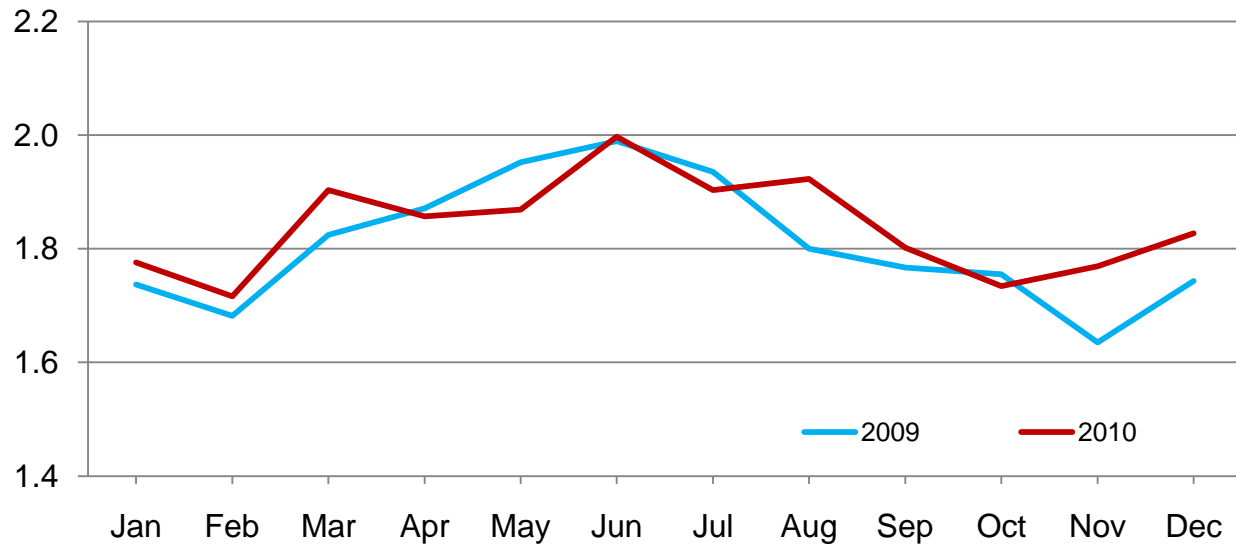
State	During November									
	Under 600 lbs		600-699 lbs		700-799 lbs		800+ lbs		Total	
	2009	2010	2009	2010	2009	2010	2009	2010	2009	2010
	(1,000 head)	(1,000 head)	(1,000 head)	(1,000 head)	(1,000 head)	(1,000 head)	(1,000 head)	(1,000 head)	(1,000 head)	(1,000 head)
Colorado	40	45	50	40	35	30	40	40	165	155
Kansas	70	80	105	105	110	120	70	70	355	375
Nebraska	80	110	140	160	80	65	100	110	400	445
Texas	160	195	140	145	100	85	55	50	455	475
Other States	160	195	130	140	69	73	110	100	469	508
United States	510	625	565	590	394	373	375	370	1,844	1,958

Number of Cattle Marketed on 1,000+ Capacity Feedlots by Month – States and United States: 2009 and 2010

State	During December 2009	During November 2010	During December 2010		
			Number	Percent of previous year	Percent of previous month
			(1,000 head)	(percent)	(percent)
Arizona	26	23	26	100	113
California	59	55	57	97	104
Colorado	155	150	165	106	110
Idaho	35	30	35	100	117
Iowa	73	90	80	110	89
Kansas	445	400	480	108	120
Nebraska	350	395	400	114	101
Oklahoma	58	63	58	100	92
South Dakota	36	36	39	108	108
Texas	410	440	400	98	91
Washington	34	36	36	106	100
Other States	62	51	51	82	100
United States	1,743	1,769	1,827	105	103

United States Cattle on Feed 1,000+ Capacity Feedlots Number Marketed

Million head



Other Disappearance on 1,000+ Capacity Feedlots by Month – States and United States: 2009 and 2010

State	During December 2009 (1,000 head)	During November 2010 (1,000 head)	During December 2010		
			Number (1,000 head)	Percent of previous year (percent)	Percent of previous month (percent)
Arizona	1	1	1	100	100
California	4	4	4	100	100
Colorado	5	5	5	100	100
Idaho	1	2	2	200	100
Iowa	2	4	3	150	75
Kansas	10	15	10	100	67
Nebraska	20	10	10	50	100
Oklahoma	2	2	2	100	100
South Dakota	2	1	1	50	100
Texas	20	15	20	100	133
Washington	1	1	2	200	200
Other States	4	2	5	125	250
United States	72	62	65	90	105

Number on Feed by Class on 1,000+ Capacity Feedlots by Quarter – States and United States: 2010 and 2011

State	Steers and steer calves			Heifers and heifer calves			Cows and bulls		
	Jan 1, 2010	Oct 1, 2010	Jan 1, 2011	Jan 1, 2010	Oct 1, 2010	Jan 1, 2011	Jan 1, 2010	Oct 1, 2010	Jan 1, 2011
	(1,000 Head)	(1,000 Head)	(1,000 Head)	(1,000 Head)	(1,000 Head)	(1,000 Head)	(1,000 Head)	(1,000 Head)	(1,000 Head)
Arizona	285	239	255	2	1	3	0	0	0
California	410	355	405	53	90	65	2	0	0
Colorado	650	705	710	355	290	365	5	5	5
Idaho	120	116	116	90	78	108	5	6	16
Iowa	380	395	440	190	175	199	0	0	1
Kansas	1,250	1,230	1,220	990	1,090	1,055	10	10	5
Nebraska	1,440	1,340	1,520	910	865	895	10	15	15
Oklahoma	220	205	210	145	165	165	0	0	0
South Dakota	115	97	129	92	92	107	28	16	24
Texas	1,650	1,560	1,750	1,029	1,079	1,089	1	1	1
Washington	94	105	132	71	71	72	1	1	8
Other States	263	254	293	141	127	137	1	1	2
United States	6,877	6,601	7,180	4,068	4,123	4,260	63	55	77

Terms and Definitions of Cattle on Feed Estimates

Cattle on feed are animals being fed a ration of grain, silage, hay and/or protein supplement for slaughter market that are expected to produce a carcass that will grade select or better. It excludes cattle being "backgrounded only" for later sale as feeders or later placement in another feedlot.

Placements are cattle put into a feedlot, fed a ration which will produce a carcass that will grade select or better, and are intended for the slaughter market.

Marketings are cattle shipped out of feedlots to a slaughter market.

Other disappearance includes death loss, movement from feedlots to pasture, and shipments to other feedlots for further feeding.

Reliability of Cattle on Feed Estimates

Survey Procedures: During January and July all known feedlots in the United States with capacity of 1,000 or more head are surveyed to provide data for cattle on feed estimates. During the other months, all known feedlots from 16 States are surveyed. The 16 States account for 98 percent of the cattle on feed in feedlots with capacity of 1,000 or more head. Individual State estimates are published monthly for 11 of the 16 States. Data collected from the remaining 5 States are used to establish the "Other States" estimates. These 5 States include IL, MN, NM, OR, and WY. The "Other States" category represents all cattle on feed with a capacity of 1,000 or more head for the rest of the United States.

Estimating Procedures: These cattle on feed estimates were prepared by the Agricultural Statistics Board after reviewing recommendations and analysis submitted by each State office. Regional and State survey data were reviewed for reasonableness with each other and with estimates from the previous month when establishing the current estimates.

Revision Policy: Revisions to previous estimates are made to improve month to month relationships. Estimates for the previous month are subject to revision in all States each month when current estimates are made. In February, all monthly estimates for the previous year, and the number of feedlots and annual marketings from two years ago are reviewed and subject to revisions. The reviews are primarily based on slaughter data, state check-off or brand data, and any other data that may have been received after the original estimate was made. Estimates will also be reviewed after data from the Census of Agriculture are available. No revisions will be made after that date and estimates become final.

Reliability: Since all 1,000+ capacity cattle on feed operators in every State are not included in the monthly survey, survey estimates are subject to sampling variability. Survey results are also subject to non-sampling errors such as omissions, duplications, and mistakes in reporting, recording, and processing the data. The effects of these errors cannot be measured directly. They are minimized through rigid quality controls in the data collection process and through a careful review of all reported data for consistency and reasonableness.

To assist users in evaluating the reliability of estimates in this report, the "**Root Mean Square Error**" is shown for selected items in the table on the following page. The "Root Mean Square Error" is a statistical measure based on past performance and is computed using the differences between first and latest estimates. The "Root Mean Square Error" for cattle on feed inventory estimates over the past 24 months is 0.05 percent. This means that chances are 2 out of 3 that the final estimate will not be above or below the current estimate of 11.5 million head by more than 0.05 percent. Chances are 9 out of 10 that the difference will not exceed 0.09 percent.

The table on the following page shows a 24 month record of the range of differences between first and latest estimates for selected items. Using estimates of number on feed as an example, changes between the first estimate and the latest estimate during the past 24 months have averaged 3,000 head, ranging from 0 to 18,000 head. During this period the initial estimate has been above the latest estimate 6 times and has been below the latest estimate 4 times. This does not imply that the initial estimate is likely to understate or overstate final inventory.

Reliability of Monthly Cattle on Feed Estimates

[Based on data for the past 24 months]

Item	Root mean square error	90 percent confidence level	Difference between first and latest estimate				
			Average	Smallest	Largest	Months	
						Below latest	Above latest
	(percent)	(percent)	(1,000)	(1,000)	(1,000)	(number)	(number)
Number on feed	0.05	0.09	3	0	18	4	6
Placements	0.16	0.28	1	0	9	3	4
Marketings	0.29	0.51	2	0	21	7	4

Information Contacts

Listed below are the commodity specialists in the Livestock Branch of the National Agricultural Statistics Service to contact for additional information. E-mail inquiries may be sent to nass@nass.usda.gov

Dan Kerestes, Chief, Livestock Branch	(202) 720-3570
Scott Hollis, Head, Livestock Section	(202) 690-2424
Sherry Bertramsen – Livestock Slaughter	(515) 284-4340
Joe Gaynor – Dairy Products Prices	(202) 690-2168
Jason Hardegree – Cattle, Cattle on Feed	(202) 720-3040
Mike Miller – Milk Production and Milk Cows	(202) 720-3278
Everett Olbert – Sheep and Goats	(202) 720-4751
Nick Streff – Hogs and Pigs	(202) 720-3106
Lorie Warren – Dairy Products	(202) 690-3236

Access to NASS Reports

For your convenience, you may access NASS reports and products the following ways:

- All reports are available electronically, at no cost, on the NASS web site: <http://www.nass.usda.gov>
- Both national and state specific reports are available via a free e-mail subscription. To set-up this free subscription, visit <http://www.nass.usda.gov> and in the “Receive NASS Updates” box under “Receive reports by Email,” click on “National” or “State” to select the reports you would like to receive.
- Printed reports may be purchased from the National Technical Information Service (NTIS) by calling toll-free (800) 999-6779, or (703) 605-6220 if calling from outside the United States or Canada. Accepted methods of payment are Visa, MasterCard, check, or money order.

For more information on NASS surveys and reports, call the NASS Agricultural Statistics Hotline at (800) 727-9540, 7:30 a.m. to 4:00 p.m. ET, or e-mail: nass@nass.usda.gov.

The United States Department of Agriculture (USDA) prohibits discrimination in all its programs and activities on the basis of race, color, national origin, age, disability, and where applicable, sex, marital status, familial status, parental status, religion, sexual orientation, political beliefs, genetic information, reprisal, or because all or a part of an individual's income is derived from any public assistance program. (Not all prohibited bases apply to all programs.) Persons with disabilities who require alternative means for communication of program information (Braille, large print, audiotape, etc.) should contact USDA's TARGET Center at (202) 720-2600 (voice and TDD).

To file a complaint of discrimination, write to USDA, Assistant Secretary for Civil Rights, Office of the Assistant Secretary for Civil Rights, 1400 Independence Avenue, S.W., Stop 9410, Washington, DC 20250-9410, or call toll-free at (866) 632-9992 (English) or (800) 877-8339 (TDD) or (866) 377-8642 (English Federal-relay) or (800) 845-6136 (Spanish Federal-relay). USDA is an equal opportunity provider and employer.



Today's Strategies & Tomorrow's Opportunities

February 24-25, 2011

Crystal Gateway Marriott Hotel
Arlington, Virginia

www.usda.gov/oce/forum

Early Bird Registration \$350 until January 21, 2011
* \$375 after January 21

Topical Sessions Will Address:

- *Risk Management
- *Renewable Energy
- *Rural Communities
- *Land Tenure Issues
- *Sustainability
- *Foreign Trade & Domestic Markets
- *Conservation & the Environment
- *Nutrition & USDA Dietary Guidelines
- *Broadband