



Cattle on Feed

ISSN: 1948-9080

Released June 17, 2011, by the National Agricultural Statistics Service (NASS), Agricultural Statistics Board, United States Department of Agriculture (USDA).

United States Cattle on Feed Up 4 Percent

Cattle and calves on feed for slaughter market in the United States for feedlots with capacity of 1,000 or more head totaled 10.9 million head on June 1, 2011. The inventory was 4 percent above June 1, 2010.

Placements in feedlots during May totaled 1.81 million, 11 percent below 2010. Net placements were 1.73 million head. During May, placements of cattle and calves weighing less than 600 pounds were 415,000, 600-699 pounds were 355,000, 700-799 pounds were 480,000, and 800 pounds and greater were 560,000.

Marketings of fed cattle during May totaled 2.00 million, 7 percent above 2010.

Other disappearance totaled 80,000 during May, 18 percent below 2010.

Number of Cattle on Feed, Placements, Marketings, and Other Disappearance on 1,000+ Capacity Feedlots – United States: June 1, 2010 and 2011

Item	Number		Percent of previous year
	2010	2011	
	(1,000 head)	(1,000 head)	(percent)
On feed May 1	10,428	11,200	107
Placed on feed during May	2,030	1,810	89
Fed cattle marketed during May	1,865	2,002	107
Other disappearance during May	98	80	82
On feed June 1	10,495	10,928	104

Number of Cattle on Feed, Placements, Marketings, and Other Disappearance on 1,000+ Capacity Feedlots – United States: May 1, 2010 and 2011

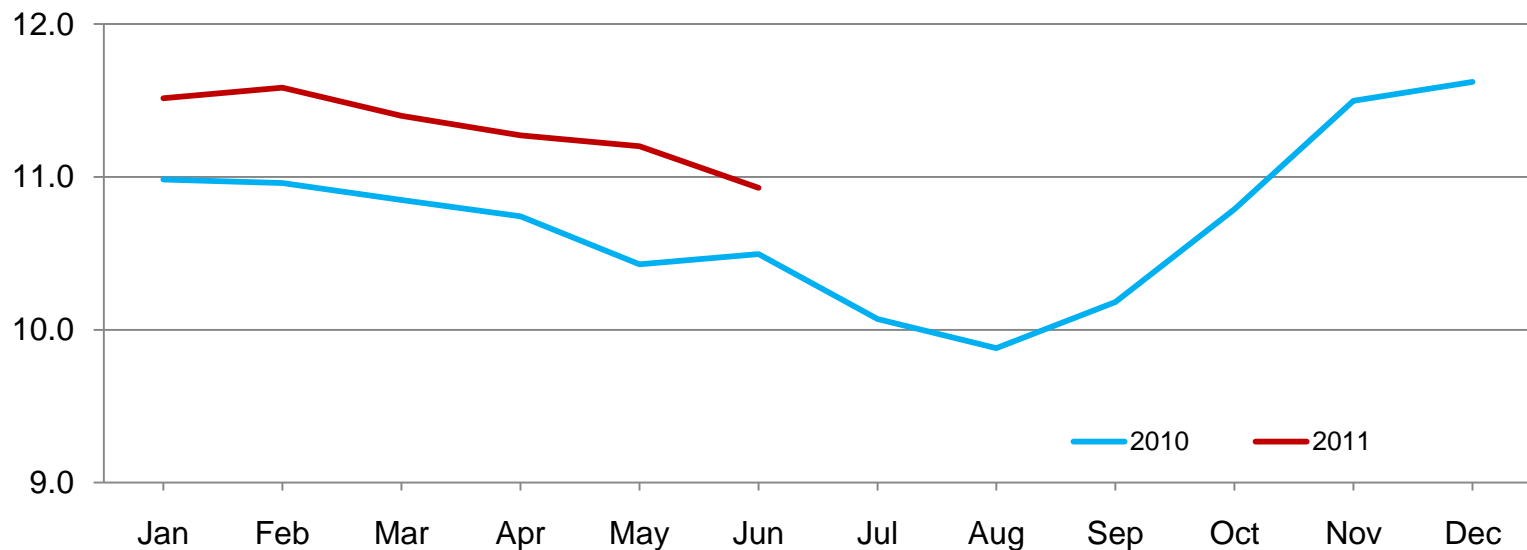
Item	Number		Percent of previous year
	2010	2011	
	(1,000 head)	(1,000 head)	(percent)
On feed April 1	10,742	11,271	105
Placed on feed during April	1,634	1,795	110
Fed cattle marketed during April	1,857	1,807	97
Other disappearance during April	91	59	65
On feed May 1	10,428	11,200	107

Number of Cattle on Feed on 1,000+ Capacity Feedlots by Month – States and United States: 2010 and 2011

State	June 1, 2010	May 1, 2011	June 1, 2011		
			Number	Percent of previous year	Percent of previous month
	(1,000 head)	(1,000 head)	(1,000 head)	(percent)	(percent)
Arizona	263	282	290	110	103
California	425	450	460	108	102
Colorado	970	1,100	1,080	111	98
Idaho	210	230	230	110	100
Iowa	590	640	610	103	95
Kansas	2,130	2,170	2,110	99	97
Nebraska	2,140	2,370	2,190	102	92
Oklahoma	345	355	355	103	100
South Dakota	230	255	235	102	92
Texas	2,640	2,750	2,780	105	101
Washington	179	205	199	111	97
Other States	373	393	389	104	99
United States	10,495	11,200	10,928	104	98

Cattle on Feed Inventory on 1,000+ Capacity Feedlots – United States

Million head

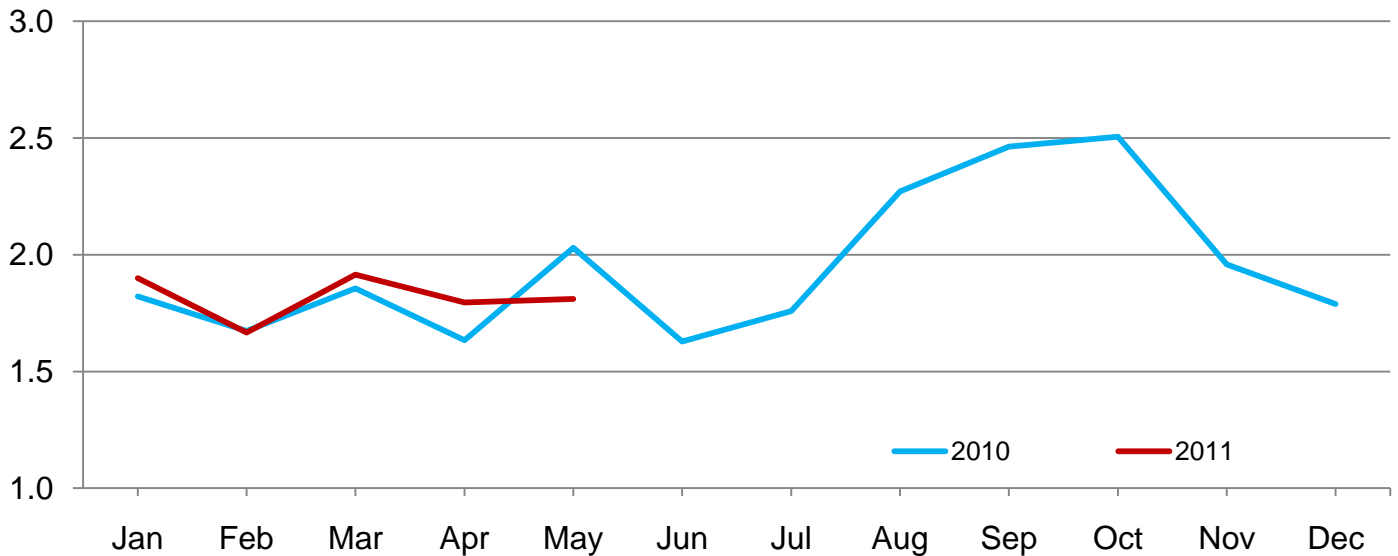


Number of Cattle Placed on Feed on 1,000+ Capacity Feedlots by Month – States and United States: 2010 and 2011

State	During May 2010	During April 2011	During May 2011		
			Number	Percent of previous year	Percent of previous month
	(1,000 head)	(1,000 head)	(1,000 head)	(percent)	(percent)
Arizona	20	25	28	140	112
California	67	57	71	106	125
Colorado	185	165	140	76	85
Idaho	32	34	36	113	106
Iowa	64	69	47	73	68
Kansas	420	380	375	89	99
Nebraska	380	370	340	89	92
Oklahoma	93	76	66	71	87
South Dakota	42	31	33	79	106
Texas	620	510	560	90	110
Washington	42	28	39	93	139
Other States	65	50	75	115	150
United States	2,030	1,795	1,810	89	101

Number of Cattle Placed on 1,000+ Capacity Feedlots – United States

Million Head



Number of Cattle Placed on Feed by Weight Group on 1,000+ Capacity Feedlots by Month – States and United States: 2010 and 2011

State	During May									
	Under 600 lbs		600-699 lbs		700-799 lbs		800+ lbs		Total	
	2010	2011	2010	2011	2010	2011	2010	2011	2010	2011
	(1,000 head)	(1,000 head)	(1,000 head)	(1,000 head)	(1,000 head)	(1,000 head)	(1,000 head)	(1,000 head)	(1,000 head)	(1,000 head)
Colorado	25	30	25	25	45	35	90	50	185	140
Kansas	60	65	80	70	130	110	150	130	420	375
Nebraska	55	50	70	55	105	80	150	155	380	340
Texas	180	170	180	150	170	165	90	75	620	560
Other States	130	100	55	55	85	90	155	150	425	395
United States	450	415	410	355	535	480	635	560	2,030	1,810

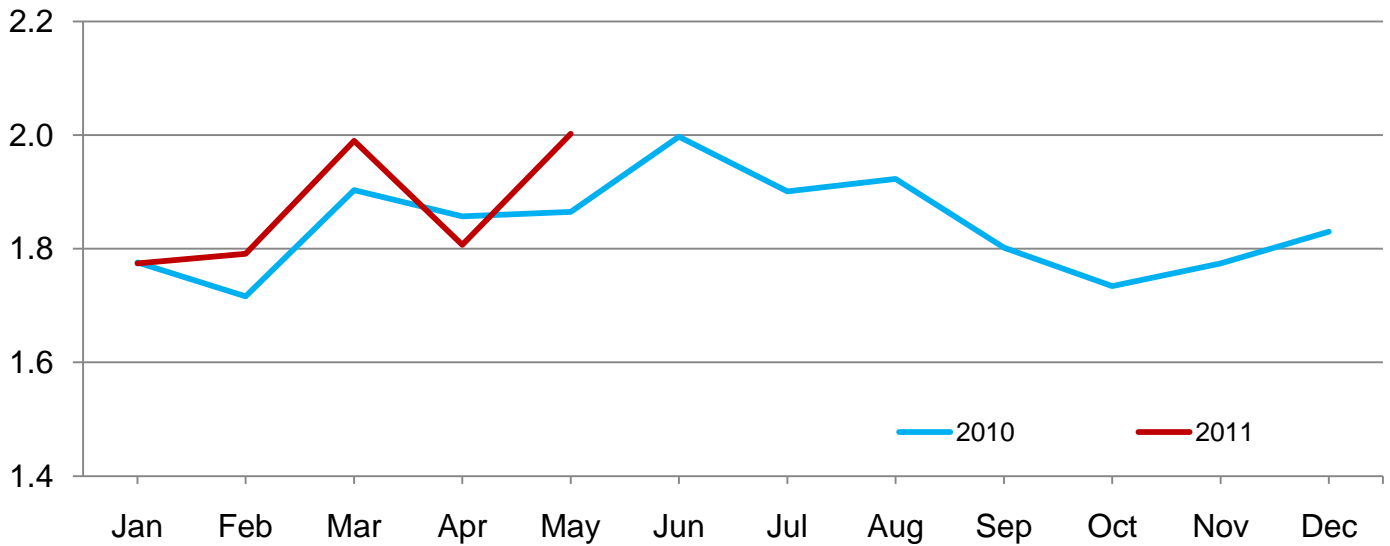
State	During April									
	Under 600 lbs		600-699 lbs		700-799 lbs		800+ lbs		Total	
	2010	2011	2010	2011	2010	2011	2010	2011	2010	2011
	(1,000 head)	(1,000 head)	(1,000 head)	(1,000 head)	(1,000 head)	(1,000 head)	(1,000 head)	(1,000 head)	(1,000 head)	(1,000 head)
Colorado	30	35	35	30	45	45	60	55	170	165
Kansas	55	60	60	60	100	130	100	130	315	380
Nebraska	70	60	70	60	120	100	140	150	400	370
Texas	115	195	85	95	120	125	80	95	400	510
Other States	95	100	55	65	84	90	115	115	349	370
United States	365	450	305	310	469	490	495	545	1,634	1,795

Number of Cattle Marketed on 1,000+ Capacity Feedlots by Month – States and United States: 2010 and 2011

State	During May 2010	During April 2011	During May 2011		
			Number	Percent of previous year	Percent of previous month
	(1,000 head)	(1,000 head)	(1,000 head)	(percent)	(percent)
Arizona	24	18	19	79	106
California	48	55	59	123	107
Colorado	135	150	150	111	100
Idaho	31	23	35	113	152
Iowa	72	76	73	101	96
Kansas	405	385	420	104	109
Nebraska	455	370	495	109	134
Oklahoma	72	74	65	90	88
South Dakota	44	39	50	114	128
Texas	475	530	520	109	98
Washington	37	33	44	119	133
Other States	67	54	72	107	133
United States	1,865	1,807	2,002	107	111

Number of Cattle Marketed on 1,000+ Capacity Feedlots – United States

Million Head



Other Disappearance on 1,000+ Capacity Feedlots by Month – States and United States: 2010 and 2011

State	During May 2010 (1,000 head)	During April 2011 (1,000 head)	During May 2011		
			Number (1,000 head)	Percent of previous year (percent)	Percent of previous month (percent)
Arizona	1	1	1	100	100
California	4	2	2	50	100
Colorado	20	5	10	50	200
Idaho	1	1	1	100	100
Iowa	2	3	4	200	133
Kansas	15	15	15	100	100
Nebraska	25	10	25	100	250
Oklahoma	1	2	1	100	50
South Dakota	3	2	3	100	150
Texas	15	10	10	67	100
Washington	1	1	1	100	100
Other States	10	7	7	70	100
United States	98	59	80	82	136

Terms and Definitions of Cattle on Feed Estimates

Cattle on feed are animals being fed a ration of grain, silage, hay and/or protein supplement for slaughter market that are expected to produce a carcass that will grade select or better. It excludes cattle being "backgrounded only" for later sale as feeders or later placement in another feedlot.

Placements are cattle put into a feedlot, fed a ration which will produce a carcass that will grade select or better, and are intended for the slaughter market.

Marketings are cattle shipped out of feedlots to a slaughter market.

Other disappearance includes death loss, movement from feedlots to pasture, and shipments to other feedlots for further feeding.

Reliability of Cattle on Feed Estimates

Survey Procedures: During January and July all known feedlots in the United States with capacity of 1,000 or more head are surveyed to provide data for cattle on feed estimates. During the other months, all known feedlots from 16 States are surveyed. The 16 States account for approximately 98 percent of the cattle on feed in feedlots with capacity of 1,000 or more head. Individual State estimates are published monthly for 11 of the 16 States. Data collected from the remaining 5 States are used to establish the "Other States" estimates. These 5 States include Illinois, Minnesota, New Mexico, Oregon, and Wyoming. The "Other States" category represents all cattle on feed with a capacity of 1,000 or more head for the rest of the United States.

Estimating Procedures: These cattle on feed estimates were prepared by the Agricultural Statistics Board after reviewing recommendations and analysis submitted by each State office. Regional and State survey data were reviewed for reasonableness with each other and with estimates from the previous month when establishing the current estimates.

Revision Policy: Revisions to previous estimates are made to improve month to month relationships. Estimates for the previous month are subject to revision in all States each month when current estimates are made. In February, all monthly estimates for the previous year, and the number of feedlots and annual marketings from two years ago are reviewed and subject to revisions. The reviews are primarily based on slaughter data, state check-off or brand data, and any other data that may have been received after the original estimate was made. Estimates will also be reviewed after data from the Census of Agriculture are available. No revisions will be made after that date and estimates become final.

Reliability: Since all 1,000+ capacity cattle on feed operators in every State are not included in the monthly survey, survey estimates are subject to sampling variability. Survey results are also subject to non-sampling errors such as omissions, duplications, and mistakes in reporting, recording, and processing the data. The effects of these errors cannot be measured directly. They are minimized through rigid quality controls in the data collection process and through a careful review of all reported data for consistency and reasonableness.

To assist users in evaluating the reliability of estimates in this report, the "**Root Mean Square Error**" is shown for selected items in the table on the following page. The "Root Mean Square Error" is a statistical measure based on past performance and is computed using the differences between first and latest estimates. The "Root Mean Square Error" for cattle on feed inventory estimates over the past 24 months is 0.1 percent. This means that chances are 2 out of 3 that the final estimate will not be above or below the current estimate of 10.9 million head by more than 0.1 percent. Chances are 9 out of 10 that the difference will not exceed 0.2 percent.

The table on the following page shows a 24 month record of the range of differences between first and latest estimates for selected items. Using estimates of number on feed as an example, changes between the first estimate and the latest estimate during the past 24 months have averaged 9,000 head, ranging from 0 to 30,000 head. During this period the initial estimate has been above the latest estimate 9 times and has been below the latest estimate 10 times. This does not imply that the initial estimate is likely to understate or overstate final inventory.

Reliability of Monthly Cattle on Feed Estimates

[Based on data for the past 24 months]

Item	Root mean square error	90 percent confidence level	Difference between first and latest estimate				
			Average	Smallest	Largest	Months	
						Below latest	Above latest
	(percent)	(percent)	(1,000)	(1,000)	(1,000)	(number)	(number)
Number on feed	0.1	0.2	9	0	30	10	9
Placements	0.3	0.6	3	0	20	11	6
Marketings	0.3	0.5	3	0	21	9	6

Information Contacts

Listed below are the commodity specialists in the Livestock Branch of the National Agricultural Statistics Service to contact for additional information. E-mail inquiries may be sent to nass@nass.usda.gov

Dan Kerestes, Chief, Livestock Branch	(202) 720-3570
Scott Hollis, Head, Livestock Section	(202) 690-2424
Travis Averill – Dairy Products Prices	(202) 690-2168
Sherry Bertramsen – Livestock Slaughter	(515) 284-4340
Doug Bounds – Hogs and Pigs	(202) 720-3106
Jason Hardegree – Cattle, Cattle on Feed	(202) 720-3040
Mike Miller – Milk Production and Milk Cows	(202) 720-3278
Everett Olbert – Sheep and Goats	(202) 720-4751
Lorie Warren – Dairy Products	(202) 690-3236

Access to NASS Reports

For your convenience, you may access NASS reports and products the following ways:

- All reports are available electronically, at no cost, on the NASS web site: <http://www.nass.usda.gov>
- Both national and state specific reports are available via a free e-mail subscription. To set-up this free subscription, visit <http://www.nass.usda.gov> and in the “Receive NASS Updates” box under “Receive reports by Email,” click on “National” or “State” to select the reports you would like to receive.
- Printed reports may be purchased from the National Technical Information Service (NTIS) by calling toll-free (800) 999-6779, or (703) 605-6220 if calling from outside the United States or Canada. Accepted methods of payment are Visa, MasterCard, check, or money order.

For more information on NASS surveys and reports, call the NASS Agricultural Statistics Hotline at (800) 727-9540, 7:30 a.m. to 4:00 p.m. ET, or e-mail: nass@nass.usda.gov.

The United States Department of Agriculture (USDA) prohibits discrimination in all its programs and activities on the basis of race, color, national origin, age, disability, and where applicable, sex, marital status, familial status, parental status, religion, sexual orientation, political beliefs, genetic information, reprisal, or because all or a part of an individual's income is derived from any public assistance program. (Not all prohibited bases apply to all programs.) Persons with disabilities who require alternative means for communication of program information (Braille, large print, audiotape, etc.) should contact USDA's TARGET Center at (202) 720-2600 (voice and TDD).

To file a complaint of discrimination, write to USDA, Assistant Secretary for Civil Rights, Office of the Assistant Secretary for Civil Rights, 1400 Independence Avenue, S.W., Stop 9410, Washington, DC 20250-9410, or call toll-free at (866) 632-9992 (English) or (800) 877-8339 (TDD) or (866) 377-8642 (English Federal-relay) or (800) 845-6136 (Spanish Federal-relay). USDA is an equal opportunity provider and employer.