



Cattle on Feed

ISSN: 1948-9080

Released October 21, 2011, by the National Agricultural Statistics Service (NASS), Agricultural Statistics Board, United States Department of Agriculture (USDA).

United States Cattle on Feed Up 5 Percent

Cattle and calves on feed for slaughter market in the United States for feedlots with capacity of 1,000 or more head totaled 11.3 million head on October 1, 2011. The inventory was 5 percent above October 1, 2010. This is the second highest October 1 inventory since the series began in 1996. The inventory included 6.95 million steers and steer calves, up 5 percent from the previous year. This group accounted for 61 percent of the total inventory. Heifers and heifer calves accounted for 4.32 million head, up 5 percent from 2010.

Placements in feedlots during September totaled 2.47 million, slightly above 2010. Net placements were 2.40 million head. During September, placements of cattle and calves weighing less than 600 pounds were 685,000, 600-699 pounds were 415,000, 700-799 pounds were 504,000, and 800 pounds and greater were 865,000.

Marketings of fed cattle during September totaled 1.81 million, 1 percent above 2010.

Other disappearance totaled 74,000 during September, 37 percent above 2010.

Number of Cattle on Feed, Placements, Marketings, and Other Disappearance on 1,000+ Capacity Feedlots – United States: October 1, 2010 and 2011

Item	Number		Percent of previous year
	2010	2011	
	(1,000 head)	(1,000 head)	(percent)
On feed September 1	10,181	10,730	105
Placed on feed during September	2,463	2,469	100
Fed cattle marketed during September	1,802	1,813	101
Other disappearance during September	54	74	137
On feed October 1	10,788	11,312	105

Number of Cattle on Feed, Placements, Marketings, and Other Disappearance on 1,000+ Capacity Feedlots – United States: September 1, 2010 and 2011

Item	Number		Percent of previous year
	2010	2011	
	(1,000 head)	(1,000 head)	(percent)
On feed August 1	9,880	10,589	107
Placed on feed during August	2,271	2,259	99
Fed cattle marketed during August	1,923	2,046	106
Other disappearance during August	47	72	153
On feed September 1	10,181	10,730	105

Number on Feed by Class on 1,000+ Capacity Feedlots – United States: October 1, 2010 and 2011

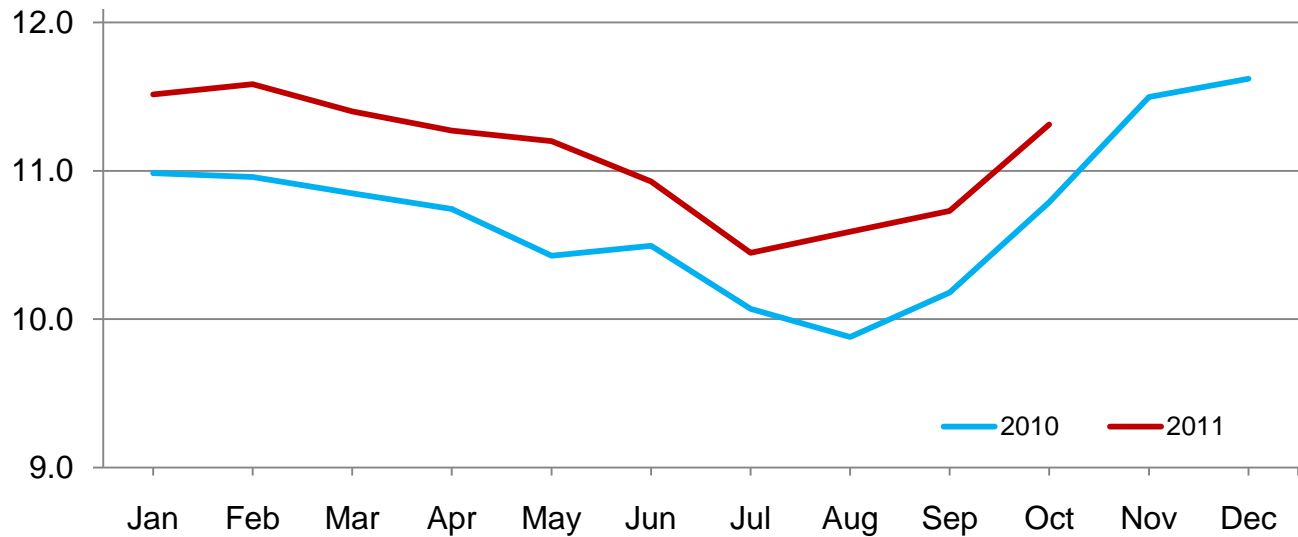
Item	Number		Percent of previous year
	2010	2011	
	(1,000 Head)	(1,000 Head)	(percent)
Class on Feed October 1			
Steers and Steer Calves	6,607	6,945	105
Heifers and Heifer Calves	4,126	4,318	105
Cows and Bulls	55	49	89

Number of Cattle on Feed on 1,000+ Capacity Feedlots by Month – States and United States: 2010 and 2011

State	October 1, 2010	September 1, 2011	October 1, 2011		
			Number	Percent of previous year	Percent of previous month
	(1,000 head)	(1,000 head)	(1,000 head)	(percent)	(percent)
Arizona	240	283	280	117	99
California	445	475	490	110	103
Colorado	1,000	990	1,070	107	108
Idaho	205	195	220	107	113
Iowa	570	550	570	100	104
Kansas	2,330	2,210	2,320	100	105
Nebraska	2,220	2,010	2,210	100	110
Oklahoma	370	365	370	100	101
South Dakota	205	190	205	100	108
Texas	2,640	2,900	2,950	112	102
Washington	181	193	208	115	108
Other States	382	369	419	110	114
United States	10,788	10,730	11,312	105	105

Cattle on Feed Inventory on 1,000+ Capacity Feedlots – United States

Million Head

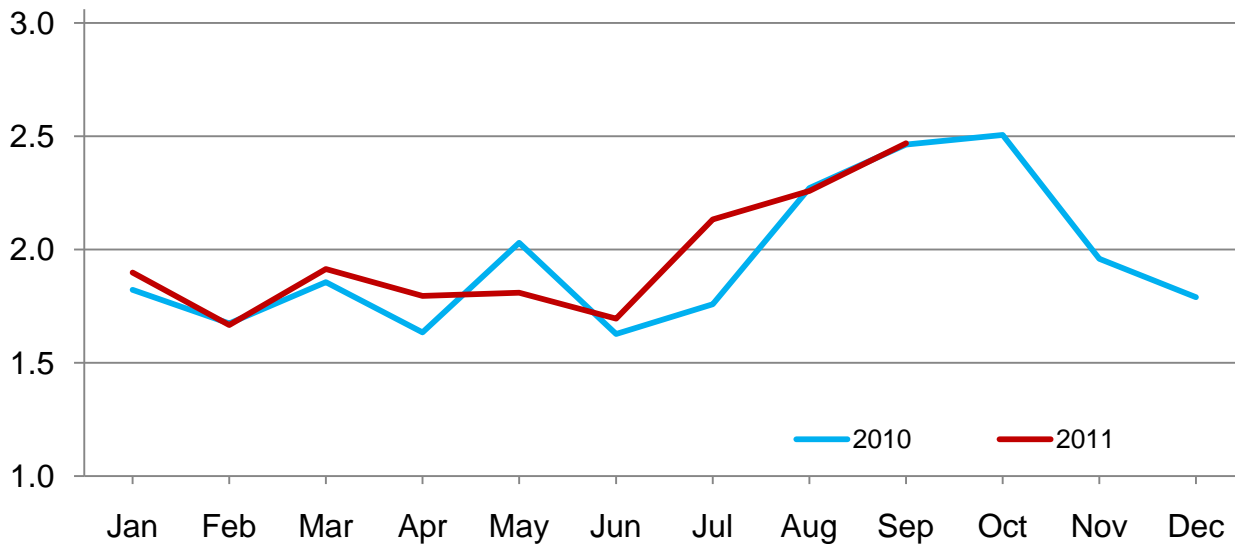


Number of Cattle Placed on Feed on 1,000+ Capacity Feedlots by Month – States and United States: 2010 and 2011

State	During September 2010	During August 2011	During September 2011		
			Number	Percent of previous year	Percent of previous month
	(1,000 head)	(1,000 head)	(1,000 head)	(percent)	(percent)
Arizona	22	19	19	86	100
California	55	56	70	127	125
Colorado	295	230	275	93	120
Idaho	57	43	67	118	156
Iowa	122	84	115	94	137
Kansas	510	520	500	98	96
Nebraska	540	445	560	104	126
Oklahoma	87	75	88	101	117
South Dakota	57	45	51	89	113
Texas	580	620	560	97	90
Washington	45	48	54	120	113
Other States	93	74	110	118	149
United States	2,463	2,259	2,469	100	109

Number of Cattle Placed on 1000+ Capacity Feedlots – United States

Million Head



Number of Cattle Placed on Feed by Weight Group on 1,000+ Capacity Feedlots by Month – States and United States: 2010 and 2011

State	During September									
	Under 600 lbs		600-699 lbs		700-799 lbs		800+ lbs		Total	
	2010	2011	2010	2011	2010	2011	2010	2011	2010	2011
	(1,000 head)	(1,000 head)	(1,000 head)	(1,000 head)	(1,000 head)	(1,000 head)	(1,000 head)	(1,000 head)	(1,000 head)	(1,000 head)
Colorado	35	40	35	25	65	60	160	150	295	275
Kansas	75	120	110	110	160	140	165	130	510	500
Nebraska	75	100	80	80	130	110	255	270	540	560
Texas	190	280	165	125	145	85	80	70	580	560
Other States	135	145	65	75	103	109	235	245	538	574
United States	510	685	455	415	603	504	895	865	2,463	2,469

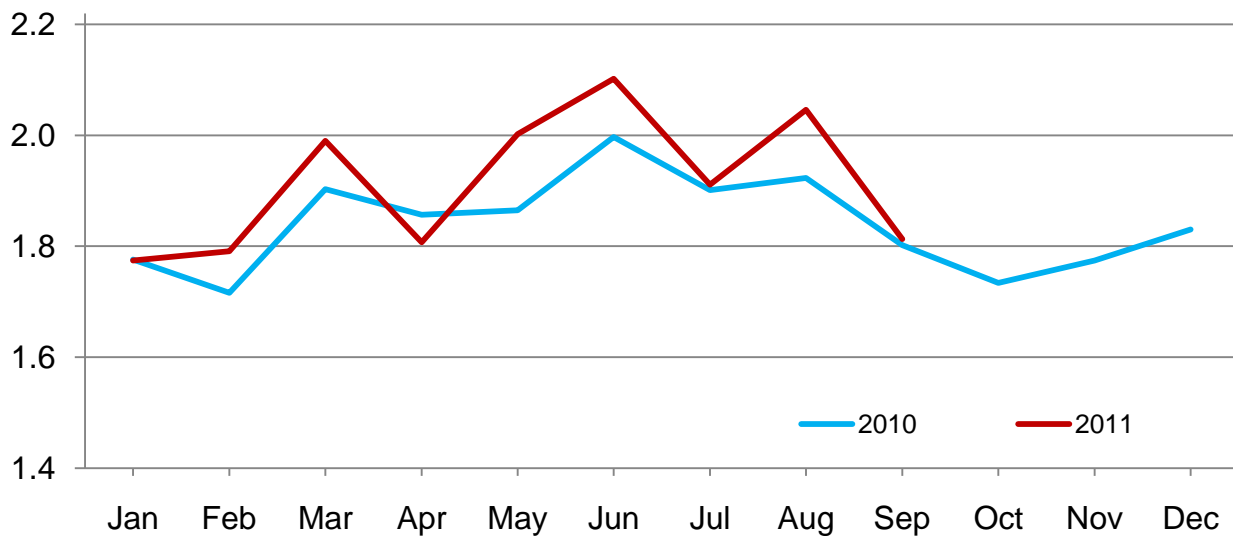
State	During August									
	Under 600 lbs		600-699 lbs		700-799 lbs		800+ lbs		Total	
	2010	2011	2010	2011	2010	2011	2010	2011	2010	2011
	(1,000 head)	(1,000 head)	(1,000 head)	(1,000 head)	(1,000 head)	(1,000 head)	(1,000 head)	(1,000 head)	(1,000 head)	(1,000 head)
Colorado	25	45	20	30	55	45	90	110	190	230
Kansas	90	105	115	105	200	165	205	145	610	520
Nebraska	55	90	80	65	100	100	245	190	480	445
Texas	215	365	120	115	120	85	85	55	540	620
Other States	110	110	60	55	91	84	190	195	451	444
United States	495	715	395	370	566	479	815	695	2,271	2,259

Number of Cattle Marketed on 1,000+ Capacity Feedlots by Month – States and United States: 2010 and 2011

State	During September 2010	During August 2011	During September 2011		
			Number	Percent of previous year	Percent of previous month
	(1,000 head)	(1,000 head)	(1,000 head)	(percent)	(percent)
Arizona	21	22	21	100	95
California	43	56	49	114	88
Colorado	180	205	185	103	90
Idaho	41	42	41	100	98
Iowa	108	92	92	85	100
Kansas	370	475	375	101	79
Nebraska	360	400	350	97	88
Oklahoma	71	67	79	111	118
South Dakota	45	48	35	78	73
Texas	475	540	490	103	91
Washington	33	44	38	115	86
Other States	55	55	58	105	105
United States	1,802	2,046	1,813	101	89

Number of Cattle Marketed on 1,000+ Capacity Feedlots – United States

Million Head



Other Disappearance on 1,000+ Capacity Feedlots by Month – States and United States: 2010 and 2011

State	During September 2010 (1,000 head)	During August 2011 (1,000 head)	During September 2011		
			Number (1,000 head)	Percent of previous year (percent)	Percent of previous month (percent)
Arizona	1	1	1	100	100
California	2	5	6	300	120
Colorado	5	5	10	200	200
Idaho	1	1	1	100	100
Iowa	4	2	3	75	150
Kansas	10	15	15	150	100
Nebraska	10	15	10	100	67
Oklahoma	1	3	4	400	133
South Dakota	2	2	1	50	50
Texas	15	20	20	133	100
Washington	1	1	1	100	100
Other States	2	2	2	100	100
United States	54	72	74	137	103

Number on Feed by Class on 1,000+ Capacity Feedlots by Quarter – States and United States: 2010 and 2011

State	Steers and steer calves			Heifers and heifer calves			Cows and bulls		
	Oct 1, 2010	Jul 1, 2011	Oct 1, 2011	Oct 1, 2010	Jul 1, 2011	Oct 1, 2011	Oct 1, 2010	Jul 1, 2011	Oct 1, 2011
	(1,000 Head)	(1,000 Head)	(1,000 Head)	(1,000 Head)	(1,000 Head)	(1,000 Head)	(1,000 Head)	(1,000 Head)	(1,000 Head)
Arizona	239	283	277	1	4	3	0	0	0
California	355	410	425	90	60	63	0	0	2
Colorado	705	690	730	290	305	335	5	5	5
Idaho	119	110	136	80	104	82	6	1	2
Iowa	395	410	390	175	180	179	0	0	1
Kansas	1,230	1,070	1,220	1,090	955	1,090	10	5	10
Nebraska	1,340	1,190	1,290	865	820	905	15	10	15
Oklahoma	205	210	205	165	140	165	0	0	0
South Dakota	97	107	114	92	86	81	16	17	10
Texas	1,560	1,640	1,750	1,079	1,059	1,199	1	1	1
Washington	108	122	123	72	74	83	1	1	2
Other States	254	272	285	127	106	133	1	1	1
United States	6,607	6,514	6,945	4,126	3,893	4,318	55	41	49

Terms and Definitions of Cattle on Feed Estimates

Cattle on feed are animals being fed a ration of grain, silage, hay and/or protein supplement for slaughter market that are expected to produce a carcass that will grade select or better. It excludes cattle being "backgrounded only" for later sale as feeders or later placement in another feedlot.

Placements are cattle put into a feedlot, fed a ration which will produce a carcass that will grade select or better, and are intended for the slaughter market.

Marketings are cattle shipped out of feedlots to a slaughter market.

Other disappearance includes death loss, movement from feedlots to pasture, and shipments to other feedlots for further feeding.

Reliability of Cattle on Feed Estimates

Survey Procedures: During January and July all known feedlots in the United States with capacity of 1,000 or more head are surveyed to provide data for cattle on feed estimates. During the other months, all known feedlots from 16 States are surveyed. The 16 States account for approximately 98 percent of the cattle on feed in feedlots with capacity of 1,000 or more head. Individual State estimates are published monthly for 11 of the 16 States. Data collected from the remaining 5 States are used to establish the "Other States" estimates. These 5 States include Illinois, Minnesota, New Mexico, Oregon, and Wyoming. The "Other States" category represents all cattle on feed with a capacity of 1,000 or more head for the rest of the United States.

Estimating Procedures: These cattle on feed estimates were prepared by the Agricultural Statistics Board after reviewing recommendations and analysis submitted by each State office. Regional and State survey data were reviewed for reasonableness with each other and with estimates from the previous month when establishing the current estimates.

Revision Policy: Revisions to previous estimates are made to improve month to month relationships. Estimates for the previous month are subject to revision in all States each month when current estimates are made. In February, all monthly estimates for the previous year, and the number of feedlots and annual marketings from two years ago are reviewed and subject to revisions. The reviews are primarily based on slaughter data, state check-off or brand data, and any other data that may have been received after the original estimate was made. Estimates will also be reviewed after data from the Census of Agriculture are available. No revisions will be made after that date and estimates become final.

Reliability: Since all 1,000+ capacity cattle on feed operators in every State are not included in the monthly survey, survey estimates are subject to sampling variability. Survey results are also subject to non-sampling errors such as omissions, duplications, and mistakes in reporting, recording, and processing the data. The effects of these errors cannot be measured directly. They are minimized through rigid quality controls in the data collection process and through a careful review of all reported data for consistency and reasonableness.

To assist users in evaluating the reliability of estimates in this report, the "**Root Mean Square Error**" is shown for selected items in the table on the following page. The "Root Mean Square Error" is a statistical measure based on past performance and is computed using the differences between first and latest estimates. The "Root Mean Square Error" for cattle on feed inventory estimates over the past 24 months is 0.1 percent. This means that chances are 2 out of 3 that the final estimate will not be above or below the current estimate of 11.3 million head by more than 0.1 percent. Chances are 9 out of 10 that the difference will not exceed 0.2 percent.

The table on the following page shows a 24 month record of the range of differences between first and latest estimates for selected items. Using estimates of number on feed as an example, changes between the first estimate and the latest estimate during the past 24 months have averaged 10,000 head, ranging from 0 to 37,000 head. During this period the initial estimate has been above the latest estimate 10 times and has been below the latest estimate 10 times. This does not imply that the initial estimate is likely to understate or overstate final inventory.

Reliability of Monthly Cattle on Feed Estimates

[Based on data for the past 24 months]

Item	Root mean square error	90 percent confidence level	Difference between first and latest estimate				
			Average	Smallest	Largest	Months	
						Below latest	Above latest
	(percent)	(percent)	(1,000)	(1,000)	(1,000)	(number)	(number)
Number on feed	0.1	0.2	10	0	37	10	10
Placements	0.4	0.7	4	0	20	11	7
Marketings	0.3	0.5	2	0	21	9	6

Information Contacts

Listed below are the commodity specialists in the Livestock Branch of the National Agricultural Statistics Service to contact for additional information. E-mail inquiries may be sent to nass@nass.usda.gov

Dan Kerestes, Chief, Livestock Branch	(202) 720-3570
Scott Hollis, Head, Livestock Section	(202) 690-2424
Travis Averill – Dairy Products Prices	(202) 690-2168
Sherry Bertramsen – Livestock Slaughter	(515) 284-4340
Doug Bounds – Hogs and Pigs	(202) 720-3106
Jason Hardegree – Cattle, Cattle on Feed	(202) 720-3040
Mike Miller – Milk Production and Milk Cows	(202) 720-3278
Everett Olbert – Sheep and Goats	(202) 720-4751
Lorie Warren – Dairy Products	(202) 690-3236

Access to NASS Reports

For your convenience, you may access NASS reports and products the following ways:

- All reports are available electronically, at no cost, on the NASS web site: <http://www.nass.usda.gov>
- Both national and state specific reports are available via a free e-mail subscription. To set-up this free subscription, visit <http://www.nass.usda.gov> and in the “Receive NASS Updates” box under “Receive reports by Email,” click on “National” or “State” to select the reports you would like to receive.
- Printed reports may be purchased from the National Technical Information Service (NTIS) by calling toll-free (800) 999-6779, or (703) 605-6220 if calling from outside the United States or Canada. Accepted methods of payment are Visa, MasterCard, check, or money order.

For more information on NASS surveys and reports, call the NASS Agricultural Statistics Hotline at (800) 727-9540, 7:30 a.m. to 4:00 p.m. ET, or e-mail: nass@nass.usda.gov.

The United States Department of Agriculture (USDA) prohibits discrimination in all its programs and activities on the basis of race, color, national origin, age, disability, and where applicable, sex, marital status, familial status, parental status, religion, sexual orientation, political beliefs, genetic information, reprisal, or because all or a part of an individual's income is derived from any public assistance program. (Not all prohibited bases apply to all programs.) Persons with disabilities who require alternative means for communication of program information (Braille, large print, audiotape, etc.) should contact USDA's TARGET Center at (202) 720-2600 (voice and TDD).

To file a complaint of discrimination, write to USDA, Assistant Secretary for Civil Rights, Office of the Assistant Secretary for Civil Rights, 1400 Independence Avenue, S.W., Stop 9410, Washington, DC 20250-9410, or call toll-free at (866) 632-9992 (English) or (800) 877-8339 (TDD) or (866) 377-8642 (English Federal-relay) or (800) 845-6136 (Spanish Federal-relay). USDA is an equal opportunity provider and employer.