



# Cattle on Feed

ISSN: 1948-9080

---

Released December 16, 2011, by the National Agricultural Statistics Service (NASS), Agricultural Statistics Board, United States Department of Agriculture (USDA).

## United States Cattle on Feed Up 4 Percent

**Cattle and calves on feed** for slaughter market in the United States for feedlots with capacity of 1,000 or more head totaled 12.1 million head on December 1, 2011. The inventory was 4 percent above December 1, 2010. This is the second highest December 1 inventory since the series began in 1996.

**Placements** in feedlots during November totaled 2.04 million, 4 percent above 2010. Net placements were 1.94 million head. During November, placements of cattle and calves weighing less than 600 pounds were 755,000, 600-699 pounds were 499,000, 700-799 pounds were 375,000, and 800 pounds and greater were 410,000.

**Marketings** of fed cattle during November totaled 1.77 million, slightly below 2010.

**Other disappearance** totaled 102,000 during November, 65 percent above 2010.

**Number of Cattle on Feed, Placements, Marketings, and Other Disappearance on 1,000+ Capacity Feedlots – United States: December 1, 2010 and 2011**

Item	Number		Percent of previous year
	2010	2011	
	(1,000 head)	(1,000 head)	(percent)
On feed November 1 .....	11,497	11,914	104
Placed on feed during November .....	1,959	2,039	104
Fed cattle marketed during November .....	1,774	1,770	100
Other disappearance during November .....	62	102	165
On feed December 1 .....	11,620	12,081	104

**Number of Cattle on Feed, Placements, Marketings, and Other Disappearance on 1,000+ Capacity Feedlots – United States: November 1, 2010 and 2011**

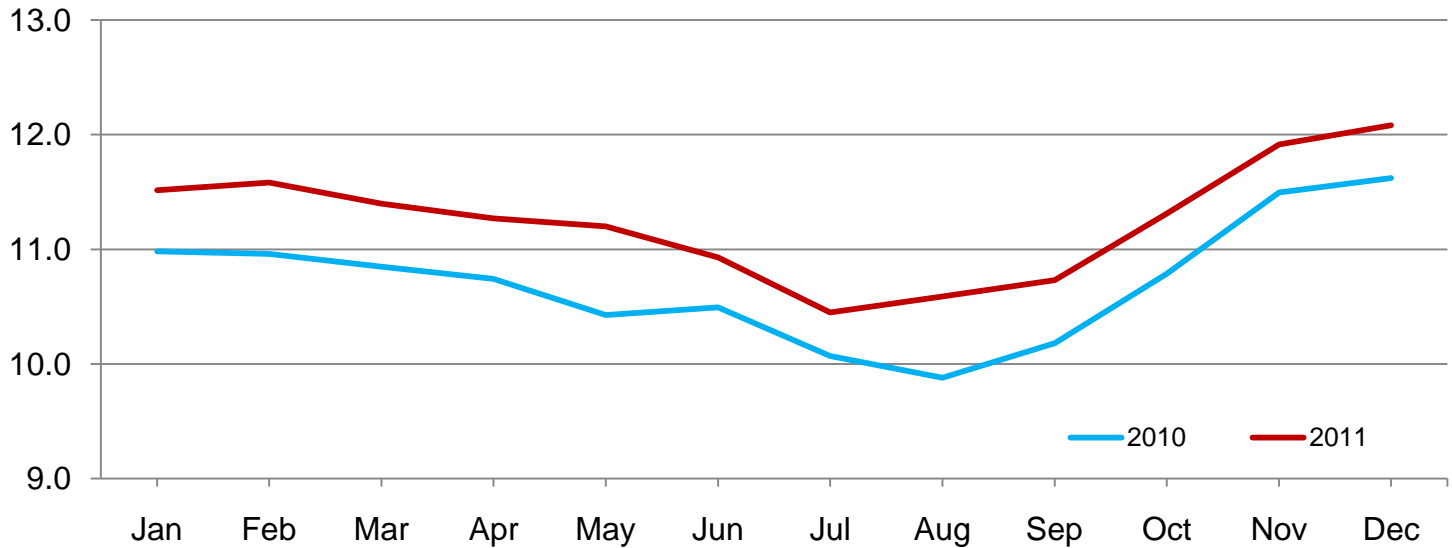
Item	Number		Percent of previous year
	2010	2011	
	(1,000 head)	(1,000 head)	(percent)
On feed October 1 .....	10,788	11,312	105
Placed on feed during October .....	2,505	2,496	100
Fed cattle marketed during October .....	1,734	1,796	104
Other disappearance during October .....	62	98	158
On feed November 1 .....	11,497	11,914	104

**Number of Cattle on Feed on 1,000+ Capacity Feedlots by Month – States and United States: 2010 and 2011**

State	December 1, 2010	November 1, 2011	December 1, 2011		
			Number	Percent of previous year	Percent of previous month
	(1,000 head)	(1,000 head)	(1,000 head)	(percent)	(percent)
Arizona .....	249	292	291	117	100
California .....	470	495	510	109	103
Colorado .....	1,090	1,140	1,160	106	102
Idaho .....	235	225	235	100	104
Iowa .....	630	570	610	97	107
Kansas .....	2,360	2,400	2,360	100	98
Nebraska .....	2,460	2,470	2,560	104	104
Oklahoma .....	380	390	385	101	99
South Dakota .....	255	240	265	104	110
Texas .....	2,840	3,020	3,010	106	100
Washington .....	214	226	236	110	104
Other States .....	437	446	459	105	103
United States .....	11,620	11,914	12,081	104	101

**Cattle on Feed Inventory on 1,000+ Capacity Feedlots – United States**

Million head

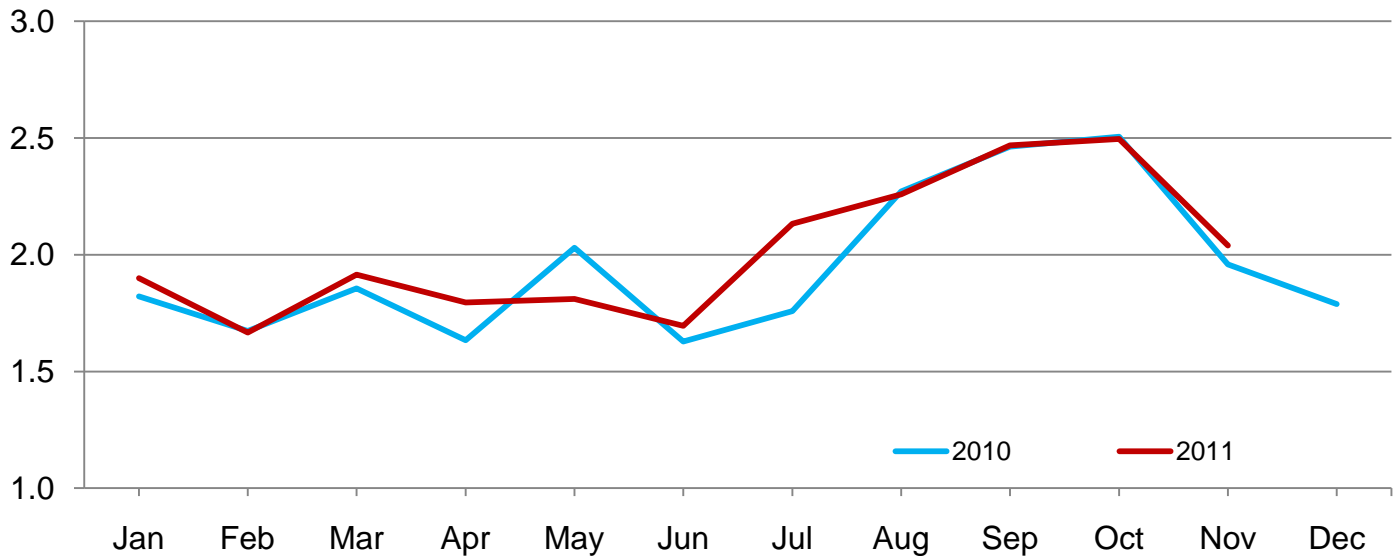


**Number of Cattle Placed on Feed on 1,000+ Capacity Feedlots by Month – States and United States: 2010 and 2011**

State	During November 2010 (1,000 head)	During October 2011 (1,000 head)	During November 2011		
			Number (1,000 head)	Percent of previous year (percent)	Percent of previous month (percent)
Arizona .....	22	32	27	123	84
California .....	69	58	68	99	117
Colorado .....	155	230	175	113	76
Idaho .....	52	55	46	88	84
Iowa .....	114	127	138	121	109
Kansas .....	375	440	375	100	85
Nebraska .....	445	665	480	108	72
Oklahoma .....	60	86	60	100	70
South Dakota .....	62	75	70	113	93
Texas .....	475	570	475	100	83
Washington .....	54	59	54	100	92
Other States .....	76	99	71	93	72
United States .....	1,959	2,496	2,039	104	82

**Number of Cattle Placed on 1,000+ Capacity Feedlots – United States**

Million head



**Number of Cattle Placed on Feed by Weight Group on 1,000+ Capacity Feedlots by Month – States and United States: 2010 and 2011**

State	During November									
	Under 600 lbs		600-699 lbs		700-799 lbs		800+ lbs		Total	
	2010	2011	2010	2011	2010	2011	2010	2011	2010	2011
	(1,000 head)	(1,000 head)	(1,000 head)	(1,000 head)	(1,000 head)	(1,000 head)	(1,000 head)	(1,000 head)	(1,000 head)	(1,000 head)
Colorado .....	45	55	40	40	30	30	40	50	155	175
Kansas .....	80	85	105	100	120	120	70	70	375	375
Nebraska .....	110	130	160	135	65	85	110	130	445	480
Texas .....	195	275	145	100	85	60	50	40	475	475
Other States .....	195	210	140	124	74	80	100	120	509	534
United States .....	625	755	590	499	374	375	370	410	1,959	2,039

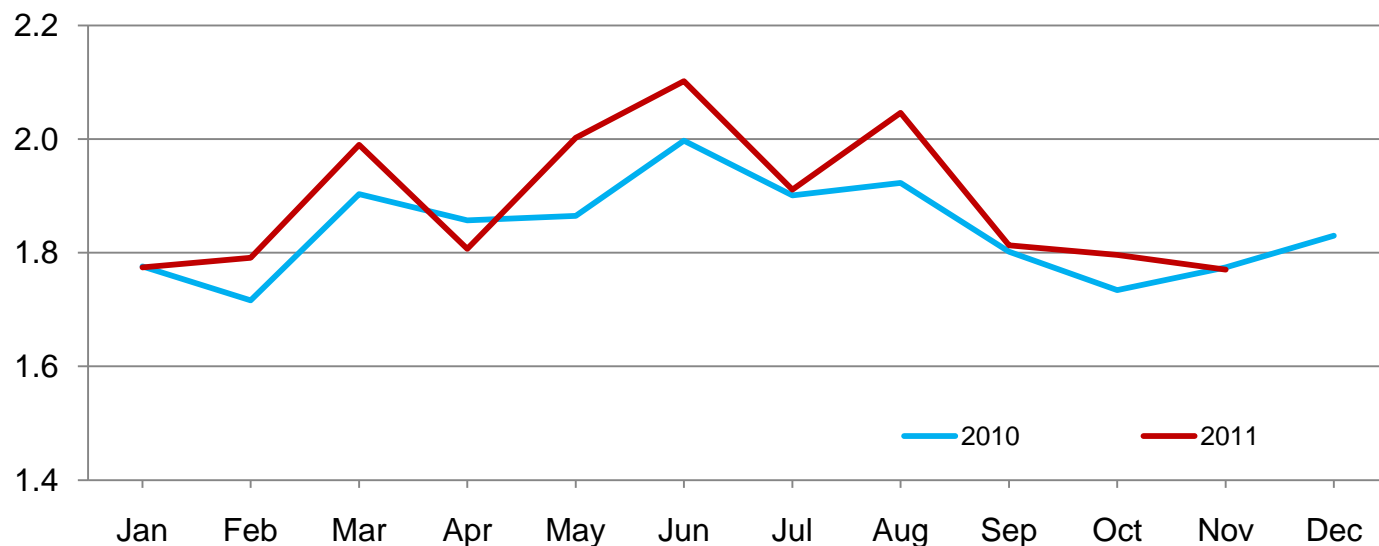
State	During October									
	Under 600 lbs		600-699 lbs		700-799 lbs		800+ lbs		Total	
	2010	2011	2010	2011	2010	2011	2010	2011	2010	2011
	(1,000 head)	(1,000 head)	(1,000 head)	(1,000 head)	(1,000 head)	(1,000 head)	(1,000 head)	(1,000 head)	(1,000 head)	(1,000 head)
Colorado .....	55	60	55	50	60	50	100	70	270	230
Kansas .....	90	115	115	120	125	115	105	90	435	440
Nebraska .....	170	185	160	180	90	110	160	190	580	665
Texas .....	220	220	190	140	145	130	85	80	640	570
Other States .....	190	225	120	115	95	101	175	150	580	591
United States .....	725	805	640	605	515	506	625	580	2,505	2,496

**Number of Cattle Marketed on 1,000+ Capacity Feedlots by Month – States and United States: 2010 and 2011**

State	During November 2010	During October 2011	During November 2011		
			Number	Percent of previous year	Percent of previous month
	(1,000 head)	(1,000 head)	(1,000 head)	(percent)	(percent)
Arizona .....	23	19	27	117	142
California .....	55	48	48	87	100
Colorado .....	150	155	145	97	94
Idaho .....	35	48	35	100	73
Iowa .....	90	125	95	106	76
Kansas .....	400	340	395	99	116
Nebraska .....	395	390	375	95	96
Oklahoma .....	63	63	61	97	97
South Dakota .....	36	39	41	114	105
Texas .....	440	465	450	102	97
Washington .....	36	40	43	119	108
Other States .....	51	64	55	108	86
United States .....	1,774	1,796	1,770	100	99

## Number of Cattle Marketed on 1,000+ Capacity Feedlots – United States

Million head



### Other Disappearance on 1,000+ Capacity Feedlots by Month – States and United States: 2010 and 2011

State	During November 2010 (1,000 head)	During October 2011 (1,000 head)	During November 2011		
			Number (1,000 head)	Percent of previous year (percent)	Percent of previous month (percent)
Arizona .....	1	1	1	100	100
California .....	4	5	5	125	100
Colorado .....	5	5	10	200	200
Idaho .....	2	2	1	50	50
Iowa .....	4	2	3	75	150
Kansas .....	15	20	20	133	100
Nebraska .....	10	15	15	150	100
Oklahoma .....	2	3	4	200	133
South Dakota .....	1	1	4	400	400
Texas .....	15	35	35	233	100
Washington .....	1	1	1	100	100
Other States .....	2	8	3	150	38
United States .....	62	98	102	165	104

## Terms and Definitions of Cattle on Feed Estimates

**Cattle on feed** are animals being fed a ration of grain, silage, hay and/or protein supplement for slaughter market that are expected to produce a carcass that will grade select or better. It excludes cattle being "backgrounded only" for later sale as feeders or later placement in another feedlot.

**Placements** are cattle put into a feedlot, fed a ration which will produce a carcass that will grade select or better, and are intended for the slaughter market.

**Marketings** are cattle shipped out of feedlots to a slaughter market.

**Other disappearance** includes death loss, movement from feedlots to pasture, and shipments to other feedlots for further feeding.

## Reliability of Cattle on Feed Estimates

**Survey Procedures:** During January and July all known feedlots in the United States with capacity of 1,000 or more head are surveyed to provide data for cattle on feed estimates. During the other months, all known feedlots from 16 States are surveyed. The 16 States account for approximately 98 percent of the cattle on feed in feedlots with capacity of 1,000 or more head. Individual State estimates are published monthly for 11 of the 16 States. Data collected from the remaining 5 States are used to establish the "Other States" estimates. These 5 States include Illinois, Minnesota, New Mexico, Oregon, and Wyoming. The "Other States" category represents all cattle on feed with a capacity of 1,000 or more head for the rest of the United States.

**Estimating Procedures:** These cattle on feed estimates were prepared by the Agricultural Statistics Board after reviewing recommendations and analysis submitted by each State office. Regional and State survey data were reviewed for reasonableness with each other and with estimates from the previous month when establishing the current estimates.

**Revision Policy:** Revisions to previous estimates are made to improve month to month relationships. Estimates for the previous month are subject to revision in all States each month when current estimates are made. In February, all monthly estimates for the previous year, and the number of feedlots and annual marketings from two years ago are reviewed and subject to revisions. The reviews are primarily based on slaughter data, state check-off or brand data, and any other data that may have been received after the original estimate was made. Estimates will also be reviewed after data from the Census of Agriculture are available. No revisions will be made after that date and estimates become final.

**Reliability:** Since all 1,000+ capacity cattle on feed operators in every State are not included in the monthly survey, survey estimates are subject to sampling variability. Survey results are also subject to non-sampling errors such as omissions, duplications, and mistakes in reporting, recording, and processing the data. The effects of these errors cannot be measured directly. They are minimized through rigid quality controls in the data collection process and through a careful review of all reported data for consistency and reasonableness.

To assist users in evaluating the reliability of estimates in this report, the "**Root Mean Square Error**" is shown for selected items in the table on the following page. The "Root Mean Square Error" is a statistical measure based on past performance and is computed using the differences between first and latest estimates. The "Root Mean Square Error" for cattle on feed inventory estimates over the past 24 months is 0.1 percent. This means that chances are 2 out of 3 that the final estimate will not be above or below the current estimate of 12.1 million head by more than 0.1 percent. Chances are 9 out of 10 that the difference will not exceed 0.2 percent.

The table on the following page shows a 24 month record of the range of differences between first and latest estimates for selected items. Using estimates of number on feed as an example, changes between the first estimate and the latest estimate during the past 24 months have averaged 10,000 head, ranging from 0 to 37,000 head. During this period the initial estimate has been above the latest estimate 11 times and has been below the latest estimate 10 times. This does not imply that the initial estimate is likely to understate or overstate final inventory.

## Reliability of Monthly Cattle on Feed Estimates

[Based on data for the past 24 months]

Item	Root mean square error	90 percent confidence level	Difference between first and latest estimate				
			Average	Smallest	Largest	Months	
						Below latest	Above latest
	(percent)	(percent)	(1,000)	(1,000)	(1,000)	(number)	(number)
Number on feed .....	0.1	0.2	11	0	37	10	11
Placements .....	0.4	0.7	4	0	20	12	7
Marketings .....	0.2	0.3	2	0	10	9	6

## Information Contacts

Listed below are the commodity specialists in the Livestock Branch of the National Agricultural Statistics Service to contact for additional information. E-mail inquiries may be sent to [nass@nass.usda.gov](mailto:nass@nass.usda.gov)

Dan Kerestes, Chief, Livestock Branch .....	(202) 720-3570
Scott Hollis, Head, Livestock Section .....	(202) 690-2424
Travis Averill – Cattle, Cattle on Feed .....	(202) 720-3040
Sherry Bertramsen – Livestock Slaughter .....	(515) 284-4340
Doug Bounds – Hogs and Pigs, Goats .....	(202) 720-3106
Mike Miller – Milk Production and Milk Cows .....	(202) 720-3278
Everett Olbert – Dairy Products Prices .....	(202) 720-4751
Lorie Warren – Dairy Products, Sheep .....	(202) 690-3236



## Access to NASS Reports

For your convenience, you may access NASS reports and products the following ways:

- All reports are available electronically, at no cost, on the NASS web site: <http://www.nass.usda.gov>
- Both national and state specific reports are available via a free e-mail subscription. To set-up this free subscription, visit <http://www.nass.usda.gov> and in the “Receive NASS Updates” box under “Receive reports by Email,” click on “National” or “State” to select the reports you would like to receive.
- Printed reports may be purchased from the National Technical Information Service (NTIS) by calling toll-free (800) 999-6779, or (703) 605-6220 if calling from outside the United States or Canada. Accepted methods of payment are Visa, MasterCard, check, or money order.

For more information on NASS surveys and reports, call the NASS Agricultural Statistics Hotline at (800) 727-9540, 7:30 a.m. to 4:00 p.m. ET, or e-mail: [nass@nass.usda.gov](mailto:nass@nass.usda.gov).

The United States Department of Agriculture (USDA) prohibits discrimination in all its programs and activities on the basis of race, color, national origin, age, disability, and where applicable, sex, marital status, familial status, parental status, religion, sexual orientation, political beliefs, genetic information, reprisal, or because all or a part of an individual's income is derived from any public assistance program. (Not all prohibited bases apply to all programs.) Persons with disabilities who require alternative means for communication of program information (Braille, large print, audiotape, etc.) should contact USDA's TARGET Center at (202) 720-2600 (voice and TDD).

To file a complaint of discrimination, write to USDA, Assistant Secretary for Civil Rights, Office of the Assistant Secretary for Civil Rights, 1400 Independence Avenue, S.W., Stop 9410, Washington, DC 20250-9410, or call toll-free at (866) 632-9992 (English) or (800) 877-8339 (TDD) or (866) 377-8642 (English Federal-relay) or (800) 845-6136 (Spanish Federal-relay). USDA is an equal opportunity provider and employer.