



Cattle on Feed

ISSN: 1948-9080

Released January 20, 2012, by the National Agricultural Statistics Service (NASS), Agricultural Statistics Board, United States Department of Agriculture (USDA).

United States Cattle on Feed Up 3 Percent

Cattle and calves on feed for slaughter market in the United States for feedlots with capacity of 1,000 or more head totaled 11.9 million head on January 1, 2012. The inventory was 3 percent above January 1, 2011. The inventory included 7.28 million steers and steer calves, up 1 percent from the previous year. This group accounted for 61 percent of the total inventory. Heifers and heifer calves accounted for 4.50 million head, up 6 percent from 2011.

Placements in feedlots during December totaled 1.68 million, 6 percent below 2010. Net placements were 1.59 million head. During December, placements of cattle and calves weighing less than 600 pounds were 550,000, 600-699 pounds were 390,000, 700-799 pounds were 365,000, and 800 pounds and greater were 378,000.

Marketings of fed cattle during December totaled 1.80 million, 2 percent below 2010.

Other disappearance totaled 91,000 during December, 40 percent above 2010.

Number of Cattle on Feed, Placements, Marketings, and Other Disappearance on 1,000+ Capacity Feedlots – United States: January 1, 2011 and 2012

Item	Number		Percent of previous year
	2011	2012	
	(1,000 head)	(1,000 head)	(percent)
On feed December 1	11,620	12,065	104
Placed on feed during December	1,789	1,683	94
Fed cattle marketed during December	1,830	1,796	98
Other disappearance during December	65	91	140
On feed January 1	11,514	11,861	103

Number of Cattle on Feed, Placements, Marketings, and Other Disappearance on 1,000+ Capacity Feedlots – United States: December 1, 2010 and 2011

Item	Number		Percent of previous year
	2010	2011	
	(1,000 head)	(1,000 head)	(percent)
On feed November 1	11,497	11,914	104
Placed on feed during November	1,959	2,035	104
Fed cattle marketed during November	1,774	1,782	100
Other disappearance during November	62	102	165
On feed December 1	11,620	12,065	104

Number on Feed by Class on 1,000+ Capacity Feedlots – United States: January 1, 2011 and 2012

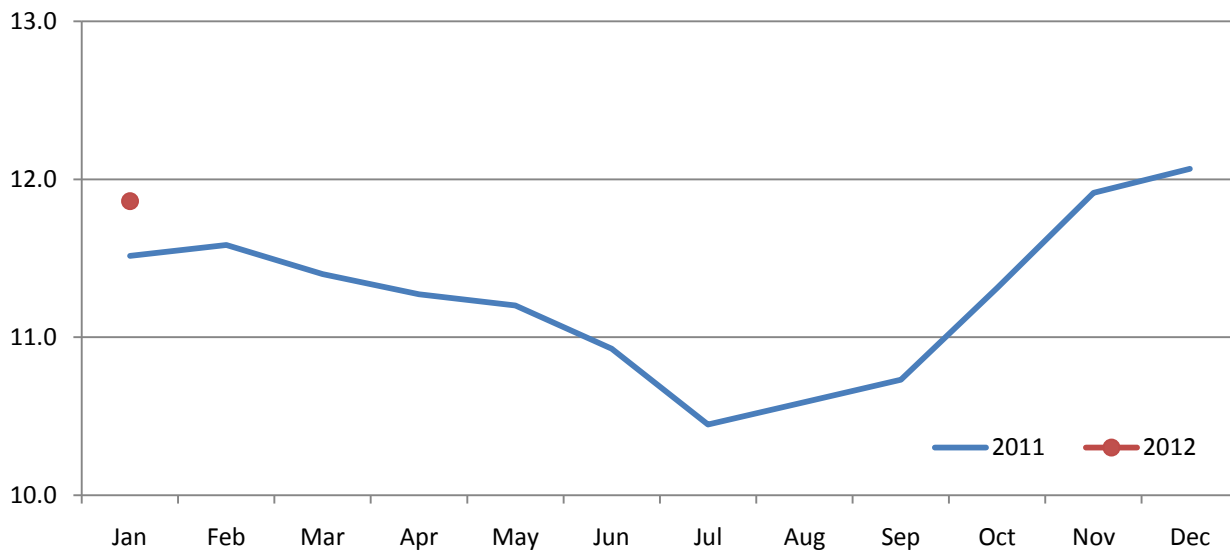
Item	Number		Percent of previous year
	2011	2012	
	(1,000 Head)	(1,000 Head)	(percent)
Class on Feed January 1			
Steers and Steer Calves	7,178	7,281	101
Heifers and Heifer Calves	4,259	4,496	106
Cows and Bulls	77	84	109

Number of Cattle on Feed on 1,000+ Capacity Feedlots by Month – States and United States: 2011 and 2012

State	January 1, 2011	December 1, 2011	January 1, 2012		
			Number	Percent of previous year	Percent of previous month
	(1,000 head)	(1,000 head)	(1,000 head)	(percent)	(percent)
Arizona	258	290	279	108	96
California	470	505	510	109	101
Colorado	1,080	1,160	1,150	106	99
Idaho	240	235	230	96	98
Iowa	640	610	620	97	102
Kansas	2,280	2,360	2,250	99	95
Nebraska	2,430	2,560	2,550	105	100
Oklahoma	375	385	375	100	97
South Dakota	260	265	260	100	98
Texas	2,840	3,000	2,940	104	98
Washington	209	236	232	111	98
Other States	432	459	465	108	101
United States	11,514	12,065	11,861	103	98

Cattle on Feed Inventory on 1,000+ Capacity Feedlots - United States

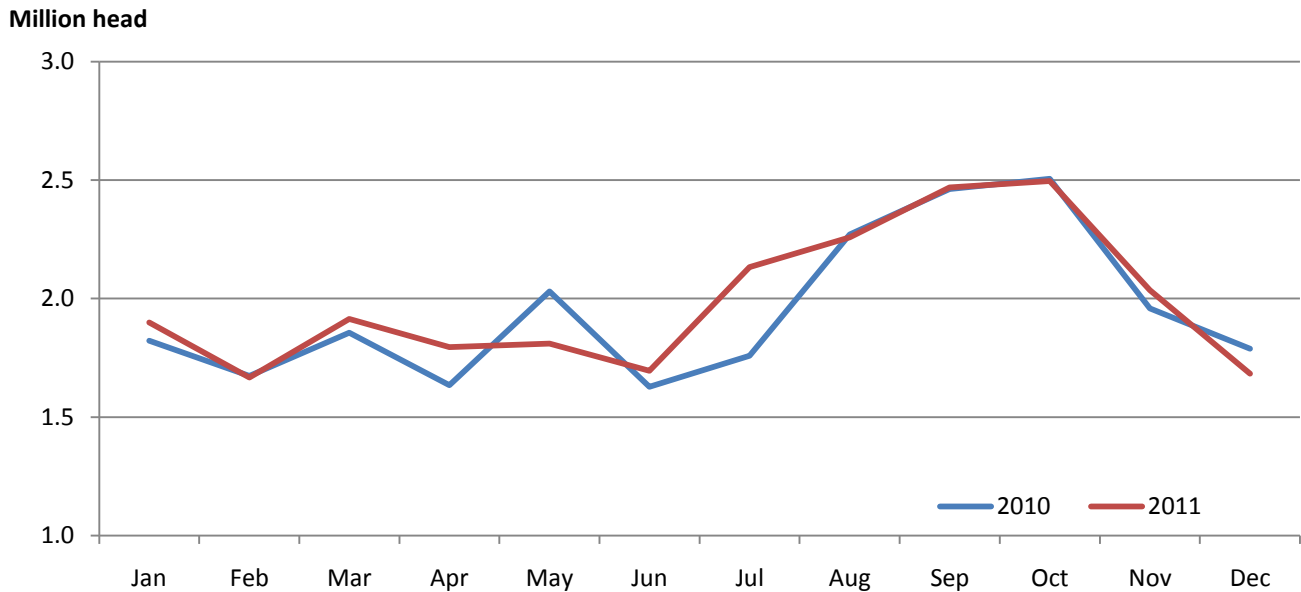
Million head



Number of Cattle Placed on Feed on 1,000+ Capacity Feedlots by Month – States and United States: 2010 and 2011

State	During December 2010 (1,000 head)	During November 2011 (1,000 head)	During December 2011		
			Number (1,000 head)	Percent of previous year (percent)	Percent of previous month (percent)
Arizona	36	27	26	72	96
California	61	64	61	100	95
Colorado	160	175	170	106	97
Idaho	42	46	36	86	78
Iowa	93	143	77	83	54
Kansas	410	375	350	85	93
Nebraska	380	480	380	100	79
Oklahoma	55	60	45	82	75
South Dakota	45	70	37	82	53
Texas	420	470	400	95	85
Washington	36	54	44	122	81
Other States	51	71	57	112	80
United States	1,789	2,035	1,683	94	83

Number of Cattle Placed on 1,000+ Capacity Feedlots - United States



Number of Cattle Placed on Feed by Weight Group on 1,000+ Capacity Feedlots by Month – States and United States: 2010 and 2011

State	During December									
	Under 600 lbs		600-699 lbs		700-799 lbs		800+ lbs		Total	
	2010	2011	2010	2011	2010	2011	2010	2011	2010	2011
	(1,000 head)	(1,000 head)	(1,000 head)	(1,000 head)	(1,000 head)	(1,000 head)	(1,000 head)	(1,000 head)	(1,000 head)	(1,000 head)
Colorado	30	50	50	40	40	35	40	45	160	170
Kansas	75	75	115	100	130	105	90	70	410	350
Nebraska	55	60	110	90	105	100	110	130	380	380
Texas	180	225	120	75	80	55	40	45	420	400
Other States	135	140	100	85	84	70	100	88	419	383
United States	475	550	495	390	439	365	380	378	1,789	1,683

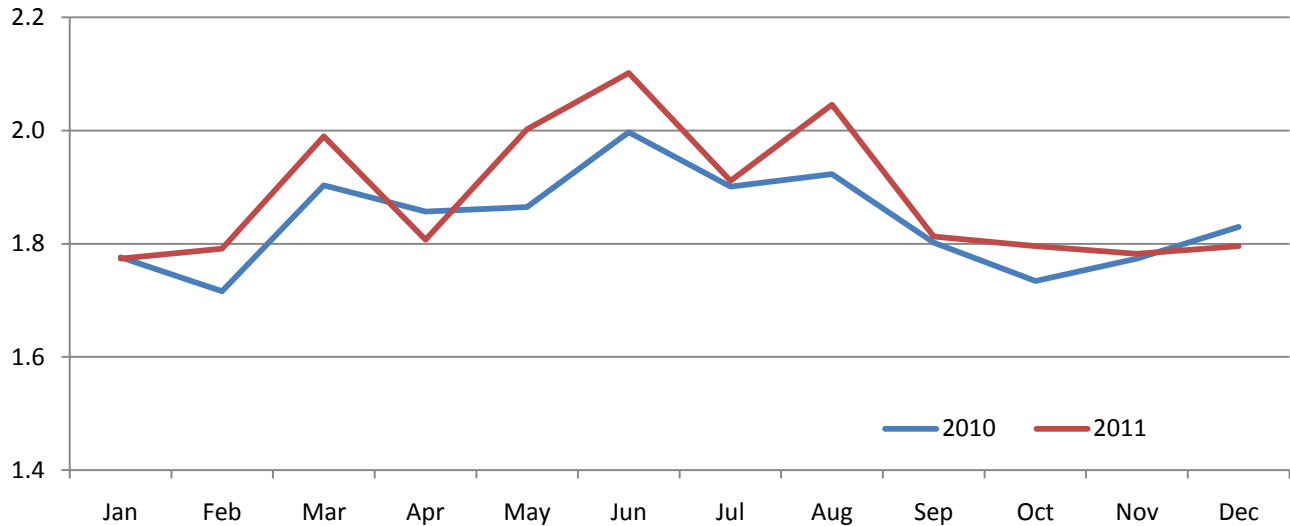
State	During November									
	Under 600 lbs		600-699 lbs		700-799 lbs		800+ lbs		Total	
	2010	2011	2010	2011	2010	2011	2010	2011	2010	2011
	(1,000 head)	(1,000 head)	(1,000 head)	(1,000 head)	(1,000 head)	(1,000 head)	(1,000 head)	(1,000 head)	(1,000 head)	(1,000 head)
Colorado	45	55	40	40	30	30	40	50	155	175
Kansas	80	85	105	100	120	120	70	70	375	375
Nebraska	110	130	160	135	65	85	110	130	445	480
Texas	195	270	145	100	85	60	50	40	475	470
Other States	195	210	140	125	74	80	100	120	509	535
United States	625	750	590	500	374	375	370	410	1,959	2,035

Number of Cattle Marketed on 1,000+ Capacity Feedlots by Month – States and United States: 2010 and 2011

State	During December 2010	During November 2011	During December 2011		
			Number	Percent of previous year	Percent of previous month
	(1,000 head)	(1,000 head)	(1,000 head)	(percent)	(percent)
Arizona	26	28	36	138	129
California	57	49	52	91	106
Colorado	165	145	170	103	117
Idaho	35	35	40	114	114
Iowa	80	100	63	79	63
Kansas	480	395	445	93	113
Nebraska	400	375	380	95	101
Oklahoma	58	61	52	90	85
South Dakota	39	41	37	95	90
Texas	400	455	430	108	95
Washington	39	43	45	115	105
Other States	51	55	46	90	84
United States	1,830	1,782	1,796	98	101

Number of Cattle Marketed on 1,000+ Capacity Feedlots - United States

Million head



Other Disappearance on 1,000+ Capacity Feedlots by Month – States and United States: 2010 and 2011

State	During December 2010 (1,000 head)	During November 2011 (1,000 head)	During December 2011		
			Number (1,000 head)	Percent of previous year (percent)	Percent of previous month (percent)
Arizona	1	1	1	100	100
California	4	5	4	100	80
Colorado	5	10	10	200	100
Idaho	2	1	1	50	100
Iowa	3	3	4	133	133
Kansas	10	20	15	150	75
Nebraska	10	15	10	100	67
Oklahoma	2	4	3	150	75
South Dakota	1	4	5	500	125
Texas	20	35	30	150	86
Washington	2	1	3	150	300
Other States	5	3	5	100	167
United States	65	102	91	140	89

Number on Feed by Class on 1,000+ Capacity Feedlots by Quarter – States and United States: 2011 and 2012

State	Steers and steer calves			Heifers and heifer calves			Cows and bulls		
	Jan 1, 2011	Oct 1, 2011	Jan 1, 2012	Jan 1, 2011	Oct 1, 2011	Jan 1, 2012	Jan 1, 2011	Oct 1, 2011	Jan 1, 2012
	(1,000 Head)	(1,000 Head)	(1,000 Head)	(1,000 Head)	(1,000 Head)	(1,000 Head)	(1,000 Head)	(1,000 Head)	(1,000 Head)
Arizona	255	277	276	3	3	3	0	0	0
California	405	425	440	65	63	69	0	2	1
Colorado	710	730	745	365	335	400	5	5	5
Idaho	116	136	123	108	82	106	16	2	1
Iowa	440	390	450	199	179	170	1	1	0
Kansas	1,220	1,220	1,160	1,055	1,090	1,085	5	10	5
Nebraska	1,520	1,290	1,530	895	905	980	15	15	40
Oklahoma	210	205	215	165	165	160	0	0	0
South Dakota	129	114	131	107	81	101	24	10	28
Texas	1,750	1,750	1,730	1,089	1,199	1,209	1	1	1
Washington	130	123	150	71	83	80	8	2	2
Other States	293	285	331	137	133	133	2	1	1
United States	7,178	6,945	7,281	4,259	4,318	4,496	77	49	84

Terms and Definitions of Cattle on Feed Estimates

Cattle on feed are animals being fed a ration of grain, silage, hay and/or protein supplement for slaughter market that are expected to produce a carcass that will grade select or better. It excludes cattle being "backgrounded only" for later sale as feeders or later placement in another feedlot.

Placements are cattle put into a feedlot, fed a ration which will produce a carcass that will grade select or better, and are intended for the slaughter market.

Marketings are cattle shipped out of feedlots to a slaughter market.

Other disappearance includes death loss, movement from feedlots to pasture, and shipments to other feedlots for further feeding.

Reliability of Cattle on Feed Estimates

Survey Procedures: During January and July all known feedlots in the United States with capacity of 1,000 or more head are surveyed to provide data for cattle on feed estimates. During the other months, all known feedlots from 16 States are surveyed. The 16 States account for approximately 98 percent of the cattle on feed in feedlots with capacity of 1,000 or more head. Individual State estimates are published monthly for 11 of the 16 States. Data collected from the remaining 5 States are used to establish the "Other States" estimates. These 5 States include Illinois, Minnesota, New Mexico, Oregon, and Wyoming. The "Other States" category represents all cattle on feed with a capacity of 1,000 or more head for the rest of the United States.

Estimating Procedures: These cattle on feed estimates were prepared by the Agricultural Statistics Board after reviewing recommendations and analysis submitted by each State office. Regional and State survey data were reviewed for reasonableness with each other and with estimates from the previous month when establishing the current estimates.

Revision Policy: Revisions to previous estimates are made to improve month to month relationships. Estimates for the previous month are subject to revision in all States each month when current estimates are made. In February, all monthly estimates for the previous year, and the number of feedlots and annual marketings from two years ago are reviewed and subject to revisions. The reviews are primarily based on slaughter data, state check-off or brand data, and any other data that may have been received after the original estimate was made. Estimates will also be reviewed after data from the Census of Agriculture are available. No revisions will be made after that date and estimates become final.

Reliability: Since all 1,000+ capacity cattle on feed operators in every State are not included in the monthly survey, survey estimates are subject to sampling variability. Survey results are also subject to non-sampling errors such as omissions, duplications, and mistakes in reporting, recording, and processing the data. The effects of these errors cannot be measured directly. They are minimized through rigid quality controls in the data collection process and through a careful review of all reported data for consistency and reasonableness.

To assist users in evaluating the reliability of estimates in this report, the "**Root Mean Square Error**" is shown for selected items in the table on the following page. The "Root Mean Square Error" is a statistical measure based on past performance and is computed using the differences between first and latest estimates. The "Root Mean Square Error" for cattle on feed inventory estimates over the past 24 months is 0.1 percent. This means that chances are 2 out of 3 that the final estimate will not be above or below the current estimate of 11.9 million head by more than 0.1 percent. Chances are 9 out of 10 that the difference will not exceed 0.2 percent.

The table on the following page shows a 24 month record of the range of differences between first and latest estimates for selected items. Using estimates of number on feed as an example, changes between the first estimate and the latest estimate during the past 24 months have averaged 10,000 head, ranging from 0 to 37,000 head. During this period the initial estimate has been above the latest estimate 11 times and has been below the latest estimate 10 times. This does not imply that the initial estimate is likely to understate or overstate final inventory.

Reliability of Monthly Cattle on Feed Estimates

[Based on data for the past 24 months]

Item	Root mean square error	90 percent confidence level	Difference between first and latest estimate				
			Average	Smallest	Largest	Months	
						Below latest	Above latest
	(percent)	(percent)	(1,000)	(1,000)	(1,000)	(number)	(number)
Number on feed	0.1	0.2	11	0	37	10	11
Placements	0.4	0.7	4	0	20	12	7
Marketings	0.2	0.4	2	0	12	9	6

Information Contacts

Listed below are the commodity specialists in the Livestock Branch of the National Agricultural Statistics Service to contact for additional information. E-mail inquiries may be sent to nass@nass.usda.gov

Dan Kerestes, Chief, Livestock Branch	(202) 720-3570
Scott Hollis, Head, Livestock Section	(202) 690-2424
Travis Averill – Cattle, Cattle on Feed.....	(202) 720-3040
Sherry Bertramsen – Livestock Slaughter	(515) 284-4340
Doug Bounds – Hogs and Pigs, Goats	(202) 720-3106
Mike Miller – Milk Production and Milk Cows	(202) 720-3278
Everett Olbert – Dairy Products Prices.....	(202) 720-4751
Lorie Warren – Dairy Products, Sheep	(202) 690-3236

Access to NASS Reports

For your convenience, you may access NASS reports and products the following ways:

- All reports are available electronically, at no cost, on the NASS web site: <http://www.nass.usda.gov>
- Both national and state specific reports are available via a free e-mail subscription. To set-up this free subscription, visit <http://www.nass.usda.gov> and in the “Receive NASS Updates” box under “Receive reports by Email,” click on “National” or “State” to select the reports you would like to receive.
- Printed reports may be purchased from the National Technical Information Service (NTIS) by calling toll-free (800) 999-6779, or (703) 605-6220 if calling from outside the United States or Canada. Accepted methods of payment are Visa, MasterCard, check, or money order.

For more information on NASS surveys and reports, call the NASS Agricultural Statistics Hotline at (800) 727-9540, 7:30 a.m. to 4:00 p.m. ET, or e-mail: nass@nass.usda.gov.

The United States Department of Agriculture (USDA) prohibits discrimination in all its programs and activities on the basis of race, color, national origin, age, disability, and where applicable, sex, marital status, familial status, parental status, religion, sexual orientation, political beliefs, genetic information, reprisal, or because all or a part of an individual's income is derived from any public assistance program. (Not all prohibited bases apply to all programs.) Persons with disabilities who require alternative means for communication of program information (Braille, large print, audiotape, etc.) should contact USDA's TARGET Center at (202) 720-2600 (voice and TDD).

To file a complaint of discrimination, write to USDA, Assistant Secretary for Civil Rights, Office of the Assistant Secretary for Civil Rights, 1400 Independence Avenue, S.W., Stop 9410, Washington, DC 20250-9410, or call toll-free at (866) 632-9992 (English) or (800) 877-8339 (TDD) or (866) 377-8642 (English Federal-relay) or (800) 845-6136 (Spanish Federal-relay). USDA is an equal opportunity provider and employer.



United States Department of Agriculture



Moving Agriculture Forward

USDA – Growing, Innovating, and Celebrating 150 Years

February 23-24, 2012
Crystal Gateway Marriott Hotel • Arlington, Virginia

Early Registration \$375 until January 23, 2012

\$425 after January 23

To register, go to:

www.usda.gov/oce/forum

— more than 80 speakers —
Program at a Glance is available online