



Cattle on Feed

ISSN: 1948-9080

Released August 17, 2012, by the National Agricultural Statistics Service (NASS), Agricultural Statistics Board, United States Department of Agriculture (USDA).

United States Cattle on Feed Up 1 Percent

Cattle and calves on feed for slaughter market in the United States for feedlots with capacity of 1,000 or more head totaled 10.7 million head on August 1, 2012. The inventory was 1 percent above August 1, 2011.

Placements in feedlots during July totaled 1.92 million, 10 percent below 2011. Net placements were 1.86 million head. During July, placements of cattle and calves weighing less than 600 pounds were 500,000, 600-699 pounds were 325,000, 700-799 pounds were 470,000, and 800 pounds and greater were 627,000.

Marketings of fed cattle during July totaled 1.91 million, slightly below 2011.

Other disappearance totaled 63,000 during July, 11 percent below 2011.

Number of Cattle on Feed, Placements, Marketings, and Other Disappearance on 1,000+ Capacity Feedlots – United States: August 1, 2011 and 2012

Item	Number		Percent of previous year
	2011	2012	
	(1,000 head)	(1,000 head)	(percent)
On feed July 1	10,433	10,710	103
Placed on feed during July	2,135	1,922	90
Fed cattle marketed during July	1,918	1,913	100
Other disappearance during July	71	63	89
On feed August 1	10,579	10,656	101

Number of Cattle on Feed, Placements, Marketings, and Other Disappearance on 1,000+ Capacity Feedlots – United States: July 1, 2011 and 2012

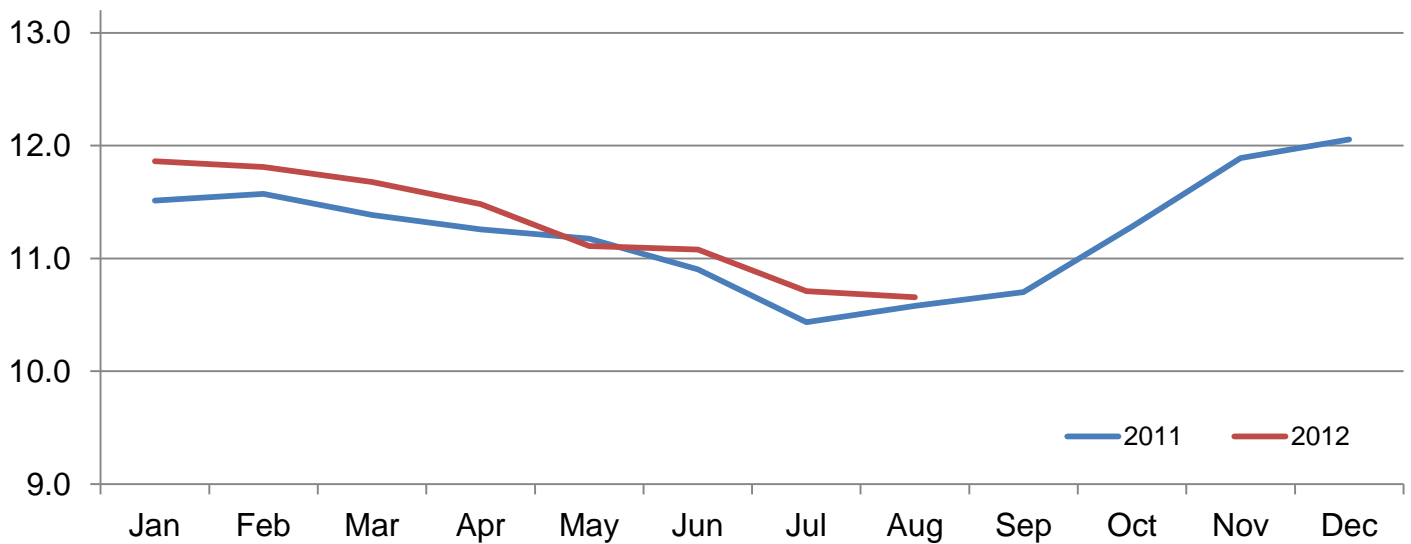
Item	Number		Percent of previous year
	2011	2012	
	(1,000 head)	(1,000 head)	(percent)
On feed June 1	10,902	11,077	102
Placed on feed during June	1,695	1,664	98
Fed cattle marketed during June	2,092	1,965	94
Other disappearance during June	72	66	92
On feed July 1	10,433	10,710	103

Number of Cattle on Feed on 1,000+ Capacity Feedlots by Month – States and United States: 2011 and 2012

State	August 1, 2011	July 1, 2012	August 1, 2012		
			Number	Percent of previous year	Percent of previous month
	(1,000 head)	(1,000 head)	(1,000 head)	(percent)	(percent)
Arizona	287	279	274	95	98
California	480	480	475	99	99
Colorado	970	970	940	97	97
Idaho	195	200	190	97	95
Iowa	550	620	600	109	97
Kansas	2,180	2,050	2,160	99	105
Nebraska	1,980	2,270	2,230	113	98
Oklahoma	360	320	320	89	100
South Dakota	195	210	190	97	90
Texas	2,830	2,670	2,650	94	99
Washington	190	210	210	111	100
Other States	362	431	417	115	97
United States	10,579	10,710	10,656	101	99

Cattle on Feed Inventory on 1,000+ Capacity Feedlots – United States

Million head

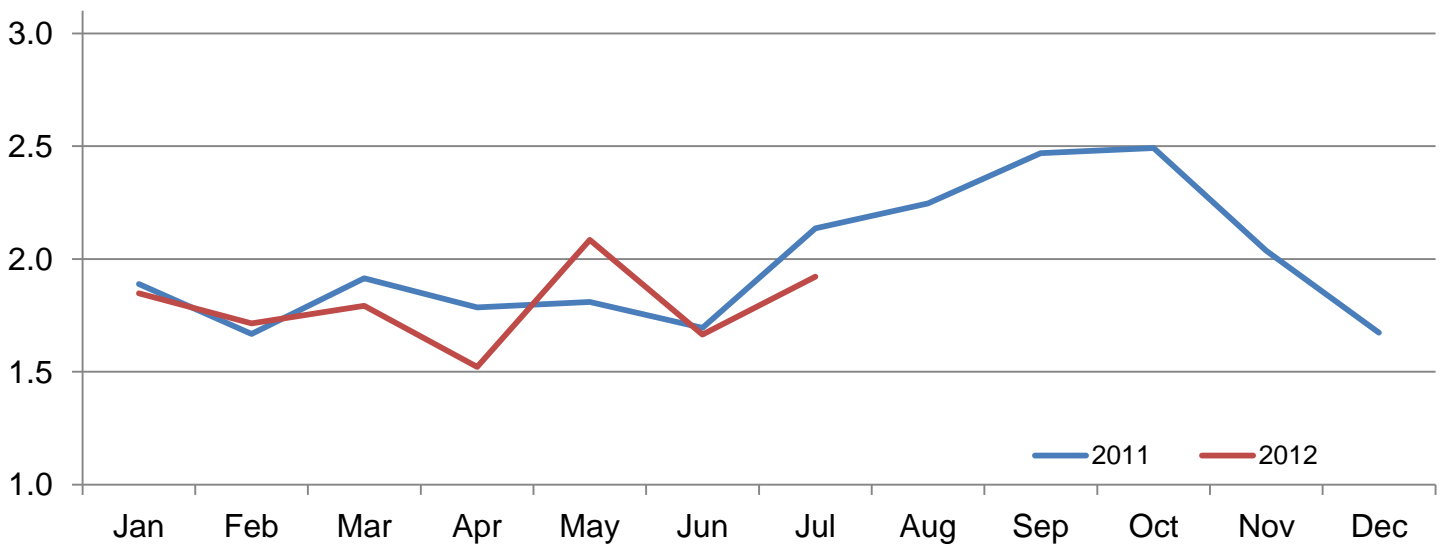


Number of Cattle Placed on Feed on 1,000+ Capacity Feedlots by Month – States and United States: 2011 and 2012

State	During July 2011	During June 2012	During July 2012		
			Number	Percent of previous year	Percent of previous month
	(1,000 head)	(1,000 head)	(1,000 head)	(percent)	(percent)
Arizona	24	28	22	92	79
California	62	49	52	84	106
Colorado	170	125	155	91	124
Idaho	24	34	35	146	103
Iowa	55	61	52	95	85
Kansas	580	390	540	93	138
Nebraska	390	385	410	105	106
Oklahoma	86	53	68	79	128
South Dakota	22	28	20	91	71
Texas	630	420	475	75	113
Washington	42	36	40	95	111
Other States	50	55	53	106	96
United States	2,135	1,664	1,922	90	116

Number of Cattle Placed on 1,000+ Capacity Feedlots – United States

Million head



Number of Cattle Placed on Feed by Weight Group on 1,000+ Capacity Feedlots by Month – States and United States: 2011 and 2012

State	During July									
	Under 600 lbs		600-699 lbs		700-799 lbs		800+ lbs		Total	
	2011	2012	2011	2012	2011	2012	2011	2012	2011	2012
	(1,000 head)	(1,000 head)	(1,000 head)	(1,000 head)	(1,000 head)	(1,000 head)	(1,000 head)	(1,000 head)	(1,000 head)	(1,000 head)
Colorado	45	25	25	20	40	40	60	70	170	155
Kansas	95	85	115	105	190	180	180	170	580	540
Nebraska	60	70	70	70	100	90	160	180	390	410
Texas	300	225	140	85	95	100	95	65	630	475
Other States	120	95	50	45	70	60	125	142	365	342
United States	620	500	400	325	495	470	620	627	2,135	1,922

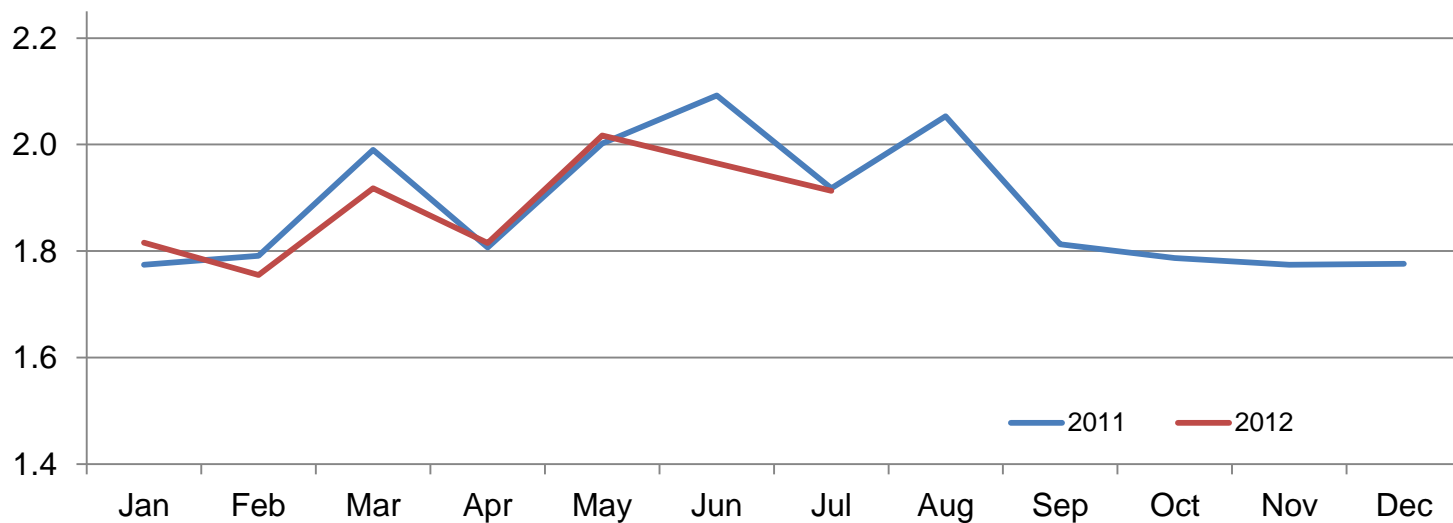
State	During June									
	Under 600 lbs		600-699 lbs		700-799 lbs		800+ lbs		Total	
	2011	2012	2011	2012	2011	2012	2011	2012	2011	2012
	(1,000 head)	(1,000 head)	(1,000 head)	(1,000 head)	(1,000 head)	(1,000 head)	(1,000 head)	(1,000 head)	(1,000 head)	(1,000 head)
Colorado	20	25	25	20	30	40	30	40	105	125
Kansas	75	95	95	80	120	110	100	105	390	390
Nebraska	50	70	60	70	70	90	130	155	310	385
Texas	210	180	130	100	120	75	40	65	500	420
Other States	105	90	70	50	80	75	135	129	390	344
United States	460	460	380	320	420	390	435	494	1,695	1,664

Number of Cattle Marketed on 1,000+ Capacity Feedlots by Month – States and United States: 2011 and 2012

State	During July 2011	During June 2012	During July 2012		
			Number	Percent of previous year	Percent of previous month
	(1,000 head)	(1,000 head)	(1,000 head)	(percent)	(percent)
Arizona	23	30	26	113	87
California	48	56	54	113	96
Colorado	195	170	180	92	106
Idaho	41	43	44	107	102
Iowa	93	77	70	75	91
Kansas	420	415	415	99	100
Nebraska	415	465	440	106	95
Oklahoma	74	51	66	89	129
South Dakota	35	47	39	111	83
Texas	470	500	475	101	95
Washington	41	45	39	95	87
Other States	63	66	65	103	98
United States	1,918	1,965	1,913	100	97

Number of Cattle Marketed on 1,000+ Capacity Feedlots – United States

Million head



Other Disappearance on 1,000+ Capacity Feedlots by Month – States and United States: 2011 and 2012

State	During July 2011 (1,000 head)	During June 2012 (1,000 head)	During July 2012		
			Number (1,000 head)	Percent of previous year (percent)	Percent of previous month (percent)
Arizona	1	1	1	100	100
California	4	3	3	75	100
Colorado	5	5	5	100	100
Idaho	3	1	1	33	100
Iowa	2	4	2	100	50
Kansas	10	15	15	150	100
Nebraska	15	10	10	67	100
Oklahoma	2	2	2	100	100
South Dakota	2	1	1	50	100
Texas	20	20	20	100	100
Washington	3	1	1	33	100
Other States	4	3	2	50	67
United States	71	66	63	89	95

Terms and Definitions of Cattle on Feed Estimates

Cattle on feed are animals being fed a ration of grain, silage, hay and/or protein supplement for slaughter market that are expected to produce a carcass that will grade select or better. It excludes cattle being "backgrounded only" for later sale as feeders or later placement in another feedlot.

Placements are cattle put into a feedlot, fed a ration which will produce a carcass that will grade select or better, and are intended for the slaughter market.

Marketings are cattle shipped out of feedlots to a slaughter market.

Other disappearance includes death loss, movement from feedlots to pasture, and shipments to other feedlots for further feeding.

Reliability of Cattle on Feed Estimates

Survey Procedures: During January and July all known feedlots in the United States with capacity of 1,000 or more head are surveyed to provide data for cattle on feed estimates. During the other months, all known feedlots from 16 States are surveyed. The 16 States account for approximately 98 percent of the cattle on feed in feedlots with capacity of 1,000 or more head. Individual State estimates are published monthly for 11 of the 16 States. Data collected from the remaining 5 States are used to establish the "Other States" estimates. These 5 States include Illinois, Minnesota, New Mexico, Oregon, and Wyoming. The "Other States" category represents all cattle on feed with a capacity of 1,000 or more head for the rest of the United States.

Estimating Procedures: These cattle on feed estimates were prepared by the Agricultural Statistics Board after reviewing recommendations and analysis submitted by each State office. Regional and State survey data were reviewed for reasonableness with each other and with estimates from the previous month when establishing the current estimates.

Revision Policy: Revisions to previous estimates are made to improve month to month relationships. Estimates for the previous month are subject to revision in all States each month when current estimates are made. In February, all monthly estimates for the previous year, and the number of feedlots and annual marketings from two years ago are reviewed and subject to revisions. The reviews are primarily based on slaughter data, state check-off or brand data, and any other data that may have been received after the original estimate was made. Estimates will also be reviewed after data from the Census of Agriculture are available. No revisions will be made after that date and estimates become final.

Reliability: Since all 1,000+ capacity cattle on feed operators in every State are not included in the monthly survey, survey estimates are subject to sampling variability. Survey results are also subject to non-sampling errors such as omissions, duplications, and mistakes in reporting, recording, and processing the data. The effects of these errors cannot be measured directly. They are minimized through rigid quality controls in the data collection process and through a careful review of all reported data for consistency and reasonableness.

To assist users in evaluating the reliability of estimates in this report, the "**Root Mean Square Error**" is shown for selected items in the table on the following page. The "Root Mean Square Error" is a statistical measure based on past performance and is computed using the differences between first and latest estimates. The "Root Mean Square Error" for cattle on feed inventory estimates over the past 24 months is 0.2 percent. This means that chances are 2 out of 3 that the final estimate will not be above or below the current estimate of 10.7 million head by more than 0.1 percent. Chances are 9 out of 10 that the difference will not exceed 0.3 percent.

The table on the following page shows a 24 month record of the range of differences between first and latest estimates for selected items. Using estimates of number on feed as an example, changes between the first estimate and the latest estimate during the past 24 months have averaged 13,000 head, ranging from 0 to 47,000 head. During this period the initial estimate has been above the latest estimate 13 times and has been below the latest estimate 5 times. This does not imply that the initial estimate is likely to understate or overstate final inventory.

Reliability of Monthly Cattle on Feed Estimates

[[Based on data for the past 24 months]]

Item	Root mean square error	90 percent confidence level	Difference between first and latest estimate				
			Average	Smallest	Largest	Months	
						Below latest	Above latest
	(percent)	(percent)	(1,000)	(1,000)	(1,000)	(number)	(number)
Number on feed	0.2	0.3	13	0	47	5	13
Placements	0.3	0.5	3	0	18	7	9
Marketings	0.3	0.5	3	0	20	7	5

Information Contacts

Listed below are the commodity specialists in the Livestock Branch of the National Agricultural Statistics Service to contact for additional information. E-mail inquiries may be sent to nass@nass.usda.gov

Dan Kerestes, Chief, Livestock Branch	(202) 720-3570
Scott Hollis, Head, Livestock Section	(202) 690-2424
Travis Averill – Cattle, Cattle on Feed	(202) 720-3040
Sherry Bertramsen – Livestock Slaughter	(515) 284-4340
Doug Bounds – Hogs and Pigs	(202) 720-3106
Donnie Fike – Dairy Products	(202) 690-3236
Mike Miller – Milk Production and Milk Cows	(202) 720-3278
Alissa Cowell-Mytar – Sheep and Goats	(202) 720-4751

Access to NASS Reports

For your convenience, you may access NASS reports and products the following ways:

- All reports are available electronically, at no cost, on the NASS web site: <http://www.nass.usda.gov>
- Both national and state specific reports are available via a free e-mail subscription. To set-up this free subscription, visit <http://www.nass.usda.gov> and in the “Follow NASS” box under “Receive reports by Email,” click on “National” or “State” to select the reports you would like to receive.
- Printed reports may be purchased from the National Technical Information Service (NTIS) by calling toll-free (800) 999-6779, or (703) 605-6220 if calling from outside the United States or Canada. Accepted methods of payment are Visa, MasterCard, check, or money order.

For more information on NASS surveys and reports, call the NASS Agricultural Statistics Hotline at (800) 727-9540, 7:30 a.m. to 4:00 p.m. ET, or e-mail: nass@nass.usda.gov.

The United States Department of Agriculture (USDA) prohibits discrimination in all its programs and activities on the basis of race, color, national origin, age, disability, and where applicable, sex, marital status, familial status, parental status, religion, sexual orientation, political beliefs, genetic information, reprisal, or because all or a part of an individual's income is derived from any public assistance program. (Not all prohibited bases apply to all programs.) Persons with disabilities who require alternative means for communication of program information (Braille, large print, audiotape, etc.) should contact USDA's TARGET Center at (202) 720-2600 (voice and TDD).

To file a complaint of discrimination, write to USDA, Assistant Secretary for Civil Rights, Office of the Assistant Secretary for Civil Rights, 1400 Independence Avenue, S.W., Stop 9410, Washington, DC 20250-9410, or call toll-free at (866) 632-9992 (English) or (800) 877-8339 (TDD) or (866) 377-8642 (English Federal-relay) or (800) 845-6136 (Spanish Federal-relay). USDA is an equal opportunity provider and employer.