



# Cattle on Feed

ISSN: 1948-9080

---

Released September 21, 2012, by the National Agricultural Statistics Service (NASS), Agricultural Statistics Board, United States Department of Agriculture (USDA).

## United States Cattle on Feed Down 1 Percent

**Cattle and calves on feed** for slaughter market in the United States for feedlots with capacity of 1,000 or more head totaled 10.6 million head on September 1, 2012. The inventory was 1 percent below September 1, 2011.

**Placements** in feedlots during August totaled 2.00 million, 11 percent below 2011. This is the second lowest cattle placements for the month of August since the series began in 1996. Net placements were 1.94 million head. During August, placements of cattle and calves weighing less than 600 pounds were 482,000, 600-699 pounds were 385,000, 700-799 pounds were 475,000, and 800 pounds and greater were 660,000.

**Marketings** of fed cattle during August totaled 1.96 million, 5 percent below 2011.

**Other disappearance** totaled 61,000 during August, 15 percent below 2011.

**Number of Cattle on Feed, Placements, Marketings, and Other Disappearance on 1,000+ Capacity Feedlots – United States: September 1, 2011 and 2012**

Item	Number		Percent of previous year
	2011	2012	
	(1,000 head)	(1,000 head)	(percent)
On feed August 1 .....	10,579	10,656	101
Placed on feed during August .....	2,246	2,002	89
Fed cattle marketed during August .....	2,053	1,960	95
Other disappearance during August .....	72	61	85
On feed September 1 .....	10,700	10,637	99

**Number of Cattle on Feed, Placements, Marketings, and Other Disappearance on 1,000+ Capacity Feedlots – United States: August 1, 2011 and 2012**

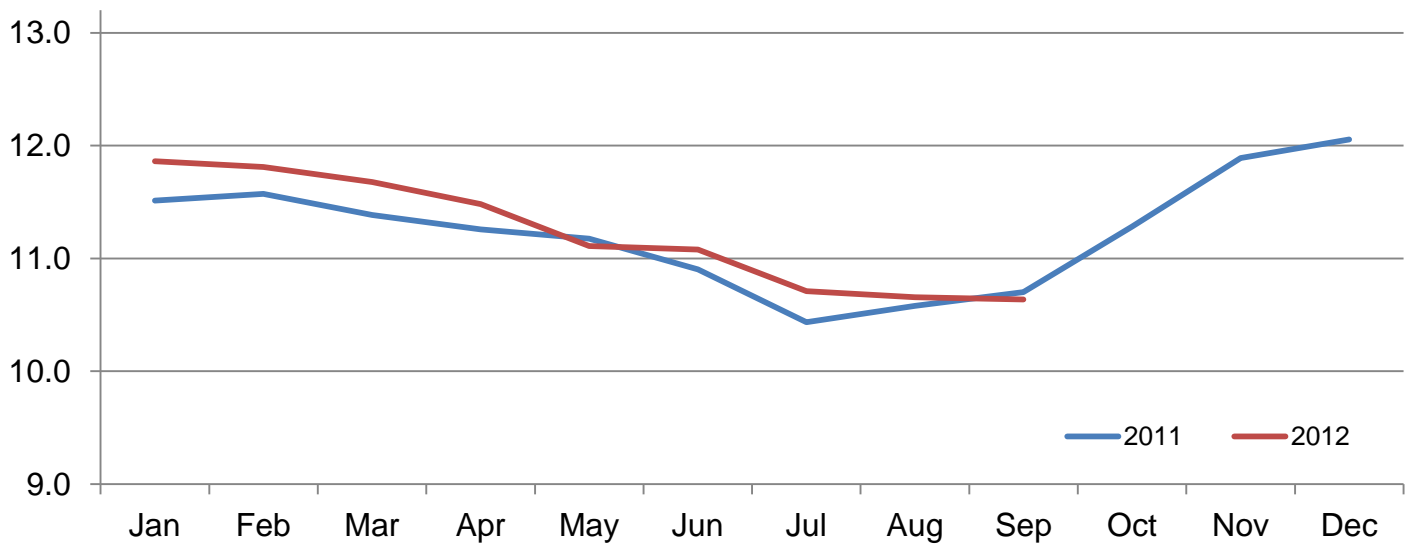
Item	Number		Percent of previous year
	2011	2012	
	(1,000 head)	(1,000 head)	(percent)
On feed July 1 .....	10,433	10,710	103
Placed on feed during July .....	2,135	1,922	90
Fed cattle marketed during July .....	1,918	1,913	100
Other disappearance during July .....	71	63	89
On feed August 1 .....	10,579	10,656	101

**Number of Cattle on Feed on 1,000+ Capacity Feedlots by Month – States and United States: 2011 and 2012**

State	September 1, 2011	August 1, 2012	September 1, 2012		
			Number	Percent of previous year	Percent of previous month
	(1,000 head)	(1,000 head)	(1,000 head)	(percent)	(percent)
Arizona .....	283	274	271	96	99
California .....	475	475	480	101	101
Colorado .....	990	940	930	94	99
Idaho .....	195	190	205	105	108
Iowa .....	530	600	590	111	98
Kansas .....	2,210	2,160	2,170	98	100
Nebraska .....	2,010	2,230	2,240	111	100
Oklahoma .....	365	320	325	89	102
South Dakota .....	190	190	185	97	97
Texas .....	2,890	2,650	2,620	91	99
Washington .....	193	210	208	108	99
Other States .....	369	417	413	112	99
United States .....	10,700	10,656	10,637	99	100

**Cattle on Feed Inventory on 1,000+ Capacity Feedlots – United States**

Million head

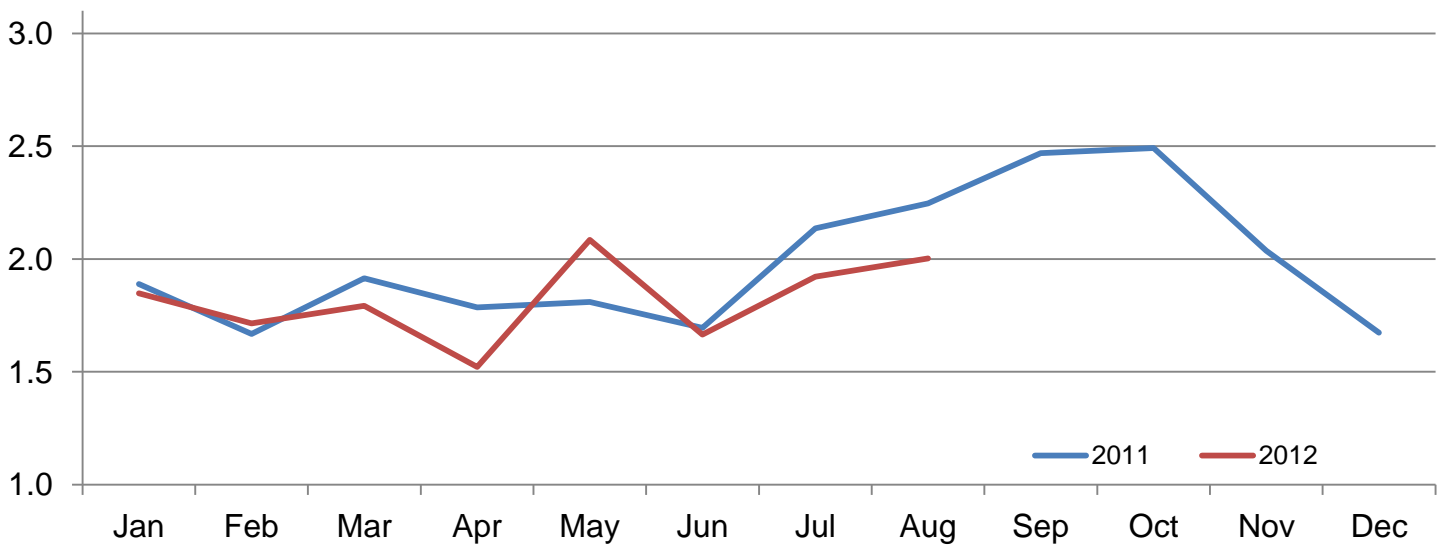


**Number of Cattle Placed on Feed on 1,000+ Capacity Feedlots by Month – States and United States: 2011 and 2012**

State	During August 2011 (1,000 head)	During July 2012 (1,000 head)	During August 2012		
			Number (1,000 head)	Percent of previous year (percent)	Percent of previous month (percent)
Arizona .....	19	22	18	95	82
California .....	56	52	63	113	121
Colorado .....	230	155	190	83	123
Idaho .....	43	35	53	123	151
Iowa .....	77	52	76	99	146
Kansas .....	520	540	430	83	80
Nebraska .....	445	410	470	106	115
Oklahoma .....	75	68	67	89	99
South Dakota .....	45	20	34	76	170
Texas .....	620	475	495	80	104
Washington .....	48	40	47	98	118
Other States .....	68	53	59	87	111
United States .....	2,246	1,922	2,002	89	104

**Number of Cattle Placed on 1,000+ Capacity Feedlots – United States**

Million head



**Number of Cattle Placed on Feed by Weight Group on 1,000+ Capacity Feedlots by Month – States and United States: 2011 and 2012**

State	During August									
	Under 600 lbs		600-699 lbs		700-799 lbs		800+ lbs		Total	
	2011	2012	2011	2012	2011	2012	2011	2012	2011	2012
	(1,000 head)	(1,000 head)	(1,000 head)	(1,000 head)	(1,000 head)	(1,000 head)	(1,000 head)	(1,000 head)	(1,000 head)	(1,000 head)
Colorado .....	45	30	30	25	45	50	110	85	230	190
Kansas .....	105	80	105	105	165	120	145	125	520	430
Nebraska .....	90	70	65	75	100	120	190	205	445	470
Texas .....	365	200	115	120	85	110	55	65	620	495
Other States .....	110	102	50	60	81	75	190	180	431	417
United States .....	715	482	365	385	476	475	690	660	2,246	2,002

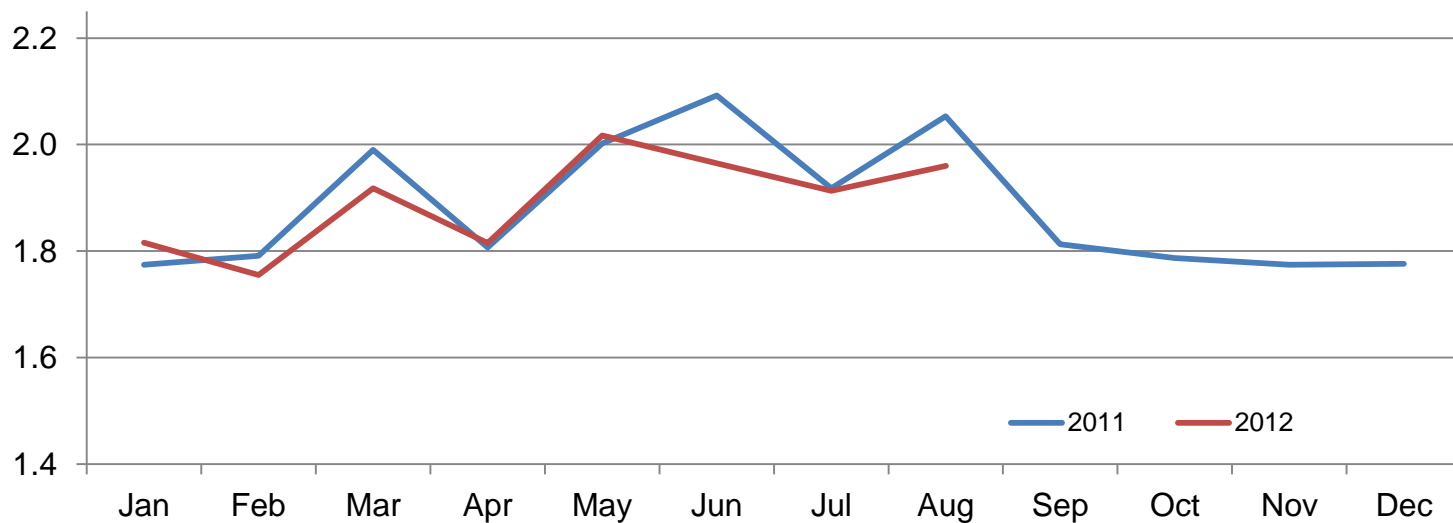
State	During July									
	Under 600 lbs		600-699 lbs		700-799 lbs		800+ lbs		Total	
	2011	2012	2011	2012	2011	2012	2011	2012	2011	2012
	(1,000 head)	(1,000 head)	(1,000 head)	(1,000 head)	(1,000 head)	(1,000 head)	(1,000 head)	(1,000 head)	(1,000 head)	(1,000 head)
Colorado .....	45	25	25	20	40	40	60	70	170	155
Kansas .....	95	85	115	105	190	180	180	170	580	540
Nebraska .....	60	70	70	70	100	90	160	180	390	410
Texas .....	300	225	140	85	95	100	95	65	630	475
Other States .....	120	95	50	45	70	60	125	142	365	342
United States .....	620	500	400	325	495	470	620	627	2,135	1,922

**Number of Cattle Marketed on 1,000+ Capacity Feedlots by Month – States and United States: 2011 and 2012**

State	During August 2011	During July 2012	During August 2012		
			Number	Percent of previous year	Percent of previous month
	(1,000 head)	(1,000 head)	(1,000 head)	(percent)	(percent)
Arizona .....	22	26	20	91	77
California .....	56	54	55	98	102
Colorado .....	205	180	195	95	108
Idaho .....	42	44	37	88	84
Iowa .....	95	70	84	88	120
Kansas .....	475	415	410	86	99
Nebraska .....	400	440	445	111	101
Oklahoma .....	67	66	60	90	91
South Dakota .....	48	39	38	79	97
Texas .....	540	475	510	94	107
Washington .....	44	39	48	109	123
Other States .....	59	65	58	98	89
United States .....	2,053	1,913	1,960	95	102

## Number of Cattle Marketed on 1,000+ Capacity Feedlots – United States

Million head



### Other Disappearance on 1,000+ Capacity Feedlots by Month – States and United States: 2011 and 2012

State	During August 2011 (1,000 head)	During July 2012 (1,000 head)	During August 2012		
			Number (1,000 head)	Percent of previous year (percent)	Percent of previous month (percent)
Arizona .....	1	1	1	100	100
California .....	5	3	3	60	100
Colorado .....	5	5	5	100	100
Idaho .....	1	1	1	100	100
Iowa .....	2	2	2	100	100
Kansas .....	15	15	10	67	67
Nebraska .....	15	10	15	100	150
Oklahoma .....	3	2	2	67	100
South Dakota .....	2	1	1	50	100
Texas .....	20	20	15	75	75
Washington .....	1	1	1	100	100
Other States .....	2	2	5	250	250
United States .....	72	63	61	85	97

## Terms and Definitions of Cattle on Feed Estimates

**Cattle on feed** are animals being fed a ration of grain, silage, hay and/or protein supplement for slaughter market that are expected to produce a carcass that will grade select or better. It excludes cattle being "backgrounded only" for later sale as feeders or later placement in another feedlot.

**Placements** are cattle put into a feedlot, fed a ration which will produce a carcass that will grade select or better, and are intended for the slaughter market.

**Marketings** are cattle shipped out of feedlots to a slaughter market.

**Other disappearance** includes death loss, movement from feedlots to pasture, and shipments to other feedlots for further feeding.

## Reliability of Cattle on Feed Estimates

**Survey Procedures:** During January and July all known feedlots in the United States with capacity of 1,000 or more head are surveyed to provide data for cattle on feed estimates. During the other months, all known feedlots from 16 States are surveyed. The 16 States account for approximately 98 percent of the cattle on feed in feedlots with capacity of 1,000 or more head. Individual State estimates are published monthly for 11 of the 16 States. Data collected from the remaining 5 States are used to establish the "Other States" estimates. These 5 States include Illinois, Minnesota, New Mexico, Oregon, and Wyoming. The "Other States" category represents all cattle on feed with a capacity of 1,000 or more head for the rest of the United States.

**Estimating Procedures:** These cattle on feed estimates were prepared by the Agricultural Statistics Board after reviewing recommendations and analysis submitted by each State office. Regional and State survey data were reviewed for reasonableness with each other and with estimates from the previous month when establishing the current estimates.

**Revision Policy:** Revisions to previous estimates are made to improve month to month relationships. Estimates for the previous month are subject to revision in all States each month when current estimates are made. In February, all monthly estimates for the previous year, and the number of feedlots and annual marketings from two years ago are reviewed and subject to revisions. The reviews are primarily based on slaughter data, state check-off or brand data, and any other data that may have been received after the original estimate was made. Estimates will also be reviewed after data from the Census of Agriculture are available. No revisions will be made after that date and estimates become final.

**Reliability:** Since all 1,000+ capacity cattle on feed operators in every State are not included in the monthly survey, survey estimates are subject to sampling variability. Survey results are also subject to non-sampling errors such as omissions, duplications, and mistakes in reporting, recording, and processing the data. The effects of these errors cannot be measured directly. They are minimized through rigid quality controls in the data collection process and through a careful review of all reported data for consistency and reasonableness.

To assist users in evaluating the reliability of estimates in this report, the "**Root Mean Square Error**" is shown for selected items in the table on the following page. The "Root Mean Square Error" is a statistical measure based on past performance and is computed using the differences between first and latest estimates. The "Root Mean Square Error" for cattle on feed inventory estimates over the past 24 months is 0.2 percent. This means that chances are 2 out of 3 that the final estimate will not be above or below the current estimate of 10.6 million head by more than 0.1 percent. Chances are 9 out of 10 that the difference will not exceed 0.3 percent.

The table on the following page shows a 24 month record of the range of differences between first and latest estimates for selected items. Using estimates of number on feed as an example, changes between the first estimate and the latest estimate during the past 24 months have averaged 13,000 head, ranging from 0 to 47,000 head. During this period the initial estimate has been above the latest estimate 13 times and has been below the latest estimate 4 times. This does not imply that the initial estimate is likely to understate or overstate final inventory.

## Reliability of Monthly Cattle on Feed Estimates

[[Based on data for the past 24 months]]

Item	Root mean square error	90 percent confidence level	Difference between first and latest estimate				
			Average	Smallest	Largest	Months	
						Below latest	Above latest
	(percent)	(percent)	(1,000)	(1,000)	(1,000)	(number)	(number)
Number on feed .....	0.2	0.3	13	0	47	4	13
Placements .....	0.3	0.5	3	0	18	6	9
Marketings .....	0.3	0.5	3	0	20	7	4

## Information Contacts

Listed below are the commodity specialists in the Livestock Branch of the National Agricultural Statistics Service to contact for additional information. E-mail inquiries may be sent to [nass@nass.usda.gov](mailto:nass@nass.usda.gov)

Dan Kerestes, Chief, Livestock Branch .....	(202) 720-3570
Scott Hollis, Head, Livestock Section .....	(202) 690-2424
Travis Averill – Cattle, Cattle on Feed .....	(202) 720-3040
Sherry Bertramsen – Livestock Slaughter .....	(515) 284-4340
Doug Bounds – Hogs and Pigs .....	(202) 720-3106
Donnie Fike – Dairy Products .....	(202) 690-3236
Mike Miller – Milk Production and Milk Cows .....	(202) 720-3278
Alissa Cowell-Mytar – Sheep and Goats .....	(202) 720-4751



## Access to NASS Reports

For your convenience, you may access NASS reports and products the following ways:

- All reports are available electronically, at no cost, on the NASS web site: <http://www.nass.usda.gov>
- Both national and state specific reports are available via a free e-mail subscription. To set-up this free subscription, visit <http://www.nass.usda.gov> and in the “Follow NASS” box under “Receive reports by Email,” click on “National” or “State” to select the reports you would like to receive.

For more information on NASS surveys and reports, call the NASS Agricultural Statistics Hotline at (800) 727-9540, 7:30 a.m. to 4:00 p.m. ET, or e-mail: [nass@nass.usda.gov](mailto:nass@nass.usda.gov).

The United States Department of Agriculture (USDA) prohibits discrimination in all its programs and activities on the basis of race, color, national origin, age, disability, and where applicable, sex, marital status, familial status, parental status, religion, sexual orientation, political beliefs, genetic information, reprisal, or because all or a part of an individual's income is derived from any public assistance program. (Not all prohibited bases apply to all programs.) Persons with disabilities who require alternative means for communication of program information (Braille, large print, audiotape, etc.) should contact USDA's TARGET Center at (202) 720-2600 (voice and TDD).

To file a complaint of discrimination, write to USDA, Assistant Secretary for Civil Rights, Office of the Assistant Secretary for Civil Rights, 1400 Independence Avenue, S.W., Stop 9410, Washington, DC 20250-9410, or call toll-free at (866) 632-9992 (English) or (800) 877-8339 (TDD) or (866) 377-8642 (English Federal-relay) or (800) 845-6136 (Spanish Federal-relay). USDA is an equal opportunity provider and employer.