



# Cattle on Feed

ISSN: 1948-9080

---

Released November 16, 2012, by the National Agricultural Statistics Service (NASS), Agricultural Statistics Board, United States Department of Agriculture (USDA).

## United States Cattle on Feed Down 5 Percent

**Cattle and calves on feed** for slaughter market in the United States for feedlots with capacity of 1,000 or more head totaled 11.3 million head on November 1, 2012. The inventory was 5 percent below November 1, 2011.

**Placements** in feedlots during October totaled 2.18 million, 13 percent below 2011. This is the lowest cattle placements for the month of October since the series began in 1996. Net placements were 2.10 million head. During October, placements of cattle and calves weighing less than 600 pounds were 680,000, 600-699 pounds were 505,000, 700-799 pounds were 435,000, and 800 pounds and greater were 560,000.

**Marketings** of fed cattle during October totaled 1.84 million, 3 percent above 2011.

**Other disappearance** totaled 78,000 during October, 20 percent below 2011.

**Number of Cattle on Feed, Placements, Marketings, and Other Disappearance on 1,000+ Capacity Feedlots – United States: November 1, 2011 and 2012**

Item	Number		Percent of previous year
	2011	2012	
	(1,000 head)	(1,000 head)	(percent)
On feed October 1 .....	11,282	10,989	97
Placed on feed during October .....	2,492	2,180	87
Fed cattle marketed during October .....	1,787	1,837	103
Other disappearance during October .....	98	78	80
On feed November 1 .....	11,889	11,254	95

**Number of Cattle on Feed, Placements, Marketings, and Other Disappearance on 1,000+ Capacity Feedlots – United States: October 1, 2011 and 2012**

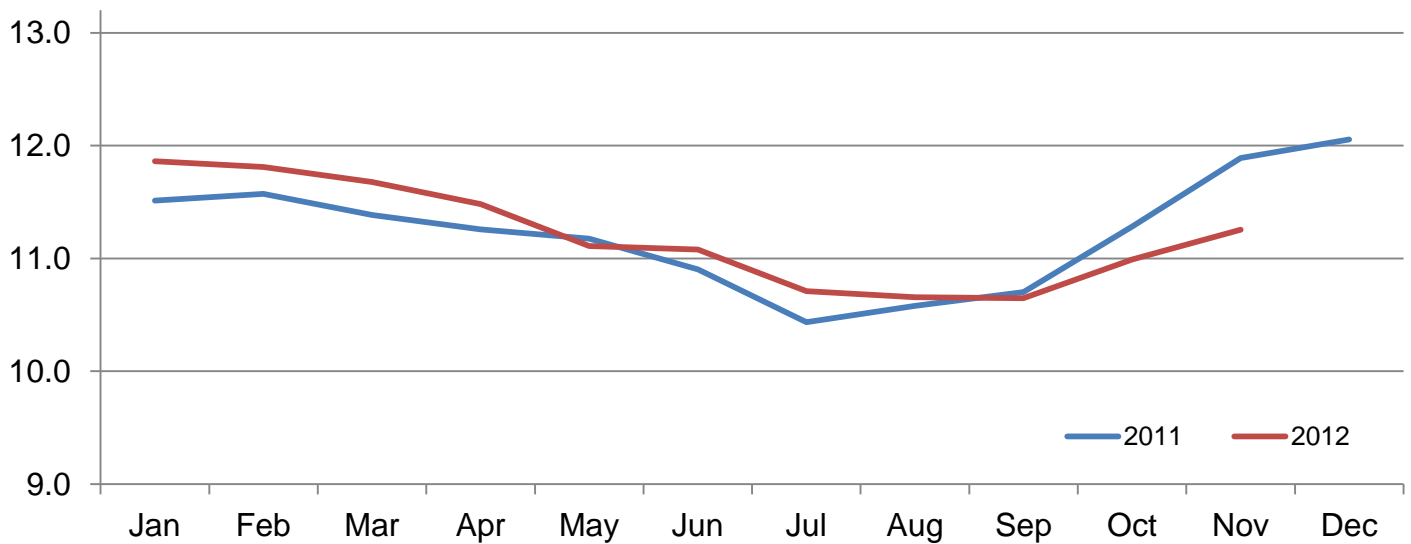
Item	Number		Percent of previous year
	2011	2012	
	(1,000 head)	(1,000 head)	(percent)
On feed September 1 .....	10,700	10,647	100
Placed on feed during September .....	2,469	2,004	81
Fed cattle marketed during September .....	1,813	1,598	88
Other disappearance during September .....	74	64	86
On feed October 1 .....	11,282	10,989	97

**Number of Cattle on Feed on 1,000+ Capacity Feedlots by Month – States and United States: 2011 and 2012**

State	November 1, 2011	October 1, 2012	November 1, 2012		
			Number	Percent of previous year	Percent of previous month
	(1,000 head)	(1,000 head)	(1,000 head)	(percent)	(percent)
Arizona .....	292	272	265	91	97
California .....	490	475	480	98	101
Colorado .....	1,140	1,000	1,030	90	103
Idaho .....	225	230	240	107	104
Iowa .....	570	590	590	104	100
Kansas .....	2,400	2,230	2,220	93	100
Nebraska .....	2,470	2,330	2,480	100	106
Oklahoma .....	390	335	345	88	103
South Dakota .....	240	195	220	92	113
Texas .....	3,000	2,680	2,670	89	100
Washington .....	226	213	248	110	116
Other States .....	446	439	466	104	106
United States .....	11,889	10,989	11,254	95	102

**Cattle on Feed Inventory on 1,000+ Capacity Feedlots – United States**

Million head

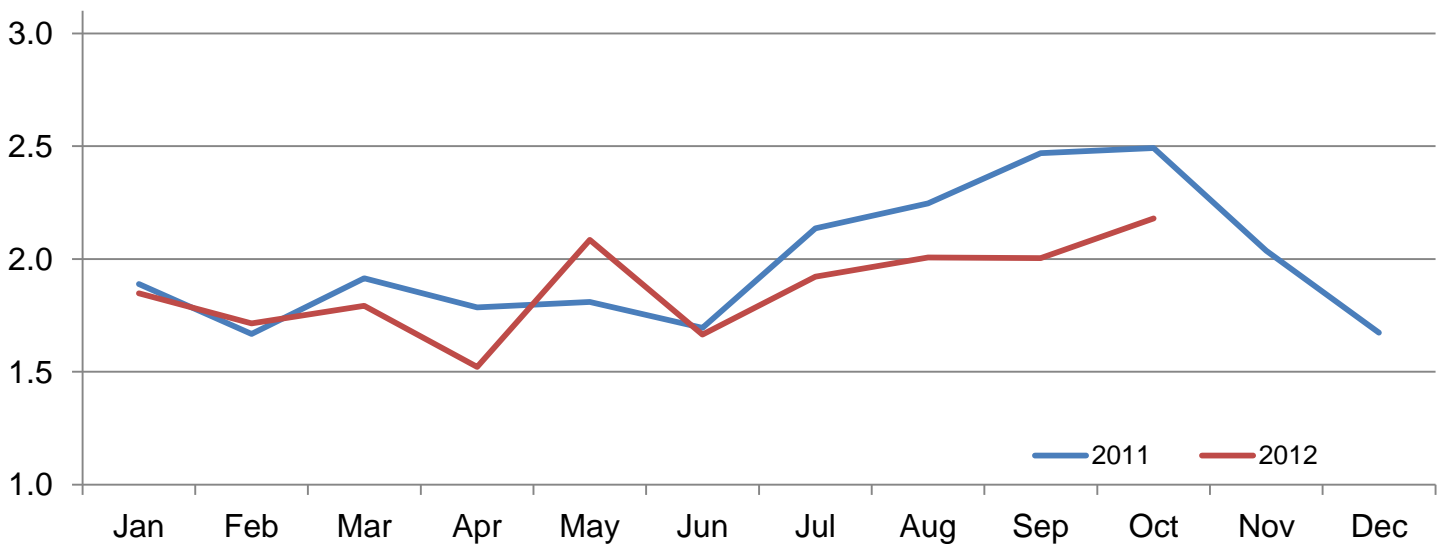


**Number of Cattle Placed on Feed on 1,000+ Capacity Feedlots by Month – States and United States: 2011 and 2012**

State	During October 2011 (1,000 head)	During September 2012 (1,000 head)	During October 2012		
			Number (1,000 head)	Percent of previous year (percent)	Percent of previous month (percent)
Arizona .....	32	20	19	59	95
California .....	54	50	62	115	124
Colorado .....	230	225	195	85	87
Idaho .....	55	61	55	100	90
Iowa .....	137	89	146	107	164
Kansas .....	440	375	380	86	101
Nebraska .....	665	470	590	89	126
Oklahoma .....	86	57	65	76	114
South Dakota .....	75	50	71	95	142
Texas .....	560	480	450	80	94
Washington .....	59	46	74	125	161
Other States .....	99	81	73	74	90
United States .....	2,492	2,004	2,180	87	109

**Number of Cattle Placed on 1,000+ Capacity Feedlots – United States**

Million head



**Number of Cattle Placed on Feed by Weight Group on 1,000+ Capacity Feedlots by Month – States and United States: 2011 and 2012**

State	During October									
	Under 600 lbs		600-699 lbs		700-799 lbs		800+ lbs		Total	
	2011	2012	2011	2012	2011	2012	2011	2012	2011	2012
	(1,000 head)	(1,000 head)	(1,000 head)	(1,000 head)	(1,000 head)	(1,000 head)	(1,000 head)	(1,000 head)	(1,000 head)	(1,000 head)
Colorado .....	60	65	50	45	50	35	70	50	230	195
Kansas .....	115	80	120	95	115	120	90	85	440	380
Nebraska .....	185	190	180	130	110	80	190	190	665	590
Texas .....	250	165	125	125	115	100	70	60	560	450
Other States .....	230	180	115	110	97	100	155	175	597	565
United States .....	840	680	590	505	487	435	575	560	2,492	2,180

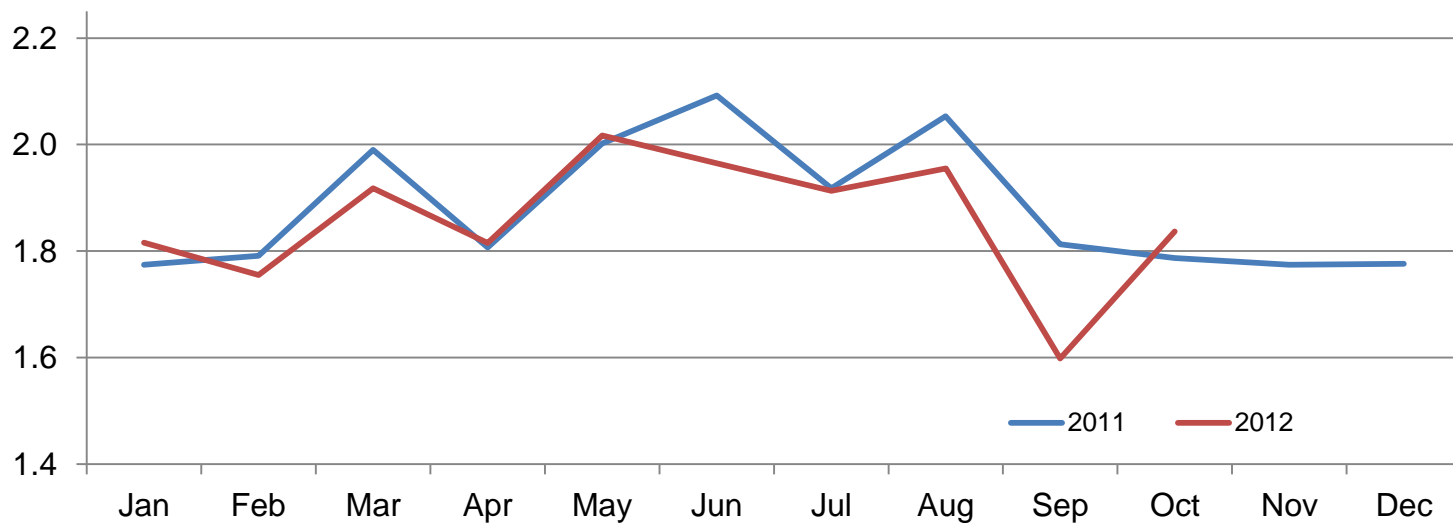
State	During September									
	Under 600 lbs		600-699 lbs		700-799 lbs		800+ lbs		Total	
	2011	2012	2011	2012	2011	2012	2011	2012	2011	2012
	(1,000 head)	(1,000 head)	(1,000 head)	(1,000 head)	(1,000 head)	(1,000 head)	(1,000 head)	(1,000 head)	(1,000 head)	(1,000 head)
Colorado .....	40	40	25	20	60	55	150	110	275	225
Kansas .....	120	80	110	85	140	105	130	105	500	375
Nebraska .....	100	90	80	60	110	100	270	220	560	470
Texas .....	280	185	125	130	85	100	70	65	560	480
Other States .....	145	120	75	60	109	84	245	190	574	454
United States .....	685	515	415	355	504	444	865	690	2,469	2,004

**Number of Cattle Marketed on 1,000+ Capacity Feedlots by Month – States and United States: 2011 and 2012**

State	During October 2011	During September 2012	During October 2012		
			Number	Percent of previous year	Percent of previous month
			(1,000 head)	(percent)	(percent)
Arizona .....	19	18	25	132	139
California .....	49	52	54	110	104
Colorado .....	155	150	160	103	107
Idaho .....	48	35	44	92	126
Iowa .....	115	87	143	124	164
Kansas .....	340	310	365	107	118
Nebraska .....	390	370	425	109	115
Oklahoma .....	63	45	54	86	120
South Dakota .....	39	39	45	115	115
Texas .....	465	400	440	95	110
Washington .....	40	40	38	95	95
Other States .....	64	52	44	69	85
United States .....	1,787	1,598	1,837	103	115

## Number of Cattle Marketed on 1,000+ Capacity Feedlots – United States

Million head



### Other Disappearance on 1,000+ Capacity Feedlots by Month – States and United States: 2011 and 2012

State	During October 2011 (1,000 head)	During September 2012 (1,000 head)	During October 2012		
			Number (1,000 head)	Percent of previous year (percent)	Percent of previous month (percent)
Arizona .....	1	1	1	100	100
California .....	5	3	3	60	100
Colorado .....	5	5	5	100	100
Idaho .....	2	1	1	50	100
Iowa .....	2	2	3	150	150
Kansas .....	20	15	25	125	167
Nebraska .....	15	10	15	100	150
Oklahoma .....	3	2	1	33	50
South Dakota .....	1	1	1	100	100
Texas .....	35	20	20	57	100
Washington .....	1	1	1	100	100
Other States .....	8	3	2	25	67
United States .....	98	64	78	80	122

## Terms and Definitions of Cattle on Feed Estimates

**Cattle on feed** are animals being fed a ration of grain, silage, hay and/or protein supplement for slaughter market that are expected to produce a carcass that will grade select or better. It excludes cattle being "backgrounded only" for later sale as feeders or later placement in another feedlot.

**Placements** are cattle put into a feedlot, fed a ration which will produce a carcass that will grade select or better, and are intended for the slaughter market.

**Marketings** are cattle shipped out of feedlots to a slaughter market.

**Other disappearance** includes death loss, movement from feedlots to pasture, and shipments to other feedlots for further feeding.

## Reliability of Cattle on Feed Estimates

**Survey Procedures:** During January and July all known feedlots in the United States with capacity of 1,000 or more head are surveyed to provide data for cattle on feed estimates. During the other months, all known feedlots from 16 States are surveyed. The 16 States account for approximately 98 percent of the cattle on feed in feedlots with capacity of 1,000 or more head. Individual State estimates are published monthly for 11 of the 16 States. Data collected from the remaining 5 States are used to establish the "Other States" estimates. These 5 States include Illinois, Minnesota, New Mexico, Oregon, and Wyoming. The "Other States" category represents all cattle on feed with a capacity of 1,000 or more head for the rest of the United States.

**Estimating Procedures:** These cattle on feed estimates were prepared by the Agricultural Statistics Board after reviewing recommendations and analysis submitted by each State office. Regional and State survey data were reviewed for reasonableness with each other and with estimates from the previous month when establishing the current estimates.

**Revision Policy:** Revisions to previous estimates are made to improve month to month relationships. Estimates for the previous month are subject to revision in all States each month when current estimates are made. In February, all monthly estimates for the previous year, and the number of feedlots and annual marketings from two years ago are reviewed and subject to revisions. The reviews are primarily based on slaughter data, state check-off or brand data, and any other data that may have been received after the original estimate was made. Estimates will also be reviewed after data from the Census of Agriculture are available. No revisions will be made after that date and estimates become final.

**Reliability:** Since all 1,000+ capacity cattle on feed operators in every State are not included in the monthly survey, survey estimates are subject to sampling variability. Survey results are also subject to non-sampling errors such as omissions, duplications, and mistakes in reporting, recording, and processing the data. The effects of these errors cannot be measured directly. They are minimized through rigid quality controls in the data collection process and through a careful review of all reported data for consistency and reasonableness.

To assist users in evaluating the reliability of estimates in this report, the "**Root Mean Square Error**" is shown for selected items in the table on the following page. The "Root Mean Square Error" is a statistical measure based on past performance and is computed using the differences between first and latest estimates. The "Root Mean Square Error" for cattle on feed inventory estimates over the past 24 months is 0.2 percent. This means that chances are 2 out of 3 that the final estimate will not be above or below the current estimate of 11.3 million head by more than 0.1 percent. Chances are 9 out of 10 that the difference will not exceed 0.3 percent.

The table on the following page shows a 24 month record of the range of differences between first and latest estimates for selected items. Using estimates of number on feed as an example, changes between the first estimate and the latest estimate during the past 24 months have averaged 13,000 head, ranging from 0 to 47,000 head. During this period the initial estimate has been above the latest estimate 13 times and has been below the latest estimate 3 times. This does not imply that the initial estimate is likely to understate or overstate final inventory.

## Reliability of Monthly Cattle on Feed Estimates

[[Based on data for the past 24 months]]

Item	Root mean square error	90 percent confidence level	Difference between first and latest estimate				
			Average	Smallest	Largest	Months	
						Below latest	Above latest
	(percent)	(percent)	(1,000)	(1,000)	(1,000)	(number)	(number)
Number on feed .....	0.2	0.3	13	0	47	3	13
Placements .....	0.3	0.5	3	0	18	5	9
Marketings .....	0.3	0.5	3	0	20	7	5

## Information Contacts

Listed below are the commodity specialists in the Livestock Branch of the National Agricultural Statistics Service to contact for additional information. E-mail inquiries may be sent to [nass@nass.usda.gov](mailto:nass@nass.usda.gov)

Dan Kerestes, Chief, Livestock Branch .....	(202) 720-3570
Scott Hollis, Head, Livestock Section .....	(202) 690-2424
Travis Averill – Cattle, Cattle on Feed .....	(202) 720-3040
Sherry Bertramsen – Livestock Slaughter .....	(515) 284-4340
Doug Bounds – Hogs and Pigs .....	(202) 720-3106
Donnie Fike – Dairy Products .....	(202) 690-3236
Mike Miller – Milk Production and Milk Cows .....	(202) 720-3278
Alissa Cowell-Mytar – Sheep and Goats .....	(202) 720-4751



## Access to NASS Reports

For your convenience, you may access NASS reports and products the following ways:

- All reports are available electronically, at no cost, on the NASS web site: <http://www.nass.usda.gov>
- Both national and state specific reports are available via a free e-mail subscription. To set-up this free subscription, visit <http://www.nass.usda.gov> and in the “Follow NASS” box under “Receive reports by Email,” click on “National” or “State” to select the reports you would like to receive.

For more information on NASS surveys and reports, call the NASS Agricultural Statistics Hotline at (800) 727-9540, 7:30 a.m. to 4:00 p.m. ET, or e-mail: [nass@nass.usda.gov](mailto:nass@nass.usda.gov).

The United States Department of Agriculture (USDA) prohibits discrimination in all its programs and activities on the basis of race, color, national origin, age, disability, and where applicable, sex, marital status, familial status, parental status, religion, sexual orientation, political beliefs, genetic information, reprisal, or because all or a part of an individual's income is derived from any public assistance program. (Not all prohibited bases apply to all programs.) Persons with disabilities who require alternative means for communication of program information (Braille, large print, audiotape, etc.) should contact USDA's TARGET Center at (202) 720-2600 (voice and TDD).

To file a complaint of discrimination, write to USDA, Assistant Secretary for Civil Rights, Office of the Assistant Secretary for Civil Rights, 1400 Independence Avenue, S.W., Stop 9410, Washington, DC 20250-9410, or call toll-free at (866) 632-9992 (English) or (800) 877-8339 (TDD) or (866) 377-8642 (English Federal-relay) or (800) 845-6136 (Spanish Federal-relay). USDA is an equal opportunity provider and employer.