



# Cattle on Feed

ISSN: 1948-9080

---

Released December 21, 2012, by the National Agricultural Statistics Service (NASS), Agricultural Statistics Board, United States Department of Agriculture (USDA).

## United States Cattle on Feed Down 6 Percent

**Cattle and calves on feed** for slaughter market in the United States for feedlots with capacity of 1,000 or more head totaled 11.3 million head on December 1, 2012. The inventory was 6 percent below December 1, 2011.

**Placements** in feedlots during November totaled 1.92 million, 6 percent below 2011. Net placements were 1.84 million head. During November, placements of cattle and calves weighing less than 600 pounds were 645,000, 600-699 pounds were 450,000, 700-799 pounds were 375,000, and 800 pounds and greater were 453,000.

**Marketings** of fed cattle during November totaled 1.76 million, 1 percent below 2011.

**Other disappearance** totaled 88,000 during November, 9 percent below 2011.

**Number of Cattle on Feed, Placements, Marketings, and Other Disappearance on 1,000+ Capacity Feedlots – United States: December 1, 2011 and 2012**

Item	Number		Percent of previous year
	2011	2012	
	(1,000 head)	(1,000 head)	(percent)
On feed November 1 .....	11,889	11,254	95
Placed on feed during November .....	2,037	1,923	94
Fed cattle marketed during November .....	1,774	1,761	99
Other disappearance during November .....	97	88	91
On feed December 1 .....	12,055	11,328	94

**Number of Cattle on Feed, Placements, Marketings, and Other Disappearance on 1,000+ Capacity Feedlots – United States: November 1, 2011 and 2012**

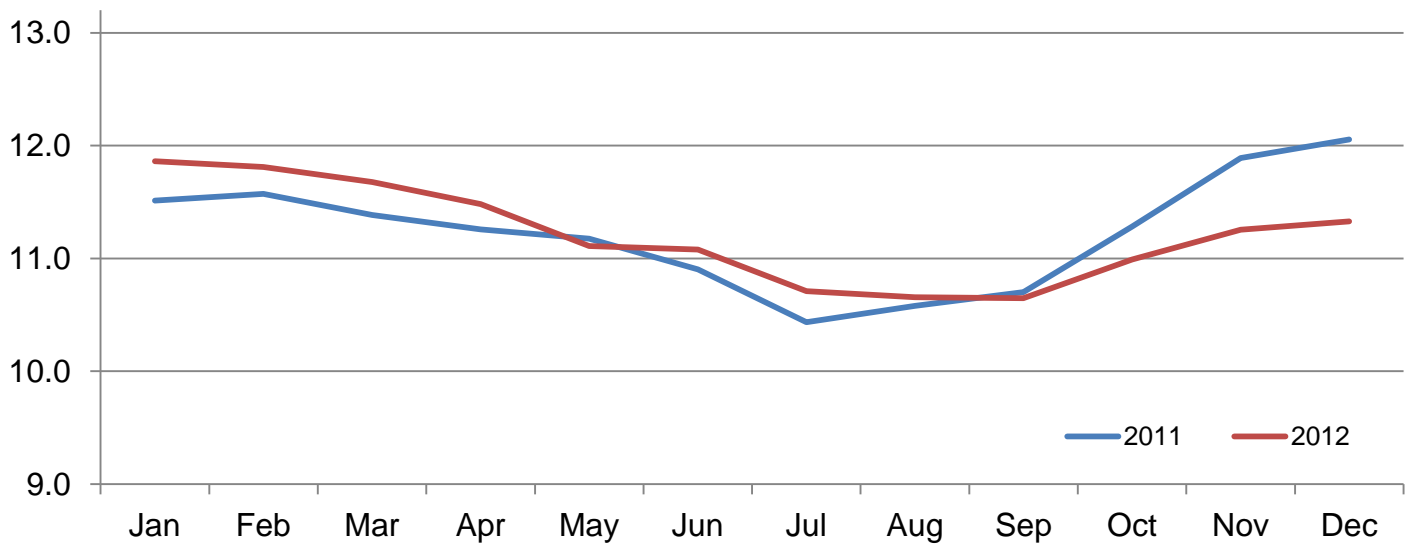
Item	Number		Percent of previous year
	2011	2012	
	(1,000 head)	(1,000 head)	(percent)
On feed October 1 .....	11,282	10,989	97
Placed on feed during October .....	2,492	2,180	87
Fed cattle marketed during October .....	1,787	1,837	103
Other disappearance during October .....	98	78	80
On feed November 1 .....	11,889	11,254	95

**Number of Cattle on Feed on 1,000+ Capacity Feedlots by Month – States and United States: 2011 and 2012**

State	December 1, 2011	November 1, 2012	December 1, 2012		
			Number	Percent of previous year	Percent of previous month
	(1,000 head)	(1,000 head)	(1,000 head)	(percent)	(percent)
Arizona .....	290	265	267	92	101
California .....	505	480	490	97	102
Colorado .....	1,160	1,030	1,020	88	99
Idaho .....	235	240	245	104	102
Iowa .....	610	590	610	100	103
Kansas .....	2,360	2,220	2,170	92	98
Nebraska .....	2,560	2,480	2,530	99	102
Oklahoma .....	385	345	345	90	100
South Dakota .....	265	220	230	87	105
Texas .....	2,990	2,670	2,700	90	101
Washington .....	236	248	261	111	105
Other States .....	459	466	460	100	99
United States .....	12,055	11,254	11,328	94	101

**Cattle on Feed Inventory on 1,000+ Capacity Feedlots – United States**

Million head

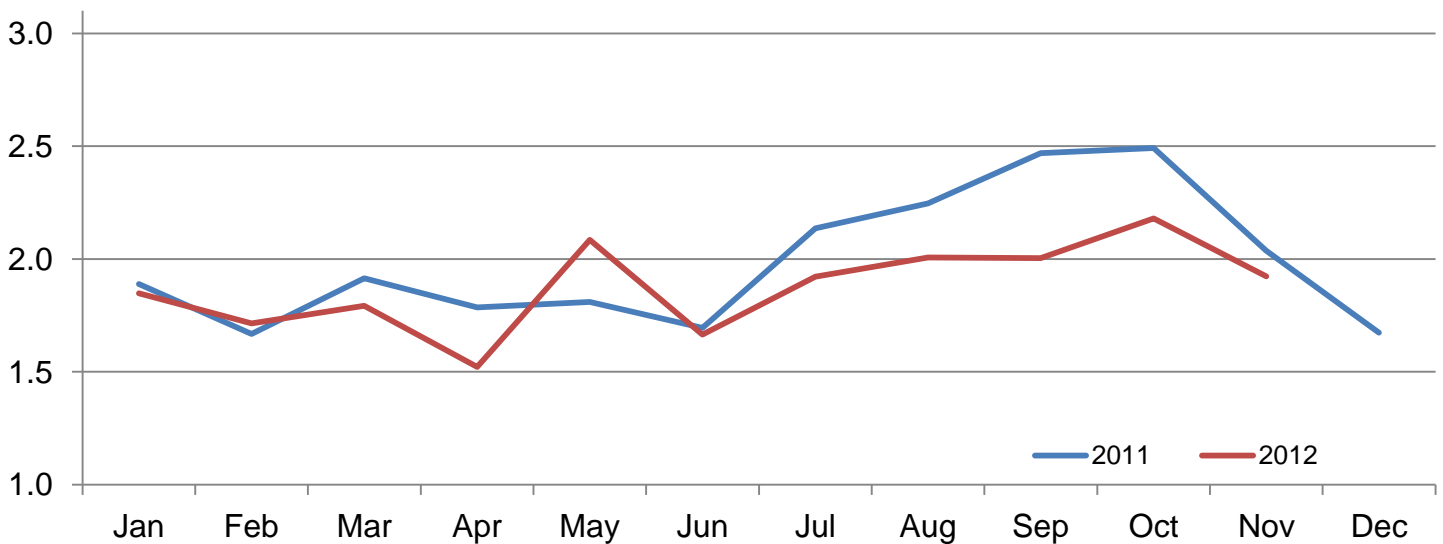


**Number of Cattle Placed on Feed on 1,000+ Capacity Feedlots by Month – States and United States: 2011 and 2012**

State	During November 2011 (1,000 head)	During October 2012 (1,000 head)	During November 2012		
			Number (1,000 head)	Percent of previous year (percent)	Percent of previous month (percent)
Arizona .....	27	19	28	104	147
California .....	66	62	65	98	105
Colorado .....	175	195	150	86	77
Idaho .....	46	55	40	87	73
Iowa .....	143	146	123	86	84
Kansas .....	375	380	355	95	93
Nebraska .....	480	590	465	97	79
Oklahoma .....	60	65	56	93	86
South Dakota .....	70	71	57	81	80
Texas .....	470	450	465	99	103
Washington .....	54	74	57	106	77
Other States .....	71	73	62	87	85
United States .....	2,037	2,180	1,923	94	88

**Number of Cattle Placed on 1,000+ Capacity Feedlots – United States**

Million head



**Number of Cattle Placed on Feed by Weight Group on 1,000+ Capacity Feedlots by Month – States and United States: 2011 and 2012**

State	During November									
	Under 600 lbs		600-699 lbs		700-799 lbs		800+ lbs		Total	
	2011	2012	2011	2012	2011	2012	2011	2012	2011	2012
	(1,000 head)	(1,000 head)	(1,000 head)	(1,000 head)	(1,000 head)	(1,000 head)	(1,000 head)	(1,000 head)	(1,000 head)	(1,000 head)
Colorado .....	55	40	40	40	30	30	50	40	175	150
Kansas .....	85	70	100	90	120	105	70	90	375	355
Nebraska .....	130	120	135	120	85	80	130	145	480	465
Texas .....	270	230	100	105	60	80	40	50	470	465
Other States .....	210	185	125	95	82	80	120	128	537	488
United States .....	750	645	500	450	377	375	410	453	2,037	1,923

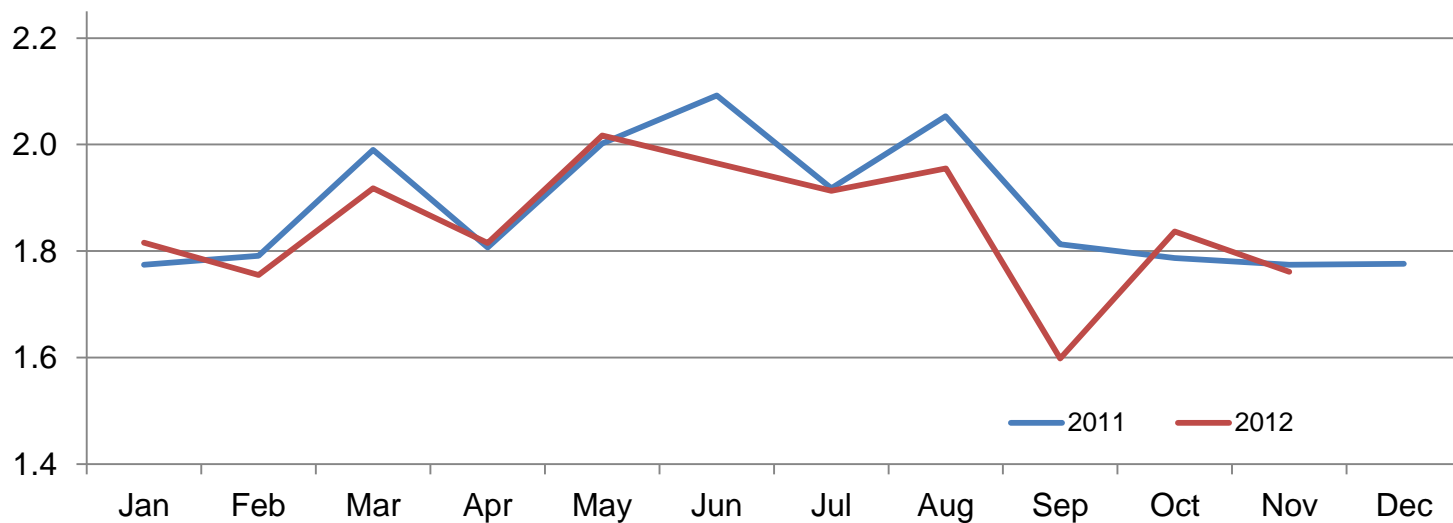
State	During October									
	Under 600 lbs		600-699 lbs		700-799 lbs		800+ lbs		Total	
	2011	2012	2011	2012	2011	2012	2011	2012	2011	2012
	(1,000 head)	(1,000 head)	(1,000 head)	(1,000 head)	(1,000 head)	(1,000 head)	(1,000 head)	(1,000 head)	(1,000 head)	(1,000 head)
Colorado .....	60	65	50	45	50	35	70	50	230	195
Kansas .....	115	80	120	95	115	120	90	85	440	380
Nebraska .....	185	190	180	130	110	80	190	190	665	590
Texas .....	250	165	125	125	115	100	70	60	560	450
Other States .....	230	180	115	110	97	100	155	175	597	565
United States .....	840	680	590	505	487	435	575	560	2,492	2,180

**Number of Cattle Marketed on 1,000+ Capacity Feedlots by Month – States and United States: 2011 and 2012**

State	During November 2011	During October 2012	During November 2012		
			Number	Percent of previous year	Percent of previous month
			(1,000 head)	(percent)	(percent)
Arizona .....	28	25	25	89	100
California .....	46	54	51	111	94
Colorado .....	145	160	155	107	97
Idaho .....	35	44	34	97	77
Iowa .....	100	143	100	100	70
Kansas .....	395	365	390	99	107
Nebraska .....	375	425	400	107	94
Oklahoma .....	61	54	54	89	100
South Dakota .....	41	45	45	110	100
Texas .....	450	440	415	92	94
Washington .....	43	38	43	100	113
Other States .....	55	44	49	89	111
United States .....	1,774	1,837	1,761	99	96

## Number of Cattle Marketed on 1,000+ Capacity Feedlots – United States

Million head



### Other Disappearance on 1,000+ Capacity Feedlots by Month – States and United States: 2011 and 2012

State	During November 2011 (1,000 head)	During October 2012 (1,000 head)	During November 2012		
			Number (1,000 head)	Percent of previous year (percent)	Percent of previous month (percent)
Arizona .....	1	1	1	100	100
California .....	5	3	4	80	133
Colorado .....	10	5	5	50	100
Idaho .....	1	1	1	100	100
Iowa .....	3	3	3	100	100
Kansas .....	20	25	15	75	60
Nebraska .....	15	15	15	100	100
Oklahoma .....	4	1	2	50	200
South Dakota .....	4	1	2	50	200
Texas .....	30	20	20	67	100
Washington .....	1	1	1	100	100
Other States .....	3	2	19	633	950
United States .....	97	78	88	91	113

## Terms and Definitions of Cattle on Feed Estimates

**Cattle on feed** are animals being fed a ration of grain, silage, hay and/or protein supplement for slaughter market that are expected to produce a carcass that will grade select or better. It excludes cattle being "backgrounded only" for later sale as feeders or later placement in another feedlot.

**Placements** are cattle put into a feedlot, fed a ration which will produce a carcass that will grade select or better, and are intended for the slaughter market.

**Marketings** are cattle shipped out of feedlots to a slaughter market.

**Other disappearance** includes death loss, movement from feedlots to pasture, and shipments to other feedlots for further feeding.

## Reliability of Cattle on Feed Estimates

**Survey Procedures:** During January and July all known feedlots in the United States with capacity of 1,000 or more head are surveyed to provide data for cattle on feed estimates. During the other months, all known feedlots from 16 States are surveyed. The 16 States account for approximately 98 percent of the cattle on feed in feedlots with capacity of 1,000 or more head. Individual State estimates are published monthly for 11 of the 16 States. Data collected from the remaining 5 States are used to establish the "Other States" estimates. These 5 States include Illinois, Minnesota, New Mexico, Oregon, and Wyoming. The "Other States" category represents all cattle on feed with a capacity of 1,000 or more head for the rest of the United States.

**Estimating Procedures:** These cattle on feed estimates were prepared by the Agricultural Statistics Board after reviewing recommendations and analysis submitted by each State office. Regional and State survey data were reviewed for reasonableness with each other and with estimates from the previous month when establishing the current estimates.

**Revision Policy:** Revisions to previous estimates are made to improve month to month relationships. Estimates for the previous month are subject to revision in all States each month when current estimates are made. In February, all monthly estimates for the previous year, and the number of feedlots and annual marketings from two years ago are reviewed and subject to revisions. The reviews are primarily based on slaughter data, state check-off or brand data, and any other data that may have been received after the original estimate was made. Estimates will also be reviewed after data from the Census of Agriculture are available. No revisions will be made after that date and estimates become final.

**Reliability:** Since all 1,000+ capacity cattle on feed operators in every State are not included in the monthly survey, survey estimates are subject to sampling variability. Survey results are also subject to non-sampling errors such as omissions, duplications, and mistakes in reporting, recording, and processing the data. The effects of these errors cannot be measured directly. They are minimized through rigid quality controls in the data collection process and through a careful review of all reported data for consistency and reasonableness.

To assist users in evaluating the reliability of estimates in this report, the "**Root Mean Square Error**" is shown for selected items in the table on the following page. The "Root Mean Square Error" is a statistical measure based on past performance and is computed using the differences between first and latest estimates. The "Root Mean Square Error" for cattle on feed inventory estimates over the past 24 months is 0.2 percent. This means that chances are 2 out of 3 that the final estimate will not be above or below the current estimate of 11.3 million head by more than 0.1 percent. Chances are 9 out of 10 that the difference will not exceed 0.3 percent.

The table on the following page shows a 24 month record of the range of differences between first and latest estimates for selected items. Using estimates of number on feed as an example, changes between the first estimate and the latest estimate during the past 24 months have averaged 12,000 head, ranging from 0 to 47,000 head. During this period the initial estimate has been above the latest estimate 13 times and has been below the latest estimate 2 times. This does not imply that the initial estimate is likely to understate or overstate final inventory.

## Reliability of Monthly Cattle on Feed Estimates

[[Based on data for the past 24 months]]

Item	Root mean square error	90 percent confidence level	Difference between first and latest estimate				
			Average	Smallest	Largest	Months	
						Below latest	Above latest
	(percent)	(percent)	(1,000)	(1,000)	(1,000)	(number)	(number)
Number on feed .....	0.2	0.3	12	0	47	2	13
Placements .....	0.3	0.5	3	0	18	4	9
Marketings .....	0.3	0.5	3	0	20	7	5

## Information Contacts

Listed below are the commodity specialists in the Livestock Branch of the National Agricultural Statistics Service to contact for additional information. E-mail inquiries may be sent to [nass@nass.usda.gov](mailto:nass@nass.usda.gov)

Dan Kerestes, Chief, Livestock Branch .....	(202) 720-3570
Scott Hollis, Head, Livestock Section .....	(202) 690-2424
Travis Averill – Cattle, Cattle on Feed .....	(202) 720-3040
Sherry Bertramsen – Livestock Slaughter .....	(515) 284-4340
Doug Bounds – Hogs and Pigs .....	(202) 720-3106
Donnie Fike – Dairy Products .....	(202) 690-3236
Mike Miller – Milk Production and Milk Cows .....	(202) 720-3278
Alissa Cowell-Mytar – Sheep and Goats .....	(202) 720-4751



## Access to NASS Reports

For your convenience, you may access NASS reports and products the following ways:

- All reports are available electronically, at no cost, on the NASS web site: <http://www.nass.usda.gov>
- Both national and state specific reports are available via a free e-mail subscription. To set-up this free subscription, visit <http://www.nass.usda.gov> and in the “Follow NASS” box under “Receive reports by Email,” click on “National” or “State” to select the reports you would like to receive.

For more information on NASS surveys and reports, call the NASS Agricultural Statistics Hotline at (800) 727-9540, 7:30 a.m. to 4:00 p.m. ET, or e-mail: [nass@nass.usda.gov](mailto:nass@nass.usda.gov).

The United States Department of Agriculture (USDA) prohibits discrimination in all its programs and activities on the basis of race, color, national origin, age, disability, and where applicable, sex, marital status, familial status, parental status, religion, sexual orientation, political beliefs, genetic information, reprisal, or because all or a part of an individual's income is derived from any public assistance program. (Not all prohibited bases apply to all programs.) Persons with disabilities who require alternative means for communication of program information (Braille, large print, audiotape, etc.) should contact USDA's TARGET Center at (202) 720-2600 (voice and TDD).

To file a complaint of discrimination, write to USDA, Assistant Secretary for Civil Rights, Office of the Assistant Secretary for Civil Rights, 1400 Independence Avenue, S.W., Stop 9410, Washington, DC 20250-9410, or call toll-free at (866) 632-9992 (English) or (800) 877-8339 (TDD) or (866) 377-8642 (English Federal-relay) or (800) 845-6136 (Spanish Federal-relay). USDA is an equal opportunity provider and employer.