



Cattle on Feed

ISSN: 1948-9080

Released January 25, 2013, by the National Agricultural Statistics Service (NASS), Agricultural Statistics Board, United States Department of Agriculture (USDA).

United States Cattle on Feed Down 6 Percent

Cattle and calves on feed for slaughter market in the United States for feedlots with capacity of 1,000 or more head totaled 11.2 million head on January 1, 2013. The inventory was 6 percent below January 1, 2012. The inventory included 7.05 million steers and steer calves, down 3 percent from the previous year. This group accounted for 63 percent of the total inventory. Heifers and heifer calves accounted for 4.07 million head, down 9 percent from 2012.

Placements in feedlots during December totaled 1.66 million, 1 percent below 2011. Net placements were 1.59 million head. During December, placements of cattle and calves weighing less than 600 pounds were 495,000, 600-699 pounds were 415,000, 700-799 pounds were 379,000, and 800 pounds and greater were 375,000.

Marketings of fed cattle during December totaled 1.75 million, 2 percent below 2011.

Other disappearance totaled 74,000 during December, 19 percent below 2011.

Number of Cattle on Feed, Placements, Marketings, and Other Disappearance on 1,000+ Capacity Feedlots – United States: January 1, 2012 and 2013

Item	Number		Percent of previous year
	2012	2013	
	(1,000 head)	(1,000 head)	(percent)
On feed December 1	12,055	11,348	94
Placed on feed during December	1,673	1,664	99
Fed cattle marketed during December	1,776	1,745	98
Other disappearance during December	91	74	81
On feed January 1	11,861	11,193	94

Number of Cattle on Feed, Placements, Marketings, and Other Disappearance on 1,000+ Capacity Feedlots – United States: December 1, 2011 and 2012

Item	Number		Percent of previous year
	2011	2012	
	(1,000 head)	(1,000 head)	(percent)
On feed November 1	11,889	11,254	95
Placed on feed during November	2,037	1,943	95
Fed cattle marketed during November	1,774	1,761	99
Other disappearance during November	97	88	91
On feed December 1	12,055	11,348	94

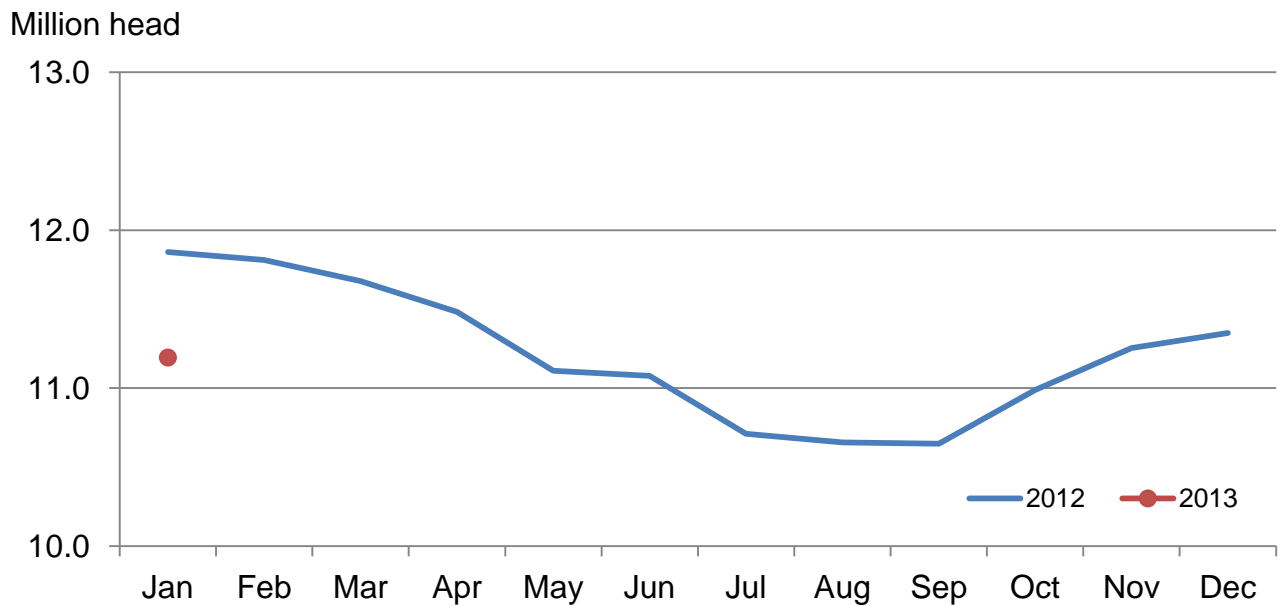
Number on Feed by Class on 1,000+ Capacity Feedlots – United States: January 1, 2012 and 2013

Item	Number		Percent of previous year
	2012	2013	
	(1,000 Head)	(1,000 Head)	(percent)
Class on Feed January 1			
Steers and Steer Calves	7,281	7,047	97
Heifers and Heifer Calves	4,496	4,070	91
Cows and Bulls	84	76	90

Number of Cattle on Feed on 1,000+ Capacity Feedlots by Month – States and United States: 2012 and 2013

State	January 1, 2012	December 1, 2012	January 1, 2013		
			Number	Percent of previous year	Percent of previous month
	(1,000 head)	(1,000 head)	(1,000 head)	(percent)	(percent)
Arizona	279	267	272	97	102
California	510	490	480	94	98
Colorado	1,150	1,020	1,000	87	98
Idaho	230	245	230	100	94
Iowa	620	610	620	100	102
Kansas	2,250	2,190	2,110	94	96
Nebraska	2,550	2,530	2,480	97	98
Oklahoma	375	345	345	92	100
South Dakota	260	230	230	88	100
Texas	2,940	2,700	2,720	93	101
Washington	232	261	247	106	95
Other States	465	460	459	99	100
United States	11,861	11,348	11,193	94	99

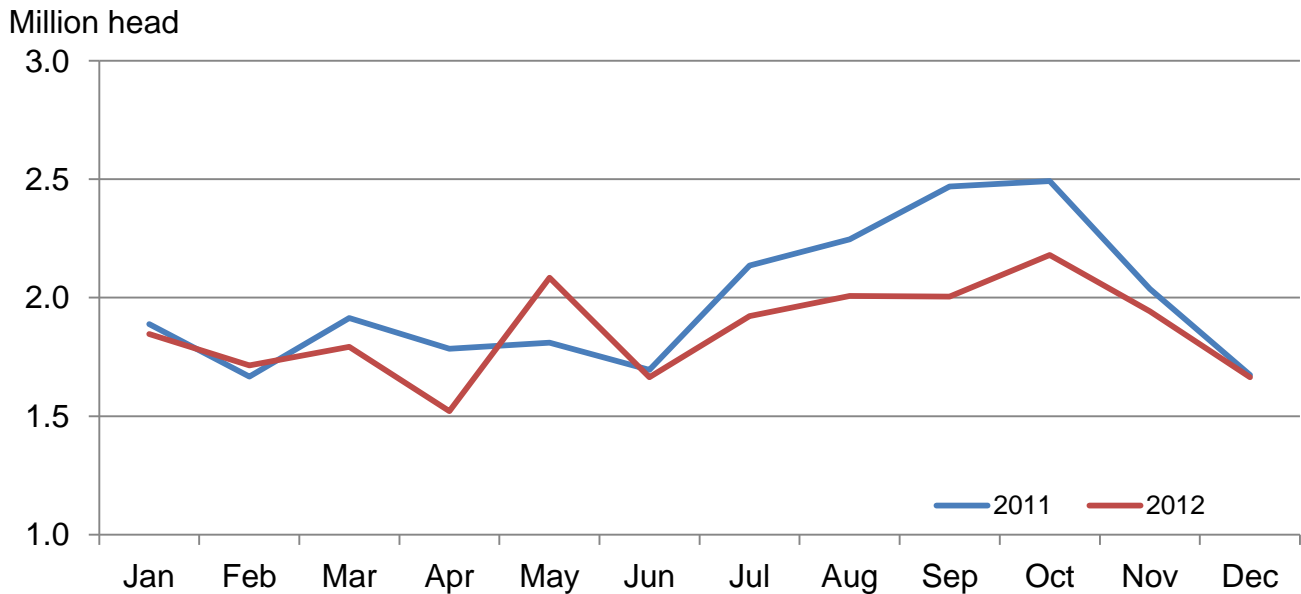
Cattle on Feed Inventory on 1,000+ Capacity Feedlots - United States



Number of Cattle Placed on Feed on 1,000+ Capacity Feedlots by Month – States and United States: 2011 and 2012

State	During December 2011 (1,000 head)	During November 2012 (1,000 head)	During December 2012		
			Number (1,000 head)	Percent of previous year (percent)	Percent of previous month (percent)
Arizona	26	28	29	112	104
California	61	65	50	82	77
Colorado	160	150	140	88	93
Idaho	36	40	26	72	65
Iowa	77	123	82	106	67
Kansas	350	375	365	104	97
Nebraska	380	465	390	103	84
Oklahoma	45	56	52	116	93
South Dakota	37	57	34	92	60
Texas	400	465	415	104	89
Washington	44	57	25	57	44
Other States	57	62	56	98	90
United States	1,673	1,943	1,664	99	86

Number of Cattle Placed on 1,000+ Capacity Feedlots - United States



Number of Cattle Placed on Feed by Weight Group on 1,000+ Capacity Feedlots by Month – States and United States: 2011 and 2012

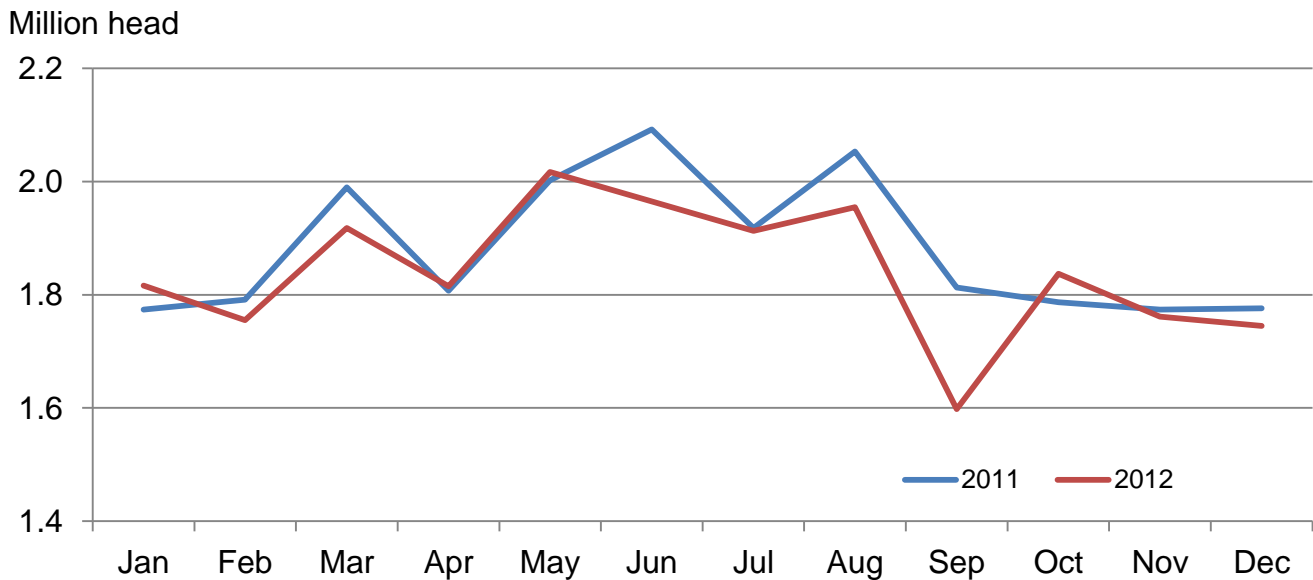
State	During December									
	Under 600 lbs		600-699 lbs		700-799 lbs		800+ lbs		Total	
	2011	2012	2011	2012	2011	2012	2011	2012	2011	2012
	(1,000 head)	(1,000 head)	(1,000 head)	(1,000 head)	(1,000 head)	(1,000 head)	(1,000 head)	(1,000 head)	(1,000 head)	(1,000 head)
Colorado	50	35	35	35	30	35	45	35	160	140
Kansas	75	70	100	100	105	105	70	90	350	365
Nebraska	60	70	90	90	100	110	130	120	380	390
Texas	225	200	75	100	55	65	45	50	400	415
Other States	140	120	85	90	70	64	88	80	383	354
United States	550	495	385	415	360	379	378	375	1,673	1,664

State	During November									
	Under 600 lbs		600-699 lbs		700-799 lbs		800+ lbs		Total	
	2011	2012	2011	2012	2011	2012	2011	2012	2011	2012
	(1,000 head)	(1,000 head)	(1,000 head)	(1,000 head)	(1,000 head)	(1,000 head)	(1,000 head)	(1,000 head)	(1,000 head)	(1,000 head)
Colorado	55	40	40	40	30	30	50	40	175	150
Kansas	85	80	100	90	120	115	70	90	375	375
Nebraska	130	120	135	120	85	80	130	145	480	465
Texas	270	230	100	105	60	80	40	50	470	465
Other States	210	185	125	95	82	80	120	128	537	488
United States	750	655	500	450	377	385	410	453	2,037	1,943

Number of Cattle Marketed on 1,000+ Capacity Feedlots by Month – States and United States: 2011 and 2012

State	During December 2011	During November 2012	During December 2012		
			Number	Percent of previous year	Percent of previous month
			(1,000 head)	(percent)	(percent)
	(1,000 head)	(1,000 head)	(1,000 head)	(percent)	(percent)
Arizona	36	25	23	64	92
California	52	51	55	106	108
Colorado	160	155	155	97	100
Idaho	40	34	40	100	118
Iowa	63	100	68	108	68
Kansas	445	390	425	96	109
Nebraska	380	400	425	112	106
Oklahoma	52	54	49	94	91
South Dakota	37	45	33	89	73
Texas	420	415	380	90	92
Washington	45	43	38	84	88
Other States	46	49	54	117	110
United States	1,776	1,761	1,745	98	99

Number of Cattle Marketed on 1,000+ Capacity Feedlots - United States



Other Disappearance on 1,000+ Capacity Feedlots by Month – States and United States: 2011 and 2012

State	During December 2011 (1,000 head)	During November 2012 (1,000 head)	During December 2012		
			Number (1,000 head)	Percent of previous year (percent)	Percent of previous month (percent)
Arizona	1	1	1	100	100
California	4	4	5	125	125
Colorado	10	5	5	50	100
Idaho	1	1	1	100	100
Iowa	4	3	4	100	133
Kansas	15	15	20	133	133
Nebraska	10	15	15	150	100
Oklahoma	3	2	3	100	150
South Dakota	5	2	1	20	50
Texas	30	20	15	50	75
Washington	3	1	1	33	100
Other States	5	19	3	60	16
United States	91	88	74	81	84

Number on Feed by Class on 1,000+ Capacity Feedlots by Quarter – States and United States: 2012 and 2013

State	Steers and steer calves			Heifers and heifer calves			Cows and bulls		
	Jan 1, 2012	Oct 1, 2012	Jan 1, 2013	Jan 1, 2012	Oct 1, 2012	Jan 1, 2013	Jan 1, 2012	Oct 1, 2012	Jan 1, 2013
	(1,000 Head)	(1,000 Head)	(1,000 Head)	(1,000 Head)	(1,000 Head)	(1,000 Head)	(1,000 Head)	(1,000 Head)	(1,000 Head)
Arizona	276	268	264	3	4	8	0	0	0
California	440	410	405	69	65	75	1	0	0
Colorado	745	670	620	400	325	370	5	5	10
Idaho	123	137	126	106	89	99	1	4	5
Iowa	450	415	420	170	175	200	0	0	0
Kansas	1,160	1,200	1,160	1,085	1,025	945	5	5	5
Nebraska	1,530	1,400	1,530	980	900	930	40	30	20
Oklahoma	215	225	220	160	110	125	0	0	0
South Dakota	131	108	113	101	75	91	28	12	26
Texas	1,730	1,690	1,720	1,209	989	999	1	1	1
Washington	150	137	147	80	74	96	2	2	4
Other States	331	300	322	133	136	132	1	3	5
United States	7,281	6,960	7,047	4,496	3,967	4,070	84	62	76

Terms and Definitions of Cattle on Feed Estimates

Cattle on feed are animals being fed a ration of grain, silage, hay and/or protein supplement for slaughter market that are expected to produce a carcass that will grade select or better. It excludes cattle being "backgrounded only" for later sale as feeders or later placement in another feedlot.

Placements are cattle put into a feedlot, fed a ration which will produce a carcass that will grade select or better, and are intended for the slaughter market.

Marketings are cattle shipped out of feedlots to a slaughter market.

Other disappearance includes death loss, movement from feedlots to pasture, and shipments to other feedlots for further feeding.

Reliability of Cattle on Feed Estimates

Survey Procedures: During January and July all known feedlots in the United States with capacity of 1,000 or more head are surveyed to provide data for cattle on feed estimates. During the other months, all known feedlots from 16 States are surveyed. The 16 States account for approximately 98 percent of the cattle on feed in feedlots with capacity of 1,000 or more head. Individual State estimates are published monthly for 11 of the 16 States. Data collected from the remaining 5 States are used to establish the "Other States" estimates. These 5 States include Illinois, Minnesota, New Mexico, Oregon, and Wyoming. The "Other States" category represents all cattle on feed with a capacity of 1,000 or more head for the rest of the United States.

Estimating Procedures: These cattle on feed estimates were prepared by the Agricultural Statistics Board after reviewing recommendations and analysis submitted by each State office. Regional and State survey data were reviewed for reasonableness with each other and with estimates from the previous month when establishing the current estimates.

Revision Policy: Revisions to previous estimates are made to improve month to month relationships. Estimates for the previous month are subject to revision in all States each month when current estimates are made. In February, all monthly estimates for the previous year, and the number of feedlots and annual marketings from two years ago are reviewed and subject to revisions. The reviews are primarily based on slaughter data, state check-off or brand data, and any other data that may have been received after the original estimate was made. Estimates will also be reviewed after data from the Census of Agriculture are available. No revisions will be made after that date and estimates become final.

Reliability: Since all 1,000+ capacity cattle on feed operators in every State are not included in the monthly survey, survey estimates are subject to sampling variability. Survey results are also subject to non-sampling errors such as omissions, duplications, and mistakes in reporting, recording, and processing the data. The effects of these errors cannot be measured directly. They are minimized through rigid quality controls in the data collection process and through a careful review of all reported data for consistency and reasonableness.

To assist users in evaluating the reliability of estimates in this report, the "**Root Mean Square Error**" is shown for selected items in the table on the following page. The "Root Mean Square Error" is a statistical measure based on past performance and is computed using the differences between first and latest estimates. The "Root Mean Square Error" for cattle on feed inventory estimates over the past 24 months is 0.2 percent. This means that chances are 2 out of 3 that the final estimate will not be above or below the current estimate of 11.2 million head by more than 0.1 percent. Chances are 9 out of 10 that the difference will not exceed 0.3 percent.

The table on the following page shows a 24 month record of the range of differences between first and latest estimates for selected items. Using estimates of number on feed as an example, changes between the first estimate and the latest estimate during the past 24 months have averaged 13,000 head, ranging from 0 to 47,000 head. During this period the initial estimate has been above the latest estimate 13 times and has been below the latest estimate 2 times. This does not imply that the initial estimate is likely to understate or overstate final inventory.

Reliability of Monthly Cattle on Feed Estimates

[[Based on data for the past 24 months]]

Item	Root mean square error	90 percent confidence level	Difference between first and latest estimate				
			Average	Smallest	Largest	Months	
						Below latest	Above latest
	(percent)	(percent)	(1,000)	(1,000)	(1,000)	(number)	(number)
Number on feed	0.2	0.3	13	0	47	2	13
Placements	0.4	0.6	4	0	20	4	9
Marketings	0.3	0.5	3	0	20	7	5

Information Contacts

Listed below are the commodity specialists in the Livestock Branch of the National Agricultural Statistics Service to contact for additional information. E-mail inquiries may be sent to nass@nass.usda.gov

Dan Kerestes, Chief, Livestock Branch	(202) 720-3570
Scott Hollis, Head, Livestock Section	(202) 690-2424
Travis Averill – Cattle, Cattle on Feed	(202) 720-3040
Sherry Bertramsen – Livestock Slaughter	(515) 284-4340
Doug Bounds – Hogs and Pigs	(202) 720-3106
Donnie Fike – Dairy Products	(202) 690-3236
Mike Miller – Milk Production and Milk Cows	(202) 720-3278
Alissa Cowell-Mytar – Sheep and Goats	(202) 720-4751

Access to NASS Reports

For your convenience, you may access NASS reports and products the following ways:

- All reports are available electronically, at no cost, on the NASS web site: <http://www.nass.usda.gov>
- Both national and state specific reports are available via a free e-mail subscription. To set-up this free subscription, visit <http://www.nass.usda.gov> and in the “Follow NASS” box under “Receive reports by Email,” click on “National” or “State” to select the reports you would like to receive.

For more information on NASS surveys and reports, call the NASS Agricultural Statistics Hotline at (800) 727-9540, 7:30 a.m. to 4:00 p.m. ET, or e-mail: nass@nass.usda.gov.

The United States Department of Agriculture (USDA) prohibits discrimination in all its programs and activities on the basis of race, color, national origin, age, disability, and where applicable, sex, marital status, familial status, parental status, religion, sexual orientation, political beliefs, genetic information, reprisal, or because all or a part of an individual's income is derived from any public assistance program. (Not all prohibited bases apply to all programs.) Persons with disabilities who require alternative means for communication of program information (Braille, large print, audiotape, etc.) should contact USDA's TARGET Center at (202) 720-2600 (voice and TDD).

To file a complaint of discrimination, write to USDA, Assistant Secretary for Civil Rights, Office of the Assistant Secretary for Civil Rights, 1400 Independence Avenue, S.W., Stop 9410, Washington, DC 20250-9410, or call toll-free at (866) 632-9992 (English) or (800) 877-8339 (TDD) or (866) 377-8642 (English Federal-relay) or (800) 845-6136 (Spanish Federal-relay). USDA is an equal opportunity provider and employer.



Managing Risk 21st *in the* CENTURY

February 21-22, 2013
Crystal Gateway Marriott Hotel
Arlington, Virginia

www.usda.gov/oce/forum



USDA is an equal opportunity provider and employer.