



Cattle on Feed

ISSN: 1948-9080

Released August 23, 2013, by the National Agricultural Statistics Service (NASS), Agricultural Statistics Board, United States Department of Agriculture (USDA).

United States Cattle on Feed Down 6 Percent

Cattle and calves on feed for slaughter market in the United States for feedlots with capacity of 1,000 or more head totaled 10.0 million head on August 1, 2013. The inventory was 6 percent below August 1, 2012.

Placements in feedlots during July totaled 1.72 million, 10 percent below 2012. Net placements were 1.66 million head. During July, placements of cattle and calves weighing less than 600 pounds were 390,000, 600-699 pounds were 275,000, 700-799 pounds were 455,000, and 800 pounds and greater were 602,000.

Marketings of fed cattle during July totaled 2.00 million, 5 percent above 2012.

Other disappearance totaled 64,000 during July, 2 percent above 2012.

Number of Cattle on Feed, Placements, Marketings, and Other Disappearance on 1,000+ Capacity Feedlots – United States: August 1, 2012 and 2013

Item	Number		Percent of previous year
	2012	2013	
	(1,000 head)	(1,000 head)	(percent)
On feed July 1	10,710	10,368	97
Placed on feed during July	1,922	1,722	90
Fed cattle marketed during July	1,913	2,000	105
Other disappearance during July	63	64	102
On feed August 1	10,656	10,026	94

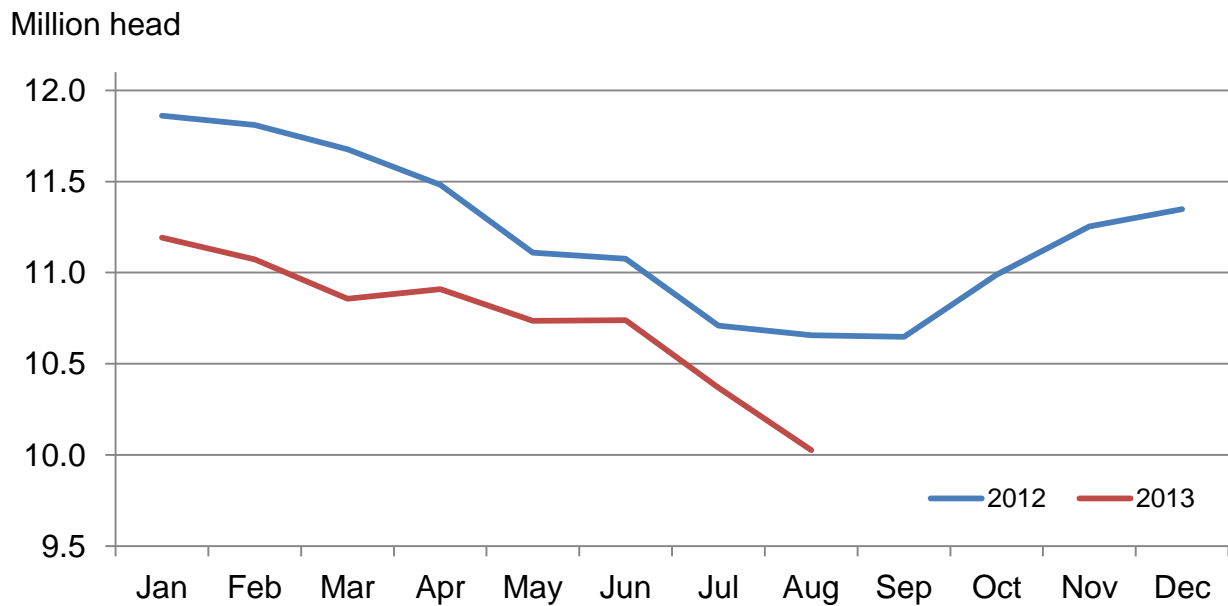
Number of Cattle on Feed, Placements, Marketings, and Other Disappearance on 1,000+ Capacity Feedlots – United States: July 1, 2012 and 2013

Item	Number		Percent of previous year
	2012	2013	
	(1,000 head)	(1,000 head)	(percent)
On feed June 1	11,077	10,739	97
Placed on feed during June	1,664	1,587	95
Fed cattle marketed during June	1,965	1,895	96
Other disappearance during June	66	63	95
On feed July 1	10,710	10,368	97

Number of Cattle on Feed on 1,000+ Capacity Feedlots by Month – States and United States: 2012 and 2013

State	August 1, 2012	July 1, 2013	August 1, 2013		
			Number	Percent of previous year	Percent of previous month
	(1,000 head)	(1,000 head)	(1,000 head)	(percent)	(percent)
Arizona	274	267	262	96	98
California	475	515	515	108	100
Colorado	940	920	870	93	95
Idaho	190	195	185	97	95
Iowa	600	580	560	93	97
Kansas	2,160	2,010	2,000	93	100
Nebraska	2,230	2,180	2,080	93	95
Oklahoma	320	305	285	89	93
South Dakota	190	200	180	95	90
Texas	2,650	2,560	2,490	94	97
Washington	210	203	189	90	93
Other States	417	433	410	98	95
United States	10,656	10,368	10,026	94	97

Cattle on Feed Inventory on 1,000+ Capacity Feedlots – United States

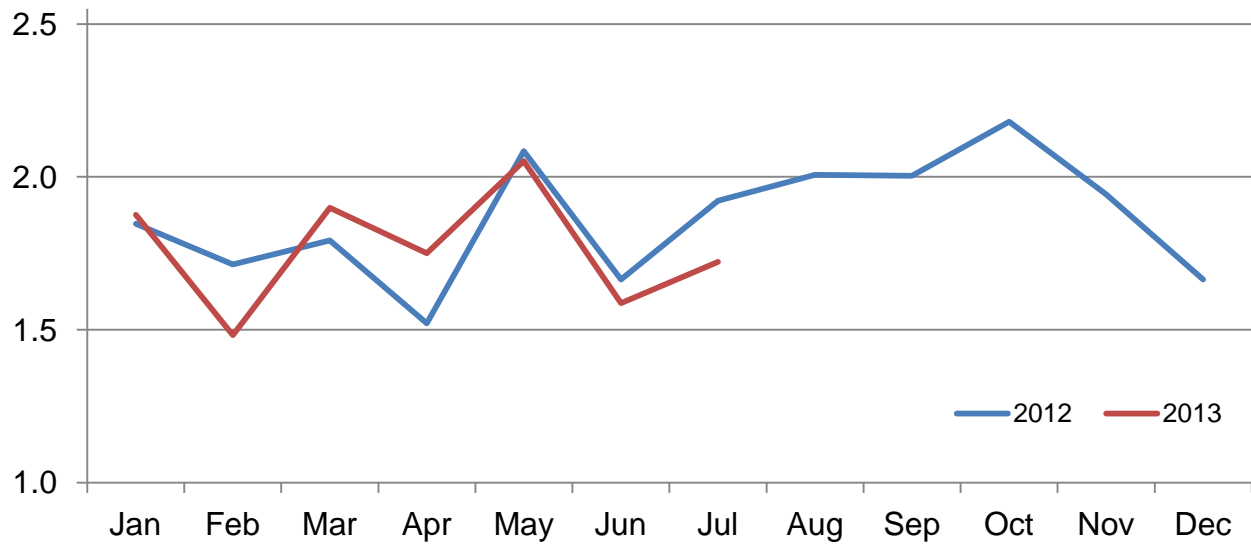


Number of Cattle Placed on Feed on 1,000+ Capacity Feedlots by Month – States and United States: 2012 and 2013

State	During July 2012 (1,000 head)	During June 2013 (1,000 head)	During July 2013		
			Number (1,000 head)	Percent of previous year (percent)	Percent of previous month (percent)
Arizona	22	23	23	105	100
California	52	61	57	110	93
Colorado	155	120	125	81	104
Idaho	35	36	39	111	108
Iowa	52	47	48	92	102
Kansas	540	355	440	81	124
Nebraska	410	350	380	93	109
Oklahoma	68	49	45	66	92
South Dakota	20	27	19	95	70
Texas	475	425	460	97	108
Washington	40	39	41	103	105
Other States	53	55	45	85	82
United States	1,922	1,587	1,722	90	109

Number of Cattle Placed on 1,000+ Capacity Feedlots – United States

Million head



Number of Cattle Placed on Feed by Weight Group on 1,000+ Capacity Feedlots by Month – States and United States: 2012 and 2013

State	During July									
	Under 600 lbs		600-699 lbs		700-799 lbs		800+ lbs		Total	
	2012	2013	2012	2013	2012	2013	2012	2013	2012	2013
	(1,000 head)	(1,000 head)	(1,000 head)	(1,000 head)	(1,000 head)	(1,000 head)	(1,000 head)	(1,000 head)	(1,000 head)	(1,000 head)
Colorado	25	30	20	25	40	30	70	40	155	125
Kansas	85	60	105	75	180	145	170	160	540	440
Nebraska	70	45	70	55	90	90	180	190	410	380
Texas	225	165	85	75	100	130	65	90	475	460
Other States	95	90	45	45	60	60	142	122	342	317
United States	500	390	325	275	470	455	627	602	1,922	1,722

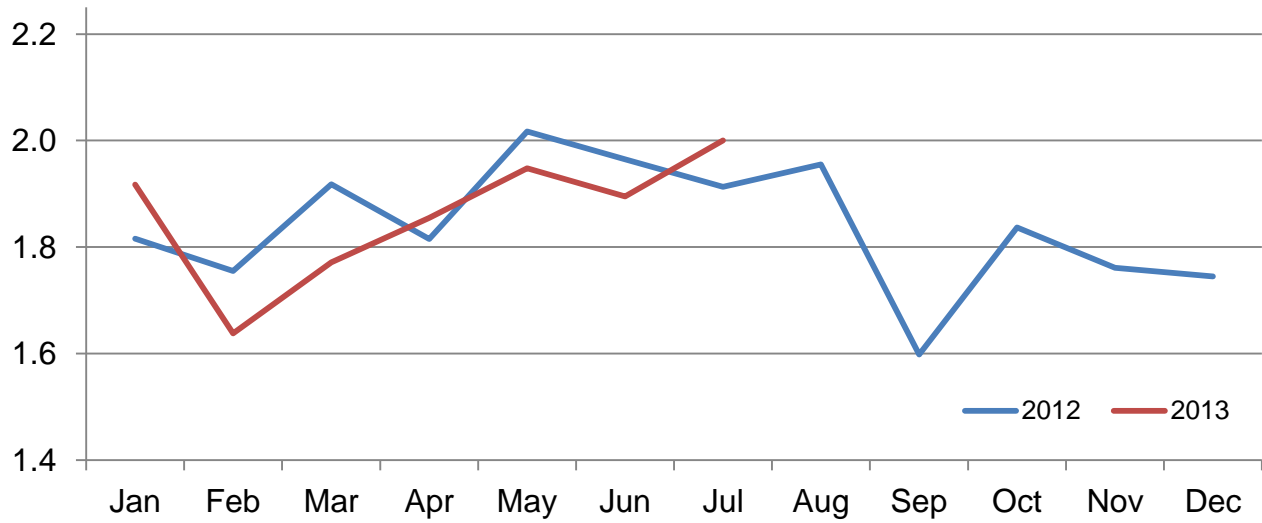
State	During June									
	Under 600 lbs		600-699 lbs		700-799 lbs		800+ lbs		Total	
	2012	2013	2012	2013	2012	2013	2012	2013	2012	2013
	(1,000 head)	(1,000 head)	(1,000 head)	(1,000 head)	(1,000 head)	(1,000 head)	(1,000 head)	(1,000 head)	(1,000 head)	(1,000 head)
Colorado	25	30	20	15	40	30	40	45	125	120
Kansas	95	50	80	55	110	100	105	150	390	355
Nebraska	70	30	70	50	90	85	155	185	385	350
Texas	180	125	100	75	75	135	65	90	420	425
Other States	90	80	50	37	75	65	129	155	344	337
United States	460	315	320	232	390	415	494	625	1,664	1,587

Number of Cattle Marketed on 1,000+ Capacity Feedlots by Month – States and United States: 2012 and 2013

State	During July 2012	During June 2013	During July 2013		
			Number	Percent of previous year	Percent of previous month
	(1,000 head)	(1,000 head)	(1,000 head)	(percent)	(percent)
Arizona	26	27	27	104	100
California	54	53	55	102	104
Colorado	180	150	170	94	113
Idaho	44	45	48	109	107
Iowa	70	75	64	91	85
Kansas	415	395	435	105	110
Nebraska	440	480	460	105	96
Oklahoma	66	53	64	97	121
South Dakota	39	41	37	95	90
Texas	475	480	520	109	108
Washington	39	48	54	138	113
Other States	65	48	66	102	138
United States	1,913	1,895	2,000	105	106

Number of Cattle Marketed on 1,000+ Capacity Feedlots – United States

Million head



Other Disappearance on 1,000+ Capacity Feedlots by Month – States and United States: 2012 and 2013

State	During July 2012 (1,000 head)	During June 2013 (1,000 head)	During July 2013		
			Number (1,000 head)	Percent of previous year (percent)	Percent of previous month (percent)
Arizona	1	1	1	100	100
California	3	3	2	67	67
Colorado	5	10	5	100	50
Idaho	1	1	1	100	100
Iowa	2	2	4	200	200
Kansas	15	10	15	100	150
Nebraska	10	10	20	200	200
Oklahoma	2	1	1	50	100
South Dakota	1	1	2	200	200
Texas	20	15	10	50	67
Washington	1	2	1	100	50
Other States	2	7	2	100	29
United States	63	63	64	102	102

Terms and Definitions of Cattle on Feed Estimates

Cattle on feed are animals being fed a ration of grain, silage, hay and/or protein supplement for slaughter market that are expected to produce a carcass that will grade select or better. It excludes cattle being "backgrounded only" for later sale as feeders or later placement in another feedlot.

Placements are cattle put into a feedlot, fed a ration which will produce a carcass that will grade select or better, and are intended for the slaughter market.

Marketings are cattle shipped out of feedlots to a slaughter market.

Other disappearance includes death loss, movement from feedlots to pasture, and shipments to other feedlots for further feeding.

Reliability of Cattle on Feed Estimates

Survey Procedures: During January and July all known feedlots in the United States with capacity of 1,000 or more head are surveyed to provide data for cattle on feed estimates. During the other months, all known feedlots from 16 States are surveyed. The 16 States account for approximately 98 percent of the cattle on feed in feedlots with capacity of 1,000 or more head. Individual State estimates are published monthly for 11 of the 16 States. Data collected from the remaining 5 States are used to establish the "Other States" estimates. These 5 States include Illinois, Minnesota, New Mexico, Oregon, and Wyoming. The "Other States" category represents all cattle on feed with a capacity of 1,000 or more head for the rest of the United States.

Estimating Procedures: These cattle on feed estimates were prepared by the Agricultural Statistics Board after reviewing recommendations and analysis submitted by each State office. Regional and State survey data were reviewed for reasonableness with each other and with estimates from the previous month when establishing the current estimates.

Revision Policy: Revisions to previous estimates are made to improve month to month relationships. Estimates for the previous month are subject to revision in all States each month when current estimates are made. In February, all monthly estimates for the previous year, and the number of feedlots and annual marketings from two years ago are reviewed and subject to revisions. The reviews are primarily based on slaughter data, state check-off or brand data, and any other data that may have been received after the original estimate was made. Estimates will also be reviewed after data from the Census of Agriculture are available. No revisions will be made after that date and estimates become final.

Reliability: Since all 1,000+ capacity cattle on feed operators in every State are not included in the monthly survey, survey estimates are subject to sampling variability. Survey results are also subject to non-sampling errors such as omissions, duplications, and mistakes in reporting, recording, and processing the data. The effects of these errors cannot be measured directly. They are minimized through rigid quality controls in the data collection process and through a careful review of all reported data for consistency and reasonableness.

To assist users in evaluating the reliability of estimates in this report, the "**Root Mean Square Error**" is shown for selected items in the table on the following page. The "Root Mean Square Error" is a statistical measure based on past performance and is computed using the differences between first and latest estimates. The "Root Mean Square Error" for cattle on feed inventory estimates over the past 24 months is 0.1 percent. This means that chances are 2 out of 3 that the final estimate will not be above or below the current estimate of 10.0 million head by more than 0.1 percent. Chances are 9 out of 10 that the difference will not exceed 0.2 percent.

The table on the following page shows a 24 month record of the range of differences between first and latest estimates for selected items. Using estimates of number on feed as an example, changes between the first estimate and the latest estimate during the past 24 months have averaged 8,000 head, ranging from 0 to 47,000 head. During this period the initial estimate has been above the latest estimate 6 times and has been below the latest estimate 3 times. This does not imply that the initial estimate is likely to understate or overstate final inventory.

Reliability of Monthly Cattle on Feed Estimates

[Based on data for the past 24 months]

Item	Root mean square error	90 percent confidence level	Difference between first and latest estimate				
			Average	Smallest	Largest	Months	
						Below latest	Above latest
	(percent)	(percent)	(1,000)	(1,000)	(1,000)	(number)	(number)
Number on feed	0.1	0.2	8	0	47	3	6
Placements	0.3	0.5	3	0	20	4	5
Marketings	0.3	0.5	2	0	20	5	2

Information Contacts

Listed below are the commodity specialists in the Livestock Branch of the National Agricultural Statistics Service to contact for additional information. E-mail inquiries may be sent to nass@nass.usda.gov

Dan Kerestes, Chief, Livestock Branch	(202) 720-3570
Scott Hollis, Head, Livestock Section	(202) 690-2424
Travis Averill – Cattle, Cattle on Feed	(202) 720-3040
Doug Bounds – Hogs and Pigs	(202) 720-3106
Alissa Cowell-Mytar – Sheep and Goats	(202) 720-4751
Donnie Fike – Dairy Products	(202) 690-3236
Tiffany Hora – Livestock Slaughter	(515) 284-4340
Mike Miller – Milk Production and Milk Cows	(202) 720-3278

Access to NASS Reports

For your convenience, you may access NASS reports and products the following ways:

- All reports are available electronically, at no cost, on the NASS web site: <http://www.nass.usda.gov>
- Both national and state specific reports are available via a free e-mail subscription. To set-up this free subscription, visit <http://www.nass.usda.gov> and in the “Follow NASS” box under “Receive reports by Email,” click on “National” or “State” to select the reports you would like to receive.

For more information on NASS surveys and reports, call the NASS Agricultural Statistics Hotline at (800) 727-9540, 7:30 a.m. to 4:00 p.m. ET, or e-mail: nass@nass.usda.gov.

The United States Department of Agriculture (USDA) prohibits discrimination in all its programs and activities on the basis of race, color, national origin, age, disability, and where applicable, sex, marital status, familial status, parental status, religion, sexual orientation, political beliefs, genetic information, reprisal, or because all or a part of an individual's income is derived from any public assistance program. (Not all prohibited bases apply to all programs.) Persons with disabilities who require alternative means for communication of program information (Braille, large print, audiotape, etc.) should contact USDA's TARGET Center at (202) 720-2600 (voice and TDD).

To file a complaint of discrimination, write to USDA, Assistant Secretary for Civil Rights, Office of the Assistant Secretary for Civil Rights, 1400 Independence Avenue, S.W., Stop 9410, Washington, DC 20250-9410, or call toll-free at (866) 632-9992 (English) or (800) 877-8339 (TDD) or (866) 377-8642 (English Federal-relay) or (800) 845-6136 (Spanish Federal-relay). USDA is an equal opportunity provider and employer.