



Cattle on Feed

ISSN: 1948-9080

Released September 20, 2013, by the National Agricultural Statistics Service (NASS), Agricultural Statistics Board, United States Department of Agriculture (USDA).

United States Cattle on Feed Down 7 Percent

Cattle and calves on feed for slaughter market in the United States for feedlots with capacity of 1,000 or more head totaled 9.9 million head on September 1, 2013. The inventory was 7 percent below September 1, 2012.

Placements in feedlots during August totaled 1.79 million, 11 percent below 2012. Net placements were 1.73 million head. During August, placements of cattle and calves weighing less than 600 pounds were 405,000, 600-699 pounds were 338,000, 700-799 pounds were 430,000, and 800 pounds and greater were 615,000. Placements for the month of August are the lowest since the series began in 1996.

Marketings of fed cattle during August totaled 1.88 million, 4 percent below 2012. Monthly marketings for August are the second lowest since the series began in 1996.

Other disappearance totaled 55,000 during August, 10 percent below 2012.

Number of Cattle on Feed, Placements, Marketings, and Other Disappearance on 1,000+ Capacity Feedlots – United States: September 1, 2012 and 2013

Item	Number		Percent of previous year
	2012	2013	
	(1,000 head)	(1,000 head)	(percent)
On feed August 1	10,656	10,026	94
Placed on feed during August	2,007	1,788	89
Fed cattle marketed during August	1,955	1,883	96
Other disappearance during August	61	55	90
On feed September 1	10,647	9,876	93

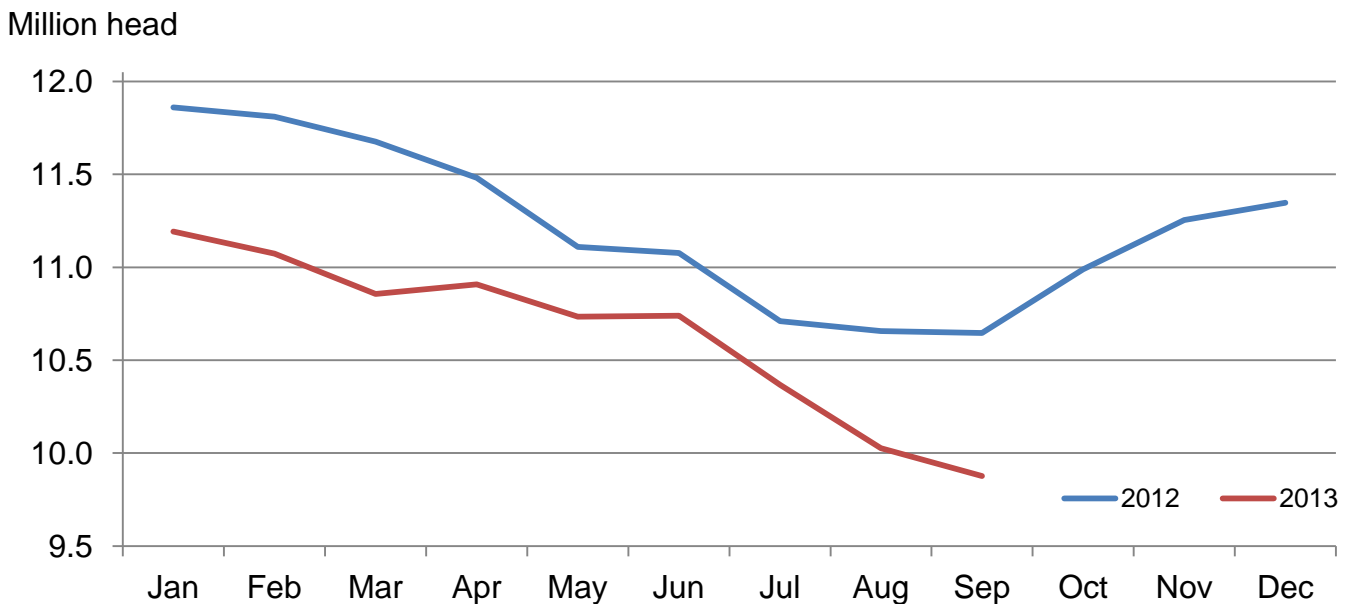
Number of Cattle on Feed, Placements, Marketings, and Other Disappearance on 1,000+ Capacity Feedlots – United States: August 1, 2012 and 2013

Item	Number		Percent of previous year
	2012	2013	
	(1,000 head)	(1,000 head)	(percent)
On feed July 1	10,710	10,368	97
Placed on feed during July	1,922	1,722	90
Fed cattle marketed during July	1,913	2,000	105
Other disappearance during July	63	64	102
On feed August 1	10,656	10,026	94

Number of Cattle on Feed on 1,000+ Capacity Feedlots by Month – States and United States: 2012 and 2013

State	September 1, 2012	August 1, 2013	September 1, 2013		
			Number	Percent of previous year	Percent of previous month
	(1,000 head)	(1,000 head)	(1,000 head)	(percent)	(percent)
Arizona	271	262	266	98	102
California	480	515	505	105	98
Colorado	930	870	830	89	95
Idaho	205	185	190	93	103
Iowa	590	560	550	93	98
Kansas	2,180	2,000	1,980	91	99
Nebraska	2,240	2,080	2,090	93	100
Oklahoma	325	285	280	86	98
South Dakota	185	180	170	92	94
Texas	2,620	2,490	2,430	93	98
Washington	208	189	184	88	97
Other States	413	410	401	97	98
United States	10,647	10,026	9,876	93	99

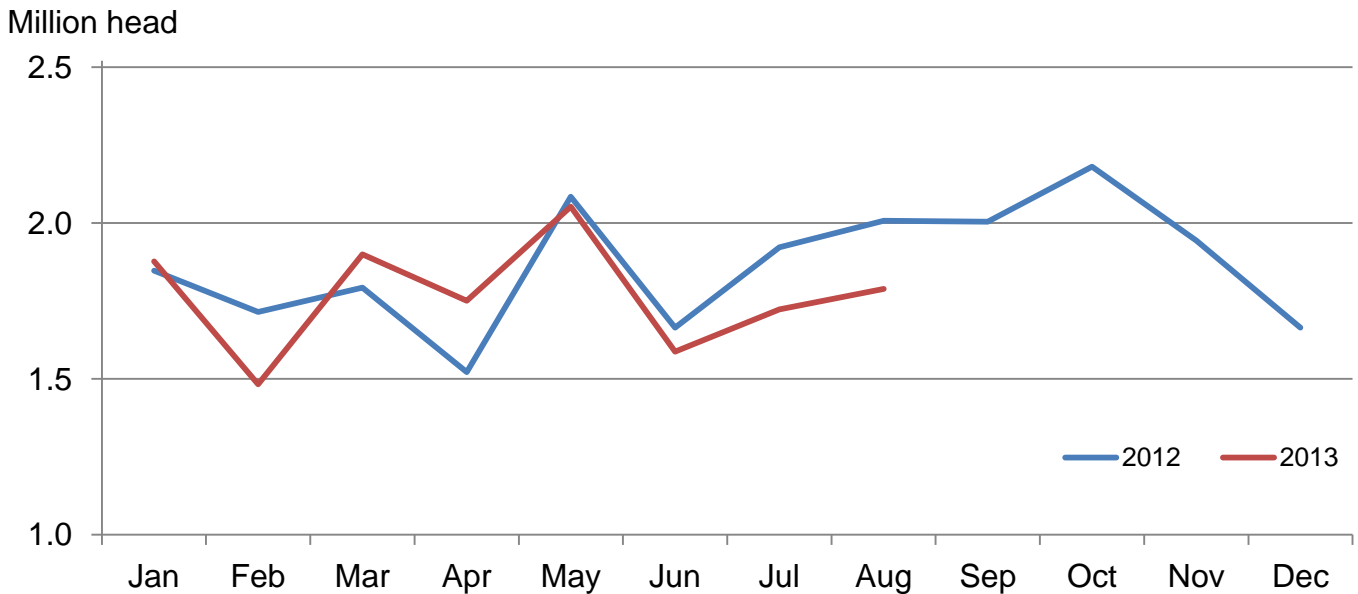
Cattle on Feed Inventory on 1,000+ Capacity Feedlots – United States



Number of Cattle Placed on Feed on 1,000+ Capacity Feedlots by Month – States and United States: 2012 and 2013

State	During August 2012 (1,000 head)	During July 2013 (1,000 head)	During August 2013		
			Number (1,000 head)	Percent of previous year (percent)	Percent of previous month (percent)
Arizona	18	23	23	128	100
California	63	57	55	87	96
Colorado	190	125	145	76	116
Idaho	53	39	52	98	133
Iowa	76	48	66	87	138
Kansas	435	440	385	89	88
Nebraska	470	380	440	94	116
Oklahoma	67	45	47	70	104
South Dakota	34	19	29	85	153
Texas	495	460	450	91	98
Washington	47	41	43	91	105
Other States	59	45	53	90	118
United States	2,007	1,722	1,788	89	104

Number of Cattle Placed on 1,000+ Capacity Feedlots – United States



Number of Cattle Placed on Feed by Weight Group on 1,000+ Capacity Feedlots by Month – States and United States: 2012 and 2013

State	During August									
	Under 600 lbs		600-699 lbs		700-799 lbs		800+ lbs		Total	
	2012	2013	2012	2013	2012	2013	2012	2013	2012	2013
	(1,000 head)	(1,000 head)	(1,000 head)	(1,000 head)	(1,000 head)	(1,000 head)	(1,000 head)	(1,000 head)	(1,000 head)	(1,000 head)
Colorado	30	25	25	20	50	45	85	55	190	145
Kansas	80	65	105	85	120	115	130	120	435	385
Nebraska	70	55	75	65	120	100	205	220	470	440
Texas	200	175	120	120	110	100	65	55	495	450
Other States	102	85	60	48	75	70	180	165	417	368
United States	482	405	385	338	475	430	665	615	2,007	1,788

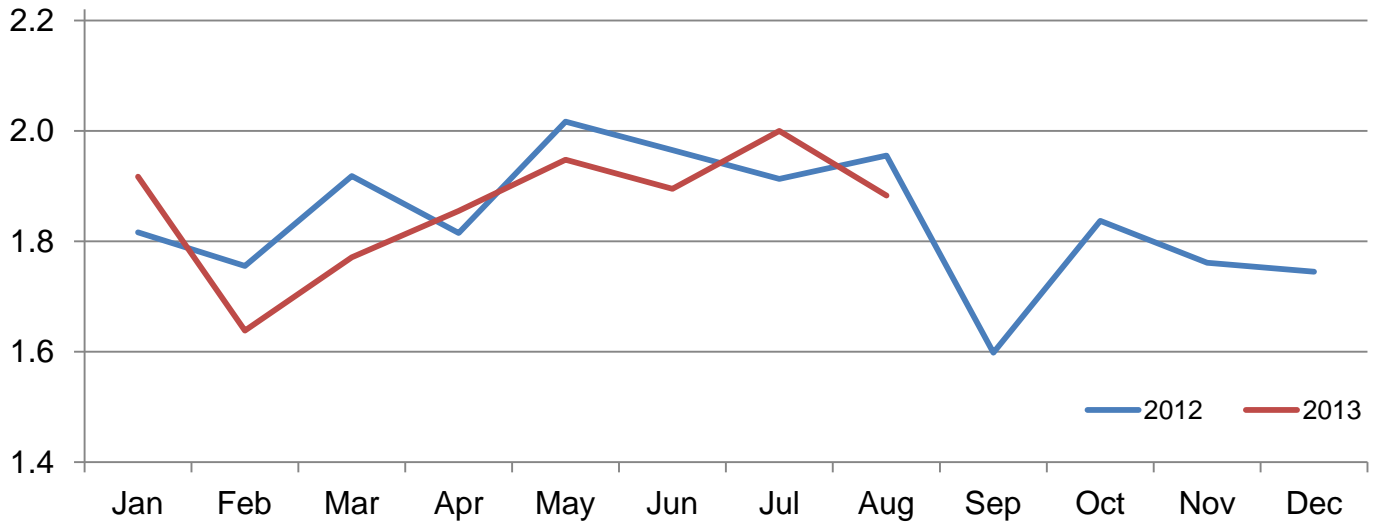
State	During July									
	Under 600 lbs		600-699 lbs		700-799 lbs		800+ lbs		Total	
	2012	2013	2012	2013	2012	2013	2012	2013	2012	2013
	(1,000 head)	(1,000 head)	(1,000 head)	(1,000 head)	(1,000 head)	(1,000 head)	(1,000 head)	(1,000 head)	(1,000 head)	(1,000 head)
Colorado	25	30	20	25	40	30	70	40	155	125
Kansas	85	60	105	75	180	145	170	160	540	440
Nebraska	70	45	70	55	90	90	180	190	410	380
Texas	225	165	85	75	100	130	65	90	475	460
Other States	95	90	45	45	60	60	142	122	342	317
United States	500	390	325	275	470	455	627	602	1,922	1,722

Number of Cattle Marketed on 1,000+ Capacity Feedlots by Month – States and United States: 2012 and 2013

State	During August 2012	During July 2013	During August 2013		
			Number	Percent of previous year	Percent of previous month
			(1,000 head)	(percent)	(percent)
Arizona	20	27	18	90	67
California	55	55	60	109	109
Colorado	195	170	180	92	106
Idaho	37	48	46	124	96
Iowa	84	64	73	87	114
Kansas	405	435	395	98	91
Nebraska	445	460	420	94	91
Oklahoma	60	64	51	85	80
South Dakota	38	37	38	100	103
Texas	510	520	495	97	95
Washington	48	54	47	98	87
Other States	58	66	60	103	91
United States	1,955	2,000	1,883	96	94

Number of Cattle Marketed on 1,000+ Capacity Feedlots – United States

Million head



Other Disappearance on 1,000+ Capacity Feedlots by Month – States and United States: 2012 and 2013

State	During August 2012 (1,000 head)	During July 2013 (1,000 head)	During August 2013		
			Number (1,000 head)	Percent of previous year (percent)	Percent of previous month (percent)
Arizona	1	1	1	100	100
California	3	2	5	167	250
Colorado	5	5	5	100	100
Idaho	1	1	1	100	100
Iowa	2	4	3	150	75
Kansas	10	15	10	100	67
Nebraska	15	20	10	67	50
Oklahoma	2	1	1	50	100
South Dakota	1	2	1	100	50
Texas	15	10	15	100	150
Washington	1	1	1	100	100
Other States	5	2	2	40	100
United States	61	64	55	90	86

Terms and Definitions of Cattle on Feed Estimates

Cattle on feed are animals being fed a ration of grain, silage, hay and/or protein supplement for slaughter market that are expected to produce a carcass that will grade select or better. It excludes cattle being "backgrounded only" for later sale as feeders or later placement in another feedlot.

Placements are cattle put into a feedlot, fed a ration which will produce a carcass that will grade select or better, and are intended for the slaughter market.

Marketings are cattle shipped out of feedlots to a slaughter market.

Other disappearance includes death loss, movement from feedlots to pasture, and shipments to other feedlots for further feeding.

Reliability of Cattle on Feed Estimates

Survey Procedures: During January and July all known feedlots in the United States with capacity of 1,000 or more head are surveyed to provide data for cattle on feed estimates. During the other months, all known feedlots from 16 States are surveyed. The 16 States account for approximately 98 percent of the cattle on feed in feedlots with capacity of 1,000 or more head. Individual State estimates are published monthly for 11 of the 16 States. Data collected from the remaining 5 States are used to establish the "Other States" estimates. These 5 States include Illinois, Minnesota, New Mexico, Oregon, and Wyoming. The "Other States" category represents all cattle on feed with a capacity of 1,000 or more head for the rest of the United States.

Estimating Procedures: These cattle on feed estimates were prepared by the Agricultural Statistics Board after reviewing recommendations and analysis submitted by each State office. Regional and State survey data were reviewed for reasonableness with each other and with estimates from the previous month when establishing the current estimates.

Revision Policy: Revisions to previous estimates are made to improve month to month relationships. Estimates for the previous month are subject to revision in all States each month when current estimates are made. In February, all monthly estimates for the previous year, and the number of feedlots and annual marketings from two years ago are reviewed and subject to revisions. The reviews are primarily based on slaughter data, state check-off or brand data, and any other data that may have been received after the original estimate was made. Estimates will also be reviewed after data from the Census of Agriculture are available. No revisions will be made after that date and estimates become final.

Reliability: Since all 1,000+ capacity cattle on feed operators in every State are not included in the monthly survey, survey estimates are subject to sampling variability. Survey results are also subject to non-sampling errors such as omissions, duplications, and mistakes in reporting, recording, and processing the data. The effects of these errors cannot be measured directly. They are minimized through rigid quality controls in the data collection process and through a careful review of all reported data for consistency and reasonableness.

To assist users in evaluating the reliability of estimates in this report, the "**Root Mean Square Error**" is shown for selected items in the table on the following page. The "Root Mean Square Error" is a statistical measure based on past performance and is computed using the differences between first and latest estimates. The "Root Mean Square Error" for cattle on feed inventory estimates over the past 24 months is 0.1 percent. This means that chances are 2 out of 3 that the final estimate will not be above or below the current estimate of 9.9 million head by more than 0.1 percent. Chances are 9 out of 10 that the difference will not exceed 0.2 percent.

The table on the following page shows a 24 month record of the range of differences between first and latest estimates for selected items. Using estimates of number on feed as an example, changes between the first estimate and the latest estimate during the past 24 months have averaged 6,000 head, ranging from 0 to 35,000 head. During this period the initial estimate has been above the latest estimate 5 times and has been below the latest estimate 3 times. This does not imply that the initial estimate is likely to understate or overstate final inventory.

Reliability of Monthly Cattle on Feed Estimates

[Based on data for the past 24 months]

Item	Root mean square error	90 percent confidence level	Difference between first and latest estimate				
			Average	Smallest	Largest	Months	
						Below latest	Above latest
	(percent)	(percent)	(1,000)	(1,000)	(1,000)	(number)	(number)
Number on feed	0.1	0.2	6	0	35	3	5
Placements	0.3	0.4	2	0	20	4	4
Marketings	0.2	0.4	2	0	20	4	2

Information Contacts

Listed below are the commodity specialists in the Livestock Branch of the National Agricultural Statistics Service to contact for additional information. E-mail inquiries may be sent to nass@nass.usda.gov

Dan Kerestes, Chief, Livestock Branch	(202) 720-3570
Scott Hollis, Head, Livestock Section	(202) 690-2424
Travis Averill – Cattle, Cattle on Feed	(202) 720-3040
Doug Bounds – Hogs and Pigs	(202) 720-3106
Alissa Cowell-Mytar – Sheep and Goats	(202) 720-4751
Donnie Fike – Dairy Products	(202) 690-3236
Tiffany Hora – Livestock Slaughter	(515) 284-4340
Mike Miller – Milk Production and Milk Cows	(202) 720-3278

Access to NASS Reports

For your convenience, you may access NASS reports and products the following ways:

- All reports are available electronically, at no cost, on the NASS web site: <http://www.nass.usda.gov>
- Both national and state specific reports are available via a free e-mail subscription. To set-up this free subscription, visit <http://www.nass.usda.gov> and in the “Follow NASS” box under “Receive reports by Email,” click on “National” or “State” to select the reports you would like to receive.

For more information on NASS surveys and reports, call the NASS Agricultural Statistics Hotline at (800) 727-9540, 7:30 a.m. to 4:00 p.m. ET, or e-mail: nass@nass.usda.gov.

The U.S. Department of Agriculture (USDA) prohibits discrimination against its customers, employees, and applicants for employment on the bases of race, color, national origin, age, disability, sex, gender identity, religion, reprisal, and where applicable, political beliefs, marital status, familial or parental status, sexual orientation, or all or part of an individual's income is derived from any public assistance program, or protected genetic information in employment or in any program or activity conducted or funded by the Department. (Not all prohibited bases will apply to all programs and/or employment activities.)

If you wish to file a Civil Rights program complaint of discrimination, complete the [USDA Program Discrimination Complaint Form](#) (PDF), found online at http://www.ascr.usda.gov/complaint_filing_cust.html, or at any USDA office, or call (866) 632-9992 to request the form. You may also write a letter containing all of the information requested in the form. Send your completed complaint form or letter to us by mail at U.S. Department of Agriculture, Director, Office of Adjudication, 1400 Independence Avenue, S.W., Washington, D.C. 20250-9410, by fax (202) 690-7442 or email at program.intake@usda.gov.