



Cattle on Feed

ISSN: 1948-9080

Released January 24, 2014, by the National Agricultural Statistics Service (NASS), Agricultural Statistics Board, United States Department of Agriculture (USDA).

United States Cattle on Feed Down 5 Percent

Cattle and calves on feed for slaughter market in the United States for feedlots with capacity of 1,000 or more head totaled 10.6 million head on January 1, 2014. The inventory was 5 percent below January 1, 2013. The inventory included 6.78 million steers and steer calves, down 4 percent from the previous year. This group accounted for 64 percent of the total inventory. Heifers and heifer calves accounted for 3.73 million head, down 8 percent from 2013.

Placements in feedlots during December totaled 1.68 million, 1 percent above 2012. Net placements were 1.60 million head. During December, placements of cattle and calves weighing less than 600 pounds were 485,000, 600-699 pounds were 420,000, 700-799 pounds were 391,000, and 800 pounds and greater were 385,000.

Marketings of fed cattle during December totaled 1.74 million, 1 percent below 2012.

Other disappearance totaled 77,000 during December, 4 percent above 2012.

Number of Cattle on Feed, Placements, Marketings, and Other Disappearance on 1,000+ Capacity Feedlots – United States: January 1, 2013 and 2014

[December preceeding year.]

Item	Number		Percent of previous year
	2013	2014	
	(1,000 head)	(1,000 head)	(percent)
On feed December 1	11,348	10,725	95
Placed on feed during December	1,664	1,681	101
Fed cattle marketed during December	1,745	1,736	99
Other disappearance during December	74	77	104
On feed January 1	11,193	10,593	95

Number of Cattle on Feed, Placements, Marketings, and Other Disappearance on 1,000+ Capacity Feedlots – United States: December 1, 2012 and 2013

Item	Number		Percent of previous year
	2012	2013	
	(1,000 head)	(1,000 head)	(percent)
On feed November 1	11,254	10,597	94
Placed on feed during November	1,943	1,882	97
Fed cattle marketed during November	1,761	1,681	95
Other disappearance during November	88	73	83
On feed December 1	11,348	10,725	95

Number on Feed by Class on 1,000+ Capacity Feedlots – United States: January 1, 2013 and 2014

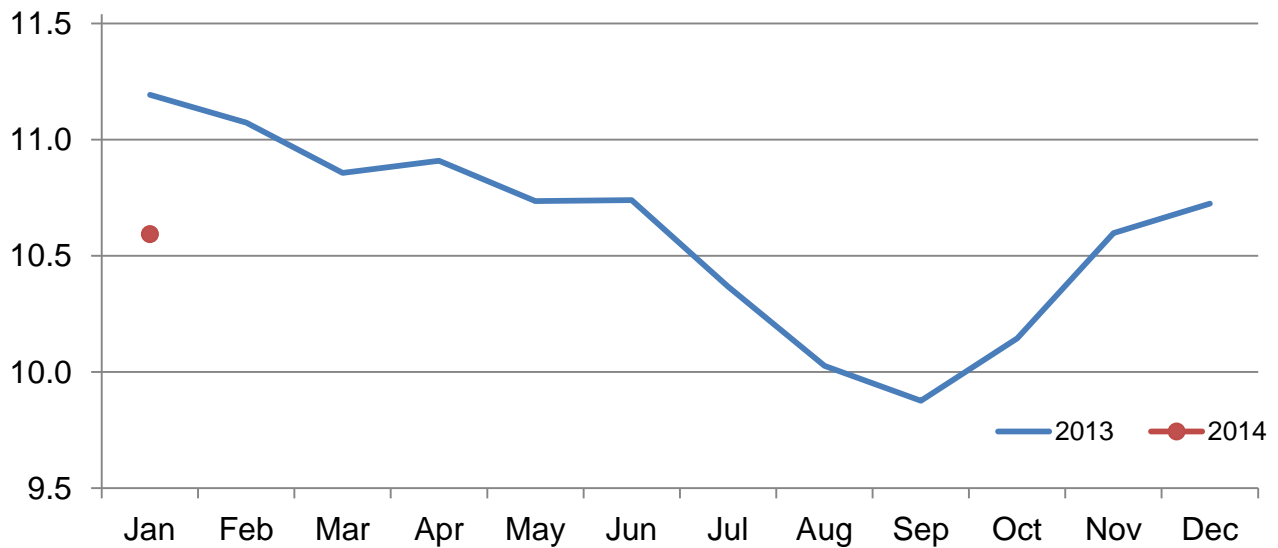
Item	Number		Percent of previous year
	2013	2014	
	(1,000 Head)	(1,000 Head)	(percent)
Class on Feed January 1			
Steers and Steer Calves	7,047	6,780	96
Heifers and Heifer Calves	4,070	3,733	92
Cows and Bulls	76	80	105

Number of Cattle on Feed on 1,000+ Capacity Feedlots by Month – States and United States: 2013 and 2014

State	January 1, 2013	December 1, 2013	January 1, 2014		
			Number	Percent of previous year	Percent of previous month
	(1,000 head)	(1,000 head)	(1,000 head)	(percent)	(percent)
Arizona	272	275	274	101	100
California	480	505	510	106	101
Colorado	1,000	970	960	96	99
Idaho	230	225	220	96	98
Iowa	620	610	620	100	102
Kansas	2,110	2,050	2,010	95	98
Nebraska	2,480	2,430	2,400	97	99
Oklahoma	345	265	260	75	98
South Dakota	230	220	230	100	105
Texas	2,720	2,510	2,440	90	97
Washington	247	207	201	81	97
Other States	459	458	468	102	102
United States	11,193	10,725	10,593	95	99

Cattle on Feed Inventory on 1,000+ Capacity Feedlots - United States

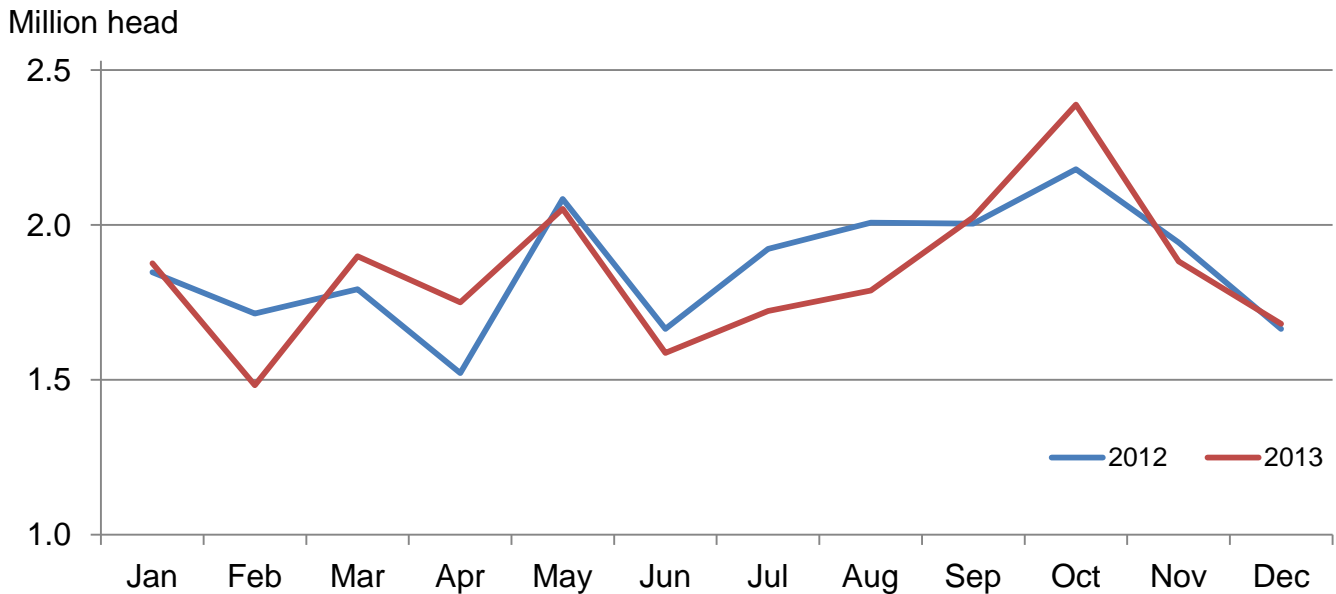
Million head



Number of Cattle Placed on Feed on 1,000+ Capacity Feedlots by Month – States and United States: 2012 and 2013

State	During December 2012 (1,000 head)	During November 2013 (1,000 head)	During December 2013		
			Number (1,000 head)	Percent of previous year (percent)	Percent of previous month (percent)
Arizona	29	30	28	97	93
California	50	64	59	118	92
Colorado	140	170	150	107	88
Idaho	26	42	32	123	76
Iowa	82	122	96	117	79
Kansas	365	370	360	99	97
Nebraska	390	475	405	104	85
Oklahoma	52	42	43	83	102
South Dakota	34	63	43	126	68
Texas	415	405	370	89	91
Washington	25	44	34	136	77
Other States	56	55	61	109	111
United States	1,664	1,882	1,681	101	89

Number of Cattle Placed on 1,000+ Capacity Feedlots - United States



Number of Cattle Placed on Feed by Weight Group on 1,000+ Capacity Feedlots by Month – States and United States: 2012 and 2013

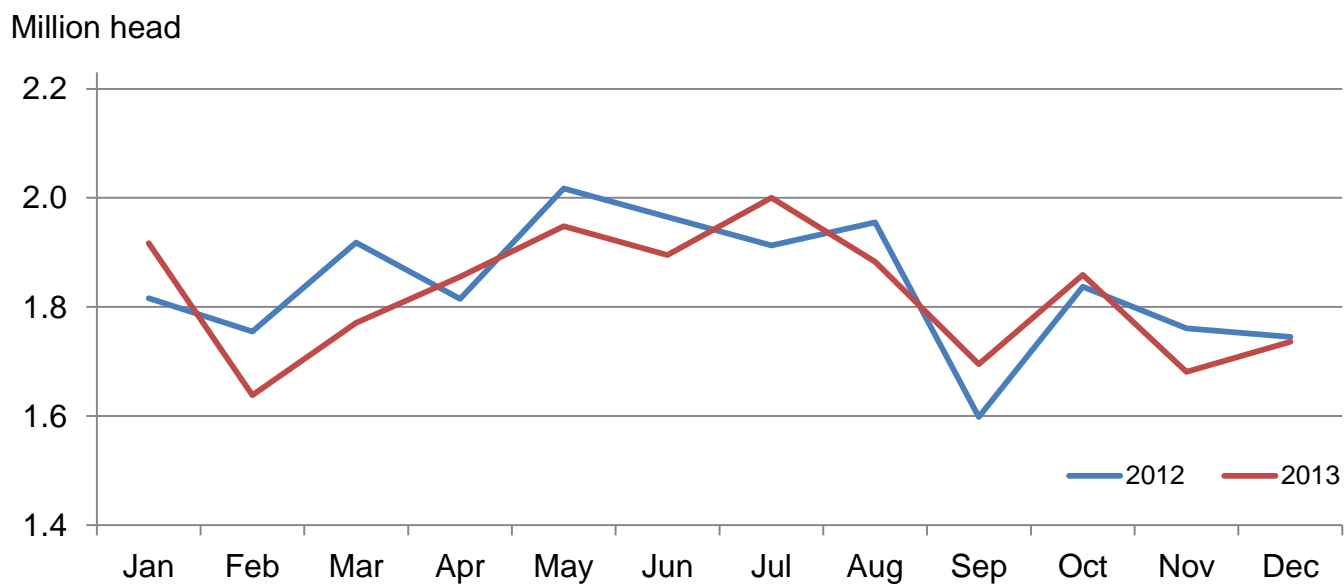
State	During December									
	Under 600 lbs		600-699 lbs		700-799 lbs		800+ lbs		Total	
	2012	2013	2012	2013	2012	2013	2012	2013	2012	2013
	(1,000 head)	(1,000 head)	(1,000 head)	(1,000 head)	(1,000 head)	(1,000 head)	(1,000 head)	(1,000 head)	(1,000 head)	(1,000 head)
Colorado	35	40	35	40	35	35	35	35	140	150
Kansas	70	70	100	90	105	110	90	90	365	360
Nebraska	70	80	90	100	110	95	120	130	390	405
Texas	200	160	100	90	65	75	50	45	415	370
Other States	120	135	90	100	64	76	80	85	354	396
United States	495	485	415	420	379	391	375	385	1,664	1,681

State	During November									
	Under 600 lbs		600-699 lbs		700-799 lbs		800+ lbs		Total	
	2012	2013	2012	2013	2012	2013	2012	2013	2012	2013
	(1,000 head)	(1,000 head)	(1,000 head)	(1,000 head)	(1,000 head)	(1,000 head)	(1,000 head)	(1,000 head)	(1,000 head)	(1,000 head)
Colorado	40	55	40	50	30	30	40	35	150	170
Kansas	80	80	90	90	115	110	90	90	375	370
Nebraska	120	120	120	135	80	80	145	140	465	475
Texas	230	165	105	115	80	75	50	50	465	405
Other States	185	165	95	120	80	67	128	110	488	462
United States	655	585	450	510	385	362	453	425	1,943	1,882

Number of Cattle Marketed on 1,000+ Capacity Feedlots by Month – States and United States: 2012 and 2013

State	During December 2012	During November 2013	During December 2013		
			Number	Percent of previous year	Percent of previous month
			(1,000 head)	(percent)	(percent)
Arizona	23	24	28	122	117
California	55	52	52	95	100
Colorado	155	145	150	97	103
Idaho	40	36	36	90	100
Iowa	68	100	84	124	84
Kansas	425	350	385	91	110
Nebraska	425	400	420	99	105
Oklahoma	49	45	45	92	100
South Dakota	33	41	30	91	73
Texas	380	405	420	111	104
Washington	38	39	37	97	95
Other States	54	44	49	91	111
United States	1,745	1,681	1,736	99	103

Number of Cattle Marketed on 1,000+ Capacity Feedlots – United States



Other Disappearance on 1,000+ Capacity Feedlots by Month – States and United States: 2012 and 2013

State	During December 2012 (1,000 head)	During November 2013 (1,000 head)	During December 2013		
			Number (1,000 head)	Percent of previous year (percent)	Percent of previous month (percent)
Arizona	1	1	1	100	100
California	5	2	2	40	100
Colorado	5	5	10	200	200
Idaho	1	1	1	100	100
Iowa	4	2	2	50	100
Kansas	20	20	15	75	75
Nebraska	15	15	15	100	100
Oklahoma	3	2	3	100	150
South Dakota	1	2	3	300	150
Texas	15	20	20	133	100
Washington	1	1	3	300	300
Other States	3	2	2	67	100
United States	74	73	77	104	105

Number on Feed by Class on 1,000+ Capacity Feedlots by Quarter – States and United States: 2013 and 2014

State	Steers and steer calves			Heifers and heifer calves			Cows and bulls		
	Jan 1, 2013	Oct 1, 2013	Jan 1, 2014	Jan 1, 2013	Oct 1, 2013	Jan 1, 2014	Jan 1, 2013	Oct 1, 2013	Jan 1, 2014
	(1,000 Head)	(1,000 Head)	(1,000 Head)	(1,000 Head)	(1,000 Head)	(1,000 Head)	(1,000 Head)	(1,000 Head)	(1,000 Head)
Arizona	264	261	268	8	7	6	0	0	0
California	405	455	470	75	44	40	0	1	0
Colorado	620	560	615	370	305	340	10	5	5
Idaho	126	115	125	99	90	91	5	5	4
Iowa	420	355	425	200	205	195	0	0	0
Kansas	1,160	1,060	1,060	945	935	945	5	5	5
Nebraska	1,530	1,390	1,545	930	810	820	20	10	35
Oklahoma	220	190	170	125	95	90	0	0	0
South Dakota	113	104	125	91	67	80	26	9	25
Texas	1,720	1,540	1,510	999	919	929	1	1	1
Washington	147	109	120	96	72	77	4	3	4
Other States	322	303	347	132	113	120	5	1	1
United States	7,047	6,442	6,780	4,070	3,662	3,733	76	40	80

Terms and Definitions of Cattle on Feed Estimates

Cattle on feed are animals being fed a ration of grain, silage, hay and/or protein supplement for slaughter market that are expected to produce a carcass that will grade select or better. It excludes cattle being "backgrounded only" for later sale as feeders or later placement in another feedlot.

Placements are cattle put into a feedlot, fed a ration which will produce a carcass that will grade select or better, and are intended for the slaughter market.

Marketings are cattle shipped out of feedlots to a slaughter market.

Other disappearance includes death loss, movement from feedlots to pasture, and shipments to other feedlots for further feeding.

Reliability of Cattle on Feed Estimates

Survey Procedures: During January and July all known feedlots in the United States with capacity of 1,000 or more head are surveyed to provide data for cattle on feed estimates. During the other months, all known feedlots from 16 States are surveyed. The 16 States account for approximately 98 percent of the cattle on feed in feedlots with capacity of 1,000 or more head. Individual State estimates are published monthly for 11 of the 16 States. Data collected from the remaining 5 States are used to establish the "Other States" estimates. These 5 States include Illinois, Minnesota, New Mexico, Oregon, and Wyoming. The "Other States" category represents all cattle on feed with a capacity of 1,000 or more head for the rest of the United States.

Estimating Procedures: These cattle on feed estimates were prepared by the Agricultural Statistics Board after reviewing recommendations and analysis submitted by each State office. Regional and State survey data were reviewed for reasonableness with each other and with estimates from the previous month when establishing the current estimates.

Revision Policy: Revisions to previous estimates are made to improve month to month relationships. Estimates for the previous month are subject to revision in all States each month when current estimates are made. In February, all monthly estimates for the previous year, and the number of feedlots and annual marketings from two years ago are reviewed and subject to revisions. The reviews are primarily based on slaughter data, state check-off or brand data, and any other data that may have been received after the original estimate was made. Estimates will also be reviewed after data from the Census of Agriculture are available. No revisions will be made after that date and estimates become final.

Reliability: Since all 1,000+ capacity cattle on feed operators in every State are not included in the monthly survey, survey estimates are subject to sampling variability. Survey results are also subject to non-sampling errors such as omissions, duplications, and mistakes in reporting, recording, and processing the data. The effects of these errors cannot be measured directly. They are minimized through rigid quality controls in the data collection process and through a careful review of all reported data for consistency and reasonableness.

To assist users in evaluating the reliability of estimates in this report, the "**Root Mean Square Error**" is shown for selected items in the table on the following page. The "Root Mean Square Error" is a statistical measure based on past performance and is computed using the differences between first and latest estimates. The "Root Mean Square Error" for cattle on feed inventory estimates over the past 24 months is 0.0 percent. This means that chances are 2 out of 3 that the final estimate will not be above or below the current estimate of 10.6 million head by more than 0.0 percent. Chances are 9 out of 10 that the difference will not exceed 0.1 percent.

The table on the following page shows a 24 month record of the range of differences between first and latest estimates for selected items. Using estimates of number on feed as an example, changes between the first estimate and the latest estimate during the past 24 months have averaged 2,000 head, ranging from 0 to 20,000 head. During this period the initial estimate has been above the latest estimate 2 times and has been below the latest estimate 3 times. This does not imply that the initial estimate is likely to understate or overstate final inventory.

Reliability of Monthly Cattle on Feed Estimates

[Based on data for the past 24 months]

Item	Root mean square error	90 percent confidence level	Difference between first and latest estimate				
			Average	Smallest	Largest	Months	
						Below latest	Above latest
	(percent)	(percent)	(1,000)	(1,000)	(1,000)	(number)	(number)
Number on feed	0.0	0.1	2	0	20	3	2
Placements	0.3	0.4	2	0	20	3	3
Marketings	0.2	0.4	1	0	20	2	2

Information Contacts

Listed below are the commodity specialists in the Livestock Branch of the National Agricultural Statistics Service to contact for additional information. E-mail inquiries may be sent to nass@nass.usda.gov

Dan Kerestes, Chief, Livestock Branch	(202) 720-3570
Scott Hollis, Head, Livestock Section	(202) 690-2424
Travis Averill – Cattle, Cattle on Feed	(202) 720-3040
Doug Bounds – Hogs and Pigs	(202) 720-3106
Alissa Cowell-Mytar – Sheep and Goats, Honey	(202) 720-4751
Donnie Fike – Dairy Products	(202) 690-3236
Tiffany Hora – Livestock Slaughter	(515) 284-4340
Mike Miller – Milk Production and Milk Cows	(202) 720-3278

Access to NASS Reports

For your convenience, you may access NASS reports and products the following ways:

- All reports are available electronically, at no cost, on the NASS web site: <http://www.nass.usda.gov>
- Both national and state specific reports are available via a free e-mail subscription. To set-up this free subscription, visit <http://www.nass.usda.gov> and in the “Follow NASS” box under “Receive reports by Email,” click on “National” or “State” to select the reports you would like to receive.

For more information on NASS surveys and reports, call the NASS Agricultural Statistics Hotline at (800) 727-9540, 7:30 a.m. to 4:00 p.m. ET, or e-mail: nass@nass.usda.gov.

The U.S. Department of Agriculture (USDA) prohibits discrimination against its customers, employees, and applicants for employment on the bases of race, color, national origin, age, disability, sex, gender identity, religion, reprisal, and where applicable, political beliefs, marital status, familial or parental status, sexual orientation, or all or part of an individual's income is derived from any public assistance program, or protected genetic information in employment or in any program or activity conducted or funded by the Department. (Not all prohibited bases will apply to all programs and/or employment activities.)

If you wish to file a Civil Rights program complaint of discrimination, complete the [USDA Program Discrimination Complaint Form](#) (PDF), found online at http://www.ascr.usda.gov/complaint_filing_cust.html, or at any USDA office, or call (866) 632-9992 to request the form. You may also write a letter containing all of the information requested in the form. Send your completed complaint form or letter to us by mail at U.S. Department of Agriculture, Director, Office of Adjudication, 1400 Independence Avenue, S.W., Washington, D.C. 20250-9410, by fax (202) 690-7442 or email at program.intake@usda.gov.



United States
Department of Agriculture

Agricultural Outlook Forum

February 20-21, 2014
Crystal Gateway Marriott Hotel
Arlington, Virginia

The Changing Face of Agriculture

USDA's annual event brings together leadership from throughout the agricultural community to discuss the

Changing Face of Agriculture.

Session topics include:

New Agricultural Census
Agriculture Supporting Our Veterans
Women in Agriculture
Agriculture & Social Media
Food Price and Farm Income Outlooks
Commodity and Weather Outlooks
U.S. Farm Land
International Trade
Conservation
Nutrition & Food Safety
Nanotechnology
Invasive Pests
Know Your Farmer, Know Your Food
Agroforestry
Climate Variability
Rural Economies
Disease Challenges & the Citrus Industry
Extension's 100-Year Anniversary

www.usda.gov/oce/forum

