



Cattle on Feed

ISSN: 1948-9080

Released May 16, 2014, by the National Agricultural Statistics Service (NASS), Agricultural Statistics Board, United States Department of Agriculture (USDA).

United States Cattle on Feed Down 1 Percent

Cattle and calves on feed for slaughter market in the United States for feedlots with capacity of 1,000 or more head totaled 10.6 million head on May 1, 2014. The inventory was 1 percent below May 1, 2013.

Placements in feedlots during April totaled 1.64 million, 5 percent below 2013. Net placements were 1.55 million head. During April, placements of cattle and calves weighing less than 600 pounds were 385,000, 600-699 pounds were 255,000, 700-799 pounds were 396,000, and 800 pounds and greater were 600,000.

Marketings of fed cattle during April totaled 1.78 million, 2 percent below 2013. Marketings for April are the lowest for the month since the series began in 1996.

Other disappearance totaled 83,000 during April, 20 percent above 2013.

Number of Cattle on Feed, Placements, Marketings, and Other Disappearance on 1,000+ Capacity Feedlots – United States: May 1, 2013 and 2014

Item	Number		Percent of previous year
	2013	2014	
	(1,000 head)	(1,000 head)	(percent)
On feed April 1	10,924	10,873	100
Placed on feed during April	1,720	1,636	95
Fed cattle marketed during April	1,815	1,778	98
Other disappearance during April	69	83	120
On feed May 1	10,760	10,648	99

Number of Cattle on Feed, Placements, Marketings, and Other Disappearance on 1,000+ Capacity Feedlots – United States: April 1, 2013 and 2014

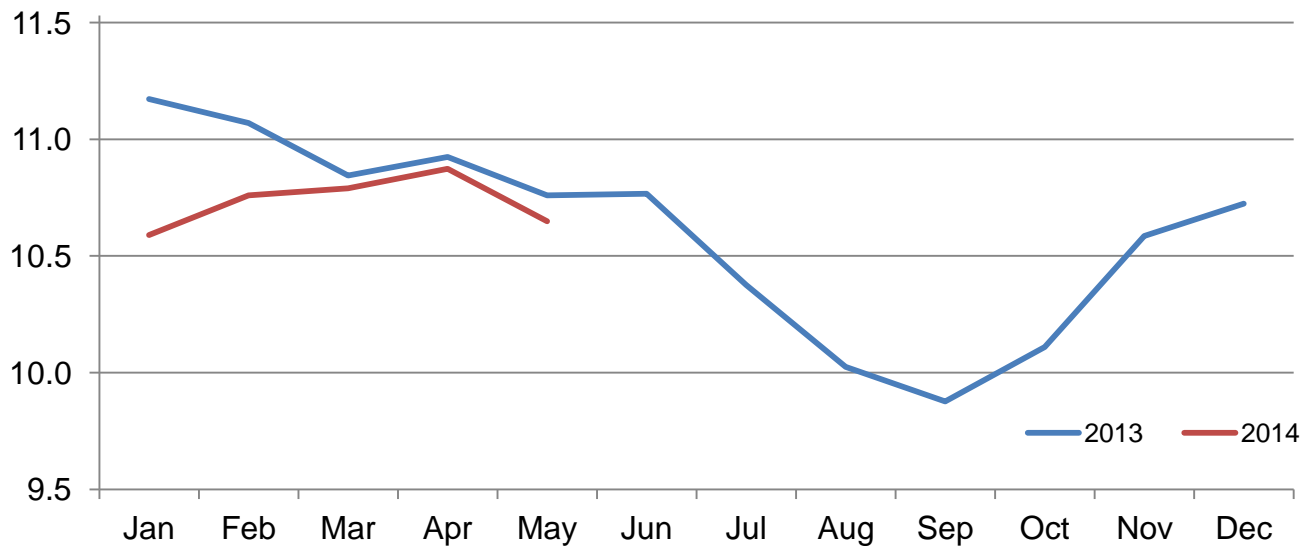
Item	Number		Percent of previous year
	2013	2014	
	(1,000 head)	(1,000 head)	(percent)
On feed March 1	10,845	10,790	99
Placed on feed during March	1,884	1,808	96
Fed cattle marketed during March	1,724	1,660	96
Other disappearance during March	81	65	80
On feed April 1	10,924	10,873	100

Number of Cattle on Feed on 1,000+ Capacity Feedlots by Month – States and United States: 2013 and 2014

State	May 1, 2013	April 1, 2014	May 1, 2014		
			Number	Percent of previous year	Percent of previous month
	(1,000 head)	(1,000 head)	(1,000 head)	(percent)	(percent)
Arizona	275	277	277	101	100
California	495	475	450	91	95
Colorado	960	970	960	100	99
Idaho	210	210	215	102	102
Iowa	620	670	660	106	99
Kansas	2,070	2,090	2,010	97	96
Minnesota	130	136	138	106	101
Nebraska	2,400	2,500	2,490	104	100
Oklahoma	295	275	255	86	93
South Dakota	225	240	235	104	98
Texas	2,540	2,500	2,430	96	97
Washington	220	210	208	95	99
Other States	320	320	320	100	100
United States	10,760	10,873	10,648	99	98

Cattle on Feed Inventory on 1,000+ Capacity Feedlots – United States

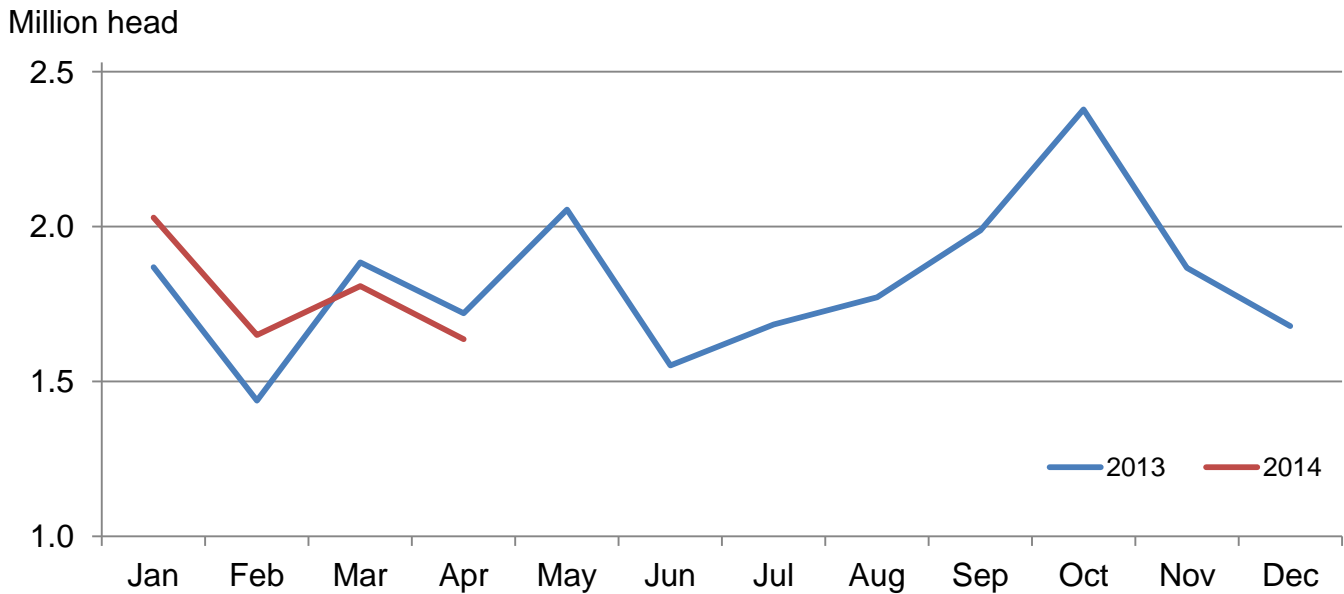
Million head



Number of Cattle Placed on Feed on 1,000+ Capacity Feedlots by Month – States and United States: 2013 and 2014

State	During April 2013 (1,000 head)	During March 2014 (1,000 head)	During April 2014		
			Number (1,000 head)	Percent of previous year (percent)	Percent of previous month (percent)
Arizona	26	30	26	100	87
California	62	53	57	92	108
Colorado	140	165	130	93	79
Idaho	33	34	32	97	94
Iowa	89	71	69	78	97
Kansas	335	390	325	97	83
Minnesota	16	18	16	100	89
Nebraska	440	410	420	95	102
Oklahoma	51	52	43	84	83
South Dakota	26	37	28	108	76
Texas	435	470	420	97	89
Washington	26	43	35	135	81
Other States	41	35	35	85	100
United States	1,720	1,808	1,636	95	90

Number of Cattle Placed on 1,000+ Capacity Feedlots – United States



Number of Cattle Placed on Feed by Weight Group on 1,000+ Capacity Feedlots by Month – States and United States: 2013 and 2014

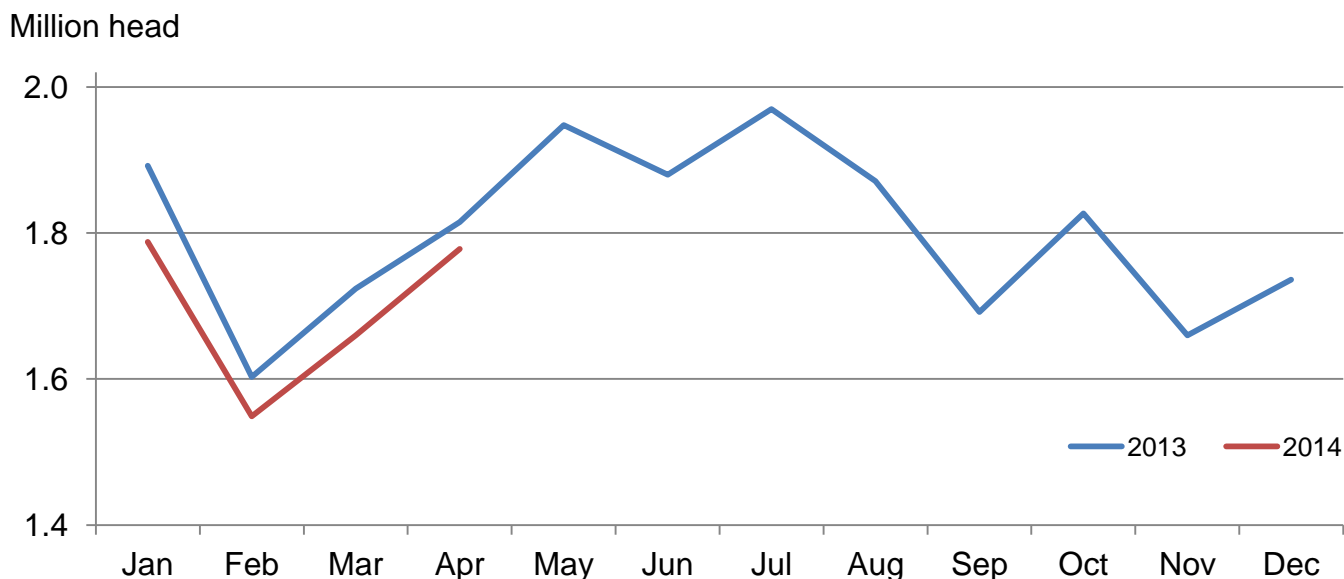
State	During April									
	Under 600 lbs		600-699 lbs		700-799 lbs		800+ lbs		Total	
	2013	2014	2013	2014	2013	2014	2013	2014	2013	2014
	(1,000 head)	(1,000 head)	(1,000 head)	(1,000 head)	(1,000 head)	(1,000 head)	(1,000 head)	(1,000 head)	(1,000 head)	(1,000 head)
Colorado	20	25	35	25	40	35	45	45	140	130
Kansas	55	60	50	50	90	90	140	125	335	325
Nebraska	70	65	70	65	105	95	195	195	440	420
Texas	140	140	65	70	115	110	115	100	435	420
Other States	85	95	50	45	90	66	145	135	370	341
United States	370	385	270	255	440	396	640	600	1,720	1,636

State	During March									
	Under 600 lbs		600-699 lbs		700-799 lbs		800+ lbs		Total	
	2013	2014	2013	2014	2013	2014	2013	2014	2013	2014
	(1,000 head)	(1,000 head)	(1,000 head)	(1,000 head)	(1,000 head)	(1,000 head)	(1,000 head)	(1,000 head)	(1,000 head)	(1,000 head)
Colorado	25	35	30	30	55	50	50	50	160	165
Kansas	60	65	60	55	130	110	175	160	425	390
Nebraska	55	55	60	65	110	105	175	185	400	410
Texas	170	170	115	90	160	125	85	85	530	470
Other States	100	100	50	55	80	78	139	140	369	373
United States	410	425	315	295	535	468	624	620	1,884	1,808

Number of Cattle Marketed on 1,000+ Capacity Feedlots by Month – States and United States: 2013 and 2014

State	During April 2013 (1,000 head)	During March 2014 (1,000 head)	During April 2014		
			Number	Percent of previous year	Percent of previous month
			(1,000 head)	(percent)	(percent)
Arizona	28	24	25	89	104
California	49	70	67	137	96
Colorado	150	130	130	87	100
Idaho	36	33	26	72	79
Iowa	97	69	76	78	110
Kansas	350	345	385	110	112
Minnesota	18	16	13	72	81
Nebraska	460	395	415	90	105
Oklahoma	60	46	62	103	135
South Dakota	30	35	30	100	86
Texas	460	430	480	104	112
Washington	35	29	36	103	124
Other States	42	38	33	79	87
United States	1,815	1,660	1,778	98	107

Number of Cattle Marketed on 1,000+ Capacity Feedlots – United States



Other Disappearance on 1,000+ Capacity Feedlots by Month – States and United States: 2013 and 2014

State	During April 2013 (1,000 head)	During March 2014 (1,000 head)	During April 2014		
			Number (1,000 head)	Percent of previous year (percent)	Percent of previous month (percent)
Arizona	1	1	1	100	100
California	3	8	15	500	188
Colorado	10	5	10	100	200
Idaho	2	1	1	50	100
Iowa	2	2	3	150	150
Kansas	15	15	20	133	133
Minnesota	1	1	1	100	100
Nebraska	10	15	15	150	100
Oklahoma	1	1	1	100	100
South Dakota	1	2	3	300	150
Texas	15	10	10	67	100
Washington	4	2	1	25	50
Other States	4	2	2	50	100
United States	69	65	83	120	128

Terms and Definitions of Cattle on Feed Estimates

Cattle on feed are animals being fed a ration of grain, silage, hay and/or protein supplement for slaughter market that are expected to produce a carcass that will grade select or better. It excludes cattle being "backgrounded only" for later sale as feeders or later placement in another feedlot.

Placements are cattle put into a feedlot, fed a ration which will produce a carcass that will grade select or better, and are intended for the slaughter market.

Marketings are cattle shipped out of feedlots to a slaughter market.

Other disappearance includes death loss, movement from feedlots to pasture, and shipments to other feedlots for further feeding.

Reliability of Cattle on Feed Estimates

Survey Procedures: During January and July all known feedlots in the United States with capacity of 1,000 or more head are surveyed to provide data for cattle on feed estimates. During the other months, all known feedlots from 16 States are surveyed. The 16 States account for approximately 98 percent of the cattle on feed in feedlots with capacity of 1,000 or more head. Individual State estimates are published monthly for 11 of the 16 States. Data collected from the remaining 5 States are used to establish the "Other States" estimates. These 5 States include Illinois, Minnesota, New Mexico, Oregon, and Wyoming. The "Other States" category represents all cattle on feed with a capacity of 1,000 or more head for the rest of the United States.

Estimating Procedures: These cattle on feed estimates were prepared by the Agricultural Statistics Board after reviewing recommendations and analysis submitted by each State office. Regional and State survey data were reviewed for reasonableness with each other and with estimates from the previous month when establishing the current estimates.

Revision Policy: Revisions to previous estimates are made to improve month to month relationships. Estimates for the previous month are subject to revision in all States each month when current estimates are made. In February, all monthly estimates for the previous year, and the number of feedlots and annual marketings from two years ago are reviewed and subject to revisions. The reviews are primarily based on slaughter data, state check-off or brand data, and any other data that may have been received after the original estimate was made. Estimates will also be reviewed after data from the Census of Agriculture are available. No revisions will be made after that date and estimates become final.

Reliability: Since all 1,000+ capacity cattle on feed operators in every State are not included in the monthly survey, survey estimates are subject to sampling variability. Survey results are also subject to non-sampling errors such as omissions, duplications, and mistakes in reporting, recording, and processing the data. The effects of these errors cannot be measured directly. They are minimized through rigid quality controls in the data collection process and through a careful review of all reported data for consistency and reasonableness.

To assist users in evaluating the reliability of estimates in this report, the "**Root Mean Square Error**" is shown for selected items in the table on the following page. The "Root Mean Square Error" is a statistical measure based on past performance and is computed using the differences between first and latest estimates. The "Root Mean Square Error" for cattle on feed inventory estimates over the past 24 months is 0.1 percent. This means that chances are 2 out of 3 that the final estimate will not be above or below the current estimate of 10.6 million head by more than 0.1 percent. Chances are 9 out of 10 that the difference will not exceed 0.2 percent.

The table on the following page shows a 24 month record of the range of differences between first and latest estimates for selected items. Using estimates of number on feed as an example, changes between the first estimate and the latest estimate during the past 24 months have averaged 9,000 head, ranging from 0 to 34,000 head. During this period the initial estimate has been above the latest estimate 9 times and has been below the latest estimate 7 times. This does not imply that the initial estimate is likely to understate or overstate final inventory.

Reliability of Monthly Cattle on Feed Estimates

[Based on data for the past 24 months]

Item	Root mean square error	90 percent confidence level	Difference between first and latest estimate				
			Average	Smallest	Largest	Months	
						Below latest	Above latest
	(percent)	(percent)	(1,000)	(1,000)	(1,000)	(number)	(number)
Number on feed	0.1	0.2	9	0	34	7	9
Placements	1.6	2.8	16	0	88	4	13
Marketings	1.3	2.3	14	0	67	1	12

Information Contacts

Listed below are the commodity specialists in the Livestock Branch of the National Agricultural Statistics Service to contact for additional information. E-mail inquiries may be sent to nass@nass.usda.gov

Dan Kerestes, Chief, Livestock Branch	(202) 720-3570
Scott Hollis, Head, Livestock Section	(202) 690-2424
Travis Averill – Cattle, Cattle on Feed	(202) 720-3040
Doug Bounds – Hogs and Pigs	(202) 720-3106
Alissa Cowell-Mytar – Sheep and Goats.....	(202) 720-4751
Donnie Fike – Dairy Products	(202) 690-3236
Tiffany Hora – Livestock Slaughter	(515) 284-4340
Mike Miller – Milk Production and Milk Cows	(202) 720-3278

Access to NASS Reports

For your convenience, you may access NASS reports and products the following ways:

- All reports are available electronically, at no cost, on the NASS web site: <http://www.nass.usda.gov>
- Both national and state specific reports are available via a free e-mail subscription. To set-up this free subscription, visit <http://www.nass.usda.gov> and in the “Follow NASS” box under “Receive reports by Email,” click on “National” or “State” to select the reports you would like to receive.

For more information on NASS surveys and reports, call the NASS Agricultural Statistics Hotline at (800) 727-9540, 7:30 a.m. to 4:00 p.m. ET, or e-mail: nass@nass.usda.gov.

The U.S. Department of Agriculture (USDA) prohibits discrimination against its customers, employees, and applicants for employment on the bases of race, color, national origin, age, disability, sex, gender identity, religion, reprisal, and where applicable, political beliefs, marital status, familial or parental status, sexual orientation, or all or part of an individual's income is derived from any public assistance program, or protected genetic information in employment or in any program or activity conducted or funded by the Department. (Not all prohibited bases will apply to all programs and/or employment activities.)

If you wish to file a Civil Rights program complaint of discrimination, complete the [USDA Program Discrimination Complaint Form](#) (PDF), found online at http://www.ascr.usda.gov/complaint_filing_cust.html, or at any USDA office, or call (866) 632-9992 to request the form. You may also write a letter containing all of the information requested in the form. Send your completed complaint form or letter to us by mail at U.S. Department of Agriculture, Director, Office of Adjudication, 1400 Independence Avenue, S.W., Washington, D.C. 20250-9410, by fax (202) 690-7442 or email at program.intake@usda.gov.