



Cattle on Feed

ISSN: 1948-9080

Released August 22, 2014, by the National Agricultural Statistics Service (NASS), Agricultural Statistics Board, United States Department of Agriculture (USDA).

United States Cattle on Feed Down 2 Percent

Cattle and calves on feed for slaughter market in the United States for feedlots with capacity of 1,000 or more head totaled 9.8 million head on August 1, 2014. The inventory was 2 percent below August 1, 2013.

Placements in feedlots during July totaled 1.56 million, 7 percent below 2013. Net placements were 1.50 million head. During July, placements of cattle and calves weighing less than 600 pounds were 425,000, 600-699 pounds were 260,000, 700-799 pounds were 355,000, and 800 pounds and greater were 520,000. For the month of July placements are the lowest since the series began in 1996.

Marketings of fed cattle during July totaled 1.79 million, 9 percent below 2013. July marketings are the lowest since the series began in 1996.

Other disappearance totaled 63,000 during July, 2 percent below 2013.

Number of Cattle on Feed, Placements, Marketings, and Other Disappearance on 1,000+ Capacity Feedlots – United States: August 1, 2013 and 2014

Item	Number		Percent of previous year
	2013	2014	
	(1,000 head)	(1,000 head)	(percent)
On feed July 1	10,375	10,127	98
Placed on feed during July	1,684	1,560	93
Fed cattle marketed during July	1,970	1,787	91
Other disappearance during July	64	63	98
On feed August 1	10,025	9,837	98

Number of Cattle on Feed, Placements, Marketings, and Other Disappearance on 1,000+ Capacity Feedlots – United States: July 1, 2013 and 2014

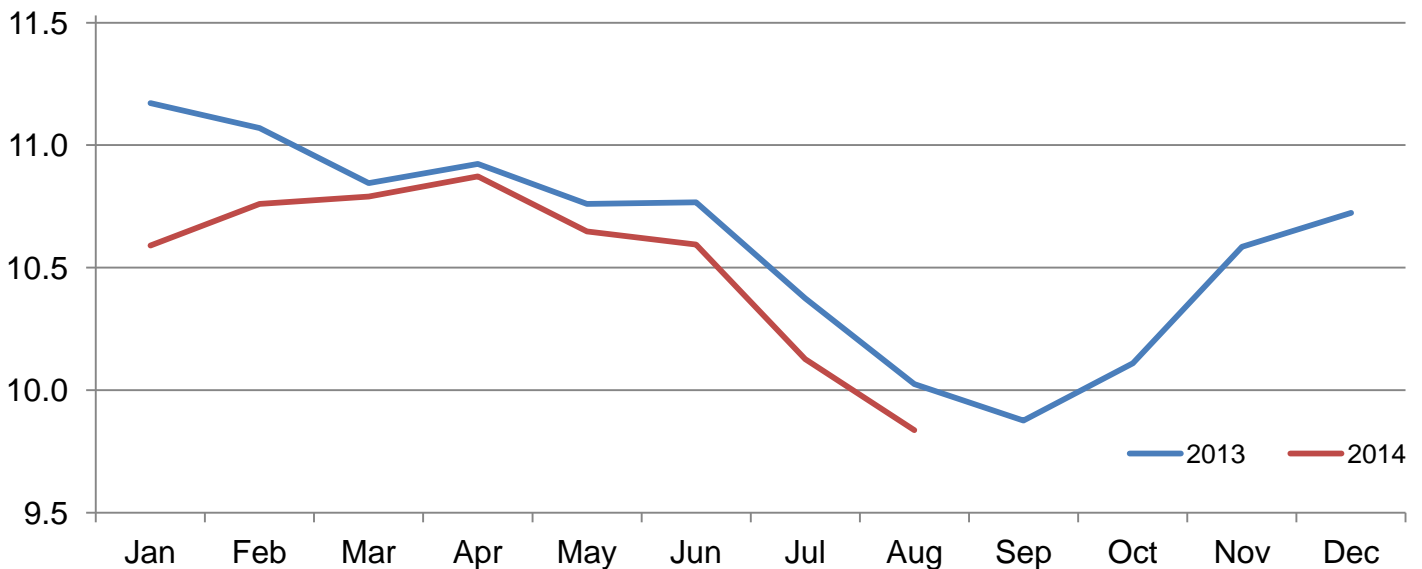
Item	Number		Percent of previous year
	2013	2014	
	(1,000 head)	(1,000 head)	(percent)
On feed June 1	10,767	10,594	98
Placed on feed during June	1,551	1,455	94
Fed cattle marketed during June	1,880	1,847	98
Other disappearance during June	63	75	119
On feed July 1	10,375	10,127	98

Number of Cattle on Feed on 1,000+ Capacity Feedlots by Month – States and United States: 2013 and 2014

State	August 1, 2013	July 1, 2014	August 1, 2014		
			Number	Percent of previous year	Percent of previous month
	(1,000 head)	(1,000 head)	(1,000 head)	(percent)	(percent)
Arizona	262	272	262	100	96
California	515	435	420	82	97
Colorado	870	870	810	93	93
Idaho	185	190	185	100	97
Iowa	560	620	600	107	97
Kansas	2,000	1,900	1,900	95	100
Minnesota	109	122	116	106	95
Nebraska	2,080	2,260	2,160	104	96
Oklahoma	285	255	240	84	94
South Dakota	180	210	190	106	90
Texas	2,490	2,490	2,470	99	99
Washington	189	193	189	100	98
Other States	300	310	295	98	95
United States	10,025	10,127	9,837	98	97

Cattle on Feed Inventory on 1,000+ Capacity Feedlots – United States

Million head

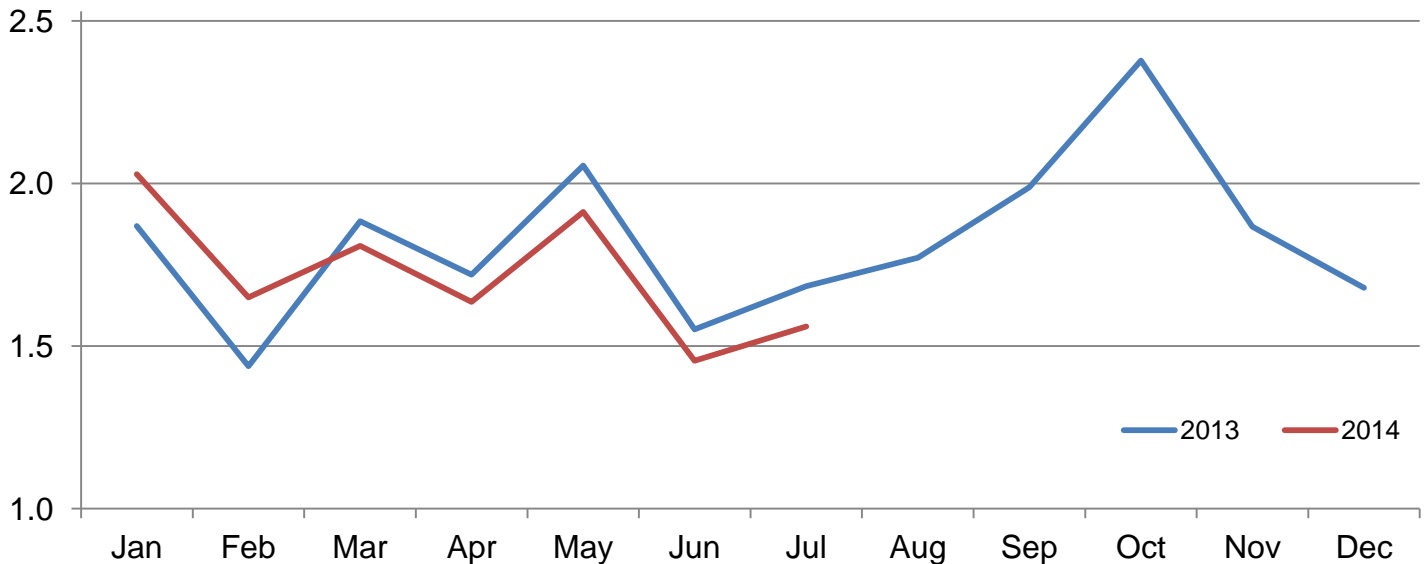


Number of Cattle Placed on Feed on 1,000+ Capacity Feedlots by Month – States and United States: 2013 and 2014

State	During July 2013 (1,000 head)	During June 2014 (1,000 head)	During July 2014		
			Number (1,000 head)	Percent of previous year (percent)	Percent of previous month (percent)
Arizona	23	20	23	100	115
California	57	45	39	68	87
Colorado	120	95	90	75	95
Idaho	39	26	37	95	142
Iowa	48	54	56	117	104
Kansas	425	315	400	94	127
Minnesota	9	15	10	111	67
Nebraska	370	375	375	101	100
Oklahoma	45	37	32	71	86
South Dakota	19	31	20	105	65
Texas	450	370	410	91	111
Washington	41	37	37	90	100
Other States	38	35	31	82	89
United States	1,684	1,455	1,560	93	107

Number of Cattle Placed on 1,000+ Capacity Feedlots – United States

Million head



Number of Cattle Placed on Feed by Weight Group on 1,000+ Capacity Feedlots by Month – States and United States: 2013 and 2014

State	During July									
	Under 600 lbs		600-699 lbs		700-799 lbs		800+ lbs		Total	
	2013	2014	2013	2014	2013	2014	2013	2014	2013	2014
	(1,000 head)	(1,000 head)	(1,000 head)	(1,000 head)	(1,000 head)	(1,000 head)	(1,000 head)	(1,000 head)	(1,000 head)	(1,000 head)
Colorado	30	25	20	15	30	20	40	30	120	90
Kansas	60	80	75	70	140	110	150	140	425	400
Nebraska	45	55	55	50	90	85	180	185	370	375
Texas	165	185	75	85	125	85	85	55	450	410
Other States	90	80	45	40	60	55	124	110	319	285
United States	390	425	270	260	445	355	579	520	1,684	1,560

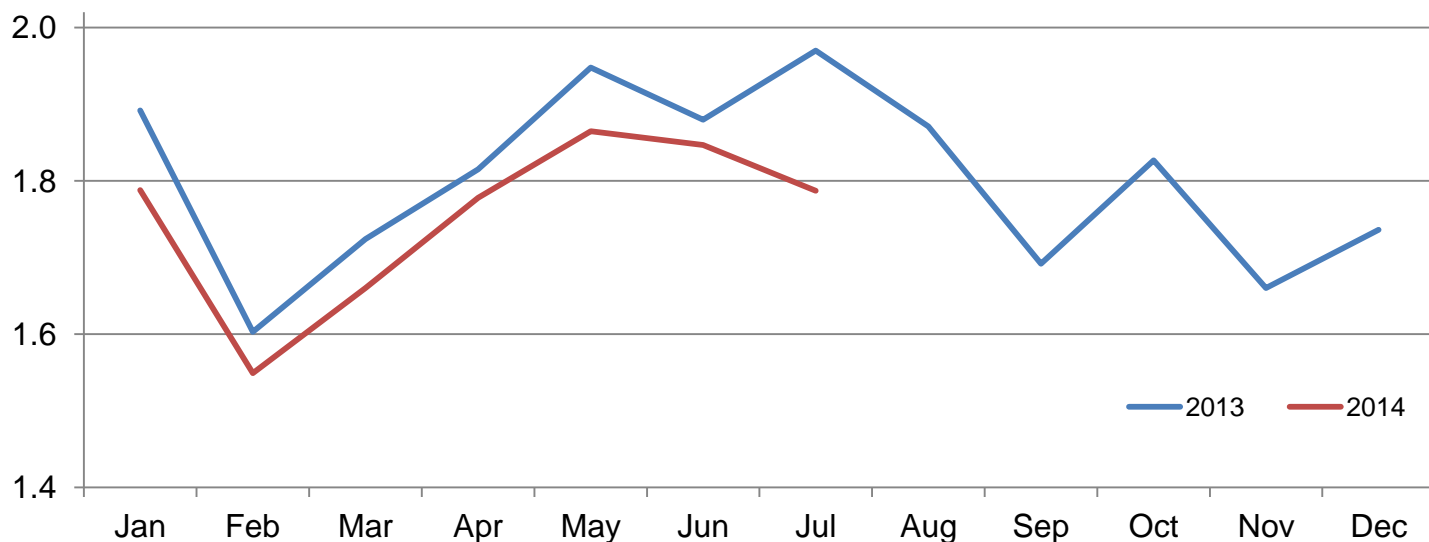
State	During June									
	Under 600 lbs		600-699 lbs		700-799 lbs		800+ lbs		Total	
	2013	2014	2013	2014	2013	2014	2013	2014	2013	2014
	(1,000 head)	(1,000 head)	(1,000 head)	(1,000 head)	(1,000 head)	(1,000 head)	(1,000 head)	(1,000 head)	(1,000 head)	(1,000 head)
Colorado	30	30	15	15	30	20	40	30	115	95
Kansas	50	65	55	60	100	80	145	110	350	315
Nebraska	30	55	45	50	80	80	175	190	330	375
Texas	125	155	75	75	135	85	90	55	425	370
Other States	80	95	36	45	65	55	150	105	331	300
United States	315	400	226	245	410	320	600	490	1,551	1,455

Number of Cattle Marketed on 1,000+ Capacity Feedlots by Month – States and United States: 2013 and 2014

State	During July 2013	During June 2014	During July 2014		
			Number	Percent of previous year	Percent of previous month
	(1,000 head)	(1,000 head)	(1,000 head)	(percent)	(percent)
Arizona	27	22	26	96	118
California	55	40	47	85	118
Colorado	165	150	145	88	97
Idaho	48	39	41	85	105
Iowa	64	70	74	116	106
Kansas	430	420	390	91	93
Minnesota	24	15	15	63	100
Nebraska	450	500	465	103	93
Oklahoma	64	46	46	72	100
South Dakota	37	45	39	105	87
Texas	510	420	415	81	99
Washington	54	44	40	74	91
Other States	42	36	44	105	122
United States	1,970	1,847	1,787	91	97

Number of Cattle Marketed on 1,000+ Capacity Feedlots – United States

Million head



Other Disappearance on 1,000+ Capacity Feedlots by Month – States and United States: 2013 and 2014

State	During July 2013 (1,000 head)	During June 2014 (1,000 head)	During July 2014		
			Number (1,000 head)	Percent of previous year (percent)	Percent of previous month (percent)
Arizona	1	1	7	700	700
California	2	5	7	350	140
Colorado	5	5	5	100	100
Idaho	1	2	1	100	50
Iowa	4	4	2	50	50
Kansas	15	15	10	67	67
Minnesota	1	1	1	100	100
Nebraska	20	25	10	50	40
Oklahoma	1	1	1	100	100
South Dakota	2	1	1	50	100
Texas	10	10	15	150	150
Washington	1	1	1	100	100
Other States	1	4	2	200	50
United States	64	75	63	98	84

Terms and Definitions of Cattle on Feed Estimates

Cattle on feed are animals being fed a ration of grain, silage, hay and/or protein supplement for slaughter market that are expected to produce a carcass that will grade select or better. It excludes cattle being "backgrounded only" for later sale as feeders or later placement in another feedlot.

Placements are cattle put into a feedlot, fed a ration which will produce a carcass that will grade select or better, and are intended for the slaughter market.

Marketings are cattle shipped out of feedlots to a slaughter market.

Other disappearance includes death loss, movement from feedlots to pasture, and shipments to other feedlots for further feeding.

Reliability of Cattle on Feed Estimates

Survey Procedures: During January and July all known feedlots in the United States with capacity of 1,000 or more head are surveyed to provide data for cattle on feed estimates. During the other months, all known feedlots from 16 States are surveyed. The 16 States account for approximately 98 percent of the cattle on feed in feedlots with capacity of 1,000 or more head. Individual State estimates are published monthly for 12 of the 16 States. Data collected from the remaining 4 States are used to establish the "Other States" estimates. These 4 States include Illinois, New Mexico, Oregon, and Wyoming. The "Other States" category represents all cattle on feed with a capacity of 1,000 or more head for the rest of the United States.

Estimating Procedures: These cattle on feed estimates were prepared by the Agricultural Statistics Board after reviewing recommendations and analysis submitted by each State office. Regional and State survey data were reviewed for reasonableness with each other and with estimates from the previous month when establishing the current estimates.

Revision Policy: Revisions to previous estimates are made to improve month to month relationships. Estimates for the previous month are subject to revision in all States each month when current estimates are made. In February, all monthly estimates for the previous year, and the number of feedlots and annual marketings from two years ago are reviewed and subject to revisions. The reviews are primarily based on slaughter data, state check-off or brand data, and any other data that may have been received after the original estimate was made. Estimates will also be reviewed after data from the Census of Agriculture are available. No revisions will be made after that date and estimates become final.

Reliability: Since all 1,000+ capacity cattle on feed operators in every State are not included in the monthly survey, survey estimates are subject to sampling variability. Survey results are also subject to non-sampling errors such as omissions, duplications, and mistakes in reporting, recording, and processing the data. The effects of these errors cannot be measured directly. They are minimized through rigid quality controls in the data collection process and through a careful review of all reported data for consistency and reasonableness.

To assist users in evaluating the reliability of estimates in this report, the "**Root Mean Square Error**" is shown for selected items in the table on the following page. The "Root Mean Square Error" is a statistical measure based on past performance and is computed using the differences between first and latest estimates. The "Root Mean Square Error" for cattle on feed inventory estimates over the past 24 months is 0.1 percent. This means that chances are 2 out of 3 that the final estimate will not be above or below the current estimate of 9.8 million head by more than 0.1 percent. Chances are 9 out of 10 that the difference will not exceed 0.2 percent.

The table on the following page shows a 24 month record of the range of differences between first and latest estimates for selected items. Using estimates of number on feed as an example, changes between the first estimate and the latest estimate during the past 24 months have averaged 9,000 head, ranging from 0 to 34,000 head. During this period the initial estimate has been above the latest estimate 8 times and has been below the latest estimate 7 times. This does not imply that the initial estimate is likely to understate or overstate final inventory.

Reliability of Monthly Cattle on Feed Estimates

[Based on data for the past 24 months]

Item	Root mean square error	90 percent confidence level	Difference between first and latest estimate				
			Average	Smallest	Largest	Months	
						Below latest	Above latest
	(percent)	(percent)	(1,000)	(1,000)	(1,000)	(number)	(number)
Number on feed	0.1	0.2	9	0	34	7	8
Placements	1.6	2.8	16	0	88	4	12
Marketings	1.3	2.3	14	0	67	0	12

Information Contacts

Listed below are the commodity specialists in the Livestock Branch of the National Agricultural Statistics Service to contact for additional information. E-mail inquiries may be sent to nass@nass.usda.gov.

Dan Kerestes, Chief, Livestock Branch	(202) 720-3570
Scott Hollis, Head, Livestock Section	(202) 690-2424
Travis Averill – Cattle, Cattle on Feed	(202) 720-3040
Doug Bounds – Hogs and Pigs	(202) 720-3106
Donnie Fike – Dairy Products	(202) 690-3236
Tiffany Hora – Livestock Slaughter	(515) 284-4340
Mike Miller – Milk Production and Milk Cows	(202) 720-3278
Vacant – Sheep and Goats	(202) 720-3570

Access to NASS Reports

For your convenience, you may access NASS reports and products the following ways:

- All reports are available electronically, at no cost, on the NASS web site: <http://www.nass.usda.gov>
- Both national and state specific reports are available via a free e-mail subscription. To set-up this free subscription, visit <http://www.nass.usda.gov> and in the “Follow NASS” box under “Receive reports by Email,” click on “National” or “State” to select the reports you would like to receive.

For more information on NASS surveys and reports, call the NASS Agricultural Statistics Hotline at (800) 727-9540, 7:30 a.m. to 4:00 p.m. ET, or e-mail: nass@nass.usda.gov.

The U.S. Department of Agriculture (USDA) prohibits discrimination against its customers, employees, and applicants for employment on the basis of race, color, national origin, age, disability, sex, gender identity, religion, reprisal, and where applicable, political beliefs, marital status, familial or parental status, sexual orientation, or all or part of an individual's income is derived from any public assistance program, or protected genetic information in employment or in any program or activity conducted or funded by the Department. (Not all prohibited bases will apply to all programs and/or employment activities.)

If you wish to file a Civil Rights program complaint of discrimination, complete the [USDA Program Discrimination Complaint Form](#) (PDF), found online at http://www.ascr.usda.gov/complaint_filing_cust.html, or at any USDA office, or call (866) 632-9992 to request the form. You may also write a letter containing all of the information requested in the form. Send your completed complaint form or letter to us by mail at U.S. Department of Agriculture, Director, Office of Adjudication, 1400 Independence Avenue, S.W., Washington, D.C. 20250-9410, by fax (202) 690-7442 or email at program.intake@usda.gov.