



Released October 24, 2014, by the National Agricultural Statistics Service (NASS), Agricultural Statistics Board, United States Department of Agriculture (USDA).

United States Cattle on Feed Down 1 Percent

Cattle and calves on feed for slaughter market in the United States for feedlots with capacity of 1,000 or more head totaled 10.1 million head on October 1, 2014. The inventory was 1 percent below October 1, 2013. The inventory included 6.46 million steers and steer calves, up 1 percent from the previous year. This group accounted for 64 percent of the total inventory. Heifers and heifer calves accounted for 3.55 million head, down 3 percent from 2013.

Placements in feedlots during September totaled 2.01 million, 1 percent above 2013. Net placements were 1.94 million head. During September, placements of cattle and calves weighing less than 600 pounds were 460,000, 600-699 pounds were 340,000, 700-799 pounds were 437,000, and 800 pounds and greater were 770,000. For the month of September, placements are the second lowest since the series began in 1996.

Marketings of fed cattle during September totaled 1.68 million, 1 percent below 2013.

Other disappearance totaled 65,000 during September, 5 percent above 2013.

Number of Cattle on Feed, Placements, Marketings, and Other Disappearance on 1,000+ Capacity Feedlots – United States: October 1, 2013 and 2014

Item	Number		Percent of previous year
	2013	2014	
	(1,000 head)	(1,000 head)	(percent)
On feed September 1	9,876	9,799	99
Placed on feed during September	1,988	2,007	101
Fed cattle marketed during September	1,692	1,683	99
Other disappearance during September	62	65	105
On feed October 1	10,110	10,058	99

Number of Cattle on Feed, Placements, Marketings, and Other Disappearance on 1,000+ Capacity Feedlots – United States: September 1, 2013 and 2014

Item	Number		Percent of previous year
	2013	2014	
	(1,000 head)	(1,000 head)	(percent)
On feed August 1	10,025	9,837	98
Placed on feed during August	1,772	1,720	97
Fed cattle marketed during August	1,871	1,692	90
Other disappearance during August	50	66	132
On feed September 1	9,876	9,799	99

Number on Feed by Class on 1,000+ Capacity Feedlots – United States: October 1, 2013 and 2014

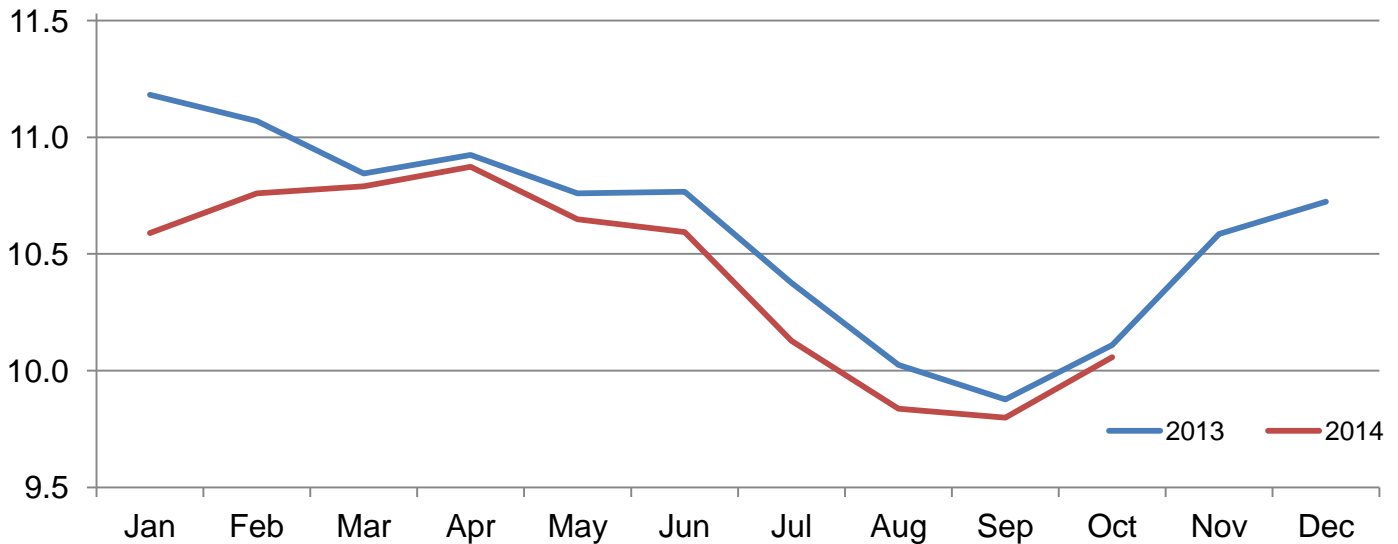
Item	Number		Percent of previous year
	2013	2014	
	(1,000 Head)	(1,000 Head)	(percent)
Class on Feed October 1			
Steers and Steer Calves	6,411	6,460	101
Heifers and Heifer Calves	3,659	3,547	97
Cows and Bulls	40	51	128

Number of Cattle on Feed on 1,000+ Capacity Feedlots by Month – States and United States: 2013 and 2014

State	October 1, 2013	September 1, 2014	October 1, 2014		
			Number	Percent of previous year	Percent of previous month
	(1,000 head)	(1,000 head)	(1,000 head)	(percent)	(percent)
Arizona	268	257	252	94	98
California	495	415	415	84	100
Colorado	870	800	840	97	105
Idaho	210	180	205	98	114
Iowa	550	580	560	102	97
Kansas	2,000	1,950	2,010	101	103
Minnesota	103	113	114	111	101
Nebraska	2,200	2,130	2,240	102	105
Oklahoma	285	245	245	86	100
South Dakota	180	185	190	106	103
Texas	2,450	2,450	2,470	101	101
Washington	184	199	212	115	107
Other States	315	295	305	97	103
United States	10,110	9,799	10,058	99	103

Cattle on Feed Inventory on 1,000+ Capacity Feedlots – United States

Million head

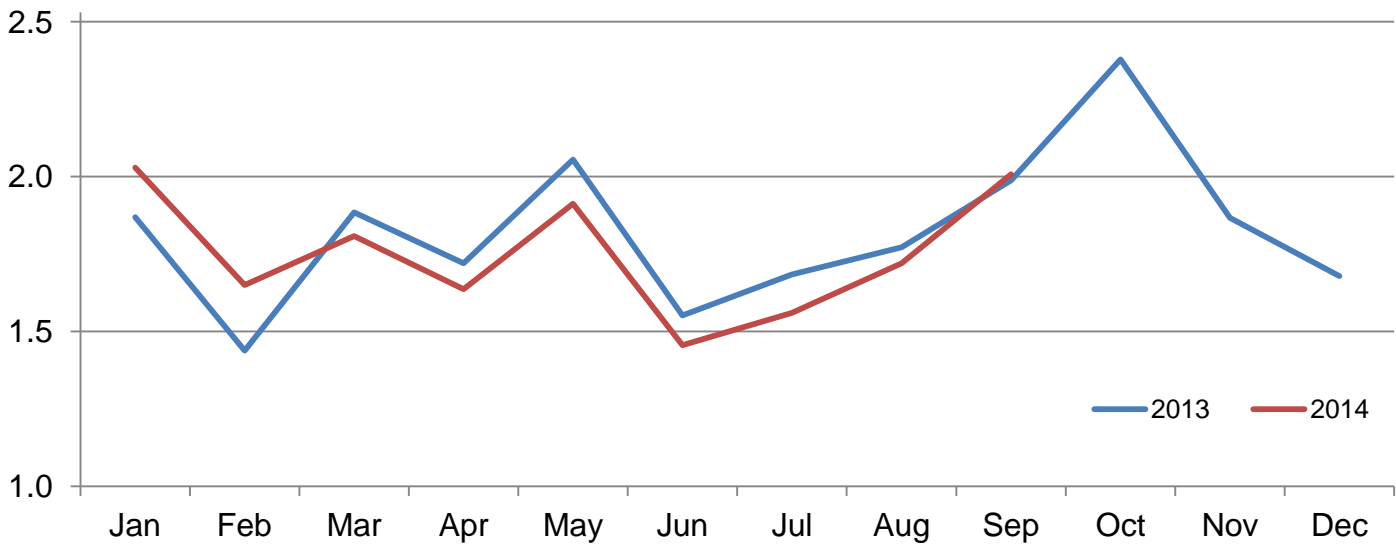


Number of Cattle Placed on Feed on 1,000+ Capacity Feedlots by Month – States and United States: 2013 and 2014

State	During September 2013 (1,000 head)	During August 2014 (1,000 head)	During September 2014		
			Number (1,000 head)	Percent of previous year (percent)	Percent of previous month (percent)
Arizona	23	21	20	87	95
California	45	40	43	96	108
Colorado	190	145	200	105	138
Idaho	62	33	64	103	194
Iowa	89	63	99	111	157
Kansas	390	410	400	103	98
Minnesota	17	15	20	118	133
Nebraska	510	425	520	102	122
Oklahoma	67	50	55	82	110
South Dakota	43	30	50	116	167
Texas	470	410	445	95	109
Washington	37	44	46	124	105
Other States	45	34	45	100	132
United States	1,988	1,720	2,007	101	117

Number of Cattle Placed on 1000+ Capacity Feedlots – United States

Million head



Number of Cattle Placed on Feed by Weight Group on 1,000+ Capacity Feedlots by Month – States and United States: 2013 and 2014

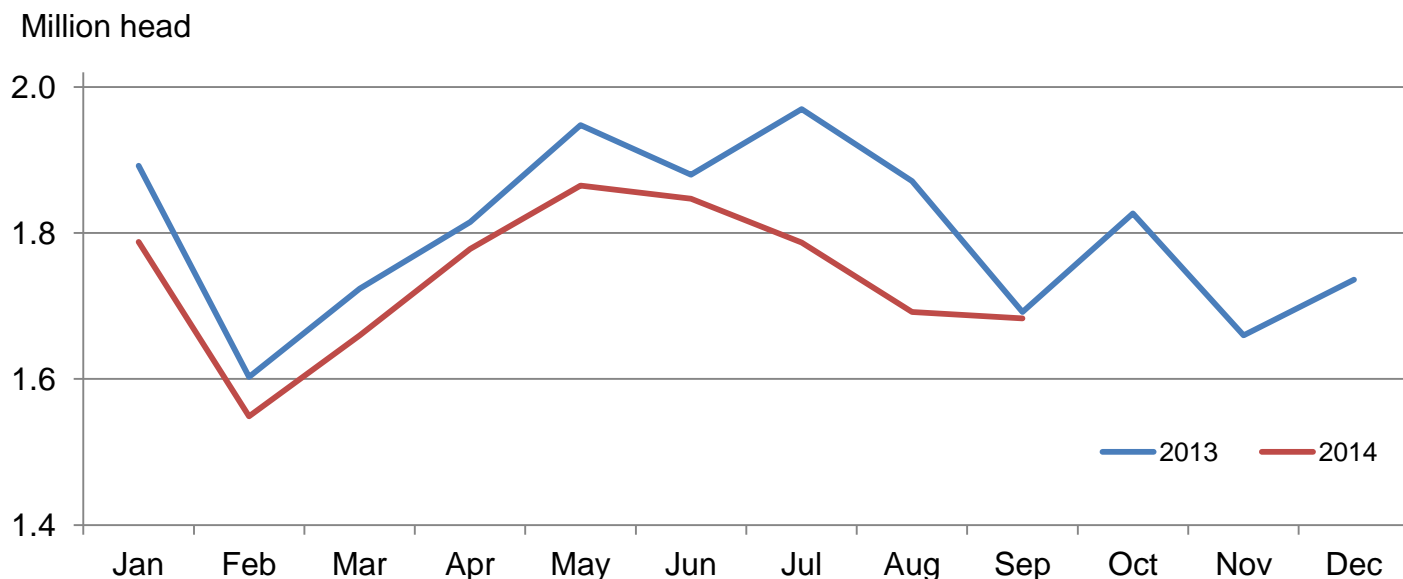
State	During September									
	Under 600 lbs		600-699 lbs		700-799 lbs		800+ lbs		Total	
	2013	2014	2013	2014	2013	2014	2013	2014	2013	2014
	(1,000 head)	(1,000 head)	(1,000 head)	(1,000 head)	(1,000 head)	(1,000 head)	(1,000 head)	(1,000 head)	(1,000 head)	(1,000 head)
Colorado	35	35	20	20	50	45	85	100	190	200
Kansas	70	70	85	80	120	115	115	135	390	400
Nebraska	75	75	70	65	105	95	260	285	510	520
Texas	180	170	110	115	110	100	70	60	470	445
Other States	105	110	50	60	90	82	183	190	428	442
United States	465	460	335	340	475	437	713	770	1,988	2,007

State	During August									
	Under 600 lbs		600-699 lbs		700-799 lbs		800+ lbs		Total	
	2013	2014	2013	2014	2013	2014	2013	2014	2013	2014
	(1,000 head)	(1,000 head)	(1,000 head)	(1,000 head)	(1,000 head)	(1,000 head)	(1,000 head)	(1,000 head)	(1,000 head)	(1,000 head)
Colorado	25	30	20	15	45	35	55	65	145	145
Kansas	65	75	80	80	115	110	120	145	380	410
Nebraska	55	55	65	50	100	95	220	225	440	425
Texas	175	170	115	95	95	85	55	60	440	410
Other States	85	80	47	40	70	70	165	140	367	330
United States	405	410	327	280	425	395	615	635	1,772	1,720

Number of Cattle Marketed on 1,000+ Capacity Feedlots by Month – States and United States: 2013 and 2014

State	During September 2013	During August 2014	During September 2014		
			Number	Percent of previous year	Percent of previous month
			(1,000 head)	(percent)	(percent)
Arizona	20	25	24	120	96
California	53	40	38	72	95
Colorado	145	150	155	107	103
Idaho	41	37	38	93	103
Iowa	87	80	114	131	143
Kansas	355	345	325	92	94
Minnesota	14	17	18	129	106
Nebraska	390	440	400	103	91
Oklahoma	60	44	54	90	123
South Dakota	32	34	42	131	124
Texas	430	415	410	95	99
Washington	36	33	32	89	97
Other States	29	32	33	114	103
United States	1,692	1,692	1,683	99	99

Number of Cattle Marketed on 1,000+ Capacity Feedlots – United States



Other Disappearance on 1,000+ Capacity Feedlots by Month – States and United States: 2013 and 2014

State	During September 2013 (1,000 head)	During August 2014 (1,000 head)	During September 2014		
			Number (1,000 head)	Percent of previous year (percent)	Percent of previous month (percent)
Arizona	1	1	1	100	100
California	2	5	5	250	100
Colorado	5	5	5	100	100
Idaho	1	1	1	100	100
Iowa	2	3	5	250	167
Kansas	15	15	15	100	100
Minnesota	1	1	1	100	100
Nebraska	10	15	10	100	67
Oklahoma	2	1	1	50	100
South Dakota	1	1	3	300	300
Texas	20	15	15	75	100
Washington	1	1	1	100	100
Other States	1	2	2	200	100
United States	62	66	65	105	98

Number on Feed by Class on 1,000+ Capacity Feedlots by Quarter – States and United States: 2013 and 2014

State	Steers and steer calves			Heifers and heifer calves			Cows and bulls		
	Oct 1, 2013	Jul 1, 2014	Oct 1, 2014	Oct 1, 2013	Jul 1, 2014	Oct 1, 2014	Oct 1, 2013	Jul 1, 2014	Oct 1, 2014
	(1,000 Head)	(1,000 Head)	(1,000 Head)	(1,000 Head)	(1,000 Head)	(1,000 Head)	(1,000 Head)	(1,000 Head)	(1,000 Head)
Arizona	261	268	249	7	4	3	0	0	0
California	450	390	365	44	42	50	1	3	0
Colorado	560	560	530	305	305	305	5	5	5
Idaho	115	101	112	90	88	88	5	1	5
Iowa	350	430	430	200	190	130	0	0	0
Kansas	1,060	970	1,050	935	925	955	5	5	5
Minnesota	92	95	96	10	26	17	1	1	1
Nebraska	1,380	1,470	1,450	810	765	765	10	25	25
Oklahoma	190	170	165	95	85	80	0	0	0
South Dakota	104	113	104	67	80	78	9	17	8
Texas	1,530	1,580	1,590	919	909	879	1	1	1
Washington	109	107	119	72	85	92	3	1	1
Other States	210	210	200	105	99	105	0	1	0
United States	6,411	6,464	6,460	3,659	3,603	3,547	40	60	51

Terms and Definitions of Cattle on Feed Estimates

Cattle on feed are animals being fed a ration of grain, silage, hay and/or protein supplement for slaughter market that are expected to produce a carcass that will grade select or better. It excludes cattle being "backgrounded only" for later sale as feeders or later placement in another feedlot.

Placements are cattle put into a feedlot, fed a ration which will produce a carcass that will grade select or better, and are intended for the slaughter market.

Marketings are cattle shipped out of feedlots to a slaughter market.

Other disappearance includes death loss, movement from feedlots to pasture, and shipments to other feedlots for further feeding.

Reliability of Cattle on Feed Estimates

Survey Procedures: During January and July all known feedlots in the United States with capacity of 1,000 or more head are surveyed to provide data for cattle on feed estimates. During the other months, all known feedlots from 16 States are surveyed. The 16 States account for approximately 98 percent of the cattle on feed in feedlots with capacity of 1,000 or more head. Individual State estimates are published monthly for 12 of the 16 States. Data collected from the remaining 4 States are used to establish the "Other States" estimates. These 4 States include Illinois, New Mexico, Oregon, and Wyoming. The "Other States" category represents all cattle on feed with a capacity of 1,000 or more head for the rest of the United States.

Estimating Procedures: These cattle on feed estimates were prepared by the Agricultural Statistics Board after reviewing recommendations and analysis submitted by each State office. Regional and State survey data were reviewed for reasonableness with each other and with estimates from the previous month when establishing the current estimates.

Revision Policy: Revisions to previous estimates are made to improve month to month relationships. Estimates for the previous month are subject to revision in all States each month when current estimates are made. In February, all monthly estimates for the previous year, and the number of feedlots and annual marketings from two years ago are reviewed and subject to revisions. The reviews are primarily based on slaughter data, state check-off or brand data, and any other data that may have been received after the original estimate was made. Estimates will also be reviewed after data from the Census of Agriculture are available. No revisions will be made after that date and estimates become final.

Reliability: Since all 1,000+ capacity cattle on feed operators in every State are not included in the monthly survey, survey estimates are subject to sampling variability. Survey results are also subject to non-sampling errors such as omissions, duplications, and mistakes in reporting, recording, and processing the data. The effects of these errors cannot be measured directly. They are minimized through rigid quality controls in the data collection process and through a careful review of all reported data for consistency and reasonableness.

To assist users in evaluating the reliability of estimates in this report, the "**Root Mean Square Error**" is shown for selected items in the table on the following page. The "Root Mean Square Error" is a statistical measure based on past performance and is computed using the differences between first and latest estimates. The "Root Mean Square Error" for cattle on feed inventory estimates over the past 24 months is 0.1 percent. This means that chances are 2 out of 3 that the final estimate will not be above or below the current estimate of 10.1 million head by more than 0.1 percent. Chances are 9 out of 10 that the difference will not exceed 0.2 percent.

The table on the following page shows a 24 month record of the range of differences between first and latest estimates for selected items. Using estimates of number on feed as an example, changes between the first estimate and the latest estimate during the past 24 months have averaged 9,000 head, ranging from 0 to 34,000 head. During this period the initial estimate has been above the latest estimate 8 times and has been below the latest estimate 8 times. This does not imply that the initial estimate is likely to understate or overstate final inventory.

Reliability of Monthly Cattle on Feed Estimates

[Based on data for the past 24 months]

Item	Root mean square error	90 percent confidence level	Difference between first and latest estimate				
			Average	Smallest	Largest	Months	
						Below latest	Above latest
	(percent)	(percent)	(1,000)	(1,000)	(1,000)	(number)	(number)
Number on feed	0.1	0.2	9	0	34	8	8
Placements	1.7	2.9	18	0	88	3	14
Marketings	1.5	2.5	17	0	67	0	13

Information Contacts

Listed below are the commodity specialists in the Livestock Branch of the National Agricultural Statistics Service to contact for additional information. E-mail inquiries may be sent to nass@nass.usda.gov.

Dan Kerestes, Chief, Livestock Branch	(202) 720-3570
Scott Hollis, Head, Livestock Section	(202) 690-2424
Travis Averill – Cattle, Cattle on Feed	(202) 720-3040
Sherry Bertramsen – Livestock Slaughter	(202) 720-3240
Doug Bounds – Hogs and Pigs	(202) 720-3106
Donnie Fike – Dairy Products	(202) 690-3236
Mike Miller – Milk Production and Milk Cows	(202) 720-3278
Evan Schulz – Sheep and Goats	(202) 720-6147

Access to NASS Reports

For your convenience, you may access NASS reports and products the following ways:

- All reports are available electronically, at no cost, on the NASS web site: <http://www.nass.usda.gov>
- Both national and state specific reports are available via a free e-mail subscription. To set-up this free subscription, visit <http://www.nass.usda.gov> and in the “Follow NASS” box under “Receive reports by Email,” click on “National” or “State” to select the reports you would like to receive.

For more information on NASS surveys and reports, call the NASS Agricultural Statistics Hotline at (800) 727-9540, 7:30 a.m. to 4:00 p.m. ET, or e-mail: nass@nass.usda.gov.

The U.S. Department of Agriculture (USDA) prohibits discrimination against its customers, employees, and applicants for employment on the basis of race, color, national origin, age, disability, sex, gender identity, religion, reprisal, and where applicable, political beliefs, marital status, familial or parental status, sexual orientation, or all or part of an individual's income is derived from any public assistance program, or protected genetic information in employment or in any program or activity conducted or funded by the Department. (Not all prohibited bases will apply to all programs and/or employment activities.)

If you wish to file a Civil Rights program complaint of discrimination, complete the [USDA Program Discrimination Complaint Form](#) (PDF), found online at http://www.ascr.usda.gov/complaint_filing_cust.html, or at any USDA office, or call (866) 632-9992 to request the form. You may also write a letter containing all of the information requested in the form. Send your completed complaint form or letter to us by mail at U.S. Department of Agriculture, Director, Office of Adjudication, 1400 Independence Avenue, S.W., Washington, D.C. 20250-9410, by fax (202) 690-7442 or email at program.intake@usda.gov.