



# Cattle on Feed

ISSN: 1948-9080

---

Released September 18, 2015, by the National Agricultural Statistics Service (NASS), Agricultural Statistics Board, United States Department of Agriculture (USDA).

## United States Cattle on Feed Up 3 Percent

**Cattle and calves on feed** for the slaughter market in the United States for feedlots with capacity of 1,000 or more head totaled 9.99 million head on September 1, 2015. The inventory was 3 percent above September 1, 2014.

**Placements** in feedlots during August totaled 1.63 million head, 5 percent below 2014. Net placements were 1.57 million head. During August, placements of cattle and calves weighing less than 600 pounds were 395,000 head, 600-699 pounds were 215,000 head, 700-799 pounds were 362,000 head, and 800 pounds and greater were 660,000 head. Placements are the lowest for August since the series began in 1996.

**Marketings** of fed cattle during August totaled 1.59 million head, 6 percent below 2014. Marketings are the lowest for August since the series began in 1996.

**Other disappearance** totaled 60,000 head during August, 9 percent below 2014.

**Number of Cattle on Feed, Placements, Marketings, and Other Disappearance on 1,000+ Capacity Feedlots – United States: September 1, 2014 and 2015**

Item	Number		Percent of previous year
	2014	2015	
	(1,000 head)	(1,000 head)	(percent)
On feed August 1 .....	9,752	10,002	103
Placed on feed during August .....	1,725	1,632	95
Fed cattle marketed during August .....	1,692	1,588	94
Other disappearance during August .....	66	60	91
On feed September 1 .....	9,719	9,986	103

**Number of Cattle on Feed, Placements, Marketings, and Other Disappearance on 1,000+ Capacity Feedlots – United States: August 1, 2014 and 2015**

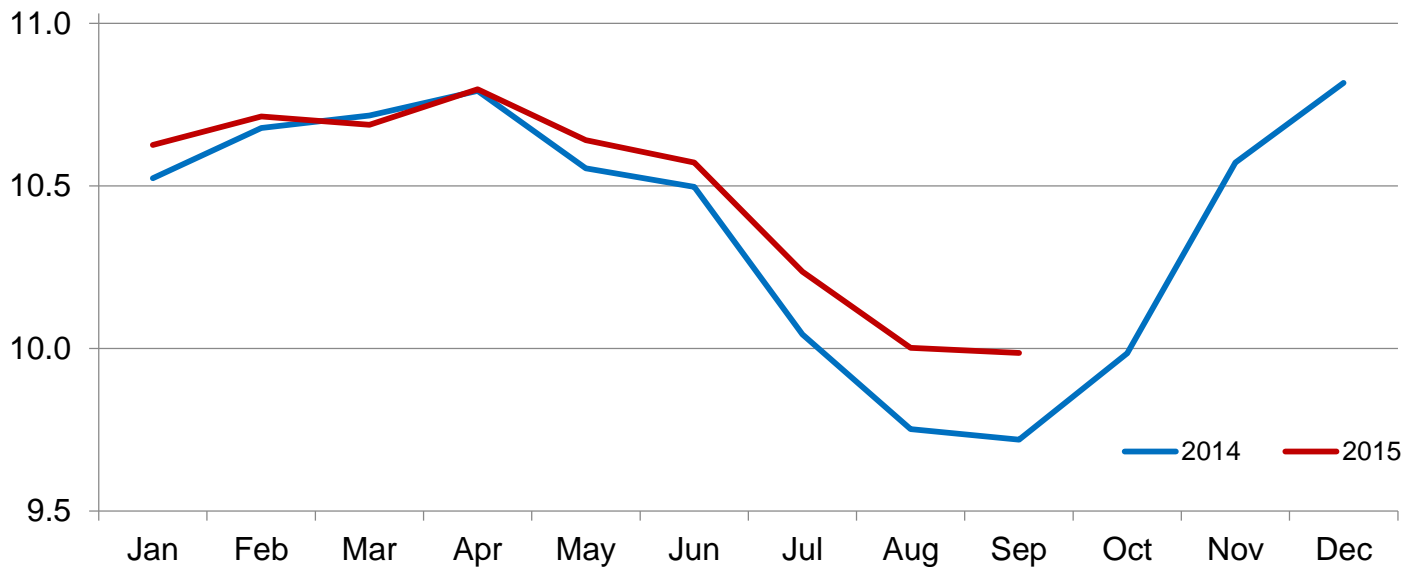
Item	Number		Percent of previous year
	2014	2015	
	(1,000 head)	(1,000 head)	(percent)
On feed July 1 .....	10,043	10,236	102
Placed on feed during July .....	1,559	1,547	99
Fed cattle marketed during July .....	1,787	1,725	97
Other disappearance during July .....	63	56	89
On feed August 1 .....	9,752	10,002	103

**Number of Cattle on Feed on 1,000+ Capacity Feedlots by Month – States and United States: 2014 and 2015**

State	September 1, 2014	August 1, 2015	September 1, 2015		
			Number	Percent of previous year	Percent of previous month
	(1,000 head)	(1,000 head)	(1,000 head)	(percent)	(percent)
Arizona .....	257	239	241	94	101
California .....	415	455	455	110	100
Colorado .....	780	790	780	100	99
Idaho .....	170	220	215	126	98
Iowa .....	580	630	620	107	98
Kansas .....	1,950	1,930	1,950	100	101
Minnesota .....	112	133	140	125	105
Nebraska .....	2,110	2,200	2,200	104	100
Oklahoma .....	245	250	250	102	100
South Dakota .....	175	210	205	117	98
Texas .....	2,450	2,440	2,450	100	100
Washington .....	180	210	195	108	93
Other States .....	295	295	285	97	97
United States .....	9,719	10,002	9,986	103	100

**Cattle on Feed Inventory on 1,000+ Capacity Feedlots – United States**

Million head

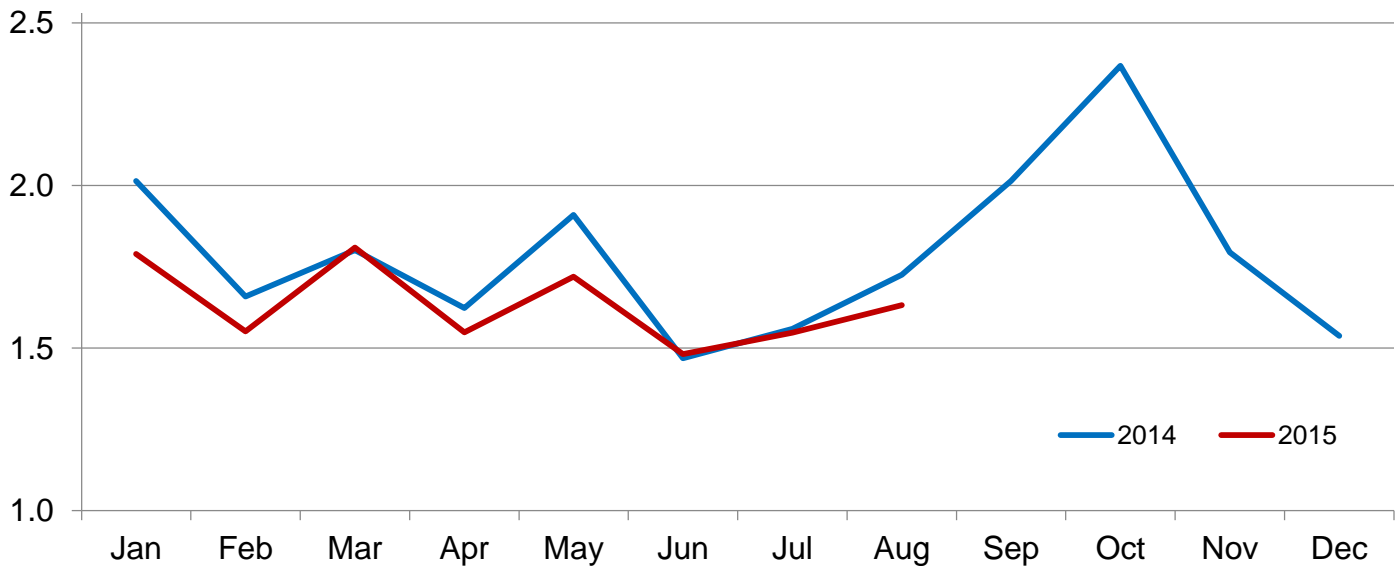


**Number of Cattle Placed on Feed on 1,000+ Capacity Feedlots by Month – States and United States: 2014 and 2015**

State	During August 2014	During July 2015	During August 2015		
			Number	Percent of previous year	Percent of previous month
	(1,000 head)	(1,000 head)	(1,000 head)	(percent)	(percent)
Arizona .....	21	23	21	100	91
California .....	40	41	41	103	100
Colorado .....	145	90	130	90	144
Idaho .....	33	37	36	109	97
Iowa .....	63	71	70	111	99
Kansas .....	410	395	370	90	94
Minnesota .....	15	11	22	147	200
Nebraska .....	425	390	410	96	105
Oklahoma .....	50	38	50	100	132
South Dakota .....	35	17	31	89	182
Texas .....	410	365	385	94	105
Washington .....	44	34	30	68	88
Other States .....	34	35	36	106	103
United States .....	1,725	1,547	1,632	95	105

**Number of Cattle Placed on 1,000+ Capacity Feedlots – United States**

Million head



**Number of Cattle Placed on Feed by Weight Group on 1,000+ Capacity Feedlots by Month – States and United States: 2014 and 2015**

State	During August									
	Under 600 lbs		600-699 lbs		700-799 lbs		800+ lbs		Total	
	2014	2015	2014	2015	2014	2015	2014	2015	2014	2015
	(1,000 head)	(1,000 head)	(1,000 head)	(1,000 head)	(1,000 head)	(1,000 head)	(1,000 head)	(1,000 head)	(1,000 head)	(1,000 head)
Colorado .....	30	20	15	10	35	30	65	70	145	130
Kansas .....	75	65	80	65	110	95	145	145	410	370
Nebraska .....	55	50	50	35	95	85	225	240	425	410
Texas .....	170	175	95	70	85	85	60	55	410	385
Other States .....	80	85	45	35	70	67	140	150	335	337
United States .....	410	395	285	215	395	362	635	660	1,725	1,632

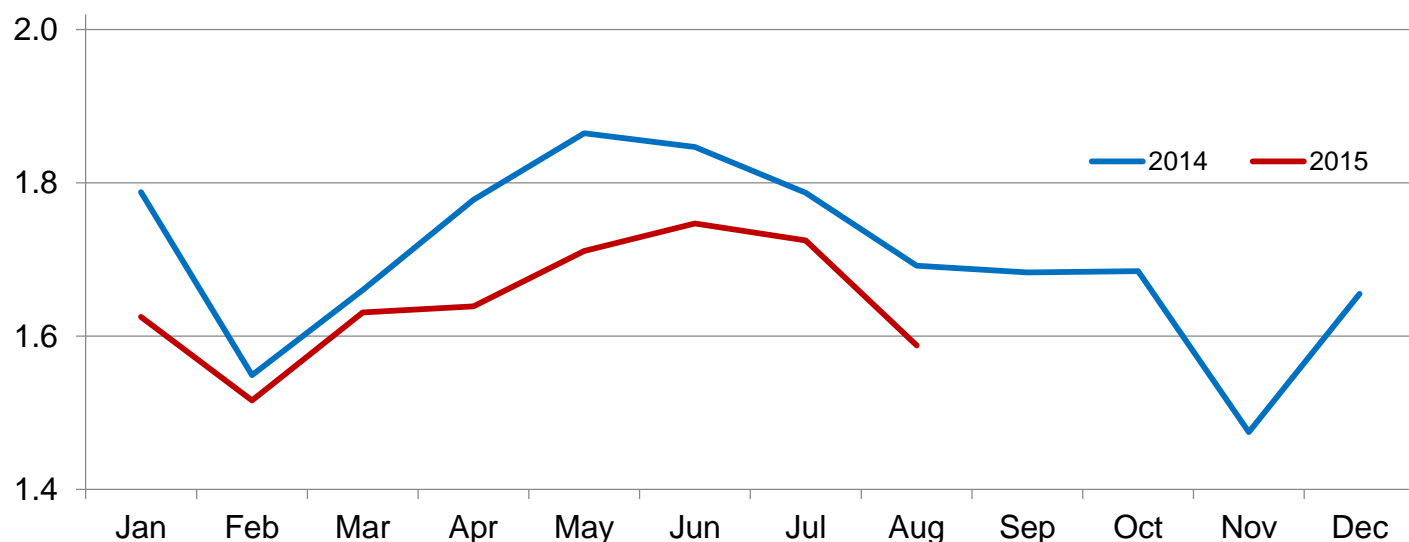
State	During July									
	Under 600 lbs		600-699 lbs		700-799 lbs		800+ lbs		Total	
	2014	2015	2014	2015	2014	2015	2014	2015	2014	2015
	(1,000 head)	(1,000 head)	(1,000 head)	(1,000 head)	(1,000 head)	(1,000 head)	(1,000 head)	(1,000 head)	(1,000 head)	(1,000 head)
Colorado .....	25	20	15	15	20	15	30	40	90	90
Kansas .....	80	65	70	70	110	115	140	145	400	395
Nebraska .....	55	40	50	50	85	85	185	215	375	390
Texas .....	185	155	85	70	85	65	55	75	410	365
Other States .....	80	85	40	30	54	47	110	145	284	307
United States .....	425	365	260	235	354	327	520	620	1,559	1,547

**Number of Cattle Marketed on 1,000+ Capacity Feedlots by Month – States and United States: 2014 and 2015**

State	During August 2014	During July 2015	During August 2015		
			Number	Percent of previous year	Percent of previous month
			(1,000 head)	(percent)	(percent)
Arizona .....	25	22	17	68	77
California .....	40	41	36	90	88
Colorado .....	150	125	135	90	108
Idaho .....	37	41	40	108	98
Iowa .....	80	80	77	96	96
Kansas .....	345	395	340	99	86
Minnesota .....	17	18	14	82	78
Nebraska .....	440	455	400	91	88
Oklahoma .....	44	47	49	111	104
South Dakota .....	34	34	34	100	100
Texas .....	415	395	360	87	91
Washington .....	33	38	44	133	116
Other States .....	32	34	42	131	124
United States .....	1,692	1,725	1,588	94	92

## Number of Cattle Marketed on 1,000+ Capacity Feedlots – United States

Million head



### Other Disappearance on 1,000+ Capacity Feedlots by Month – States and United States: 2014 and 2015

State	During August 2014 (1,000 head)	During July 2015 (1,000 head)	During August 2015		
			Number (1,000 head)	Percent of previous year (percent)	Percent of previous month (percent)
Arizona .....	1	2	2	200	100
California .....	5	5	5	100	100
Colorado .....	5	5	5	100	100
Idaho .....	1	1	1	100	100
Iowa .....	3	1	3	100	300
Kansas .....	15	10	10	67	100
Minnesota .....	1	1	1	100	100
Nebraska .....	15	15	10	67	67
Oklahoma .....	1	1	1	100	100
South Dakota .....	1	3	2	200	67
Texas .....	15	10	15	100	150
Washington .....	1	1	1	100	100
Other States .....	2	1	4	200	400
United States .....	66	56	60	91	107

## Terms and Definitions of Cattle on Feed Estimates

**Cattle on feed** are steers and heifers being fed a ration of grain, silage, hay and/or protein supplement for slaughter market that are expected to produce a carcass that will grade select or better. It excludes cattle being "backgrounded only" for later sale as feeders or later placement in another feedlot.

**Placements** are steers and heifers put into a feedlot, fed a ration which will produce a carcass that will grade select or better, and are intended for the slaughter market.

**Marketings** are steers and heifers shipped out of feedlots to a slaughter market.

**Other disappearance** includes death loss, movement from feedlots to pasture, and shipments to other feedlots for further feeding.

## Reliability of Cattle on Feed Estimates

**Survey Procedures:** During January and July all known feedlots in the United States with capacity of 1,000 or more head are surveyed to provide data for cattle on feed estimates. During the other months, all known feedlots from 16 States are surveyed. The 16 States account for approximately 98 percent of the cattle on feed in feedlots with capacity of 1,000 or more head. Individual State estimates are published monthly for 12 of the 16 States. Data collected from the remaining 4 States are used to establish the "Other States" estimates. These 4 States include Illinois, New Mexico, Oregon, and Wyoming. The "Other States" category represents all cattle on feed with a capacity of 1,000 or more head for the rest of the United States.

**Estimating Procedures:** These cattle on feed estimates were prepared by the Agricultural Statistics Board after reviewing recommendations and analysis submitted by each State office. Regional and State survey data were reviewed for reasonableness with each other and with estimates from the previous month when establishing the current estimates.

**Revision Policy:** Revisions to previous estimates are made to improve month to month relationships. Estimates for the previous month are subject to revision in all States each month when current estimates are made. In February, all monthly estimates for the previous year, and the number of feedlots and annual marketings from two years ago are reviewed and subject to revisions. The reviews are primarily based on slaughter data, state check-off or brand data, and any other data that may have been received after the original estimate was made. Estimates will also be reviewed after data from the Census of Agriculture are available. No revisions will be made after that date and estimates become final.

**Reliability:** Since all 1,000+ capacity cattle on feed operators in every State are not included in the monthly survey, survey estimates are subject to sampling variability. Survey results are also subject to non-sampling errors such as omissions, duplications, and mistakes in reporting, recording, and processing the data. The effects of these errors cannot be measured directly. They are minimized through rigid quality controls in the data collection process and through a careful review of all reported data for consistency and reasonableness.

To assist users in evaluating the reliability of estimates in this report, the "**Root Mean Square Error**" is shown for selected items in the table on the following page. The "Root Mean Square Error" is a statistical measure based on past performance and is computed using the differences between first and latest estimates. The "Root Mean Square Error" for cattle on feed inventory estimates over the past 24 months is 0.6 percent. This means that chances are 2 out of 3 that the final estimate will not be above or below the current estimate of 9.99 million head by more than 0.6 percent. Chances are 9 out of 10 that the difference will not exceed 1.0 percent.

The table on the following page shows a 24 month record of the range of differences between first and latest estimates for selected items. Using estimates of number on feed as an example, changes between the first estimate and the latest estimate during the past 24 months have averaged 49,000 head, ranging from 0 to 97,000 head. During this period the initial estimate has been above the latest estimate 16 times and has been below the latest estimate 4 times. This does not imply that the initial estimate is likely to understate or overstate final inventory.

## Reliability of Monthly Cattle on Feed Estimates

[Based on data for the past 24 months]

Item	Root mean square error	90 percent confidence level	Difference between first and latest estimate				
			Average	Smallest	Largest	Months	
						Below latest	Above latest
	(percent)	(percent)	(1,000)	(1,000)	(1,000)	(number)	(number)
Number on feed .....	0.6	1.0	49	0	97	4	16
Placements .....	0.8	1.4	10	0	37	11	9
Marketings .....	0.4	0.8	3	0	29	0	4

## Information Contacts

Listed below are the commodity specialists in the Livestock Branch of the National Agricultural Statistics Service to contact for additional information. E-mail inquiries may be sent to [nass@nass.usda.gov](mailto:nass@nass.usda.gov).

Dan Kerestes, Chief, Livestock Branch .....	(202) 720-3570
Scott Hollis, Head, Livestock Section .....	(202) 690-2424
Sherry Bertramsen – Livestock Slaughter .....	(202) 720-3240
Doug Bounds – Hogs and Pigs .....	(202) 720-3106
Donnie Fike – Dairy Products .....	(202) 690-3236
Michael Klamm – Cattle, Cattle on Feed .....	(202) 720-3040
Mike Miller – Milk Production and Milk Cows .....	(202) 720-3278
Vacant – Sheep and Goats .....	(202) 720-3570



## Access to NASS Reports

For your convenience, you may access NASS reports and products the following ways:

- All reports are available electronically, at no cost, on the NASS web site: <http://www.nass.usda.gov>
- Both national and state specific reports are available via a free e-mail subscription. To set-up this free subscription, visit <http://www.nass.usda.gov> and in the “Follow NASS” box under “Receive reports by Email,” click on “National” or “State” to select the reports you would like to receive.

For more information on NASS surveys and reports, call the NASS Agricultural Statistics Hotline at (800) 727-9540, 7:30 a.m. to 4:00 p.m. ET, or e-mail: [nass@nass.usda.gov](mailto:nass@nass.usda.gov).

The U.S. Department of Agriculture (USDA) prohibits discrimination against its customers, employees, and applicants for employment on the basis of race, color, national origin, age, disability, sex, gender identity, religion, reprisal, and where applicable, political beliefs, marital status, familial or parental status, sexual orientation, or all or part of an individual's income is derived from any public assistance program, or protected genetic information in employment or in any program or activity conducted or funded by the Department. (Not all prohibited bases will apply to all programs and/or employment activities.)

If you wish to file a Civil Rights program complaint of discrimination, complete the [USDA Program Discrimination Complaint Form](#) (PDF), found online at [http://www.ascr.usda.gov/complaint\\_filing\\_cust.html](http://www.ascr.usda.gov/complaint_filing_cust.html), or at any USDA office, or call (866) 632-9992 to request the form. You may also write a letter containing all of the information requested in the form. Send your completed complaint form or letter to us by mail at U.S. Department of Agriculture, Director, Office of Adjudication, 1400 Independence Avenue, S.W., Washington, D.C. 20250-9410, by fax (202) 690-7442 or email at [program.intake@usda.gov](mailto:program.intake@usda.gov).

**USDA NASS Data Users' Meeting**  
**Wednesday, October 28, 2015**

**University of Chicago – Gleacher Center**  
**450 North Cityfront Plaza Drive**  
**Chicago, Illinois 60611**  
**312-464-8787**

The USDA's National Agricultural Statistics Service will be organizing an open forum for data users. The purpose will be to provide updates on pending changes in the various statistical and information programs and seek comments and input from data users. Other USDA agencies to be represented will include the Agricultural Marketing Service, the Economic Research Service, the Foreign Agricultural Service, and the World Agricultural Outlook Board. The Foreign Trade Division from the Census Bureau will also be included in the meeting.

For registration details or additional information for the Data Users' Meeting, see the NASS homepage at <http://www.nass.usda.gov/meeting/> or contact Tina Hall (NASS) at 202-720-3896 or at [tina.hall@nass.usda.gov](mailto:tina.hall@nass.usda.gov) .

This Data Users' Meeting precedes the Industry Outlook Conference that will be held at the same location on Thursday, October 29, 2015. The outlook meeting brings together analysts from various commodity sectors to discuss the outlook situation. For registration details or additional information for the Industry Outlook Conference, see the conference webpage on the LMIC website: <http://lmic.info/page/meetings>. For more information, contact James Robb at (303) 716-9933.