



Released October 23, 2015, by the National Agricultural Statistics Service (NASS), Agricultural Statistics Board, United States Department of Agriculture (USDA).

United States Cattle on Feed Up 2 Percent

Cattle and calves on feed for the slaughter market in the United States for feedlots with capacity of 1,000 or more head totaled 10.2 million head on October 1, 2015. The inventory was 2 percent above October 1, 2014. The inventory included 6.93 million steers and steer calves, up 7 percent from the previous year. This group accounted for 68 percent of the total inventory. Heifers and heifer calves accounted for 3.29 million head, down 7 percent from 2014. October 1, 2015 heifers and heifer calves inventory is the lowest percent of total October inventory since the series began in 1996.

Placements in feedlots during September totaled 1.93 million head, 4 percent below 2014. Net placements were 1.87 million head. During September, placements of cattle and calves weighing less than 600 pounds were 395,000 head, 600-699 pounds were 290,000 head, 700-799 pounds were 416,000 head, and 800 pounds and greater were 830,000 head. Placements are the lowest for September since the series began in 1996.

Marketings of fed cattle during September totaled 1.64 million head, 2 percent below 2014.

Other disappearance totaled 57,000 head during September, 12 percent below 2014.

Number of Cattle on Feed, Placements, Marketings, and Other Disappearance on 1,000+ Capacity Feedlots – United States: October 1, 2014 and 2015

Item	Number		Percent of previous year
	2014	2015	
	(1,000 head)	(1,000 head)	(percent)
On feed September 1	9,719	9,986	103
Placed on feed during September	2,014	1,931	96
Fed cattle marketed during September	1,683	1,642	98
Other disappearance during September	65	57	88
On feed October 1	9,985	10,218	102

Number of Cattle on Feed, Placements, Marketings, and Other Disappearance on 1,000+ Capacity Feedlots – United States: September 1, 2014 and 2015

Item	Number		Percent of previous year
	2014	2015	
	(1,000 head)	(1,000 head)	(percent)
On feed August 1	9,752	10,002	103
Placed on feed during August	1,725	1,632	95
Fed cattle marketed during August	1,692	1,588	94
Other disappearance during August	66	60	91
On feed September 1	9,719	9,986	103

Number on Feed by Class on 1,000+ Capacity Feedlots – United States: October 1, 2014 and 2015

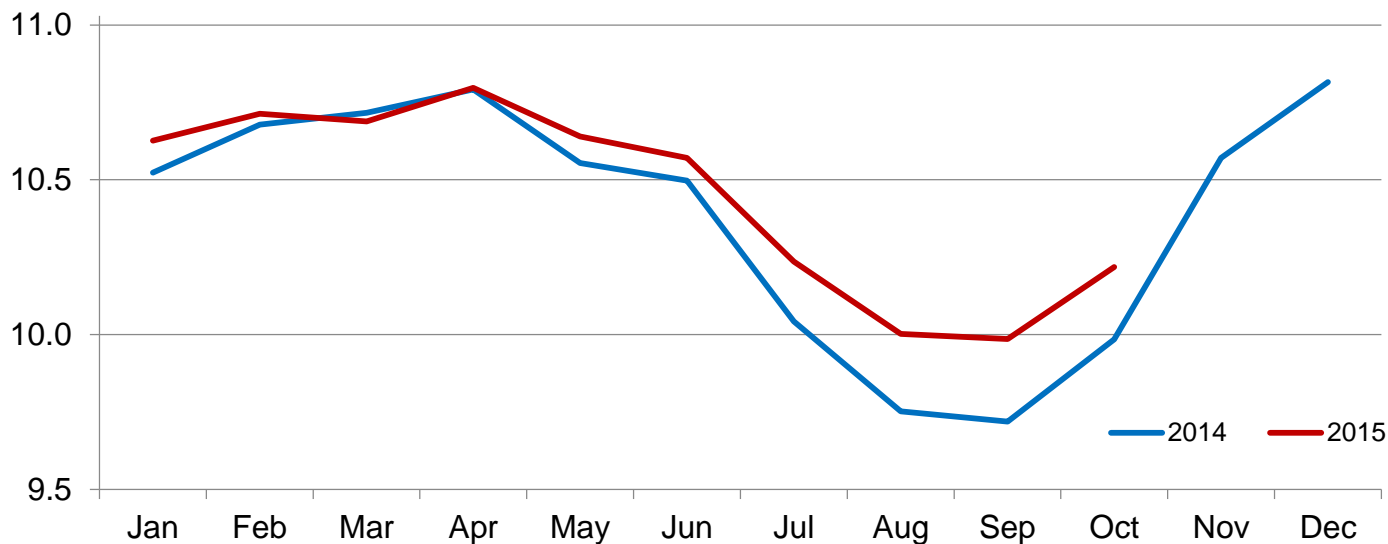
Item	Number		Percent of previous year
	2014	2015	
	(1,000 Head)	(1,000 Head)	(percent)
Class on feed October 1			
Steers and steer calves	6,447	6,927	107
Heifers and heifer calves	3,538	3,291	93

Number of Cattle on Feed on 1,000+ Capacity Feedlots by Month – States and United States: 2014 and 2015

State	October 1, 2014	September 1, 2015	October 1, 2015		
			Number	Percent of previous year	Percent of previous month
	(1,000 head)	(1,000 head)	(1,000 head)	(percent)	(percent)
Arizona	252	241	240	95	100
California	415	455	460	111	101
Colorado	820	780	830	101	106
Idaho	195	215	220	113	102
Iowa	560	620	600	107	97
Kansas	2,010	1,950	2,020	100	104
Minnesota	113	140	138	122	99
Nebraska	2,230	2,200	2,270	102	103
Oklahoma	245	250	255	104	102
South Dakota	180	205	205	114	100
Texas	2,470	2,450	2,490	101	102
Washington	190	195	195	103	100
Other States	305	285	295	97	104
United States	9,985	9,986	10,218	102	102

Cattle on Feed Inventory on 1,000+ Capacity Feedlots – United States

Million head

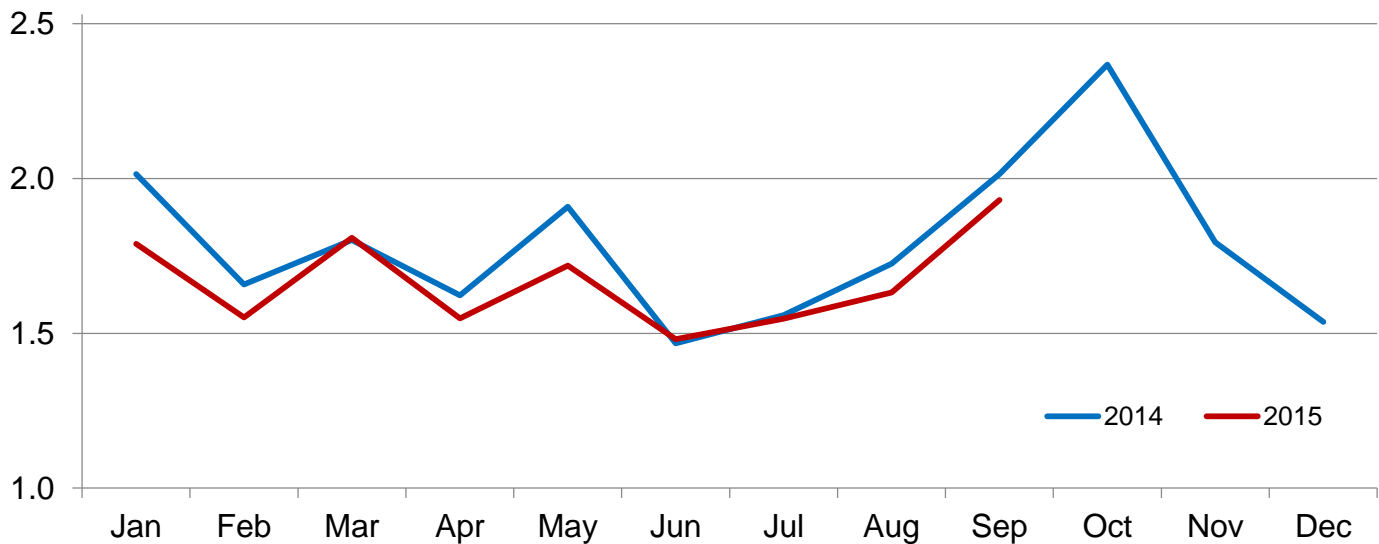


Number of Cattle Placed on Feed on 1,000+ Capacity Feedlots by Month – States and United States: 2014 and 2015

State	During September 2014 (1,000 head)	During August 2015 (1,000 head)	During September 2015		
			Number (1,000 head)	Percent of previous year (percent)	Percent of previous month (percent)
Arizona	20	21	18	90	86
California	43	41	48	112	117
Colorado	200	130	210	105	162
Idaho	64	36	49	77	136
Iowa	99	70	85	86	121
Kansas	400	370	400	100	108
Minnesota	20	22	17	85	77
Nebraska	530	410	510	96	124
Oklahoma	55	50	52	95	104
South Dakota	50	31	43	86	139
Texas	445	385	420	94	109
Washington	43	30	36	84	120
Other States	45	36	43	96	119
United States	2,014	1,632	1,931	96	118

Number of Cattle Placed on 1000+ Capacity Feedlots – United States

Million head



Number of Cattle Placed on Feed by Weight Group on 1,000+ Capacity Feedlots by Month – States and United States: 2014 and 2015

State	During September									
	Under 600 lbs		600-699 lbs		700-799 lbs		800+ lbs		Total	
	2014	2015	2014	2015	2014	2015	2014	2015	2014	2015
	(1,000 head)	(1,000 head)	(1,000 head)	(1,000 head)	(1,000 head)	(1,000 head)	(1,000 head)	(1,000 head)	(1,000 head)	(1,000 head)
Colorado	35	30	20	15	45	40	100	125	200	210
Kansas	70	60	80	80	115	120	135	140	400	400
Nebraska	75	60	75	50	95	85	285	315	530	510
Texas	170	140	115	100	100	105	60	75	445	420
Other States	110	105	60	45	79	66	190	175	439	391
United States	460	395	350	290	434	416	770	830	2,014	1,931

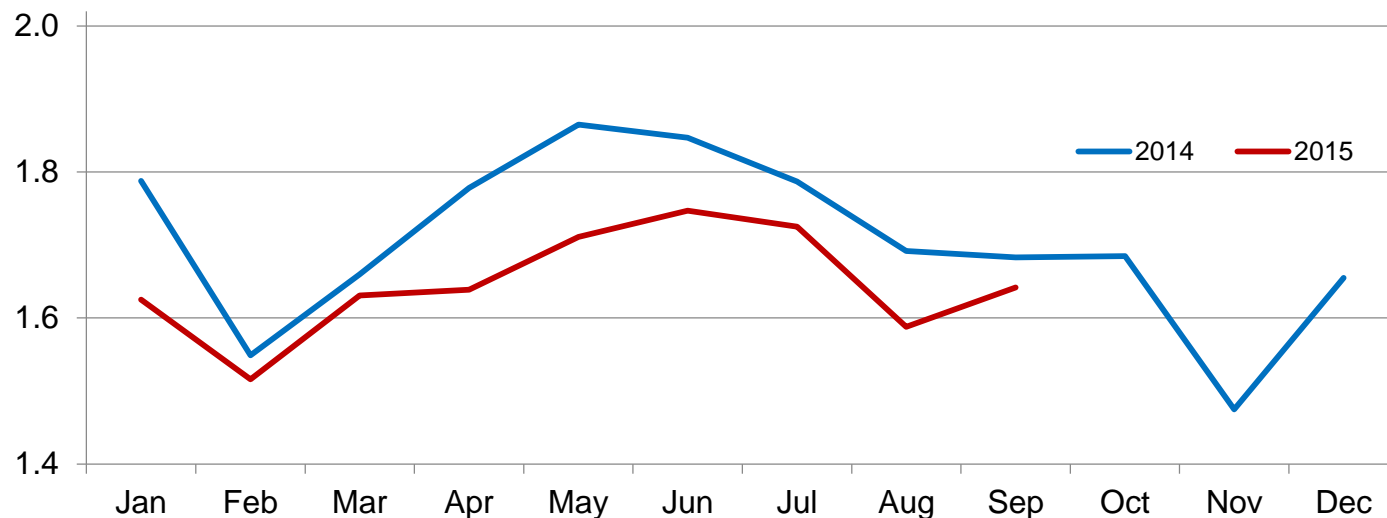
State	During August									
	Under 600 lbs		600-699 lbs		700-799 lbs		800+ lbs		Total	
	2014	2015	2014	2015	2014	2015	2014	2015	2014	2015
	(1,000 head)	(1,000 head)	(1,000 head)	(1,000 head)	(1,000 head)	(1,000 head)	(1,000 head)	(1,000 head)	(1,000 head)	(1,000 head)
Colorado	30	20	15	10	35	30	65	70	145	130
Kansas	75	65	80	65	110	95	145	145	410	370
Nebraska	55	50	50	35	95	85	225	240	425	410
Texas	170	175	95	70	85	85	60	55	410	385
Other States	80	85	45	35	70	67	140	150	335	337
United States	410	395	285	215	395	362	635	660	1,725	1,632

Number of Cattle Marketed on 1,000+ Capacity Feedlots by Month – States and United States: 2014 and 2015

State	During September 2014	During August 2015	During September 2015		
			Number	Percent of previous year	Percent of previous month
			(1,000 head)	(percent)	(percent)
Arizona	24	17	17	71	100
California	38	36	38	100	106
Colorado	155	135	155	100	115
Idaho	38	40	43	113	108
Iowa	114	77	101	89	131
Kansas	325	340	320	98	94
Minnesota	18	14	18	100	129
Nebraska	400	400	430	108	108
Oklahoma	54	49	46	85	94
South Dakota	42	34	42	100	124
Texas	410	360	365	89	101
Washington	32	44	35	109	80
Other States	33	42	32	97	76
United States	1,683	1,588	1,642	98	103

Number of Cattle Marketed on 1,000+ Capacity Feedlots – United States

Million head



Other Disappearance on 1,000+ Capacity Feedlots by Month – States and United States: 2014 and 2015

State	During September 2014	During August 2015	During September 2015		
			Number	Percent of previous year	Percent of previous month
	(1,000 head)	(1,000 head)	(1,000 head)	(percent)	(percent)
Arizona	1	2	2	200	100
California	5	5	5	100	100
Colorado	5	5	5	100	100
Idaho	1	1	1	100	100
Iowa	5	3	4	80	133
Kansas	15	10	10	67	100
Minnesota	1	1	1	100	100
Nebraska	10	10	10	100	100
Oklahoma	1	1	1	100	100
South Dakota	3	2	1	33	50
Texas	15	15	15	100	100
Washington	1	1	1	100	100
Other States	2	4	1	50	25
United States	65	60	57	88	95

**Number on Feed by Class on 1,000+ Capacity Feedlots by Quarter – States and United States:
2014 and 2015**

State	Steers and steer calves			Heifers and heifer calves		
	Oct 1, 2014	Jul 1, 2015	Oct 1, 2015	Oct 1, 2014	Jul 1, 2015	Oct 1, 2015
	(1,000 Head)	(1,000 Head)	(1,000 Head)	(1,000 Head)	(1,000 Head)	(1,000 Head)
Arizona	249	236	236	3	4	4
California	365	425	430	50	35	30
Colorado	520	560	570	300	270	260
Idaho	110	150	145	85	75	75
Iowa	430	490	450	130	150	150
Kansas	1,050	1,030	1,100	960	910	920
Minnesota	96	126	118	17	15	20
Nebraska	1,460	1,570	1,520	770	710	750
Oklahoma	165	190	180	80	70	75
South Dakota	102	142	118	78	88	87
Texas	1,590	1,650	1,740	880	830	750
Washington	110	135	120	80	80	75
Other States	200	205	200	105	90	95
United States	6,447	6,909	6,927	3,538	3,327	3,291

Terms and Definitions of Cattle on Feed Estimates

Cattle on feed are steers and heifers being fed a ration of grain, silage, hay and/or protein supplement for slaughter market that are expected to produce a carcass that will grade select or better. It excludes cattle being "backgrounded only" for later sale as feeders or later placement in another feedlot.

Placements are steers and heifers put into a feedlot, fed a ration which will produce a carcass that will grade select or better, and are intended for the slaughter market.

Marketings are steers and heifers shipped out of feedlots to a slaughter market.

Other disappearance includes death loss, movement from feedlots to pasture, and shipments to other feedlots for further feeding.

Reliability of Cattle on Feed Estimates

Survey Procedures: During January and July all known feedlots in the United States with capacity of 1,000 or more head are surveyed to provide data for cattle on feed estimates. During the other months, all known feedlots from 16 States are surveyed. The 16 States account for approximately 98 percent of the cattle on feed in feedlots with capacity of 1,000 or more head. Individual State estimates are published monthly for 12 of the 16 States. Data collected from the remaining 4 States are used to establish the "Other States" estimates. These 4 States include Illinois, New Mexico, Oregon, and Wyoming. The "Other States" category represents all cattle on feed with a capacity of 1,000 or more head for the rest of the United States.

Estimating Procedures: These cattle on feed estimates were prepared by the Agricultural Statistics Board after reviewing recommendations and analysis submitted by each State office. Regional and State survey data were reviewed for reasonableness with each other and with estimates from the previous month when establishing the current estimates.

Revision Policy: Revisions to previous estimates are made to improve month to month relationships. Estimates for the previous month are subject to revision in all States each month when current estimates are made. In February, all monthly estimates for the previous year, and the number of feedlots and annual marketings from two years ago are reviewed and subject to revisions. The reviews are primarily based on slaughter data, state check-off or brand data, and any other data that may have been received after the original estimate was made. Estimates will also be reviewed after data from the Census of Agriculture are available. No revisions will be made after that date and estimates become final.

Reliability: Since all 1,000+ capacity cattle on feed operators in every State are not included in the monthly survey, survey estimates are subject to sampling variability. Survey results are also subject to non-sampling errors such as omissions, duplications, and mistakes in reporting, recording, and processing the data. The effects of these errors cannot be measured directly. They are minimized through rigid quality controls in the data collection process and through a careful review of all reported data for consistency and reasonableness.

To assist users in evaluating the reliability of estimates in this report, the "**Root Mean Square Error**" is shown for selected items in the table on the following page. The "Root Mean Square Error" is a statistical measure based on past performance and is computed using the differences between first and latest estimates. The "Root Mean Square Error" for cattle on feed inventory estimates over the past 24 months is 0.6 percent. This means that chances are 2 out of 3 that the final estimate will not be above or below the current estimate of 10.2 million head by more than 0.6 percent. Chances are 9 out of 10 that the difference will not exceed 1.0 percent.

The table on the following page shows a 24 month record of the range of differences between first and latest estimates for selected items. Using estimates of number on feed as an example, changes between the first estimate and the latest estimate during the past 24 months have averaged 47,000 head, ranging from 0 to 97,000 head. During this period the initial estimate has been above the latest estimate 15 times and has been below the latest estimate 4 times. This does not imply that the initial estimate is likely to understate or overstate final inventory.

Reliability of Monthly Cattle on Feed Estimates

[Based on data for the past 24 months]

Item	Root mean square error	90 percent confidence level	Difference between first and latest estimate				
			Average	Smallest	Largest	Months	
						Below latest	Above latest
	(percent)	(percent)	(1,000)	(1,000)	(1,000)	(number)	(number)
Number on feed	0.6	1.0	47	0	97	4	15
Placements	0.8	1.4	10	0	37	11	8
Marketings	0.4	0.7	2	0	29	0	3

Information Contacts

Listed below are the commodity specialists in the Livestock Branch of the National Agricultural Statistics Service to contact for additional information. E-mail inquiries may be sent to nass@nass.usda.gov.

Dan Kerestes, Chief, Livestock Branch	(202) 720-3570
Scott Hollis, Head, Livestock Section	(202) 690-2424
Sherry Bertramsen – Livestock Slaughter	(202) 720-3240
Doug Bounds – Hogs and Pigs	(202) 720-3106
David Colwell – Sheep and Goats	(202) 720-8784
Donnie Fike – Dairy Products	(202) 690-3236
Michael Klamm – Cattle, Cattle on Feed	(202) 720-3040
Mike Miller – Milk Production and Milk Cows	(202) 720-3278

Access to NASS Reports

For your convenience, you may access NASS reports and products the following ways:

- All reports are available electronically, at no cost, on the NASS web site: <http://www.nass.usda.gov>
- Both national and state specific reports are available via a free e-mail subscription. To set-up this free subscription, visit <http://www.nass.usda.gov> and in the “Follow NASS” box under “Receive reports by Email,” click on “National” or “State” to select the reports you would like to receive.

For more information on NASS surveys and reports, call the NASS Agricultural Statistics Hotline at (800) 727-9540, 7:30 a.m. to 4:00 p.m. ET, or e-mail: nass@nass.usda.gov.

The U.S. Department of Agriculture (USDA) prohibits discrimination against its customers, employees, and applicants for employment on the basis of race, color, national origin, age, disability, sex, gender identity, religion, reprisal, and where applicable, political beliefs, marital status, familial or parental status, sexual orientation, or all or part of an individual's income is derived from any public assistance program, or protected genetic information in employment or in any program or activity conducted or funded by the Department. (Not all prohibited bases will apply to all programs and/or employment activities.)

If you wish to file a Civil Rights program complaint of discrimination, complete the [USDA Program Discrimination Complaint Form](#) (PDF), found online at http://www.ascr.usda.gov/complaint_filing_cust.html, or at any USDA office, or call (866) 632-9992 to request the form. You may also write a letter containing all of the information requested in the form. Send your completed complaint form or letter to us by mail at U.S. Department of Agriculture, Director, Office of Adjudication, 1400 Independence Avenue, S.W., Washington, D.C. 20250-9410, by fax (202) 690-7442 or email at program.intake@usda.gov.

USDA NASS Data Users' Meeting
Wednesday, October 28, 2015

University of Chicago – Gleacher Center
450 North Cityfront Plaza Drive
Chicago, Illinois 60611
312-464-8787

The USDA's National Agricultural Statistics Service will be organizing an open forum for data users. The purpose will be to provide updates on pending changes in the various statistical and information programs and seek comments and input from data users. Other USDA agencies to be represented will include the Agricultural Marketing Service, the Economic Research Service, the Foreign Agricultural Service, and the World Agricultural Outlook Board. The Foreign Trade Division from the Census Bureau will also be included in the meeting.

For registration details or additional information for the Data Users' Meeting, see the NASS homepage at <http://www.nass.usda.gov/meeting/> or contact Tina Hall (NASS) at 202-720-3896 or at tina.hall@nass.usda.gov .

This Data Users' Meeting precedes the Industry Outlook Conference that will be held at the same location on Thursday, October 29, 2015. The outlook meeting brings together analysts from various commodity sectors to discuss the outlook situation. For registration details or additional information for the Industry Outlook Conference, see the conference webpage on the LMIC website: <http://lmic.info/page/meetings>. For more information, contact James Robb at (303) 716-9933.