



# Cattle on Feed

ISSN: 1948-9080

---

Released November 20, 2015, by the National Agricultural Statistics Service (NASS), Agricultural Statistics Board, United States Department of Agriculture (USDA).

## United States Cattle on Feed Up 2 Percent

**Cattle and calves on feed** for the slaughter market in the United States for feedlots with capacity of 1,000 or more head totaled 10.8 million head on November 1, 2015. The inventory was 2 percent above November 1, 2014.

**Placements** in feedlots during October totaled 2.28 million head, 4 percent below 2014. Net placements were 2.21 million head. During October, placements of cattle and calves weighing less than 600 pounds were 645,000 head, 600-699 pounds were 530,000 head, 700-799 pounds were 431,000 head, and 800 pounds and greater were 675,000 head.

**Marketings** of fed cattle during October totaled 1.63 million head, 3 percent below 2014. Marketings are the lowest for October since the series began in 1996.

**Other disappearance** totaled 75,000 head during October, 23 percent below 2014.

**Number of Cattle on Feed, Placements, Marketings, and Other Disappearance on 1,000+ Capacity Feedlots – United States: November 1, 2014 and 2015**

Item	Number		Percent of previous year
	2014	2015	
	(1,000 head)	(1,000 head)	(percent)
On feed October 1 .....	9,985	10,218	102
Placed on feed during October .....	2,368	2,281	96
Fed cattle marketed during October .....	1,685	1,630	97
Other disappearance during October .....	97	75	77
On feed November 1 .....	10,571	10,794	102

**Number of Cattle on Feed, Placements, Marketings, and Other Disappearance on 1,000+ Capacity Feedlots – United States: October 1, 2014 and 2015**

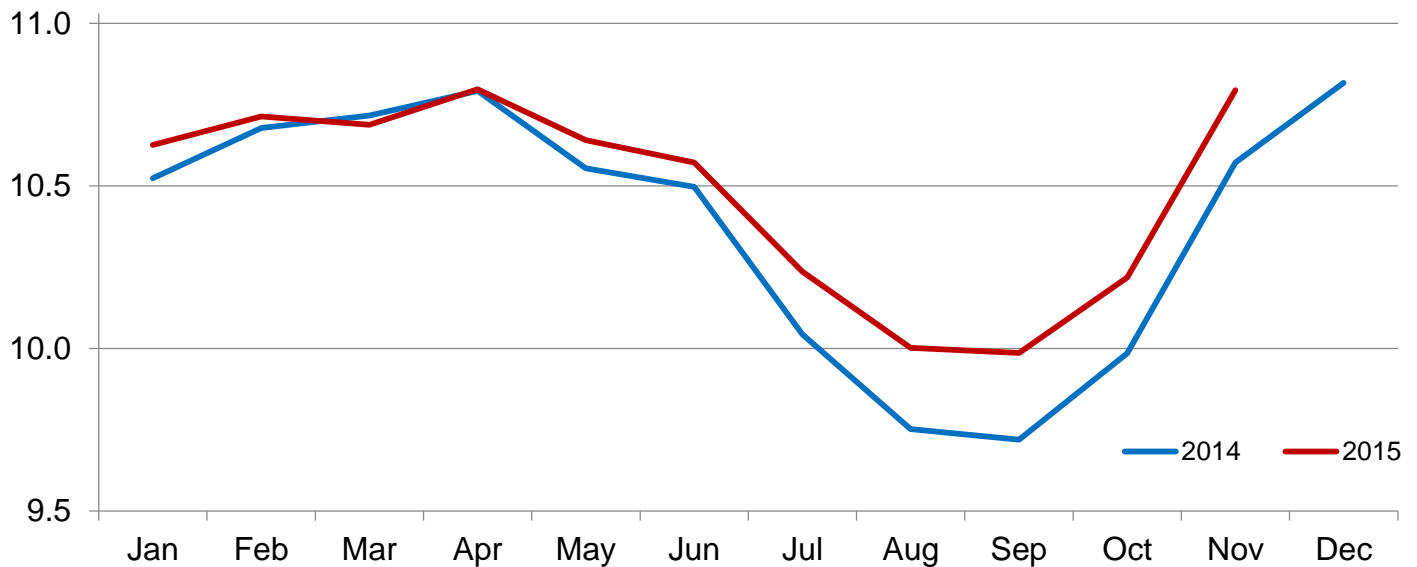
Item	Number		Percent of previous year
	2014	2015	
	(1,000 head)	(1,000 head)	(percent)
On feed September 1 .....	9,719	9,986	103
Placed on feed during September .....	2,014	1,931	96
Fed cattle marketed during September .....	1,683	1,642	98
Other disappearance during September .....	65	57	88
On feed October 1 .....	9,985	10,218	102

**Number of Cattle on Feed on 1,000+ Capacity Feedlots by Month – States and United States: 2014 and 2015**

State	November 1, 2014	October 1, 2015	November 1, 2015		
			Number	Percent of previous year	Percent of previous month
	(1,000 head)	(1,000 head)	(1,000 head)	(percent)	(percent)
Arizona .....	250	240	243	97	101
California .....	420	460	460	110	100
Colorado .....	880	830	880	100	106
Idaho .....	210	220	230	110	105
Iowa .....	590	600	640	108	107
Kansas .....	2,080	2,020	2,150	103	106
Minnesota .....	131	138	151	115	109
Nebraska .....	2,440	2,270	2,450	100	108
Oklahoma .....	260	255	270	104	106
South Dakota .....	220	205	240	109	117
Texas .....	2,550	2,490	2,560	100	103
Washington .....	215	195	205	95	105
Other States .....	325	295	315	97	107
United States .....	10,571	10,218	10,794	102	106

**Cattle on Feed Inventory on 1,000+ Capacity Feedlots – United States**

Million head

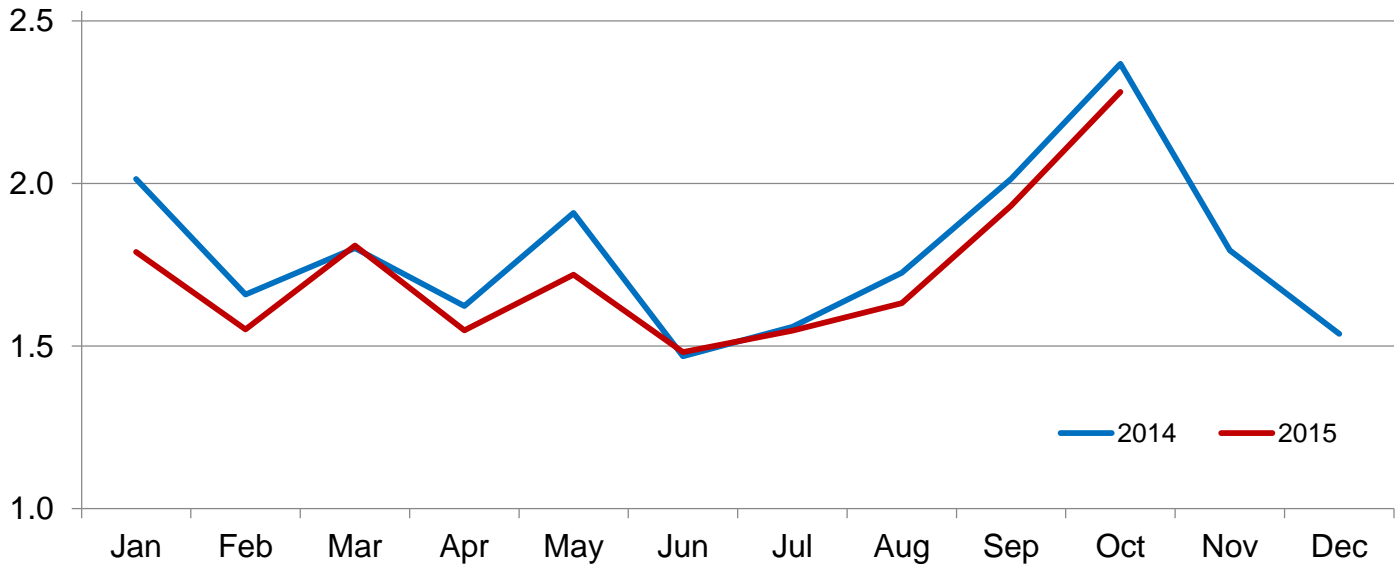


**Number of Cattle Placed on Feed on 1,000+ Capacity Feedlots by Month – States and United States: 2014 and 2015**

State	During October 2014	During September 2015	During October 2015		
			Number	Percent of previous year	Percent of previous month
	(1,000 head)	(1,000 head)	(1,000 head)	(percent)	(percent)
Arizona .....	22	18	23	105	128
California .....	53	48	43	81	90
Colorado .....	210	210	195	93	93
Idaho .....	61	49	58	95	118
Iowa .....	132	85	156	118	184
Kansas .....	420	400	445	106	111
Minnesota .....	30	17	30	100	176
Nebraska .....	660	510	645	98	126
Oklahoma .....	60	52	61	102	117
South Dakota .....	84	43	75	89	174
Texas .....	520	420	450	87	107
Washington .....	62	36	50	81	139
Other States .....	54	43	50	93	116
United States .....	2,368	1,931	2,281	96	118

**Number of Cattle Placed on 1,000+ Capacity Feedlots – United States**

Million head



**Number of Cattle Placed on Feed by Weight Group on 1,000+ Capacity Feedlots by Month – States and United States: 2014 and 2015**

State	During October									
	Under 600 lbs		600-699 lbs		700-799 lbs		800+ lbs		Total	
	2014	2015	2014	2015	2014	2015	2014	2015	2014	2015
	(1,000 head)	(1,000 head)	(1,000 head)	(1,000 head)	(1,000 head)	(1,000 head)	(1,000 head)	(1,000 head)	(1,000 head)	(1,000 head)
Colorado .....	55	55	45	45	45	30	65	65	210	195
Kansas .....	85	80	100	100	115	115	120	150	420	445
Nebraska .....	170	170	165	155	95	80	230	240	660	645
Texas .....	180	140	130	110	130	130	80	70	520	450
Other States .....	205	200	130	120	78	76	145	150	558	546
United States .....	695	645	570	530	463	431	640	675	2,368	2,281

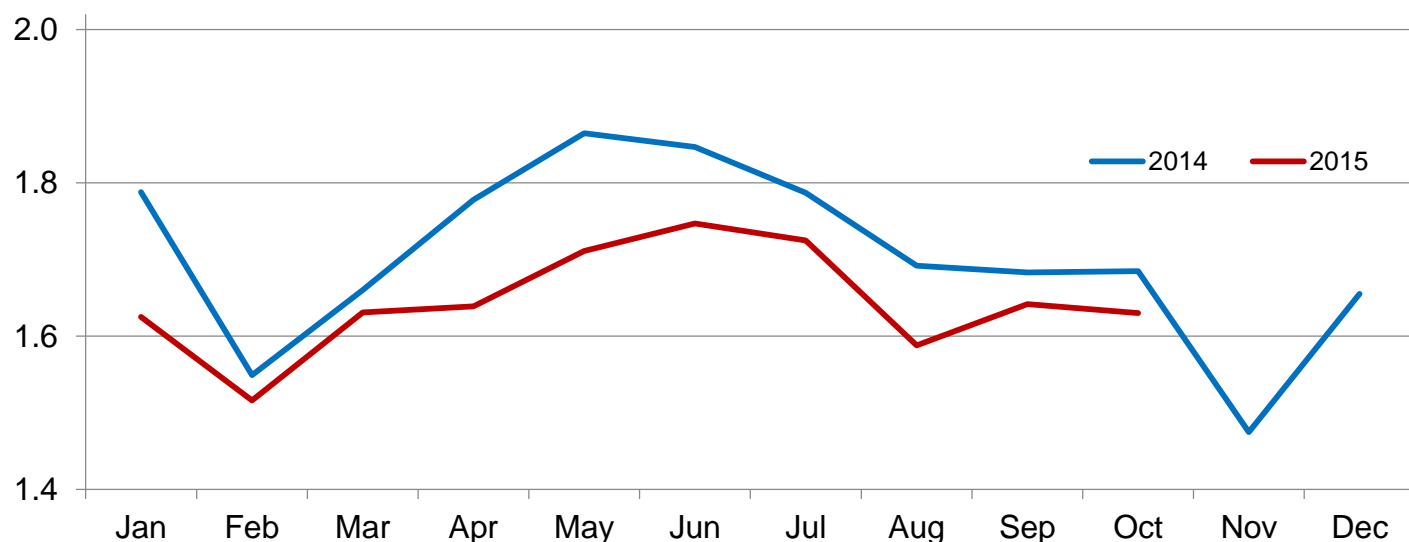
State	During September									
	Under 600 lbs		600-699 lbs		700-799 lbs		800+ lbs		Total	
	2014	2015	2014	2015	2014	2015	2014	2015	2014	2015
	(1,000 head)	(1,000 head)	(1,000 head)	(1,000 head)	(1,000 head)	(1,000 head)	(1,000 head)	(1,000 head)	(1,000 head)	(1,000 head)
Colorado .....	35	30	20	15	45	40	100	125	200	210
Kansas .....	70	60	80	80	115	120	135	140	400	400
Nebraska .....	75	60	75	50	95	85	285	315	530	510
Texas .....	170	140	115	100	100	105	60	75	445	420
Other States .....	110	105	60	45	79	66	190	175	439	391
United States .....	460	395	350	290	434	416	770	830	2,014	1,931

**Number of Cattle Marketed on 1,000+ Capacity Feedlots by Month – States and United States: 2014 and 2015**

State	During October 2014	During September 2015	During October 2015		
			Number	Percent of previous year	Percent of previous month
			(1,000 head)	(percent)	(percent)
Arizona .....	21	17	19	90	112
California .....	40	38	38	95	100
Colorado .....	145	155	140	97	90
Idaho .....	45	43	47	104	109
Iowa .....	100	101	113	113	112
Kansas .....	320	320	300	94	94
Minnesota .....	11	18	16	145	89
Nebraska .....	430	430	445	103	103
Oklahoma .....	43	46	45	105	98
South Dakota .....	43	42	39	91	93
Texas .....	420	365	360	86	99
Washington .....	35	35	39	111	111
Other States .....	32	32	29	91	91
United States .....	1,685	1,642	1,630	97	99

## Number of Cattle Marketed on 1,000+ Capacity Feedlots – United States

Million head



### Other Disappearance on 1,000+ Capacity Feedlots by Month – States and United States: 2014 and 2015

State	During October 2014 (1,000 head)	During September 2015 (1,000 head)	During October 2015		
			Number (1,000 head)	Percent of previous year (percent)	Percent of previous month (percent)
Arizona .....	3	2	1	33	50
California .....	8	5	5	63	100
Colorado .....	5	5	5	100	100
Idaho .....	1	1	1	100	100
Iowa .....	2	4	3	150	75
Kansas .....	30	10	15	50	150
Minnesota .....	1	1	1	100	100
Nebraska .....	20	10	20	100	200
Oklahoma .....	2	1	1	50	100
South Dakota .....	1	1	1	100	100
Texas .....	20	15	20	100	133
Washington .....	2	1	1	50	100
Other States .....	2	1	1	50	100
United States .....	97	57	75	77	132

## Terms and Definitions of Cattle on Feed Estimates

**Cattle on feed** are steers and heifers being fed a ration of grain, silage, hay and/or protein supplement for slaughter market that are expected to produce a carcass that will grade select or better. It excludes cattle being "backgrounded only" for later sale as feeders or later placement in another feedlot.

**Placements** are steers and heifers put into a feedlot, fed a ration which will produce a carcass that will grade select or better, and are intended for the slaughter market.

**Marketings** are steers and heifers shipped out of feedlots to a slaughter market.

**Other disappearance** includes death loss, movement from feedlots to pasture, and shipments to other feedlots for further feeding.

## Reliability of Cattle on Feed Estimates

**Survey Procedures:** During January and July all known feedlots in the United States with capacity of 1,000 or more head are surveyed to provide data for cattle on feed estimates. During the other months, all known feedlots from 16 States are surveyed. The 16 States account for approximately 98 percent of the cattle on feed in feedlots with capacity of 1,000 or more head. Individual State estimates are published monthly for 12 of the 16 States. Data collected from the remaining 4 States are used to establish the "Other States" estimates. These 4 States include Illinois, New Mexico, Oregon, and Wyoming. The "Other States" category represents all cattle on feed with a capacity of 1,000 or more head for the rest of the United States.

**Estimating Procedures:** These cattle on feed estimates were prepared by the Agricultural Statistics Board after reviewing recommendations and analysis submitted by each State office. Regional and State survey data were reviewed for reasonableness with each other and with estimates from the previous month when establishing the current estimates.

**Revision Policy:** Revisions to previous estimates are made to improve month to month relationships. Estimates for the previous month are subject to revision in all States each month when current estimates are made. In February, all monthly estimates for the previous year, and the number of feedlots and annual marketings from two years ago are reviewed and subject to revisions. The reviews are primarily based on slaughter data, state check-off or brand data, and any other data that may have been received after the original estimate was made. Estimates will also be reviewed after data from the Census of Agriculture are available. No revisions will be made after that date and estimates become final.

**Reliability:** Since all 1,000+ capacity cattle on feed operators in every State are not included in the monthly survey, survey estimates are subject to sampling variability. Survey results are also subject to non-sampling errors such as omissions, duplications, and mistakes in reporting, recording, and processing the data. The effects of these errors cannot be measured directly. They are minimized through rigid quality controls in the data collection process and through a careful review of all reported data for consistency and reasonableness.

To assist users in evaluating the reliability of estimates in this report, the "**Root Mean Square Error**" is shown for selected items in the table on the following page. The "Root Mean Square Error" is a statistical measure based on past performance and is computed using the differences between first and latest estimates. The "Root Mean Square Error" for cattle on feed inventory estimates over the past 24 months is 0.6 percent. This means that chances are 2 out of 3 that the final estimate will not be above or below the current estimate of 10.8 million head by more than 0.6 percent. Chances are 9 out of 10 that the difference will not exceed 1.0 percent.

The table on the following page shows a 24 month record of the range of differences between first and latest estimates for selected items. Using estimates of number on feed as an example, changes between the first estimate and the latest estimate during the past 24 months have averaged 45,000 head, ranging from 0 to 97,000 head. During this period the initial estimate has been above the latest estimate 14 times and has been below the latest estimate 4 times. This does not imply that the initial estimate is likely to understate or overstate final inventory.

## Reliability of Monthly Cattle on Feed Estimates

[Based on data for the past 24 months]

Item	Root mean square error	90 percent confidence level	Difference between first and latest estimate				
			Average	Smallest	Largest	Months	
						Below latest	Above latest
	(percent)	(percent)	(1,000)	(1,000)	(1,000)	(number)	(number)
Number on feed .....	0.6	1.0	45	0	97	4	14
Placements .....	0.7	1.2	8	0	29	11	7
Marketings .....	0.4	0.7	2	0	29	0	2

## Information Contacts

Listed below are the commodity specialists in the Livestock Branch of the National Agricultural Statistics Service to contact for additional information. E-mail inquiries may be sent to [nass@nass.usda.gov](mailto:nass@nass.usda.gov).

Dan Kerestes, Chief, Livestock Branch .....	(202) 720-3570
Scott Hollis, Head, Livestock Section .....	(202) 690-2424
Sherry Bertramsen – Livestock Slaughter .....	(202) 720-3240
Doug Bounds – Hogs and Pigs .....	(202) 720-3106
David Colwell – Sheep and Goats .....	(202) 720-8784
Donnie Fike – Dairy Products .....	(202) 690-3236
Michael Klamm – Cattle, Cattle on Feed .....	(202) 720-3040
Mike Miller – Milk Production and Milk Cows .....	(202) 720-3278



## Access to NASS Reports

For your convenience, you may access NASS reports and products the following ways:

- All reports are available electronically, at no cost, on the NASS web site: <http://www.nass.usda.gov>
- Both national and state specific reports are available via a free e-mail subscription. To set-up this free subscription, visit <http://www.nass.usda.gov> and click on “National” or “State” in upper right corner above “search” box to create an account and select the reports you would like to receive.

For more information on NASS surveys and reports, call the NASS Agricultural Statistics Hotline at (800) 727-9540, 7:30 a.m. to 4:00 p.m. ET, or e-mail: [nass@nass.usda.gov](mailto:nass@nass.usda.gov).

The U.S. Department of Agriculture (USDA) prohibits discrimination against its customers, employees, and applicants for employment on the basis of race, color, national origin, age, disability, sex, gender identity, religion, reprisal, and where applicable, political beliefs, marital status, familial or parental status, sexual orientation, or all or part of an individual's income is derived from any public assistance program, or protected genetic information in employment or in any program or activity conducted or funded by the Department. (Not all prohibited bases will apply to all programs and/or employment activities.)

If you wish to file a Civil Rights program complaint of discrimination, complete the [USDA Program Discrimination Complaint Form](#) (PDF), found online at [http://www.ascr.usda.gov/complaint\\_filing\\_cust.html](http://www.ascr.usda.gov/complaint_filing_cust.html), or at any USDA office, or call (866) 632-9992 to request the form. You may also write a letter containing all of the information requested in the form. Send your completed complaint form or letter to us by mail at U.S. Department of Agriculture, Director, Office of Adjudication, 1400 Independence Avenue, S.W., Washington, D.C. 20250-9410, by fax (202) 690-7442 or email at [program.intake@usda.gov](mailto:program.intake@usda.gov).