



# Cattle on Feed

ISSN: 1948-9080

---

Released December 18, 2015, by the National Agricultural Statistics Service (NASS), Agricultural Statistics Board, United States Department of Agriculture (USDA).

## United States Cattle on Feed Down Slightly

**Cattle and calves on feed** for the slaughter market in the United States for feedlots with capacity of 1,000 or more head totaled 10.8 million head on December 1, 2015. The inventory was slightly below December 1, 2014.

**Placements** in feedlots during November totaled 1.60 million head, 11 percent below 2014. Placements are the lowest for November since the series began in 1996. Net placements were 1.53 million head. During November, placements of cattle and calves weighing less than 600 pounds were 470,000 head, 600-699 pounds were 391,000 head, 700-799 pounds were 310,000 head, and 800 pounds and greater were 430,000 head.

**Marketings** of fed cattle during November totaled 1.53 million head, 4 percent above 2014.

**Other disappearance** totaled 74,000 head during November, unchanged from 2014.

**Number of Cattle on Feed, Placements, Marketings, and Other Disappearance on 1,000+ Capacity Feedlots – United States: December 1, 2014 and 2015**

Item	Number		Percent of previous year
	2014	2015	
	(1,000 head)	(1,000 head)	(percent)
On feed November 1 .....	10,571	10,799	102
Placed on feed during November .....	1,794	1,601	89
Fed cattle marketed during November .....	1,475	1,532	104
Other disappearance during November .....	74	74	100
On feed December 1 .....	10,816	10,794	100

**Number of Cattle on Feed, Placements, Marketings, and Other Disappearance on 1,000+ Capacity Feedlots – United States: November 1, 2014 and 2015**

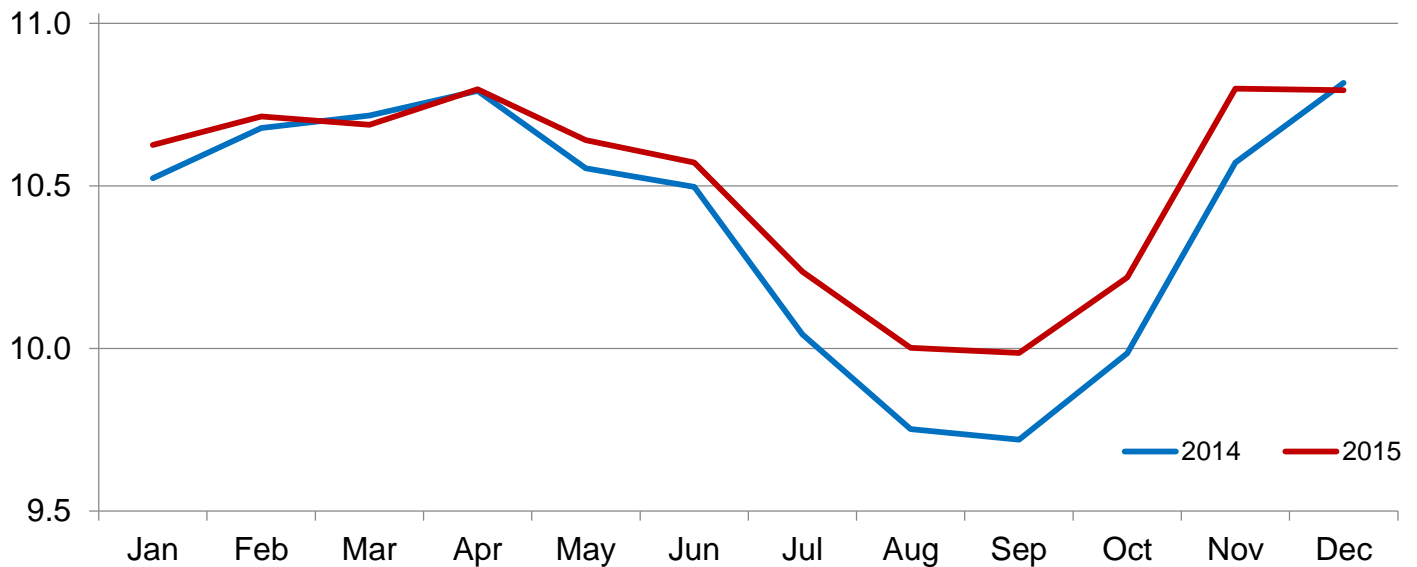
Item	Number		Percent of previous year
	2014	2015	
	(1,000 head)	(1,000 head)	(percent)
On feed October 1 .....	9,985	10,218	102
Placed on feed during October .....	2,368	2,286	97
Fed cattle marketed during October .....	1,685	1,630	97
Other disappearance during October .....	97	75	77
On feed November 1 .....	10,571	10,799	102

**Number of Cattle on Feed on 1,000+ Capacity Feedlots by Month – States and United States: 2014 and 2015**

State	December 1, 2014	November 1, 2015	December 1, 2015		
			Number	Percent of previous year	Percent of previous month
	(1,000 head)	(1,000 head)	(1,000 head)	(percent)	(percent)
Arizona .....	252	243	247	98	102
California .....	435	455	455	105	100
Colorado .....	910	880	890	98	101
Idaho .....	220	230	235	107	102
Iowa .....	620	640	630	102	98
Kansas .....	2,100	2,150	2,140	102	100
Minnesota .....	134	151	152	113	101
Nebraska .....	2,530	2,450	2,490	98	102
Oklahoma .....	260	270	275	106	102
South Dakota .....	235	240	245	104	102
Texas .....	2,560	2,570	2,510	98	98
Washington .....	225	205	205	91	100
Other States .....	335	315	320	96	102
United States .....	10,816	10,799	10,794	100	100

**Cattle on Feed Inventory on 1,000+ Capacity Feedlots – United States**

Million head

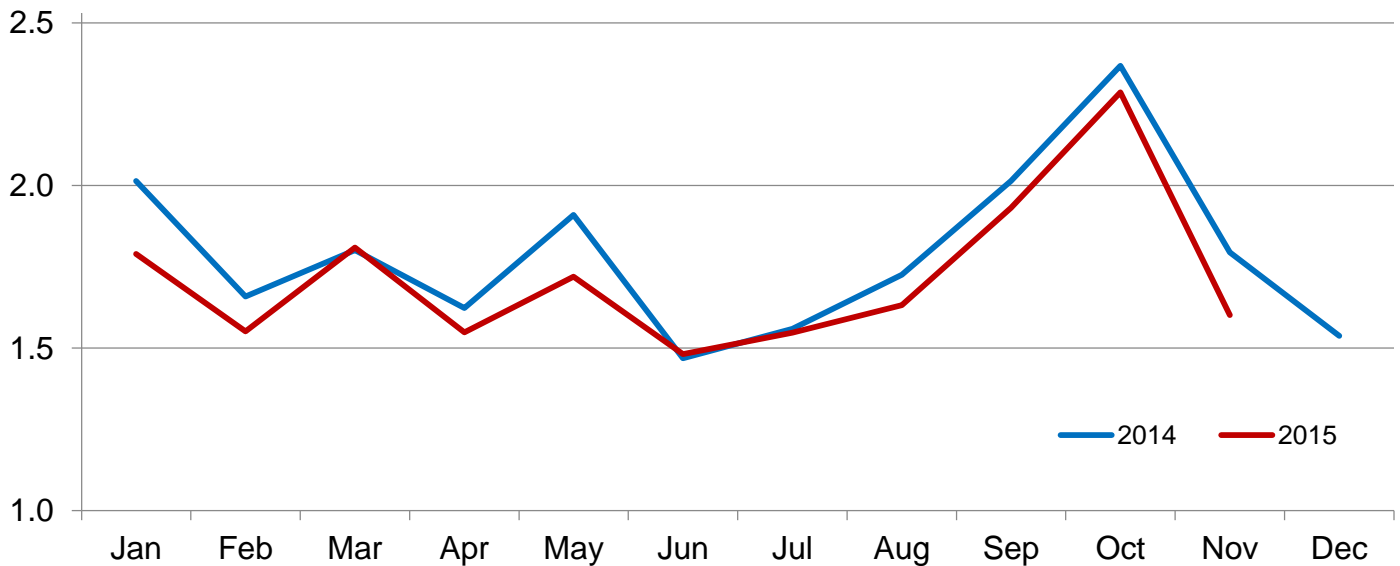


**Number of Cattle Placed on Feed on 1,000+ Capacity Feedlots by Month – States and United States: 2014 and 2015**

State	During November 2014 (1,000 head)	During October 2015 (1,000 head)	During November 2015		
			Number (1,000 head)	Percent of previous year (percent)	Percent of previous month (percent)
Arizona .....	26	23	26	100	113
California .....	62	38	50	81	132
Colorado .....	155	195	140	90	72
Idaho .....	43	58	42	98	72
Iowa .....	127	156	101	80	65
Kansas .....	320	445	305	95	69
Minnesota .....	15	30	13	87	43
Nebraska .....	475	645	440	93	68
Oklahoma .....	45	61	45	100	74
South Dakota .....	53	75	45	85	60
Texas .....	385	460	315	82	68
Washington .....	49	50	43	88	86
Other States .....	39	50	36	92	72
United States .....	1,794	2,286	1,601	89	70

**Number of Cattle Placed on 1,000+ Capacity Feedlots – United States**

Million head



**Number of Cattle Placed on Feed by Weight Group on 1,000+ Capacity Feedlots by Month – States and United States: 2014 and 2015**

State	During November									
	Under 600 lbs		600-699 lbs		700-799 lbs		800+ lbs		Total	
	2014	2015	2014	2015	2014	2015	2014	2015	2014	2015
	(1,000 head)	(1,000 head)	(1,000 head)	(1,000 head)	(1,000 head)	(1,000 head)	(1,000 head)	(1,000 head)	(1,000 head)	(1,000 head)
Colorado .....	45	35	40	35	30	30	40	40	155	140
Kansas .....	65	55	75	70	95	85	85	95	320	305
Nebraska .....	120	115	115	110	85	60	155	155	475	440
Texas .....	160	110	95	80	80	75	50	50	385	315
Other States .....	165	155	110	96	79	60	105	90	459	401
United States .....	555	470	435	391	369	310	435	430	1,794	1,601

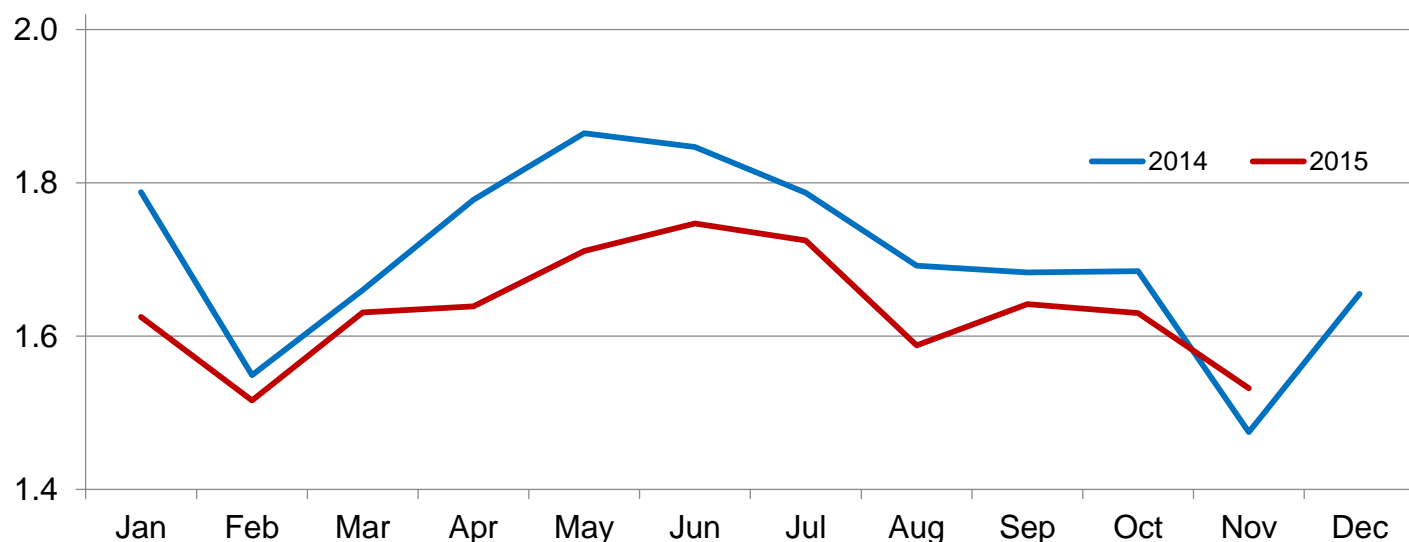
State	During October									
	Under 600 lbs		600-699 lbs		700-799 lbs		800+ lbs		Total	
	2014	2015	2014	2015	2014	2015	2014	2015	2014	2015
	(1,000 head)	(1,000 head)	(1,000 head)	(1,000 head)	(1,000 head)	(1,000 head)	(1,000 head)	(1,000 head)	(1,000 head)	(1,000 head)
Colorado .....	55	55	45	45	45	30	65	65	210	195
Kansas .....	85	80	100	100	115	115	120	150	420	445
Nebraska .....	170	170	165	155	95	80	230	240	660	645
Texas .....	180	145	130	110	130	130	80	75	520	460
Other States .....	205	195	130	120	78	76	145	150	558	541
United States .....	695	645	570	530	463	431	640	680	2,368	2,286

**Number of Cattle Marketed on 1,000+ Capacity Feedlots by Month – States and United States: 2014 and 2015**

State	During November 2014	During October 2015	During November 2015		
			Number	Percent of previous year	Percent of previous month
			(1,000 head)	(percent)	(percent)
Arizona .....	19	19	21	111	111
California .....	43	38	45	105	118
Colorado .....	120	140	125	104	89
Idaho .....	32	47	36	113	77
Iowa .....	95	113	107	113	95
Kansas .....	285	300	295	104	98
Minnesota .....	11	16	11	100	69
Nebraska .....	370	445	385	104	87
Oklahoma .....	43	45	39	91	87
South Dakota .....	34	39	38	112	97
Texas .....	360	360	360	100	100
Washington .....	37	39	42	114	108
Other States .....	26	29	28	108	97
United States .....	1,475	1,630	1,532	104	94

# Number of Cattle Marketed on 1,000+ Capacity Feedlots – United States

Million head



## Other Disappearance on 1,000+ Capacity Feedlots by Month – States and United States: 2014 and 2015

State	During November 2014 (1,000 head)	During October 2015 (1,000 head)	During November 2015		
			Number (1,000 head)	Percent of previous year (percent)	Percent of previous month (percent)
Arizona .....	5	1	1	20	100
California .....	4	5	5	125	100
Colorado .....	5	5	5	100	100
Idaho .....	1	1	1	100	100
Iowa .....	2	3	4	200	133
Kansas .....	15	15	20	133	133
Minnesota .....	1	1	1	100	100
Nebraska .....	15	20	15	100	75
Oklahoma .....	2	1	1	50	100
South Dakota .....	4	1	2	50	200
Texas .....	15	20	15	100	75
Washington .....	2	1	1	50	100
Other States .....	3	1	3	100	300
United States .....	74	75	74	100	99

## Terms and Definitions of Cattle on Feed Estimates

**Cattle on feed** are steers and heifers being fed a ration of grain, silage, hay and/or protein supplement for slaughter market that are expected to produce a carcass that will grade select or better. It excludes cattle being "backgrounded only" for later sale as feeders or later placement in another feedlot.

**Placements** are steers and heifers put into a feedlot, fed a ration which will produce a carcass that will grade select or better, and are intended for the slaughter market.

**Marketings** are steers and heifers shipped out of feedlots to a slaughter market.

**Other disappearance** includes death loss, movement from feedlots to pasture, and shipments to other feedlots for further feeding.

## Reliability of Cattle on Feed Estimates

**Survey Procedures:** During January and July all known feedlots in the United States with capacity of 1,000 or more head are surveyed to provide data for cattle on feed estimates. During the other months, all known feedlots from 16 States are surveyed. The 16 States account for approximately 98 percent of the cattle on feed in feedlots with capacity of 1,000 or more head. Individual State estimates are published monthly for 12 of the 16 States. Data collected from the remaining 4 States are used to establish the "Other States" estimates. These 4 States include Illinois, New Mexico, Oregon, and Wyoming. The "Other States" category represents all cattle on feed with a capacity of 1,000 or more head for the rest of the United States.

**Estimating Procedures:** These cattle on feed estimates were prepared by the Agricultural Statistics Board after reviewing recommendations and analysis submitted by each State office. Regional and State survey data were reviewed for reasonableness with each other and with estimates from the previous month when establishing the current estimates.

**Revision Policy:** Revisions to previous estimates are made to improve month to month relationships. Estimates for the previous month are subject to revision in all States each month when current estimates are made. In February, all monthly estimates for the previous year, and the number of feedlots and annual marketings from two years ago are reviewed and subject to revisions. The reviews are primarily based on slaughter data, state check-off or brand data, and any other data that may have been received after the original estimate was made. Estimates will also be reviewed after data from the Census of Agriculture are available. No revisions will be made after that date and estimates become final.

**Reliability:** Since all 1,000+ capacity cattle on feed operators in every State are not included in the monthly survey, survey estimates are subject to sampling variability. Survey results are also subject to non-sampling errors such as omissions, duplications, and mistakes in reporting, recording, and processing the data. The effects of these errors cannot be measured directly. They are minimized through rigid quality controls in the data collection process and through a careful review of all reported data for consistency and reasonableness.

To assist users in evaluating the reliability of estimates in this report, the "**Root Mean Square Error**" is shown for selected items in the table on the following page. The "Root Mean Square Error" is a statistical measure based on past performance and is computed using the differences between first and latest estimates. The "Root Mean Square Error" for cattle on feed inventory estimates over the past 24 months is 0.5 percent. This means that chances are 2 out of 3 that the final estimate will not be above or below the current estimate of 10.8 million head by more than 0.5 percent. Chances are 9 out of 10 that the difference will not exceed 0.9 percent.

The table on the following page shows a 24 month record of the range of differences between first and latest estimates for selected items. Using estimates of number on feed as an example, changes between the first estimate and the latest estimate during the past 24 months have averaged 43,000 head, ranging from 0 to 97,000 head. During this period the initial estimate has been above the latest estimate 13 times and has been below the latest estimate 5 times. This does not imply that the initial estimate is likely to understate or overstate final inventory.

## Reliability of Monthly Cattle on Feed Estimates

[Based on data for the past 24 months]

Item	Root mean square error	90 percent confidence level	Difference between first and latest estimate				
			Average	Smallest	Largest	Months	
						Below latest	Above latest
	(percent)	(percent)	(1,000)	(1,000)	(1,000)	(number)	(number)
Number on feed .....	0.5	0.9	43	0	97	5	13
Placements .....	0.7	1.2	8	0	29	12	6
Marketings .....	0.3	0.4	1	0	21	0	1

## Information Contacts

Listed below are the commodity specialists in the Livestock Branch of the National Agricultural Statistics Service to contact for additional information. E-mail inquiries may be sent to [nass@nass.usda.gov](mailto:nass@nass.usda.gov).

Dan Kerestes, Chief, Livestock Branch .....	(202) 720-3570
Scott Hollis, Head, Livestock Section .....	(202) 690-2424
Sherry Bertramsen – Livestock Slaughter .....	(202) 720-3240
Doug Bounds – Hogs and Pigs .....	(202) 720-3106
David Colwell – Sheep and Goats .....	(202) 720-8784
Donnie Fike – Dairy Products .....	(202) 690-3236
Michael Klamm – Cattle, Cattle on Feed .....	(202) 720-3040
Mike Miller – Milk Production and Milk Cows .....	(202) 720-3278



## Access to NASS Reports

For your convenience, you may access NASS reports and products the following ways:

- All reports are available electronically, at no cost, on the NASS web site: <http://www.nass.usda.gov>
- Both national and state specific reports are available via a free e-mail subscription. To set-up this free subscription, visit <http://www.nass.usda.gov> and click on “National” or “State” in upper right corner above “search” box to create an account and select the reports you would like to receive.

For more information on NASS surveys and reports, call the NASS Agricultural Statistics Hotline at (800) 727-9540, 7:30 a.m. to 4:00 p.m. ET, or e-mail: [nass@nass.usda.gov](mailto:nass@nass.usda.gov).

The U.S. Department of Agriculture (USDA) prohibits discrimination against its customers, employees, and applicants for employment on the basis of race, color, national origin, age, disability, sex, gender identity, religion, reprisal, and where applicable, political beliefs, marital status, familial or parental status, sexual orientation, or all or part of an individual's income is derived from any public assistance program, or protected genetic information in employment or in any program or activity conducted or funded by the Department. (Not all prohibited bases will apply to all programs and/or employment activities.)

If you wish to file a Civil Rights program complaint of discrimination, complete the [USDA Program Discrimination Complaint Form](#) (PDF), found online at [http://www.ascr.usda.gov/complaint\\_filing\\_cust.html](http://www.ascr.usda.gov/complaint_filing_cust.html), or at any USDA office, or call (866) 632-9992 to request the form. You may also write a letter containing all of the information requested in the form. Send your completed complaint form or letter to us by mail at U.S. Department of Agriculture, Director, Office of Adjudication, 1400 Independence Avenue, S.W., Washington, D.C. 20250-9410, by fax (202) 690-7442 or email at [program.intake@usda.gov](mailto:program.intake@usda.gov).