



Cattle on Feed

ISSN: 1948-9080

Released July 22, 2016, by the National Agricultural Statistics Service (NASS), Agricultural Statistics Board, United States Department of Agriculture (USDA).

United States Cattle on Feed Up 1 Percent

Cattle and calves on feed for the slaughter market in the United States for feedlots with capacity of 1,000 or more head totaled 10.4 million head on July 1, 2016. The inventory was 1 percent above July 1, 2015. The inventory included 6.87 million steers and steer calves, down 1 percent from the previous year. This group accounted for 66 percent of the total inventory. Heifers and heifer calves accounted for 3.49 million head, up 5 percent from 2015.

Placements in feedlots during June totaled 1.53 million head, 3 percent above 2015. Net placements were 1.46 million head. During June, placements of cattle and calves weighing less than 600 pounds were 290,000 head, 600-699 pounds were 255,000 head, 700-799 pounds were 340,000 head, and 800 pounds and greater were 640,000 head.

Marketings of fed cattle during June totaled 1.91 million head, 9 percent above 2015.

Other disappearance totaled 61,000 head during June, 12 percent below 2015.

Number of Cattle on Feed, Placements, Marketings, and Other Disappearance on 1,000+ Capacity Feedlots – United States: July 1, 2015 and 2016

Item	Number		Percent of previous year
	2015	2016	
	(1,000 head)	(1,000 head)	(percent)
On feed June 1	10,571	10,804	102
Placed on feed during June	1,481	1,525	103
Fed cattle marketed during June	1,747	1,912	109
Other disappearance during June	69	61	88
On feed July 1	10,236	10,356	101

Number of Cattle on Feed, Placements, Marketings, and Other Disappearance on 1,000+ Capacity Feedlots – United States: June 1, 2015 and 2016

Item	Number		Percent of previous year
	2015	2016	
	(1,000 head)	(1,000 head)	(percent)
On feed May 1	10,640	10,783	101
Placed on feed during May	1,719	1,889	110
Fed cattle marketed during May	1,711	1,794	105
Other disappearance during May	77	74	96
On feed June 1	10,571	10,804	102

Number on Feed by Class on 1,000+ Capacity Feedlots – United States: July 1, 2015 and 2016

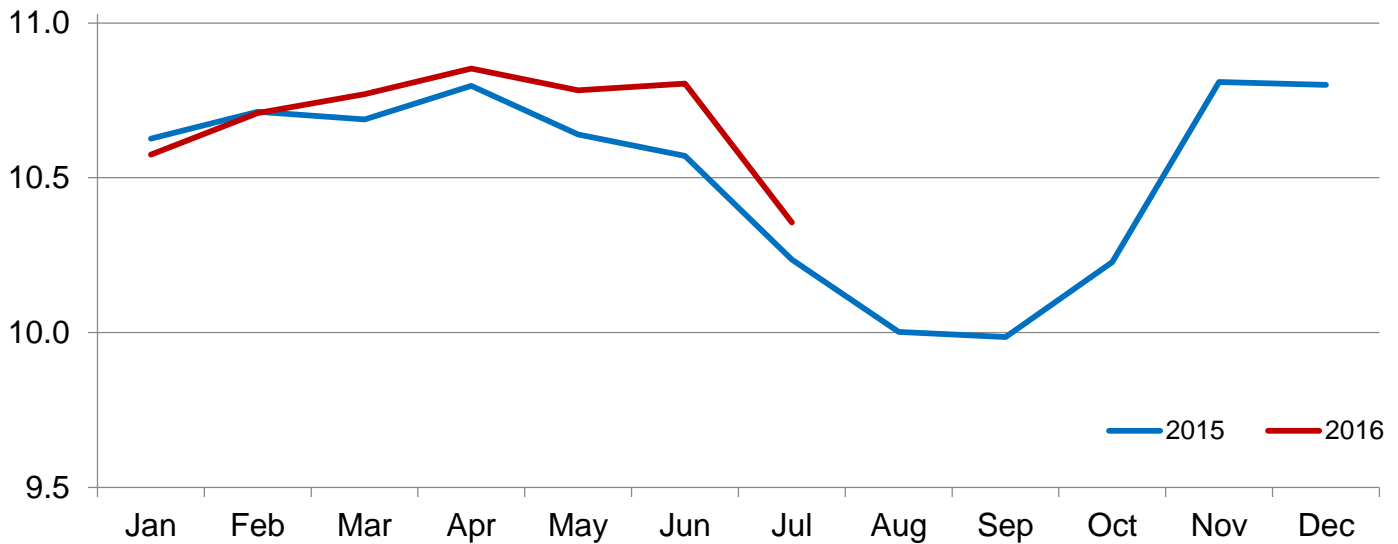
Item	Number		Percent of	
	2015	2016	previous year	inventory
	(1,000 Head)	(1,000 Head)	(percent)	(percent)
Class on feed July 1				
Steers and steer calves	6,909	6,869	99	66
Heifers and heifer calves	3,327	3,487	105	34

Number of Cattle on Feed on 1,000+ Capacity Feedlots by Month – States and United States: 2015 and 2016

State	July 1, 2015	June 1, 2016	July 1, 2016		
			Number	Percent of previous year	Percent of previous month
	(1,000 head)	(1,000 head)	(1,000 head)	(percent)	(percent)
Arizona	240	300	286	119	95
California	460	415	425	92	102
Colorado	830	890	850	102	96
Idaho	225	245	235	104	96
Iowa	640	630	610	95	97
Kansas	1,940	2,160	2,050	106	95
Minnesota	141	154	145	103	94
Nebraska	2,280	2,340	2,180	96	93
Oklahoma	260	320	310	119	97
South Dakota	230	250	235	102	94
Texas	2,480	2,610	2,550	103	98
Washington	215	195	195	91	100
Other States	295	295	285	97	97
United States	10,236	10,804	10,356	101	96

Cattle on Feed Inventory on 1,000+ Capacity Feedlots – United States

Million head

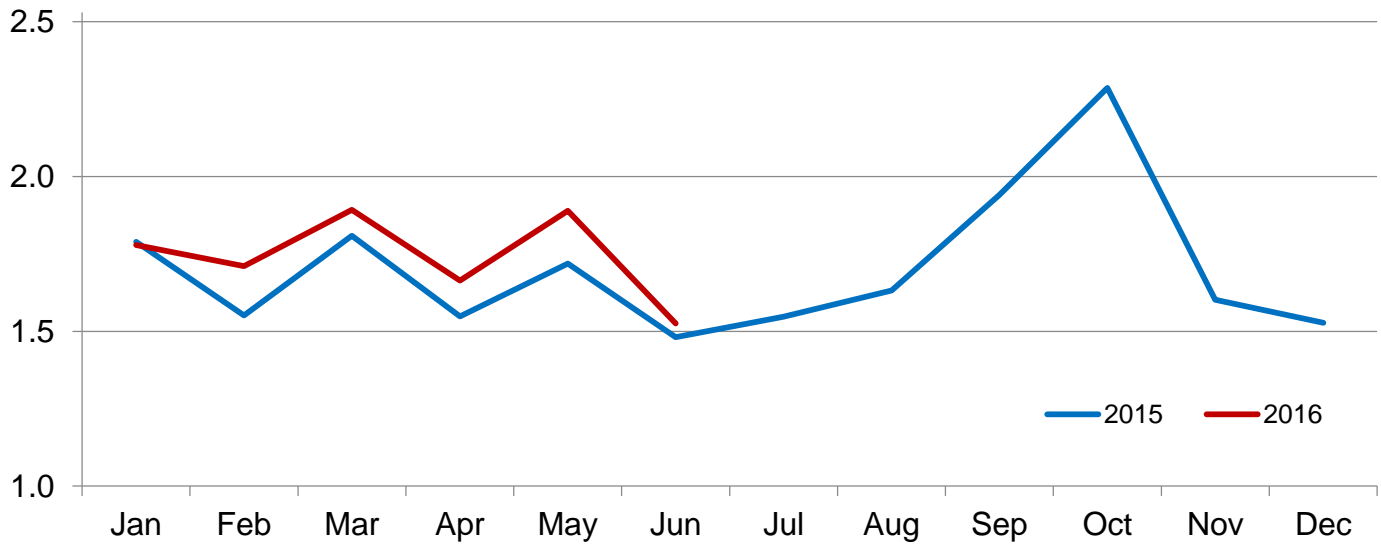


Number of Cattle Placed on Feed on 1,000+ Capacity Feedlots by Month – States and United States: 2015 and 2016

State	During June 2015	During May 2016	During June 2016		
			Number	Percent of previous year	Percent of previous month
	(1,000 head)	(1,000 head)	(1,000 head)	(percent)	(percent)
Arizona	28	19	19	68	100
California	45	54	58	129	107
Colorado	80	135	105	131	78
Idaho	31	41	38	123	93
Iowa	67	64	54	81	84
Kansas	335	420	350	104	83
Minnesota	17	14	12	71	86
Nebraska	375	405	365	97	90
Oklahoma	38	68	42	111	62
South Dakota	28	29	24	86	83
Texas	375	560	380	101	68
Washington	30	48	41	137	85
Other States	32	32	37	116	116
United States	1,481	1,889	1,525	103	81

Number of Cattle Placed on 1000+ Capacity Feedlots – United States

Million head



Number of Cattle Placed on Feed by Weight Group on 1,000+ Capacity Feedlots by Month – States and United States: 2015 and 2016

State	During June									
	Under 600 lbs		600-699 lbs		700-799 lbs		800+ lbs		Total	
	2015	2016	2015	2016	2015	2016	2015	2016	2015	2016
	(1,000 head)	(1,000 head)	(1,000 head)	(1,000 head)	(1,000 head)	(1,000 head)	(1,000 head)	(1,000 head)	(1,000 head)	(1,000 head)
Colorado	20	15	15	15	15	30	30	45	80	105
Kansas	60	55	65	65	95	90	115	140	335	350
Nebraska	50	30	50	50	75	70	200	215	375	365
Texas	125	115	80	85	95	90	75	90	375	380
Other States	95	75	40	40	56	60	125	150	316	325
United States	350	290	250	255	336	340	545	640	1,481	1,525

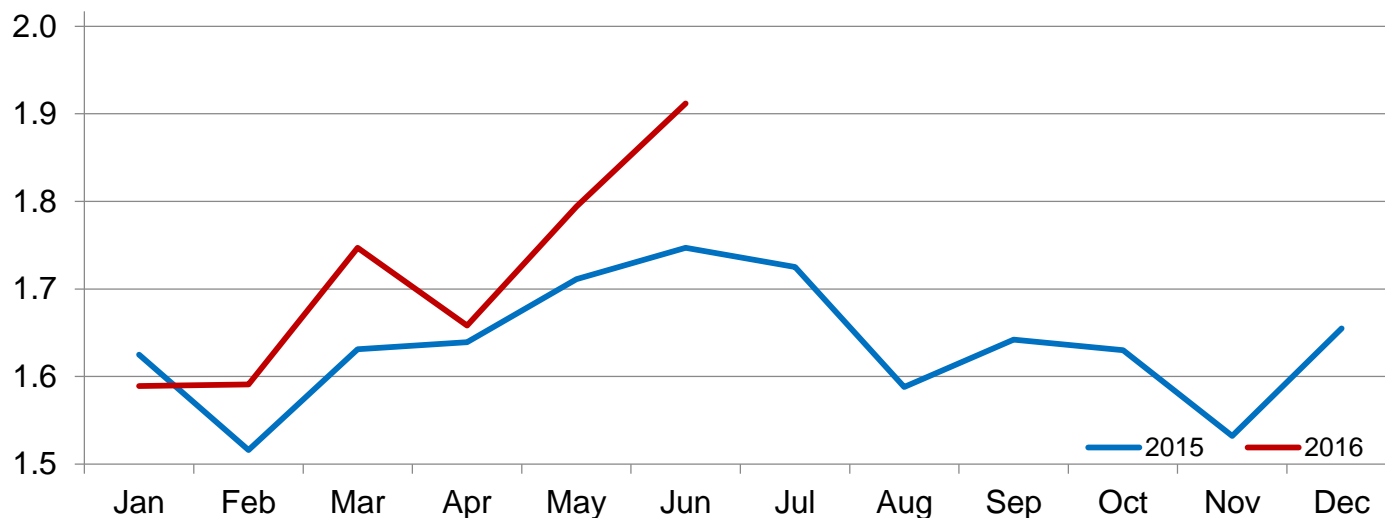
State	During May									
	Under 600 lbs		600-699 lbs		700-799 lbs		800+ lbs		Total	
	2015	2016	2015	2016	2015	2016	2015	2016	2015	2016
	(1,000 head)	(1,000 head)	(1,000 head)	(1,000 head)	(1,000 head)	(1,000 head)	(1,000 head)	(1,000 head)	(1,000 head)	(1,000 head)
Colorado	30	20	20	20	35	35	55	60	140	135
Kansas	50	50	55	55	90	120	150	195	345	420
Nebraska	45	40	55	50	75	85	215	230	390	405
Texas	145	115	90	85	125	170	135	190	495	560
Other States	90	85	40	40	64	69	155	175	349	369
United States	360	310	260	250	389	479	710	850	1,719	1,889

Number of Cattle Marketed on 1,000+ Capacity Feedlots by Month – States and United States: 2015 and 2016

State	During June 2015 (1,000 head)	During May 2016 (1,000 head)	During June 2016		
			Number	Percent of previous year	Percent of previous month
			(1,000 head)	(percent)	(percent)
Arizona	25	21	27	108	129
California	40	50	45	113	90
Colorado	125	130	140	112	108
Idaho	40	35	47	118	134
Iowa	76	72	72	95	100
Kansas	400	400	450	113	113
Minnesota	18	17	20	111	118
Nebraska	480	465	510	106	110
Oklahoma	52	47	51	98	109
South Dakota	26	40	36	138	90
Texas	385	430	430	112	100
Washington	44	46	40	91	87
Other States	36	41	44	122	107
United States	1,747	1,794	1,912	109	107

Number of Cattle Marketed on 1,000+ Capacity Feedlots – United States

Million head



Other Disappearance on 1,000+ Capacity Feedlots by Month – States and United States: 2015 and 2016

State	During June 2015 (1,000 head)	During May 2016 (1,000 head)	During June 2016		
			Number (1,000 head)	Percent of previous year (percent)	Percent of previous month (percent)
Arizona	1	3	6	600	200
California	5	4	3	60	75
Colorado	15	15	5	33	33
Idaho	1	1	1	100	100
Iowa	1	2	2	200	100
Kansas	15	10	10	67	100
Minnesota	1	1	1	100	100
Nebraska	15	20	15	100	75
Oklahoma	1	1	1	100	100
South Dakota	2	4	3	150	75
Texas	10	10	10	100	100
Washington	1	2	1	100	50
Other States	1	1	3	300	300
United States	69	74	61	88	82

**Number on Feed by Class on 1,000+ Capacity Feedlots by Quarter – States and United States:
2015 and 2016**

State	Steers and steer calves			Heifers and heifer calves		
	Jul 1, 2015	Apr 1, 2016	Jul 1, 2016	Jul 1, 2015	Apr 1, 2016	Jul 1, 2016
	(1,000 Head)	(1,000 Head)	(1,000 Head)	(1,000 Head)	(1,000 Head)	(1,000 Head)
Arizona	236	294	280	4	9	6
California	425	400	380	35	20	45
Colorado	560	610	550	270	290	300
Idaho	150	165	155	75	75	80
Iowa	490	460	440	150	180	170
Kansas	1,030	1,200	1,070	910	980	980
Minnesota	126	139	124	15	21	21
Nebraska	1,570	1,620	1,430	710	820	750
Oklahoma	190	185	195	70	110	115
South Dakota	142	153	140	88	112	95
Texas	1,650	1,800	1,780	830	700	770
Washington	135	125	125	80	70	70
Other States	205	210	200	90	105	85
United States	6,909	7,361	6,869	3,327	3,492	3,487

Terms and Definitions of Cattle on Feed Estimates

Cattle on feed are steers and heifers being fed a ration of grain, silage, hay and/or protein supplement for slaughter market that are expected to produce a carcass that will grade select or better. It excludes cattle being "backgrounded only" for later sale as feeders or later placement in another feedlot.

Placements are steers and heifers put into a feedlot, fed a ration which will produce a carcass that will grade select or better, and are intended for the slaughter market.

Marketings are steers and heifers shipped out of feedlots to a slaughter market.

Other disappearance includes death loss, movement from feedlots to pasture, and shipments to other feedlots for further feeding.

Statistical Methodology

Survey Procedures: During January and July all known feedlots in the United States with capacity of 1,000 or more head are surveyed to provide data for cattle on feed estimates. During the other months, all known feedlots from 16 States are surveyed. The 16 States account for approximately 98 percent of the cattle on feed in feedlots with capacity of 1,000 or more head. Individual State estimates are published monthly for 12 of the 16 States. Data collected from the remaining 4 States are used to establish the "Other States" estimates. These 4 States include Illinois, New Mexico, Oregon, and Wyoming. The "Other States" category represents all cattle on feed with a capacity of 1,000 or more head for the rest of the United States.

Estimating Procedures: These cattle on feed estimates were prepared by the Agricultural Statistics Board after reviewing recommendations and analysis submitted by Regional Field Offices. Regional and State survey data were reviewed for reasonableness with each other and with estimates from the previous month when establishing the current estimates.

Revision Policy: Revisions to previous estimates are made to improve month to month relationships. Estimates for the previous month are subject to revision in all States each month when current estimates are made. In February, all monthly estimates for the previous year, and the number of feedlots and annual marketings from two years ago are reviewed and subject to revisions. The reviews are primarily based on slaughter data, state check-off or brand data, and any other data that may have been received after the original estimate was made. Estimates will also be reviewed after data from the *Census of Agriculture* are available. No revisions will be made after that date and estimates become final.

Reliability: Since all 1,000+ capacity cattle on feed operators in every State are not included in the monthly survey, survey estimates are subject to sampling variability. Survey results are also subject to non-sampling errors such as omissions, duplications, and mistakes in reporting, recording, and processing the data. The effects of these errors cannot be measured directly. They are minimized through rigid quality controls in the data collection process and through a careful review of all reported data for consistency and reasonableness.

To assist users in evaluating the reliability of estimates in this report, the "**Root Mean Square Error**" is shown for selected items in the table on the following page. The "Root Mean Square Error" is a statistical measure based on past performance and is computed using the differences between first and latest estimates. The "Root Mean Square Error" for cattle on feed inventory estimates over the past 24 months is 0.4 percent. This means that chances are 2 out of 3 that the final estimate will not be above or below the current estimate of 10.4 million head by more than 0.4 percent. Chances are 9 out of 10 that the difference will not exceed 0.7 percent.

The table on the following page shows a 24 month record of the range of differences between first and latest estimates for selected items. Using estimates of number on feed as an example, changes between the first estimate and the latest estimate during the past 24 months have averaged 22,000 head, ranging from 0 to 85,000 head. During this period the initial estimate has been above the latest estimate 6 times and has been below the latest estimate 9 times. This does not imply that the initial estimate is likely to understate or overstate final inventory.

Reliability of Monthly Cattle on Feed Estimates

[Based on data for the past 24 months]

Item	Root mean square error	90 percent confidence level	Difference between first and latest estimate				
			Average	Smallest	Largest	Months	
						Below latest	Above latest
	(percent)	(percent)	(1,000)	(1,000)	(1,000)	(number)	(number)
Number on feed	0.4	0.7	22	0	85	9	6
Placements	0.5	0.8	4	0	28	14	1
Marketings	0.0	0.0	0	0	0	0	0

Information Contacts

Listed below are the commodity specialists in the Livestock Branch of the National Agricultural Statistics Service to contact for additional information. E-mail inquiries may be sent to nass@nass.usda.gov.

Dan Kerestes, Chief, Livestock Branch	(202) 720-3570
Scott Hollis, Head, Livestock Section	(202) 690-2424
Sherry Bertramsen – Livestock Slaughter	(202) 720-3240
Doug Bounds – Hogs and Pigs	(202) 720-3106
David Colwell – Sheep and Goats	(202) 720-8784
Donnie Fike – Dairy Products	(202) 690-3236
Michael Klamm – Cattle, Cattle on Feed	(202) 720-3040
Mike Miller – Milk Production and Milk Cows	(202) 720-3278

Access to NASS Reports

For your convenience, you may access NASS reports and products the following ways:

- All reports are available electronically, at no cost, on the NASS web site: www.nass.usda.gov
- Both national and state specific reports are available via a free e-mail subscription. To set-up this free subscription, visit www.nass.usda.gov and click on “National” or “State” in upper right corner above “search” box to create an account and select the reports you would like to receive.

For more information on NASS surveys and reports, call the NASS Agricultural Statistics Hotline at (800) 727-9540, 7:30 a.m. to 4:00 p.m. ET, or e-mail: nass@nass.usda.gov.

The U.S. Department of Agriculture (USDA) prohibits discrimination against its customers, employees, and applicants for employment on the basis of race, color, national origin, age, disability, sex, gender identity, religion, reprisal, and where applicable, political beliefs, marital status, familial or parental status, sexual orientation, or all or part of an individual's income is derived from any public assistance program, or protected genetic information in employment or in any program or activity conducted or funded by the Department. (Not all prohibited bases will apply to all programs and/or employment activities.)

If you wish to file a Civil Rights program complaint of discrimination, complete the [USDA Program Discrimination Complaint Form](#) (PDF), found online at http://www.ascr.usda.gov/complaint_filing_cust.html, or at any USDA office, or call (866) 632-9992 to request the form. You may also write a letter containing all of the information requested in the form. Send your completed complaint form or letter to us by mail at U.S. Department of Agriculture, Director, Office of Adjudication, 1400 Independence Avenue, S.W., Washington, D.C. 20250-9410, by fax (202) 690-7442 or email at program.intake@usda.gov.