



Cattle on Feed

ISSN: 1948-9080

Released September 23, 2016, by the National Agricultural Statistics Service (NASS), Agricultural Statistics Board, United States Department of Agriculture (USDA).

United States Cattle on Feed Up 1 Percent

Cattle and calves on feed for the slaughter market in the United States for feedlots with capacity of 1,000 or more head totaled 10.1 million head on September 1, 2016. The inventory was 1 percent above September 1, 2015.

Placements in feedlots during August totaled 1.88 million head, 15 percent above 2015. Net placements were 1.84 million head. During August, placements of cattle and calves weighing less than 600 pounds were 360,000 head, 600-699 pounds were 290,000 head, 700-799 pounds were 429,000 head, and 800 pounds and greater were 800,000 head.

Marketings of fed cattle during August totaled 1.87 million head, 18 percent above 2015.

Other disappearance totaled 41,000 head during August, 32 percent below 2015.

Number of Cattle on Feed, Placements, Marketings, and Other Disappearance on 1,000+ Capacity Feedlots – United States: September 1, 2015 and 2016

Item	Number		Percent of previous year
	2015	2016	
	(1,000 head)	(1,000 head)	(percent)
On feed August 1	10,002	10,165	102
Placed on feed during August	1,632	1,879	115
Fed cattle marketed during August	1,588	1,868	118
Other disappearance during August	60	41	68
On feed September 1	9,986	10,135	101

Number of Cattle on Feed, Placements, Marketings, and Other Disappearance on 1,000+ Capacity Feedlots – United States: August 1, 2015 and 2016

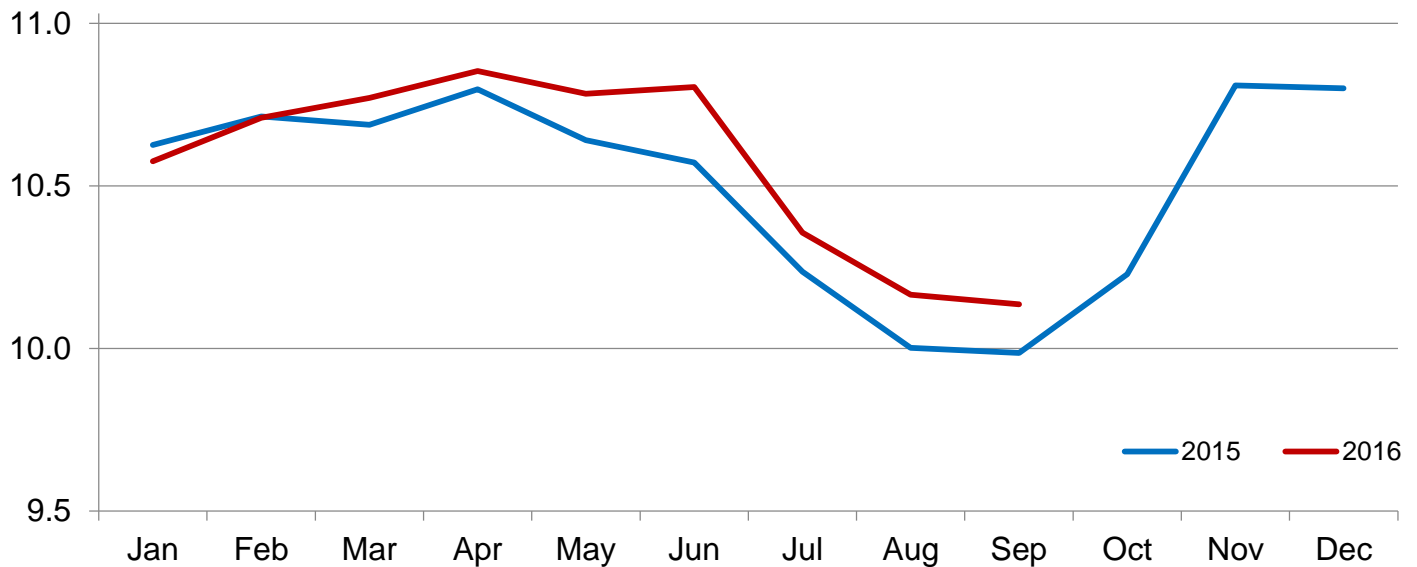
Item	Number		Percent of previous year
	2015	2016	
	(1,000 head)	(1,000 head)	(percent)
On feed July 1	10,236	10,356	101
Placed on feed during July	1,547	1,572	102
Fed cattle marketed during July	1,725	1,713	99
Other disappearance during July	56	50	89
On feed August 1	10,002	10,165	102

Number of Cattle on Feed on 1,000+ Capacity Feedlots by Month – States and United States: 2015 and 2016

State	September 1, 2015	August 1, 2016	September 1, 2016		
			Number	Percent of previous year	Percent of previous month
	(1,000 head)	(1,000 head)	(1,000 head)	(percent)	(percent)
Arizona	241	282	271	112	96
California	455	410	405	89	99
Colorado	780	810	800	103	99
Idaho	215	230	225	105	98
Iowa	620	600	580	94	97
Kansas	1,950	2,110	2,170	111	103
Minnesota	140	133	119	85	89
Nebraska	2,200	2,090	2,100	95	100
Oklahoma	250	300	300	120	100
South Dakota	205	220	215	105	98
Texas	2,450	2,520	2,490	102	99
Washington	195	190	180	92	95
Other States	285	270	280	98	104
United States	9,986	10,165	10,135	101	100

Cattle on Feed Inventory on 1,000+ Capacity Feedlots – United States

Million head

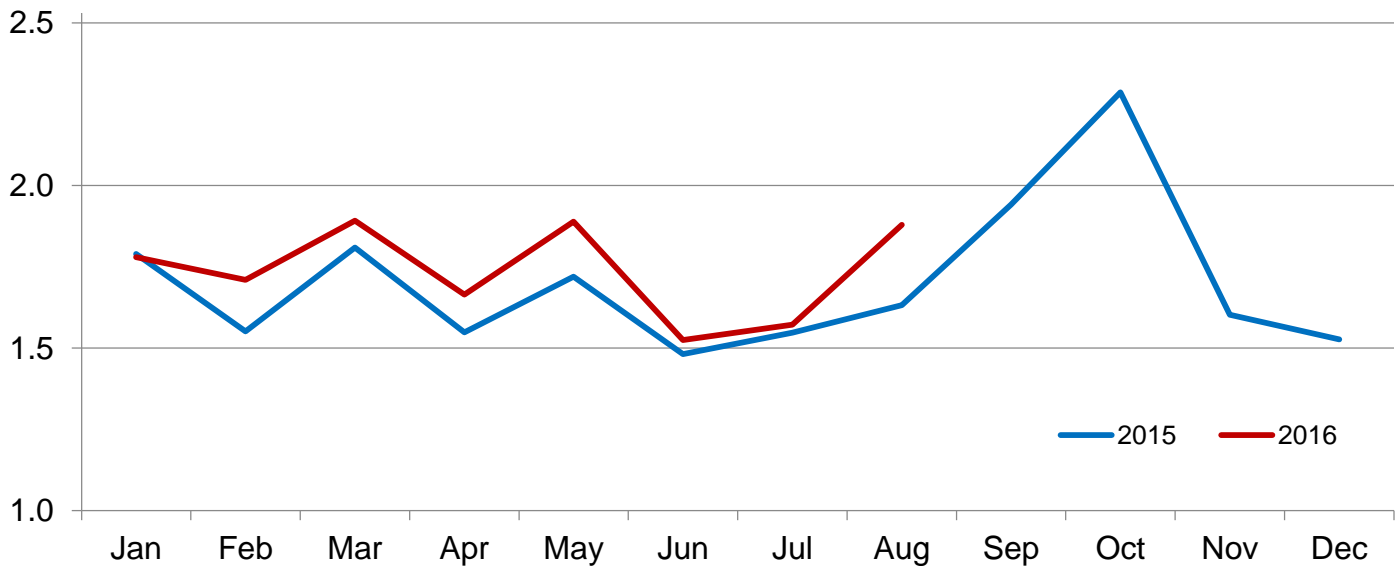


Number of Cattle Placed on Feed on 1,000+ Capacity Feedlots by Month – States and United States: 2015 and 2016

State	During August 2015	During July 2016	During August 2016		
			Number	Percent of previous year	Percent of previous month
	(1,000 head)	(1,000 head)	(1,000 head)	(percent)	(percent)
Arizona	21	20	14	67	70
California	41	35	40	98	114
Colorado	130	115	170	131	148
Idaho	36	34	45	125	132
Iowa	70	68	71	101	104
Kansas	370	445	485	131	109
Minnesota	22	9	15	68	167
Nebraska	410	350	465	113	133
Oklahoma	50	36	58	116	161
South Dakota	31	18	33	106	183
Texas	385	380	395	103	104
Washington	30	30	35	117	117
Other States	36	32	53	147	166
United States	1,632	1,572	1,879	115	120

Number of Cattle Placed on 1,000+ Capacity Feedlots – United States

Million head



Number of Cattle Placed on Feed by Weight Group on 1,000+ Capacity Feedlots by Month – States and United States: 2015 and 2016

State	During August									
	Under 600 lbs		600-699 lbs		700-799 lbs		800+ lbs		Total	
	2015	2016	2015	2016	2015	2016	2015	2016	2015	2016
	(1,000 head)	(1,000 head)	(1,000 head)	(1,000 head)	(1,000 head)	(1,000 head)	(1,000 head)	(1,000 head)	(1,000 head)	(1,000 head)
Colorado	20	25	10	20	30	35	70	90	130	170
Kansas	65	75	65	85	95	135	145	190	370	485
Nebraska	50	40	35	45	85	90	240	290	410	465
Texas	175	140	70	100	85	95	55	60	385	395
Other States	85	80	35	40	67	74	150	170	337	364
United States	395	360	215	290	362	429	660	800	1,632	1,879

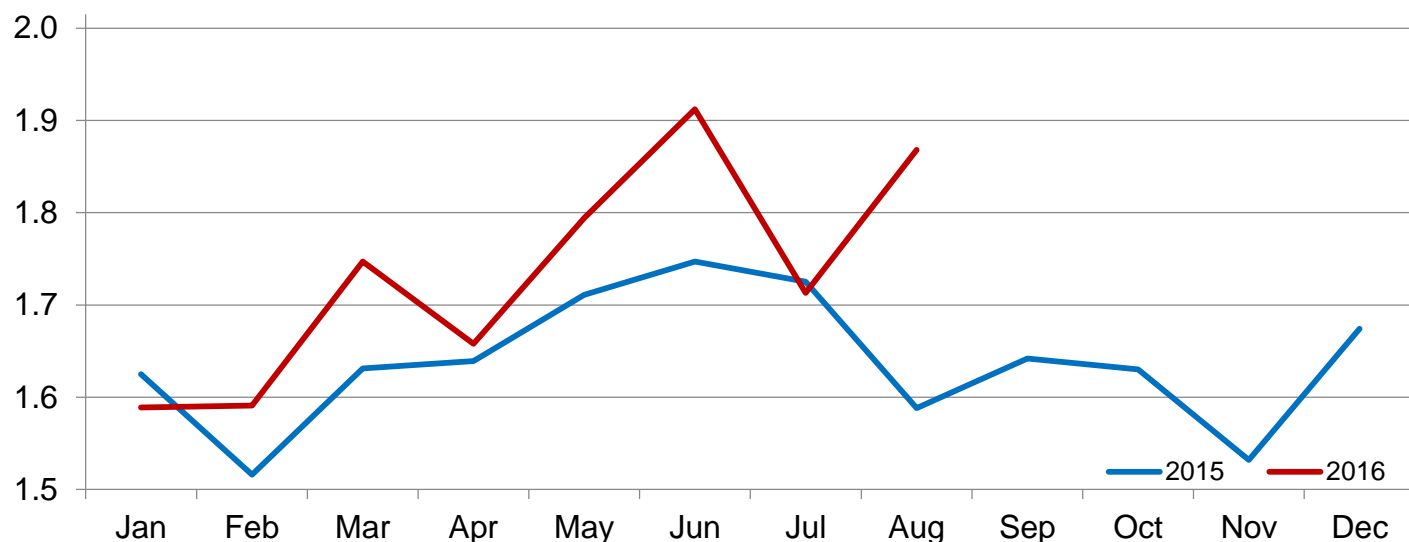
State	During July									
	Under 600 lbs		600-699 lbs		700-799 lbs		800+ lbs		Total	
	2015	2016	2015	2016	2015	2016	2015	2016	2015	2016
	(1,000 head)	(1,000 head)	(1,000 head)	(1,000 head)	(1,000 head)	(1,000 head)	(1,000 head)	(1,000 head)	(1,000 head)	(1,000 head)
Colorado	20	25	15	15	15	30	40	45	90	115
Kansas	65	65	70	75	115	130	145	175	395	445
Nebraska	40	30	50	35	85	70	215	215	390	350
Texas	155	155	70	80	65	75	75	70	365	380
Other States	85	77	30	30	47	55	145	120	307	282
United States	365	352	235	235	327	360	620	625	1,547	1,572

Number of Cattle Marketed on 1,000+ Capacity Feedlots by Month – States and United States: 2015 and 2016

State	During August 2015	During July 2016	During August 2016		
			Number	Percent of previous year	Percent of previous month
			(1,000 head)	(percent)	(percent)
Arizona	17	22	24	141	109
California	36	45	42	117	93
Colorado	135	150	175	130	117
Idaho	40	38	49	123	129
Iowa	77	76	90	117	118
Kansas	340	375	415	122	111
Minnesota	14	20	28	200	140
Nebraska	400	430	450	113	105
Oklahoma	49	45	57	116	127
South Dakota	34	32	37	109	116
Texas	360	400	415	115	104
Washington	44	34	44	100	129
Other States	42	46	42	100	91
United States	1,588	1,713	1,868	118	109

Number of Cattle Marketed on 1,000+ Capacity Feedlots – United States

Million head



Other Disappearance on 1,000+ Capacity Feedlots by Month – States and United States: 2015 and 2016

State	During August 2015 (1,000 head)	During July 2016 (1,000 head)	During August 2016		
			Number (1,000 head)	Percent of previous year (percent)	Percent of previous month (percent)
Arizona	2	2	1	50	50
California	5	5	3	60	60
Colorado	5	5	5	100	100
Idaho	1	1	1	100	100
Iowa	3	2	1	33	50
Kansas	10	10	10	100	100
Minnesota	1	1	1	100	100
Nebraska	10	10	5	50	50
Oklahoma	1	1	1	100	100
South Dakota	2	1	1	50	100
Texas	15	10	10	67	100
Washington	1	1	1	100	100
Other States	4	1	1	25	100
United States	60	50	41	68	82

Terms and Definitions of Cattle on Feed Estimates

Cattle on feed are steers and heifers being fed a ration of grain, silage, hay and/or protein supplement for slaughter market that are expected to produce a carcass that will grade select or better. It excludes cattle being "backgrounded only" for later sale as feeders or later placement in another feedlot.

Placements are steers and heifers put into a feedlot, fed a ration which will produce a carcass that will grade select or better, and are intended for the slaughter market.

Marketings are steers and heifers shipped out of feedlots to a slaughter market.

Other disappearance includes death loss, movement from feedlots to pasture, and shipments to other feedlots for further feeding.

Statistical Methodology

Survey Procedures: During January and July all known feedlots in the United States with capacity of 1,000 or more head are surveyed to provide data for cattle on feed estimates. During the other months, all known feedlots from 16 States are surveyed. The 16 States account for approximately 98 percent of the cattle on feed in feedlots with capacity of 1,000 or more head. Individual State estimates are published monthly for 12 of the 16 States. Data collected from the remaining 4 States are used to establish the "Other States" estimates. These 4 States include Illinois, New Mexico, Oregon, and Wyoming. The "Other States" category represents all cattle on feed with a capacity of 1,000 or more head for the rest of the United States.

Estimating Procedures: These cattle on feed estimates were prepared by the Agricultural Statistics Board after reviewing recommendations and analysis submitted by Regional Field Offices. Regional and State survey data were reviewed for reasonableness with each other and with estimates from the previous month when establishing the current estimates.

Revision Policy: Revisions to previous estimates are made to improve month to month relationships. Estimates for the previous month are subject to revision in all States each month when current estimates are made. In February, all monthly estimates for the previous year, and the number of feedlots and annual marketings from two years ago are reviewed and subject to revisions. The reviews are primarily based on slaughter data, state check-off or brand data, and any other data that may have been received after the original estimate was made. Estimates will also be reviewed after data from the *Census of Agriculture* are available. No revisions will be made after that date and estimates become final.

Reliability: Since all 1,000+ capacity cattle on feed operators in every State are not included in the monthly survey, survey estimates are subject to sampling variability. Survey results are also subject to non-sampling errors such as omissions, duplications, and mistakes in reporting, recording, and processing the data. The effects of these errors cannot be measured directly. They are minimized through rigid quality controls in the data collection process and through a careful review of all reported data for consistency and reasonableness.

To assist users in evaluating the reliability of estimates in this report, the "**Root Mean Square Error**" is shown for selected items in the table on the following page. The "Root Mean Square Error" is a statistical measure based on past performance and is computed using the differences between first and latest estimates. The "Root Mean Square Error" for cattle on feed inventory estimates over the past 24 months is 0.3 percent. This means that chances are 2 out of 3 that the final estimate will not be above or below the current estimate of 10.1 million head by more than 0.3 percent. Chances are 9 out of 10 that the difference will not exceed 0.5 percent.

The table on the following page shows a 24 month record of the range of differences between first and latest estimates for selected items. Using estimates of number on feed as an example, changes between the first estimate and the latest estimate during the past 24 months have averaged 15,000 head, ranging from 0 to 80,000 head. During this period the initial estimate has been above the latest estimate 4 times and has been below the latest estimate 9 times. This does not imply that the initial estimate is likely to understate or overstate final inventory.

Reliability of Monthly Cattle on Feed Estimates

[Based on data for the past 24 months]

Item	Root mean square error	90 percent confidence level	Difference between first and latest estimate				
			Average	Smallest	Largest	Months	
						Below latest	Above latest
	(percent)	(percent)	(1,000)	(1,000)	(1,000)	(number)	(number)
Number on feed	0.3	0.5	15	0	80	9	4
Placements	0.4	0.8	4	0	28	13	0
Marketings	0.0	0.0	0	0	0	0	0

Information Contacts

Listed below are the commodity specialists in the Livestock Branch of the National Agricultural Statistics Service to contact for additional information. E-mail inquiries may be sent to nass@nass.usda.gov.

Dan Kerestes, Chief, Livestock Branch	(202) 720-3570
Scott Hollis, Head, Livestock Section	(202) 690-2424
Sherry Bertramsen – Livestock Slaughter	(202) 720-3240
Doug Bounds – Hogs and Pigs	(202) 720-3106
David Colwell – Sheep and Goats	(202) 720-8784
Donnie Fike – Dairy Products	(202) 690-3236
Michael Klamm – Cattle, Cattle on Feed	(202) 720-3040
Mike Miller – Milk Production and Milk Cows	(202) 720-3278

Access to NASS Reports

For your convenience, you may access NASS reports and products the following ways:

- All reports are available electronically, at no cost, on the NASS web site: www.nass.usda.gov
- Both national and state specific reports are available via a free e-mail subscription. To set-up this free subscription, visit www.nass.usda.gov and click on “National” or “State” in upper right corner above “search” box to create an account and select the reports you would like to receive.

For more information on NASS surveys and reports, call the NASS Agricultural Statistics Hotline at (800) 727-9540, 7:30 a.m. to 4:00 p.m. ET, or e-mail: nass@nass.usda.gov.

The U.S. Department of Agriculture (USDA) prohibits discrimination against its customers, employees, and applicants for employment on the basis of race, color, national origin, age, disability, sex, gender identity, religion, reprisal, and where applicable, political beliefs, marital status, familial or parental status, sexual orientation, or all or part of an individual's income is derived from any public assistance program, or protected genetic information in employment or in any program or activity conducted or funded by the Department. (Not all prohibited bases will apply to all programs and/or employment activities.)

If you wish to file a Civil Rights program complaint of discrimination, complete the [USDA Program Discrimination Complaint Form](#) (PDF), found online at http://www.ascr.usda.gov/complaint_filing_cust.html, or at any USDA office, or call (866) 632-9992 to request the form. You may also write a letter containing all of the information requested in the form. Send your completed complaint form or letter to us by mail at U.S. Department of Agriculture, Director, Office of Adjudication, 1400 Independence Avenue, S.W., Washington, D.C. 20250-9410, by fax (202) 690-7442 or email at program.intake@usda.gov.

USDA NASS Data Users' Meeting

Tuesday, October 18, 2016

Embassy Suites by Hilton Chicago Downtown Magnificent Mile
511 North Columbus Drive
Chicago, IL 60611
312-836-5900

USDA's National Agricultural Statistics Service will hold an open forum for users of U.S. domestic and international agriculture data. NASS is organizing the 2016 Data Users' Meeting in cooperation with five other USDA agencies – Agricultural Marketing Service, Economic Research Service, Farm Service Agency, Foreign Agricultural Service, and World Agricultural Outlook Board – and the Census Bureau's Foreign Trade Division. Agency representatives will provide updates on recent and pending changes in statistical and information programs important to agriculture, answer questions, and welcome comments and input from data users.

For registration details or additional information about the Data Users' Meeting, see the meeting page on the NASS website (https://www.nass.usda.gov/Education_and_Outreach/Meeting/index.php). Or contact Tina Hall (NASS) at 202-720-3896 or at tina.hall@nass.usda.gov.

The Data Users' Meeting precedes the Industry Outlook Conference at the same location on Wednesday, October 19, 2016. The outlook meeting brings together analysts from various commodity sectors to discuss developments and trends. For registration details or additional information about the Industry Outlook Conference, see the conference page on the LMIC website (<http://lmic.info/page/meetings>). Or contact James Robb at (303) 716-9933.