



Cattle on Feed

ISSN: 1948-9080

Released October 21, 2016, by the National Agricultural Statistics Service (NASS), Agricultural Statistics Board, United States Department of Agriculture (USDA).

United States Cattle on Feed Up Slightly

Cattle and calves on feed for the slaughter market in the United States for feedlots with capacity of 1,000 or more head totaled 10.3 million head on October 1, 2016. The inventory was slightly above October 1, 2015. The inventory included 6.83 million steers and steer calves, down 2 percent from the previous year. This group accounted for 67 percent of the total inventory. Heifers and heifer calves accounted for 3.44 million head, up 4 percent from 2015.

Placements in feedlots during September totaled 1.91 million head, 2 percent below 2015. Placements were the lowest for September since the series began in 1996. Net placements were 1.86 million head. During September, placements of cattle and calves weighing less than 600 pounds were 345,000 head, 600-699 pounds were 300,000 head, 700-799 pounds were 455,000 head, and 800 pounds and greater were 805,000 head.

Marketings of fed cattle during September totaled 1.73 million head, 5 percent above 2015.

Other disappearance totaled 42,000 head during September, 26 percent below 2015.

Number of Cattle on Feed, Placements, Marketings, and Other Disappearance on 1,000+ Capacity Feedlots – United States: October 1, 2015 and 2016

Item	Number		Percent of previous year
	2015	2016	
	(1,000 head)	(1,000 head)	(percent)
On feed September 1	9,986	10,135	101
Placed on feed during September	1,941	1,905	98
Fed cattle marketed during September	1,642	1,732	105
Other disappearance during September	57	42	74
On feed October 1	10,228	10,266	100

Number of Cattle on Feed, Placements, Marketings, and Other Disappearance on 1,000+ Capacity Feedlots – United States: September 1, 2015 and 2016

Item	Number		Percent of previous year
	2015	2016	
	(1,000 head)	(1,000 head)	(percent)
On feed August 1	10,002	10,165	102
Placed on feed during August	1,632	1,879	115
Fed cattle marketed during August	1,588	1,868	118
Other disappearance during August	60	41	68
On feed September 1	9,986	10,135	101

Number on Feed by Class on 1,000+ Capacity Feedlots – United States: October 1, 2015 and 2016

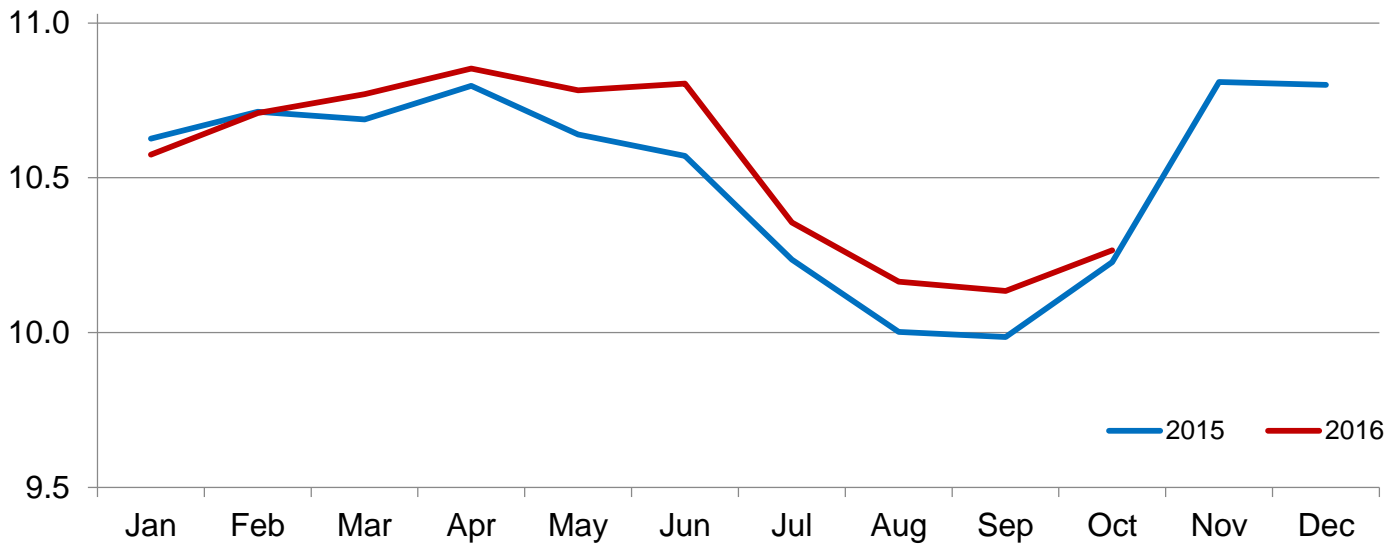
Item	Number		Percent of	
	2015	2016	previous year	inventory
	(1,000 Head)	(1,000 Head)	(percent)	(percent)
Class on feed October 1				
Steers and steer calves	6,937	6,829	98	67
Heifers and heifer calves	3,291	3,437	104	33

Number of Cattle on Feed on 1,000+ Capacity Feedlots by Month – States and United States: 2015 and 2016

State	October 1, 2015	September 1, 2016	October 1, 2016		
			Number	Percent of previous year	Percent of previous month
	(1,000 head)	(1,000 head)	(1,000 head)	(percent)	(percent)
Arizona	240	271	263	110	97
California	460	405	415	90	102
Colorado	830	800	860	104	108
Idaho	220	225	240	109	107
Iowa	600	580	570	95	98
Kansas	2,020	2,170	2,220	110	102
Minnesota	138	119	118	86	99
Nebraska	2,270	2,100	2,160	95	103
Oklahoma	255	300	290	114	97
South Dakota	205	215	210	102	98
Texas	2,500	2,490	2,450	98	98
Washington	195	180	185	95	103
Other States	295	280	285	97	102
United States	10,228	10,135	10,266	100	101

Cattle on Feed Inventory on 1,000+ Capacity Feedlots – United States

Million head

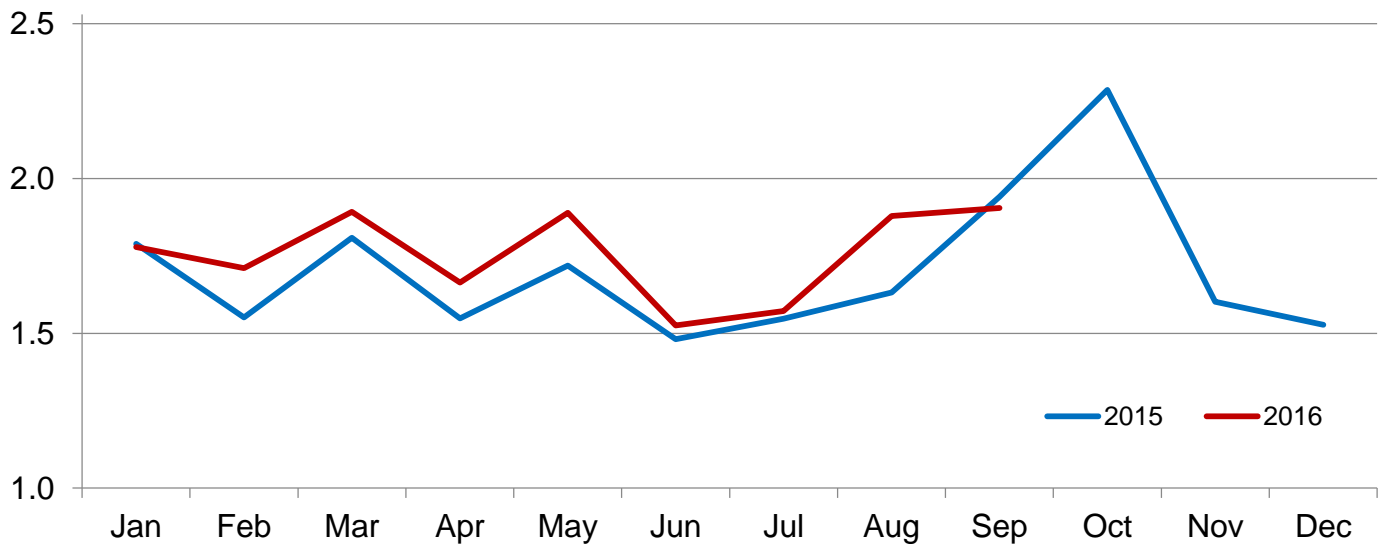


Number of Cattle Placed on Feed on 1,000+ Capacity Feedlots by Month – States and United States: 2015 and 2016

State	During September 2015	During August 2016	During September 2016		
			Number	Percent of previous year	Percent of previous month
	(1,000 head)	(1,000 head)	(1,000 head)	(percent)	(percent)
Arizona	18	14	14	78	100
California	48	40	52	108	130
Colorado	210	170	235	112	138
Idaho	49	45	58	118	129
Iowa	85	71	79	93	111
Kansas	400	485	420	105	87
Minnesota	17	15	22	129	147
Nebraska	510	465	470	92	101
Oklahoma	52	58	48	92	83
South Dakota	43	33	43	100	130
Texas	430	395	385	90	97
Washington	36	35	40	111	114
Other States	43	53	39	91	74
United States	1,941	1,879	1,905	98	101

Number of Cattle Placed on 1000+ Capacity Feedlots – United States

Million head



Number of Cattle Placed on Feed by Weight Group on 1,000+ Capacity Feedlots by Month – States and United States: 2015 and 2016

State	During September									
	Under 600 lbs		600-699 lbs		700-799 lbs		800+ lbs		Total	
	2015	2016	2015	2016	2015	2016	2015	2016	2015	2016
	(1,000 head)	(1,000 head)	(1,000 head)	(1,000 head)	(1,000 head)	(1,000 head)	(1,000 head)	(1,000 head)	(1,000 head)	(1,000 head)
Colorado	30	25	15	20	40	55	125	135	210	235
Kansas	60	60	80	80	120	130	140	150	400	420
Nebraska	60	55	50	45	85	80	315	290	510	470
Texas	150	105	100	105	105	115	75	60	430	385
Other States	105	100	45	50	66	75	175	170	391	395
United States	405	345	290	300	416	455	830	805	1,941	1,905

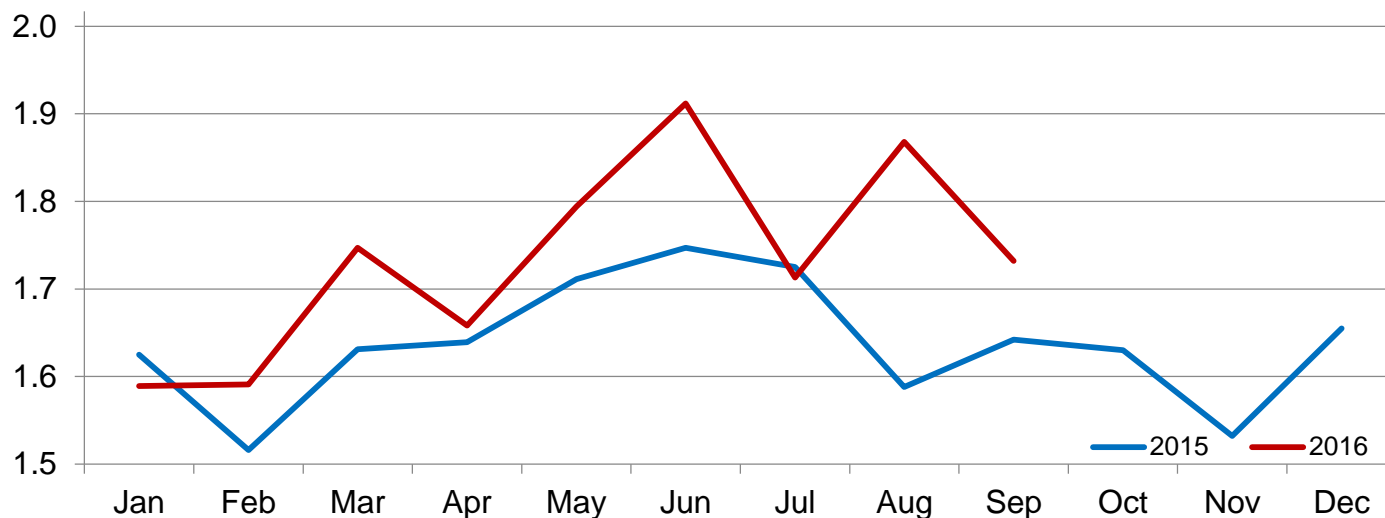
State	During August									
	Under 600 lbs		600-699 lbs		700-799 lbs		800+ lbs		Total	
	2015	2016	2015	2016	2015	2016	2015	2016	2015	2016
	(1,000 head)	(1,000 head)	(1,000 head)	(1,000 head)	(1,000 head)	(1,000 head)	(1,000 head)	(1,000 head)	(1,000 head)	(1,000 head)
Colorado	20	25	10	20	30	35	70	90	130	170
Kansas	65	75	65	85	95	135	145	190	370	485
Nebraska	50	40	35	45	85	90	240	290	410	465
Texas	175	140	70	100	85	95	55	60	385	395
Other States	85	80	35	40	67	74	150	170	337	364
United States	395	360	215	290	362	429	660	800	1,632	1,879

Number of Cattle Marketed on 1,000+ Capacity Feedlots by Month – States and United States: 2015 and 2016

State	During September 2015 (1,000 head)	During August 2016 (1,000 head)	During September 2016		
			Number	Percent of previous year	Percent of previous month
			(1,000 head)	(percent)	(percent)
Arizona	17	24	21	124	88
California	38	42	40	105	95
Colorado	155	175	170	110	97
Idaho	43	49	41	95	84
Iowa	101	90	87	86	97
Kansas	320	415	360	113	87
Minnesota	18	28	22	122	79
Nebraska	430	450	405	94	90
Oklahoma	46	57	57	124	100
South Dakota	42	37	47	112	127
Texas	365	415	415	114	100
Washington	35	44	34	97	77
Other States	32	42	33	103	79
United States	1,642	1,868	1,732	105	93

Number of Cattle Marketed on 1,000+ Capacity Feedlots – United States

Million head



Other Disappearance on 1,000+ Capacity Feedlots by Month – States and United States: 2015 and 2016

State	During September 2015 (1,000 head)	During August 2016 (1,000 head)	During September 2016		
			Number (1,000 head)	Percent of previous year (percent)	Percent of previous month (percent)
Arizona	2	1	1	50	100
California	5	3	2	40	67
Colorado	5	5	5	100	100
Idaho	1	1	2	200	200
Iowa	4	1	2	50	200
Kansas	10	10	10	100	100
Minnesota	1	1	1	100	100
Nebraska	10	5	5	50	100
Oklahoma	1	1	1	100	100
South Dakota	1	1	1	100	100
Texas	15	10	10	67	100
Washington	1	1	1	100	100
Other States	1	1	1	100	100
United States	57	41	42	74	102

**Number on Feed by Class on 1,000+ Capacity Feedlots by Quarter – States and United States:
2015 and 2016**

State	Steers and steer calves			Heifers and heifer calves		
	Oct 1, 2015	Jul 1, 2016	Oct 1, 2016	Oct 1, 2015	Jul 1, 2016	Oct 1, 2016
	(1,000 Head)	(1,000 Head)	(1,000 Head)	(1,000 Head)	(1,000 Head)	(1,000 Head)
Arizona	236	280	258	4	6	5
California	430	380	385	30	45	30
Colorado	570	550	570	260	300	290
Idaho	145	155	155	75	80	85
Iowa	450	440	410	150	170	160
Kansas	1,100	1,070	1,200	920	980	1,020
Minnesota	118	124	101	20	21	17
Nebraska	1,520	1,430	1,410	750	750	750
Oklahoma	180	195	185	75	115	105
South Dakota	118	140	125	87	95	85
Texas	1,750	1,780	1,730	750	770	720
Washington	120	125	115	75	70	70
Other States	200	200	185	95	85	100
United States	6,937	6,869	6,829	3,291	3,487	3,437

Terms and Definitions of Cattle on Feed Estimates

Cattle on feed are steers and heifers being fed a ration of grain, silage, hay and/or protein supplement for slaughter market that are expected to produce a carcass that will grade select or better. It excludes cattle being "backgrounded only" for later sale as feeders or later placement in another feedlot.

Placements are steers and heifers put into a feedlot, fed a ration which will produce a carcass that will grade select or better, and are intended for the slaughter market.

Marketings are steers and heifers shipped out of feedlots to a slaughter market.

Other disappearance includes death loss, movement from feedlots to pasture, and shipments to other feedlots for further feeding.

Statistical Methodology

Survey Procedures: During January and July all known feedlots in the United States with capacity of 1,000 or more head are surveyed to provide data for cattle on feed estimates. During the other months, all known feedlots from 16 States are surveyed. The 16 States account for approximately 98 percent of the cattle on feed in feedlots with capacity of 1,000 or more head. Individual State estimates are published monthly for 12 of the 16 States. Data collected from the remaining 4 States are used to establish the "Other States" estimates. These 4 States include Illinois, New Mexico, Oregon, and Wyoming. The "Other States" category represents all cattle on feed with a capacity of 1,000 or more head for the rest of the United States.

Estimating Procedures: These cattle on feed estimates were prepared by the Agricultural Statistics Board after reviewing recommendations and analysis submitted by Regional Field Offices. Regional and State survey data were reviewed for reasonableness with each other and with estimates from the previous month when establishing the current estimates.

Revision Policy: Revisions to previous estimates are made to improve month to month relationships. Estimates for the previous month are subject to revision in all States each month when current estimates are made. In February, all monthly estimates for the previous year, and the number of feedlots and annual marketings from two years ago are reviewed and subject to revisions. The reviews are primarily based on slaughter data, state check-off or brand data, and any other data that may have been received after the original estimate was made. Estimates will also be reviewed after data from the *Census of Agriculture* are available. No revisions will be made after that date and estimates become final.

Reliability: Since all 1,000+ capacity cattle on feed operators in every State are not included in the monthly survey, survey estimates are subject to sampling variability. Survey results are also subject to non-sampling errors such as omissions, duplications, and mistakes in reporting, recording, and processing the data. The effects of these errors cannot be measured directly. They are minimized through rigid quality controls in the data collection process and through a careful review of all reported data for consistency and reasonableness.

To assist users in evaluating the reliability of estimates in this report, the "**Root Mean Square Error**" is shown for selected items in the table on the following page. The "Root Mean Square Error" is a statistical measure based on past performance and is computed using the differences between first and latest estimates. The "Root Mean Square Error" for cattle on feed inventory estimates over the past 24 months is 0.2 percent. This means that chances are 2 out of 3 that the final estimate will not be above or below the current estimate of 10.3 million head by more than 0.2 percent. Chances are 9 out of 10 that the difference will not exceed 0.4 percent.

The table on the following page shows a 24 month record of the range of differences between first and latest estimates for selected items. Using estimates of number on feed as an example, changes between the first estimate and the latest estimate during the past 24 months have averaged 12,000 head, ranging from 0 to 73,000 head. During this period the initial estimate has been above the latest estimate 3 times and has been below the latest estimate 9 times. This does not imply that the initial estimate is likely to understate or overstate final inventory.

Reliability of Monthly Cattle on Feed Estimates

[Based on data for the past 24 months]

Item	Root mean square error	90 percent confidence level	Difference between first and latest estimate				
			Average	Smallest	Largest	Months	
						Below latest	Above latest
	(percent)	(percent)	(1,000)	(1,000)	(1,000)	(number)	(number)
Number on feed	0.2	0.4	12	0	73	9	3
Placements	0.4	0.7	4	0	28	12	0
Marketings	0.0	0.0	0	0	0	0	0

Information Contacts

Listed below are the commodity specialists in the Livestock Branch of the National Agricultural Statistics Service to contact for additional information. E-mail inquiries may be sent to nass@nass.usda.gov.

Dan Kerestes, Chief, Livestock Branch	(202) 720-3570
Scott Hollis, Head, Livestock Section	(202) 690-2424
Sherry Bertramsen – Livestock Slaughter	(202) 720-3240
Doug Bounds – Hogs and Pigs	(202) 720-3106
David Colwell – Sheep and Goats	(202) 720-8784
Donnie Fike – Dairy Products	(202) 690-3236
Michael Klamm – Cattle, Cattle on Feed	(202) 720-3040
Mike Miller – Milk Production and Milk Cows	(202) 720-3278

Access to NASS Reports

For your convenience, you may access NASS reports and products the following ways:

- All reports are available electronically, at no cost, on the NASS web site: www.nass.usda.gov
- Both national and state specific reports are available via a free e-mail subscription. To set-up this free subscription, visit www.nass.usda.gov and click on “National” or “State” in upper right corner above “search” box to create an account and select the reports you would like to receive.

For more information on NASS surveys and reports, call the NASS Agricultural Statistics Hotline at (800) 727-9540, 7:30 a.m. to 4:00 p.m. ET, or e-mail: nass@nass.usda.gov.

The U.S. Department of Agriculture (USDA) prohibits discrimination against its customers, employees, and applicants for employment on the basis of race, color, national origin, age, disability, sex, gender identity, religion, reprisal, and where applicable, political beliefs, marital status, familial or parental status, sexual orientation, or all or part of an individual's income is derived from any public assistance program, or protected genetic information in employment or in any program or activity conducted or funded by the Department. (Not all prohibited bases will apply to all programs and/or employment activities.)

If you wish to file a Civil Rights program complaint of discrimination, complete the [USDA Program Discrimination Complaint Form](#) (PDF), found online at http://www.ascr.usda.gov/complaint_filing_cust.html, or at any USDA office, or call (866) 632-9992 to request the form. You may also write a letter containing all of the information requested in the form. Send your completed complaint form or letter to us by mail at U.S. Department of Agriculture, Director, Office of Adjudication, 1400 Independence Avenue, S.W., Washington, D.C. 20250-9410, by fax (202) 690-7442 or email at program.intake@usda.gov.