



Cattle on Feed

ISSN: 1948-9080

Released November 18, 2016, by the National Agricultural Statistics Service (NASS), Agricultural Statistics Board, United States Department of Agriculture (USDA).

United States Cattle on Feed Down 1 Percent

Cattle and calves on feed for the slaughter market in the United States for feedlots with capacity of 1,000 or more head totaled 10.7 million head on November 1, 2016. The inventory was 1 percent below November 1, 2015.

Placements in feedlots during October totaled 2.17 million head, 5 percent below 2015. Net placements were 2.11 million head. During October, placements of cattle and calves weighing less than 600 pounds were 610,000 head, 600-699 pounds were 525,000 head, 700-799 pounds were 471,000 head, and 800 pounds and greater were 565,000 head.

Marketings of fed cattle during October totaled 1.71 million head, 5 percent above 2015.

Other disappearance totaled 57,000 head during October, 24 percent below 2015.

Number of Cattle on Feed, Placements, Marketings, and Other Disappearance on 1,000+ Capacity Feedlots – United States: November 1, 2015 and 2016

Item	Number		Percent of previous year
	2015	2016	
	(1,000 head)	(1,000 head)	(percent)
On feed October 1	10,228	10,256	100
Placed on feed during October	2,286	2,171	95
Fed cattle marketed during October	1,630	1,705	105
Other disappearance during October	75	57	76
On feed November 1	10,809	10,665	99

Number of Cattle on Feed, Placements, Marketings, and Other Disappearance on 1,000+ Capacity Feedlots – United States: October 1, 2015 and 2016

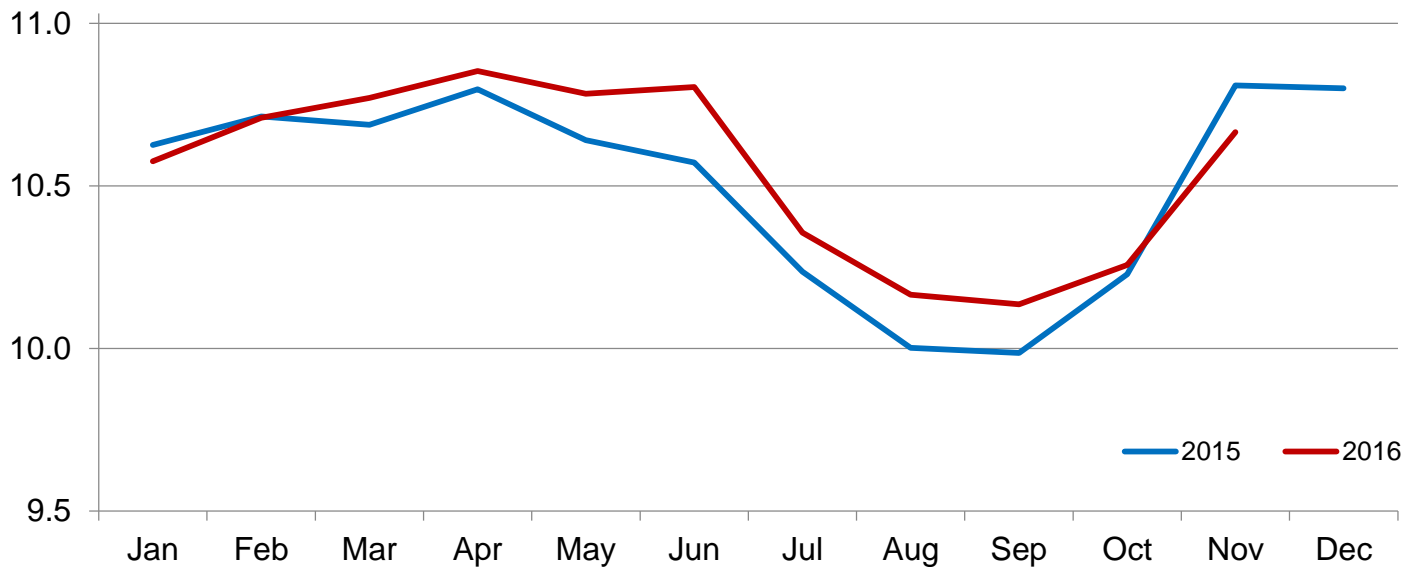
Item	Number		Percent of previous year
	2015	2016	
	(1,000 head)	(1,000 head)	(percent)
On feed September 1	9,986	10,135	101
Placed on feed during September	1,941	1,895	98
Fed cattle marketed during September	1,642	1,732	105
Other disappearance during September	57	42	74
On feed October 1	10,228	10,256	100

Number of Cattle on Feed on 1,000+ Capacity Feedlots by Month – States and United States: 2015 and 2016

State	November 1, 2015	October 1, 2016	November 1, 2016		
			Number	Percent of previous year	Percent of previous month
	(1,000 head)	(1,000 head)	(1,000 head)	(percent)	(percent)
Arizona	243	263	253	104	96
California	455	415	420	92	101
Colorado	880	850	910	103	107
Idaho	230	240	250	109	104
Iowa	640	570	600	94	105
Kansas	2,150	2,220	2,240	104	101
Minnesota	151	118	142	94	120
Nebraska	2,450	2,160	2,320	95	107
Oklahoma	270	290	295	109	102
South Dakota	240	210	240	100	114
Texas	2,580	2,450	2,490	97	102
Washington	205	185	195	95	105
Other States	315	285	310	98	109
United States	10,809	10,256	10,665	99	104

Cattle on Feed Inventory on 1,000+ Capacity Feedlots – United States

Million head

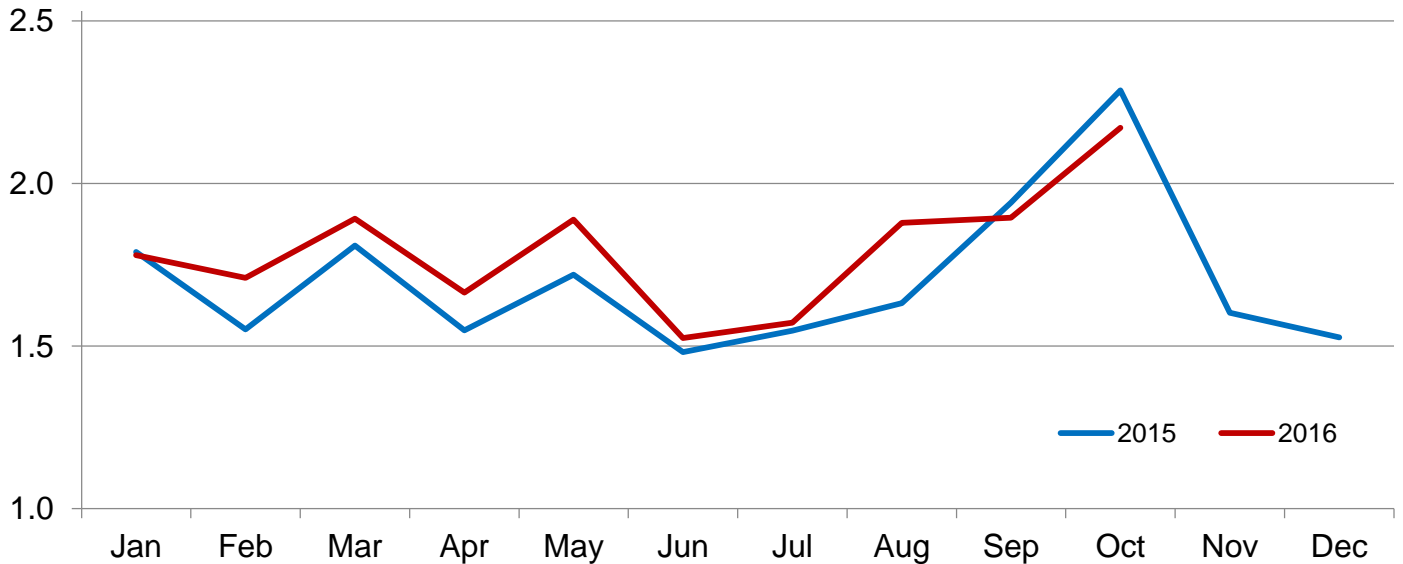


Number of Cattle Placed on Feed on 1,000+ Capacity Feedlots by Month – States and United States: 2015 and 2016

State	During October 2015	During September 2016	During October 2016		
			Number	Percent of previous year	Percent of previous month
	(1,000 head)	(1,000 head)	(1,000 head)	(percent)	(percent)
Arizona	23	14	14	61	100
California	38	52	46	121	88
Colorado	195	225	205	105	91
Idaho	58	58	50	86	86
Iowa	156	79	129	83	163
Kansas	445	420	390	88	93
Minnesota	30	22	39	130	177
Nebraska	645	470	615	95	131
Oklahoma	61	48	63	103	131
South Dakota	75	43	71	95	165
Texas	460	385	445	97	116
Washington	50	40	50	100	125
Other States	50	39	54	108	138
United States	2,286	1,895	2,171	95	115

Number of Cattle Placed on 1,000+ Capacity Feedlots – United States

Million head



Number of Cattle Placed on Feed by Weight Group on 1,000+ Capacity Feedlots by Month – States and United States: 2015 and 2016

State	During October									
	Under 600 lbs		600-699 lbs		700-799 lbs		800+ lbs		Total	
	2015	2016	2015	2016	2015	2016	2015	2016	2015	2016
	(1,000 head)	(1,000 head)	(1,000 head)	(1,000 head)	(1,000 head)	(1,000 head)	(1,000 head)	(1,000 head)	(1,000 head)	(1,000 head)
Colorado	55	55	45	45	30	35	65	70	195	205
Kansas	80	65	100	95	115	115	150	115	445	390
Nebraska	170	200	155	145	80	95	240	175	645	615
Texas	145	105	110	115	130	145	75	80	460	445
Other States	195	185	120	125	76	81	150	125	541	516
United States	645	610	530	525	431	471	680	565	2,286	2,171

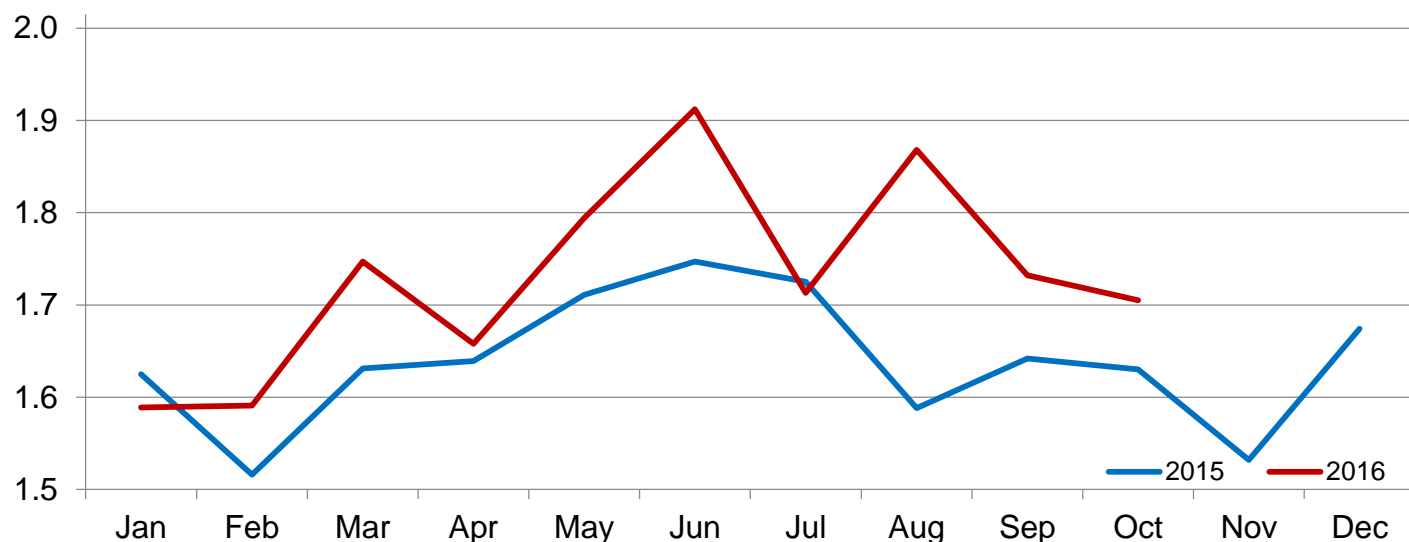
State	During September									
	Under 600 lbs		600-699 lbs		700-799 lbs		800+ lbs		Total	
	2015	2016	2015	2016	2015	2016	2015	2016	2015	2016
	(1,000 head)	(1,000 head)	(1,000 head)	(1,000 head)	(1,000 head)	(1,000 head)	(1,000 head)	(1,000 head)	(1,000 head)	(1,000 head)
Colorado	30	25	15	20	40	50	125	130	210	225
Kansas	60	60	80	80	120	130	140	150	400	420
Nebraska	60	55	50	45	85	80	315	290	510	470
Texas	150	105	100	105	105	115	75	60	430	385
Other States	105	100	45	50	66	75	175	170	391	395
United States	405	345	290	300	416	450	830	800	1,941	1,895

Number of Cattle Marketed on 1,000+ Capacity Feedlots by Month – States and United States: 2015 and 2016

State	During October 2015	During September 2016	During October 2016		
			Number	Percent of previous year	Percent of previous month
			(1,000 head)	(percent)	(percent)
Arizona	19	21	23	121	110
California	38	40	39	103	98
Colorado	140	170	140	100	82
Idaho	47	41	39	83	95
Iowa	113	87	96	85	110
Kansas	300	360	350	117	97
Minnesota	16	22	14	88	64
Nebraska	445	405	445	100	110
Oklahoma	45	57	57	127	100
South Dakota	39	47	40	103	85
Texas	360	415	395	110	95
Washington	39	34	39	100	115
Other States	29	33	28	97	85
United States	1,630	1,732	1,705	105	98

Number of Cattle Marketed on 1,000+ Capacity Feedlots – United States

Million head



Other Disappearance on 1,000+ Capacity Feedlots by Month – States and United States: 2015 and 2016

State	During October 2015 (1,000 head)	During September 2016 (1,000 head)	During October 2016		
			Number (1,000 head)	Percent of previous year (percent)	Percent of previous month (percent)
Arizona	1	1	1	100	100
California	5	2	2	40	100
Colorado	5	5	5	100	100
Idaho	1	2	1	100	50
Iowa	3	2	3	100	150
Kansas	15	10	20	133	200
Minnesota	1	1	1	100	100
Nebraska	20	5	10	50	200
Oklahoma	1	1	1	100	100
South Dakota	1	1	1	100	100
Texas	20	10	10	50	100
Washington	1	1	1	100	100
Other States	1	1	1	100	100
United States	75	42	57	76	136

Terms and Definitions of Cattle on Feed Estimates

Cattle on feed are steers and heifers being fed a ration of grain, silage, hay and/or protein supplement for slaughter market that are expected to produce a carcass that will grade select or better. It excludes cattle being "backgrounded only" for later sale as feeders or later placement in another feedlot.

Placements are steers and heifers put into a feedlot, fed a ration which will produce a carcass that will grade select or better, and are intended for the slaughter market.

Marketings are steers and heifers shipped out of feedlots to a slaughter market.

Other disappearance includes death loss, movement from feedlots to pasture, and shipments to other feedlots for further feeding.

Statistical Methodology

Survey Procedures: During January and July all known feedlots in the United States with capacity of 1,000 or more head are surveyed to provide data for cattle on feed estimates. During the other months, all known feedlots from 16 States are surveyed. The 16 States account for approximately 98 percent of the cattle on feed in feedlots with capacity of 1,000 or more head. Individual State estimates are published monthly for 12 of the 16 States. Data collected from the remaining 4 States are used to establish the "Other States" estimates. These 4 States include Illinois, New Mexico, Oregon, and Wyoming. The "Other States" category represents all cattle on feed with a capacity of 1,000 or more head for the rest of the United States.

Estimating Procedures: These cattle on feed estimates were prepared by the Agricultural Statistics Board after reviewing recommendations and analysis submitted by Regional Field Offices. Regional and State survey data were reviewed for reasonableness with each other and with estimates from the previous month when establishing the current estimates.

Revision Policy: Revisions to previous estimates are made to improve month to month relationships. Estimates for the previous month are subject to revision in all States each month when current estimates are made. In February, all monthly estimates for the previous year, and the number of feedlots and annual marketings from two years ago are reviewed and subject to revisions. The reviews are primarily based on slaughter data, state check-off or brand data, and any other data that may have been received after the original estimate was made. Estimates will also be reviewed after data from the *Census of Agriculture* are available. No revisions will be made after that date and estimates become final.

Reliability: Since all 1,000+ capacity cattle on feed operators in every State are not included in the monthly survey, survey estimates are subject to sampling variability. Survey results are also subject to non-sampling errors such as omissions, duplications, and mistakes in reporting, recording, and processing the data. The effects of these errors cannot be measured directly. They are minimized through rigid quality controls in the data collection process and through a careful review of all reported data for consistency and reasonableness.

To assist users in evaluating the reliability of estimates in this report, the "**Root Mean Square Error**" is shown for selected items in the table on the following page. The "Root Mean Square Error" is a statistical measure based on past performance and is computed using the differences between first and latest estimates. The "Root Mean Square Error" for cattle on feed inventory estimates over the past 24 months is 0.2 percent. This means that chances are 2 out of 3 that the final estimate will not be above or below the current estimate of 10.7 million head by more than 0.2 percent. Chances are 9 out of 10 that the difference will not exceed 0.3 percent.

The table on the following page shows a 24 month record of the range of differences between first and latest estimates for selected items. Using estimates of number on feed as an example, changes between the first estimate and the latest estimate during the past 24 months have averaged 9,000 head, ranging from 0 to 62,000 head. During this period the initial estimate has been above the latest estimate 3 times and has been below the latest estimate 9 times. This does not imply that the initial estimate is likely to understate or overstate final inventory.

Reliability of Monthly Cattle on Feed Estimates

[Based on data for the past 24 months]

Item	Root mean square error	90 percent confidence level	Difference between first and latest estimate				
			Average	Smallest	Largest	Months	
						Below latest	Above latest
	(percent)	(percent)	(1,000)	(1,000)	(1,000)	(number)	(number)
Number on feed	0.2	0.3	9	0	62	9	3
Placements	0.4	0.8	4	0	28	11	1
Marketings	0.0	0.0	0	0	0	0	0

Information Contacts

Listed below are the commodity specialists in the Livestock Branch of the National Agricultural Statistics Service to contact for additional information. E-mail inquiries may be sent to nass@nass.usda.gov.

Dan Kerestes, Chief, Livestock Branch	(202) 720-3570
Scott Hollis, Head, Livestock Section	(202) 690-2424
Sherry Bertramsen – Livestock Slaughter	(202) 720-3240
Doug Bounds – Hogs and Pigs	(202) 720-3106
David Colwell – Sheep and Goats	(202) 720-8784
Donnie Fike – Dairy Products	(202) 690-3236
Michael Klamm – Cattle, Cattle on Feed	(202) 720-3040
Mike Miller – Milk Production and Milk Cows	(202) 720-3278

Access to NASS Reports

For your convenience, you may access NASS reports and products the following ways:

- All reports are available electronically, at no cost, on the NASS web site: www.nass.usda.gov
- Both national and state specific reports are available via a free e-mail subscription. To set-up this free subscription, visit www.nass.usda.gov and click on “National” or “State” in upper right corner above “search” box to create an account and select the reports you would like to receive.

For more information on NASS surveys and reports, call the NASS Agricultural Statistics Hotline at (800) 727-9540, 7:30 a.m. to 4:00 p.m. ET, or e-mail: nass@nass.usda.gov.

The U.S. Department of Agriculture (USDA) prohibits discrimination against its customers, employees, and applicants for employment on the basis of race, color, national origin, age, disability, sex, gender identity, religion, reprisal, and where applicable, political beliefs, marital status, familial or parental status, sexual orientation, or all or part of an individual's income is derived from any public assistance program, or protected genetic information in employment or in any program or activity conducted or funded by the Department. (Not all prohibited bases will apply to all programs and/or employment activities.)

If you wish to file a Civil Rights program complaint of discrimination, complete the [USDA Program Discrimination Complaint Form](#) (PDF), found online at http://www.ascr.usda.gov/complaint_filing_cust.html, or at any USDA office, or call (866) 632-9992 to request the form. You may also write a letter containing all of the information requested in the form. Send your completed complaint form or letter to us by mail at U.S. Department of Agriculture, Director, Office of Adjudication, 1400 Independence Avenue, S.W., Washington, D.C. 20250-9410, by fax (202) 690-7442 or email at program.intake@usda.gov.