



Cattle on Feed

ISSN: 1948-9080

Released December 23, 2016, by the National Agricultural Statistics Service (NASS), Agricultural Statistics Board, United States Department of Agriculture (USDA).

United States Cattle on Feed Down 1 Percent

Cattle and calves on feed for the slaughter market in the United States for feedlots with capacity of 1,000 or more head totaled 10.7 million head on December 1, 2016. The inventory was 1 percent below December 1, 2015.

Placements in feedlots during November totaled 1.84 million head, 15 percent above 2015. Net placements were 1.77 million head. During November, placements of cattle and calves weighing less than 600 pounds were 470,000 head, 600-699 pounds were 490,000 head, 700-799 pounds were 425,000 head, and 800 pounds and greater were 458,000 head.

Marketings of fed cattle during November totaled 1.79 million head, 17 percent above 2015.

Other disappearance totaled 69,000 head during November, 13 percent below 2015.

Number of Cattle on Feed, Placements, Marketings, and Other Disappearance on 1,000+ Capacity Feedlots – United States: December 1, 2015 and 2016

Item	Number		Percent of previous year
	2015	2016	
	(1,000 head)	(1,000 head)	(percent)
On feed November 1	10,809	10,665	99
Placed on feed during November	1,602	1,843	115
Fed cattle marketed during November	1,532	1,787	117
Other disappearance during November	79	69	87
On feed December 1	10,800	10,652	99

Number of Cattle on Feed, Placements, Marketings, and Other Disappearance on 1,000+ Capacity Feedlots – United States: November 1, 2015 and 2016

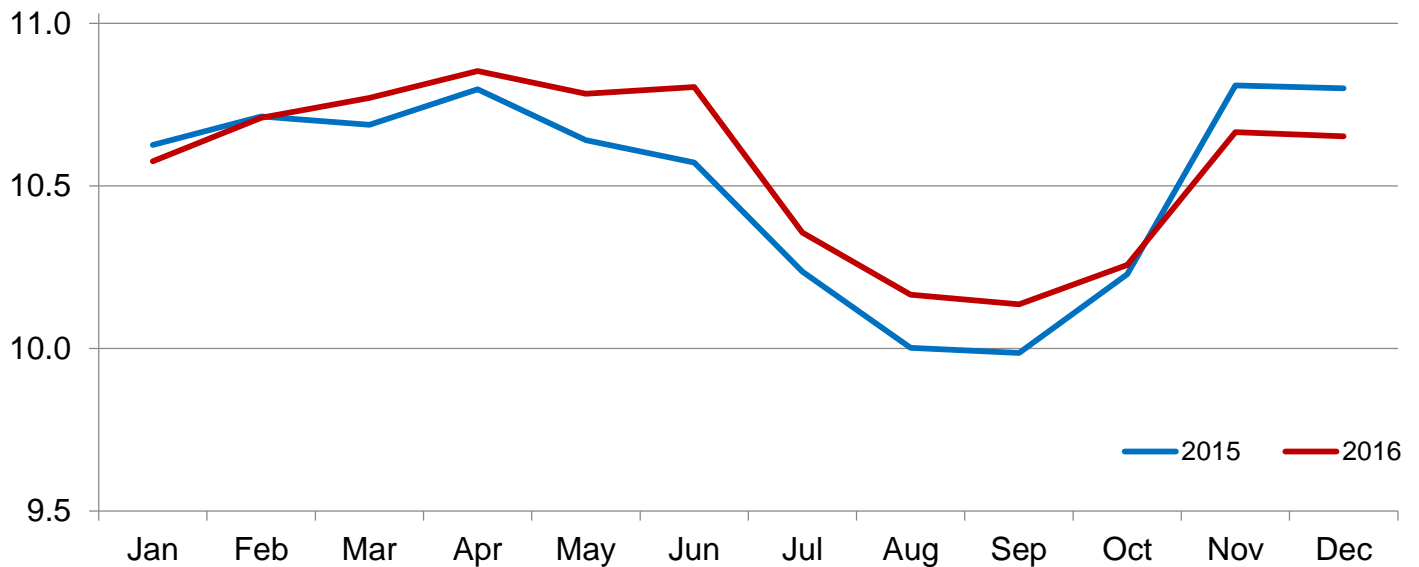
Item	Number		Percent of previous year
	2015	2016	
	(1,000 head)	(1,000 head)	(percent)
On feed October 1	10,228	10,256	100
Placed on feed during October	2,286	2,171	95
Fed cattle marketed during October	1,630	1,705	105
Other disappearance during October	75	57	76
On feed November 1	10,809	10,665	99

Number of Cattle on Feed on 1,000+ Capacity Feedlots by Month – States and United States: 2015 and 2016

State	December 1, 2015	November 1, 2016	December 1, 2016		
			Number	Percent of previous year	Percent of previous month
	(1,000 head)	(1,000 head)	(1,000 head)	(percent)	(percent)
Arizona	248	253	251	101	99
California	455	420	420	92	100
Colorado	890	910	910	102	100
Idaho	235	250	260	111	104
Iowa	630	600	600	95	100
Kansas	2,140	2,240	2,220	104	99
Minnesota	152	142	141	93	99
Nebraska	2,490	2,320	2,370	95	102
Oklahoma	275	295	290	105	98
South Dakota	250	240	245	98	102
Texas	2,510	2,490	2,430	97	98
Washington	205	195	195	95	100
Other States	320	310	320	100	103
United States	10,800	10,665	10,652	99	100

Cattle on Feed Inventory on 1,000+ Capacity Feedlots – United States

Million head

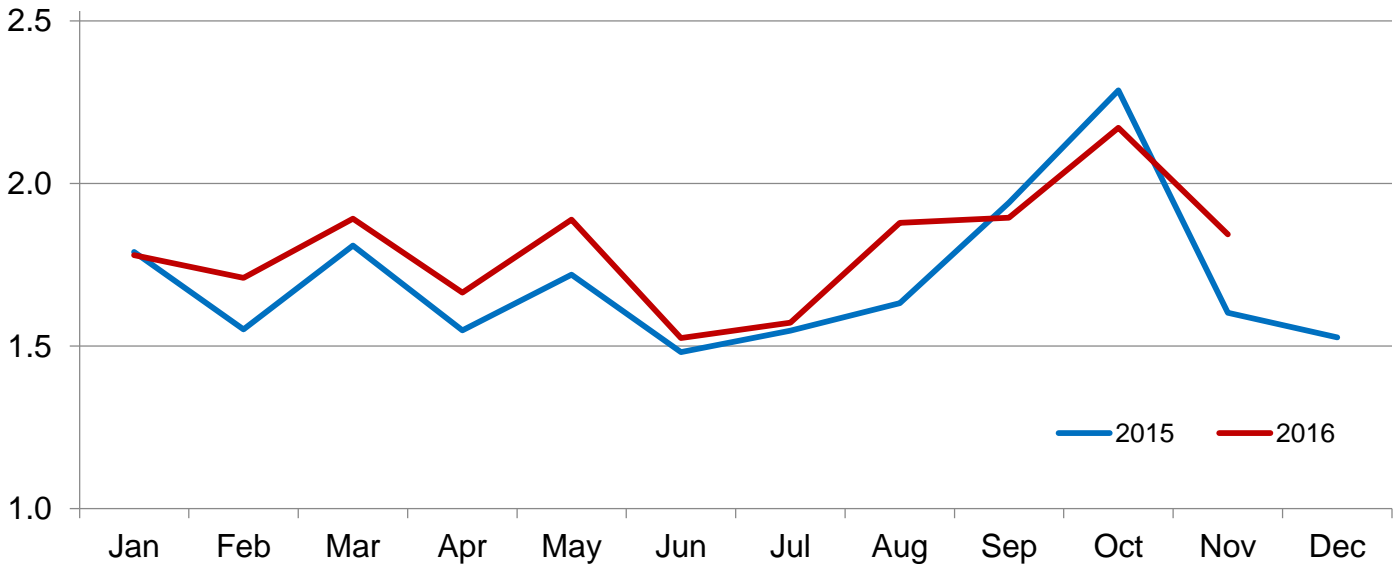


Number of Cattle Placed on Feed on 1,000+ Capacity Feedlots by Month – States and United States: 2015 and 2016

State	During November 2015 (1,000 head)	During October 2016 (1,000 head)	During November 2016		
			Number (1,000 head)	Percent of previous year (percent)	Percent of previous month (percent)
Arizona	27	14	27	100	193
California	50	46	48	96	104
Colorado	140	205	140	100	68
Idaho	42	50	51	121	102
Iowa	101	129	102	101	79
Kansas	305	390	370	121	95
Minnesota	13	39	16	123	41
Nebraska	440	615	510	116	83
Oklahoma	45	63	52	116	83
South Dakota	50	71	50	100	70
Texas	310	445	390	126	88
Washington	43	50	41	95	82
Other States	36	54	46	128	85
United States	1,602	2,171	1,843	115	85

Number of Cattle Placed on 1,000+ Capacity Feedlots – United States

Million head



Number of Cattle Placed on Feed by Weight Group on 1,000+ Capacity Feedlots by Month – States and United States: 2015 and 2016

State	During November									
	Under 600 lbs		600-699 lbs		700-799 lbs		800+ lbs		Total	
	2015	2016	2015	2016	2015	2016	2015	2016	2015	2016
	(1,000 head)	(1,000 head)	(1,000 head)	(1,000 head)	(1,000 head)	(1,000 head)	(1,000 head)	(1,000 head)	(1,000 head)	(1,000 head)
Colorado	35	45	35	35	30	25	40	35	140	140
Kansas	55	55	70	90	85	110	95	115	305	370
Nebraska	115	120	110	150	60	85	155	155	440	510
Texas	110	105	75	95	75	125	50	65	310	390
Other States	155	145	97	120	60	80	95	88	407	433
United States	470	470	387	490	310	425	435	458	1,602	1,843

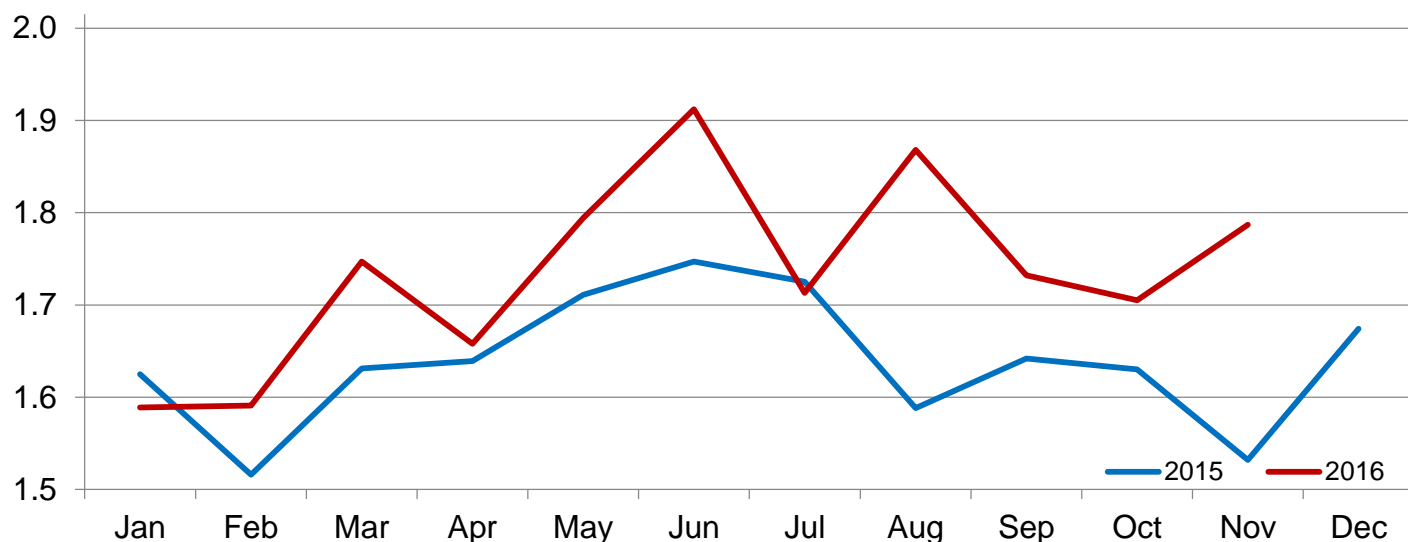
State	During October									
	Under 600 lbs		600-699 lbs		700-799 lbs		800+ lbs		Total	
	2015	2016	2015	2016	2015	2016	2015	2016	2015	2016
	(1,000 head)	(1,000 head)	(1,000 head)	(1,000 head)	(1,000 head)	(1,000 head)	(1,000 head)	(1,000 head)	(1,000 head)	(1,000 head)
Colorado	55	55	45	45	30	35	65	70	195	205
Kansas	80	65	100	95	115	115	150	115	445	390
Nebraska	170	200	155	145	80	95	240	175	645	615
Texas	145	105	110	115	130	145	75	80	460	445
Other States	195	185	120	125	76	81	150	125	541	516
United States	645	610	530	525	431	471	680	565	2,286	2,171

Number of Cattle Marketed on 1,000+ Capacity Feedlots by Month – States and United States: 2015 and 2016

State	During November 2015 (1,000 head)	During October 2016 (1,000 head)	During November 2016		
			Number	Percent of previous year	Percent of previous month
			(1,000 head)	(percent)	(percent)
Arizona	21	23	28	133	122
California	45	39	45	100	115
Colorado	125	140	135	108	96
Idaho	36	39	39	108	100
Iowa	107	96	100	93	104
Kansas	295	350	370	125	106
Minnesota	11	14	16	145	114
Nebraska	385	445	445	116	100
Oklahoma	39	57	55	141	96
South Dakota	38	40	44	116	110
Texas	360	395	435	121	110
Washington	42	39	40	95	103
Other States	28	28	35	125	125
United States	1,532	1,705	1,787	117	105

Number of Cattle Marketed on 1,000+ Capacity Feedlots – United States

Million head



Other Disappearance on 1,000+ Capacity Feedlots by Month – States and United States: 2015 and 2016

State	During November 2015 (1,000 head)	During October 2016 (1,000 head)	During November 2016		
			Number (1,000 head)	Percent of previous year (percent)	Percent of previous month (percent)
Arizona	1	1	1	100	100
California	5	2	3	60	150
Colorado	5	5	5	100	100
Idaho	1	1	2	200	200
Iowa	4	3	2	50	67
Kansas	20	20	20	100	100
Minnesota	1	1	1	100	100
Nebraska	15	10	15	100	150
Oklahoma	1	1	2	200	200
South Dakota	2	1	1	50	100
Texas	20	10	15	75	150
Washington	1	1	1	100	100
Other States	3	1	1	33	100
United States	79	57	69	87	121

Terms and Definitions of Cattle on Feed Estimates

Cattle on feed are steers and heifers being fed a ration of grain, silage, hay and/or protein supplement for slaughter market that are expected to produce a carcass that will grade select or better. It excludes cattle being "backgrounded only" for later sale as feeders or later placement in another feedlot.

Placements are steers and heifers put into a feedlot, fed a ration which will produce a carcass that will grade select or better, and are intended for the slaughter market.

Marketings are steers and heifers shipped out of feedlots to a slaughter market.

Other disappearance includes death loss, movement from feedlots to pasture, and shipments to other feedlots for further feeding.

Statistical Methodology

Survey Procedures: During January and July all known feedlots in the United States with capacity of 1,000 or more head are surveyed to provide data for cattle on feed estimates. During the other months, all known feedlots from 16 States are surveyed. The 16 States account for approximately 98 percent of the cattle on feed in feedlots with capacity of 1,000 or more head. Individual State estimates are published monthly for 12 of the 16 States. Data collected from the remaining 4 States are used to establish the "Other States" estimates. These 4 States include Illinois, New Mexico, Oregon, and Wyoming. The "Other States" category represents all cattle on feed with a capacity of 1,000 or more head for the rest of the United States.

Estimating Procedures: These cattle on feed estimates were prepared by the Agricultural Statistics Board after reviewing recommendations and analysis submitted by Regional Field Offices. Regional and State survey data were reviewed for reasonableness with each other and with estimates from the previous month when establishing the current estimates.

Revision Policy: Revisions to previous estimates are made to improve month to month relationships. Estimates for the previous month are subject to revision in all States each month when current estimates are made. In February, all monthly estimates for the previous year, and the number of feedlots and annual marketings from two years ago are reviewed and subject to revisions. The reviews are primarily based on slaughter data, state check-off or brand data, and any other data that may have been received after the original estimate was made. Estimates will also be reviewed after data from the *Census of Agriculture* are available. No revisions will be made after that date and estimates become final.

Reliability: Since all 1,000+ capacity cattle on feed operators in every State are not included in the monthly survey, survey estimates are subject to sampling variability. Survey results are also subject to non-sampling errors such as omissions, duplications, and mistakes in reporting, recording, and processing the data. The effects of these errors cannot be measured directly. They are minimized through rigid quality controls in the data collection process and through a careful review of all reported data for consistency and reasonableness.

To assist users in evaluating the reliability of estimates in this report, the "**Root Mean Square Error**" is shown for selected items in the table on the following page. The "Root Mean Square Error" is a statistical measure based on past performance and is computed using the differences between first and latest estimates. The "Root Mean Square Error" for cattle on feed inventory estimates over the past 24 months is 0.1 percent. This means that chances are 2 out of 3 that the final estimate will not be above or below the current estimate of 10.7 million head by more than 0.1 percent. Chances are 9 out of 10 that the difference will not exceed 0.2 percent.

The table on the following page shows a 24 month record of the range of differences between first and latest estimates for selected items. Using estimates of number on feed as an example, changes between the first estimate and the latest estimate during the past 24 months have averaged 7,000 head, ranging from 0 to 60,000 head. During this period the initial estimate has been above the latest estimate 2 times and has been below the latest estimate 9 times. This does not imply that the initial estimate is likely to understate or overstate final inventory.

Reliability of Monthly Cattle on Feed Estimates

[Based on data for the past 24 months]

Item	Root mean square error	90 percent confidence level	Difference between first and latest estimate				
			Average	Smallest	Largest	Months	
						Below latest	Above latest
	(percent)	(percent)	(1,000)	(1,000)	(1,000)	(number)	(number)
Number on feed	0.1	0.2	7	0	60	9	2
Placements	0.4	0.7	3	0	28	10	1
Marketings	0.0	0.0	0	0	0	0	0

Information Contacts

Listed below are the commodity specialists in the Livestock Branch of the National Agricultural Statistics Service to contact for additional information. E-mail inquiries may be sent to nass@nass.usda.gov.

Dan Kerestes, Chief, Livestock Branch	(202) 720-3570
Scott Hollis, Head, Livestock Section	(202) 690-2424
Sherry Bertramsen – Livestock Slaughter	(202) 720-3240
David Colwell – Sheep and Goats	(202) 720-8784
Donnie Fike – Dairy Products	(202) 690-3236
Michael Klamm – Cattle, Cattle on Feed	(202) 720-3040
Mike Miller – Milk Production and Milk Cows	(202) 720-3278
Seth Riggins – Hogs and Pigs	(202) 720-3106

Access to NASS Reports

For your convenience, you may access NASS reports and products the following ways:

- All reports are available electronically, at no cost, on the NASS web site: www.nass.usda.gov
- Both national and state specific reports are available via a free e-mail subscription. To set-up this free subscription, visit www.nass.usda.gov and click on “National” or “State” in upper right corner above “search” box to create an account and select the reports you would like to receive.

For more information on NASS surveys and reports, call the NASS Agricultural Statistics Hotline at (800) 727-9540, 7:30 a.m. to 4:00 p.m. ET, or e-mail: nass@nass.usda.gov.

The U.S. Department of Agriculture (USDA) prohibits discrimination against its customers, employees, and applicants for employment on the basis of race, color, national origin, age, disability, sex, gender identity, religion, reprisal, and where applicable, political beliefs, marital status, familial or parental status, sexual orientation, or all or part of an individual's income is derived from any public assistance program, or protected genetic information in employment or in any program or activity conducted or funded by the Department. (Not all prohibited bases will apply to all programs and/or employment activities.)

If you wish to file a Civil Rights program complaint of discrimination, complete the [USDA Program Discrimination Complaint Form](#) (PDF), found online at http://www.ascr.usda.gov/complaint_filing_cust.html, or at any USDA office, or call (866) 632-9992 to request the form. You may also write a letter containing all of the information requested in the form. Send your completed complaint form or letter to us by mail at U.S. Department of Agriculture, Director, Office of Adjudication, 1400 Independence Avenue, S.W., Washington, D.C. 20250-9410, by fax (202) 690-7442 or email at program.intake@usda.gov.