



# Cattle on Feed

ISSN: 1948-9080

---

Released December 22, 2017, by the National Agricultural Statistics Service (NASS), Agricultural Statistics Board, United States Department of Agriculture (USDA).

## United States Cattle on Feed Up 8 Percent

**Cattle and calves on feed** for the slaughter market in the United States for feedlots with capacity of 1,000 or more head totaled 11.5 million head on December 1, 2017. The inventory was 8 percent above December 1, 2016.

**Placements** in feedlots during November totaled 2.10 million head, 14 percent above 2016. Net placements were 2.03 million head. During November, placements of cattle and calves weighing less than 600 pounds were 610,000 head, 600-699 pounds were 545,000 head, 700-799 pounds were 455,000 head, 800-899 pounds were 294,000 head, 900-999 pounds were 75,000 head, and 1,000 pounds and greater were 120,000 head.

**Marketings** of fed cattle during November totaled 1.84 million head, 3 percent above 2016. Marketings were the highest for November since the series began in 1996.

**Other disappearance** totaled 71,000 head during November, 3 percent above 2016.

**Number of Cattle on Feed, Placements, Marketings, and Other Disappearance on 1,000+ Capacity Feedlots – United States: December 1, 2016 and 2017**

Item	Number		Percent of previous year
	2016	2017	
	(1,000 head)	(1,000 head)	(percent)
On feed November 1 .....	10,665	11,332	106
Placed on feed during November .....	1,843	2,099	114
Fed cattle marketed during November .....	1,787	1,844	103
Other disappearance during November .....	69	71	103
On feed December 1 .....	10,652	11,516	108

**Number of Cattle on Feed, Placements, Marketings, and Other Disappearance on 1,000+ Capacity Feedlots – United States: November 1, 2016 and 2017**

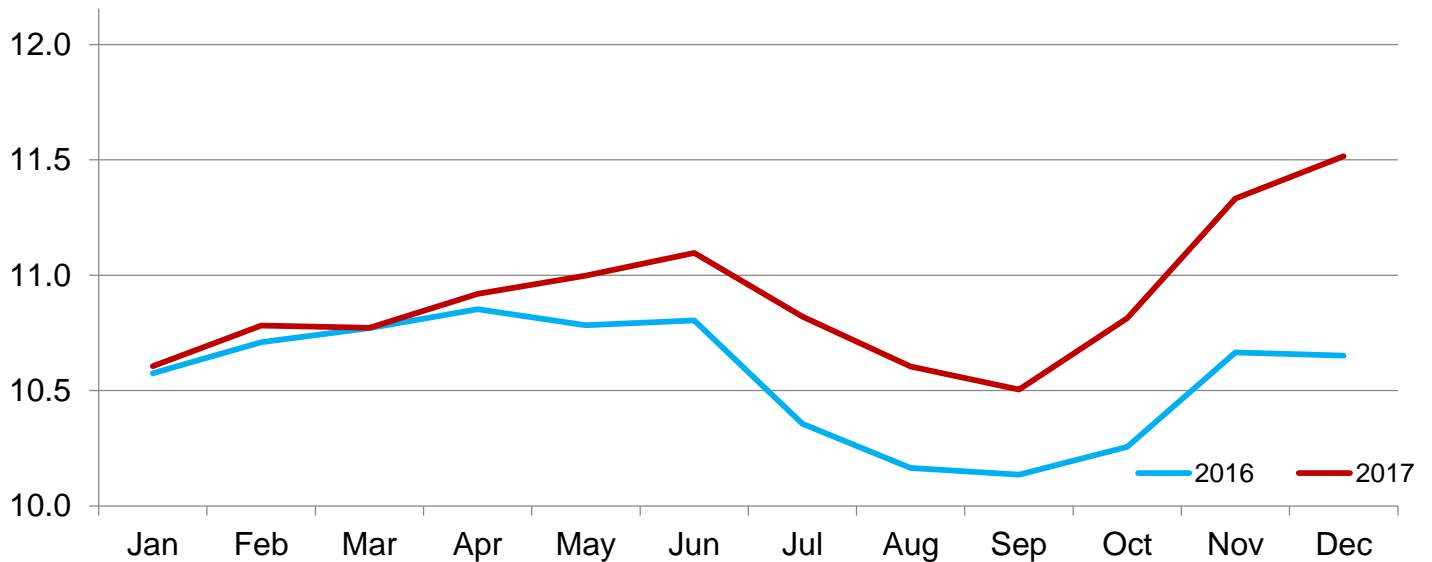
Item	Number		Percent of previous year
	2016	2017	
	(1,000 head)	(1,000 head)	(percent)
On feed October 1 .....	10,256	10,813	105
Placed on feed during October .....	2,171	2,393	110
Fed cattle marketed during October .....	1,705	1,801	106
Other disappearance during October .....	57	73	128
On feed November 1 .....	10,665	11,332	106

**Number of Cattle on Feed on 1,000+ Capacity Feedlots by Month – States and United States: 2016 and 2017**

State	December 1, 2016	November 1, 2017	December 1, 2017		
			Number	Percent of previous year	Percent of previous month
	(1,000 head)	(1,000 head)	(1,000 head)	(percent)	(percent)
Arizona .....	251	252	261	104	104
California .....	420	440	470	112	107
Colorado .....	910	980	990	109	101
Idaho .....	260	255	260	100	102
Iowa .....	600	690	700	117	101
Kansas .....	2,220	2,290	2,310	104	101
Minnesota .....	146	150	155	106	103
Nebraska .....	2,370	2,520	2,590	109	103
Oklahoma .....	290	320	315	109	98
South Dakota .....	240	260	260	108	100
Texas .....	2,430	2,640	2,660	109	101
Washington .....	195	210	215	110	102
Other States .....	320	325	330	103	102
United States .....	10,652	11,332	11,516	108	102

**Cattle on Feed Inventory on 1,000+ Capacity Feedlots – United States**

Million head

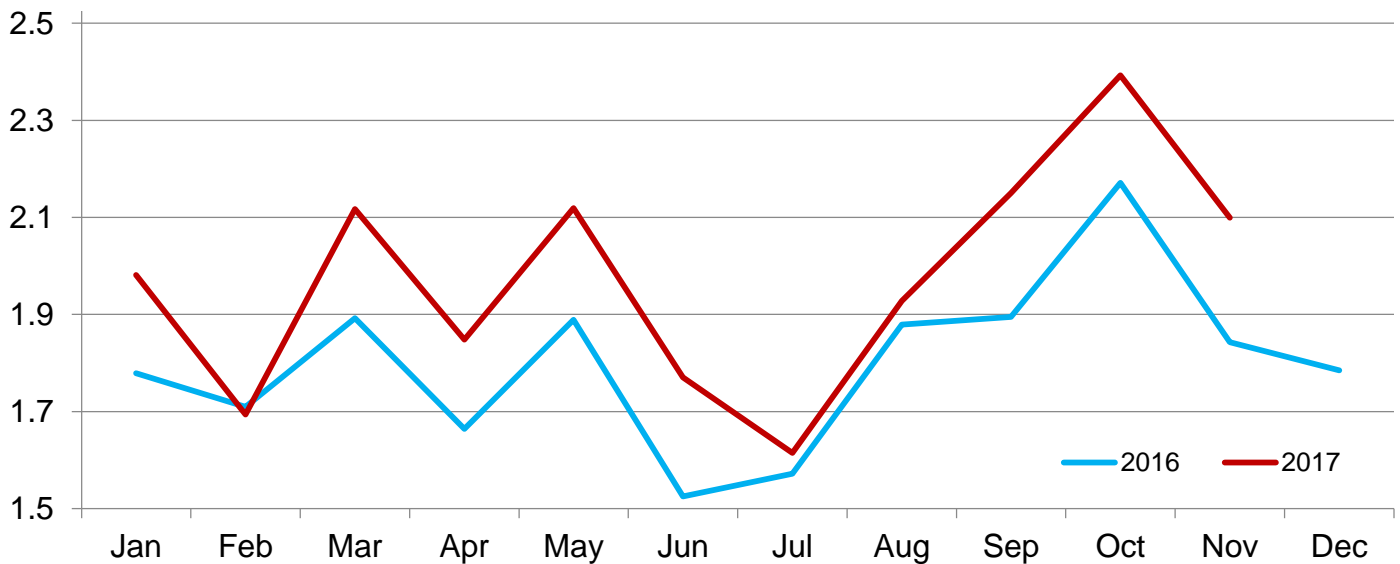


**Number of Cattle Placed on Feed on 1,000+ Capacity Feedlots by Month – States and United States: 2016 and 2017**

State	During November 2016 (1,000 head)	During October 2017 (1,000 head)	During November 2017		
			Number (1,000 head)	Percent of previous year (percent)	Percent of previous month (percent)
Arizona .....	27	25	34	126	136
California .....	48	63	71	148	113
Colorado .....	140	195	150	107	77
Idaho .....	51	58	48	94	83
Iowa .....	102	142	122	120	86
Kansas .....	370	430	420	114	98
Minnesota .....	19	43	26	137	60
Nebraska .....	510	680	545	107	80
Oklahoma .....	52	59	60	115	102
South Dakota .....	47	87	54	115	62
Texas .....	390	505	480	123	95
Washington .....	41	50	43	105	86
Other States .....	46	56	46	100	82
United States .....	1,843	2,393	2,099	114	88

**Number of Cattle Placed on 1,000+ Capacity Feedlots – United States**

Million head



**Number of Cattle Placed on Feed by Weight Group on 1,000+ Capacity Feedlots by Month – States and United States: 2016 and 2017**

State	During November 2016							
	Under 600 lbs	600-699 lbs	700-799 lbs	800-899 lbs	900+ lbs <sup>1</sup>	900-999 lbs	1,000+ lbs	Total
	(1,000 head)	(1,000 head)	(1,000 head)	(1,000 head)	(1,000 head)	(1,000 head)	(1,000 head)	(1,000 head)
Colorado .....	45	35	25	15	20	(D)	(D)	140
Kansas .....	55	90	110	75	40	(D)	(D)	370
Nebraska .....	120	150	85	90	65	(D)	(D)	510
Texas .....	105	95	125	45	20	(D)	(D)	390
Other States ...	145	120	80	50	38	(D)	(D)	433
United States ..	470	490	425	275	(X)	100	83	1,843
State	During October 2017							
	Under 600 lbs	600-699 lbs	700-799 lbs	800-899 lbs	900+ lbs <sup>1</sup>	900-999 lbs	1,000+ lbs	Total
	(1,000 head)	(1,000 head)	(1,000 head)	(1,000 head)	(1,000 head)	(1,000 head)	(1,000 head)	(1,000 head)
Colorado .....	55	40	35	35	30	(D)	(D)	195
Kansas .....	70	95	130	90	45	(D)	(D)	430
Nebraska .....	190	175	110	100	105	(D)	(D)	680
Texas .....	140	135	145	70	15	(D)	(D)	505
Other States ...	220	145	90	73	55	(D)	(D)	583
United States ..	675	590	510	368	(X)	160	90	2,393
State	During November 2017							
	Under 600 lbs	600-699 lbs	700-799 lbs	800-899 lbs	900+ lbs <sup>1</sup>	900-999 lbs	1,000+ lbs	Total
	(1,000 head)	(1,000 head)	(1,000 head)	(1,000 head)	(1,000 head)	(1,000 head)	(1,000 head)	(1,000 head)
Colorado .....	45	40	30	20	15	(D)	(D)	150
Kansas .....	70	105	125	80	40	(D)	(D)	420
Nebraska .....	115	150	100	90	90	(D)	(D)	545
Texas .....	180	130	110	45	15	(D)	(D)	480
Other States ...	200	120	90	59	35	(D)	(D)	504
United States ..	610	545	455	294	(X)	75	120	2,099

(D) Withheld to avoid disclosing data for individual operations.

(X) Not applicable.

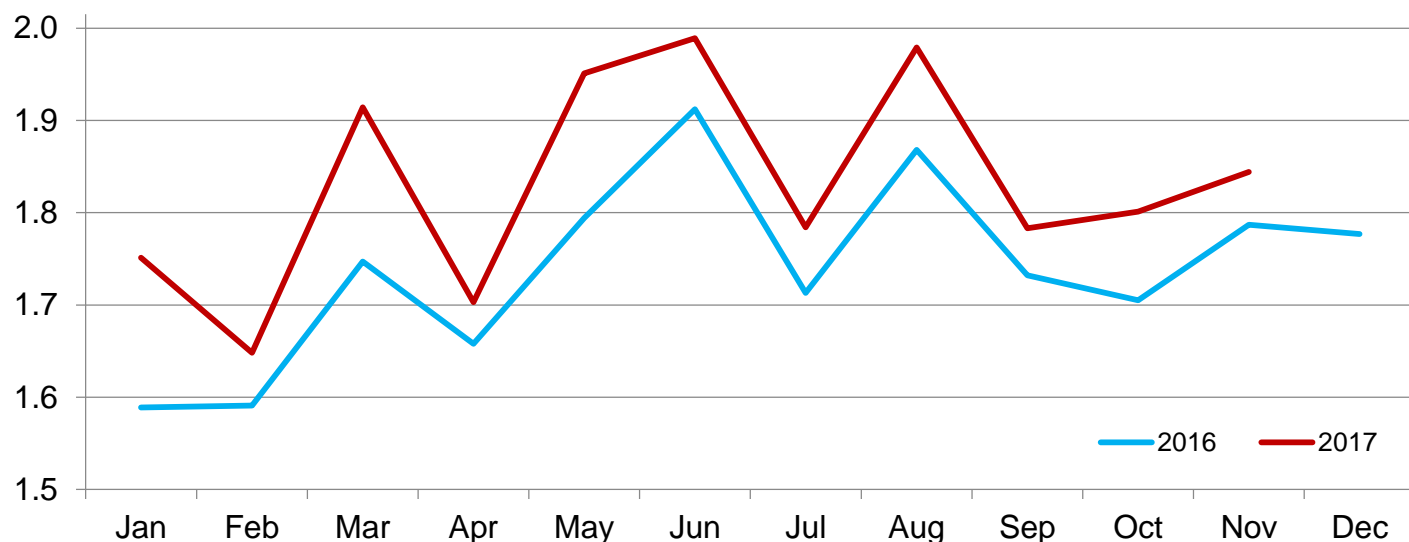
<sup>1</sup> The 900 pounds and greater weight group is the sum of 900-999 pounds and 1,000 pounds and greater weight groups.

**Number of Cattle Marketed on 1,000+ Capacity Feedlots by Month – States and United States: 2016 and 2017**

State	During November 2016	During October 2017	During November 2017		
			Number	Percent of previous year	Percent of previous month
			(1,000 head)	(percent)	(percent)
Arizona .....	28	20	24	86	120
California .....	45	49	38	84	78
Colorado .....	135	150	135	100	90
Idaho .....	39	46	41	105	89
Iowa .....	100	99	110	110	111
Kansas .....	370	375	380	103	101
Minnesota .....	14	12	20	143	167
Nebraska .....	445	435	460	103	106
Oklahoma .....	55	57	63	115	111
South Dakota .....	46	45	53	115	118
Texas .....	435	445	445	102	100
Washington .....	40	38	36	90	95
Other States .....	35	30	39	111	130
United States .....	1,787	1,801	1,844	103	102

## Number of Cattle Marketed on 1,000+ Capacity Feedlots – United States

Million head



### Other Disappearance on 1,000+ Capacity Feedlots by Month – States and United States: 2016 and 2017

State	During November 2016 (1,000 head)	During October 2017 (1,000 head)	During November 2017		
			Number (1,000 head)	Percent of previous year (percent)	Percent of previous month (percent)
Arizona .....	1	1	1	100	100
California .....	3	4	3	100	75
Colorado .....	5	5	5	100	100
Idaho .....	2	2	2	100	100
Iowa .....	2	3	2	100	67
Kansas .....	20	15	20	100	133
Minnesota .....	1	1	1	100	100
Nebraska .....	15	15	15	100	100
Oklahoma .....	2	2	2	100	100
South Dakota .....	1	2	1	100	50
Texas .....	15	20	15	100	75
Washington .....	1	2	2	200	100
Other States .....	1	1	2	200	200
United States .....	69	73	71	103	97

## Terms and Definitions of Cattle on Feed Estimates

**Cattle on feed** are steers and heifers being fed a ration of grain, silage, hay and/or protein supplement for slaughter market that are expected to produce a carcass that will grade select or better. It excludes cattle being "backgrounded only" for later sale as feeders or later placement in another feedlot.

**Placements** are steers and heifers put into a feedlot, fed a ration which will produce a carcass that will grade select or better, and are intended for the slaughter market.

**Marketings** are steers and heifers shipped out of feedlots to a slaughter market.

**Other disappearance** includes death loss, movement from feedlots to pasture, and shipments to other feedlots for further feeding.

## Statistical Methodology

**Survey Procedures:** During January and July all known feedlots in the United States with capacity of 1,000 or more head are surveyed to provide data for cattle on feed estimates. During the other months, all known feedlots from 16 States are surveyed. The 16 States account for approximately 98 percent of the cattle on feed in feedlots with capacity of 1,000 or more head. Individual State estimates are published monthly for 12 of the 16 States. Data collected from the remaining 4 States are used to establish the "Other States" estimates. These 4 States include Illinois, New Mexico, Oregon, and Wyoming. The "Other States" category represents all cattle on feed with a capacity of 1,000 or more head for the rest of the United States.

**Estimating Procedures:** These cattle on feed estimates were prepared by the Agricultural Statistics Board after reviewing recommendations and analysis submitted by Regional Field Offices. Regional and State survey data were reviewed for reasonableness with each other and with estimates from the previous month when establishing the current estimates.

**Revision Policy:** Revisions to previous estimates are made to improve month to month relationships. Estimates for the previous month are subject to revision in all States each month when current estimates are made. In February, all monthly estimates for the previous year, and the number of feedlots and annual marketings from two years ago are reviewed and subject to revisions. The reviews are primarily based on slaughter data, state check-off or brand data, and any other data that may have been received after the original estimate was made. Estimates will also be reviewed after data from the *Census of Agriculture* are available. No revisions will be made after that date and estimates become final.

**Reliability:** Since all 1,000+ capacity cattle on feed operators in every State are not included in the monthly survey, survey estimates are subject to sampling variability. Survey results are also subject to non-sampling errors such as omissions, duplications, and mistakes in reporting, recording, and processing the data. The effects of these errors cannot be measured directly. They are minimized through rigid quality controls in the data collection process and through a careful review of all reported data for consistency and reasonableness.

To assist users in evaluating the reliability of estimates in this report, the "**Root Mean Square Error**" is shown for selected items in the table on the following page. The "Root Mean Square Error" is a statistical measure based on past performance and is computed using the differences between first and latest estimates. The "Root Mean Square Error" for cattle on feed inventory estimates over the past 24 months is 0.0 percent. This means that chances are 2 out of 3 that the final estimate will not be above or below the current estimate of 11.5 million head by more than 0.0 percent. Chances are 9 out of 10 that the difference will not exceed 0.1 percent.

The table on the following page shows a 24 month record of the range of differences between first and latest estimates for selected items. Using estimates of number on feed as an example, changes between the first estimate and the latest estimate during the past 24 months have averaged 2,000 head, ranging from 0 to 15,000 head. During this period the initial estimate has been above the latest estimate 1 time and has been below the latest estimate 4 times. This does not imply that the initial estimate is likely to understate or overstate final inventory.

## Reliability of Monthly Cattle on Feed Estimates

[Based on data for the past 24 months]

Item	Root mean square error	90 percent confidence level	Difference between first and latest estimate				
			Average	Smallest	Largest	Months	
						Below latest	Above latest
	(percent)	(percent)	(1,000)	(1,000)	(1,000)	(number)	(number)
Number on feed .....	0.0	0.1	2	0	15	4	1
Placements .....	0.2	0.4	2	0	15	4	2
Marketings .....	0.1	0.2	0	0	10	0	1

## Information Contacts

Listed below are the commodity specialists in the Livestock Branch of the National Agricultural Statistics Service to contact for additional information. E-mail inquiries may be sent to [nass@nass.usda.gov](mailto:nass@nass.usda.gov).

Travis Averill, Chief, Livestock Branch .....	(202) 720-3570
Scott Hollis, Head, Livestock Section .....	(202) 690-2424
Sherry Bertramsen – Livestock Slaughter .....	(202) 720-3240
Donnie Fike – Dairy Products .....	(202) 690-3236
Heidi Gleich – Cattle, Cattle on Feed .....	(202) 720-3040
Mike Miller – Milk Production and Milk Cows .....	(202) 720-3278
Seth Riggins – Hogs and Pigs .....	(202) 720-3106
Vacant – Sheep and Goats .....	(202) 720-8784



## Access to NASS Reports

For your convenience, you may access NASS reports and products the following ways:

- All reports are available electronically, at no cost, on the NASS web site: [www.nass.usda.gov](http://www.nass.usda.gov)
- Both national and state specific reports are available via a free e-mail subscription. To set-up this free subscription, visit [www.nass.usda.gov](http://www.nass.usda.gov) and click on “National” or “State” in upper right corner above “search” box to create an account and select the reports you would like to receive.

For more information on NASS surveys and reports, call the NASS Agricultural Statistics Hotline at (800) 727-9540, 7:30 a.m. to 4:00 p.m. ET, or e-mail: [nass@nass.usda.gov](mailto:nass@nass.usda.gov).

The U.S. Department of Agriculture (USDA) prohibits discrimination against its customers, employees, and applicants for employment on the basis of race, color, national origin, age, disability, sex, gender identity, religion, reprisal, and where applicable, political beliefs, marital status, familial or parental status, sexual orientation, or all or part of an individual's income is derived from any public assistance program, or protected genetic information in employment or in any program or activity conducted or funded by the Department. (Not all prohibited bases will apply to all programs and/or employment activities.)

If you wish to file a Civil Rights program complaint of discrimination, complete the [USDA Program Discrimination Complaint Form](#) (PDF), found online at [http://www.ascr.usda.gov/complaint\\_filing\\_cust.html](http://www.ascr.usda.gov/complaint_filing_cust.html), or at any USDA office, or call (866) 632-9992 to request the form. You may also write a letter containing all of the information requested in the form. Send your completed complaint form or letter to us by mail at U.S. Department of Agriculture, Director, Office of Adjudication, 1400 Independence Avenue, S.W., Washington, D.C. 20250-9410, by fax (202) 690-7442 or email at [program.intake@usda.gov](mailto:program.intake@usda.gov).



United States Department of Agriculture

# USDA's 94th Annual Agricultural Outlook Forum



# THE ROOTS OF PROSPERITY

February 22-23, 2018  
Crystal Gateway Marriott Hotel  
Arlington, Virginia

[www.usda.gov/oce/forum](http://www.usda.gov/oce/forum)