

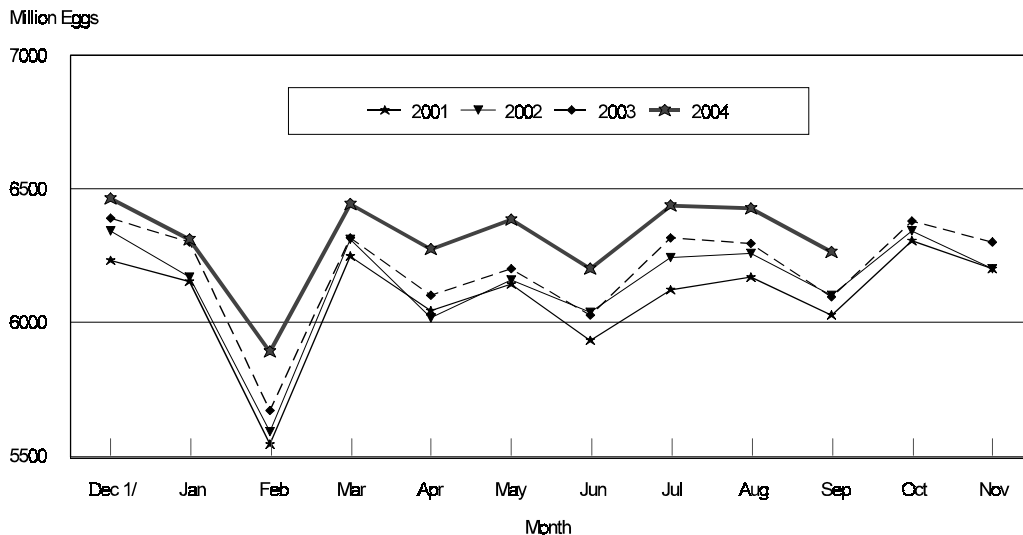
Released October 22, 2004, by the National Agricultural Statistics Service (NASS), Agricultural Statistics Board, U.S. Department of Agriculture. For information on *Chickens and Eggs* call Sharyn Lavender at (202) 720-3244, for "Hatch" call Jody Roberts at (202) 690-8632, office hours 7:30 a.m. to 4:00 p.m. ET.

September Egg Production Up 3 Percent

U.S. egg production totaled 7.32 billion during September 2004, up 3 percent from last year. Production included 6.26 billion table eggs, and 1.06 billion hatching eggs, of which 996 million were broiler-type and 60 million were egg-type. The total number of layers during September 2004 averaged 343 million, up 3 percent from a year earlier. September egg production per 100 layers was 2,133 eggs, up slightly from September 2003.

September 2004 and September 2003 both contained 22 weekdays, 4 Saturdays and 1 holiday.

Table Egg Production By Months United States, 2001 - 2004



1/ Previous Year

All layers in the U.S. on October 1, 2004, totaled 344 million, up 3 percent from a year ago. The 344 million layers consisted of 285 million layers producing table or market type eggs, 55.8 million layers producing broiler-type hatching eggs, and 2.61 million layers producing egg-type hatching eggs. Rate of lay per day on October 1, 2004, averaged 71.3 eggs per 100 layers, up slightly from a year ago.

Laying flocks in the 30 major egg producing States produced 6.84 billion eggs during September 2004, up 3 percent from a year ago. The average number of layers during September, at 321 million, was up 3 percent from a year ago.

Individual State estimates are available for the 30 major egg producing States. These States are listed on page 8 of this release and account for approximately 94 percent of the total U.S. egg production. Production for the other States are grouped into an "Other States" category and combined with the 30 States published individually to obtain a U.S. estimate.

Egg-Type Chicks Hatched Up 3 Percent

Egg-type chicks hatched during September totaled 36.8 million, up 3 percent from September 2003. Eggs in incubators totaled 33.7 million on October 1, 2004, up 13 percent from a year ago.

Domestic placements of egg-type pullet chicks for future hatchery supply flocks by leading breeders totaled 205,000 during September 2004, down 25 percent from September 2003.

Broiler Hatch Up 4 Percent

The September 2004 hatch of broiler-type chicks, at 770 million, was up 4 percent from September of the previous year. There were 617 million eggs in incubators on October 1, 2004, up 3 percent from a year earlier.

Leading breeders placed 7.76 million broiler-type pullet chicks for future domestic hatchery supply flocks during September 2004, up 17 percent from September 2003.

**All Layers: Average Number on Hand During the Month,
United States, 2001-04**

Month	2001	2002	2003	2004
	<i>1,000 Layers</i>	<i>1,000 Layers</i>	<i>1,000 Layers</i>	<i>1,000 Layers</i>
Dec ¹	333,488	341,243	340,316	338,243
Jan	334,982	340,885	340,910	337,749
Feb	337,008	339,529	340,575	338,942
Mar	338,078	339,434	339,885	341,000
Apr	338,414	338,809	338,182	341,912
May	336,454	337,566	336,164	342,085
Jun	334,237	337,339	334,789	342,140
Jul	333,571	337,849	334,179	341,660
Aug	334,156	338,397	334,332	342,034
Sep	336,651	339,511	334,198	343,120
Oct	338,996	340,461	335,333	
Nov	339,919	340,490	338,283	

¹ December preceding year.

**Eggs: Production During the Month by Type,
United States, 2003-04**

Month	Total Eggs		Table Eggs		Hatching Eggs	
	2003	2004	2003	2004	2003	2004
	<i>Million Eggs</i>	<i>Million Eggs</i>	<i>Million Eggs</i>	<i>Million Eggs</i>	<i>Million Eggs</i>	<i>Million Eggs</i>
Dec ¹	7,451	7,520	6,392	6,466	1,058	1,055
Jan	7,390	7,371	6,301	6,315	1,088	1,056
Feb	6,665	6,890	5,673	5,890	991	1,001
Mar	7,424	7,532	6,316	6,446	1,108	1,087
Apr	7,187	7,343	6,103	6,276	1,084	1,067
May	7,327	7,499	6,200	6,386	1,127	1,113
Jun	7,105	7,274	6,028	6,201	1,077	1,072
Jul	7,403	7,536	6,316	6,441	1,086	1,095
Aug	7,367	7,515	6,296	6,427	1,070	1,088
Sep	7,112	7,319	6,095	6,264	1,017	1,056
Oct	7,439		6,381		1,058	
Nov	7,326		6,301		1,025	
During Year	87,196	73,799	74,402	63,112	12,789	10,690

¹ December preceding year.

**Layers and Eggs: Layers on Hand and Eggs Produced by Type,
and Forced Molt, United States, August-September 2003-04**

Item	Unit	2003	2004	2004 as % of 2003
Layers During Aug	1,000			
All Layers		334,332	342,034	102
Table Egg Type		276,528	283,510	103
Hatching Egg Type		57,804	58,524	101
Broiler-Type Hatching		55,231	55,990	101
Egg-Type Hatching		2,573	2,534	98
Eggs per 100 Layers During Aug	Number			
All Layers		2,203	2,197	100
Table Egg Type		2,277	2,267	100
Hatching Egg Type		1,851	1,859	100
Broiler-Type Hatching		1,827	1,836	100
Egg-Type Hatching		2,371	2,368	100
Eggs Produced During Aug	Million			
All Layers		7,367	7,515	102
Table Egg Type		6,296	6,427	102
Hatching Egg Type		1,070	1,088	102
Broiler-Type Hatching		1,009	1,028	102
Egg-Type Hatching		61	60	98
Layers on Sep 1	1,000			
All Layers		334,248	342,456	102
Table Egg Type		276,881	284,042	103
Hatching Egg Type		57,367	58,414	102
Broiler-Type Hatching		54,865	55,775	102
Egg-Type Hatching		2,502	2,639	105
Eggs per 100 Layers on Sep 1	Number			
All Layers		70.6	70.8	100
Table Egg Type		72.9	73.0	100
Hatching Egg Type		59.2	59.9	101
Broiler-Type Hatching		58.4	59.1	101
Egg-Type Hatching		75.8	76.4	101
Forced Molt Layers on Sep 1	Percent			
Percent Being Molted		3.9	4.5	115
Percent with Molt Completed		22.8	23.4	103
Layers Sold for Slaughter During Aug	1,000	15,193	15,895	105
Layers Rendered, Died, Destroyed, Composted or Disappeared For Any Reason During Aug	1,000	6,719	5,804	86
Pullets Less Than 20 Weeks of Age, Sep 1	1,000	102,025	100,652	99
Pullets Added During Aug ¹	1,000	25,063	22,548	90

¹ Pullet chicks one day old added to pullet flocks.

**Layers and Eggs: Layers on Hand and Eggs Produced by Type,
and Forced Molt, United States, September-October 2003-04**

Item	Unit	2003 ¹	2004	2004 as % of 2003
Layers During Sep	1,000			
All Layers		334,198	343,120	103
Table Egg Type		276,911	284,680	103
Hatching Egg Type		57,287	58,440	102
Broiler-Type Hatching		54,852	55,815	102
Egg-Type Hatching		2,435	2,625	108
Eggs per 100 Layers During Sep	Number			
All Layers		2,128	2,133	100
Table Egg Type		2,201	2,200	100
Hatching Egg Type		1,775	1,807	102
Broiler-Type Hatching		1,752	1,784	102
Egg-Type Hatching		2,300	2,286	99
Eggs Produced During Sep	Million			
All Layers		7,112	7,319	103
Table Egg Type		6,095	6,264	103
Hatching Egg Type		1,017	1,056	104
Broiler-Type Hatching		961	996	104
Egg-Type Hatching		56	60	107
Layers on Oct 1	1,000			
All Layers		334,103	343,749	103
Table Egg Type		276,916	285,300	103
Hatching Egg Type		57,187	58,449	102
Broiler-Type Hatching		54,826	55,843	102
Egg-Type Hatching		2,361	2,606	110
Eggs per 100 Layers on Oct 1	Number			
All Layers		71.2	71.3	100
Table Egg Type		73.7	73.5	100
Hatching Egg Type		59.1	60.1	102
Broiler-Type Hatching		58.4	59.3	102
Egg-Type Hatching		75.6	77.6	103
Forced Molt Layers, Oct 1	Percent			
Percent Being Molted		5.2	3.9	75
Percent with Molt Completed		23.1	23.8	103
Layers Sold for Slaughter During Sep	1,000	14,548	15,827	109
Layers Rendered, Died, Destroyed, Composted or Disappeared For Any Reason During Sep	1,000	6,393	5,960	93
Pullets Less Than 20 Weeks of Age, Oct 1	1,000	102,268	98,052	96
Pullets Added During Sep ²	1,000	23,532	23,448	100

¹ Revised.

² Pullet chicks one day old added to pullet flocks.

Layers and Eggs: Layers on Hand and Eggs Produced by Type, and Forced Molt, 30 Selected States, August-September, 2003-04 ¹

Item	Unit	2003	2004	2004 as % of 2003
Layers During Aug	1,000			
All Layers		311,949	319,505	102
Table Egg Type		258,920	266,049	103
Hatching Egg Type		53,029	53,456	101
Broiler-Type Hatching		50,545	51,056	101
Egg-Type Hatching		2,484	2,400	97
Eggs per 100 Layers During Aug	Number			
All Layers		2,204	2,200	100
Table Egg Type		2,277	2,268	100
Hatching Egg Type		1,848	1,858	101
Broiler-Type Hatching		1,822	1,833	101
Egg-Type Hatching		2,375	2,375	100
Eggs Produced During Aug	Million			
All Layers		6,875	7,029	102
Table Egg Type		5,895	6,035	102
Hatching Egg Type		980	993	101
Broiler-Type Hatching		921	936	102
Egg-Type Hatching		59	57	97
Layers on Sep 1	1,000			
All Layers		311,903	319,835	103
Table Egg Type		259,284	266,488	103
Hatching Egg Type		52,619	53,347	101
Broiler-Type Hatching		50,206	50,841	101
Egg-Type Hatching		2,413	2,506	104
Eggs per 100 Layers on Sep 1	Number			
All Layers		70.6	70.9	100
Table Egg Type		72.9	73.0	100
Hatching Egg Type		59.1	60.0	102
Broiler-Type Hatching		58.3	59.1	101
Egg-Type Hatching		75.9	76.4	101
Forced Molt Layers on Sep 1	Percent			
Percent Being Molted		3.9	4.5	115
Percent with Molt Completed		22.5	23.1	103
Layers Sold for Slaughter During Aug	1,000	13,800	15,363	111
Layers Rendered, Died, Destroyed, Composted or Disappeared For Any Reason During Aug	1,000	6,437	5,630	87
Pullets Less Than 20 Weeks of Age, Sep 1	1,000	95,166	93,243	98
Pullets Added During Aug ²	1,000	23,141	21,524	93

¹ The 30 States are listed in the table on page 8.

² Pullet chicks one day old added to pullet flocks.

Layers and Eggs: Layers on Hand and Eggs Produced by Type, and Forced Molt, 30 Selected States, September-October, 2003-04 ¹

Item	Unit	2003 ²	2004	2004 as % of 2003
Layers During Sep	1,000			
All Layers		311,930	320,621	103
Table Egg Type		259,290	267,210	103
Hatching Egg Type		52,640	53,411	101
Broiler-Type Hatching		50,287	50,918	101
Egg-Type Hatching		2,353	2,493	106
Eggs per 100 Layers During Sep	1,000			
All Layers		2,129	2,134	100
Table Egg Type		2,201	2,200	100
Hatching Egg Type		1,776	1,803	102
Broiler-Type Hatching		1,752	1,779	102
Egg-Type Hatching		2,295	2,286	100
Eggs Produced During Sep	Million			
All Layers		6,641	6,842	103
Table Egg Type		5,706	5,879	103
Hatching Egg Type		935	963	103
Broiler-Type Hatching		881	906	103
Egg-Type Hatching		54	57	106
Layers on Oct 1	1,000			
All Layers		311,922	321,382	103
Table Egg Type		259,279	267,921	103
Hatching Egg Type		52,643	53,461	102
Broiler-Type Hatching		50,356	50,986	101
Egg-Type Hatching		2,287	2,475	108
Eggs per 100 Layers on Oct 1	Number			
All Layers		71.3	71.3	100
Table Egg Type		73.7	73.5	100
Hatching Egg Type		59.2	60.0	101
Broiler-Type Hatching		58.5	59.1	101
Egg-Type Hatching		75.9	77.6	102
Forced Molt Layers, Oct 1	Percent			
Percent Being Molted		5.2	3.8	73
Percent with Molt Completed		22.7	23.6	104
Layers Sold for Slaughter During Sep	1,000	13,473	14,954	111
Layers Rendered, Died, Destroyed, Composted or Disappeared For Any Reason During Sep	1,000	6,153	5,536	90
Pullets Less Than 20 Weeks of Age, Oct 1	1,000	95,174	90,719	95
Pullets Added During Sep ³	1,000	21,964	22,190	101

¹ The 30 States are listed in the table on page 8.

² Revised.

³ Pullet chicks one day old added to pullet flocks.

**Layers and Eggs: Layers on Hand and Eggs Produced by State
and United States, During August 2003-04**

State	Table Egg Layers in Flocks 30,000 and Above		All Layers ¹		Eggs per 100 for All Layers ¹	
	2003	2004	2003	2004	2003	2004
	<i>1,000</i>	<i>1,000</i>	<i>1,000</i>	<i>1,000</i>	<i>Number</i>	<i>Number</i>
AL	2,176	1,944	9,727	9,493	1,902	1,907
AR	4,392	3,898	14,824	13,980	1,916	1,888
CA	19,669	19,679	20,101	20,127	2,229	2,266
CO	3,276	3,361	3,753	3,898	2,371	2,437
CT	2,829	2,641	2,891	2,684	2,352	2,496
FL	10,280	10,963	10,812	11,464	2,229	2,259
GA	10,958	10,918	20,230	20,054	2,101	2,084
HI	469	458	505	497	1,980	2,012
IL	3,424	4,100	3,650	4,341	2,384	2,073
IN	21,709	23,645	22,328	24,411	2,244	2,188
IA	38,879	44,822	39,668	45,556	2,231	2,252
ME	4,172	2,756	4,224	2,808	2,344	2,493
MD	2,663	2,938	2,827	3,066	2,158	2,218
MI	6,837	7,337	7,088	7,588	2,243	2,267
MN	10,463	10,103	11,061	10,653	2,251	2,262
MS	1,843	1,684	6,823	6,853	1,949	1,999
MO	5,550	5,710	6,953	7,066	2,330	2,208
NE	11,708	11,549	11,808	11,624	2,304	2,297
NY	3,326	3,837	3,598	4,155	2,446	2,431
NC	3,372	3,277	10,500	10,757	1,990	1,962
OH	28,376	27,428	28,873	27,911	2,265	2,225
OK	1,936	1,906	4,081	4,134	1,887	1,959
OR	2,719	2,746	2,906	2,941	2,374	2,414
PA	22,219	22,182	23,983	23,964	2,342	2,366
SC	4,136	4,116	5,225	5,228	2,258	2,295
SD	3,043	3,321	3,243	3,521	2,313	2,244
TX	13,960	13,681	18,196	18,088	2,171	2,222
VA	1,100	1,198	3,022	3,113	1,952	1,960
WA	4,764	4,865	4,835	4,928	2,378	2,110
WI	3,702	4,092	4,214	4,602	2,278	2,173
30 Sts	253,950	261,155	311,949	319,505	2,204	2,200
Oth Sts ²	16,474	16,268	22,383	22,529	2,198	2,157
US	270,424	277,423	334,332	342,034	2,203	2,197

¹ Includes all layers and eggs produced in both table egg and hatching egg flocks regardless of size.

² Estimates for individual States are not available.

**Layers and Eggs: Layers on Hand and Eggs Produced by State
and United States, During September 2003-04**

State	Table Egg Layers in Flocks 30,000 and Above		All Layers ¹		Eggs per 100 for All Layers ¹	
	2003	2004	2003	2004	2003	2004
	<i>1,000</i>	<i>1,000</i>	<i>1,000</i>	<i>1,000</i>	<i>Number</i>	<i>Number</i>
AL	2,112	1,870	9,568	9,273	1,871	1,887
AR	4,229	4,026	14,628	14,187	1,846	1,875
CA	19,573	19,654	20,058	20,105	2,149	2,203
CO	3,351	3,391	3,856	3,938	2,256	2,336
CT	2,744	2,668	2,806	2,717	2,210	2,356
FL	10,337	10,912	10,852	11,379	2,129	2,188
GA	10,999	11,120	20,145	20,280	2,040	2,027
HI	463	461	499	501	1,944	1,896
IL	3,470	4,032	3,689	4,275	2,169	2,246
IN	21,938	23,084	22,613	23,885	2,162	2,135
IA	38,912	45,037	39,675	45,805	2,195	2,166
ME	4,135	2,770	4,181	2,821	2,344	2,410
MD	2,758	3,090	2,911	3,217	2,267	2,207
MI	6,691	7,376	6,942	7,627	2,233	2,150
MN	10,423	10,065	11,016	10,638	2,151	2,200
MS	1,855	1,662	6,795	6,922	1,898	1,921
MO	5,448	5,911	6,872	7,258	2,270	2,204
NE	11,747	11,760	11,847	11,835	2,212	2,188
NY	3,448	3,821	3,709	4,139	2,346	2,319
NC	3,387	3,331	10,442	10,819	1,925	1,913
OH	28,205	27,890	28,699	28,388	2,150	2,138
OK	1,935	1,933	4,066	4,114	1,820	1,920
OR	2,785	2,806	2,971	2,995	2,255	2,304
PA	22,313	22,049	24,019	23,774	2,250	2,255
SC	4,223	4,114	5,322	5,210	2,180	2,150
SD	3,158	3,204	3,358	3,404	2,233	2,233
TX	14,044	13,797	18,304	18,194	2,087	2,171
VA	1,142	1,229	3,022	3,098	1,853	1,969
WA	4,804	4,884	4,874	4,945	2,195	2,083
WI	3,683	4,368	4,191	4,878	2,243	2,132
30 Sts	254,312	262,315	311,930	320,621	2,129	2,134
Oth Sts ²	16,491	16,277	22,268	22,499	2,115	2,120
US	270,803	278,592	334,198	343,120	2,128	2,133

¹ Includes all layers and eggs produced in both table egg and hatching egg flocks regardless of size.

² Estimates for individual States are not available.

**Egg Production: By Type, State, and United States,
August 2003-04**

State	Total Production		Table Eggs ¹		Hatching Eggs ¹	
	2003	2004	2003	2004	2003	2004
	<i>Million Eggs</i>	<i>Million Eggs</i>	<i>Million Eggs</i>	<i>Million Eggs</i>	<i>Million Eggs</i>	<i>Million Eggs</i>
AL	185	181	49	43	136	138
AR	284	264	101	88	183	176
CA	448	456				
CO	89	95				
CT	68	67				
FL	241	259	231	251	10	8
GA	425	418	252	245	173	173
HI	10.0	10.0	10.0	10.0	0	0
IL	87	90	83	86	4	4
IN	501	534	490	522	11	12
IA	885	1,026				
ME	99	70				
MD	61	68	58	66	3	2
MI	159	172				
MN	249	241	240	233	9	8
MS	133	137	41	40	92	97
MO	162	156				
NE	272	267	272	267	0	0
NY	88	101				
NC	209	211	83	80	126	131
OH	654	621				
OK	77	81	44	45	33	36
OR	69	71	67	68	2	3
PA	562	567	546	550	16	17
SC	118	120	99	100	19	20
SD	75	79	75	79	0	0
TX	395	402				
VA	59	61	26	26	33	35
WA	115	104				
WI	96	100				
30 Sts	6,875	7,029	5,895	6,035	980	993
Oth Sts ²	492	486	401	392	90	95
US	7,367	7,515	6,296	6,427	1,070	1,088

¹ Data by type of flock not shown for some States to avoid disclosing individual operations.

² Estimates for individual States are not available.

**Egg Production: By Type, State, and United States,
September 2003-04**

State	Total Production		Table Eggs ¹		Hatching Eggs ¹	
	2003	2004	2003	2004	2003	2004
	<i>Million Eggs</i>	<i>Million Eggs</i>	<i>Million Eggs</i>	<i>Million Eggs</i>	<i>Million Eggs</i>	<i>Million Eggs</i>
AL	179	175	48	43	131	132
AR	270	266	94	92	176	174
CA	431	443				
CO	87	92				
CT	62	64				
FL	231	249	223	242	8	7
GA	411	411	245	243	166	168
HI	9.7	9.5	9.7	9.5	0	0
IL	80	96	77	92	3	4
IN	489	510	477	498	12	12
IA	871	992				
ME	98	68				
MD	66	71	64	69	2	2
MI	155	164				
MN	237	234	229	226	8	8
MS	129	133	41	38	88	95
MO	156	160				
NE	262	259	262	259	0	0
NY	87	96				
NC	201	207	80	80	121	127
OH	617	607				
OK	74	79	43	44	31	35
OR	67	69	65	67	2	2
PA	541	536	527	521	14	15
SC	116	112	97	93	19	19
SD	75	76	75	76	0	0
TX	382	395				
VA	56	61	26	27	30	34
WA	107	103				
WI	94	104				
30 Sts	6,641	6,842	5,706	5,879	935	963
Oth Sts ²	471	477	389	385	82	93
US	7,112	7,319	6,095	6,264	1,017	1,056

¹ Data by type of flock not shown for some States to avoid disclosing individual operations.

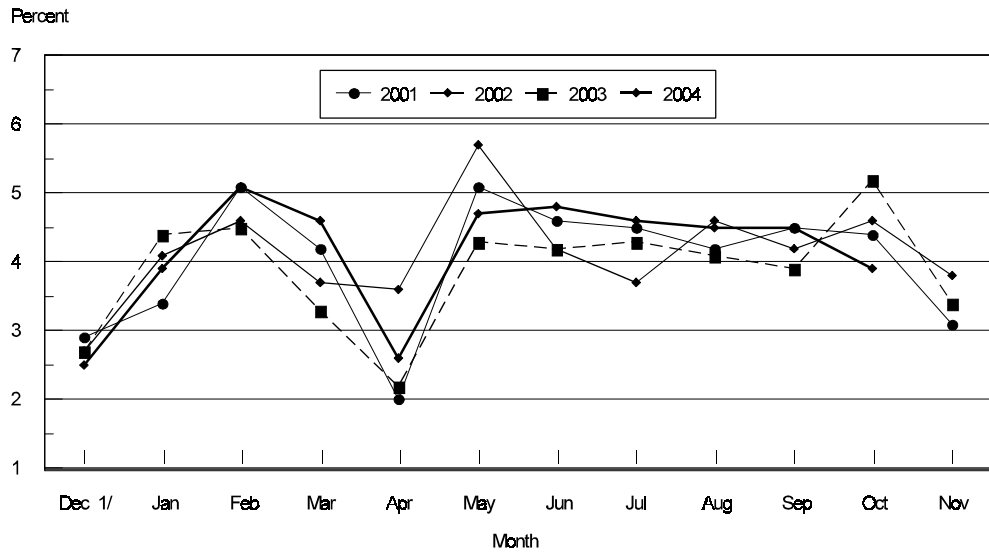
² Estimates for individual States are not available.

**Forced Molt: Percent of All Layers by Month,
United States, 2003-04¹**

Month	Percent Being Molted		Percent with Molt Completed	
	2003	2004	2003	2004
	<i>Percent</i>	<i>Percent</i>	<i>Percent</i>	<i>Percent</i>
Jan	4.4	3.9	23.7	22.4
Feb	4.5	4.9	24.0	22.8
Mar	3.3	4.6	23.7	23.3
Apr	2.2	2.6	24.6	23.5
May	4.3	4.7	23.5	22.3
Jun	4.2	4.8	23.4	23.3
Jul	4.3	4.6	23.9	24.0
Aug	4.1	4.5	23.5	23.4
Sep	3.9	4.5	22.8	23.4
Oct	5.2	3.9	23.1	23.8
Nov	3.4		24.1	
Dec	2.5		22.7	

¹ As of first of month.

**All Layers : United States
Percent Being Molted, 2001 - 2004
First of Month**



1/ Previous Year

**Forced Molt: Percent of All Layers by State
and United States, October 2003-04 ¹**

State	Percent Being Molted		Percent with Molt Completed	
	2003	2004	2003	2004
	<i>Percent</i>	<i>Percent</i>	<i>Percent</i>	<i>Percent</i>
AL	2.0	0.0	3.0	6.0
AR	2.5	1.5	10.5	10.5
CA	7.5	5.0	34.0	34.5
CO	4.5	1.5	24.5	23.5
CT	7.0	3.5	11.0	7.5
FL	4.5	3.5	28.5	24.0
GA	3.5	3.0	17.5	18.0
HI	5.0	4.5	51.5	49.0
IL	8.0	5.5	28.5	34.5
IN	6.0	4.5	33.0	32.0
IA	8.0	5.0	30.0	37.0
ME	0.0	0.0	0.0	0.0
MD	6.0	2.0	23.0	35.5
MI	5.0	5.5	27.0	33.0
MN	3.5	6.5	25.0	25.0
MS	2.0	2.0	12.0	11.0
MO	3.5	0.0	11.5	24.0
NE	9.5	6.5	21.5	16.0
NY	0.0	1.5	5.5	7.5
NC	0.5	1.0	12.0	9.5
OH	6.5	7.5	24.0	20.5
OK	0.0	0.5	8.5	5.0
OR	7.0	0.0	34.5	32.5
PA	5.0	1.0	20.5	15.0
SC	4.0	3.5	20.0	33.5
SD	2.0	10.0	21.0	27.5
TX	4.0	3.0	22.5	20.5
VA	0.5	0.0	17.5	12.0
WA	11.5	5.5	41.5	39.0
WI	7.0	6.5	28.5	33.5
30 Sts	5.2	3.8	22.7	23.6
Oth Sts ²	5.1	4.1	28.4	26.7
US	5.2	3.9	23.1	23.8

¹ As of first of month.

² Estimates for individual States are not available.

**Hatchery Production: Eggs in Incubators, Chicks Hatched,
and Placements by Type, United States, September-October 2003-04**

Item	2003	2004	2004 as % of 2003
	<i>1,000</i>	<i>1,000</i>	<i>Percent</i>
Egg-Type			
Eggs in Incubators on Oct 1	29,750	33,662	113
Chicks Hatched During Sep	35,763	36,750	103
Chicks Hatched Jan thru Sep	317,371	326,070	103
Pullets Hatched During Sep for Intended Placements in Hatchery Supply Flocks	273	205	75
7-18 Month Earlier ¹	2,887	3,212	111
Broiler-Type			
Eggs in Incubators on Oct 1	601,567	616,708	103
Chicks Hatched During Sep	739,481	769,865	104
Chicks Hatched Jan thru Sep	6,857,063	7,049,588	103
Pullets Hatched During Sep for Intended Placements in Hatchery Supply Flocks	6,654	7,758	117
7-15 Months Earlier ²	60,539	62,261	103

¹ 2004 includes pullet chicks hatched Mar 2003 through Feb 2004.

² 2004 includes pullet chicks hatched Jun 2003 through Feb 2004.

**Egg-Type Eggs in Incubators: By Region and United States,
October 1, 2003-04**

Geographic Division	2003	2004	2004 as % of 2003
	<i>1,000</i>	<i>1,000</i>	<i>Percent</i>
North Atlantic	5,398	5,581	103
E North Central	5,899	7,143	121
W North Central	6,791	6,820	100
South Atlantic	2,406	3,195	133
South Central	4,760	5,660	119
West	4,496	5,263	117
US	29,750	33,662	113

Regional Listing:

North Atlantic = CT, ME, MA, NH, NJ, NY, PA, RI, VT.

E North Central = IL, IN, MI, OH, WI.

W North Central = IA, KS, MN, MO, NE, ND, SD.

South Atlantic = DE, FL, GA, MD, NC, SC, VA, WV.

South Central = AL, AR, KY, LA, MS, OK, TN, TX.

West = AK, AZ, CA, CO, HI, ID, MT, NM, NV, OR, UT, WA, WY.

**Egg-Type Chicks Hatched: By State and United States,
September 2003-04**

State	September			Jan-Sep		
	2003	2004	2004 as % of 2003	2003	2004	2004 as % of 2003
	<i>1,000</i>	<i>1,000</i>	<i>Percent</i>	<i>1,000</i>	<i>1,000</i>	<i>Percent</i>
AR	836	777	93	7,527	7,493	100
FL	596	537	90	5,996	5,547	93
GA	2,371	2,339	99	21,620	21,383	99
IN	5,247	5,104	97	44,231	44,628	101
IA	6,365	5,743	90	53,587	54,707	102
MN	1,108	830	75	11,387	8,049	71
PA	5,308	5,141	97	39,816	45,891	115
Oth Sts ¹	13,932	16,279	117	133,207	138,372	104
US	35,763	36,750	103	317,371	326,070	103

¹ Not published separately to avoid disclosing data for individual operations.

Egg-Type Chicks Hatched: By Month, United States, 2002-04

Month	By Months				Cumulative			
	2002	2003	2004	2004 as % of 2003	2002	2003	2004	2004 as % of 2003
	<i>1,000</i>	<i>1,000</i>	<i>1,000</i>	<i>Percent</i>	<i>1,000</i>	<i>1,000</i>	<i>1,000</i>	<i>Percent</i>
Jan	35,655	33,521	35,350	105	35,655	33,521	35,350	105
Feb	34,473	30,510	32,078	105	70,128	64,031	67,428	105
Mar	36,985	36,775	37,530	102	107,113	100,806	104,958	104
Apr	38,096	37,804	37,514	99	145,209	138,610	142,472	103
May	38,760	37,631	38,631	103	183,969	176,241	181,103	103
Jun	35,144	36,602	38,066	104	219,113	212,843	219,169	103
Jul	35,581	35,566	34,127	96	254,694	248,409	253,296	102
Aug	35,689	33,199	36,024	109	290,383	281,608	289,320	103
Sep	35,742	35,763	36,750	103	326,125	317,371	326,070	103
Oct	32,157	34,812			358,282	352,183		
Nov	31,154	30,241			389,436	382,424		
Dec	32,113	33,645			421,549	416,069		

**Intended Placements: Egg-Type Pullet Chicks for Hatchery Supply
Flocks by Month and Total, United States, 2002-04¹**

Month	Pullet Chicks Hatched			2004 as % of 2003	Cumulative Potential Placements Relative to Current Supply Flocks 7-18 Months Earlier ²		
	2002	2003	2004		2003	2004	2005
	<i>1,000</i>	<i>1,000</i>	<i>1,000</i>	<i>Percent</i>	<i>1,000</i>	<i>1,000</i>	<i>1,000</i>
Jan	228	210	164	78	2,974	3,012	3,194
Feb	247	225	285	127	2,916	2,960	3,207
Mar	237	319	401	126	2,886	2,927	3,332
Apr	295	280	311	111	2,944	2,923	3,264
May	319	289	255	88	2,980	3,047	
Jun	221	309	212	69	2,946	3,139	
Jul	282	230	243	106	2,927	3,198	
Aug	221	188	313	166	2,909	3,152	
Sep	277	273	205	75	2,887	3,212	
Oct	186	310			2,969	3,294	
Nov	227	319			2,954	3,325	
Dec	187	246			2,924	3,291	
Total	2,927	3,198					

¹ Reported by leading breeders. Coverage may not be 100 percent. Includes expected pullet chicks from eggs sold during the preceding month at the rate of 125 pullet chicks per 30 dozen case of eggs.

² For September 2004, includes breeder pullet chicks hatched Mar 2003 through Feb 2004. The 7-18 months represent the first laying cycle. Molting and additional laying cycles will increase the cumulative potential placements.

**Broiler-Type Eggs in Incubators: By Region
and United States, October 1, 2003-04**

Geographic Division	2003	2004	2004 as % of 2003
	<i>1,000</i>	<i>1,000</i>	<i>Percent</i>
North Atlantic	11,389	11,666	102
E North Central	8,105	8,688	107
W North Central	20,767	21,717	105
South Atlantic	218,573	221,820	101
South Central	322,949	329,897	102
West	19,784	22,920	116
US	601,567	616,708	103

**Broiler-Type Chicks Hatched: By State
and United States, September 2003-04**

State	September			Jan-Sep		
	2003	2004	2004 as % of 2003	2003	2004	2004 as % of 2003
	<i>1,000</i>	<i>1,000</i>	<i>Percent</i>	<i>1,000</i>	<i>1,000</i>	<i>Percent</i>
AL	103,395	107,539	104	928,156	988,969	107
AR	107,587	111,459	104	986,068	1,016,791	103
DE	13,431	13,232	99	117,849	122,142	104
FL	4,801	4,746	99	47,561	43,834	92
GA	113,442	117,942	104	1,029,580	1,074,106	104
KY	24,135	24,811	103	216,553	228,764	106
LA	13,212	13,859	105	122,769	123,959	101
MD	32,131	30,608	95	306,910	282,730	92
MS	67,410	70,087	104	626,934	645,085	103
NC	59,203	63,049	106	586,747	591,735	101
OK	21,767	23,257	107	204,848	211,864	103
PA	12,313	13,340	108	113,476	117,911	104
SC	15,584	14,361	92	148,536	121,333	82
TX	51,638	54,142	105	478,797	491,582	103
VA	22,312	23,441	105	212,371	214,055	101
CA, MO, TN, & WV	56,433	62,409	111	533,861	571,142	107
19 Sts ¹	718,794	748,282	104	6,661,016	6,846,002	103
Oth Sts ²	20,687	21,583	104	196,047	203,586	104
US	739,481	769,865	104	6,857,063	7,049,588	103

¹ States in the weekly hatchery production estimating program.

² Not published separately to avoid disclosing data for individual operations.

Broiler-Type Chicks Hatched: By Month, United States, 2002-04

Month	By Months				Cumulative			
	2002	2003	2004	2004 as % of 2003	2002	2003	2004	2004 as % of 2003
	<i>1,000</i>	<i>1,000</i>	<i>1,000</i>	<i>Percent</i>	<i>1,000</i>	<i>1,000</i>	<i>1,000</i>	<i>Percent</i>
Jan	776,961	759,674	773,970	102	776,961	759,674	773,970	102
Feb	703,323	693,549	727,936	105	1,480,284	1,453,223	1,501,906	103
Mar	791,093	774,354	791,149	102	2,271,377	2,227,577	2,293,055	103
Apr	765,457	760,638	774,452	102	3,036,834	2,988,215	3,067,507	103
May	799,288	792,813	809,725	102	3,836,122	3,781,028	3,877,232	103
Jun	776,343	774,679	785,844	101	4,612,465	4,555,707	4,663,076	102
Jul	781,701	777,838	806,827	104	5,394,166	5,333,545	5,469,903	103
Aug	780,030	784,037	809,820	103	6,174,196	6,117,582	6,279,723	103
Sep	740,388	739,481	769,865	104	6,914,584	6,857,063	7,049,588	103
Oct	720,564	734,961			7,635,148	7,592,024		
Nov	690,061	707,627			8,325,209	8,299,651		
Dec	753,883	780,094			9,079,092	9,079,745		

**Intended Placements: Broiler-Type Pullet Chicks for Hatchery
Supply Flocks by Month and Total, 2002-04 ¹**

Month	Pullet Chicks Hatched			2004 as % of 2003	Cumulative Potential Placements Relative to Current Supply Flocks 7-15 Months Earlier ²		
	2002	2003	2004		2003	2004	2005
	<i>1,000</i>	<i>1,000</i>	<i>1,000</i>	<i>Percent</i>	<i>1,000</i>	<i>1,000</i>	<i>1,000</i>
US Place- ments							
Jan	6,264	6,269	6,811	109	62,473	60,450	61,823
Feb	7,275	6,659	7,340	110	62,371	61,256	62,345
Mar	6,775	7,038	6,815	97	62,559	61,719	62,679
Apr	6,814	6,735	6,402	95	62,658	61,898	63,459
May	7,597	7,323	7,492	102	62,659	61,941	
Jun	7,206	6,748	6,727	100	62,322	62,228	
Jul	6,602	7,071	6,834	97	62,022	62,168	
Aug	7,449	7,401	7,280	98	61,477	62,244	
Sep	6,676	6,654	7,758	117	60,539	62,261	
Oct	6,265	6,312			60,371	62,328	
Nov	6,938	6,946			60,504	61,659	
Dec	6,475	6,978			60,378	61,750	
Annual Total	82,336	82,134					
Total Place- ments ³							
Jan	7,415	7,388	7,812	106			
Feb	8,491	8,094	8,251	102			
Mar	7,997	8,549	7,801	91			
Apr	8,119	8,062	7,288	90			
May	8,982	8,604	8,596	100			
Jun	8,802	8,341	8,100	97			
Jul	8,083	8,555	8,149	95			
Aug	8,913	8,756	8,416	96			
Sep	8,002	8,338	9,184	110			
Oct	7,438	7,695					
Nov	8,202	8,246					
Dec	8,016	8,185					
Annual Total	98,460	98,813					

¹ Reported by leading breeders. Coverage may not be 100 percent. Includes expected pullet chicks from eggs sold during the preceding month at the rate of 125 pullet chicks per 30 dozen case of eggs.

² For Sep 2004, includes breeder pullet chicks hatched Jun 2003 through Feb 2004.

³ U.S. production of intended placements worldwide.

Procedures and Reliability

Data Sources: Primary data for the "**Chickens and Eggs**" report are from weekly and/or monthly questionnaires sent to producers. An attempt is made to collect information for layer and egg estimates from each known contractor and independent producer who has over 30,000 table egg layers. Coverage for operations with less than 30,000 table egg layers are estimated each month based on data reported in December. Approximately 900 contractors, independent egg producers, and started pullet operations are contacted each month. All known hatcheries, approximately 330, are contacted for information on a weekly and/or monthly basis.

Revisions: The previous month's estimates are subject to revision if late reports or corrected data indicates a different level. Additionally, revisions needed after the monthly report will be made at the end of the marketing year and published in the annual summaries of "**Chickens and Eggs Summary**" and "**Hatchery Production**".

Procedures and Reliability: Operations are mailed a questionnaire and given adequate time to respond by mail. Those that do not respond are phoned. Great care is exercised to ensure that all operations are accounted for during each survey period. However, there are usually missing reports that must be accounted for in the estimates.

Sound statistical methodology is employed to derive estimates from the reported data. All data are checked for unusual values. All operations' data are compared to their own past operating profiles and also to trends from other operations. Data for missing operations are estimated based on similar operations or historical data. Survey data are subject to non-sampling errors such as omissions and mistakes in reporting and in processing. While these errors cannot be measured directly, they are minimized by reviewing all data for consistency and reasonableness.

Egg-type chicks hatched are comprised of all chicks of egg-type domesticated breeds including males and chicks destined for hatchery supply flocks and research purposes. The relationship of chicks hatched to chicken inventory and poultry marketings is carefully monitored. The disposition of egg-type chicks hatched prior to placement into the laying flock can vary significantly, which can make comparisons to changes in layer inventory inconsistent over time.

Intended placement data reported by leading breeders include pullet chicks expected from eggs sold the preceding month. The breeders in this report account for a large percentage of replacement pullets for hatchery supply flocks. Production of replacement pullets by these breeders indicates the number of pullets available to hatchery supply flocks several months before the pullets will actually move into the flocks. "Hatchery Supply Flocks" include all generations of layers which could lay eggs to supply a hatchery. This includes the generations of parents, grandparents, great-grandparents, pedigree, etc. Also included are research flocks, vaccine flocks, and specific pathogen-free flocks. The broiler cumulative potential placements are a moving total of the intended placements 7-15 months earlier. The egg-type cumulative potential placements of 7-18 months represent the first laying cycle. Molting and additional laying cycles will increase the cumulative potential placements of egg-type hatching flocks.

ACCESS TO REPORTS!!

For your convenience, there are several ways to obtain NASS reports, data products, and services:

INTERNET ACCESS

All NASS reports are available free of charge on the worldwide Internet. For access, connect to the Internet and go to the NASS Home Page at: www.usda.gov/nass/. Select "Today's Reports" or Publications and then Reports Calendar or Publications and then Search, by Title or Subject.

E-MAIL SUBSCRIPTION

All NASS reports are available by subscription free of charge direct to your e-mail address. Starting with the NASS Home Page at www.usda.gov/nass/, click on **Publications**, then click on the **Subscribe by E-mail** button which takes you to the page describing e-mail delivery of reports. Finally, click on **Go to the Subscription Page** and follow the instructions.

PRINTED REPORTS OR DATA PRODUCTS

CALL OUR TOLL-FREE ORDER DESK: 800-999-6779 (U.S. and Canada)
Other areas, please call 703-605-6220 FAX: 703-605-6900
(Visa, MasterCard, check, or money order acceptable for payment.)

ASSISTANCE

For **assistance** with general agricultural statistics or further information about NASS or its products or services, contact the **Agricultural Statistics Hotline** at **800-727-9540**, 7:30 a.m. to 4:00 p.m. ET, or e-mail: nass@nass.usda.gov.

The United States Department of Agriculture (USDA) prohibits discrimination in all its programs on the basis of race, color, national origin, gender, religion, age, disability, political beliefs, sexual orientation, and marital or family status. (Not all prohibited bases apply to all programs.) Persons with disabilities who require alternative means for communication of program information (braille, large print, audiotape, etc.) should contact the USDA's TARGET Center at 202-720-2600 (voice and TDD).

To file a complaint of discrimination, write USDA, Director, Office of Civil Rights, Room 326-W, Whitten Building, 1400 Independence Avenue, SW, Washington, D.C., 20250-9410, or call 202-720-5964 (voice or TDD). USDA is an equal opportunity provider and employer.