

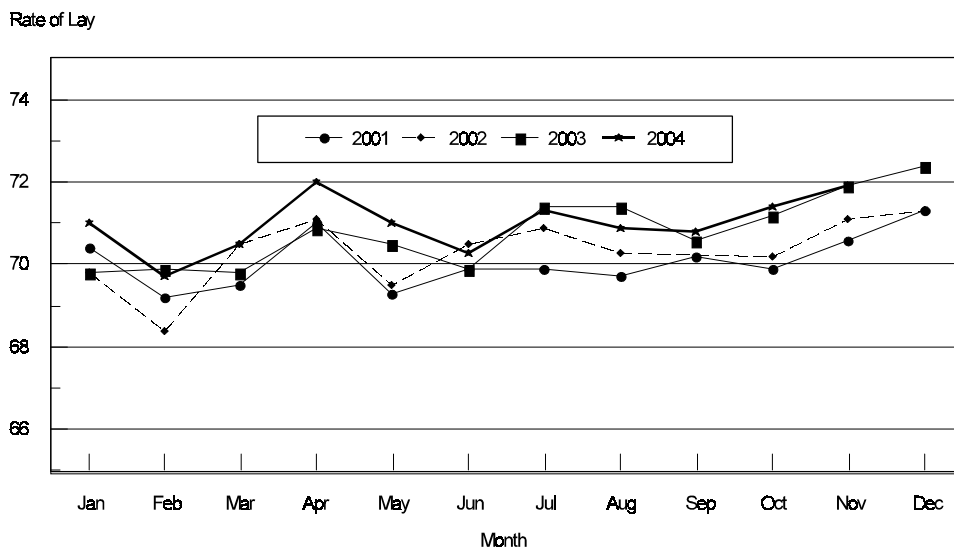
Released November 22, 2004, by the National Agricultural Statistics Service (NASS), Agricultural Statistics Board, U.S. Department of Agriculture. For information on *Chickens and Eggs* call Sharyn Lavender at (202) 720-3244, for "Hatch" call Jody Roberts at (202) 690-8632, office hours 7:30 a.m. to 4:00 p.m. ET.

October Egg Production Up 3 Percent

U.S. egg production totaled 7.64 billion during October 2004, up 3 percent from last year. Production included 6.56 billion table eggs, and 1.08 billion hatching eggs, of which 1.02 billion were broiler-type and 62 million were egg-type. The total number of layers during October 2004 averaged 344 million, up 3 percent from a year earlier. October egg production per 100 layers was 2,221 eggs, up slightly from October 2003.

October 2004 contained 21 weekdays, 5 Saturdays and 1 holiday compared to October 2003 contained 23 weekdays, 4 Saturdays and 1 holiday.

All Layers: 1st of Month Rate of Lay
United States, 2001 - 2004
Eggs Per 100 Layers



All layers in the U.S. on November 1, 2004, totaled 344 million, up 2 percent from a year ago. The 344 million layers consisted of 287 million layers producing table or market type eggs, 55.5 million layers producing broiler-type hatching eggs, and 2.50 million layers producing egg-type hatching eggs. Rate of lay per day on November 1, 2004, averaged 71.8 eggs per 100 layers, down slightly from a year ago.

Laying flocks in the 30 major egg producing States produced 7.15 billion eggs during October 2004, up 3 percent from a year ago. The average number of layers during October, at 322 million, was up 3 percent from a year ago.

Individual State estimates are available for the 30 major egg producing States. These States are listed on page 8 of this release and account for approximately 94 percent of the total U.S. egg production. Production for the other States are grouped into an "Other States" category and combined with the 30 States published individually to obtain a U.S. estimate.

Egg-Type Chicks Hatched Up 3 Percent

Egg-type chicks hatched during October totaled 36.0 million, up 3 percent from October 2003. Eggs in incubators totaled 37.0 million on November 1, 2004, up 27 percent from a year ago.

Domestic placements of egg-type pullet chicks for future hatchery supply flocks by leading breeders totaled 268,000 during October 2004, down 14 percent from October 2003.

Broiler Hatch Up 3 Percent

The October 2004 hatch of broiler-type chicks, at 758 million, was up 3 percent from October of the previous year. There were 608 million eggs in incubators on November 1, 2004, up 3 percent from a year earlier.

Leading breeders placed 6.59 million broiler-type pullet chicks for future domestic hatchery supply flocks during October 2004, up 4 percent from October 2003.

**All Layers: Average Number on Hand During the Month,
United States, 2001-04**

Month	2001	2002	2003	2004
	<i>1,000 Layers</i>	<i>1,000 Layers</i>	<i>1,000 Layers</i>	<i>1,000 Layers</i>
Dec ¹	333,488	341,243	340,316	338,243
Jan	334,982	340,885	340,910	337,749
Feb	337,008	339,529	340,575	338,942
Mar	338,078	339,434	339,885	341,000
Apr	338,414	338,809	338,182	341,912
May	336,454	337,566	336,164	342,085
Jun	334,237	337,339	334,789	342,140
Jul	333,571	337,849	334,179	341,660
Aug	334,156	338,397	334,332	342,034
Sep	336,651	339,511	334,198	343,169
Oct	338,996	340,461	335,333	344,194
Nov	339,919	340,490	338,283	

¹ December preceding year.

**Eggs: Production During the Month by Type,
United States, 2003-04**

Month	Total Eggs		Table Eggs		Hatching Eggs	
	2003	2004	2003	2004	2003	2004
	<i>Million Eggs</i>	<i>Million Eggs</i>	<i>Million Eggs</i>	<i>Million Eggs</i>	<i>Million Eggs</i>	<i>Million Eggs</i>
Dec ¹	7,451	7,520	6,392	6,466	1,058	1,055
Jan	7,390	7,371	6,301	6,315	1,088	1,056
Feb	6,665	6,890	5,673	5,890	991	1,001
Mar	7,424	7,532	6,316	6,446	1,108	1,087
Apr	7,187	7,343	6,103	6,276	1,084	1,067
May	7,327	7,499	6,200	6,386	1,127	1,113
Jun	7,105	7,274	6,028	6,201	1,077	1,072
Jul	7,403	7,536	6,316	6,441	1,086	1,095
Aug	7,367	7,515	6,296	6,427	1,070	1,088
Sep	7,112	7,324	6,095	6,269	1,017	1,056
Oct	7,439	7,643	6,381	6,559	1,058	1,084
Nov	7,326		6,301		1,025	
During Year	87,196	81,447	74,404	69,676	12,789	11,774

¹ December preceding year.

**Layers and Eggs: Layers on Hand and Eggs Produced by Type,
and Forced Molt, United States, September-October 2003-04**

Item	Unit	2003	2004	2004 as % of 2003
Layers During Sep	1,000			
All Layers		334,198	343,169	103
Table Egg Type		276,911	284,721	103
Hatching Egg Type		57,287	58,448	102
Broiler-Type Hatching		54,852	55,823	102
Egg-Type Hatching		2,435	2,625	108
Eggs per 100 Layers During Sep	Number			
All Layers		2,128	2,134	100
Table Egg Type		2,201	2,202	100
Hatching Egg Type		1,775	1,807	102
Broiler-Type Hatching		1,752	1,784	102
Egg-Type Hatching		2,300	2,286	99
Eggs Produced During Sep	Million			
All Layers		7,112	7,324	103
Table Egg Type		6,095	6,269	103
Hatching Egg Type		1,017	1,056	104
Broiler-Type Hatching		961	996	104
Egg-Type Hatching		56	60	107
Layers on Oct 1	1,000			
All Layers		334,103	343,845	103
Table Egg Type		276,916	285,381	103
Hatching Egg Type		57,187	58,464	102
Broiler-Type Hatching		54,826	55,858	102
Egg-Type Hatching		2,361	2,606	110
Eggs per 100 Layers on Oct 1	Number			
All Layers		71.2	71.4	100
Table Egg Type		73.7	73.6	100
Hatching Egg Type		59.1	60.1	102
Broiler-Type Hatching		58.4	59.3	102
Egg-Type Hatching		75.6	77.6	103
Forced Molt Layers on Oct 1	Percent			
Percent Being Molted		5.2	3.8	73
Percent with Molt Completed		23.1	23.8	103
Layers Sold for Slaughter During Sep	1,000	14,548	15,842	109
Layers Rendered, Died, Destroyed, Composted or Disappeared For Any Reason During Sep	1,000	6,393	5,961	93
Pullets Less Than 20 Weeks of Age, Oct 1	1,000	102,268	98,134	96
Pullets Added During Sep ¹	1,000	23,532	23,463	100

¹ Pullet chicks one day old added to pullet flocks.

**Layers and Eggs: Layers on Hand and Eggs Produced by Type,
and Forced Molt, United States, October-November 2003-04**

Item	Unit	2003	2004	2004 as % of 2003
Layers During Oct	1,000			
All Layers		335,333	344,194	103
Table Egg Type		278,138	285,958	103
Hatching Egg Type		57,195	58,236	102
Broiler-Type Hatching		54,763	55,679	102
Egg-Type Hatching		2,432	2,557	105
Eggs per 100 Layers During Oct	Number			
All Layers		2,218	2,221	100
Table Egg Type		2,294	2,294	100
Hatching Egg Type		1,850	1,861	101
Broiler-Type Hatching		1,828	1,836	100
Egg-Type Hatching		2,344	2,425	103
Eggs Produced During Oct	Million			
All Layers		7,439	7,643	103
Table Egg Type		6,381	6,559	103
Hatching Egg Type		1,058	1,084	102
Broiler-Type Hatching		1,001	1,022	102
Egg-Type Hatching		57	62	109
Layers on Nov 1	1,000			
All Layers		336,528	344,492	102
Table Egg Type		279,338	286,507	103
Hatching Egg Type		57,190	57,985	101
Broiler-Type Hatching		54,692	55,486	101
Egg-Type Hatching		2,498	2,499	100
Eggs per 100 Layers on Nov 1	Number			
All Layers		71.9	71.8	100
Table Egg Type		74.3	74.2	100
Hatching Egg Type		60.1	59.7	99
Broiler-Type Hatching		59.5	58.8	99
Egg-Type Hatching		74.8	79.8	107
Forced Molt Layers, Nov 1	Percent			
Percent Being Molted		3.4	4.3	126
Percent with Molt Completed		24.1	23.5	98
Layers Sold for Slaughter During Oct	1,000	13,485	13,535	100
Layers Rendered, Died, Destroyed, Composted or Disappeared For Any Reason During Oct	1,000	6,278	6,035	96
Pullets Less Than 20 Weeks of Age, Nov 1	1,000	102,207	99,695	98
Pullets Added During Oct ¹	1,000	25,018	24,662	99

¹ Pullet chicks one day old added to pullet flocks.

Layers and Eggs: Layers on Hand and Eggs Produced by Type, and Forced Molt, 30 Selected States, September-October, 2003-04 ¹

Item	Unit	2003	2004	2004 as % of 2003
Layers During Sep	1,000			
All Layers		311,930	320,670	103
Table Egg Type		259,290	267,251	103
Hatching Egg Type		52,640	53,419	101
Broiler-Type Hatching		50,287	50,926	101
Egg-Type Hatching		2,353	2,493	106
Eggs per 100 Layers During Sep	Number			
All Layers		2,129	2,135	100
Table Egg Type		2,201	2,202	100
Hatching Egg Type		1,776	1,803	102
Broiler-Type Hatching		1,752	1,779	102
Egg-Type Hatching		2,295	2,286	100
Eggs Produced During Sep	Million			
All Layers		6,641	6,847	103
Table Egg Type		5,706	5,884	103
Hatching Egg Type		935	963	103
Broiler-Type Hatching		881	906	103
Egg-Type Hatching		54	57	106
Layers on Oct 1	1,000			
All Layers		311,922	321,478	103
Table Egg Type		259,279	268,002	103
Hatching Egg Type		52,643	53,476	102
Broiler-Type Hatching		50,356	51,001	101
Egg-Type Hatching		2,287	2,475	108
Eggs per 100 Layers on Oct 1	Number			
All Layers		71.3	71.4	100
Table Egg Type		73.7	73.6	100
Hatching Egg Type		59.2	60.0	101
Broiler-Type Hatching		58.5	59.1	101
Egg-Type Hatching		75.9	77.6	102
Forced Molt Layers on Oct 1	Percent			
Percent Being Molted		5.2	3.8	73
Percent with Molt Completed		22.7	23.6	104
Layers Sold for Slaughter During Sep	1,000	13,473	14,970	111
Layers Rendered, Died, Destroyed, Composted or Disappeared For Any Reason During Sep	1,000	6,153	5,537	90
Pullets Less Than 20 Weeks of Age, Oct 1	1,000	95,174	90,801	95
Pullets Added During Sep ²	1,000	21,964	22,205	101

¹ The 30 States are listed in the table on page 8.

² Pullet chicks one day old added to pullet flocks.

Layers and Eggs: Layers on Hand and Eggs Produced by Type, and Forced Molt, 30 Selected States, October-November, 2003-04 ¹

Item	Unit	2003 ²	2004	2004 as % of 2003
Layers During Oct	1,000			
All Layers		313,041	321,901	103
Table Egg Type		260,424	268,668	103
Hatching Egg Type		52,617	53,233	101
Broiler-Type Hatching		50,268	50,802	101
Egg-Type Hatching		2,349	2,431	103
Eggs per 100 Layers During Oct	1,000			
All Layers		2,220	2,222	100
Table Egg Type		2,294	2,295	100
Hatching Egg Type		1,853	1,852	100
Broiler-Type Hatching		1,830	1,825	100
Egg-Type Hatching		2,341	2,427	104
Eggs Produced During Oct	Million			
All Layers		6,948	7,154	103
Table Egg Type		5,973	6,167	103
Hatching Egg Type		975	986	101
Broiler-Type Hatching		920	927	101
Egg-Type Hatching		55	59	107
Layers on Nov 1	1,000			
All Layers		314,132	322,284	103
Table Egg Type		261,552	269,315	103
Hatching Egg Type		52,580	52,969	101
Broiler-Type Hatching		50,173	50,591	101
Egg-Type Hatching		2,407	2,378	99
Eggs per 100 Layers on Nov 1	Number			
All Layers		71.9	71.9	100
Table Egg Type		74.2	74.3	100
Hatching Egg Type		60.2	59.4	99
Broiler-Type Hatching		59.5	58.5	98
Egg-Type Hatching		74.8	79.6	106
Forced Molt Layers, Nov 1	Percent			
Percent Being Molted		3.5	4.2	120
Percent with Molt Completed		23.8	23.4	98
Layers Sold for Slaughter During Oct	1,000	12,650	12,771	101
Layers Rendered, Died, Destroyed, Composted or Disappeared For Any Reason During Oct	1,000	5,815	5,555	96
Pullets Less Than 20 Weeks of Age, Nov 1	1,000	95,012	91,813	97
Pullets Added During Oct ³	1,000	23,709	22,914	97

¹ The 30 States are listed in the table on page 8.

² Revised.

³ Pullet chicks one day old added to pullet flocks.

**Layers and Eggs: Layers on Hand and Eggs Produced by State
and United States, During September 2003-04**

State	Table Egg Layers in Flocks 30,000 and Above		All Layers ¹		Eggs per 100 for All Layers ¹	
	2003	2004	2003	2004	2003	2004
	<i>1,000</i>	<i>1,000</i>	<i>1,000</i>	<i>1,000</i>	<i>Number</i>	<i>Number</i>
AL	2,112	1,870	9,568	9,273	1,871	1,887
AR	4,229	4,026	14,628	14,195	1,846	1,874
CA	19,573	19,654	20,058	20,105	2,149	2,203
CO	3,351	3,391	3,856	3,938	2,256	2,336
CT	2,744	2,668	2,806	2,717	2,210	2,356
FL	10,337	10,912	10,852	11,379	2,129	2,188
GA	10,999	11,120	20,145	20,280	2,040	2,027
HI	463	461	499	501	1,944	1,896
IL	3,470	4,032	3,689	4,275	2,169	2,246
IN	21,938	23,084	22,613	23,885	2,162	2,135
IA	38,912	45,037	39,675	45,805	2,195	2,166
ME	4,135	2,770	4,181	2,821	2,344	2,410
MD	2,758	3,090	2,911	3,217	2,267	2,207
MI	6,691	7,376	6,942	7,627	2,233	2,150
MN	10,423	10,065	11,016	10,638	2,151	2,200
MS	1,855	1,662	6,795	6,922	1,898	1,921
MO	5,448	5,911	6,872	7,258	2,270	2,204
NE	11,747	11,760	11,847	11,835	2,212	2,188
NY	3,448	3,821	3,709	4,139	2,346	2,319
NC	3,387	3,331	10,442	10,819	1,925	1,913
OH	28,205	27,890	28,699	28,388	2,150	2,138
OK	1,935	1,933	4,066	4,114	1,820	1,920
OR	2,785	2,806	2,971	2,995	2,255	2,304
PA	22,313	22,049	24,019	23,774	2,250	2,255
SC	4,223	4,114	5,322	5,210	2,180	2,150
SD	3,158	3,204	3,358	3,404	2,233	2,233
TX	14,044	13,797	18,304	18,194	2,087	2,171
VA	1,142	1,229	3,022	3,098	1,853	1,969
WA	4,804	4,925	4,874	4,986	2,195	2,166
WI	3,683	4,368	4,191	4,878	2,243	2,132
30 Sts	254,312	262,356	311,930	320,670	2,129	2,135
Oth Sts ²	16,491	16,277	22,268	22,499	2,115	2,120
US	270,803	278,633	334,198	343,169	2,128	2,134

¹ Includes all layers and eggs produced in both table egg and hatching egg flocks regardless of size.

² Estimates for individual States are not available.

**Layers and Eggs: Layers on Hand and Eggs Produced by State
and United States, During October 2003-04**

State	Table Egg Layers in Flocks 30,000 and Above		All Layers ¹		Eggs per 100 for All Layers ¹	
	2003	2004	2003	2004	2003	2004
	<i>1,000</i>	<i>1,000</i>	<i>1,000</i>	<i>1,000</i>	<i>Number</i>	<i>Number</i>
AL	2,084	1,885	9,436	9,233	1,939	1,939
AR	4,293	4,173	14,778	14,390	1,929	1,932
CA	19,610	20,048	20,144	20,578	2,264	2,289
CO	3,347	3,473	3,790	4,015	2,401	2,291
CT	2,805	2,794	2,869	2,844	2,266	2,426
FL	10,393	10,863	10,926	11,302	2,252	2,309
GA	11,138	11,227	20,200	20,323	2,139	2,140
HI	464	465	500	502	1,980	1,972
IL	3,545	3,964	3,762	4,206	2,286	2,378
IN	21,702	22,448	22,396	23,238	2,259	2,276
IA	39,322	45,434	40,094	46,197	2,369	2,260
ME	4,139	2,729	4,184	2,781	2,414	2,229
MD	2,783	3,074	2,928	3,215	2,425	2,208
MI	6,618	7,363	6,869	7,614	2,358	2,246
MN	10,285	10,188	10,880	10,771	2,206	2,265
MS	1,851	1,696	6,760	7,007	1,982	1,955
MO	5,297	6,031	6,713	7,303	2,383	2,328
NE	11,698	11,969	11,798	12,044	2,297	2,233
NY	3,437	3,733	3,697	4,054	2,407	2,467
NC	3,416	3,355	10,576	10,826	1,995	1,977
OH	28,479	27,989	28,969	28,467	2,171	2,234
OK	1,943	1,916	4,046	4,016	1,928	1,967
OR	2,835	2,785	3,027	2,974	2,346	2,387
PA	22,709	22,126	24,409	23,835	2,302	2,333
SC	4,252	4,128	5,408	5,222	2,219	2,202
SD	3,154	3,199	3,354	3,399	2,266	2,354
TX	14,196	14,119	18,454	18,515	2,146	2,220
VA	1,139	1,312	2,990	3,163	1,973	2,150
WA	4,802	4,956	4,872	5,017	2,258	2,452
WI	3,703	4,334	4,212	4,850	2,327	2,247
30 Sts	255,439	263,776	313,041	321,901	2,220	2,222
Oth Sts ²	16,588	16,097	22,292	22,293	2,203	2,194
US	272,027	279,873	335,333	344,194	2,218	2,221

¹ Includes all layers and eggs produced in both table egg and hatching egg flocks regardless of size.

² Estimates for individual States are not available.

**Egg Production: By Type, State, and United States,
September 2003-04**

State	Total Production		Table Eggs ¹		Hatching Eggs ¹	
	2003	2004	2003	2004	2003	2004
	<i>Million Eggs</i>	<i>Million Eggs</i>	<i>Million Eggs</i>	<i>Million Eggs</i>	<i>Million Eggs</i>	<i>Million Eggs</i>
AL	179	175	48	43	131	132
AR	270	266	94	92	176	174
CA	431	443				
CO	87	92				
CT	62	64				
FL	231	249	223	242	8	7
GA	411	411	245	243	166	168
HI	9.7	9.5	9.7	9.5	0	0
IL	80	96	77	92	3	4
IN	489	510	477	498	12	12
IA	871	992				
ME	98	68				
MD	66	71	64	69	2	2
MI	155	164				
MN	237	234	229	226	8	8
MS	129	133	41	38	88	95
MO	156	160				
NE	262	259	262	259	0	0
NY	87	96				
NC	201	207	80	80	121	127
OH	617	607				
OK	74	79	43	44	31	35
OR	67	69	65	67	2	2
PA	541	536	527	521	14	15
SC	116	112	97	93	19	19
SD	75	76	75	76	0	0
TX	382	395				
VA	56	61	26	27	30	34
WA	107	108				
WI	94	104				
30 Sts	6,641	6,847	5,706	5,884	935	963
Oth Sts ²	471	477	389	385	82	93
US	7,112	7,324	6,095	6,269	1,017	1,056

¹ Data by type of flock not shown for some States to avoid disclosing individual operations.

² Estimates for individual States are not available.

**Egg Production: By Type, State, and United States,
October 2003-04**

State	Total Production		Table Eggs ¹		Hatching Eggs ¹	
	2003	2004	2003	2004	2003	2004
	<i>Million Eggs</i>	<i>Million Eggs</i>	<i>Million Eggs</i>	<i>Million Eggs</i>	<i>Million Eggs</i>	<i>Million Eggs</i>
AL	183	179	48	44	135	135
AR	285	278	97	101	188	177
CA	456	471				
CO	91	92				
CT	65	69				
FL	246	261	237	254	9	7
GA	432	435	259	263	173	172
HI	9.9	9.9	9.9	9.9	0	0
IL	86	100	83	96	3	4
IN	506	529	493	516	13	13
IA	950	1,044				
ME	101	62				
MD	71	71	69	69	2	2
MI	162	171				
MN	240	244	232	236	8	8
MS	134	137	44	39	90	98
MO	160	170				
NE	271	269	271	269	0	0
NY	89	100				
NC	211	214	83	83	128	131
OH	629	636				
OK	78	79	45	45	33	34
OR	71	71	69	69	2	2
PA	562	556	548	541	14	15
SC	120	115	101	95	19	20
SD	76	80	76	80	0	0
TX	396	411				
VA	59	68	27	33	32	35
WA	110	123				
WI	98	109				
30 Sts	6,948	7,154	5,973	6,167	975	986
Oth Sts ²	491	489	408	392	83	98
US	7,439	7,643	6,381	6,559	1,058	1,084

¹ Data by type of flock not shown for some States to avoid disclosing individual operations.

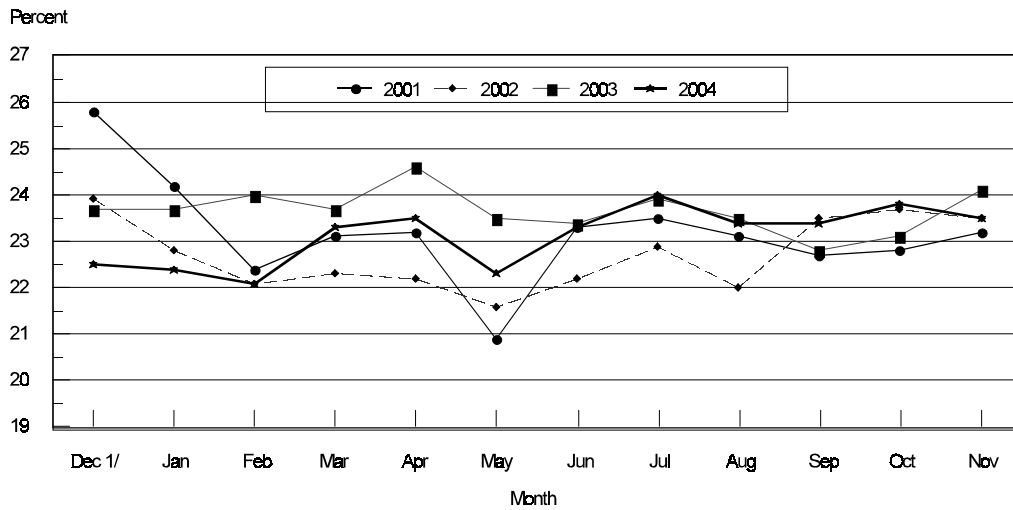
² Estimates for individual States are not available.

**Forced Molt: Percent of All Layers by Month,
United States, 2003-04¹**

Month	Percent Being Molted		Percent with Molt Completed	
	2003	2004	2003	2004
	<i>Percent</i>	<i>Percent</i>	<i>Percent</i>	<i>Percent</i>
Jan	4.4	3.9	23.7	22.4
Feb	4.5	4.9	24.0	22.8
Mar	3.3	4.6	23.7	23.3
Apr	2.2	2.6	24.6	23.5
May	4.3	4.7	23.5	22.3
Jun	4.2	4.8	23.4	23.3
Jul	4.3	4.6	23.9	24.0
Aug	4.1	4.5	23.5	23.4
Sep	3.9	4.5	22.8	23.4
Oct	5.2	3.8	23.1	23.8
Nov	3.4	4.3	24.1	23.5
Dec	2.5		22.7	

¹ As of first of month.

**All Layers: United States
Percent Molt Completed, 2001 - 2004
First of Month**



1/ Previous year

**Forced Molt: Percent of All Layers by State
and United States, November 2003-04 ¹**

State	Percent Being Molted		Percent with Molt Completed	
	2003	2004	2003	2004
	<i>Percent</i>	<i>Percent</i>	<i>Percent</i>	<i>Percent</i>
AL	1.0	0.5	7.0	5.5
AR	1.5	0.5	12.0	11.0
CA	1.5	5.0	37.5	34.0
CO	0.0	1.5	25.0	23.5
CT	0.0	0.0	14.0	10.5
FL	3.5	3.5	30.0	21.0
GA	1.0	6.5	18.5	17.0
HI	4.5	8.5	48.5	47.0
IL	4.5	4.5	34.5	30.5
IN	2.0	3.0	37.0	31.0
IA	9.0	5.0	28.0	37.5
ME	0.0	0.0	0.0	0.0
MD	9.0	15.5	26.0	12.0
MI	5.5	1.0	31.0	34.0
MN	3.5	6.0	24.5	14.0
MS	1.0	2.0	12.0	10.5
MO	2.5	1.5	14.0	24.0
NE	7.0	9.6	21.5	15.4
NY	0.5	1.5	3.5	4.5
NC	1.0	1.0	11.0	8.0
OH	5.0	7.0	21.0	28.0
OK	0.0	0.5	8.5	5.0
OR	2.0	4.0	40.0	31.5
PA	4.0	0.0	22.5	13.5
SC	0.0	5.0	19.5	29.0
SD	6.0	3.0	21.0	45.5
TX	1.5	7.0	26.0	20.5
VA	0.0	0.0	18.5	14.0
WA	5.0	10.0	48.5	42.5
WI	0.0	5.0	32.5	32.0
30 Sts	3.5	4.2	23.8	23.4
Oth Sts ²	2.6	5.1	28.4	24.6
US	3.4	4.3	24.1	23.5

¹ As of first of month.

² Estimates for individual States are not available.

**Hatchery Production: Eggs in Incubators, Chicks Hatched,
and Placements by Type, United States, October-November 2003-04**

Item	2003	2004	2004 as % of 2003
	<i>1,000</i>	<i>1,000</i>	<i>Percent</i>
Egg-Type			
Eggs in Incubators on Nov 1	29,088	37,001	127
Chicks Hatched During Oct	34,812	35,971	103
Chicks Hatched Jan thru Oct	352,183	362,041	103
Pullets Hatched During Oct for Intended Placements in Hatchery Supply Flocks 7-18 Month Earlier ¹	310 2,969	268 3,294	86 111
Broiler-Type			
Eggs in Incubators on Nov 1	587,923	607,594	103
Chicks Hatched During Oct	734,961	757,530	103
Chicks Hatched Jan thru Oct	7,592,024	7,807,118	103
Pullets Hatched During Oct for Intended Placements in Hatchery Supply Flocks 7-15 Months Earlier ²	6,312 60,371	6,587 62,328	104 103

¹ 2004 includes pullet chicks hatched Apr 2003 through Mar 2004.

² 2004 includes pullet chicks hatched Jul 2003 through Mar 2004.

**Egg-Type Eggs in Incubators: By Region and United States,
November 1, 2003-04**

Geographic Division	2003	2004	2004 as % of 2003
	<i>1,000</i>	<i>1,000</i>	<i>Percent</i>
North Atlantic	5,002	6,594	132
E North Central	5,715	7,728	135
W North Central	7,123	8,097	114
South Atlantic	2,040	3,757	184
South Central	4,827	5,904	122
West	4,381	4,921	112
US	29,088	37,001	127

Regional Listing:

North Atlantic = CT, ME, MA, NH, NJ, NY, PA, RI, VT.

E North Central = IL, IN, MI, OH, WI.

W North Central = IA, KS, MN, MO, NE, ND, SD.

South Atlantic = DE, FL, GA, MD, NC, SC, VA, WV.

South Central = AL, AR, KY, LA, MS, OK, TN, TX.

West = AK, AZ, CA, CO, HI, ID, MT, NM, NV, OR, UT, WA, WY.

**Egg-Type Chicks Hatched: By State and United States,
October 2003-04**

State	October			Jan-Oct		
	2003	2004	2004 as % of 2003	2003	2004	2004 as % of 2003
	<i>1,000</i>	<i>1,000</i>	<i>Percent</i>	<i>1,000</i>	<i>1,000</i>	<i>Percent</i>
AR	777	835	107	8,304	8,328	100
FL	685	520	76	6,681	6,067	91
GA	2,360	2,397	102	23,980	23,780	99
IN	4,756	4,762	100	48,987	49,390	101
IA	6,030	6,075	101	59,617	60,782	102
MN	1,112	820	74	12,499	8,869	71
PA	5,111	5,183	101	44,927	51,074	114
Oth Sts ¹	13,981	15,379	110	147,188	153,751	104
US	34,812	35,971	103	352,183	362,041	103

¹ Not published separately to avoid disclosing data for individual operations.

Egg-Type Chicks Hatched: By Month, United States, 2002-04

Month	By Months				Cumulative			
	2002	2003	2004	2004 as % of 2003	2002	2003	2004	2004 as % of 2003
	<i>1,000</i>	<i>1,000</i>	<i>1,000</i>	<i>Percent</i>	<i>1,000</i>	<i>1,000</i>	<i>1,000</i>	<i>Percent</i>
Jan	35,655	33,521	35,350	105	35,655	33,521	35,350	105
Feb	34,473	30,510	32,078	105	70,128	64,031	67,428	105
Mar	36,985	36,775	37,530	102	107,113	100,806	104,958	104
Apr	38,096	37,804	37,514	99	145,209	138,610	142,472	103
May	38,760	37,631	38,631	103	183,969	176,241	181,103	103
Jun	35,144	36,602	38,066	104	219,113	212,843	219,169	103
Jul	35,581	35,566	34,127	96	254,694	248,409	253,296	102
Aug	35,689	33,199	36,024	109	290,383	281,608	289,320	103
Sep	35,742	35,763	36,750	103	326,125	317,371	326,070	103
Oct	32,157	34,812	35,971	103	358,282	352,183	362,041	103
Nov	31,154	30,241			389,436	382,424		
Dec	32,113	33,645			421,549	416,069		

**Intended Placements: Egg-Type Pullet Chicks for Hatchery Supply
Flocks by Month and Total, United States, 2002-04¹**

Month	Pullet Chicks Hatched			2004 as % of 2003	Cumulative Potential Placements Relative to Current Supply Flocks 7-18 Months Earlier ²		
	2002	2003	2004		2003	2004	2005
	<i>1,000</i>	<i>1,000</i>	<i>1,000</i>	<i>Percent</i>	<i>1,000</i>	<i>1,000</i>	<i>1,000</i>
Jan	228	210	164	78	2,974	3,012	3,194
Feb	247	225	285	127	2,916	2,960	3,207
Mar	237	319	401	126	2,886	2,927	3,332
Apr	295	280	311	111	2,944	2,923	3,264
May	319	289	255	88	2,980	3,047	3,222
Jun	221	309	212	69	2,946	3,139	
Jul	282	230	243	106	2,927	3,198	
Aug	221	188	313	166	2,909	3,152	
Sep	277	273	205	75	2,887	3,212	
Oct	186	310	268	86	2,969	3,294	
Nov	227	319			2,954	3,325	
Dec	187	246			2,924	3,291	
Total	2,927	3,198					

¹ Reported by leading breeders. Coverage may not be 100 percent. Includes expected pullet chicks from eggs sold during the preceding month at the rate of 125 pullet chicks per 30 dozen case of eggs.

² For October 2004, includes breeder pullet chicks hatched Apr 2003 through Mar 2004. The 7-18 months represent the first laying cycle. Molting and additional laying cycles will increase the cumulative potential placements.

**Broiler-Type Eggs in Incubators: By Region
and United States, November 1, 2003-04**

Geographic Division	2003	2004	2004 as % of 2003
	<i>1,000</i>	<i>1,000</i>	<i>Percent</i>
North Atlantic	11,028	12,296	111
E North Central	8,212	8,582	105
W North Central	19,507	20,022	103
South Atlantic	215,623	222,397	103
South Central	310,782	320,431	103
West	22,771	23,866	105
US	587,923	607,594	103

**Broiler-Type Chicks Hatched: By State
and United States, October 2003-04**

State	October			Jan-Oct		
	2003	2004	2004 as % of 2003	2003	2004	2004 as % of 2003
	<i>1,000</i>	<i>1,000</i>	<i>Percent</i>	<i>1,000</i>	<i>1,000</i>	<i>Percent</i>
AL	101,931	106,237	104	1,030,087	1,095,206	106
AR	108,555	108,403	100	1,094,623	1,125,194	103
DE	12,770	13,140	103	130,619	135,282	104
FL	4,977	4,933	99	52,538	48,767	93
GA	113,151	116,221	103	1,142,731	1,190,327	104
KY	23,397	23,912	102	239,950	252,676	105
LA	13,992	13,919	99	136,761	137,878	101
MD	30,669	30,087	98	337,579	312,817	93
MS	65,873	69,188	105	692,807	714,273	103
NC	60,023	63,039	105	646,770	654,774	101
OK	21,899	22,000	100	226,747	233,864	103
PA	12,277	12,877	105	125,753	130,788	104
SC	15,645	15,450	99	164,181	136,783	83
TX	51,365	53,247	104	530,162	544,829	103
VA	22,395	22,900	102	234,766	236,955	101
CA, MO, TN, & WV	56,823	63,078	111	590,684	634,220	107
19 Sts ¹	715,742	738,631	103	7,376,758	7,584,633	103
Oth Sts ²	19,219	18,899	98	215,266	222,485	103
US	734,961	757,530	103	7,592,024	7,807,118	103

¹ States in the weekly hatchery production estimating program.

² Not published separately to avoid disclosing data for individual operations.

Broiler-Type Chicks Hatched: By Month, United States, 2002-04

Month	By Months				Cumulative			
	2002	2003	2004	2004 as % of 2003	2002	2003	2004	2004 as % of 2003
	<i>1,000</i>	<i>1,000</i>	<i>1,000</i>	<i>Percent</i>	<i>1,000</i>	<i>1,000</i>	<i>1,000</i>	<i>Percent</i>
Jan	776,961	759,674	773,970	102	776,961	759,674	773,970	102
Feb	703,323	693,549	727,936	105	1,480,284	1,453,223	1,501,906	103
Mar	791,093	774,354	791,149	102	2,271,377	2,227,577	2,293,055	103
Apr	765,457	760,638	774,452	102	3,036,834	2,988,215	3,067,507	103
May	799,288	792,813	809,725	102	3,836,122	3,781,028	3,877,232	103
Jun	776,343	774,679	785,844	101	4,612,465	4,555,707	4,663,076	102
Jul	781,701	777,838	806,827	104	5,394,166	5,333,545	5,469,903	103
Aug	780,030	784,037	809,820	103	6,174,196	6,117,582	6,279,723	103
Sep	740,388	739,481	769,865	104	6,914,584	6,857,063	7,049,588	103
Oct	720,564	734,961	757,530	103	7,635,148	7,592,024	7,807,118	103
Nov	690,061	707,627			8,325,209	8,299,651		
Dec	753,883	780,094			9,079,092	9,079,745		

**Intended Placements: Broiler-Type Pullet Chicks for Hatchery
Supply Flocks by Month and Total, 2002-04 ¹**

Month	Pullet Chicks Hatched			2004 as % of 2003	Cumulative Potential Placements Relative to Current Supply Flocks 7-15 Months Earlier ²		
	2002	2003	2004		2003	2004	2005
	<i>1,000</i>	<i>1,000</i>	<i>1,000</i>	<i>Percent</i>	<i>1,000</i>	<i>1,000</i>	<i>1,000</i>
US Place- ments							
Jan	6,264	6,269	6,811	109	62,473	60,450	61,823
Feb	7,275	6,659	7,340	110	62,371	61,256	62,345
Mar	6,775	7,038	6,815	97	62,559	61,719	62,679
Apr	6,814	6,735	6,402	95	62,658	61,898	63,459
May	7,597	7,323	7,492	102	62,659	61,941	63,235
Jun	7,206	6,748	6,727	100	62,322	62,228	
Jul	6,602	7,071	6,834	97	62,022	62,168	
Aug	7,449	7,401	7,280	98	61,477	62,244	
Sep	6,676	6,654	7,758	117	60,539	62,261	
Oct	6,265	6,312	6,587	104	60,371	62,328	
Nov	6,938	6,946			60,504	61,659	
Dec	6,475	6,978			60,378	61,750	
Annual Total	82,336	82,134					
Total Place- ments ³							
Jan	7,415	7,388	7,812	106			
Feb	8,491	8,094	8,251	102			
Mar	7,997	8,549	7,801	91			
Apr	8,119	8,062	7,288	90			
May	8,982	8,604	8,596	100			
Jun	8,802	8,341	8,100	97			
Jul	8,083	8,555	8,149	95			
Aug	8,913	8,756	8,416	96			
Sep	8,002	8,338	9,184	110			
Oct	7,438	7,695	7,766	101			
Nov	8,202	8,246					
Dec	8,016	8,185					
Annual Total	98,460	98,813					

¹ Reported by leading breeders. Coverage may not be 100 percent. Includes expected pullet chicks from eggs sold during the preceding month at the rate of 125 pullet chicks per 30 dozen case of eggs.

² For Oct 2004, includes breeder pullet chicks hatched Jul 2003 through Mar 2004.

³ U.S. production of intended placements worldwide.

Procedures and Reliability

Data Sources: Primary data for the "**Chickens and Eggs**" report are from weekly and/or monthly questionnaires sent to producers. An attempt is made to collect information for layer and egg estimates from each known contractor and independent producer who has over 30,000 table egg layers. Coverage for operations with less than 30,000 table egg layers are estimated each month based on data reported in December. Approximately 900 contractors, independent egg producers, and started pullet operations are contacted each month. All known hatcheries, approximately 330, are contacted for information on a weekly and/or monthly basis.

Revisions: The previous month's estimates are subject to revision if late reports or corrected data indicates a different level. Additionally, revisions needed after the monthly report will be made at the end of the marketing year and published in the annual summaries of "**Chickens and Eggs Summary**" and "**Hatchery Production**".

Procedures and Reliability: Operations are mailed a questionnaire and given adequate time to respond by mail. Those that do not respond are phoned. Great care is exercised to ensure that all operations are accounted for during each survey period. However, there are usually missing reports that must be accounted for in the estimates.

Sound statistical methodology is employed to derive estimates from the reported data. All data are checked for unusual values. All operations' data are compared to their own past operating profiles and also to trends from other operations. Data for missing operations are estimated based on similar operations or historical data. Survey data are subject to non-sampling errors such as omissions and mistakes in reporting and in processing. While these errors cannot be measured directly, they are minimized by reviewing all data for consistency and reasonableness.

Egg-type chicks hatched are comprised of all chicks of egg-type domesticated breeds including males and chicks destined for hatchery supply flocks and research purposes. The relationship of chicks hatched to chicken inventory and poultry marketings is carefully monitored. The disposition of egg-type chicks hatched prior to placement into the laying flock can vary significantly, which can make comparisons to changes in layer inventory inconsistent over time.

Intended placement data reported by leading breeders include pullet chicks expected from eggs sold the preceding month. The breeders in this report account for a large percentage of replacement pullets for hatchery supply flocks. Production of replacement pullets by these breeders indicates the number of pullets available to hatchery supply flocks several months before the pullets will actually move into the flocks. "Hatchery Supply Flocks" include all generations of layers which could lay eggs to supply a hatchery. This includes the generations of parents, grandparents, great-grandparents, pedigree, etc. Also included are research flocks, vaccine flocks, and specific pathogen-free flocks. The broiler cumulative potential placements are a moving total of the intended placements 7-15 months earlier. The egg-type cumulative potential placements of 7-18 months represent the first laying cycle. Molting and additional laying cycles will increase the cumulative potential placements of egg-type hatching flocks.

ACCESS TO REPORTS!!

For your convenience, there are several ways to obtain NASS reports, data products, and services:

INTERNET ACCESS

All NASS reports are available free of charge on the worldwide Internet. For access, connect to the Internet and go to the NASS Home Page at: www.usda.gov/nass/. Select "Today's Reports" or Publications and then Reports Calendar or Publications and then Search, by Title or Subject.

E-MAIL SUBSCRIPTION

All NASS reports are available by subscription free of charge direct to your e-mail address. Starting with the NASS Home Page at www.usda.gov/nass/, click on **Publications**, then click on the **Subscribe by E-mail** button which takes you to the page describing e-mail delivery of reports. Finally, click on **Go to the Subscription Page** and follow the instructions.

PRINTED REPORTS OR DATA PRODUCTS

CALL OUR TOLL-FREE ORDER DESK: 800-999-6779 (U.S. and Canada)
Other areas, please call 703-605-6220 FAX: 703-605-6900
(Visa, MasterCard, check, or money order acceptable for payment.)

ASSISTANCE

For **assistance** with general agricultural statistics or further information about NASS or its products or services, contact the **Agricultural Statistics Hotline** at **800-727-9540**, 7:30 a.m. to 4:00 p.m. ET, or e-mail: nass@nass.usda.gov.

The United States Department of Agriculture (USDA) prohibits discrimination in all its programs on the basis of race, color, national origin, gender, religion, age, disability, political beliefs, sexual orientation, and marital or family status. (Not all prohibited bases apply to all programs.) Persons with disabilities who require alternative means for communication of program information (braille, large print, audiotape, etc.) should contact the USDA's TARGET Center at 202-720-2600 (voice and TDD).

To file a complaint of discrimination, write USDA, Director, Office of Civil Rights, Room 326-W, Whitten Building, 1400 Independence Avenue, SW, Washington, D.C., 20250-9410, or call 202-720-5964 (voice or TDD). USDA is an equal opportunity provider and employer.