

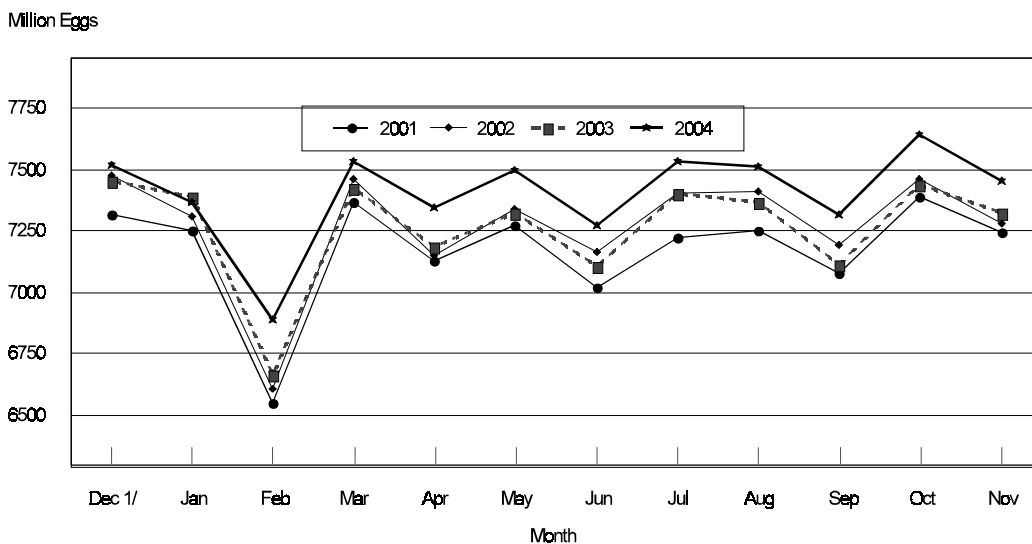
Released December 21, 2004, by the National Agricultural Statistics Service (NASS), Agricultural Statistics Board, U.S. Department of Agriculture. For information on *Chickens and Eggs* call Sharyn Lavender at (202) 720-3244, for "Hatch" call Jody Roberts at (202) 690-8632, office hours 7:30 a.m. to 4:00 p.m. ET.

November Egg Production Up 2 Percent

U.S. egg production totaled 7.46 billion during November 2004, up 2 percent from last year. Production included 6.42 billion table eggs, and 1.04 billion hatching eggs, of which 980 million were broiler-type and 59 million were egg-type. The total number of layers during November 2004 averaged 343 million, up 2 percent from a year earlier. November egg production per 100 layers was 2,170 eggs, up slightly from November 2003.

November 2004 contained 22 weekdays, 4 Saturdays and 2 holidays compared to November 2003 contained 20 weekdays, 5 Saturdays and 2 holidays.

All Egg Production By Months United States, 2001 - 2004



1/ Previous Year

All layers in the U.S. on December 1, 2004, totaled 343 million, up 1 percent from a year ago. The 343 million layers consisted of 285 million layers producing table or market type eggs, 54.9 million layers producing broiler-type hatching eggs, and 2.51 million layers producing egg-type hatching eggs. Rate of lay per day on December 1, 2004, averaged 72.8 eggs per 100 layers, up 1 percent from a year ago.

Laying flocks in the 30 major egg producing States produced 6.98 billion eggs during November 2004, up 2 percent from a year ago. The average number of layers during November, at 321 million, was up 2 percent from a year ago.

Individual State estimates are available for the 30 major egg producing States. These States are listed on page 8 of this release and account for approximately 94 percent of the total U.S. egg production. Production for the other States are grouped into an "Other States" category and combined with the 30 States published individually to obtain a U.S. estimate.

Egg-Type Chicks Hatched Up 27 Percent

Egg-type chicks hatched during November totaled 38.4 million, up 27 percent from November 2003. Eggs in incubators totaled 35.9 million on December 1, 2004, up 10 percent from a year ago.

Domestic placements of egg-type pullet chicks for future hatchery supply flocks by leading breeders totaled 225,000 during November 2004, down 29 percent from November 2003.

Broiler Hatch Up 3 Percent

The November 2004 hatch of broiler-type chicks, at 731 million, was up 3 percent from November of the previous year. There were 645 million eggs in incubators on December 1, 2004, up 1 percent from a year earlier.

Leading breeders placed 7.01 million broiler-type pullet chicks for future domestic hatchery supply flocks during November 2004, up 1 percent from November 2003.

**All Layers: Average Number on Hand During the Month,
United States, 2001-04**

| Month | 2001 | 2002 | 2003 | 2004 |
|------------------|---------------------|---------------------|---------------------|---------------------|
| | <i>1,000 Layers</i> | <i>1,000 Layers</i> | <i>1,000 Layers</i> | <i>1,000 Layers</i> |
| Dec ¹ | 333,488 | 341,243 | 340,316 | 338,243 |
| Jan | 334,982 | 340,885 | 340,910 | 337,749 |
| Feb | 337,008 | 339,529 | 340,575 | 338,942 |
| Mar | 338,078 | 339,434 | 339,885 | 341,000 |
| Apr | 338,414 | 338,809 | 338,182 | 341,912 |
| May | 336,454 | 337,566 | 336,164 | 342,085 |
| Jun | 334,237 | 337,339 | 334,789 | 342,140 |
| Jul | 333,571 | 337,849 | 334,179 | 341,660 |
| Aug | 334,156 | 338,397 | 334,332 | 342,034 |
| Sep | 336,651 | 339,511 | 334,198 | 343,169 |
| Oct | 338,996 | 340,461 | 335,333 | 344,072 |
| Nov | 339,919 | 340,490 | 338,283 | 343,477 |

¹ December preceding year.

**Eggs: Production During the Month by Type,
United States, 2003-04**

| Month | Total Eggs | | Table Eggs | | Hatching Eggs | |
|------------------|---------------------|---------------------|---------------------|---------------------|---------------------|---------------------|
| | 2003 | 2004 | 2003 | 2004 | 2003 | 2004 |
| | <i>Million Eggs</i> | <i>Million Eggs</i> | <i>Million Eggs</i> | <i>Million Eggs</i> | <i>Million Eggs</i> | <i>Million Eggs</i> |
| Dec ¹ | 7,451 | 7,520 | 6,392 | 6,466 | 1,058 | 1,055 |
| Jan | 7,390 | 7,371 | 6,301 | 6,315 | 1,088 | 1,056 |
| Feb | 6,665 | 6,890 | 5,673 | 5,890 | 991 | 1,001 |
| Mar | 7,424 | 7,532 | 6,316 | 6,446 | 1,108 | 1,087 |
| Apr | 7,187 | 7,343 | 6,103 | 6,276 | 1,084 | 1,067 |
| May | 7,327 | 7,499 | 6,200 | 6,386 | 1,127 | 1,113 |
| Jun | 7,105 | 7,274 | 6,028 | 6,201 | 1,077 | 1,072 |
| Jul | 7,403 | 7,536 | 6,316 | 6,441 | 1,086 | 1,095 |
| Aug | 7,367 | 7,515 | 6,296 | 6,427 | 1,070 | 1,088 |
| Sep | 7,112 | 7,324 | 6,095 | 6,269 | 1,017 | 1,056 |
| Oct | 7,439 | 7,639 | 6,381 | 6,556 | 1,058 | 1,083 |
| Nov | 7,326 | 7,455 | 6,301 | 6,416 | 1,025 | 1,039 |
| During Year | 87,196 | 88,898 | 74,402 | 76,089 | 12,789 | 12,812 |

¹ December preceding year.

**Layers and Eggs: Layers on Hand and Eggs Produced by Type,
and Forced Molt, United States, October-November 2003-04**

| Item | Unit | 2003 | 2004 | 2004 as % of 2003 |
|--|---------|---------|---------|-------------------------|
| Layers During Oct | 1,000 | | | |
| All Layers | | 335,333 | 344,072 | 103 |
| Table Egg Type | | 278,138 | 285,861 | 103 |
| Hatching Egg Type | | 57,195 | 58,211 | 102 |
| Broiler-Type Hatching | | 54,763 | 55,654 | 102 |
| Egg-Type Hatching | | 2,432 | 2,557 | 105 |
| Eggs per 100 Layers During Oct | Number | | | |
| All Layers | | 2,218 | 2,220 | 100 |
| Table Egg Type | | 2,294 | 2,293 | 100 |
| Hatching Egg Type | | 1,850 | 1,860 | 101 |
| Broiler-Type Hatching | | 1,828 | 1,835 | 100 |
| Egg-Type Hatching | | 2,344 | 2,425 | 103 |
| Eggs Produced During Oct | Million | | | |
| All Layers | | 7,439 | 7,639 | 103 |
| Table Egg Type | | 6,381 | 6,556 | 103 |
| Hatching Egg Type | | 1,058 | 1,083 | 102 |
| Broiler-Type Hatching | | 1,001 | 1,021 | 102 |
| Egg-Type Hatching | | 57 | 62 | 109 |
| Layers on Nov 1 | 1,000 | | | |
| All Layers | | 336,528 | 344,247 | 102 |
| Table Egg Type | | 279,338 | 286,313 | 102 |
| Hatching Egg Type | | 57,190 | 57,934 | 101 |
| Broiler-Type Hatching | | 54,692 | 55,435 | 101 |
| Egg-Type Hatching | | 2,498 | 2,499 | 100 |
| Eggs per 100 Layers on Nov 1 | Number | | | |
| All Layers | | 71.9 | 71.7 | 100 |
| Table Egg Type | | 74.3 | 74.2 | 100 |
| Hatching Egg Type | | 60.1 | 59.6 | 99 |
| Broiler-Type Hatching | | 59.5 | 58.7 | 99 |
| Egg-Type Hatching | | 74.8 | 79.8 | 107 |
| Forced Molt Layers on Nov 1 | Percent | | | |
| Percent Being Molted | | 3.4 | 4.2 | 124 |
| Percent with Molt Completed | | 24.1 | 23.9 | 99 |
| Layers Sold for Slaughter During Oct | 1,000 | 13,485 | 14,865 | 110 |
| Layers Rendered, Died, Destroyed, Composted or Disappeared For Any Reason During Oct | 1,000 | 6,278 | 6,242 | 99 |
| Pullets Less Than 20 Weeks of Age, Nov 1 | 1,000 | 102,207 | 99,187 | 97 |
| Pullets Added During Oct ¹ | 1,000 | 25,018 | 24,714 | 99 |

¹ Pullet chicks one day old added to pullet flocks.

**Layers and Eggs: Layers on Hand and Eggs Produced by Type,
and Forced Molt, United States, November-December 2003-04**

| Item | Unit | 2003 | 2004 | 2004 as % of 2003 |
|--|---------|---------|---------|-------------------------|
| Layers During Nov | 1,000 | | | |
| All Layers | | 338,283 | 343,477 | 102 |
| Table Egg Type | | 280,904 | 285,779 | 102 |
| Hatching Egg Type | | 57,379 | 57,698 | 101 |
| Broiler-Type Hatching | | 54,861 | 55,188 | 101 |
| Egg-Type Hatching | | 2,518 | 2,510 | 100 |
| Eggs per 100 Layers During Nov | Number | | | |
| All Layers | | 2,166 | 2,170 | 100 |
| Table Egg Type | | 2,243 | 2,245 | 100 |
| Hatching Egg Type | | 1,786 | 1,801 | 101 |
| Broiler-Type Hatching | | 1,764 | 1,776 | 101 |
| Egg-Type Hatching | | 2,264 | 2,351 | 104 |
| Eggs Produced During Nov | Million | | | |
| All Layers | | 7,326 | 7,455 | 102 |
| Table Egg Type | | 6,301 | 6,416 | 102 |
| Hatching Egg Type | | 1,025 | 1,039 | 101 |
| Broiler-Type Hatching | | 968 | 980 | 101 |
| Egg-Type Hatching | | 57 | 59 | 104 |
| Layers on Dec 1 | 1,000 | | | |
| All Layers | | 339,989 | 342,665 | 101 |
| Table Egg Type | | 282,443 | 285,226 | 101 |
| Hatching Egg Type | | 57,546 | 57,439 | 100 |
| Broiler-Type Hatching | | 55,016 | 54,925 | 100 |
| Egg-Type Hatching | | 2,530 | 2,514 | 99 |
| Eggs per 100 Layers on Dec 1 | Number | | | |
| All Layers | | 72.4 | 72.8 | 101 |
| Table Egg Type | | 75.2 | 75.4 | 100 |
| Hatching Egg Type | | 58.9 | 60.1 | 102 |
| Broiler-Type Hatching | | 58.1 | 59.3 | 102 |
| Egg-Type Hatching | | 75.8 | 78.0 | 103 |
| Forced Molt Layers, Dec 1 | Percent | | | |
| Percent Being Molted | | 2.5 | 2.6 | 104 |
| Percent with Molt Completed | | 22.7 | 23.8 | 105 |
| Layers Sold for Slaughter During Nov | 1,000 | 14,043 | 13,970 | 99 |
| Layers Rendered, Died, Destroyed, Composted or Disappeared For Any Reason During Nov | 1,000 | 5,792 | 6,223 | 107 |
| Pullets Less Than 20 Weeks of Age, Dec 1 | 1,000 | 100,321 | 100,336 | 100 |
| Pullets Added During Nov ¹ | 1,000 | 23,157 | 23,242 | 100 |

¹ Pullet chicks one day old added to pullet flocks.

Layers and Eggs: Layers on Hand and Eggs Produced by Type, and Forced Molt, 30 Selected States, October-November, 2003-04 ¹

| Item | Unit | 2003 | 2004 | 2004 as % of 2003 |
|--|---------|---------|---------|-------------------------|
| Layers During Oct | 1,000 | | | |
| All Layers | | 313,041 | 321,804 | 103 |
| Table Egg Type | | 260,424 | 268,571 | 103 |
| Hatching Egg Type | | 52,617 | 53,233 | 101 |
| Broiler-Type Hatching | | 50,268 | 50,802 | 101 |
| Egg-Type Hatching | | 2,349 | 2,431 | 103 |
| Eggs per 100 Layers During Oct | Number | | | |
| All Layers | | 2,220 | 2,222 | 100 |
| Table Egg Type | | 2,294 | 2,295 | 100 |
| Hatching Egg Type | | 1,853 | 1,852 | 100 |
| Broiler-Type Hatching | | 1,830 | 1,825 | 100 |
| Egg-Type Hatching | | 2,341 | 2,427 | 104 |
| Eggs Produced During Oct | Million | | | |
| All Layers | | 6,948 | 7,151 | 103 |
| Table Egg Type | | 5,973 | 6,164 | 103 |
| Hatching Egg Type | | 975 | 986 | 101 |
| Broiler-Type Hatching | | 920 | 927 | 101 |
| Egg-Type Hatching | | 55 | 59 | 107 |
| Layers on Nov 1 | 1,000 | | | |
| All Layers | | 314,132 | 322,090 | 103 |
| Table Egg Type | | 261,552 | 269,121 | 103 |
| Hatching Egg Type | | 52,580 | 52,969 | 101 |
| Broiler-Type Hatching | | 50,173 | 50,591 | 101 |
| Egg-Type Hatching | | 2,407 | 2,378 | 99 |
| Eggs per 100 Layers on Nov 1 | Number | | | |
| All Layers | | 71.9 | 71.9 | 100 |
| Table Egg Type | | 74.2 | 74.3 | 100 |
| Hatching Egg Type | | 60.2 | 59.4 | 99 |
| Broiler-Type Hatching | | 59.5 | 58.5 | 98 |
| Egg-Type Hatching | | 74.8 | 79.6 | 106 |
| Forced Molt Layers on Nov 1 | Percent | | | |
| Percent Being Molted | | 3.5 | 4.2 | 120 |
| Percent with Molt Completed | | 23.8 | 23.8 | 100 |
| Layers Sold for Slaughter During Oct | 1,000 | 12,650 | 13,788 | 109 |
| Layers Rendered, Died, Destroyed, Composted or Disappeared For Any Reason During Oct | 1,000 | 5,815 | 5,763 | 99 |
| Pullets Less Than 20 Weeks of Age, Nov 1 | 1,000 | 95,012 | 91,553 | 96 |
| Pullets Added During Oct ² | 1,000 | 23,709 | 22,905 | 97 |

¹ The 30 States are listed in the table on page 8.

² Pullet chicks one day old added to pullet flocks.

Layers and Eggs: Layers on Hand and Eggs Produced by Type, and Forced Molt, 30 Selected States, November-December, 2003-04 ¹

| Item | Unit | 2003 ² | 2004 | 2004 as % of 2003 |
|--|---------|-------------------|---------|-------------------------|
| Layers During Nov | 1,000 | | | |
| All Layers | | 315,729 | 321,230 | 102 |
| Table Egg Type | | 262,978 | 268,523 | 102 |
| Hatching Egg Type | | 52,751 | 52,707 | 100 |
| Broiler-Type Hatching | | 50,333 | 50,321 | 100 |
| Egg-Type Hatching | | 2,418 | 2,386 | 99 |
| Eggs per 100 Layers During Nov | 1,000 | | | |
| All Layers | | 2,165 | 2,172 | 100 |
| Table Egg Type | | 2,241 | 2,246 | 100 |
| Hatching Egg Type | | 1,786 | 1,797 | 101 |
| Broiler-Type Hatching | | 1,762 | 1,771 | 101 |
| Egg-Type Hatching | | 2,275 | 2,347 | 103 |
| Eggs Produced During Nov | Million | | | |
| All Layers | | 6,835 | 6,978 | 102 |
| Table Egg Type | | 5,893 | 6,030 | 102 |
| Hatching Egg Type | | 942 | 947 | 101 |
| Broiler-Type Hatching | | 887 | 891 | 100 |
| Egg-Type Hatching | | 55 | 56 | 102 |
| Layers on Dec 1 | 1,000 | | | |
| All Layers | | 317,290 | 320,340 | 101 |
| Table Egg Type | | 264,386 | 267,914 | 101 |
| Hatching Egg Type | | 52,904 | 52,426 | 99 |
| Broiler-Type Hatching | | 50,481 | 50,038 | 99 |
| Egg-Type Hatching | | 2,423 | 2,388 | 99 |
| Eggs per 100 Layers on Dec 1 | Number | | | |
| All Layers | | 72.4 | 72.8 | 101 |
| Table Egg Type | | 75.1 | 75.3 | 100 |
| Hatching Egg Type | | 58.9 | 60.1 | 102 |
| Broiler-Type Hatching | | 58.1 | 59.3 | 102 |
| Egg-Type Hatching | | 76.0 | 78.3 | 103 |
| Forced Molt Layers, Dec 1 | Percent | | | |
| Percent Being Molted | | 2.5 | 2.5 | 100 |
| Percent with Molt Completed | | 22.5 | 23.5 | 104 |
| Layers Sold for Slaughter During Nov | 1,000 | 13,092 | 12,849 | 98 |
| Layers Rendered, Died, Destroyed, Composted or Disappeared For Any Reason During Nov | 1,000 | 5,549 | 5,825 | 105 |
| Pullets Less Than 20 Weeks of Age, Dec 1 | 1,000 | 93,174 | 93,186 | 100 |
| Pullets Added During Nov ³ | 1,000 | 21,828 | 21,684 | 99 |

¹ The 30 States are listed in the table on page 8.

² Revised.

³ Pullet chicks one day old added to pullet flocks.

**Layers and Eggs: Layers on Hand and Eggs Produced by State
and United States, During October 2003-04**

| State | Table Egg Layers in Flocks 30,000 and Above | | All Layers ¹ | | Eggs per 100 for All Layers ¹ | |
|----------------------|--|--------------|-------------------------|--------------|---|---------------|
| | 2003 | 2004 | 2003 | 2004 | 2003 | 2004 |
| | <i>1,000</i> | <i>1,000</i> | <i>1,000</i> | <i>1,000</i> | <i>Number</i> | <i>Number</i> |
| AL | 2,084 | 1,885 | 9,436 | 9,233 | 1,939 | 1,939 |
| AR | 4,293 | 4,173 | 14,778 | 14,390 | 1,929 | 1,932 |
| CA | 19,610 | 20,048 | 20,144 | 20,578 | 2,264 | 2,289 |
| CO | 3,347 | 3,473 | 3,790 | 4,015 | 2,401 | 2,291 |
| CT | 2,805 | 2,794 | 2,869 | 2,844 | 2,266 | 2,426 |
| FL | 10,393 | 10,763 | 10,926 | 11,202 | 2,252 | 2,303 |
| GA | 11,138 | 11,227 | 20,200 | 20,323 | 2,139 | 2,140 |
| HI | 464 | 465 | 500 | 505 | 1,980 | 1,960 |
| IL | 3,545 | 3,964 | 3,762 | 4,206 | 2,286 | 2,378 |
| IN | 21,702 | 22,448 | 22,396 | 23,238 | 2,259 | 2,276 |
| IA | 39,322 | 45,434 | 40,094 | 46,197 | 2,369 | 2,260 |
| ME | 4,139 | 2,729 | 4,184 | 2,781 | 2,414 | 2,229 |
| MD | 2,783 | 3,074 | 2,928 | 3,215 | 2,425 | 2,208 |
| MI | 6,618 | 7,363 | 6,869 | 7,614 | 2,358 | 2,246 |
| MN | 10,285 | 10,188 | 10,880 | 10,771 | 2,206 | 2,265 |
| MS | 1,851 | 1,696 | 6,760 | 7,007 | 1,982 | 1,955 |
| MO | 5,297 | 6,031 | 6,713 | 7,303 | 2,383 | 2,328 |
| NE | 11,698 | 11,969 | 11,798 | 12,044 | 2,297 | 2,233 |
| NY | 3,437 | 3,733 | 3,697 | 4,054 | 2,407 | 2,467 |
| NC | 3,416 | 3,355 | 10,576 | 10,826 | 1,995 | 1,977 |
| OH | 28,479 | 27,989 | 28,969 | 28,467 | 2,171 | 2,234 |
| OK | 1,943 | 1,916 | 4,046 | 4,016 | 1,928 | 1,967 |
| OR | 2,835 | 2,785 | 3,027 | 2,974 | 2,346 | 2,387 |
| PA | 22,709 | 22,126 | 24,409 | 23,835 | 2,302 | 2,333 |
| SC | 4,252 | 4,128 | 5,408 | 5,222 | 2,219 | 2,202 |
| SD | 3,154 | 3,199 | 3,354 | 3,399 | 2,266 | 2,354 |
| TX | 14,196 | 14,119 | 18,454 | 18,515 | 2,146 | 2,220 |
| VA | 1,139 | 1,312 | 2,990 | 3,163 | 1,973 | 2,150 |
| WA | 4,802 | 4,956 | 4,872 | 5,017 | 2,258 | 2,452 |
| WI | 3,703 | 4,334 | 4,212 | 4,850 | 2,327 | 2,247 |
| 30 Sts | 255,439 | 263,676 | 313,041 | 321,804 | 2,220 | 2,222 |
| Oth Sts ² | 16,588 | 16,097 | 22,292 | 22,268 | 2,203 | 2,191 |
| US | 272,027 | 279,773 | 335,333 | 344,072 | 2,218 | 2,220 |

¹ Includes all layers and eggs produced in both table egg and hatching egg flocks regardless of size.

² Estimates for individual States are not available.

**Layers and Eggs: Layers on Hand and Eggs Produced by State
and United States, During November 2003-04**

| State | Table Egg Layers in Flocks 30,000 and Above | | All Layers ¹ | | Eggs per 100 for All Layers ¹ | |
|----------------------|--|--------------|-------------------------|--------------|---|---------------|
| | 2003 | 2004 | 2003 | 2004 | 2003 | 2004 |
| | <i>1,000</i> | <i>1,000</i> | <i>1,000</i> | <i>1,000</i> | <i>Number</i> | <i>Number</i> |
| AL | 2,081 | 1,901 | 9,364 | 9,300 | 1,901 | 1,871 |
| AR | 4,341 | 4,168 | 14,637 | 14,196 | 1,886 | 1,874 |
| CA | 20,152 | 20,086 | 20,721 | 20,614 | 2,220 | 2,231 |
| CO | 3,595 | 3,430 | 4,010 | 3,970 | 2,344 | 2,217 |
| CT | 2,833 | 2,890 | 2,892 | 2,938 | 2,317 | 2,280 |
| FL | 10,473 | 10,523 | 11,009 | 10,944 | 2,225 | 2,303 |
| GA | 11,416 | 11,148 | 20,499 | 20,079 | 2,059 | 2,092 |
| HI | 465 | 472 | 499 | 512 | 1,924 | 1,895 |
| IL | 3,592 | 4,108 | 3,804 | 4,345 | 2,234 | 2,301 |
| IN | 22,162 | 22,281 | 22,880 | 23,040 | 2,220 | 2,240 |
| IA | 40,127 | 45,809 | 40,878 | 46,545 | 2,295 | 2,187 |
| ME | 4,109 | 2,679 | 4,158 | 2,732 | 2,261 | 2,086 |
| MD | 2,782 | 3,032 | 2,927 | 3,186 | 2,392 | 2,260 |
| MI | 6,708 | 7,353 | 6,959 | 7,603 | 2,285 | 2,302 |
| MN | 10,493 | 10,468 | 11,074 | 11,046 | 2,131 | 2,173 |
| MS | 1,876 | 1,708 | 6,801 | 6,906 | 1,911 | 1,940 |
| MO | 5,252 | 6,062 | 6,614 | 7,266 | 2,238 | 2,243 |
| NE | 11,702 | 11,962 | 11,790 | 12,037 | 2,214 | 2,202 |
| NY | 3,399 | 3,723 | 3,722 | 4,045 | 2,337 | 2,398 |
| NC | 3,425 | 3,295 | 10,769 | 10,826 | 1,913 | 1,921 |
| OH | 28,749 | 27,694 | 29,238 | 28,149 | 2,151 | 2,210 |
| OK | 1,951 | 1,906 | 4,103 | 4,000 | 1,852 | 1,875 |
| OR | 2,790 | 2,675 | 2,971 | 2,864 | 2,289 | 2,304 |
| PA | 22,191 | 21,910 | 23,946 | 23,630 | 2,238 | 2,306 |
| SC | 4,188 | 4,184 | 5,402 | 5,264 | 2,184 | 2,185 |
| SD | 3,152 | 3,196 | 3,352 | 3,396 | 2,178 | 2,297 |
| TX | 14,175 | 14,221 | 18,409 | 18,599 | 2,129 | 2,156 |
| VA | 1,232 | 1,363 | 3,101 | 3,227 | 1,935 | 2,107 |
| WA | 4,821 | 4,909 | 4,886 | 4,969 | 2,251 | 2,355 |
| WI | 3,796 | 4,472 | 4,314 | 5,002 | 2,295 | 2,179 |
| 30 Sts | 258,028 | 263,628 | 315,729 | 321,230 | 2,165 | 2,172 |
| Oth Sts ² | 16,793 | 16,063 | 22,554 | 22,247 | 2,177 | 2,144 |
| US | 274,821 | 279,691 | 338,283 | 343,477 | 2,166 | 2,170 |

¹ Includes all layers and eggs produced in both table egg and hatching egg flocks regardless of size.

² Estimates for individual States are not available.

**Egg Production: By Type, State, and United States,
October 2003-04**

| State | Total Production | | Table Eggs ¹ | | Hatching Eggs ¹ | |
|----------------------|---------------------|---------------------|-------------------------|---------------------|----------------------------|---------------------|
| | 2003 | 2004 | 2003 | 2004 | 2003 | 2004 |
| | <i>Million Eggs</i> | <i>Million Eggs</i> | <i>Million Eggs</i> | <i>Million Eggs</i> | <i>Million Eggs</i> | <i>Million Eggs</i> |
| AL | 183 | 179 | 48 | 44 | 135 | 135 |
| AR | 285 | 278 | 97 | 101 | 188 | 177 |
| CA | 456 | 471 | | | | |
| CO | 91 | 92 | | | | |
| CT | 65 | 69 | | | | |
| FL | 246 | 258 | 237 | 251 | 9 | 7 |
| GA | 432 | 435 | 259 | 263 | 173 | 172 |
| HI | 9.9 | 9.9 | 9.9 | 9.9 | 0 | 0 |
| IL | 86 | 100 | 83 | 96 | 3 | 4 |
| IN | 506 | 529 | 493 | 516 | 13 | 13 |
| IA | 950 | 1,044 | | | | |
| ME | 101 | 62 | | | | |
| MD | 71 | 71 | 69 | 69 | 2 | 2 |
| MI | 162 | 171 | | | | |
| MN | 240 | 244 | 232 | 236 | 8 | 8 |
| MS | 134 | 137 | 44 | 39 | 90 | 98 |
| MO | 160 | 170 | | | | |
| NE | 271 | 269 | 271 | 269 | 0 | 0 |
| NY | 89 | 100 | | | | |
| NC | 211 | 214 | 83 | 83 | 128 | 131 |
| OH | 629 | 636 | | | | |
| OK | 78 | 79 | 45 | 45 | 33 | 34 |
| OR | 71 | 71 | 69 | 69 | 2 | 2 |
| PA | 562 | 556 | 548 | 541 | 14 | 15 |
| SC | 120 | 115 | 101 | 95 | 19 | 20 |
| SD | 76 | 80 | 76 | 80 | 0 | 0 |
| TX | 396 | 411 | | | | |
| VA | 59 | 68 | 27 | 33 | 32 | 35 |
| WA | 110 | 123 | | | | |
| WI | 98 | 109 | | | | |
| 30 Sts | 6,948 | 7,151 | 5,973 | 6,164 | 975 | 986 |
| Oth Sts ² | 491 | 488 | 408 | 392 | 83 | 97 |
| US | 7,439 | 7,639 | 6,381 | 6,556 | 1,058 | 1,083 |

¹ Data by type of flock not shown for some States to avoid disclosing individual operations.

² Estimates for individual States are not available.

**Egg Production: By Type, State, and United States,
November 2003-04**

| State | Total Production | | Table Eggs ¹ | | Hatching Eggs ¹ | |
|----------------------|---------------------|---------------------|-------------------------|---------------------|----------------------------|---------------------|
| | 2003 | 2004 | 2003 | 2004 | 2003 | 2004 |
| | <i>Million Eggs</i> | <i>Million Eggs</i> | <i>Million Eggs</i> | <i>Million Eggs</i> | <i>Million Eggs</i> | <i>Million Eggs</i> |
| AL | 178 | 174 | 48 | 42 | 130 | 132 |
| AR | 276 | 266 | 97 | 98 | 179 | 168 |
| CA | 460 | 460 | | | | |
| CO | 94 | 88 | | | | |
| CT | 67 | 67 | | | | |
| FL | 245 | 252 | 236 | 245 | 9 | 7 |
| GA | 422 | 420 | 256 | 257 | 166 | 163 |
| HI | 9.6 | 9.7 | 9.6 | 9.7 | 0 | 0 |
| IL | 85 | 100 | 82 | 96 | 3 | 4 |
| IN | 508 | 516 | 496 | 504 | 12 | 12 |
| IA | 938 | 1,018 | | | | |
| ME | 94 | 57 | | | | |
| MD | 70 | 72 | 68 | 70 | 2 | 2 |
| MI | 159 | 175 | | | | |
| MN | 236 | 240 | 228 | 232 | 8 | 8 |
| MS | 130 | 134 | 42 | 40 | 88 | 94 |
| MO | 148 | 163 | | | | |
| NE | 261 | 265 | 261 | 265 | 0 | 0 |
| NY | 87 | 97 | | | | |
| NC | 206 | 208 | 80 | 79 | 126 | 129 |
| OH | 629 | 622 | | | | |
| OK | 76 | 75 | 44 | 43 | 32 | 32 |
| OR | 68 | 66 | 66 | 64 | 2 | 2 |
| PA | 536 | 545 | 522 | 530 | 14 | 15 |
| SC | 118 | 115 | 99 | 96 | 19 | 19 |
| SD | 73 | 78 | 73 | 78 | 0 | 0 |
| TX | 392 | 401 | | | | |
| VA | 60 | 68 | 27 | 34 | 33 | 34 |
| WA | 110 | 117 | | | | |
| WI | 99 | 109 | | | | |
| 30 Sts | 6,835 | 6,978 | 5,893 | 6,030 | 942 | 947 |
| Oth Sts ² | 491 | 477 | 408 | 386 | 83 | 92 |
| US | 7,326 | 7,455 | 6,301 | 6,416 | 1,025 | 1,039 |

¹ Data by type of flock not shown for some States to avoid disclosing individual operations.

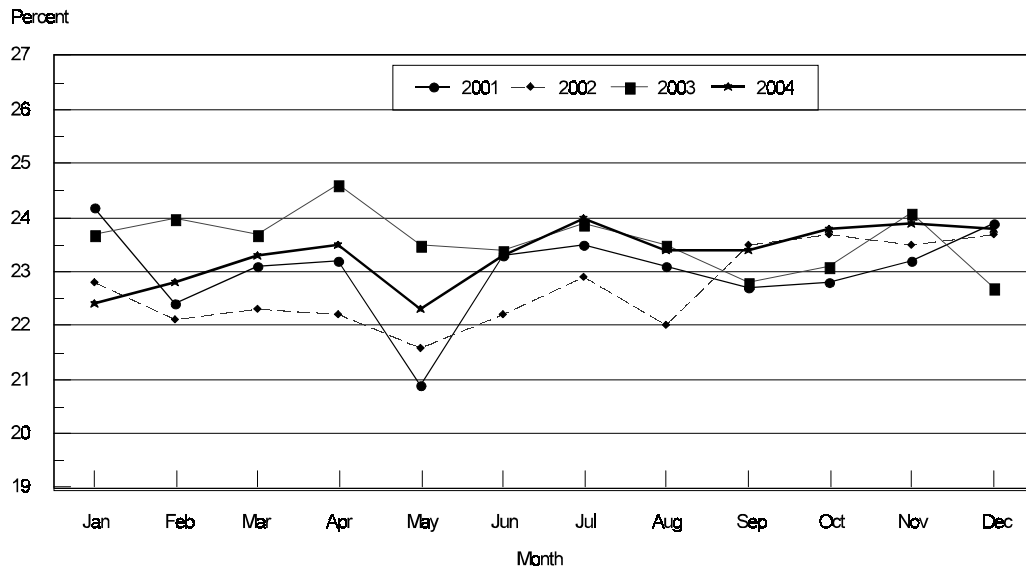
² Estimates for individual States are not available.

**Forced Molt: Percent of All Layers by Month,
United States, 2003-04¹**

| Month | Percent Being Molted | | Percent with Molt Completed | |
|-------|----------------------|----------------|-----------------------------|----------------|
| | 2003 | 2004 | 2003 | 2004 |
| | <i>Percent</i> | <i>Percent</i> | <i>Percent</i> | <i>Percent</i> |
| Jan | 4.4 | 3.9 | 23.7 | 22.4 |
| Feb | 4.5 | 4.9 | 24.0 | 22.8 |
| Mar | 3.3 | 4.6 | 23.7 | 23.3 |
| Apr | 2.2 | 2.6 | 24.6 | 23.5 |
| May | 4.3 | 4.7 | 23.5 | 22.3 |
| Jun | 4.2 | 4.8 | 23.4 | 23.3 |
| Jul | 4.3 | 4.6 | 23.9 | 24.0 |
| Aug | 4.1 | 4.5 | 23.5 | 23.4 |
| Sep | 3.9 | 4.5 | 22.8 | 23.4 |
| Oct | 5.2 | 3.8 | 23.1 | 23.8 |
| Nov | 3.4 | 4.2 | 24.1 | 23.9 |
| Dec | 2.5 | 2.6 | 22.7 | 23.8 |

¹ As of first of month.

**All Layers: United States
Percent Molt Completed, 2001 - 2004
First of Month**



**Forced Molt: Percent of All Layers by State
and United States, December 2003-04 ¹**

| State | Percent Being Molted | | Percent with Molt Completed | |
|----------------------|----------------------|----------------|-----------------------------|----------------|
| | 2003 | 2004 | 2003 | 2004 |
| | <i>Percent</i> | <i>Percent</i> | <i>Percent</i> | <i>Percent</i> |
| AL | 0.5 | 0.0 | 7.0 | 5.0 |
| AR | 0.0 | 1.0 | 11.0 | 10.5 |
| CA | 2.0 | 3.0 | 35.5 | 33.0 |
| CO | 0.0 | 0.0 | 20.5 | 23.0 |
| CT | 0.0 | 3.4 | 14.0 | 10.4 |
| FL | 2.0 | 2.0 | 27.0 | 21.5 |
| GA | 0.5 | 2.0 | 17.5 | 17.0 |
| HI | 7.5 | 8.5 | 49.0 | 52.0 |
| IL | 3.0 | 1.0 | 32.0 | 34.5 |
| IN | 2.0 | 0.0 | 32.0 | 33.0 |
| IA | 2.0 | 5.0 | 28.0 | 34.0 |
| ME | 0.0 | 0.0 | 0.0 | 0.0 |
| MD | 0.0 | 5.5 | 25.5 | 32.0 |
| MI | 5.0 | 3.5 | 33.5 | 32.0 |
| MN | 3.5 | 3.5 | 26.0 | 22.0 |
| MS | 0.0 | 0.0 | 12.0 | 12.5 |
| MO | 2.0 | 0.5 | 12.0 | 23.0 |
| NE | 6.5 | 6.0 | 22.5 | 21.0 |
| NY | 0.0 | 1.5 | 4.0 | 5.5 |
| NC | 0.0 | 0.5 | 10.5 | 7.0 |
| OH | 5.5 | 3.5 | 22.0 | 29.0 |
| OK | 0.0 | 0.0 | 8.0 | 5.5 |
| OR | 2.5 | 4.0 | 24.5 | 27.5 |
| PA | 3.0 | 1.0 | 23.5 | 13.0 |
| SC | 0.0 | 2.0 | 21.0 | 32.5 |
| SD | 9.5 | 3.0 | 21.0 | 41.5 |
| TX | 5.5 | 1.5 | 17.5 | 21.0 |
| VA | 0.5 | 0.0 | 7.0 | 14.0 |
| WA | 3.0 | 11.0 | 45.0 | 33.0 |
| WI | 2.5 | 3.0 | 31.5 | 27.5 |
| 30 Sts | 2.5 | 2.5 | 22.5 | 23.5 |
| Oth Sts ² | 2.2 | 3.2 | 24.9 | 27.2 |
| US | 2.5 | 2.6 | 22.7 | 23.8 |

¹ As of first of month.

² Estimates for individual States are not available.

**Hatchery Production: Eggs in Incubators, Chicks Hatched,
and Placements by Type, United States, November-December 2003-04**

| Item | 2003 | 2004 | 2004 as % of 2003 |
|---|-----------------|-----------------|-------------------------|
| | <i>1,000</i> | <i>1,000</i> | <i>Percent</i> |
| Egg-Type | | | |
| Eggs in Incubators on Dec 1 | 32,660 | 35,902 | 110 |
| Chicks Hatched During Nov | 30,241 | 38,421 | 127 |
| Chicks Hatched Jan thru Nov | 382,424 | 400,462 | 105 |
| Pullets Hatched During Nov for Intended Placements in Hatchery Supply Flocks 7-18 Month Earlier ¹ | 319 2,954 | 225 3,325 | 71 113 |
| Broiler-Type | | | |
| Eggs in Incubators on Dec 1 | 638,154 | 644,675 | 101 |
| Chicks Hatched During Nov | 707,627 | 730,789 | 103 |
| Chicks Hatched Jan thru Nov | 8,299,651 | 8,537,907 | 103 |
| Pullets Hatched During Nov for Intended Placements in Hatchery Supply Flocks 7-15 Months Earlier ² | 6,946 60,504 | 7,008 61,659 | 101 102 |

¹ 2004 includes pullet chicks hatched May 2003 through Apr 2004.

² 2004 includes pullet chicks hatched Aug 2003 through Apr 2004.

**Egg-Type Eggs in Incubators: By Region and United States,
December 1, 2003-04**

| Geographic Division | 2003 | 2004 | 2004 as % of 2003 |
|------------------------|---------------|---------------|-------------------------|
| | <i>1,000</i> | <i>1,000</i> | <i>Percent</i> |
| North Atlantic | 5,249 | 6,793 | 129 |
| E North Central | 7,763 | 8,008 | 103 |
| W North Central | 8,173 | 6,977 | 85 |
| South Atlantic | 2,152 | 4,590 | 213 |
| South Central | 5,314 | 5,234 | 98 |
| West | 4,009 | 4,300 | 107 |
| US | 32,660 | 35,902 | 110 |

Regional Listing:

North Atlantic = CT, ME, MA, NH, NJ, NY, PA, RI, VT.

E North Central = IL, IN, MI, OH, WI.

W North Central = IA, KS, MN, MO, NE, ND, SD.

South Atlantic = DE, FL, GA, MD, NC, SC, VA, WV.

South Central = AL, AR, KY, LA, MS, OK, TN, TX.

West = AK, AZ, CA, CO, HI, ID, MT, NM, NV, OR, UT, WA, WY.

**Egg-Type Chicks Hatched: By State and United States,
November 2003-04**

| State | November | | | Jan-Nov | | |
|----------------------|--------------|--------------|-------------------------|--------------|--------------|-------------------------|
| | 2003 | 2004 | 2004 as % of 2003 | 2003 | 2004 | 2004 as % of 2003 |
| | <i>1,000</i> | <i>1,000</i> | <i>Percent</i> | <i>1,000</i> | <i>1,000</i> | <i>Percent</i> |
| AR | 943 | 1,215 | 129 | 9,247 | 9,543 | 103 |
| FL | 688 | 830 | 121 | 7,369 | 6,897 | 94 |
| GA | 1,728 | 2,035 | 118 | 25,708 | 25,815 | 100 |
| IN | 4,023 | 5,261 | 131 | 53,010 | 54,651 | 103 |
| IA | 4,989 | 6,465 | 130 | 64,606 | 67,247 | 104 |
| MN | 1,110 | 820 | 74 | 13,609 | 9,689 | 71 |
| PA | 3,873 | 5,787 | 149 | 48,800 | 56,861 | 117 |
| Oth Sts ¹ | 12,887 | 16,008 | 124 | 160,075 | 169,759 | 106 |
| US | 30,241 | 38,421 | 127 | 382,424 | 400,462 | 105 |

¹ Not published separately to avoid disclosing data for individual operations.

Egg-Type Chicks Hatched: By Month, United States, 2002-04

| Month | By Months | | | | Cumulative | | | |
|-------|--------------|--------------|--------------|-------------------------|--------------|--------------|--------------|-------------------------|
| | 2002 | 2003 | 2004 | 2004 as % of 2003 | 2002 | 2003 | 2004 | 2004 as % of 2003 |
| | <i>1,000</i> | <i>1,000</i> | <i>1,000</i> | <i>Percent</i> | <i>1,000</i> | <i>1,000</i> | <i>1,000</i> | <i>Percent</i> |
| Jan | 35,655 | 33,521 | 35,350 | 105 | 35,655 | 33,521 | 35,350 | 105 |
| Feb | 34,473 | 30,510 | 32,078 | 105 | 70,128 | 64,031 | 67,428 | 105 |
| Mar | 36,985 | 36,775 | 37,530 | 102 | 107,113 | 100,806 | 104,958 | 104 |
| Apr | 38,096 | 37,804 | 37,514 | 99 | 145,209 | 138,610 | 142,472 | 103 |
| May | 38,760 | 37,631 | 38,631 | 103 | 183,969 | 176,241 | 181,103 | 103 |
| Jun | 35,144 | 36,602 | 38,066 | 104 | 219,113 | 212,843 | 219,169 | 103 |
| Jul | 35,581 | 35,566 | 34,127 | 96 | 254,694 | 248,409 | 253,296 | 102 |
| Aug | 35,689 | 33,199 | 36,024 | 109 | 290,383 | 281,608 | 289,320 | 103 |
| Sep | 35,742 | 35,763 | 36,750 | 103 | 326,125 | 317,371 | 326,070 | 103 |
| Oct | 32,157 | 34,812 | 35,971 | 103 | 358,282 | 352,183 | 362,041 | 103 |
| Nov | 31,154 | 30,241 | 38,421 | 127 | 389,436 | 382,424 | 400,462 | 105 |
| Dec | 32,113 | 33,645 | | | 421,549 | 416,069 | | |

**Intended Placements: Egg-Type Pullet Chicks for Hatchery Supply
Flocks by Month and Total, United States, 2002-04¹**

| Month | Pullet Chicks Hatched | | | 2004 as % of 2003 | Cumulative Potential Placements Relative to Current Supply Flocks 7-18 Months Earlier ² | | |
|-------|-----------------------|--------------|--------------|-------------------------|--|--------------|--------------|
| | 2002 | 2003 | 2004 | | 2003 | 2004 | 2005 |
| | <i>1,000</i> | <i>1,000</i> | <i>1,000</i> | <i>Percent</i> | <i>1,000</i> | <i>1,000</i> | <i>1,000</i> |
| Jan | 228 | 210 | 164 | 78 | 2,974 | 3,012 | 3,194 |
| Feb | 247 | 225 | 285 | 127 | 2,916 | 2,960 | 3,207 |
| Mar | 237 | 319 | 401 | 126 | 2,886 | 2,927 | 3,332 |
| Apr | 295 | 280 | 311 | 111 | 2,944 | 2,923 | 3,264 |
| May | 319 | 289 | 255 | 88 | 2,980 | 3,047 | 3,222 |
| Jun | 221 | 309 | 212 | 69 | 2,946 | 3,139 | 3,128 |
| Jul | 282 | 230 | 243 | 106 | 2,927 | 3,198 | |
| Aug | 221 | 188 | 313 | 166 | 2,909 | 3,152 | |
| Sep | 277 | 273 | 205 | 75 | 2,887 | 3,212 | |
| Oct | 186 | 310 | 268 | 86 | 2,969 | 3,294 | |
| Nov | 227 | 319 | 225 | 71 | 2,954 | 3,325 | |
| Dec | 187 | 246 | | | 2,924 | 3,291 | |
| Total | 2,927 | 3,198 | | | | | |

¹ Reported by leading breeders. Coverage may not be 100 percent. Includes expected pullet chicks from eggs sold during the preceding month at the rate of 125 pullet chicks per 30 dozen case of eggs.

² For November 2004, includes breeder pullet chicks hatched May 2003 through Apr 2004. The 7-18 months represent the first laying cycle. Molting and additional laying cycles will increase the cumulative potential placements.

**Broiler-Type Eggs in Incubators: By Region
and United States, December 1, 2003-04**

| Geographic Division | 2003 | 2004 | 2004 as % of 2003 |
|---------------------|--------------|--------------|-------------------------|
| | <i>1,000</i> | <i>1,000</i> | <i>Percent</i> |
| North Atlantic | 12,332 | 12,228 | 99 |
| E North Central | 8,206 | 8,405 | 102 |
| W North Central | 22,517 | 22,061 | 98 |
| South Atlantic | 230,943 | 232,414 | 101 |
| South Central | 339,356 | 344,089 | 101 |
| West | 24,800 | 25,478 | 103 |
| US | 638,154 | 644,675 | 101 |

**Broiler-Type Chicks Hatched: By State
and United States, November 2003-04**

| State | November | | | Jan-Nov | | |
|----------------------|--------------|--------------|-------------------------|--------------|--------------|-------------------------|
| | 2003 | 2004 | 2004 as % of 2003 | 2003 | 2004 | 2004 as % of 2003 |
| | <i>1,000</i> | <i>1,000</i> | <i>Percent</i> | <i>1,000</i> | <i>1,000</i> | <i>Percent</i> |
| AL | 96,042 | 100,202 | 104 | 1,126,129 | 1,195,408 | 106 |
| AR | 102,438 | 99,960 | 98 | 1,197,061 | 1,225,154 | 102 |
| DE | 12,511 | 12,820 | 102 | 143,130 | 148,102 | 103 |
| FL | 4,781 | 4,735 | 99 | 57,319 | 53,502 | 93 |
| GA | 106,271 | 111,514 | 105 | 1,249,002 | 1,301,841 | 104 |
| KY | 21,814 | 23,064 | 106 | 261,764 | 275,740 | 105 |
| LA | 13,529 | 13,587 | 100 | 150,290 | 151,465 | 101 |
| MD | 29,951 | 29,502 | 99 | 367,530 | 342,319 | 93 |
| MS | 62,361 | 66,989 | 107 | 755,168 | 781,262 | 103 |
| NC | 61,568 | 62,238 | 101 | 708,338 | 717,012 | 101 |
| OK | 21,616 | 22,506 | 104 | 248,363 | 256,370 | 103 |
| PA | 11,588 | 12,908 | 111 | 137,341 | 143,696 | 105 |
| SC | 14,162 | 15,958 | 113 | 178,343 | 152,741 | 86 |
| TX | 48,962 | 50,554 | 103 | 579,124 | 595,383 | 103 |
| VA | 22,501 | 22,555 | 100 | 257,267 | 259,510 | 101 |
| CA, MO, TN, & WV | 56,624 | 60,654 | 107 | 647,308 | 694,874 | 107 |
| 19 Sts ¹ | 686,719 | 709,746 | 103 | 8,063,477 | 8,294,379 | 103 |
| Oth Sts ² | 20,908 | 21,043 | 101 | 236,174 | 243,528 | 103 |
| US | 707,627 | 730,789 | 103 | 8,299,651 | 8,537,907 | 103 |

¹ States in the weekly hatchery production estimating program.

² Not published separately to avoid disclosing data for individual operations.

Broiler-Type Chicks Hatched: By Month, United States, 2002-04

| Month | By Months | | | | Cumulative | | | |
|-------|--------------|--------------|--------------|-------------------------|--------------|--------------|--------------|-------------------------|
| | 2002 | 2003 | 2004 | 2004 as % of 2003 | 2002 | 2003 | 2004 | 2004 as % of 2003 |
| | <i>1,000</i> | <i>1,000</i> | <i>1,000</i> | <i>Percent</i> | <i>1,000</i> | <i>1,000</i> | <i>1,000</i> | <i>Percent</i> |
| Jan | 776,961 | 759,674 | 773,970 | 102 | 776,961 | 759,674 | 773,970 | 102 |
| Feb | 703,323 | 693,549 | 727,936 | 105 | 1,480,284 | 1,453,223 | 1,501,906 | 103 |
| Mar | 791,093 | 774,354 | 791,149 | 102 | 2,271,377 | 2,227,577 | 2,293,055 | 103 |
| Apr | 765,457 | 760,638 | 774,452 | 102 | 3,036,834 | 2,988,215 | 3,067,507 | 103 |
| May | 799,288 | 792,813 | 809,725 | 102 | 3,836,122 | 3,781,028 | 3,877,232 | 103 |
| Jun | 776,343 | 774,679 | 785,844 | 101 | 4,612,465 | 4,555,707 | 4,663,076 | 102 |
| Jul | 781,701 | 777,838 | 806,827 | 104 | 5,394,166 | 5,333,545 | 5,469,903 | 103 |
| Aug | 780,030 | 784,037 | 809,820 | 103 | 6,174,196 | 6,117,582 | 6,279,723 | 103 |
| Sep | 740,388 | 739,481 | 769,865 | 104 | 6,914,584 | 6,857,063 | 7,049,588 | 103 |
| Oct | 720,564 | 734,961 | 757,530 | 103 | 7,635,148 | 7,592,024 | 7,807,118 | 103 |
| Nov | 690,061 | 707,627 | 730,789 | 103 | 8,325,209 | 8,299,651 | 8,537,907 | 103 |
| Dec | 753,883 | 780,094 | | | 9,079,092 | 9,079,745 | | |

**Intended Placements: Broiler-Type Pullet Chicks for Hatchery
Supply Flocks by Month and Total, 2002-04 ¹**

| Month | Pullet Chicks Hatched | | | 2004 as % of 2003 | Cumulative Potential Placements Relative to Current Supply Flocks 7-15 Months Earlier ² | | |
|---------------------------------------|-----------------------|--------------|--------------|-------------------------|--|--------------|--------------|
| | 2002 | 2003 | 2004 | | 2003 | 2004 | 2005 |
| | <i>1,000</i> | <i>1,000</i> | <i>1,000</i> | <i>Percent</i> | <i>1,000</i> | <i>1,000</i> | <i>1,000</i> |
| US Place- ments | | | | | | | |
| Jan | 6,264 | 6,269 | 6,811 | 109 | 62,473 | 60,450 | 61,823 |
| Feb | 7,275 | 6,659 | 7,340 | 110 | 62,371 | 61,256 | 62,345 |
| Mar | 6,775 | 7,038 | 6,815 | 97 | 62,559 | 61,719 | 62,679 |
| Apr | 6,814 | 6,735 | 6,402 | 95 | 62,658 | 61,898 | 63,459 |
| May | 7,597 | 7,323 | 7,492 | 102 | 62,659 | 61,941 | 63,235 |
| Jun | 7,206 | 6,748 | 6,727 | 100 | 62,322 | 62,228 | 62,903 |
| Jul | 6,602 | 7,071 | 6,834 | 97 | 62,022 | 62,168 | |
| Aug | 7,449 | 7,401 | 7,280 | 98 | 61,477 | 62,244 | |
| Sep | 6,676 | 6,654 | 7,758 | 117 | 60,539 | 62,261 | |
| Oct | 6,265 | 6,312 | 6,587 | 104 | 60,371 | 62,328 | |
| Nov | 6,938 | 6,946 | 7,008 | 101 | 60,504 | 61,659 | |
| Dec | 6,475 | 6,978 | | | 60,378 | 61,750 | |
| Annual Total | 82,336 | 82,134 | | | | | |
| Total Place- ments ³ | | | | | | | |
| Jan | 7,415 | 7,388 | 7,812 | 106 | | | |
| Feb | 8,491 | 8,094 | 8,251 | 102 | | | |
| Mar | 7,997 | 8,549 | 7,801 | 91 | | | |
| Apr | 8,119 | 8,062 | 7,288 | 90 | | | |
| May | 8,982 | 8,604 | 8,596 | 100 | | | |
| Jun | 8,802 | 8,341 | 8,100 | 97 | | | |
| Jul | 8,083 | 8,555 | 8,149 | 95 | | | |
| Aug | 8,913 | 8,756 | 8,416 | 96 | | | |
| Sep | 8,002 | 8,338 | 9,184 | 110 | | | |
| Oct | 7,438 | 7,695 | 7,766 | 101 | | | |
| Nov | 8,202 | 8,246 | 8,291 | 101 | | | |
| Dec | 8,016 | 8,185 | | | | | |
| Annual Total | 98,460 | 98,813 | | | | | |

¹ Reported by leading breeders. Coverage may not be 100 percent. Includes expected pullet chicks from eggs sold during the preceding month at the rate of 125 pullet chicks per 30 dozen case of eggs.

² For Nov 2004, includes breeder pullet chicks hatched Aug 2003 through Apr 2004.

³ U.S. production of intended placements worldwide.

Procedures and Reliability

Data Sources: Primary data for the "**Chickens and Eggs**" report are from weekly and/or monthly questionnaires sent to producers. An attempt is made to collect information for layer and egg estimates from each known contractor and independent producer who has over 30,000 table egg layers. Coverage for operations with less than 30,000 table egg layers are estimated each month based on data reported in December. Approximately 900 contractors, independent egg producers, and started pullet operations are contacted each month. All known hatcheries, approximately 330, are contacted for information on a weekly and/or monthly basis.

Revisions: The previous month's estimates are subject to revision if late reports or corrected data indicates a different level. Additionally, revisions needed after the monthly report will be made at the end of the marketing year and published in the annual summaries of "**Chickens and Eggs Summary**" and "**Hatchery Production**".

Procedures and Reliability: Operations are mailed a questionnaire and given adequate time to respond by mail. Those that do not respond are phoned. Great care is exercised to ensure that all operations are accounted for during each survey period. However, there are usually missing reports that must be accounted for in the estimates.

Sound statistical methodology is employed to derive estimates from the reported data. All data are checked for unusual values. All operations' data are compared to their own past operating profiles and also to trends from other operations. Data for missing operations are estimated based on similar operations or historical data. Survey data are subject to non-sampling errors such as omissions and mistakes in reporting and in processing. While these errors cannot be measured directly, they are minimized by reviewing all data for consistency and reasonableness.

Egg-type chicks hatched are comprised of all chicks of egg-type domesticated breeds including males and chicks destined for hatchery supply flocks and research purposes. The relationship of chicks hatched to chicken inventory and poultry marketings is carefully monitored. The disposition of egg-type chicks hatched prior to placement into the laying flock can vary significantly, which can make comparisons to changes in layer inventory inconsistent over time.

Intended placement data reported by leading breeders include pullet chicks expected from eggs sold the preceding month. The breeders in this report account for a large percentage of replacement pullets for hatchery supply flocks. Production of replacement pullets by these breeders indicates the number of pullets available to hatchery supply flocks several months before the pullets will actually move into the flocks. "Hatchery Supply Flocks" include all generations of layers which could lay eggs to supply a hatchery. This includes the generations of parents, grandparents, great-grandparents, pedigree, etc. Also included are research flocks, vaccine flocks, and specific pathogen-free flocks. The broiler cumulative potential placements are a moving total of the intended placements 7-15 months earlier. The egg-type cumulative potential placements of 7-18 months represent the first laying cycle. Molting and additional laying cycles will increase the cumulative potential placements of egg-type hatching flocks.

ACCESS TO REPORTS!!

For your convenience, there are several ways to obtain NASS reports, data products, and services:

INTERNET ACCESS

All NASS reports are available free of charge on the worldwide Internet. For access, connect to the Internet and go to the NASS Home Page at: www.usda.gov/nass/. Select "Today's Reports" or Publications and then Reports Calendar or Publications and then Search, by Title or Subject.

E-MAIL SUBSCRIPTION

All NASS reports are available by subscription free of charge direct to your e-mail address. Starting with the NASS Home Page at www.usda.gov/nass/, click on **Publications**, then click on the **Subscribe by E-mail** button which takes you to the page describing e-mail delivery of reports. Finally, click on **Go to the Subscription Page** and follow the instructions.

PRINTED REPORTS OR DATA PRODUCTS

CALL OUR TOLL-FREE ORDER DESK: 800-999-6779 (U.S. and Canada)
Other areas, please call 703-605-6220 FAX: 703-605-6900
(Visa, MasterCard, check, or money order acceptable for payment.)

ASSISTANCE

For **assistance** with general agricultural statistics or further information about NASS or its products or services, contact the **Agricultural Statistics Hotline** at **800-727-9540**, 7:30 a.m. to 4:00 p.m. ET, or e-mail: nass@nass.usda.gov.

The United States Department of Agriculture (USDA) prohibits discrimination in all its programs on the basis of race, color, national origin, gender, religion, age, disability, political beliefs, sexual orientation, and marital or family status. (Not all prohibited bases apply to all programs.) Persons with disabilities who require alternative means for communication of program information (braille, large print, audiotape, etc.) should contact the USDA's TARGET Center at 202-720-2600 (voice and TDD).

To file a complaint of discrimination, write USDA, Director, Office of Civil Rights, Room 326-W, Whitten Building, 1400 Independence Avenue, SW, Washington, D.C., 20250-9410, or call 202-720-5964 (voice or TDD). USDA is an equal opportunity provider and employer.