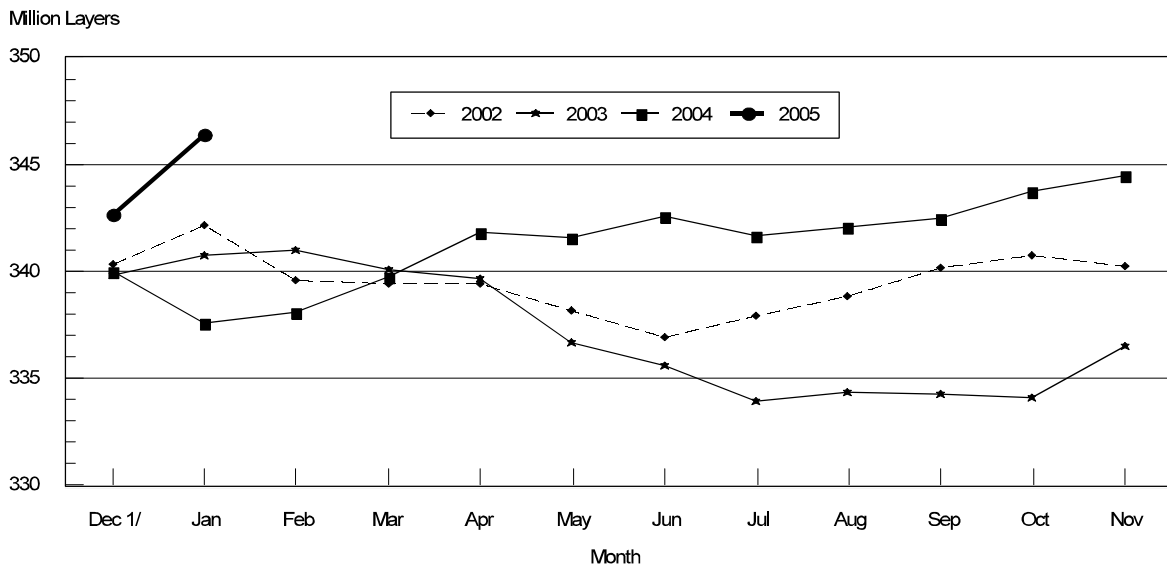


Released January 24, 2005, by the National Agricultural Statistics Service (NASS), Agricultural Statistics Board, U.S. Department of Agriculture. For information on *Chickens and Eggs* call Sharyn Lavender at (202) 720-3244, for "Hatch" call Jody Roberts at (202) 690-8632, office hours 7:30 a.m. to 4:00 p.m. ET.

December Egg Production Up 2 Percent

U.S. egg production totaled 7.70 billion during December 2004, up 2 percent from last year. Production included 6.62 billion table eggs, and 1.08 billion hatching eggs, of which 1.02 billion were broiler-type and 62 million were egg-type. The total number of layers during December 2004 averaged 345 million, up 2 percent from a year earlier. December egg production per 100 layers was 2,235 eggs, up 1 percent from December 2003.

All Layers: 1st of Month United States , 2002 - 2005



1/ Previous Year

All layers in the U.S. on January 1, 2005, totaled 346 million, up 3 percent from a year ago. The 346 million layers consisted of 287 million layers producing table or market type eggs, 56.2 million layers producing broiler-type hatching eggs, and 2.72 million layers producing egg-type hatching eggs. Rate of lay per day on January 1, 2005, averaged 71.3 eggs per 100 layers, up slightly from a year ago.

Egg-Type Chicks Hatched Up 10 Percent

Egg-type chicks hatched during December totaled 37.0 million, up 10 percent from December 2003. Eggs in incubators totaled 34.4 million on January 1, 2005, up 9 percent from a year ago.

Domestic placements of egg-type pullet chicks for future hatchery supply flocks by leading breeders totaled 235,000 during December 2004, down 4 percent from December 2003.

Broiler Hatch Up 2 Percent

The December 2004 hatch of broiler-type chicks, at 793 million, was up 2 percent from December of the previous year. There were 651 million eggs in incubators on January 1, 2005, up 2 percent from a year earlier.

Leading breeders placed 6.08 million broiler-type pullet chicks for future domestic hatchery supply flocks during December 2004, down 13 percent from December 2003.

**All Layers: Average Number on Hand During the Month,
United States, 2002-05**

Month	2002	2003	2004	2005
	<i>1,000 Layers</i>	<i>1,000 Layers</i>	<i>1,000 Layers</i>	<i>1,000 Layers</i>
Dec ¹	341,243	340,316	338,243	344,533
Jan	340,885	340,910	337,749	
Feb	339,529	340,575	338,942	
Mar	339,434	339,885	341,000	
Apr	338,809	338,182	341,912	
May	337,566	336,164	342,085	
Jun	337,339	334,789	342,140	
Jul	337,849	334,179	341,660	
Aug	338,397	334,332	342,034	
Sep	339,511	334,198	343,169	
Oct	340,461	335,333	344,072	
Nov	340,490	338,283	343,482	

¹ December preceding year.

**Eggs: Production During the Month by Type,
United States, 2004-05**

Month	Total Eggs		Table Eggs		Hatching Eggs	
	2004	2005	2004	2005	2004	2005
	<i>Million Eggs</i>	<i>Million Eggs</i>	<i>Million Eggs</i>	<i>Million Eggs</i>	<i>Million Eggs</i>	<i>Million Eggs</i>
Dec ¹	7,520	7,699	6,466	6,619	1,055	1,080
Jan	7,371		6,315		1,056	
Feb	6,890		5,890		1,001	
Mar	7,532		6,446		1,087	
Apr	7,343		6,276		1,067	
May	7,499		6,386		1,113	
Jun	7,274		6,201		1,072	
Jul	7,536		6,441		1,095	
Aug	7,515		6,427		1,088	
Sep	7,324		6,269		1,056	
Oct	7,639		6,556		1,083	
Nov	7,455		6,416		1,039	
During Year	88,898	7,699	76,089	6,619	12,812	1,080

¹ December preceding year.

**Layers and Eggs: Layers on Hand and Eggs Produced by Type,
and Forced Molt, United States, November-December 2003-04**

Item	Unit	2003	2004	2004 as % of 2003
Layers During Nov	1,000			
All Layers		338,283	343,482	102
Table Egg Type		280,904	285,784	102
Hatching Egg Type		57,379	57,698	101
Broiler-Type Hatching		54,861	55,188	101
Egg-Type Hatching		2,518	2,510	100
Eggs per 100 Layers During Nov	Number			
All Layers		2,166	2,170	100
Table Egg Type		2,243	2,245	100
Hatching Egg Type		1,786	1,801	101
Broiler-Type Hatching		1,764	1,776	101
Egg-Type Hatching		2,264	2,351	104
Eggs Produced During Nov	Million			
All Layers		7,326	7,455	102
Table Egg Type		6,301	6,416	102
Hatching Egg Type		1,025	1,039	101
Broiler-Type Hatching		968	980	101
Egg-Type Hatching		57	59	104
Layers on Dec 1	1,000			
All Layers		339,989	342,674	101
Table Egg Type		282,443	285,235	101
Hatching Egg Type		57,546	57,439	100
Broiler-Type Hatching		55,016	54,925	100
Egg-Type Hatching		2,530	2,514	99
Eggs per 100 Layers on Dec 1	Number			
All Layers		72.4	72.8	101
Table Egg Type		75.2	75.4	100
Hatching Egg Type		58.9	60.1	102
Broiler-Type Hatching		58.1	59.3	102
Egg-Type Hatching		75.8	78.0	103
Forced Molt Layers on Dec 1	Percent			
Percent Being Molted		2.5	2.6	104
Percent with Molt Completed		22.7	23.8	105
Layers Sold for Slaughter During Nov	1,000	14,043	13,972	99
Layers Rendered, Died, Destroyed, Composted or Disappeared For Any Reason During Nov	1,000	5,792	6,222	107
Pullets on Dec 1	1,000	100,321	100,346	100
Pullets Added During Nov ¹	1,000	23,157	23,245	100

¹ Pullet chicks less than 3 days old added to pullet flocks.

**Layers and Eggs: Layers on Hand and Eggs Produced by Type,
and Forced Molt, United States, December-January 2003-05**

Item	Unit	2003	2004	2004 as % of 2003
Layers During Dec	1,000			
All Layers		338,243	344,533	102
Table Egg Type		280,746	286,330	102
Hatching Egg Type		57,497	58,203	101
Broiler-Type Hatching		55,009	55,584	101
Egg-Type Hatching		2,488	2,619	105
Eggs per 100 Layers During Dec	Number			
All Layers		2,223	2,235	101
Table Egg Type		2,303	2,312	100
Hatching Egg Type		1,835	1,856	101
Broiler-Type Hatching		1,807	1,831	101
Egg-Type Hatching		2,452	2,367	97
Eggs Produced During Dec	Million			
All Layers		7,520	7,699	102
Table Egg Type		6,466	6,619	102
Hatching Egg Type		1,055	1,080	102
Broiler-Type Hatching		994	1,018	102
Egg-Type Hatching		61	62	102
		2004	2005	2005 as % of 2004
Layers on Jan 1	1,000			
All Layers		337,571	346,357	103
Table Egg Type		280,096	287,409	103
Hatching Egg Type		57,475	58,948	103
Broiler-Type Hatching		55,037	56,232	102
Egg-Type Hatching		2,438	2,716	111
Eggs per 100 Layers on Jan 1	Number			
All Layers		71.0	71.3	100
Table Egg Type		73.4	73.7	100
Hatching Egg Type		59.2	59.7	101
Broiler-Type Hatching		58.3	58.8	101
Egg-Type Hatching		80.1	76.7	96
Forced Molt Layers on Jan 1	Percent			
Percent Being Molted		3.9	4.1	105
Percent with Molt Completed		22.4	23.2	104
Layers Sold for Slaughter During Dec	1,000	15,708	13,996	89
Layers Rendered, Died, Destroyed, Composted or Disappeared For Any Reason During Dec		5,848	5,767	99
Pullets on Jan 1	1,000	100,807	101,325	101
Pullets Added During Dec ¹	1,000	23,598	24,654	104

¹ Pullet chicks less than 3 days old added to pullet flocks.

**Layers and Eggs: Layers on Hand and Eggs Produced by State
and United States, During November 2003-04**

State	Table Egg Layers in Flocks 30,000 and Above		All Layers ¹		Eggs per 100 for All Layers ¹	
	2003	2004	2003	2004	2003	2004
	<i>1,000</i>	<i>1,000</i>	<i>1,000</i>	<i>1,000</i>	<i>Number</i>	<i>Number</i>
AL	2,081	1,901	9,364	9,300	1,901	1,871
AR	4,341	4,168	14,637	14,196	1,886	1,874
CA	20,152	20,086	20,721	20,614	2,220	2,231
CO	3,595	3,430	4,010	3,970	2,344	2,217
CT	2,833	2,890	2,892	2,938	2,317	2,280
FL	10,473	10,523	11,009	10,944	2,225	2,303
GA	11,416	11,148	20,499	20,079	2,059	2,092
HI	465	472	499	512	1,924	1,895
IL	3,592	4,108	3,804	4,345	2,234	2,301
IN	22,162	22,281	22,880	23,033	2,220	2,240
IA	40,127	45,809	40,878	46,545	2,295	2,187
ME	4,109	2,679	4,158	2,732	2,261	2,086
MD	2,782	3,032	2,927	3,186	2,392	2,260
MI	6,708	7,353	6,959	7,603	2,285	2,302
MN	10,493	10,468	11,074	11,046	2,131	2,173
MS	1,876	1,708	6,801	6,906	1,911	1,940
MO	5,252	6,062	6,614	7,266	2,238	2,243
NE	11,702	11,962	11,790	12,037	2,214	2,202
NY	3,399	3,723	3,722	4,045	2,337	2,398
NC	3,425	3,295	10,769	10,826	1,913	1,921
OH	28,749	27,694	29,238	28,149	2,151	2,210
OK	1,951	1,906	4,103	4,000	1,852	1,875
OR	2,790	2,675	2,971	2,864	2,289	2,304
PA	22,191	21,910	23,946	23,630	2,238	2,306
SC	4,188	4,184	5,402	5,264	2,184	2,185
SD	3,152	3,196	3,352	3,396	2,178	2,297
TX	14,175	14,221	18,409	18,599	2,129	2,156
VA	1,232	1,363	3,101	3,227	1,935	2,107
WA	4,821	4,909	4,886	4,969	2,251	2,355
WI	3,796	4,472	4,314	5,002	2,295	2,179
Oth Sts ²	16,793	16,063	22,554	22,259	2,177	2,143
US	274,821	279,691	338,283	343,482	2,166	2,170

¹ Includes all layers and eggs produced in both table egg and hatching egg flocks regardless of size.

² Estimates for individual States are not available.

**Layers and Eggs: Layers on Hand and Eggs Produced by State
and United States, During December 2003-04**

State	Table Egg Layers in Flocks 30,000 and Above		All Layers ¹		Eggs per 100 for All Layers ¹	
	2003	2004	2003	2004	2003	2004
	<i>1,000</i>	<i>1,000</i>	<i>1,000</i>	<i>1,000</i>	<i>Number</i>	<i>Number</i>
AL	2,067	1,850	9,418	9,255	1,932	1,945
AR	4,263	4,508	14,522	14,796	1,914	1,953
CA	20,370	20,037	20,899	20,524	2,244	2,290
CO	3,747	3,414	4,223	3,958	2,415	2,324
CT	2,910	2,892	2,962	2,940	2,465	2,381
FL	10,470	10,216	10,989	10,657	2,321	2,308
GA	11,531	10,991	20,672	20,023	2,095	2,177
HI	447	473	482	512	2,012	1,973
IL	3,593	4,190	3,805	4,417	2,181	2,196
IN	22,686	22,542	23,427	23,287	2,275	2,280
IA	39,875	46,488	40,556	47,225	2,293	2,211
ME	4,090	2,670	4,135	2,723	2,322	2,350
MD	2,858	3,066	2,979	3,198	2,417	2,408
MI	6,813	7,231	7,064	7,482	2,265	2,326
MN	10,568	10,520	11,149	11,093	2,233	2,254
MS	1,887	1,706	6,751	6,959	1,955	1,940
MO	5,431	6,073	6,706	7,285	2,237	2,265
NE	11,668	11,925	11,743	12,000	2,282	2,267
NY	3,379	3,821	3,764	4,147	2,471	2,460
NC	3,404	3,370	10,775	10,934	2,005	1,994
OH	27,837	27,371	28,276	27,839	2,309	2,324
OK	1,925	1,898	4,111	4,046	1,922	1,903
OR	2,743	2,672	2,911	2,861	2,370	2,342
PA	21,743	22,174	23,504	23,920	2,314	2,379
SC	4,124	4,263	5,343	5,332	2,265	2,307
SD	3,147	3,079	3,347	3,279	2,181	2,318
TX	14,185	13,841	18,473	18,293	2,236	2,296
VA	1,320	1,313	3,205	3,185	1,934	2,135
WA	4,879	4,832	4,943	4,897	2,266	2,348
WI	3,762	4,675	4,284	5,207	2,381	2,247
Oth Sts ²	16,955	16,133	22,825	22,259	2,226	2,237
US	275,052	280,234	338,243	344,533	2,223	2,235

¹ Includes all layers and eggs produced in both table egg and hatching egg flocks regardless of size.

² Estimates for individual States are not available.

**Egg Production: By Type, State, and United States,
November 2003-04**

State	Total Production		Table Eggs ¹		Hatching Eggs ¹	
	2003	2004	2003	2004	2003	2004
	<i>Million Eggs</i>	<i>Million Eggs</i>	<i>Million Eggs</i>	<i>Million Eggs</i>	<i>Million Eggs</i>	<i>Million Eggs</i>
AL	178	174	48	42	130	132
AR	276	266	97	98	179	168
CA	460	460				
CO	94	88				
CT	67	67				
FL	245	252	236	245	9	7
GA	422	420	256	257	166	163
HI	9.6	9.7	9.6	9.7	0	0
IL	85	100	82	96	3	4
IN	508	516	496	504	12	12
IA	938	1,018				
ME	94	57				
MD	70	72	68	70	2	2
MI	159	175				
MN	236	240	228	232	8	8
MS	130	134	42	40	88	94
MO	148	163				
NE	261	265	261	265	0	0
NY	87	97				
NC	206	208	80	79	126	129
OH	629	622				
OK	76	75	44	43	32	32
OR	68	66	66	64	2	2
PA	536	545	522	530	14	15
SC	118	115	99	96	19	19
SD	73	78	73	78	0	0
TX	392	401				
VA	60	68	27	34	33	34
WA	110	117				
WI	99	109				
Oth Sts ²	491	477	408	386	83	92
US	7,326	7,455	6,301	6,416	1,025	1,039

¹ Data by type of flock not shown for some States to avoid disclosing individual operations.

² Estimates for individual States are not available.

**Egg Production: By Type, State, and United States,
December 2003-04**

State	Total Production		Table Eggs ¹		Hatching Eggs ¹	
	2003	2004	2003	2004	2003	2004
	<i>Million Eggs</i>	<i>Million Eggs</i>	<i>Million Eggs</i>	<i>Million Eggs</i>	<i>Million Eggs</i>	<i>Million Eggs</i>
AL	182	180	50	43	132	137
AR	278	289	100	109	178	180
CA	469	470				
CO	102	92				
CT	73	70				
FL	255	246	244	239	11	7
GA	433	436	263	265	170	171
HI	9.7	10.1	9.7	10.1	0	0
IL	83	97	80	94	3	3
IN	533	531	521	518	12	13
IA	930	1,044				
ME	96	64				
MD	72	77	70	75	2	2
MI	160	174				
MN	249	250	240	242	9	8
MS	132	135	42	40	90	95
MO	150	165				
NE	268	272	268	272	0	0
NY	93	102				
NC	216	218	84	82	132	136
OH	653	647				
OK	79	77	45	44	34	33
OR	69	67	67	65	2	2
PA	544	569	528	552	16	17
SC	121	123	101	104	20	19
SD	73	76	73	76	0	0
TX	413	420				
VA	62	68	28	34	34	34
WA	112	115				
WI	102	117				
Oth Sts ²	508	498	424	407	85	92
US	7,520	7,699	6,466	6,619	1,055	1,080

¹ Data by type of flock not shown for some States to avoid disclosing individual operations.

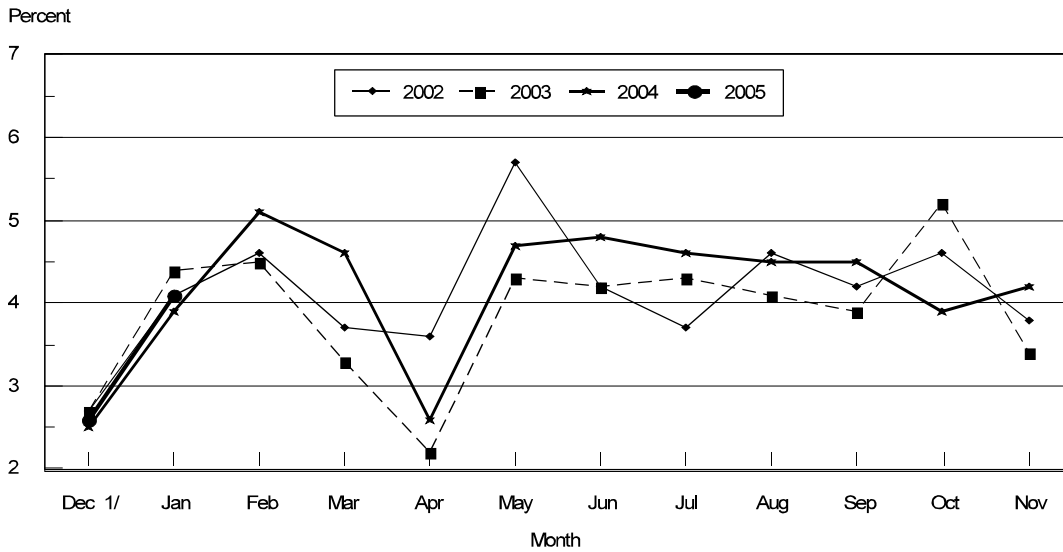
² Estimates for individual States are not available.

**Forced Molt: Percent of All Layers by Month,
United States, 2004-05 ¹**

Month	Percent Being Molted		Percent with Molt Completed	
	2004	2005	2004	2005
	<i>Percent</i>	<i>Percent</i>	<i>Percent</i>	<i>Percent</i>
Jan	3.9	4.1	22.4	23.2
Feb	4.9		22.8	
Mar	4.6		23.3	
Apr	2.6		23.5	
May	4.7		22.3	
Jun	4.8		23.3	
Jul	4.6		24.0	
Aug	4.5		23.4	
Sep	4.5		23.4	
Oct	3.8		23.8	
Nov	4.2		23.9	
Dec	2.6		23.8	

¹ As of first of month.

**All Layers : United States
Percent Being Molted, 2002 - 2005
First of Month**



1/ Previous Year

**Forced Molt: Percent of All Layers by State
and United States, January 2004-05 ¹**

State	Percent Being Molted		Percent with Molt Completed	
	2004	2005	2004	2005
	<i>Percent</i>	<i>Percent</i>	<i>Percent</i>	<i>Percent</i>
AL	0.5	1.5	4.5	4.5
AR	1.5	2.0	10.5	10.5
CA	7.0	3.0	31.0	36.0
CO	6.0	12.5	22.0	20.0
CT	0.0	3.4	12.5	10.4
FL	3.0	8.5	26.0	20.0
GA	3.0	3.0	17.0	16.0
HI	5.0	5.5	53.0	44.0
IL	15.0	11.0	28.5	28.5
IN	3.5	4.5	32.0	31.5
IA	4.0	5.5	31.5	36.5
ME	0.0	0.0	0.0	0.0
MD	2.5	8.0	18.5	33.5
MI	9.5	10.5	29.0	30.0
MN	4.0	5.0	25.0	24.5
MS	1.0	2.0	10.5	11.0
MO	3.0	1.5	15.0	22.5
NE	6.0	5.5	22.0	22.0
NY	3.5	2.5	1.5	5.0
NC	0.0	1.5	10.5	6.5
OH	5.0	4.0	24.0	24.0
OK	0.5	0.0	8.0	5.0
OR	5.0	6.5	38.0	28.5
PA	3.5	4.5	21.5	13.0
SC	2.5	2.5	24.5	30.0
SD	4.5	4.0	20.5	34.5
TX	5.5	2.5	10.5	20.0
VA	4.0	0.0	7.5	11.5
WA	8.5	5.0	47.0	28.0
WI	1.0	4.0	31.0	26.5
Oth Sts ²	3.3	2.6	26.6	26.0
US	3.9	4.1	22.4	23.2

¹ As of first of month.

² Estimates for individual States are not available.

**Hatchery Production: Eggs in Incubators, Chicks Hatched,
and Placements by Type, United States, December-January 2004-05**

Item	2004	2005	2005 as % of 2004
	<i>1,000</i>	<i>1,000</i>	<i>Percent</i>
Egg-Type			
Eggs in Incubators on Jan 1	31,655	34,437	109
Chicks Hatched During Dec ¹	33,645	37,035	110
Chicks Hatched Jan thru Dec ¹	416,069	437,497	105
Pullets Hatched During Jan for Intended Placements in Hatchery Supply Flocks 7-18 Month Earlier ²	246	235	96
	2,924	3,291	113
Broiler-Type			
Eggs in Incubators on Jan 1	637,048	650,680	102
Chicks Hatched During Dec ¹	780,094	793,047	102
Chicks Hatched Jan thru Dec ¹	9,079,745	9,330,954	103
Pullets Hatched During Jan for Intended Placements in Hatchery Supply Flocks 7-15 Months Earlier ³	6,978	6,075	87
	60,378	61,750	102

¹ Previous year.

² 2004 includes pullet chicks hatched Jun 2003 through May 2004.

³ 2004 includes pullet chicks hatched Sep 2003 through May 2004.

**Egg-Type Eggs in Incubators: By Region and United States,
January 1, 2004-05**

Geographic Division	2004	2005	2005 as % of 2004
	<i>1,000</i>	<i>1,000</i>	<i>Percent</i>
North Atlantic	4,613	5,000	108
E North Central	6,935	7,623	110
W North Central	7,295	6,935	95
South Atlantic	2,458	4,508	183
South Central	5,248	5,649	108
West	5,106	4,722	92
US	31,655	34,437	109

Regional Listing:

North Atlantic = CT, ME, MA, NH, NJ, NY, PA, RI, VT.

E North Central = IL, IN, MI, OH, WI.

W North Central = IA, KS, MN, MO, NE, ND, SD.

South Atlantic = DE, FL, GA, MD, NC, SC, VA, WV.

South Central = AL, AR, KY, LA, MS, OK, TN, TX.

West = AK, AZ, CA, CO, HI, ID, MT, NM, NV, OR, UT, WA, WY.

**Egg-Type Chicks Hatched: By State and United States,
December 2003-04**

State	December			Jan-Dec		
	2003	2004	2004 as % of 2003	2003	2004	2004 as % of 2003
	<i>1,000</i>	<i>1,000</i>	<i>Percent</i>	<i>1,000</i>	<i>1,000</i>	<i>Percent</i>
AR	702	0	0	9,949	9,543	96
FL	742	1,000	135	8,111	7,897	97
GA	2,123	2,302	108	27,831	28,117	101
IN	4,791	5,317	111	57,801	59,968	104
IA	6,529	6,135	94	71,135	73,382	103
MN	1,112	818	74	14,721	10,507	71
PA	4,623	5,291	114	53,423	62,152	116
Oth Sts ¹	11,948	14,617	122	161,400	170,187	105
US	33,645	37,035	110	416,069	437,497	105

¹ Not published separately to avoid disclosing data for individual operations.

Egg-Type Chicks Hatched: By Month, United States, 2002-04

Month	By Months				Cumulative			
	2002	2003	2004	2004 as % of 2003	2002	2003	2004	2004 as % of 2003
	<i>1,000</i>	<i>1,000</i>	<i>1,000</i>	<i>Percent</i>	<i>1,000</i>	<i>1,000</i>	<i>1,000</i>	<i>Percent</i>
Jan	35,655	33,521	35,350	105	35,655	33,521	35,350	105
Feb	34,473	30,510	32,078	105	70,128	64,031	67,428	105
Mar	36,985	36,775	37,530	102	107,113	100,806	104,958	104
Apr	38,096	37,804	37,514	99	145,209	138,610	142,472	103
May	38,760	37,631	38,631	103	183,969	176,241	181,103	103
Jun	35,144	36,602	38,066	104	219,113	212,843	219,169	103
Jul	35,581	35,566	34,127	96	254,694	248,409	253,296	102
Aug	35,689	33,199	36,024	109	290,383	281,608	289,320	103
Sep	35,742	35,763	36,750	103	326,125	317,371	326,070	103
Oct	32,157	34,812	35,971	103	358,282	352,183	362,041	103
Nov	31,154	30,241	38,421	127	389,436	382,424	400,462	105
Dec	32,113	33,645	37,035	110	421,549	416,069	437,497	105

**Intended Placements: Egg-Type Pullet Chicks for Hatchery Supply
Flocks by Month and Total, United States, 2002-04¹**

Month	Pullet Chicks Hatched			2004 as % of 2003	Cumulative Potential Placements Relative to Current Supply Flocks 7-18 Months Earlier ²		
	2002	2003	2004		2003	2004	2005
	<i>1,000</i>	<i>1,000</i>	<i>1,000</i>	<i>Percent</i>	<i>1,000</i>	<i>1,000</i>	<i>1,000</i>
Jan	228	210	164	78	2,974	3,012	3,194
Feb	247	225	285	127	2,916	2,960	3,207
Mar	237	319	401	126	2,886	2,927	3,332
Apr	295	280	311	111	2,944	2,923	3,264
May	319	289	255	88	2,980	3,047	3,222
Jun	221	309	212	69	2,946	3,139	3,128
Jul	282	230	243	106	2,927	3,198	3,117
Aug	221	188	313	166	2,909	3,152	
Sep	277	273	205	75	2,887	3,212	
Oct	186	310	268	86	2,969	3,294	
Nov	227	319	225	71	2,954	3,325	
Dec	187	246	235	96	2,924	3,291	
Total	2,927	3,198	3,117	97			

¹ Reported by leading breeders. Coverage may not be 100 percent. Includes expected pullet chicks from eggs sold during the preceding month at the rate of 125 pullet chicks per 30 dozen case of eggs.

² For December 2004, includes breeder pullet chicks hatched Jun 2003 through May 2004. The 7-18 months represent the first laying cycle. Molting and additional laying cycles will increase the cumulative potential placements.

**Broiler-Type Eggs in Incubators: By Region
and United States, January 1, 2004-05**

Geographic Division	2004	2005	2005 as % of 2004
	<i>1,000</i>	<i>1,000</i>	<i>Percent</i>
North Atlantic	12,108	12,794	106
E North Central	8,075	8,980	111
W North Central	21,729	22,826	105
South Atlantic	230,389	237,049	103
South Central	340,824	344,674	101
West	23,923	24,357	102
US	637,048	650,680	102

**Broiler-Type Chicks Hatched: By State
and United States, December 2003-04**

State	December			Jan-Dec		
	2003	2004	2004 as % of 2003	2003	2004	2004 as % of 2003
	<i>1,000</i>	<i>1,000</i>	<i>Percent</i>	<i>1,000</i>	<i>1,000</i>	<i>Percent</i>
AL	108,364	108,972	101	1,234,493	1,304,380	106
AR	112,029	112,701	101	1,309,090	1,337,855	102
DE	13,515	14,034	104	156,645	162,136	104
FL	4,926	4,901	99	62,245	58,403	94
GA	119,326	121,845	102	1,368,328	1,423,686	104
KY	25,181	26,158	104	286,945	301,898	105
LA	14,293	14,617	102	164,583	166,082	101
MD	31,998	31,417	98	399,528	373,736	94
MS	70,434	72,519	103	825,602	853,781	103
NC	64,587	65,044	101	772,925	782,056	101
OK	23,245	24,316	105	271,608	280,686	103
PA	13,414	14,060	105	150,755	157,756	105
SC	13,851	16,922	122	192,194	169,663	88
TX	53,322	54,695	103	632,446	650,078	103
VA	24,113	23,882	99	281,380	283,392	101
CA, MO, TN, & WV	63,345	65,744	104	710,653	760,618	107
19 Sts ¹	755,943	771,827	102	8,819,420	9,066,206	103
Oth Sts ²	24,151	21,220	88	260,325	264,748	102
US	780,094	793,047	102	9,079,745	9,330,954	103

¹ States in the weekly hatchery production estimating program.

² Not published separately to avoid disclosing data for individual operations.

Broiler-Type Chicks Hatched: By Month, United States, 2002-04

Month	By Months				Cumulative			
	2002	2003	2004	2004 as % of 2003	2002	2003	2004	2004 as % of 2003
	<i>1,000</i>	<i>1,000</i>	<i>1,000</i>	<i>Percent</i>	<i>1,000</i>	<i>1,000</i>	<i>1,000</i>	<i>Percent</i>
Jan	776,961	759,674	773,970	102	776,961	759,674	773,970	102
Feb	703,323	693,549	727,936	105	1,480,284	1,453,223	1,501,906	103
Mar	791,093	774,354	791,149	102	2,271,377	2,227,577	2,293,055	103
Apr	765,457	760,638	774,452	102	3,036,834	2,988,215	3,067,507	103
May	799,288	792,813	809,725	102	3,836,122	3,781,028	3,877,232	103
Jun	776,343	774,679	785,844	101	4,612,465	4,555,707	4,663,076	102
Jul	781,701	777,838	806,827	104	5,394,166	5,333,545	5,469,903	103
Aug	780,030	784,037	809,820	103	6,174,196	6,117,582	6,279,723	103
Sep	740,388	739,481	769,865	104	6,914,584	6,857,063	7,049,588	103
Oct	720,564	734,961	757,530	103	7,635,148	7,592,024	7,807,118	103
Nov	690,061	707,627	730,789	103	8,325,209	8,299,651	8,537,907	103
Dec	753,883	780,094	793,047	102	9,079,092	9,079,745	9,330,954	103

**Intended Placements: Broiler-Type Pullet Chicks for Hatchery
Supply Flocks by Month and Total, 2002-04 ¹**

Month	Pullet Chicks Hatched			2004 as % of 2003	Cumulative Potential Placements Relative to Current Supply Flocks 7-15 Months Earlier ²		
	2002	2003	2004		2003	2004	2005
	<i>1,000</i>	<i>1,000</i>	<i>1,000</i>	<i>Percent</i>	<i>1,000</i>	<i>1,000</i>	<i>1,000</i>
US Place- ments							
Jan	6,264	6,269	6,811	109	62,473	60,450	61,823
Feb	7,275	6,659	7,340	110	62,371	61,256	62,345
Mar	6,775	7,038	6,815	97	62,559	61,719	62,679
Apr	6,814	6,735	6,402	95	62,658	61,898	63,459
May	7,597	7,323	7,492	102	62,659	61,941	63,235
Jun	7,206	6,748	6,727	100	62,322	62,228	62,903
Jul	6,602	7,071	6,834	97	62,022	62,168	62,163
Aug	7,449	7,401	7,280	98	61,477	62,244	
Sep	6,676	6,654	7,758	117	60,539	62,261	
Oct	6,265	6,312	6,587	104	60,371	62,328	
Nov	6,938	6,946	7,008	101	60,504	61,659	
Dec	6,475	6,978	6,075	87	60,378	61,750	
Annual Total	82,336	82,134	83,129	101			
Total Place- ments ³							
Jan	7,415	7,388	7,812	106			
Feb	8,491	8,094	8,251	102			
Mar	7,997	8,549	7,801	91			
Apr	8,119	8,062	7,288	90			
May	8,982	8,604	8,596	100			
Jun	8,802	8,341	8,100	97			
Jul	8,083	8,555	8,149	95			
Aug	8,913	8,756	8,416	96			
Sep	8,002	8,338	9,184	110			
Oct	7,438	7,695	7,766	101			
Nov	8,202	8,246	8,291	101			
Dec	8,016	8,185	7,435	91			
Annual Total	98,460	98,813	97,089	98			

¹ Reported by leading breeders. Coverage may not be 100 percent. Includes expected pullet chicks from eggs sold during the preceding month at the rate of 125 pullet chicks per 30 dozen case of eggs.

² For Dec 2004, includes breeder pullet chicks hatched Sep 2003 through May 2004.

³ U.S. production of intended placements worldwide.

Procedures and Reliability

Data Sources: Primary data for the "**Chickens and Eggs**" report are from weekly and/or monthly questionnaires sent to producers. An attempt is made to collect information for layer and egg estimates from each known contractor and independent producer who has over 30,000 table egg layers. Coverage for operations with less than 30,000 table egg layers are estimated each month based on data reported in December. Approximately 900 contractors, independent egg producers, and started pullet operations are contacted each month. All known hatcheries, approximately 330, are contacted for information on a weekly and/or monthly basis.

Revisions: The previous month's estimates are subject to revision if late reports or corrected data indicates a different level. Additionally, revisions needed after the monthly report will be made at the end of the marketing year and published in the annual summaries of "**Chickens and Eggs Summary**" and "**Hatchery Production**".

Procedures and Reliability: Operations are mailed a questionnaire and given adequate time to respond by mail. Those that do not respond are phoned. Great care is exercised to ensure that all operations are accounted for during each survey period. However, there are usually missing reports that must be accounted for in the estimates.

Sound statistical methodology is employed to derive estimates from the reported data. All data are checked for unusual values. All operations' data are compared to their own past operating profiles and also to trends from other operations. Data for missing operations are estimated based on similar operations or historical data. Survey data are subject to non-sampling errors such as omissions and mistakes in reporting and in processing. While these errors cannot be measured directly, they are minimized by reviewing all data for consistency and reasonableness.

Egg-type chicks hatched are comprised of all chicks of egg-type domesticated breeds including males and chicks destined for hatchery supply flocks and research purposes. The relationship of chicks hatched to chicken inventory and poultry marketings is carefully monitored. The disposition of egg-type chicks hatched prior to placement into the laying flock can vary significantly, which can make comparisons to changes in layer inventory inconsistent over time.

Intended placement data reported by leading breeders include pullet chicks expected from eggs sold the preceding month. The breeders in this report account for a large percentage of replacement pullets for hatchery supply flocks. Production of replacement pullets by these breeders indicates the number of pullets available to hatchery supply flocks several months before the pullets will actually move into the flocks. "Hatchery Supply Flocks" include all generations of layers which could lay eggs to supply a hatchery. This includes the generations of parents, grandparents, great-grandparents, pedigree, etc. Also included are research flocks, vaccine flocks, and specific pathogen-free flocks. The broiler cumulative potential placements are a moving total of the intended placements 7-15 months earlier. The egg-type cumulative potential placements of 7-18 months represent the first laying cycle. Molting and additional laying cycles will increase the cumulative potential placements of egg-type hatching flocks.

ACCESS TO REPORTS!!

For your convenience, there are several ways to obtain NASS reports, data products, and services:

INTERNET ACCESS

All NASS reports are available free of charge on the worldwide Internet. For access, connect to the Internet and go to the NASS Home Page at: www.usda.gov/nass/. Select "Today's Reports" or Publications and then Reports Calendar or Publications and then Search, by Title or Subject.

E-MAIL SUBSCRIPTION

All NASS reports are available by subscription free of charge direct to your e-mail address. Starting with the NASS Home Page at www.usda.gov/nass/, click on **Publications**, then click on the **Subscribe by E-mail** button which takes you to the page describing e-mail delivery of reports. Finally, click on **Go to the Subscription Page** and follow the instructions.

PRINTED REPORTS OR DATA PRODUCTS

CALL OUR TOLL-FREE ORDER DESK: 800-999-6779 (U.S. and Canada)
Other areas, please call 703-605-6220 FAX: 703-605-6900
(Visa, MasterCard, check, or money order acceptable for payment.)

ASSISTANCE

For **assistance** with general agricultural statistics or further information about NASS or its products or services, contact the **Agricultural Statistics Hotline** at **800-727-9540**, 7:30 a.m. to 4:00 p.m. ET, or e-mail: nass@nass.usda.gov.

The United States Department of Agriculture (USDA) prohibits discrimination in all its programs on the basis of race, color, national origin, gender, religion, age, disability, political beliefs, sexual orientation, and marital or family status. (Not all prohibited bases apply to all programs.) Persons with disabilities who require alternative means for communication of program information (braille, large print, audiotape, etc.) should contact the USDA's TARGET Center at 202-720-2600 (voice and TDD).

To file a complaint of discrimination, write USDA, Director, Office of Civil Rights, Room 326-W, Whitten Building, 1400 Independence Avenue, SW, Washington, D.C., 20250-9410, or call 202-720-5964 (voice or TDD). USDA is an equal opportunity provider and employer.

Science, Markets, Policy—What's Ahead?

Agricultural Outlook Forum 2005



**Arlington, Virginia
Feb. 24-25, 2005**

Count on USDA's Outlook Forum 2005 for the latest farm and commodity prospects and insight on news shaping the outlook for agriculture.

Outlook sessions will feature USDA's first 2005 forecasts for planting, production, trade and prices and speakers on market developments.

The program will feature the science-agriculture connection. Today as never before, science is crossing paths with farming, farm policy and the marketplace. Topics include managing risks from BSE and Avian Influenza; prospects for energy prices, ethanol and co-products; early debate over the next Farm Bill; new dietary guidelines; the future of the North American marketplace; WTO talks and the bio-safety protocol.

Attendees will receive new USDA long-term commodity projections to 2014. USDA agencies will demonstrate new e-government tools for better service.

Networking opportunities abound at this popular event. Register online today. For program updates, send your name and e-mail address to agforum@oce.usda.gov.

www.usda.gov/oce/forum

agforum@oce.usda.gov