

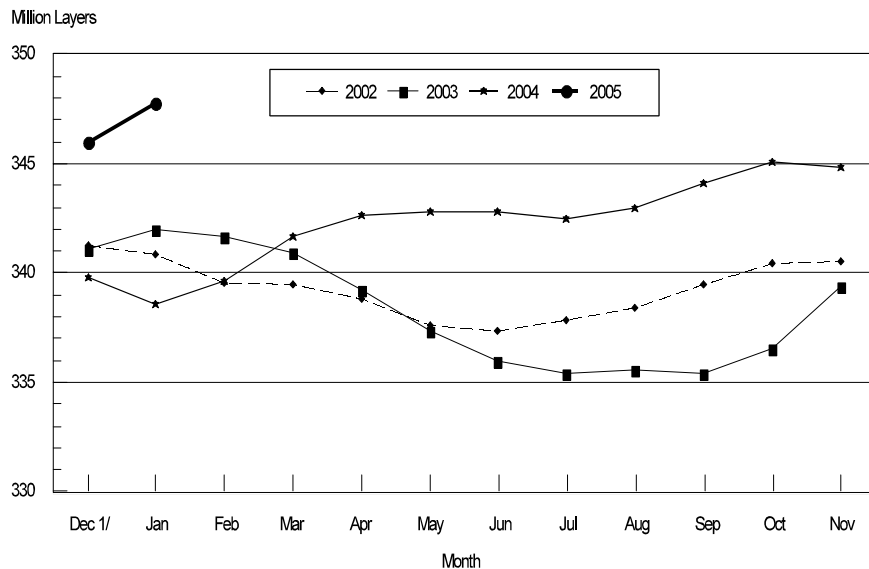
Released February 24, 2005, by the National Agricultural Statistics Service (NASS), Agricultural Statistics Board, U.S. Department of Agriculture. For information on *Chickens and Eggs* call Sharyn Lavender at (202) 720-3244, for "Hatch" call Jody Roberts at (202) 690-8632, office hours 7:30 a.m. to 4:00 p.m. ET.

January Egg Production Up 3 Percent

U.S. egg production totaled 7.61 billion during January 2005, up 3 percent from last year. Production included 6.52 billion table eggs, and 1.09 billion hatching eggs, of which 1.03 billion were broiler-type and 64 million were egg-type. The total number of layers during January 2005 averaged 348 million, up 3 percent from a year earlier. January egg production per 100 layers was 2,188 eggs, up slightly from January 2004.

All layers in the U.S. on February 1, 2005, totaled 348 million, up 3 percent from a year ago. The 348 million layers consisted of 289 million layers producing table or market type eggs, 56.6 million layers producing broiler-type hatching eggs, and 2.68 million layers producing egg-type hatching eggs. Rate of lay per day on February 1, 2005, averaged 69.8 eggs per 100 layers, up slightly from a year ago.

Average Number of All Layers
United States, 2002 - 2005



1/Previous Year

Egg-Type Chicks Hatched Up 4 Percent

Egg-type chicks hatched during January totaled 36.8 million, up 4 percent from January 2004. Eggs in incubators totaled 33.3 million on February 1, 2005, up 9 percent from a year ago.

Domestic placements of egg-type pullet chicks for future hatchery supply flocks by leading breeders totaled 157,000 during January 2005, down 4 percent from January 2004.

Broiler Hatch Up 3 Percent

The January 2005 hatch of broiler-type chicks, at 796 million, was up 3 percent from January of the previous year. There were 654 million eggs in incubators on February 1, 2005, up 3 percent from a year earlier.

Leading breeders placed 6.29 million broiler-type pullet chicks for future domestic hatchery supply flocks during January 2005, down 8 percent from January 2004.

**All Layers: Average Number on Hand During the Month,
United States, 2002-05**

Month	2002	2003	2004	2005
	<i>1,000 Layers</i>	<i>1,000 Layers</i>	<i>1,000 Layers</i>	<i>1,000 Layers</i>
Dec ¹	341,243	341,131	339,789	345,960
Jan	340,885	341,996	338,550	347,739
Feb	339,529	341,661	339,647	
Mar	339,434	340,971	341,700	
Apr	338,809	339,268	342,612	
May	337,566	337,356	342,786	
Jun	337,339	335,979	342,835	
Jul	337,849	335,417	342,479	
Aug	338,397	335,565	342,983	
Sep	339,511	335,426	344,118	
Oct	340,461	336,557	345,056	
Nov	340,490	339,387	344,797	

¹ December preceding year.

**Eggs: Production During the Month by Type,
United States, 2004-05 ¹**

Month	Total Eggs		Table Eggs		Hatching Eggs	
	2004	2005	2004	2005	2004	2005
	<i>Million Eggs</i>	<i>Million Eggs</i>	<i>Million Eggs</i>	<i>Million Eggs</i>	<i>Million Eggs</i>	<i>Million Eggs</i>
Dec ²	7,554	7,728	6,492	6,643	1,063	1,085
Jan	7,386	7,607	6,323	6,518	1,063	1,090
Feb	6,901		5,895		1,007	
Mar	7,547		6,453		1,095	
Apr	7,358		6,284		1,074	
May	7,513		6,393		1,120	
Jun	7,289		6,209		1,080	
Jul	7,557		6,455		1,102	
Aug	7,538		6,443		1,095	
Sep	7,344		6,282		1,063	
Oct	7,659		6,569		1,090	
Nov	7,482		6,435		1,047	
During Year	89,131		76,236		12,896	

¹ Totals may not add due to rounding.

² December preceding year.

**Layers and Eggs: Layers on Hand and Eggs Produced by Type,
and Forced Molt, United States, December-January 2003-05**

Item	Unit	2003	2004	2004 as % of 2003
Layers During Dec	1,000			
All Layers		339,789	345,960	102
Table Egg Type		281,861	287,473	102
Hatching Egg Type		57,928	58,487	101
Broiler-Type Hatching		55,434	55,864	101
Egg-Type Hatching		2,494	2,623	105
Eggs per 100 Layers During Dec	Number			
All Layers		2,223	2,234	100
Table Egg Type		2,303	2,311	100
Hatching Egg Type		1,835	1,855	101
Broiler-Type Hatching		1,808	1,829	101
Egg-Type Hatching		2,446	2,402	98
Eggs Produced During Dec	Million			
All Layers		7,554	7,728	102
Table Egg Type		6,492	6,643	102
Hatching Egg Type		1,063	1,085	102
Broiler-Type Hatching		1,002	1,022	102
Egg-Type Hatching		61	63	103
		2004	2005	2005 as % of 2004
Layers on Jan 1	1,000			
All Layers		338,272	347,603	103
Table Egg Type		280,386	288,656	103
Hatching Egg Type		57,886	58,947	102
Broiler-Type Hatching		55,437	56,232	101
Egg-Type Hatching		2,449	2,715	111
Eggs per 100 Layers on Jan 1	Number			
All Layers		71.0	71.3	100
Table Egg Type		73.4	73.6	100
Hatching Egg Type		59.2	59.7	101
Broiler-Type Hatching		58.3	58.8	101
Egg-Type Hatching		79.7	76.7	96
Forced Molt Layers on Jan 1	Percent			
Percent Being Molted		3.9	4.1	105
Percent with Molt Completed		22.8	23.2	102
Layers Sold for Slaughter During Dec	1,000	16,420	14,272	87
Layers Rendered, Died, Destroyed, Composted or Disappeared For Any Reason During Dec	1,000	7,384	5,781	78
Pullets on Jan 1	1,000	100,557	101,343	101
Pullets Added During Dec ¹	1,000	23,673	24,778	105

¹ Pullet chicks less than 3 days old added to pullet flocks.

**Layers and Eggs: Layers on Hand and Eggs Produced by Type,
and Forced Molt, United States, January-February 2004-05**

Item	Unit	2004	2005	2005 as % of 2004
Layers During Jan	1,000			
All Layers		338,550	347,739	103
Table Egg Type		280,133	288,602	103
Hatching Egg Type		58,417	59,137	101
Broiler-Type Hatching		55,964	56,433	101
Egg-Type Hatching		2,453	2,704	110
Eggs per 100 Layers During Jan	Number			
All Layers		2,182	2,188	100
Table Egg Type		2,257	2,258	100
Hatching Egg Type		1,820	1,843	101
Broiler-Type Hatching		1,792	1,818	101
Egg-Type Hatching		2,446	2,367	97
Eggs Produced During Jan	Million			
All Layers		7,386	7,607	103
Table Egg Type		6,323	6,518	103
Hatching Egg Type		1,063	1,090	103
Broiler-Type Hatching		1,003	1,026	102
Egg-Type Hatching		60	64	107
Layers on Feb 1	1,000			
All Layers		338,774	347,832	103
Table Egg Type		279,854	288,528	103
Hatching Egg Type		58,920	59,304	101
Broiler-Type Hatching		56,474	56,627	100
Egg-Type Hatching		2,446	2,677	109
Eggs per 100 Layers on Feb 1	Number			
All Layers		69.7	69.8	100
Table Egg Type		72.1	72.0	100
Hatching Egg Type		58.0	59.2	102
Broiler-Type Hatching		57.2	58.4	102
Egg-Type Hatching		76.8	78.0	102
Forced Molt Layers, Feb 1	Percent			
Percent Being Molted		4.9	4.6	94
Percent with Molt Completed		22.7	21.8	96
Layers Sold for Slaughter During Jan	1,000	15,104	14,862	98
Layers Rendered, Died, Destroyed, Composted or Disappeared For Any Reason During Jan	1,000	8,098	6,635	82
Pullets on Feb 1	1,000	97,685	100,520	103
Pullets Added During Jan ¹	1,000	23,300	24,132	104

¹ Pullet chicks less than 3 days old added to pullet flocks.

**Layers and Eggs: Layers on Hand and Eggs Produced by State
and United States, During December 2003-04**

State	Table Egg Layers in Flocks 30,000 and Above		All Layers ¹		Eggs per 100 for All Layers ¹	
	2003	2004	2003	2004	2003	2004
	<i>1,000</i>	<i>1,000</i>	<i>1,000</i>	<i>1,000</i>	<i>Number</i>	<i>Number</i>
AL	2,067	1,850	9,418	9,255	1,932	1,945
AR	4,813	4,794	15,472	15,291	1,926	1,962
CA	20,240	20,037	20,769	20,524	2,244	2,290
CO	3,747	3,442	4,223	3,986	2,415	2,333
CT	2,910	2,892	2,962	2,948	2,465	2,374
FL	10,470	10,216	10,989	10,677	2,321	2,313
GA	11,531	10,991	20,672	20,123	2,095	2,172
HI	447	473	482	512	2,012	1,973
IL	3,593	4,190	3,805	4,417	2,181	2,196
IN	22,686	22,756	23,427	23,501	2,275	2,281
IA	40,250	47,238	40,931	47,979	2,294	2,209
ME	4,090	2,625	4,135	2,687	2,322	2,345
MD	2,912	3,094	3,033	3,226	2,407	2,418
MI	7,038	7,231	7,295	7,482	2,262	2,326
MN	10,728	10,555	11,309	11,103	2,237	2,252
MS	1,887	1,706	6,751	6,959	1,955	1,940
MO	5,300	6,073	6,575	7,285	2,236	2,265
NE	11,668	11,925	11,743	12,000	2,282	2,267
NY	3,379	3,821	3,764	4,147	2,471	2,460
NC	3,416	3,370	10,812	10,934	2,007	1,994
OH	27,837	27,371	28,276	27,839	2,309	2,324
OK	1,925	1,898	4,111	4,046	1,922	1,903
OR	2,743	2,672	2,911	2,861	2,370	2,342
PA	21,743	22,174	23,504	23,920	2,314	2,379
SC	4,124	4,263	5,343	5,332	2,265	2,307
SD	3,147	3,079	3,347	3,179	2,181	2,328
TX	14,185	13,841	18,473	18,257	2,236	2,295
VA	1,320	1,313	3,205	3,185	1,934	2,135
WA	4,879	4,832	4,943	4,897	2,266	2,348
WI	3,762	4,675	4,284	5,167	2,381	2,245
Oth Sts ²	16,955	16,119	22,825	22,241	2,226	2,230
US	275,792	281,516	339,789	345,960	2,223	2,234

¹ Includes all layers and eggs produced in both table egg and hatching egg flocks regardless of size.

² Estimates for individual States are not available.

**Layers and Eggs: Layers on Hand and Eggs Produced by State
and United States, During January 2004-05**

State	Table Egg Layers in Flocks 30,000 and Above		All Layers ¹		Eggs per 100 for All Layers ¹	
	2004	2005	2004	2005	2004	2005
	<i>1,000</i>	<i>1,000</i>	<i>1,000</i>	<i>1,000</i>	<i>Number</i>	<i>Number</i>
AL	2,013	1,872	9,367	9,255	1,890	1,945
AR	4,681	4,582	15,366	15,138	1,900	1,936
CA	19,966	20,020	20,442	20,512	2,172	2,238
CO	3,613	3,400	4,086	3,935	2,349	2,338
CT	2,904	2,889	2,957	2,947	2,435	2,443
FL	10,530	9,861	11,039	10,325	2,292	2,286
GA	11,403	11,020	20,674	20,365	2,075	2,121
HI	455	474	492	511	1,972	2,035
IL	3,549	4,302	3,763	4,527	2,046	1,988
IN	22,464	22,726	23,195	23,463	2,250	2,212
IA	39,913	48,999	40,565	49,771	2,246	2,176
ME	4,024	2,169	4,069	2,226	2,261	1,977
MD	3,017	3,081	3,117	3,184	2,310	2,324
MI	7,185	7,131	7,447	7,389	2,175	2,206
MN	10,498	10,398	11,093	10,946	2,254	2,275
MS	1,868	1,678	6,898	7,144	1,943	1,876
MO	5,550	6,110	6,841	7,362	2,295	2,200
NE	11,691	11,969	11,766	12,044	2,269	2,292
NY	3,546	3,777	3,929	4,106	2,469	2,435
NC	3,399	3,373	10,839	10,954	1,947	1,981
OH	26,831	27,531	27,231	28,017	2,218	2,252
OK	1,959	1,875	4,145	4,057	1,954	1,947
OR	2,813	2,746	2,979	2,924	2,249	2,291
PA	21,882	22,733	23,643	24,484	2,301	2,336
SC	4,071	4,221	5,249	5,288	2,191	2,307
SD	3,140	3,075	3,340	3,175	2,216	2,331
TX	14,123	13,541	18,543	18,064	2,206	2,176
VA	1,315	1,241	3,253	3,124	1,937	2,049
WA	4,861	4,917	4,930	4,988	2,170	2,265
WI	3,844	4,625	4,368	5,122	2,266	2,245
Oth Sts ²	16,940	16,309	22,924	22,392	2,172	2,197
US	274,048	282,645	338,550	347,739	2,182	2,188

¹ Includes all layers and eggs produced in both table egg and hatching egg flocks regardless of size.

² Estimates for individual States are not available.

**Egg Production: By Type, State, and United States,
December 2003-04**

State	Total Production		Table Eggs ¹		Hatching Eggs ¹	
	2003	2004	2003	2004	2003	2004
	<i>Million Eggs</i>	<i>Million Eggs</i>	<i>Million Eggs</i>	<i>Million Eggs</i>	<i>Million Eggs</i>	<i>Million Eggs</i>
AL	182	180	50	43	132	137
AR	298	300	113	116	185	184
CA	466	470				
CO	102	93				
CT	73	70				
FL	255	247	244	240	11	7
GA	433	437	263	264	170	173
HI	9.7	10.1	9.7	10.1	0	0
IL	83	97	80	94	3	3
IN	533	536	521	523	12	13
IA	939	1,060				
ME	96	63				
MD	73	78	71	76	2	2
MI	165	174				
MN	253	250	244	242	9	8
MS	132	135	42	40	90	95
MO	147	165				
NE	268	272	268	272	0	0
NY	93	102				
NC	217	218	84	82	133	136
OH	653	647				
OK	79	77	45	44	34	33
OR	69	67	67	65	2	2
PA	544	569	528	552	16	17
SC	121	123	101	104	20	19
SD	73	74	73	74	0	0
TX	413	419				
VA	62	68	28	34	34	34
WA	112	115				
WI	102	116				
Oth Sts ²	508	496	424	405	85	92
US	7,554	7,728	6,492	6,643	1,063	1,085

¹ Data by type of flock not shown for some States to avoid disclosing individual operations.

² Estimates for individual States are not available.

**Egg Production: By Type, State, and United States,
January 2004-05**

State	Total Production		Table Eggs ¹		Hatching Eggs ¹	
	2004	2005	2004	2005	2004	2005
	<i>Million Eggs</i>	<i>Million Eggs</i>	<i>Million Eggs</i>	<i>Million Eggs</i>	<i>Million Eggs</i>	<i>Million Eggs</i>
AL	177	180	47	43	130	137
AR	292	293	106	107	186	186
CA	444	459				
CO	96	92				
CT	72	72				
FL	253	236	243	228	10	8
GA	429	432	257	254	172	178
HI	9.7	10.4	9.7	10.4	0	0
IL	77	90	74	87	3	3
IN	522	519	510	506	12	13
IA	911	1,083				
ME	92	44				
MD	72	74	71	73	1	1
MI	162	163				
MN	250	249	241	241	9	8
MS	134	134	42	38	92	96
MO	157	162				
NE	267	276	267	276	0	0
NY	97	100				
NC	211	217	85	80	126	137
OH	604	631				
OK	81	79	46	44	35	35
OR	67	67	65	65	2	2
PA	544	572	528	555	16	17
SC	115	122	95	103	20	19
SD	74	74	74	74	0	0
TX	409	393				
VA	63	64	29	30	34	34
WA	107	113				
WI	99	115				
Oth Sts ²	498	492	410	400	88	93
US	7,386	7,607	6,323	6,518	1,063	1,090

¹ Data by type of flock not shown for some States to avoid disclosing individual operations.

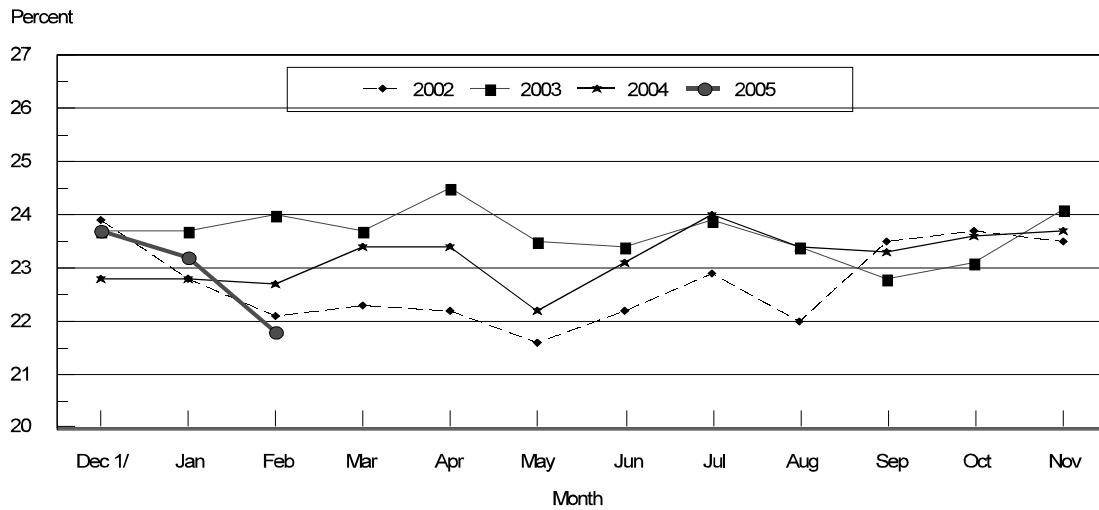
² Estimates for individual States are not available.

**Forced Molt: Percent of All Layers by Month,
United States, 2004-05 ¹**

Month	Percent Being Molted		Percent with Molt Completed	
	2004	2005	2004	2005
	<i>Percent</i>	<i>Percent</i>	<i>Percent</i>	<i>Percent</i>
Jan	3.9	4.1	22.8	23.2
Feb	4.9	4.6	22.7	21.8
Mar	4.6		23.4	
Apr	2.6		23.4	
May	4.7		22.2	
Jun	4.8		23.1	
Jul	4.6		24.0	
Aug	4.5		23.4	
Sep	4.5		23.3	
Oct	3.9		23.6	
Nov	4.2		23.7	
Dec	2.6		23.7	

¹ As of first of month.

**All Layers: United States
Percent Molt Completed, 2002 - 2005
First of Month**



^{1/} Previous year

**Forced Molt: Percent of All Layers by State
and United States, February 2004-05¹**

State	Percent Being Molted		Percent with Molt Completed	
	2004	2005	2004	2005
	<i>Percent</i>	<i>Percent</i>	<i>Percent</i>	<i>Percent</i>
AL	1.0	1.0	4.5	5.0
AR	2.5	3.5	9.0	8.5
CA	5.5	6.0	29.0	34.5
CO	6.0	4.0	19.5	27.0
CT	0.0	0.0	13.0	10.2
FL	3.5	7.5	28.5	19.5
GA	5.5	2.5	16.5	17.0
HI	7.0	5.5	47.5	48.0
IL	6.5	5.5	33.5	30.0
IN	5.0	5.5	32.5	30.5
IA	7.0	4.0	33.5	29.0
ME	0.0	0.0	0.0	0.0
MD	9.5	2.5	14.0	32.5
MI	10.0	9.0	24.5	26.5
MN	4.0	2.5	26.0	26.5
MS	3.0	2.5	9.5	9.0
MO	3.5	5.5	16.0	16.0
NE	5.0	9.0	20.5	21.0
NY	1.5	1.5	3.0	5.0
NC	0.0	1.5	9.5	6.5
OH	7.5	7.0	23.0	23.0
OK	0.0	0.0	5.0	5.0
OR	6.0	6.5	38.0	24.0
PA	3.0	5.0	20.0	14.5
SC	3.5	2.5	25.0	27.0
SD	9.0	10.0	25.0	28.0
TX	3.0	4.0	23.0	16.5
VA	2.5	3.5	10.5	11.2
WA	12.5	8.0	41.0	34.0
WI	8.0	3.5	27.5	28.5
Oth Sts ²	5.6	5.0	26.2	26.5
US	4.9	4.6	22.7	21.8

¹ As of first of month.

² Estimates for individual States are not available.

**Hatchery Production: Eggs in Incubators, Chicks Hatched,
and Placements by Type, United States, January-February 2004-05**

Item	2004	2005	2005 as % of 2004
	<i>1,000</i>	<i>1,000</i>	<i>Percent</i>
Egg-Type			
Eggs in Incubators on Feb 1	30,520	33,277	109
Chicks Hatched During Jan	35,350	36,761	104
Pullets Hatched During Jan for Intended Placements in Hatchery Supply Flocks 7-18 Month Earlier ¹	164 3,012	157 3,194	96 106
Broiler-Type			
Eggs in Incubators on Feb 1	636,126	654,044	103
Chicks Hatched During Jan	773,970	796,026	103
Pullets Hatched During Jan for Intended Placements in Hatchery Supply Flocks 7-15 Months Earlier ²	6,811 60,450	6,289 61,823	92 102

¹ 2005 includes pullet chicks hatched Jul 2003 through Jun 2004.

² 2005 includes pullet chicks hatched Oct 2003 through Jun 2004.

**Egg-Type Eggs in Incubators: By Region and United States,
February 1, 2004-05**

Region	2004	2005	2005 as % of
	<i>1,000</i>	<i>1,000</i>	<i>Percent</i>
North Atlantic	5,610	5,242	93
E North Central	5,961	6,978	117
W North Central	6,490	4,793	74
South Atlantic	2,559	4,644	181
South Central	4,683	6,504	139
West	5,217	5,116	98
US	30,520	33,277	109

Regions:

North Atlantic = CT, ME, MA, NH, NJ, NY, PA, RI, VT.

E North Central = IL, IN, MI, OH, WI.

W North Central = IA, KS, MN, MO, NE, ND, SD.

South Atlantic = DE, FL, GA, MD, NC, SC, VA, WV.

South Central = AL, AR, KY, LA, MS, OK, TN, TX.

West = AK, AZ, CA, CO, HI, ID, MT, NM, NV, OR, UT, WA, WY.

**Egg-Type Chicks Hatched: By State and United States,
January 2004-05**

State	January			Jan-Jan		
	2004	2005	2005 as % of 2004	2004	2005	2005 as % of 2004
	<i>1,000</i>	<i>1,000</i>	<i>Percent</i>	<i>1,000</i>	<i>1,000</i>	<i>Percent</i>
FL	709	908	128	709	908	128
GA	2,519	2,327	92	2,519	2,327	92
IN	5,096	5,538	109	5,096	5,538	109
IA	6,018	5,832	97	6,018	5,832	97
MN	1,110	818	74	1,110	818	74
PA	4,935	5,818	118	4,935	5,818	118
Oth Sts ¹	14,963	15,520	104	14,963	15,520	104
US	35,350	36,761	104	35,350	36,761	104

¹ Not published separately to avoid disclosing data for individual operations.

Egg-Type Chicks Hatched: By Month, United States, 2003-05

Month	By Months				Cumulative			
	2003	2004	2005	2005 as % of 2004	2003	2004	2005	2005 as % of 2004
	<i>1,000</i>	<i>1,000</i>	<i>1,000</i>	<i>Percent</i>	<i>1,000</i>	<i>1,000</i>	<i>1,000</i>	<i>Percent</i>
Jan	33,521	35,350	36,761	104	33,521	35,350	36,761	104
Feb	30,510	32,078			64,031	67,428		
Mar	36,775	37,530			100,806	104,958		
Apr	37,804	37,514			138,610	142,472		
May	37,631	38,631			176,241	181,103		
Jun	36,602	38,066			212,843	219,169		
Jul	35,566	34,127			248,409	253,296		
Aug	33,199	36,024			281,608	289,320		
Sep	35,763	36,750			317,371	326,070		
Oct	34,812	35,971			352,183	362,041		
Nov	30,241	38,421			382,424	400,462		
Dec	33,645	37,035			416,069	437,497		

**Intended Placements: Egg-Type Pullet Chicks for Hatchery Supply
Flocks by Month and Total, United States, 2003-05¹**

Month	Pullet Chicks Hatched			2005 as % of 2004	Cumulative Potential Placements Relative to Current Supply Flocks 7-18 Months Earlier ²		
	2003	2004	2005		2003	2004	2005
	<i>1,000</i>	<i>1,000</i>	<i>1,000</i>	<i>Percent</i>	<i>1,000</i>	<i>1,000</i>	<i>1,000</i>
Jan	210	164	157	96	2,974	3,012	3,194
Feb	225	285			2,916	2,960	3,207
Mar	319	401			2,886	2,927	3,332
Apr	280	311			2,944	2,923	3,264
May	289	255			2,980	3,047	3,222
Jun	309	212			2,946	3,139	3,128
Jul	230	243			2,927	3,198	3,117
Aug	188	313			2,909	3,152	3,110
Sep	273	205			2,887	3,212	
Oct	310	268			2,969	3,294	
Nov	319	225			2,954	3,325	
Dec	246	235			2,924	3,291	
Total	3,198	3,117					

¹ Reported by leading breeders. Coverage may not be 100 percent. Includes expected pullet chicks from eggs sold during the preceding month at the rate of 125 pullet chicks per 30 dozen case of eggs.

² For January 2005, includes breeder pullet chicks hatched Jul 2003 through Jun 2004. The 7-18 months represent the first laying cycle. Molting and additional laying cycles will increase the cumulative potential placements.

**Broiler-Type Eggs in Incubators: By Region
and United States, February 1, 2004-05**

Geographic Division	2004	2005	2005 as % of 2004
	<i>1,000</i>	<i>1,000</i>	<i>Percent</i>
North Atlantic	12,093	11,898	98
E North Central	8,075	8,699	108
W North Central	21,614	23,200	107
South Atlantic	230,351	236,272	103
South Central	339,080	348,833	103
West	24,913	25,142	101
US	636,126	654,044	103

**Broiler-Type Chicks Hatched: By State
and United States, January 2004-05**

State	January			Jan-Jan		
	2004	2005	2005 as % of 2004	2004	2005	2005 as % of 2004
	<i>1,000</i>	<i>1,000</i>	<i>Percent</i>	<i>1,000</i>	<i>1,000</i>	<i>Percent</i>
AL	109,670	109,263	100	109,670	109,263	100
AR	113,114	114,494	101	113,114	114,494	101
DE	13,544	14,702	109	13,544	14,702	109
FL	4,940	4,854	98	4,940	4,854	98
GA	119,894	123,719	103	119,894	123,719	103
KY	24,876	25,499	103	24,876	25,499	103
LA	13,411	14,661	109	13,411	14,661	109
MD	32,079	31,788	99	32,079	31,788	99
MS	71,206	72,503	102	71,206	72,503	102
NC	64,309	66,311	103	64,309	66,311	103
OK	22,527	23,595	105	22,527	23,595	105
PA	12,642	14,168	112	12,642	14,168	112
SC	13,191	17,293	131	13,191	17,293	131
TX	52,895	54,510	103	52,895	54,510	103
VA	23,179	23,587	102	23,179	23,587	102
CA, MO, TN, & WV	61,268	65,033	106	61,268	65,033	106
19 Sts ¹	752,745	775,980	103	752,745	775,980	103
Oth Sts ²	21,225	20,046	94	21,225	20,046	94
US	773,970	796,026	103	773,970	796,026	103

¹ States in the weekly hatchery production estimating program.

² Not published separately to avoid disclosing data for individual operations.

Broiler-Type Chicks Hatched: By Month, United States, 2003-05

Month	By Months				Cumulative			
	2003	2004	2005	2005 as % of 2004	2003	2004	2005	2005 as % of 2004
	<i>1,000</i>	<i>1,000</i>	<i>1,000</i>	<i>Percent</i>	<i>1,000</i>	<i>1,000</i>	<i>1,000</i>	<i>Percent</i>
Jan	759,674	773,970	796,026	103	759,674	773,970	796,026	103
Feb	693,549	727,936			1,453,223	1,501,906		
Mar	774,354	791,149			2,227,577	2,293,055		
Apr	760,638	774,452			2,988,215	3,067,507		
May	792,813	809,725			3,781,028	3,877,232		
Jun	774,679	785,844			4,555,707	4,663,076		
Jul	777,838	806,827			5,333,545	5,469,903		
Aug	784,037	809,820			6,117,582	6,279,723		
Sep	739,481	769,865			6,857,063	7,049,588		
Oct	734,961	757,530			7,592,024	7,807,118		
Nov	707,627	730,789			8,299,651	8,537,907		
Dec	780,094	793,047			9,079,745	9,330,954		

**Intended Placements: Broiler-Type Pullet Chicks for Hatchery
Supply Flocks by Month and Total, 2003-05 ¹**

Month	Pullet Chicks Hatched			2005 as % of 2004	Cumulative Potential Placements Relative to Current Supply Flocks 7-15 Months Earlier ²		
	2003	2004	2005		2003	2004	2005
	<i>1,000</i>	<i>1,000</i>	<i>1,000</i>	<i>Percent</i>	<i>1,000</i>	<i>1,000</i>	<i>1,000</i>
US Place- ments							
Jan	6,269	6,811	6,289	92	62,473	60,450	61,823
Feb	6,659	7,340			62,371	61,256	62,345
Mar	7,038	6,815			62,559	61,719	62,679
Apr	6,735	6,402			62,658	61,898	63,459
May	7,323	7,492			62,659	61,941	63,235
Jun	6,748	6,727			62,322	62,228	62,903
Jul	7,071	6,834			62,022	62,168	62,163
Aug	7,401	7,280			61,477	62,244	62,050
Sep	6,654	7,758			60,539	62,261	
Oct	6,312	6,587			60,371	62,328	
Nov	6,946	7,008			60,504	61,659	
Dec	6,978	6,075			60,378	61,750	
Annual Total	82,134	83,129					
Total Place- ments ³							
Jan	7,388	7,812	7,684	98			
Feb	8,094	8,251					
Mar	8,549	7,801					
Apr	8,062	7,288					
May	8,604	8,596					
Jun	8,341	8,100					
Jul	8,555	8,149					
Aug	8,756	8,416					
Sep	8,338	9,184					
Oct	7,695	7,766					
Nov	8,246	8,291					
Dec	8,185	7,435					
Annual Total	98,813	97,089					

¹ Reported by leading breeders. Coverage may not be 100 percent. Includes expected pullet chicks from eggs sold during the preceding month at the rate of 125 pullet chicks per 30 dozen case of eggs.

² For Jan 2005, includes breeder pullet chicks hatched Oct 2003 through Jun 2004.

³ U.S. production of intended placements worldwide.

Procedures and Reliability

Data Sources: Primary data for the "**Chickens and Eggs**" report are from weekly and/or monthly questionnaires sent to producers. An attempt is made to collect information for layer and egg estimates from each known contractor and independent producer who has over 30,000 table egg layers. Coverage for operations with less than 30,000 table egg layers are estimated each month based on data reported in December. Approximately 900 contractors, independent egg producers, and started pullet operations are contacted each month. All known hatcheries, approximately 330, are contacted for information on a weekly and/or monthly basis.

Revisions: The previous month's estimates are subject to revision if late reports or corrected data indicates a different level. Additionally, revisions needed after the monthly report will be made at the end of the marketing year and published in the annual summaries of "**Chickens and Eggs Summary**" and "**Hatchery Production**".

Procedures and Reliability: Operations are mailed a questionnaire and given adequate time to respond by mail. Those that do not respond are phoned. Great care is exercised to ensure that all operations are accounted for during each survey period. However, there are usually missing reports that must be accounted for in the estimates.

Sound statistical methodology is employed to derive estimates from the reported data. All data are checked for unusual values. All operations' data are compared to their own past operating profiles and also to trends from other operations. Data for missing operations are estimated based on similar operations or historical data. Survey data are subject to non-sampling errors such as omissions and mistakes in reporting and in processing. While these errors cannot be measured directly, they are minimized by reviewing all data for consistency and reasonableness.

Egg-type chicks hatched are comprised of all chicks of egg-type domesticated breeds including males and chicks destined for hatchery supply flocks and research purposes. The relationship of chicks hatched to chicken inventory and poultry marketings is carefully monitored. The disposition of egg-type chicks hatched prior to placement into the laying flock can vary significantly, which can make comparisons to changes in layer inventory inconsistent over time.

Intended placement data reported by leading breeders include pullet chicks expected from eggs sold the preceding month. The breeders in this report account for a large percentage of replacement pullets for hatchery supply flocks. Production of replacement pullets by these breeders indicates the number of pullets available to hatchery supply flocks several months before the pullets will actually move into the flocks. "Hatchery Supply Flocks" include all generations of layers which could lay eggs to supply a hatchery. This includes the generations of parents, grandparents, great-grandparents, pedigree, etc. Also included are research flocks, vaccine flocks, and specific pathogen-free flocks. The broiler cumulative potential placements are a moving total of the intended placements 7-15 months earlier. The egg-type cumulative potential placements of 7-18 months represent the first laying cycle. Molting and additional laying cycles will increase the cumulative potential placements of egg-type hatching flocks.

ACCESS TO REPORTS!!

For your convenience, there are several ways to obtain NASS reports, data products, and services:

INTERNET ACCESS

All NASS reports are available free of charge on the worldwide Internet. For access, connect to the Internet and go to the NASS Home Page at: www.usda.gov/nass/. Select "Today's Reports" or Publications and then Reports Calendar or Publications and then Search, by Title or Subject.

E-MAIL SUBSCRIPTION

All NASS reports are available by subscription free of charge direct to your e-mail address. Starting with the NASS Home Page at www.usda.gov/nass/, click on **Publications**, then click on the **Subscribe by E-mail** button which takes you to the page describing e-mail delivery of reports. Finally, click on **Go to the Subscription Page** and follow the instructions.

PRINTED REPORTS OR DATA PRODUCTS

CALL OUR TOLL-FREE ORDER DESK: 800-999-6779 (U.S. and Canada)
Other areas, please call 703-605-6220 FAX: 703-605-6900
(Visa, MasterCard, check, or money order acceptable for payment.)

ASSISTANCE

For **assistance** with general agricultural statistics or further information about NASS or its products or services, contact the **Agricultural Statistics Hotline** at **800-727-9540**, 7:30 a.m. to 4:00 p.m. ET, or e-mail: nass@nass.usda.gov.

The United States Department of Agriculture (USDA) prohibits discrimination in all its programs on the basis of race, color, national origin, gender, religion, age, disability, political beliefs, sexual orientation, and marital or family status. (Not all prohibited bases apply to all programs.) Persons with disabilities who require alternative means for communication of program information (braille, large print, audiotape, etc.) should contact the USDA's TARGET Center at 202-720-2600 (voice and TDD).

To file a complaint of discrimination, write USDA, Director, Office of Civil Rights, Room 326-W, Whitten Building, 1400 Independence Avenue, SW, Washington, D.C., 20250-9410, or call 202-720-5964 (voice or TDD). USDA is an equal opportunity provider and employer.