

Released March 22, 2005, by the National Agricultural Statistics Service (NASS), Agricultural Statistics Board, U.S. Department of Agriculture. For information on *Chickens and Eggs* call Sharyn Lavender at (202) 720-3244, for "Hatch" call Jody Roberts at (202) 690-8632, office hours 7:30 a.m. to 4:00 p.m. ET.

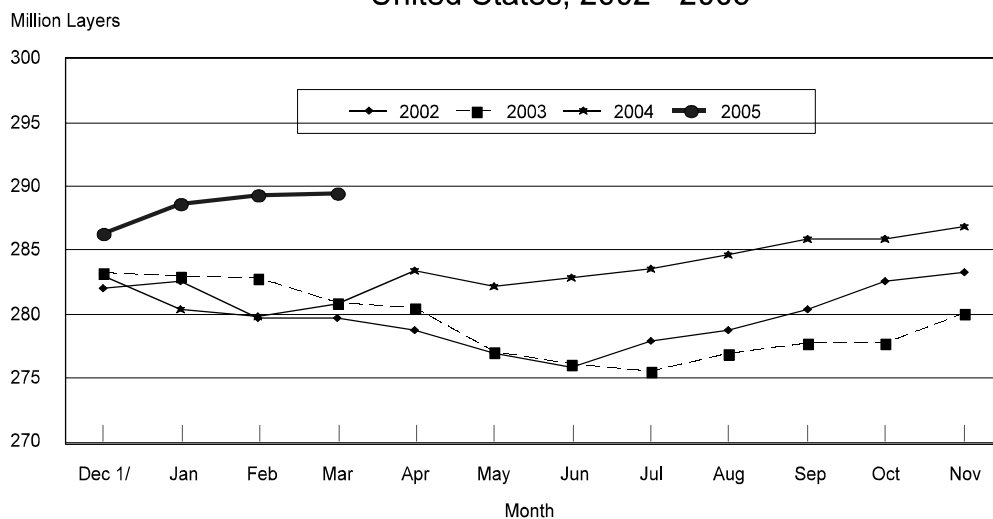
February Egg Production Up 3 Percent

U.S. egg production totaled 6.91 billion during February 2005, up slightly from last year. Production included 5.90 billion table eggs, and 1.01 billion hatching eggs, of which 956 million were broiler-type and 58 million were egg-type. The total number of layers during February 2005 averaged 349 million, up 3 percent from a year earlier. February egg production per 100 layers was 1,980 eggs, down 3 percent from February 2004.

All layers in the U.S. on March 1, 2005, totaled 349 million, up 3 percent from a year ago. The 349 million layers consisted of 289 million layers producing table or market type eggs, 57.1 million layers producing broiler-type hatching eggs, and 2.64 million layers producing egg-type hatching eggs. Rate of lay per day on March 1, 2005, averaged 71.4 eggs per 100 layers, up 1 percent from a year ago.

February 2005 contained 28 days, while February 2004 contained 29 days due to the leap year.

Table Egg Layers First of Month United States, 2002 - 2005



1/ Previous Year

Egg-Type Chicks Hatched Up 3 Percent

Egg-type chicks hatched during February totaled 32.9 million, up 3 percent from February 2004. Eggs in incubators totaled 34.7 million on March 1, 2005, up 1 percent from a year ago.

Domestic placements of egg-type pullet chicks for future hatchery supply flocks by leading breeders totaled 208,000 during February 2005, down 27 percent from February 2004.

Broiler Hatch Up Slightly

The February 2005 hatch of broiler-type chicks, at 731 million, was up slightly from February of the previous year. There were 659 million eggs in incubators on March 1, 2005, up 2 percent from a year earlier.

Leading breeders placed 7.21 million broiler-type pullet chicks for future domestic hatchery supply flocks during February 2005, down 2 percent from February 2004.

**All Layers: Average Number on Hand During the Month,
United States, 2002-05**

| Month | 2002 | 2003 | 2004 | 2005 |
|------------------|---------------------|---------------------|---------------------|---------------------|
| | <i>1,000 Layers</i> | <i>1,000 Layers</i> | <i>1,000 Layers</i> | <i>1,000 Layers</i> |
| Dec ¹ | 341,243 | 341,131 | 339,789 | 345,960 |
| Jan | 340,885 | 341,996 | 338,550 | 348,142 |
| Feb | 339,529 | 341,661 | 339,647 | 348,974 |
| Mar | 339,434 | 340,971 | 341,700 | |
| Apr | 338,809 | 339,268 | 342,612 | |
| May | 337,566 | 337,356 | 342,786 | |
| Jun | 337,339 | 335,979 | 342,835 | |
| Jul | 337,849 | 335,417 | 342,479 | |
| Aug | 338,397 | 335,565 | 342,983 | |
| Sep | 339,511 | 335,426 | 344,118 | |
| Oct | 340,461 | 336,557 | 345,056 | |
| Nov | 340,490 | 339,387 | 344,797 | |

¹ December preceding year.

**Eggs: Production During the Month by Type,
United States, 2004-05 ¹**

| Month | Total Eggs | | Table Eggs | | Hatching Eggs | |
|------------------|---------------------|---------------------|---------------------|---------------------|---------------------|---------------------|
| | 2004 | 2005 | 2004 | 2005 | 2004 | 2005 |
| | <i>Million Eggs</i> | <i>Million Eggs</i> | <i>Million Eggs</i> | <i>Million Eggs</i> | <i>Million Eggs</i> | <i>Million Eggs</i> |
| Dec ² | 7,554 | 7,728 | 6,492 | 6,643 | 1,063 | 1,085 |
| Jan | 7,386 | 7,617 | 6,323 | 6,518 | 1,063 | 1,100 |
| Feb | 6,901 | 6,908 | 5,895 | 5,895 | 1,007 | 1,014 |
| Mar | 7,547 | | 6,453 | | 1,095 | |
| Apr | 7,358 | | 6,284 | | 1,074 | |
| May | 7,513 | | 6,393 | | 1,120 | |
| Jun | 7,289 | | 6,209 | | 1,080 | |
| Jul | 7,557 | | 6,455 | | 1,102 | |
| Aug | 7,538 | | 6,443 | | 1,095 | |
| Sep | 7,344 | | 6,282 | | 1,063 | |
| Oct | 7,659 | | 6,569 | | 1,090 | |
| Nov | 7,482 | | 6,435 | | 1,047 | |
| During Year | 89,131 | | 76,236 | | 12,896 | |

¹ Totals may not add due to rounding.

² December preceding year.

**Layers and Eggs: Layers on Hand and Eggs Produced by Type,
and Forced Molt, United States, January-February 2004-05 ¹**

| Item | Unit | 2004 | 2005 | 2005 as % of 2004 |
|--|---------|---------|---------|-------------------------|
| Layers During Jan | 1,000 | | | |
| All Layers | | 338,550 | 348,142 | 103 |
| Table Egg Type | | 280,133 | 289,005 | 103 |
| Hatching Egg Type | | 58,417 | 59,137 | 101 |
| Broiler-Type Hatching | | 55,964 | 56,433 | 101 |
| Egg-Type Hatching | | 2,453 | 2,704 | 110 |
| Eggs per 100 Layers During Jan | Number | | | |
| All Layers | | 2,182 | 2,188 | 100 |
| Table Egg Type | | 2,257 | 2,255 | 100 |
| Hatching Egg Type | | 1,820 | 1,860 | 102 |
| Broiler-Type Hatching | | 1,792 | 1,836 | 102 |
| Egg-Type Hatching | | 2,446 | 2,367 | 97 |
| Eggs Produced During Jan | Million | | | |
| All Layers | | 7,386 | 7,617 | 103 |
| Table Egg Type | | 6,323 | 6,518 | 103 |
| Hatching Egg Type | | 1,063 | 1,100 | 103 |
| Broiler-Type Hatching | | 1,003 | 1,036 | 103 |
| Egg-Type Hatching | | 60 | 64 | 107 |
| Layers on Feb 1 | 1,000 | | | |
| All Layers | | 338,774 | 348,638 | 103 |
| Table Egg Type | | 279,854 | 289,334 | 103 |
| Hatching Egg Type | | 58,920 | 59,304 | 101 |
| Broiler-Type Hatching | | 56,474 | 56,627 | 100 |
| Egg-Type Hatching | | 2,446 | 2,677 | 109 |
| Eggs per 100 Layers on Feb 1 | Number | | | |
| All Layers | | 69.7 | 69.8 | 100 |
| Table Egg Type | | 72.1 | 71.7 | 99 |
| Hatching Egg Type | | 58.0 | 60.3 | 104 |
| Broiler-Type Hatching | | 57.2 | 59.5 | 104 |
| Egg-Type Hatching | | 76.8 | 78.0 | 102 |
| Forced Molt Layers on Feb 1 | Percent | | | |
| Percent Being Molted | | 4.9 | 4.6 | 94 |
| Percent with Molt Completed | | 22.7 | 21.7 | 96 |
| Layers Sold for Slaughter During Jan | 1,000 | 15,104 | 13,963 | 92 |
| Layers Rendered, Died, Destroyed, Composted or Disappeared For Any Reason During Jan | 1,000 | 8,098 | 6,647 | 82 |
| Pullets on Feb 1 | 1,000 | 97,685 | 100,520 | 103 |
| Pullets Added During Jan ² | 1,000 | 23,300 | 24,130 | 104 |

¹ Totals may not add due to rounding.

² Pullet chicks less than 3 days old added to pullet flocks.

**Layers and Eggs: Layers on Hand and Eggs Produced by Type,
and Forced Molt, United States, February-March 2004-05 ¹**

| Item | Unit | 2004 | 2005 | 2005 as % of 2004 |
|--|---------|---------|---------|-------------------------|
| Layers During Feb | 1,000 | | | |
| All Layers | | 339,647 | 348,974 | 103 |
| Table Egg Type | | 280,347 | 289,424 | 103 |
| Hatching Egg Type | | 59,300 | 59,550 | 100 |
| Broiler-Type Hatching | | 56,848 | 56,885 | 100 |
| Egg-Type Hatching | | 2,452 | 2,665 | 109 |
| Eggs per 100 Layers During Feb | Number | | | |
| All Layers | | 2,032 | 1,980 | 97 |
| Table Egg Type | | 2,103 | 2,037 | 97 |
| Hatching Egg Type | | 1,698 | 1,703 | 100 |
| Broiler-Type Hatching | | 1,676 | 1,681 | 100 |
| Egg-Type Hatching | | 2,202 | 2,176 | 99 |
| Eggs Produced During Feb | Million | | | |
| All Layers | | 6,901 | 6,908 | 100 |
| Table Egg Type | | 5,895 | 5,895 | 100 |
| Hatching Egg Type | | 1,007 | 1,014 | 101 |
| Broiler-Type Hatching | | 953 | 956 | 100 |
| Egg-Type Hatching | | 54 | 58 | 107 |
| Layers on Mar 1 | 1,000 | | | |
| All Layers | | 340,479 | 349,258 | 103 |
| Table Egg Type | | 280,819 | 289,487 | 103 |
| Hatching Egg Type | | 59,660 | 59,771 | 100 |
| Broiler-Type Hatching | | 57,210 | 57,128 | 100 |
| Egg-Type Hatching | | 2,450 | 2,643 | 108 |
| Eggs per 100 Layers on Mar 1 | Number | | | |
| All Layers | | 70.4 | 71.4 | 101 |
| Table Egg Type | | 72.9 | 73.7 | 101 |
| Hatching Egg Type | | 59.0 | 60.5 | 103 |
| Broiler-Type Hatching | | 58.3 | 59.8 | 103 |
| Egg-Type Hatching | | 75.0 | 77.4 | 103 |
| Forced Molt Layers, Mar 1 | Percent | | | |
| Percent Being Molted | | 4.6 | 3.0 | 65 |
| Percent with Molt Completed | | 23.4 | 23.0 | 98 |
| Layers Sold for Slaughter During Feb | 1,000 | 14,749 | 14,371 | 97 |
| Layers Rendered, Died, Destroyed, Composted or Disappeared For Any Reason During Feb | 1,000 | 7,857 | 6,975 | 89 |
| Pullets on Mar 1 | 1,000 | 96,903 | 101,111 | 104 |
| Pullets Added During Feb ² | 1,000 | 21,785 | 23,978 | 110 |

¹ Totals may not add due to rounding.

² Pullet chicks less than 3 days old added to pullet flocks.

**Layers and Eggs: Layers on Hand and Eggs Produced by State
and United States, During January 2004-05**

| State | Table Egg Layers in Flocks 30,000 and Above | | All Layers ¹ | | Eggs per 100 for All Layers ¹ | |
|----------------------|--|--------------|-------------------------|--------------|---|---------------|
| | 2004 | 2005 | 2004 | 2005 | 2004 | 2005 |
| | <i>1,000</i> | <i>1,000</i> | <i>1,000</i> | <i>1,000</i> | <i>Number</i> | <i>Number</i> |
| AL | 2,013 | 1,872 | 9,367 | 9,255 | 1,890 | 1,945 |
| AR | 4,681 | 4,582 | 15,366 | 15,138 | 1,900 | 1,936 |
| CA | 19,966 | 20,020 | 20,442 | 20,512 | 2,172 | 2,238 |
| CO | 3,613 | 3,355 | 4,086 | 3,890 | 2,349 | 2,339 |
| CT | 2,904 | 2,889 | 2,957 | 2,947 | 2,435 | 2,443 |
| FL | 10,530 | 9,861 | 11,039 | 10,325 | 2,292 | 2,286 |
| GA | 11,403 | 11,020 | 20,674 | 20,365 | 2,075 | 2,121 |
| HI | 455 | 474 | 492 | 511 | 1,972 | 2,035 |
| IL | 3,549 | 4,302 | 3,763 | 4,527 | 2,046 | 1,988 |
| IN | 22,464 | 22,726 | 23,195 | 23,463 | 2,250 | 2,212 |
| IA | 39,913 | 48,999 | 40,565 | 49,771 | 2,246 | 2,176 |
| ME | 4,024 | 2,617 | 4,069 | 2,674 | 2,261 | 1,683 |
| MD | 3,017 | 3,081 | 3,117 | 3,184 | 2,310 | 2,324 |
| MI | 7,185 | 7,131 | 7,447 | 7,389 | 2,175 | 2,206 |
| MN | 10,498 | 10,398 | 11,093 | 10,946 | 2,254 | 2,275 |
| MS | 1,868 | 1,678 | 6,898 | 7,144 | 1,943 | 1,876 |
| MO | 5,550 | 6,110 | 6,841 | 7,362 | 2,295 | 2,200 |
| NE | 11,691 | 11,969 | 11,766 | 12,044 | 2,269 | 2,292 |
| NY | 3,546 | 3,777 | 3,929 | 4,106 | 2,469 | 2,435 |
| NC | 3,399 | 3,373 | 10,839 | 10,954 | 1,947 | 1,981 |
| OH | 26,831 | 27,531 | 27,231 | 28,017 | 2,218 | 2,252 |
| OK | 1,959 | 1,875 | 4,145 | 4,057 | 1,954 | 1,947 |
| OR | 2,813 | 2,746 | 2,979 | 2,924 | 2,249 | 2,291 |
| PA | 21,882 | 22,733 | 23,643 | 24,484 | 2,301 | 2,336 |
| SC | 4,071 | 4,221 | 5,249 | 5,288 | 2,191 | 2,307 |
| SD | 3,140 | 3,075 | 3,340 | 3,175 | 2,216 | 2,331 |
| TX | 14,123 | 13,541 | 18,543 | 18,064 | 2,206 | 2,231 |
| VA | 1,315 | 1,241 | 3,253 | 3,124 | 1,937 | 2,049 |
| WA | 4,861 | 4,917 | 4,930 | 4,988 | 2,170 | 2,265 |
| WI | 3,844 | 4,625 | 4,368 | 5,122 | 2,266 | 2,245 |
| Oth Sts ² | 16,940 | 16,309 | 22,924 | 22,392 | 2,172 | 2,197 |
| US | 274,048 | 283,048 | 338,550 | 348,142 | 2,182 | 2,188 |

¹ Includes all layers and eggs produced in both table egg and hatching egg flocks regardless of size.

² Estimates for individual States are not available.

**Layers and Eggs: Layers on Hand and Eggs Produced by State
and United States, During February 2004-05**

| State | Table Egg Layers in Flocks 30,000 and Above | | All Layers ¹ | | Eggs per 100 for All Layers ¹ | |
|----------------------|--|--------------|-------------------------|--------------|---|---------------|
| | 2004 | 2005 | 2004 | 2005 | 2004 | 2005 |
| | <i>1,000</i> | <i>1,000</i> | <i>1,000</i> | <i>1,000</i> | <i>Number</i> | <i>Number</i> |
| AL | 1,935 | 1,868 | 9,190 | 9,232 | 1,752 | 1,787 |
| AR | 4,820 | 4,418 | 15,869 | 15,099 | 1,758 | 1,729 |
| CA | 19,940 | 20,048 | 20,416 | 20,546 | 2,077 | 2,020 |
| CO | 3,527 | 3,278 | 3,998 | 3,813 | 2,126 | 2,151 |
| CT | 2,811 | 2,936 | 2,865 | 2,996 | 2,234 | 2,203 |
| FL | 10,763 | 9,960 | 11,275 | 10,465 | 2,146 | 2,064 |
| GA | 11,285 | 11,534 | 20,567 | 20,958 | 1,940 | 1,894 |
| HI | 462 | 464 | 501 | 500 | 1,856 | 1,880 |
| IL | 3,651 | 4,226 | 3,871 | 4,456 | 1,989 | 1,997 |
| IN | 22,330 | 22,814 | 23,084 | 23,545 | 2,071 | 2,005 |
| IA | 39,770 | 49,082 | 40,453 | 49,860 | 2,158 | 2,006 |
| ME | 3,948 | 2,675 | 3,993 | 2,733 | 2,079 | 951 |
| MD | 3,007 | 2,981 | 3,100 | 3,088 | 2,129 | 2,073 |
| MI | 7,162 | 7,264 | 7,424 | 7,527 | 2,020 | 2,019 |
| MN | 10,540 | 10,488 | 11,123 | 11,023 | 2,113 | 2,087 |
| MS | 1,862 | 1,611 | 7,066 | 7,132 | 1,797 | 1,753 |
| MO | 5,806 | 6,124 | 7,166 | 7,415 | 2,107 | 1,996 |
| NE | 11,764 | 12,018 | 11,839 | 12,093 | 2,145 | 2,018 |
| NY | 3,659 | 3,852 | 4,020 | 4,177 | 2,313 | 2,179 |
| NC | 3,341 | 3,339 | 10,894 | 10,948 | 1,781 | 1,790 |
| OH | 26,687 | 27,641 | 27,109 | 28,129 | 1,999 | 1,984 |
| OK | 1,942 | 1,836 | 4,118 | 3,958 | 1,821 | 1,769 |
| OR | 2,878 | 2,677 | 3,054 | 2,843 | 2,096 | 2,040 |
| PA | 22,165 | 22,713 | 23,938 | 24,455 | 2,168 | 2,135 |
| SC | 4,140 | 4,041 | 5,266 | 5,138 | 1,994 | 2,044 |
| SD | 3,136 | 3,027 | 3,336 | 3,127 | 2,158 | 2,111 |
| TX | 14,045 | 13,626 | 18,534 | 18,142 | 1,996 | 2,006 |
| VA | 1,366 | 1,200 | 3,388 | 3,107 | 1,830 | 1,770 |
| WA | 4,842 | 4,928 | 4,912 | 4,998 | 2,036 | 2,141 |
| WI | 3,890 | 4,537 | 4,412 | 5,040 | 2,131 | 2,103 |
| Oth Sts ² | 16,786 | 16,262 | 22,866 | 22,431 | 1,985 | 2,002 |
| US | 274,260 | 283,468 | 339,647 | 348,974 | 2,032 | 1,980 |

¹ Includes all layers and eggs produced in both table egg and hatching egg flocks regardless of size.

² Estimates for individual States are not available.

**Egg Production: By Type, State, and United States,
January 2004-05 ¹**

| State | Total Production | | Table Eggs ² | | Hatching Eggs ² | |
|----------------------|---------------------|---------------------|-------------------------|---------------------|----------------------------|---------------------|
| | 2004 | 2005 | 2004 | 2005 | 2004 | 2005 |
| | <i>Million Eggs</i> | <i>Million Eggs</i> | <i>Million Eggs</i> | <i>Million Eggs</i> | <i>Million Eggs</i> | <i>Million Eggs</i> |
| AL | 177 | 180 | 47 | 43 | 130 | 137 |
| AR | 292 | 293 | 106 | 107 | 186 | 186 |
| CA | 444 | 459 | | | | |
| CO | 96 | 91 | | | | |
| CT | 72 | 72 | | | | |
| FL | 253 | 236 | 243 | 228 | 10 | 8 |
| GA | 429 | 432 | 257 | 254 | 172 | 178 |
| HI | 9.7 | 10.4 | 9.7 | 10.4 | 0 | 0 |
| IL | 77 | 90 | 74 | 87 | 3 | 3 |
| IN | 522 | 519 | 510 | 506 | 12 | 13 |
| IA | 911 | 1,083 | | | | |
| ME | 92 | 45 | | | | |
| MD | 72 | 74 | 71 | 73 | 1 | 1 |
| MI | 162 | 163 | | | | |
| MN | 250 | 249 | 241 | 241 | 9 | 8 |
| MS | 134 | 134 | 42 | 38 | 92 | 96 |
| MO | 157 | 162 | | | | |
| NE | 267 | 276 | 267 | 276 | 0 | 0 |
| NY | 97 | 100 | | | | |
| NC | 211 | 217 | 85 | 80 | 126 | 137 |
| OH | 604 | 631 | | | | |
| OK | 81 | 79 | 46 | 44 | 35 | 35 |
| OR | 67 | 67 | 65 | 65 | 2 | 2 |
| PA | 544 | 572 | 528 | 555 | 16 | 17 |
| SC | 115 | 122 | 95 | 103 | 20 | 19 |
| SD | 74 | 74 | 74 | 74 | 0 | 0 |
| TX | 409 | 403 | | | | |
| VA | 63 | 64 | 29 | 30 | 34 | 34 |
| WA | 107 | 113 | | | | |
| WI | 99 | 115 | | | | |
| Oth Sts ³ | 498 | 492 | 410 | 400 | 88 | 93 |
| US | 7,386 | 7,617 | 6,323 | 6,518 | 1,063 | 1,100 |

¹ Totals may not add due to rounding.

² Data by type of flock not shown for some States to avoid disclosing individual operations.

³ Estimates for individual States are not available.

**Egg Production: By Type, State, and United States,
February 2004-05 ¹**

| State | Total Production | | Table Eggs ² | | Hatching Eggs ² | |
|----------------------|---------------------|---------------------|-------------------------|---------------------|----------------------------|---------------------|
| | 2004 | 2005 | 2004 | 2005 | 2004 | 2005 |
| | <i>Million Eggs</i> | <i>Million Eggs</i> | <i>Million Eggs</i> | <i>Million Eggs</i> | <i>Million Eggs</i> | <i>Million Eggs</i> |
| AL | 161 | 165 | 41 | 40 | 120 | 125 |
| AR | 279 | 261 | 98 | 90 | 181 | 171 |
| CA | 424 | 415 | | | | |
| CO | 85 | 82 | | | | |
| CT | 64 | 66 | | | | |
| FL | 242 | 216 | 232 | 208 | 10 | 8 |
| GA | 399 | 397 | 238 | 234 | 161 | 163 |
| HI | 9.3 | 9.4 | 9.3 | 9.4 | 0 | 0 |
| IL | 77 | 89 | 74 | 86 | 3 | 3 |
| IN | 478 | 472 | 467 | 461 | 11 | 11 |
| IA | 873 | 1,000 | | | | |
| ME | 83 | 26 | | | | |
| MD | 66 | 64 | 65 | 63 | 1 | 1 |
| MI | 150 | 152 | | | | |
| MN | 235 | 230 | 227 | 223 | 8 | 7 |
| MS | 127 | 125 | 38 | 34 | 89 | 91 |
| MO | 151 | 148 | | | | |
| NE | 254 | 244 | 254 | 244 | 0 | 0 |
| NY | 93 | 91 | | | | |
| NC | 194 | 196 | 76 | 71 | 118 | 125 |
| OH | 542 | 558 | | | | |
| OK | 75 | 70 | 42 | 39 | 33 | 31 |
| OR | 64 | 58 | 62 | 56 | 2 | 2 |
| PA | 519 | 522 | 503 | 507 | 16 | 15 |
| SC | 105 | 105 | 87 | 88 | 18 | 17 |
| SD | 72 | 66 | 72 | 66 | 0 | 0 |
| TX | 370 | 364 | | | | |
| VA | 62 | 55 | 29 | 23 | 33 | 32 |
| WA | 100 | 107 | | | | |
| WI | 94 | 106 | | | | |
| Oth Sts ³ | 454 | 449 | 372 | 362 | 83 | 88 |
| US | 6,901 | 6,908 | 5,895 | 5,895 | 1,007 | 1,014 |

¹ Totals may not add due to rounding.

² Data by type of flock not shown for some States to avoid disclosing individual operations.

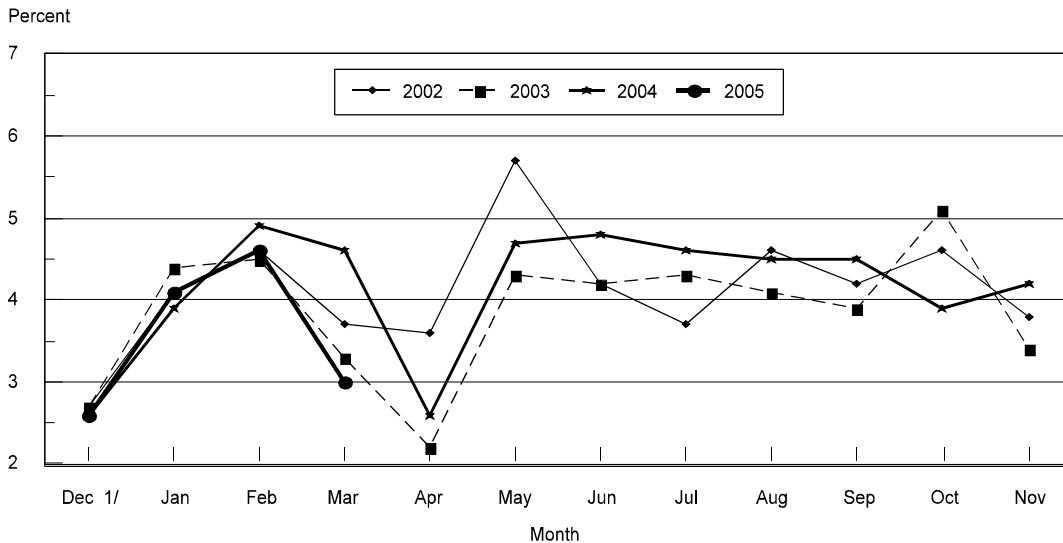
³ Estimates for individual States are not available.

**Forced Molt: Percent of All Layers by Month,
United States, 2004-05 ¹**

| Month | Percent Being Molted | | Percent with Molt Completed | |
|-------|----------------------|----------------|-----------------------------|----------------|
| | 2004 | 2005 | 2004 | 2005 |
| | <i>Percent</i> | <i>Percent</i> | <i>Percent</i> | <i>Percent</i> |
| Jan | 3.9 | 4.1 | 22.8 | 23.2 |
| Feb | 4.9 | 4.6 | 22.7 | 21.7 |
| Mar | 4.6 | 3.0 | 23.4 | 23.0 |
| Apr | 2.6 | | 23.4 | |
| May | 4.7 | | 22.2 | |
| Jun | 4.8 | | 23.1 | |
| Jul | 4.6 | | 24.0 | |
| Aug | 4.5 | | 23.4 | |
| Sep | 4.5 | | 23.3 | |
| Oct | 3.9 | | 23.6 | |
| Nov | 4.2 | | 23.7 | |
| Dec | 2.6 | | 23.7 | |

¹ As of first of month.

**All Layers : United States
Percent Being Molted, 2002 - 2005
First of Month**



1/ Previous Year

**Forced Molt: Percent of All Layers by State
and United States, March 2004-05 ¹**

| State | Percent Being Molted | | Percent with Molt Completed | |
|----------------------|----------------------|----------------|-----------------------------|----------------|
| | 2004 | 2005 | 2004 | 2005 |
| | <i>Percent</i> | <i>Percent</i> | <i>Percent</i> | <i>Percent</i> |
| AL | 0.0 | 0.5 | 3.5 | 5.0 |
| AR | 2.5 | 2.0 | 8.0 | 10.0 |
| CA | 2.5 | 2.0 | 31.0 | 32.0 |
| CO | 4.0 | 1.0 | 20.5 | 23.5 |
| CT | 2.0 | 0.0 | 10.0 | 10.0 |
| FL | 3.5 | 2.5 | 30.5 | 25.0 |
| GA | 2.5 | 2.0 | 13.0 | 15.5 |
| HI | 6.0 | 6.5 | 50.5 | 47.5 |
| IL | 0.0 | 0.0 | 38.0 | 33.0 |
| IN | 4.5 | 2.0 | 33.0 | 32.5 |
| IA | 12.0 | 5.0 | 40.0 | 32.5 |
| ME | 0.0 | 0.0 | 0.0 | 0.0 |
| MD | 9.5 | 2.5 | 23.0 | 35.0 |
| MI | 7.0 | 2.5 | 29.0 | 33.0 |
| MN | 2.5 | 3.0 | 27.5 | 27.0 |
| MS | 2.0 | 1.0 | 10.0 | 9.5 |
| MO | 5.0 | 6.0 | 15.0 | 22.0 |
| NE | 4.5 | 10.0 | 22.0 | 20.5 |
| NY | 3.0 | 2.5 | 2.0 | 6.5 |
| NC | 1.5 | 1.5 | 8.0 | 7.0 |
| OH | 7.0 | 6.0 | 21.5 | 22.5 |
| OK | 0.5 | 0.0 | 5.2 | 5.0 |
| OR | 4.0 | 2.0 | 36.0 | 31.0 |
| PA | 3.5 | 2.5 | 20.0 | 15.5 |
| SC | 1.5 | 0.0 | 24.0 | 23.5 |
| SD | 16.0 | 3.0 | 23.0 | 36.0 |
| TX | 1.5 | 1.0 | 23.0 | 19.5 |
| VA | 0.0 | 0.0 | 12.5 | 6.0 |
| WA | 4.0 | 0.0 | 49.0 | 38.5 |
| WI | 5.0 | 2.5 | 33.5 | 26.0 |
| Oth Sts ² | 4.5 | 2.3 | 21.9 | 28.5 |
| US | 4.6 | 3.0 | 23.4 | 23.0 |

¹ As of first of month.

² Estimates for individual States are not available.

**Hatchery Production: Eggs in Incubators, Chicks Hatched,
and Placements by Type, United States, February-March 2004-05**

| Item | 2004 | 2005 | 2005 as % of 2004 |
|---|--------------|--------------|-------------------------|
| | <i>1,000</i> | <i>1,000</i> | <i>Percent</i> |
| Egg-Type | | | |
| Eggs in Incubators on Mar 1 | 34,263 | 34,706 | 101 |
| Chicks Hatched During Feb | 32,078 | 32,910 | 103 |
| Chicks Hatched Jan thru Feb | 67,428 | 69,671 | 103 |
| Pullets Hatched During Feb for Intended Placements in Hatchery Supply Flocks | 285 | 208 | 73 |
| 7-18 Month Earlier ¹ | 2,960 | 3,207 | 108 |
| Broiler-Type | | | |
| Eggs in Incubators on Mar 1 | 647,596 | 658,866 | 102 |
| Chicks Hatched During Feb | 727,936 | 731,274 | 100 |
| Chicks Hatched Jan thru Feb | 1,501,906 | 1,527,300 | 102 |
| Pullets Hatched During Feb for Intended Placements in Hatchery Supply Flocks | 7,340 | 7,205 | 98 |
| 7-15 Months Earlier ² | 61,256 | 62,345 | 102 |

¹ 2005 includes pullet chicks hatched Aug 2003 through Jul 2004.

² 2005 includes pullet chicks hatched Nov 2003 through Jul 2004.

**Egg-Type Eggs in Incubators: By Region and United States,
March 1, 2004-05**

| Region | 2004 | 2005 | 2005 as % of 2004 |
|-----------------|--------------|--------------|-------------------------|
| | <i>1,000</i> | <i>1,000</i> | <i>Percent</i> |
| North Atlantic | 6,263 | 5,842 | 93 |
| E North Central | 6,502 | 6,774 | 104 |
| W North Central | 8,240 | 6,943 | 84 |
| South Atlantic | 2,463 | 3,869 | 157 |
| South Central | 5,586 | 6,406 | 115 |
| West | 5,209 | 4,872 | 94 |
| US | 34,263 | 34,706 | 101 |

Regions:

North Atlantic = CT, ME, MA, NH, NJ, NY, PA, RI, VT.

E North Central = IL, IN, MI, OH, WI.

W North Central = IA, KS, MN, MO, NE, ND, SD.

South Atlantic = DE, FL, GA, MD, NC, SC, VA, WV.

South Central = AL, AR, KY, LA, MS, OK, TN, TX.

West = AK, AZ, CA, CO, HI, ID, MT, NM, NV, OR, UT, WA, WY.

**Egg-Type Chicks Hatched: By State and United States,
February 2004-05**

| State | February | | | Jan-Feb | | |
|----------------------|--------------|--------------|-------------------------|--------------|--------------|-------------------------|
| | 2004 | 2005 | 2005 as % of 2004 | 2004 | 2005 | 2005 as % of 2004 |
| | <i>1,000</i> | <i>1,000</i> | <i>Percent</i> | <i>1,000</i> | <i>1,000</i> | <i>Percent</i> |
| FL | 615 | 648 | 105 | 1,324 | 1,556 | 118 |
| GA | 2,327 | 2,167 | 93 | 4,846 | 4,494 | 93 |
| IN | 4,894 | 4,532 | 93 | 9,990 | 10,070 | 101 |
| IA | 5,675 | 4,999 | 88 | 11,693 | 10,831 | 93 |
| MN | 1,112 | 818 | 74 | 2,222 | 1,636 | 74 |
| PA | 4,849 | 4,790 | 99 | 9,784 | 10,608 | 108 |
| Oth Sts ¹ | 12,606 | 14,956 | 119 | 27,569 | 30,476 | 111 |
| US | 32,078 | 32,910 | 103 | 67,428 | 69,671 | 103 |

¹ Not published separately to avoid disclosing data for individual operations.

Egg-Type Chicks Hatched: By Month, United States, 2003-05

| Month | By Months | | | | Cumulative | | | |
|-------|--------------|--------------|--------------|-------------------------|--------------|--------------|--------------|-------------------------|
| | 2003 | 2004 | 2005 | 2005 as % of 2004 | 2003 | 2004 | 2005 | 2005 as % of 2004 |
| | <i>1,000</i> | <i>1,000</i> | <i>1,000</i> | <i>Percent</i> | <i>1,000</i> | <i>1,000</i> | <i>1,000</i> | <i>Percent</i> |
| Jan | 33,521 | 35,350 | 36,761 | 104 | 33,521 | 35,350 | 36,761 | 104 |
| Feb | 30,510 | 32,078 | 32,910 | 103 | 64,031 | 67,428 | 69,671 | 103 |
| Mar | 36,775 | 37,530 | | | 100,806 | 104,958 | | |
| Apr | 37,804 | 37,514 | | | 138,610 | 142,472 | | |
| May | 37,631 | 38,631 | | | 176,241 | 181,103 | | |
| Jun | 36,602 | 38,066 | | | 212,843 | 219,169 | | |
| Jul | 35,566 | 34,127 | | | 248,409 | 253,296 | | |
| Aug | 33,199 | 36,024 | | | 281,608 | 289,320 | | |
| Sep | 35,763 | 36,750 | | | 317,371 | 326,070 | | |
| Oct | 34,812 | 35,971 | | | 352,183 | 362,041 | | |
| Nov | 30,241 | 38,421 | | | 382,424 | 400,462 | | |
| Dec | 33,645 | 37,035 | | | 416,069 | 437,497 | | |

**Intended Placements: Egg-Type Pullet Chicks for Hatchery Supply
Flocks by Month and Total, United States, 2003-05 ¹**

| Month | Pullet Chicks Hatched | | | 2005 as % of 2004 | Cumulative Potential Placements Relative to Current Supply Flocks 7-18 Months Earlier ² | | |
|-------|-----------------------|--------------|--------------|-------------------------|--|--------------|--------------|
| | 2003 | 2004 | 2005 | | 2003 | 2004 | 2005 |
| | <i>1,000</i> | <i>1,000</i> | <i>1,000</i> | <i>Percent</i> | <i>1,000</i> | <i>1,000</i> | <i>1,000</i> |
| Jan | 210 | 164 | 157 | 96 | 2,974 | 3,012 | 3,194 |
| Feb | 225 | 285 | 208 | 73 | 2,916 | 2,960 | 3,207 |
| Mar | 319 | 401 | | | 2,886 | 2,927 | 3,332 |
| Apr | 280 | 311 | | | 2,944 | 2,923 | 3,264 |
| May | 289 | 255 | | | 2,980 | 3,047 | 3,222 |
| Jun | 309 | 212 | | | 2,946 | 3,139 | 3,128 |
| Jul | 230 | 243 | | | 2,927 | 3,198 | 3,117 |
| Aug | 188 | 313 | | | 2,909 | 3,152 | 3,110 |
| Sep | 273 | 205 | | | 2,887 | 3,212 | 3,033 |
| Oct | 310 | 268 | | | 2,969 | 3,294 | |
| Nov | 319 | 225 | | | 2,954 | 3,325 | |
| Dec | 246 | 235 | | | 2,924 | 3,291 | |
| Total | 3,198 | 3,117 | | | | | |

¹ Reported by leading breeders. Coverage may not be 100 percent. Includes expected pullet chicks from eggs sold during the preceding month at the rate of 125 pullet chicks per 30 dozen case of eggs.

² For February 2005, includes breeder pullet chicks hatched Aug 2003 through Jul 2004. The 7-18 months represent the first laying cycle. Molting and additional laying cycles will increase the cumulative potential placements.

**Broiler-Type Eggs in Incubators: By Region
and United States, March 1, 2004-05**

| Region | 2004 | 2005 | 2005 as % of 2004 |
|-----------------|--------------|--------------|-------------------------|
| | <i>1,000</i> | <i>1,000</i> | <i>Percent</i> |
| North Atlantic | 12,016 | 12,188 | 101 |
| E North Central | 9,185 | 8,319 | 91 |
| W North Central | 22,826 | 23,429 | 103 |
| South Atlantic | 232,310 | 239,577 | 103 |
| South Central | 346,259 | 349,880 | 101 |
| West | 25,000 | 25,473 | 102 |
| US | 647,596 | 658,866 | 102 |

**Broiler-Type Chicks Hatched: By State
and United States, February 2004-05**

| State | February | | | Jan-Feb | | |
|----------------------|--------------|--------------|-------------------------|--------------|--------------|-------------------------|
| | 2004 | 2005 | 2005 as % of 2004 | 2004 | 2005 | 2005 as % of 2004 |
| | <i>1,000</i> | <i>1,000</i> | <i>Percent</i> | <i>1,000</i> | <i>1,000</i> | <i>Percent</i> |
| AL | 101,222 | 100,258 | 99 | 210,892 | 209,521 | 99 |
| AR | 105,663 | 104,000 | 98 | 218,777 | 218,494 | 100 |
| DE | 12,772 | 13,004 | 102 | 26,316 | 27,706 | 105 |
| FL | 4,669 | 4,483 | 96 | 9,609 | 9,337 | 97 |
| GA | 113,447 | 111,770 | 99 | 233,341 | 235,489 | 101 |
| KY | 22,017 | 23,483 | 107 | 46,893 | 48,982 | 104 |
| LA | 12,538 | 13,446 | 107 | 25,949 | 28,107 | 108 |
| MD | 29,362 | 28,134 | 96 | 61,441 | 59,922 | 98 |
| MS | 67,390 | 67,202 | 100 | 138,596 | 139,705 | 101 |
| NC | 60,569 | 60,474 | 100 | 124,878 | 126,785 | 102 |
| OK | 21,139 | 21,794 | 103 | 43,666 | 45,389 | 104 |
| PA | 12,018 | 12,951 | 108 | 24,660 | 27,119 | 110 |
| SC | 12,313 | 16,705 | 136 | 25,504 | 33,998 | 133 |
| TX | 50,491 | 50,004 | 99 | 103,386 | 104,514 | 101 |
| VA | 21,598 | 21,485 | 99 | 44,777 | 45,072 | 101 |
| CA, MO, TN, & WV | 58,395 | 60,356 | 103 | 119,663 | 125,389 | 105 |
| 19 Sts ¹ | 705,603 | 709,549 | 101 | 1,458,348 | 1,485,529 | 102 |
| Oth Sts ² | 22,333 | 21,725 | 97 | 43,558 | 41,771 | 96 |
| US | 727,936 | 731,274 | 100 | 1,501,906 | 1,527,300 | 102 |

¹ States in the weekly hatchery production estimating program.

² Not published separately to avoid disclosing data for individual operations.

Broiler-Type Chicks Hatched: By Month, United States, 2003-05

| Month | By Months | | | | Cumulative | | | |
|-------|--------------|--------------|--------------|-------------------------|--------------|--------------|--------------|-------------------------|
| | 2003 | 2004 | 2005 | 2005 as % of 2004 | 2003 | 2004 | 2005 | 2005 as % of 2004 |
| | <i>1,000</i> | <i>1,000</i> | <i>1,000</i> | <i>Percent</i> | <i>1,000</i> | <i>1,000</i> | <i>1,000</i> | <i>Percent</i> |
| Jan | 759,674 | 773,970 | 796,026 | 103 | 759,674 | 773,970 | 796,026 | 103 |
| Feb | 693,549 | 727,936 | 731,274 | 100 | 1,453,223 | 1,501,906 | 1,527,300 | 102 |
| Mar | 774,354 | 791,149 | | | 2,227,577 | 2,293,055 | | |
| Apr | 760,638 | 774,452 | | | 2,988,215 | 3,067,507 | | |
| May | 792,813 | 809,725 | | | 3,781,028 | 3,877,232 | | |
| Jun | 774,679 | 785,844 | | | 4,555,707 | 4,663,076 | | |
| Jul | 777,838 | 806,827 | | | 5,333,545 | 5,469,903 | | |
| Aug | 784,037 | 809,820 | | | 6,117,582 | 6,279,723 | | |
| Sep | 739,481 | 769,865 | | | 6,857,063 | 7,049,588 | | |
| Oct | 734,961 | 757,530 | | | 7,592,024 | 7,807,118 | | |
| Nov | 707,627 | 730,789 | | | 8,299,651 | 8,537,907 | | |
| Dec | 780,094 | 793,047 | | | 9,079,745 | 9,330,954 | | |

**Intended Placements: Broiler-Type Pullet Chicks for Hatchery
Supply Flocks by Month and Total, 2003-05 ¹**

| Month | Pullet Chicks Hatched | | | 2005 as % of 2004 | Cumulative Potential Placements Relative to Current Supply Flocks 7-15 Months Earlier ² | | |
|---------------------------------------|-----------------------|--------------|--------------|-------------------------|--|--------------|--------------|
| | 2003 | 2004 | 2005 | | 2003 | 2004 | 2005 |
| | <i>1,000</i> | <i>1,000</i> | <i>1,000</i> | <i>Percent</i> | <i>1,000</i> | <i>1,000</i> | <i>1,000</i> |
| US Place- ments | | | | | | | |
| Jan | 6,269 | 6,811 | 6,289 | 92 | 62,473 | 60,450 | 61,823 |
| Feb | 6,659 | 7,340 | 7,205 | 98 | 62,371 | 61,256 | 62,345 |
| Mar | 7,038 | 6,815 | | | 62,559 | 61,719 | 62,679 |
| Apr | 6,735 | 6,402 | | | 62,658 | 61,898 | 63,459 |
| May | 7,323 | 7,492 | | | 62,659 | 61,941 | 63,235 |
| Jun | 6,748 | 6,727 | | | 62,322 | 62,228 | 62,903 |
| Jul | 7,071 | 6,834 | | | 62,022 | 62,168 | 62,163 |
| Aug | 7,401 | 7,280 | | | 61,477 | 62,244 | 62,050 |
| Sep | 6,654 | 7,758 | | | 60,539 | 62,261 | 61,763 |
| Oct | 6,312 | 6,587 | | | 60,371 | 62,328 | |
| Nov | 6,946 | 7,008 | | | 60,504 | 61,659 | |
| Dec | 6,978 | 6,075 | | | 60,378 | 61,750 | |
| Annual Total | 82,134 | 83,129 | | | | | |
| Total Place- ments ³ | | | | | | | |
| Jan | 7,388 | 7,812 | 7,684 | 98 | | | |
| Feb | 8,094 | 8,251 | 8,544 | 104 | | | |
| Mar | 8,549 | 7,801 | | | | | |
| Apr | 8,062 | 7,288 | | | | | |
| May | 8,604 | 8,596 | | | | | |
| Jun | 8,341 | 8,100 | | | | | |
| Jul | 8,555 | 8,149 | | | | | |
| Aug | 8,756 | 8,416 | | | | | |
| Sep | 8,338 | 9,184 | | | | | |
| Oct | 7,695 | 7,766 | | | | | |
| Nov | 8,246 | 8,291 | | | | | |
| Dec | 8,185 | 7,435 | | | | | |
| Annual Total | 98,813 | 97,089 | | | | | |

¹ Reported by leading breeders. Coverage may not be 100 percent. Includes expected pullet chicks from eggs sold during the preceding month at the rate of 125 pullet chicks per 30 dozen case of eggs.

² For Feb 2005, includes breeder pullet chicks hatched Nov 2003 through Jul 2004.

³ U.S. production of intended placements worldwide.

Procedures and Reliability

Data Sources: Primary data for the "**Chickens and Eggs**" report are from weekly and/or monthly questionnaires sent to producers. An attempt is made to collect information for layer and egg estimates from each known contractor and independent producer who has over 30,000 table egg layers. Coverage for operations with less than 30,000 table egg layers are estimated each month based on data reported in December. Approximately 900 contractors, independent egg producers, and started pullet operations are contacted each month. All known hatcheries, approximately 330, are contacted for information on a weekly and/or monthly basis.

Revisions: The previous month's estimates are subject to revision if late reports or corrected data indicates a different level. Additionally, revisions needed after the monthly report will be made at the end of the marketing year and published in the annual summaries of "**Chickens and Eggs Summary**" and "**Hatchery Production**".

Procedures and Reliability: Operations are mailed a questionnaire and given adequate time to respond by mail. Those that do not respond are phoned. Great care is exercised to ensure that all operations are accounted for during each survey period. However, there are usually missing reports that must be accounted for in the estimates.

Sound statistical methodology is employed to derive estimates from the reported data. All data are checked for unusual values. All operations' data are compared to their own past operating profiles and also to trends from other operations. Data for missing operations are estimated based on similar operations or historical data. Survey data are subject to non-sampling errors such as omissions and mistakes in reporting and in processing. While these errors cannot be measured directly, they are minimized by reviewing all data for consistency and reasonableness.

Egg-type chicks hatched are comprised of all chicks of egg-type domesticated breeds including males and chicks destined for hatchery supply flocks and research purposes. The relationship of chicks hatched to chicken inventory and poultry marketings is carefully monitored. The disposition of egg-type chicks hatched prior to placement into the laying flock can vary significantly, which can make comparisons to changes in layer inventory inconsistent over time.

Intended placement data reported by leading breeders include pullet chicks expected from eggs sold the preceding month. The breeders in this report account for a large percentage of replacement pullets for hatchery supply flocks. Production of replacement pullets by these breeders indicates the number of pullets available to hatchery supply flocks several months before the pullets will actually move into the flocks. "Hatchery Supply Flocks" include all generations of layers which could lay eggs to supply a hatchery. This includes the generations of parents, grandparents, great-grandparents, pedigree, etc. Also included are research flocks, vaccine flocks, and specific pathogen-free flocks. The broiler cumulative potential placements are a moving total of the intended placements 7-15 months earlier. The egg-type cumulative potential placements of 7-18 months represent the first laying cycle. Molting and additional laying cycles will increase the cumulative potential placements of egg-type hatching flocks.

ACCESS TO REPORTS!!

For your convenience, there are several ways to obtain NASS reports, data products, and services:

INTERNET ACCESS

All NASS reports are available free of charge on the worldwide Internet. For access, connect to the Internet and go to the NASS Home Page at: www.usda.gov/nass/. Select "Today's Reports" or Publications and then Reports Calendar or Publications and then Search, by Title or Subject.

E-MAIL SUBSCRIPTION

All NASS reports are available by subscription free of charge direct to your e-mail address. Starting with the NASS Home Page at www.usda.gov/nass/, click on **Publications**, then click on the **Subscribe by E-mail** button which takes you to the page describing e-mail delivery of reports. Finally, click on **Go to the Subscription Page** and follow the instructions.

PRINTED REPORTS OR DATA PRODUCTS

CALL OUR TOLL-FREE ORDER DESK: 800-999-6779 (U.S. and Canada)
Other areas, please call 703-605-6220 FAX: 703-605-6900
(Visa, MasterCard, check, or money order acceptable for payment.)

ASSISTANCE

For **assistance** with general agricultural statistics or further information about NASS or its products or services, contact the **Agricultural Statistics Hotline** at **800-727-9540**, 7:30 a.m. to 4:00 p.m. ET, or e-mail: nass@nass.usda.gov.

The United States Department of Agriculture (USDA) prohibits discrimination in all its programs on the basis of race, color, national origin, gender, religion, age, disability, political beliefs, sexual orientation, and marital or family status. (Not all prohibited bases apply to all programs.) Persons with disabilities who require alternative means for communication of program information (braille, large print, audiotape, etc.) should contact the USDA's TARGET Center at 202-720-2600 (voice and TDD).

To file a complaint of discrimination, write USDA, Director, Office of Civil Rights, Room 326-W, Whitten Building, 1400 Independence Avenue, SW, Washington, D.C., 20250-9410, or call 202-720-5964 (voice or TDD). USDA is an equal opportunity provider and employer.