

Released April 22, 2005, by the National Agricultural Statistics Service (NASS), Agricultural Statistics Board, U.S. Department of Agriculture. For information on *Chickens and Eggs* call Sharyn Lavender at (202) 720-3244, for "Hatch" call Jody Roberts at (202) 690-8632, office hours 7:30 a.m. to 4:00 p.m. ET.

## March Egg Production Up 2 Percent

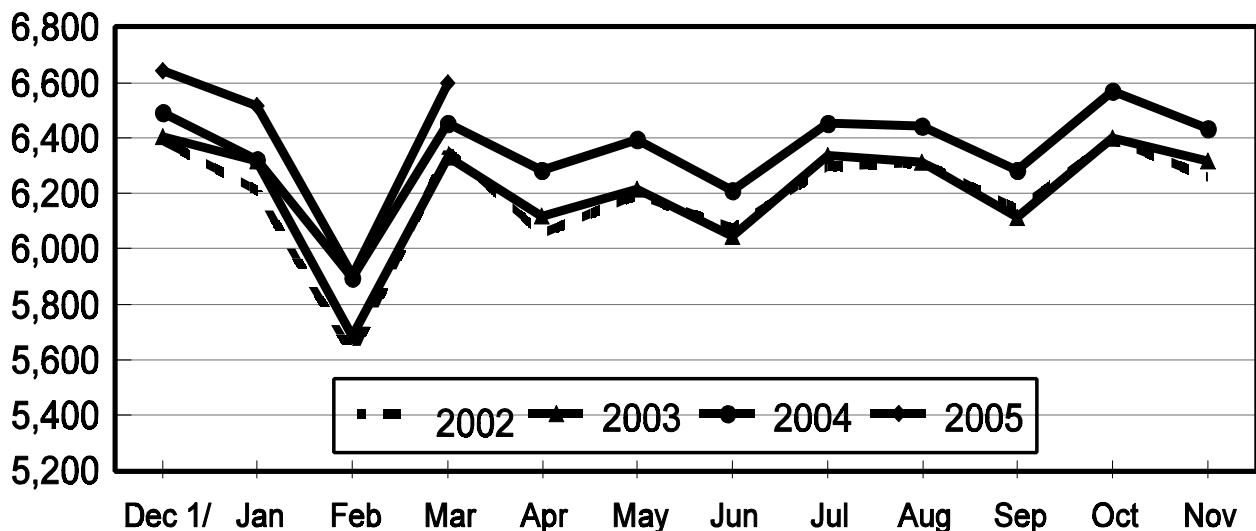
U.S. egg production totaled 7.73 billion during March 2005, up 2 percent from last year. Production included 6.60 billion table eggs, and 1.13 billion hatching eggs, of which 1.07 billion were broiler-type and 63 million were egg-type. The total number of layers during March 2005 averaged 347 million, up 2 percent from a year earlier. March egg production per 100 layers was 2,225 eggs, up 1 percent from March 2004.

All layers in the U.S. on April 1, 2005, totaled 345 million, up 1 percent from a year ago. The 345 million layers consisted of 286 million layers producing table or market type eggs, 56.9 million layers producing broiler-type hatching eggs, and 2.63 million layers producing egg-type hatching eggs. Rate of lay per day on April 1, 2005, averaged 71.8 eggs per 100 layers, down slightly from a year ago.

February 2005 contained 28 days, while February 2004 contained 29 days due to the leap year.

## Table Egg Production United States, 2002 - 2005 During the Month

Million Eggs



1/ Previous Year

### **Egg-Type Chicks Hatched Up 6 Percent**

Egg-type chicks hatched during March totaled 40.0 million, up 6 percent from March 2004. Eggs in incubators totaled 34.1 million on April 1, 2005, up 2 percent from a year ago.

Domestic placements of egg-type pullet chicks for future hatchery supply flocks by leading breeders totaled 314,000 during March 2005, down 22 percent from March 2004.

### **Broiler Hatch Up 3 Percent**

The March 2005 hatch of broiler-type chicks, at 816 million, was up 3 percent from March of the previous year. There were 658 million eggs in incubators on April 1, 2005, up 1 percent from a year earlier.

Leading breeders placed 7.08 million broiler-type pullet chicks for future domestic hatchery supply flocks during March 2005, up 4 percent from March 2004.

**All Layers: Average Number on Hand During the Month,  
United States, 2002-05**

Month	2002	2003	2004	2005
	<i>1,000 Layers</i>	<i>1,000 Layers</i>	<i>1,000 Layers</i>	<i>1,000 Layers</i>
Dec <sup>1</sup>	341,243	341,131	339,789	345,960
Jan	340,885	341,996	338,550	348,142
Feb	339,529	341,661	339,647	348,985
Mar	339,434	340,971	341,700	347,255
Apr	338,809	339,268	342,612	
May	337,566	337,356	342,786	
Jun	337,339	335,979	342,835	
Jul	337,849	335,417	342,479	
Aug	338,397	335,565	342,983	
Sep	339,511	335,426	344,118	
Oct	340,461	336,557	345,056	
Nov	340,490	339,387	344,797	

<sup>1</sup> December preceding year.

**Eggs: Production During the Month by Type,  
United States, 2004-05 <sup>1</sup>**

Month	Total Eggs		Table Eggs		Hatching Eggs	
	2004	2005	2004	2005	2004	2005
	<i>Million Eggs</i>	<i>Million Eggs</i>	<i>Million Eggs</i>	<i>Million Eggs</i>	<i>Million Eggs</i>	<i>Million Eggs</i>
Dec <sup>2</sup>	7,554	7,728	6,492	6,643	1,063	1,085
Jan	7,386	7,617	6,323	6,518	1,063	1,100
Feb	6,901	6,919	5,895	5,906	1,007	1,014
Mar	7,547	7,726	6,453	6,598	1,095	1,129
Apr	7,358		6,284		1,074	
May	7,513		6,393		1,120	
Jun	7,289		6,209		1,080	
Jul	7,557		6,455		1,102	
Aug	7,538		6,443		1,095	
Sep	7,344		6,282		1,063	
Oct	7,659		6,569		1,090	
Nov	7,482		6,435		1,047	
During Year	89,131		76,236		12,896	

<sup>1</sup> Totals may not add due to rounding.

<sup>2</sup> December preceding year.

**Layers and Eggs: Layers on Hand and Eggs Produced by Type,  
and Forced Molt, United States, February-March 2004-05<sup>1</sup>**

Item	Unit	2004	2005	2005 as % of 2004
Layers During Feb	1,000			
All Layers		339,647	348,985	103
Table Egg Type		280,347	289,436	103
Hatching Egg Type		59,300	59,549	100
Broiler-Type Hatching		56,848	56,885	100
Egg-Type Hatching		2,452	2,664	109
Eggs per 100 Layers During Feb	Number			
All Layers		2,032	1,983	98
Table Egg Type		2,103	2,041	97
Hatching Egg Type		1,698	1,703	100
Broiler-Type Hatching		1,676	1,681	100
Egg-Type Hatching		2,202	2,177	99
Eggs Produced During Feb	Million			
All Layers		6,901	6,919	100
Table Egg Type		5,895	5,906	100
Hatching Egg Type		1,007	1,014	101
Broiler-Type Hatching		953	956	100
Egg-Type Hatching		54	58	107
Layers on Mar 1	1,000			
All Layers		340,479	349,279	103
Table Egg Type		280,819	289,510	103
Hatching Egg Type		59,660	59,769	100
Broiler-Type Hatching		57,210	57,128	100
Egg-Type Hatching		2,450	2,641	108
Eggs per 100 Layers on Mar 1	Number			
All Layers		70.4	71.6	102
Table Egg Type		72.9	73.9	101
Hatching Egg Type		59.0	60.5	103
Broiler-Type Hatching		58.3	59.8	103
Egg-Type Hatching		75.0	77.4	103
Forced Molt Layers on Mar 1	Percent			
Percent Being Molted		4.6	3.0	65
Percent with Molt Completed		23.4	22.8	97
Layers Sold for Slaughter During Feb	1,000	14,749	14,390	98
Layers Rendered, Died, Destroyed, Composted or Disappeared For Any Reason During Feb	1,000	7,857	7,188	91
Pullets on Mar 1	1,000	96,903	100,933	104
Pullets Added During Feb <sup>2</sup>	1,000	21,785	23,895	110

<sup>1</sup> Totals may not add due to rounding.

<sup>2</sup> Pullet chicks less than 3 days old added to pullet flocks.

**Layers and Eggs: Layers on Hand and Eggs Produced by Type,  
and Forced Molt, United States, March-April 2004-05 <sup>1</sup>**

Item	Unit	2004	2005	2005 as % of 2004
Layers During Mar	1,000			
All Layers		341,700	347,255	102
Table Egg Type		282,106	287,581	102
Hatching Egg Type		59,594	59,674	100
Broiler-Type Hatching		57,127	57,037	100
Egg-Type Hatching		2,467	2,637	107
Eggs per 100 Layers During Mar	Number			
All Layers		2,209	2,225	101
Table Egg Type		2,287	2,294	100
Hatching Egg Type		1,837	1,892	103
Broiler-Type Hatching		1,815	1,869	103
Egg-Type Hatching		2,351	2,389	102
Eggs Produced During Mar	Million			
All Layers		7,547	7,726	102
Table Egg Type		6,453	6,598	102
Hatching Egg Type		1,095	1,129	103
Broiler-Type Hatching		1,037	1,066	103
Egg-Type Hatching		58	63	109
Layers on Apr 1	1,000			
All Layers		342,879	345,188	101
Table Egg Type		283,374	285,625	101
Hatching Egg Type		59,505	59,563	100
Broiler-Type Hatching		57,030	56,935	100
Egg-Type Hatching		2,475	2,628	106
Eggs per 100 Layers on Apr 1	Number			
All Layers		72.0	71.8	100
Table Egg Type		74.6	74.0	99
Hatching Egg Type		59.4	61.1	103
Broiler-Type Hatching		58.7	60.3	103
Egg-Type Hatching		76.3	77.7	102
Forced Molt Layers on Apr 1	Percent			
Percent Being Molted		2.6	4.1	158
Percent with Molt Completed		23.4	22.6	97
Layers Sold for Slaughter During Mar	1,000	12,326	17,498	142
Layers Rendered, Died, Destroyed, Composted or Disappeared For Any Reason During Mar	1,000	8,306	8,807	106
Pullets on Apr 1	1,000	96,938	102,243	105
Pullets Added During Mar <sup>2</sup>	1,000	22,981	24,710	108

<sup>1</sup> Totals may not add due to rounding.

<sup>2</sup> Pullet chicks less than 3 days old added to pullet flocks.

**Layers and Eggs: Layers on Hand and Eggs Produced by State  
and United States, During February 2004-05**

State	Table Egg Layers in Flocks 30,000 and Above		All Layers <sup>1</sup>		Eggs per 100 for All Layers <sup>1</sup>	
	2004	2005	2004	2005	2004	2005
	<i>1,000</i>	<i>1,000</i>	<i>1,000</i>	<i>1,000</i>	<i>Number</i>	<i>Number</i>
AL	1,935	1,868	9,190	9,232	1,752	1,787
AR	4,820	4,418	15,869	15,099	1,758	1,729
CA	19,940	20,048	20,416	20,546	2,077	2,020
CO	3,527	3,278	3,998	3,813	2,126	2,151
CT	2,811	2,936	2,865	2,996	2,234	2,203
FL	10,763	9,960	11,275	10,465	2,146	2,121
GA	11,285	11,204	20,567	20,628	1,940	1,895
HI	462	464	501	500	1,856	1,880
IL	3,651	4,226	3,871	4,456	1,989	1,997
IN	22,330	22,814	23,084	23,545	2,071	2,005
IA	39,770	49,082	40,453	49,860	2,158	2,006
ME	3,948	2,675	3,993	2,733	2,079	951
MD	3,007	2,981	3,100	3,088	2,129	2,073
MI	7,162	7,606	7,424	7,869	2,020	2,033
MN	10,540	10,488	11,123	11,023	2,113	2,087
MS	1,862	1,611	7,066	7,132	1,797	1,753
MO	5,806	6,124	7,166	7,415	2,107	1,996
NE	11,764	12,018	11,839	12,093	2,145	2,018
NY	3,659	3,852	4,020	4,177	2,313	2,179
NC	3,341	3,339	10,894	10,948	1,781	1,790
OH	26,687	27,641	27,109	28,129	1,999	1,984
OK	1,942	1,836	4,118	3,958	1,821	1,769
OR	2,878	2,677	3,054	2,843	2,096	2,040
PA	22,165	22,713	23,938	24,455	2,168	2,135
SC	4,140	4,041	5,266	5,138	1,994	2,044
SD	3,136	3,027	3,336	3,127	2,158	2,111
TX	14,045	13,626	18,534	18,142	1,996	2,006
VA	1,366	1,200	3,388	3,107	1,830	1,770
WA	4,842	4,928	4,912	4,997	2,036	2,201
WI	3,890	4,537	4,412	5,040	2,131	2,103
Oth Sts <sup>2</sup>	16,786	16,262	22,866	22,431	1,985	2,002
US	274,260	283,480	339,647	348,985	2,032	1,983

<sup>1</sup> Includes all layers and eggs produced in both table egg and hatching egg flocks regardless of size.

<sup>2</sup> Not published separately to avoid disclosing data for individual operations.

**Layers and Eggs: Layers on Hand and Eggs Produced by State  
and United States, During March 2004-05**

State	Table Egg Layers in Flocks 30,000 and Above		All Layers <sup>1</sup>		Eggs per 100 for All Layers <sup>1</sup>	
	2004	2005	2004	2005	2004	2005
	<i>1,000</i>	<i>1,000</i>	<i>1,000</i>	<i>1,000</i>	<i>Number</i>	<i>Number</i>
AL	1,939	1,763	9,224	9,117	1,865	1,974
AR	4,877	4,225	16,162	14,924	1,930	1,963
CA	19,908	20,271	20,398	20,845	2,245	2,226
CO	3,432	3,257	3,950	3,770	2,304	2,440
CT	2,775	3,033	2,827	3,091	2,441	2,329
FL	10,956	10,223	11,481	10,772	2,352	2,404
GA	11,287	10,951	20,510	20,335	2,101	2,100
HI	462	471	504	506	2,083	1,996
IL	3,656	4,111	3,880	4,341	2,345	2,419
IN	22,445	22,903	23,242	23,631	2,233	2,247
IA	40,612	48,392	41,306	49,136	2,293	2,312
ME	3,959	2,915	4,002	2,975	2,299	1,076
MD	3,008	2,861	3,089	2,966	2,331	2,293
MI	7,219	7,754	7,481	8,017	2,219	2,308
MN	10,453	10,475	10,991	11,000	2,293	2,300
MS	1,841	1,629	7,004	7,133	1,956	1,977
MO	5,822	6,045	7,207	7,342	2,206	2,261
NE	11,753	11,986	11,828	12,061	2,317	2,189
NY	3,751	3,839	4,091	4,163	2,469	2,426
NC	3,350	3,296	10,939	10,997	1,956	1,973
OH	27,000	27,601	27,463	28,089	2,218	2,271
OK	1,877	1,810	4,025	3,867	1,938	1,965
OR	2,871	2,657	3,062	2,835	2,351	2,328
PA	22,304	22,630	24,063	24,399	2,352	2,398
SC	4,152	3,911	5,225	4,995	2,163	2,182
SD	3,247	2,860	3,447	2,960	2,321	2,264
TX	14,253	13,346	18,728	17,846	2,184	2,247
VA	1,303	1,325	3,335	3,339	2,009	1,887
WA	4,874	4,856	4,944	4,924	2,245	2,417
WI	3,821	4,314	4,347	4,811	2,346	2,349
Oth Sts <sup>2</sup>	16,809	15,916	22,945	22,068	2,188	2,234
US	276,016	281,626	341,700	347,255	2,209	2,225

<sup>1</sup> Includes all layers and eggs produced in both table egg and hatching egg flocks regardless of size.

<sup>2</sup> Not published separately to avoid disclosing data for individual operations.

**Egg Production: By Type, State, and United States,  
February 2004-05 <sup>1</sup>**

State	Total Production		Table Eggs <sup>2</sup>		Hatching Eggs <sup>2</sup>	
	2004	2005	2004	2005	2004	2005
	<i>Million Eggs</i>	<i>Million Eggs</i>	<i>Million Eggs</i>	<i>Million Eggs</i>	<i>Million Eggs</i>	<i>Million Eggs</i>
AL	161	165	41	40	120	125
AR	279	261	98	90	181	171
CA	424	415				
CO	85	82				
CT	64	66				
FL	242	222	232	214	10	8
GA	399	391	238	228	161	163
HI	9.3	9.4	9.3	9.4	0	0
IL	77	89	74	86	3	3
IN	478	472	467	461	11	11
IA	873	1,000				
ME	83	26				
MD	66	64	65	63	1	1
MI	150	160				
MN	235	230	227	223	8	7
MS	127	125	38	34	89	91
MO	151	148				
NE	254	244	254	244	0	0
NY	93	91				
NC	194	196	76	71	118	125
OH	542	558				
OK	75	70	42	39	33	31
OR	64	58	62	56	2	2
PA	519	522	503	507	16	15
SC	105	105	87	88	18	17
SD	72	66	72	66	0	0
TX	370	364				
VA	62	55	29	23	33	32
WA	100	110				
WI	94	106				
Oth Sts <sup>3</sup>	454	449	372	362	83	88
US	6,901	6,919	5,895	5,906	1,007	1,014

<sup>1</sup> Totals may not add due to rounding.

<sup>2</sup> Data by type of flock not shown for some States to avoid disclosing individual operations.

<sup>3</sup> Not published separately to avoid disclosing data for individual operations.



**Egg Production: By Type, State, and United States,  
March 2004-05 <sup>1</sup>**

State	Total Production		Table Eggs <sup>2</sup>		Hatching Eggs <sup>2</sup>	
	2004	2005	2004	2005	2004	2005
	<i>Million Eggs</i>	<i>Million Eggs</i>	<i>Million Eggs</i>	<i>Million Eggs</i>	<i>Million Eggs</i>	<i>Million Eggs</i>
AL	172	180	44	42	128	138
AR	312	293	111	99	201	194
CA	458	464				
CO	91	92				
CT	69	72				
FL	270	259	260	250	10	9
GA	431	427	259	248	172	179
HI	10.5	10.1	10.5	10.1	0	0
IL	91	105	88	101	3	4
IN	519	531	506	519	13	12
IA	947	1,136				
ME	92	32				
MD	72	68	71	67	1	1
MI	166	185				
MN	252	253	244	245	8	8
MS	137	141	42	37	95	104
MO	159	166				
NE	274	264	274	264	0	0
NY	101	101				
NC	214	217	80	78	134	139
OH	609	638				
OK	78	76	43	42	35	34
OR	72	66	70	64	2	2
PA	566	585	549	568	17	17
SC	113	109	94	90	19	19
SD	80	67	80	67	0	0
TX	409	401				
VA	67	63	30	26	37	37
WA	111	119				
WI	102	113				
Oth Sts <sup>3</sup>	502	493	414	397	89	97
US	7,547	7,726	6,453	6,598	1,095	1,129

<sup>1</sup> Totals may not add due to rounding.

<sup>2</sup> Data by type of flock not shown for some States to avoid disclosing individual operations.

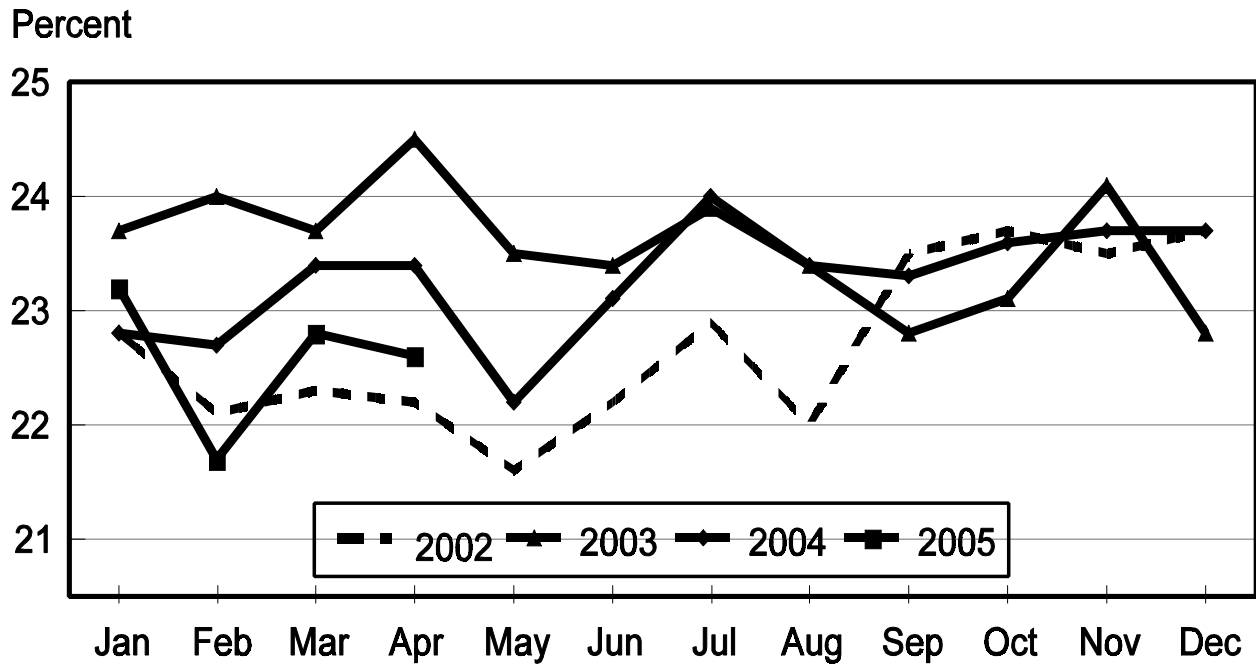
<sup>3</sup> Not published separately to avoid disclosing data for individual operations.

**Forced Molt: Percent of All Layers by Month,  
United States, 2004-05<sup>1</sup>**

Month	Percent Being Molted		Percent with Molt Completed	
	2004	2005	2004	2005
	<i>Percent</i>	<i>Percent</i>	<i>Percent</i>	<i>Percent</i>
Jan	3.9	4.1	22.8	23.2
Feb	4.9	4.6	22.7	21.7
Mar	4.6	3.0	23.4	22.8
Apr	2.6	4.1	23.4	22.6
May	4.7		22.2	
Jun	4.8		23.1	
Jul	4.6		24.0	
Aug	4.5		23.4	
Sep	4.5		23.3	
Oct	3.9		23.6	
Nov	4.2		23.7	
Dec	2.6		23.7	

<sup>1</sup> As of first of month.

**All Layers: United States  
Percent Molt Completed, 2002 - 2005  
First of the Month**



**Forced Molt: Percent of All Layers by State  
and United States, April 2004-05 <sup>1</sup>**

State	Percent Being Molted		Percent with Molt Completed	
	2004	2005	2004	2005
	<i>Percent</i>	<i>Percent</i>	<i>Percent</i>	<i>Percent</i>
AL	0.0	0.5	3.5	4.5
AR	1.0	0.5	9.0	8.5
CA	1.5	7.5	29.0	33.5
CO	1.5	3.0	19.5	27.0
CT	9.5	6.0	0.0	9.5
FL	2.0	3.0	29.5	25.0
GA	1.0	5.5	17.0	13.5
HI	7.0	8.0	45.0	41.0
IL	4.5	7.5	35.5	30.0
IN	0.0	3.0	34.0	32.0
IA	4.5	4.0	34.5	35.0
ME	0.0	0.0	0.0	0.0
MD	8.5	11.0	31.0	31.1
MI	3.0	5.0	32.0	26.5
MN	2.5	0.0	26.0	25.0
MS	0.0	2.0	11.0	9.5
MO	2.0	2.0	20.0	19.0
NE	8.0	9.0	20.5	24.5
NY	3.0	2.5	1.0	5.0
NC	0.0	0.9	8.5	8.4
OH	3.0	4.0	25.0	22.5
OK	0.0	0.0	5.5	5.0
OR	1.5	6.5	38.5	27.0
PA	2.5	3.0	19.0	15.0
SC	4.5	7.5	27.0	24.5
SD	16.5	11.5	24.5	33.5
TX	0.5	4.0	21.5	20.5
VA	0.0	8.5	13.0	2.0
WA	4.5	10.5	42.0	31.5
WI	4.0	5.5	35.0	22.5
Oth Sts <sup>2</sup>	3.0	4.1	25.5	23.6
US	2.6	4.1	23.4	22.6

<sup>1</sup> As of first of month.

<sup>2</sup> Not published separately to avoid disclosing data for individual operations.

**Hatchery Production: Eggs in Incubators, Chicks Hatched,  
and Placements by Type, United States, March-April 2004-05**

Item	2004	2005	2005 as % of 2004
	<i>1,000</i>	<i>1,000</i>	<i>Percent</i>
<b>Egg-Type</b>			
Eggs in Incubators on Apr 1	33,311	34,086	102
Chicks Hatched During Mar	37,545	39,888	106
Chicks Hatched Jan thru Mar	104,623	109,559	105
Pullets Hatched During Mar for Intended Placements in Hatchery Supply Flocks	401	314	78
7-18 Month Earlier <sup>1</sup>	2,927	3,210	110
<b>Broiler-Type</b>			
Eggs in Incubators on Apr 1	653,401	658,034	101
Chicks Hatched During Mar	791,915	815,782	103
Chicks Hatched Jan thru Mar	2,294,320	2,343,082	102
Pullets Hatched During Mar for Intended Placements in Hatchery Supply Flocks	6,815	7,077	104
7-15 Months Earlier <sup>2</sup>	61,421	62,794	102

<sup>1</sup> 2005 includes pullet chicks hatched Sep 2003 through Aug 2004.

<sup>2</sup> 2005 includes pullet chicks hatched Dec 2003 through Aug 2004.

**Egg-Type Eggs in Incubators: By Region and United States,  
April 1, 2004-05**

Region	2004	2005	2005 as % of 2004
	<i>1,000</i>	<i>1,000</i>	<i>Percent</i>
North Atlantic	5,916	5,835	99
E North Central	7,031	6,913	98
W North Central	7,469	7,149	96
South Atlantic	2,464	4,207	171
South Central	5,684	4,958	87
West	4,747	5,024	106
<b>US</b>	<b>33,311</b>	<b>34,086</b>	<b>102</b>

**Regions:**

North Atlantic = CT, ME, MA, NH, NJ, NY, PA, RI, VT.

E North Central = IL, IN, MI, OH, WI.

W North Central = IA, KS, MN, MO, NE, ND, SD.

South Atlantic = DE, FL, GA, MD, NC, SC, VA, WV.

South Central = AL, AR, KY, LA, MS, OK, TN, TX.

West = AK, AZ, CA, CO, HI, ID, MT, NM, NV, OR, UT, WA, WY.

**Egg-Type Chicks Hatched: By State and United States,  
March 2004-05**

State	March			Jan-Mar		
	2004	2005	2005 as % of 2004	2004	2005	2005 as % of 2004
	<i>1,000</i>	<i>1,000</i>	<i>Percent</i>	<i>1,000</i>	<i>1,000</i>	<i>Percent</i>
FL	608	656	108	1,932	2,212	114
GA	2,385	2,394	100	7,231	6,888	95
IN	5,144	4,949	96	14,949	15,019	100
IA	6,730	7,143	106	18,373	17,974	98
MN	809	1,198	148	3,031	2,834	94
PA	5,261	5,201	99	15,045	15,809	105
Oth Sts <sup>1</sup>	16,608	18,347	115	44,062	48,823	111
US	37,545	39,888	106	104,623	109,559	105

<sup>1</sup> Not published separately to avoid disclosing data for individual operations.

**Egg-Type Chicks Hatched: By Month, United States, 2003-05**

Month	By Months				Cumulative			
	2003	2004	2005	2005 as % of 2004	2003	2004	2005	2005 as % of 2004
	<i>1,000</i>	<i>1,000</i>	<i>1,000</i>	<i>Percent</i>	<i>1,000</i>	<i>1,000</i>	<i>1,000</i>	<i>Percent</i>
Jan	33,521	35,155	36,761	105	33,521	35,155	36,761	105
Feb	30,474	31,923	32,910	103	63,995	67,078	69,671	104
Mar	36,775	37,545	39,888	106	100,770	104,623	109,559	105
Apr	37,820	37,466			138,590	142,089		
May	37,630	38,347			176,220	180,436		
Jun	36,602	37,508			212,822	217,944		
Jul	35,578	34,919			248,400	252,863		
Aug	33,199	36,854			281,599	289,717		
Sep	35,763	36,631			317,362	326,348		
Oct	34,812	34,866			352,174	361,214		
Nov	30,241	38,758			382,415	399,972		
Dec	33,588	37,332			416,003	437,304		

**Intended Placements: Egg-Type Pullet Chicks for Hatchery Supply  
Flocks by Month and Total, United States, 2003-05<sup>1</sup>**

Month	Pullet Chicks Hatched			2005 as % of 2004	Cumulative Potential Placements Relative to Current Supply Flocks 7-18 Months Earlier <sup>2</sup>		
	2003	2004	2005		2003	2004	2005
	<i>1,000</i>	<i>1,000</i>	<i>1,000</i>	<i>Percent</i>	<i>1,000</i>	<i>1,000</i>	<i>1,000</i>
Jan	210	124	157	127	2,974	3,012	3,088
Feb	225	285	208	73	2,916	2,960	3,080
Mar	319	401	314	78	2,886	2,927	3,210
Apr	280	343			2,944	2,923	3,142
May	289	157			2,980	3,047	3,100
Jun	309	212			2,946	3,139	3,006
Jul	230	222			2,927	3,198	2,995
Aug	188	318			2,909	3,112	3,028
Sep	273	205			2,887	3,172	2,951
Oct	310	268			2,969	3,254	2,864
Nov	319	225			2,954	3,317	
Dec	246	235			2,924	3,185	
Total	3,198	2,995					

<sup>1</sup> Reported by leading breeders. Coverage may not be 100 percent. Includes expected pullet chicks from eggs sold during the preceding month at the rate of 125 pullet chicks per 30 dozen case of eggs.

<sup>2</sup> For March 2005, includes breeder pullet chicks hatched Sep 2003 through Aug 2004. The 7-18 months represent the first laying cycle. Molting and additional laying cycles will increase the cumulative potential placements.

**Broiler-Type Eggs in Incubators: By Region  
and United States, April 1, 2004-05**

Region	2004	2005	2005 as % of 2004
	<i>1,000</i>	<i>1,000</i>	<i>Percent</i>
North Atlantic	12,451	12,019	97
E North Central	8,111	9,148	113
W North Central	24,354	23,075	95
South Atlantic	233,807	239,022	102
South Central	349,367	348,250	100
West	25,311	26,520	105
US	653,401	658,034	101

**Broiler-Type Chicks Hatched: By State  
and United States, March 2004-05**

State	March			Jan-Mar		
	2004	2005	2005 as % of 2004	2004	2005	2005 as % of 2004
	<i>1,000</i>	<i>1,000</i>	<i>Percent</i>	<i>1,000</i>	<i>1,000</i>	<i>Percent</i>
AL	111,008	113,313	102	321,824	322,834	100
AR	113,525	115,942	102	332,302	334,436	101
DE	14,035	14,897	106	40,354	42,603	106
FL	4,939	4,947	100	14,548	14,284	98
GA	121,592	123,271	101	355,395	358,760	101
KY	26,042	26,823	103	72,935	75,805	104
LA	13,873	15,018	108	39,822	43,125	108
MD	31,379	32,238	103	92,820	92,160	99
MS	72,111	73,387	102	210,707	213,092	101
NC	67,532	68,661	102	192,410	195,446	102
OK	23,805	23,882	100	67,471	69,271	103
PA	13,039	14,870	114	37,684	41,989	111
SC	13,287	19,051	143	38,791	53,049	137
TX	54,822	56,850	104	158,204	161,364	102
VA	23,684	23,751	100	68,461	68,823	101
CA, MO, TN, & WV	65,105	67,582	104	184,924	192,971	104
19 Sts <sup>1</sup>	769,778	794,483	103	2,228,652	2,280,012	102
Oth Sts <sup>2</sup>	22,137	21,299	96	65,668	63,070	96
US	791,915	815,782	103	2,294,320	2,343,082	102

<sup>1</sup> States in the weekly hatchery production estimating program.

<sup>2</sup> Not published separately to avoid disclosing data for individual operations.

**Broiler-Type Chicks Hatched: By Month, United States, 2003-05**

Month	By Months				Cumulative			
	2003	2004	2005	2005 as % of 2004	2003	2004	2005	2005 as % of 2004
	<i>1,000</i>	<i>1,000</i>	<i>1,000</i>	<i>Percent</i>	<i>1,000</i>	<i>1,000</i>	<i>1,000</i>	<i>Percent</i>
Jan	759,674	774,004	796,026	103	759,674	774,004	796,026	103
Feb	693,549	728,401	731,274	100	1,453,223	1,502,405	1,527,300	102
Mar	774,354	791,915	815,782	103	2,227,577	2,294,320	2,343,082	102
Apr	760,638	774,629			2,988,215	3,068,949		
May	792,813	810,484			3,781,028	3,879,433		
Jun	774,679	786,603			4,555,707	4,666,036		
Jul	777,838	806,658			5,333,545	5,472,694		
Aug	784,107	810,285			6,117,652	6,282,979		
Sep	739,515	769,934			6,857,167	7,052,913		
Oct	735,235	756,895			7,592,402	7,809,808		
Nov	707,891	730,353			8,300,293	8,540,161		
Dec	780,321	793,090			9,080,614	9,333,251		

**Intended Placements: Broiler-Type Pullet Chicks for Hatchery  
Supply Flocks by Month and Total, 2003-05 <sup>1</sup>**

Month	Pullet Chicks Hatched			2005 as % of 2004	Cumulative Potential Placements Relative to Current Supply Flocks 7-15 Months Earlier <sup>2</sup>		
	2003	2004	2005		2003	2004	2005
	<i>1,000</i>	<i>1,000</i>	<i>1,000</i>	<i>Percent</i>	<i>1,000</i>	<i>1,000</i>	<i>1,000</i>
US Place- ments							
Jan	6,269	6,811	6,409	94	62,473	60,300	62,084
Feb	6,659	7,340	7,325	100	62,371	61,106	62,460
Mar	6,888	6,815	7,077	104	62,559	61,421	62,794
Apr	6,735	6,402			62,658	61,600	63,574
May	7,323	7,590			62,659	61,643	63,220
Jun	6,748	6,890			62,322	61,930	63,008
Jul	7,071	6,688			62,022	62,020	62,965
Aug	7,253	7,280			61,477	62,096	62,972
Sep	6,654	7,758			60,539	62,113	62,707
Oct	6,312	6,457			60,221	62,180	62,894
Nov	6,946	7,128			60,354	61,511	
Dec	6,978	6,772			60,228	61,848	
Annual Total	81,836	83,931					
Total Place- ments <sup>3</sup>							
Jan	7,388	7,812	7,804	100			
Feb	8,094	8,251	8,664	105			
Mar	8,400	7,801	8,709	112			
Apr	8,062	7,288					
May	8,604	8,693					
Jun	8,341	8,590					
Jul	8,555	8,003					
Aug	8,608	8,416					
Sep	8,338	9,184					
Oct	7,695	7,678					
Nov	8,246	8,411					
Dec	8,185	8,263					
Annual Total	98,516	98,390					

<sup>1</sup> Reported by leading breeders. Coverage may not be 100 percent. Includes expected pullet chicks from eggs sold during the preceding month at the rate of 125 pullet chicks per 30 dozen case of eggs.

<sup>2</sup> For Mar 2005, includes breeder pullet chicks hatched Dec 2003 through Aug 2004.

<sup>3</sup> U.S. production of intended placements worldwide.



## Procedures and Reliability

**Data Sources:** Primary data for the "**Chickens and Eggs**" report are from weekly and/or monthly questionnaires sent to producers. An attempt is made to collect information for layer and egg estimates from each known contractor and independent producer who has over 30,000 table egg layers. Coverage for operations with less than 30,000 table egg layers are estimated each month based on data reported in December. Approximately 900 contractors, independent egg producers, and started pullet operations are contacted each month. All known hatcheries, approximately 330, are contacted for information on a weekly and/or monthly basis.

**Revisions:** The previous month's estimates are subject to revision if late reports or corrected data indicates a different level. Additionally, revisions needed after the monthly report will be made at the end of the marketing year and published in the annual summaries of "**Chickens and Eggs Summary**" and "**Hatchery Production**".

**Procedures and Reliability:** Operations are mailed a questionnaire and given adequate time to respond by mail. Those that do not respond are phoned. Great care is exercised to ensure that all operations are accounted for during each survey period. However, there are usually missing reports that must be accounted for in the estimates.

Sound statistical methodology is employed to derive estimates from the reported data. All data are checked for unusual values. All operations' data are compared to their own past operating profiles and also to trends from other operations. Data for missing operations are estimated based on similar operations or historical data. Survey data are subject to non-sampling errors such as omissions and mistakes in reporting and in processing. While these errors cannot be measured directly, they are minimized by reviewing all data for consistency and reasonableness.

Egg-type chicks hatched are comprised of all chicks of egg-type domesticated breeds including males and chicks destined for hatchery supply flocks and research purposes. The relationship of chicks hatched to chicken inventory and poultry marketings is carefully monitored. The disposition of egg-type chicks hatched prior to placement into the laying flock can vary significantly, which can make comparisons to changes in layer inventory inconsistent over time.

Intended placement data reported by leading breeders include pullet chicks expected from eggs sold the preceding month. The breeders in this report account for a large percentage of replacement pullets for hatchery supply flocks. Production of replacement pullets by these breeders indicates the number of pullets available to hatchery supply flocks several months before the pullets will actually move into the flocks. "Hatchery Supply Flocks" include all generations of layers which could lay eggs to supply a hatchery. This includes the generations of parents, grandparents, great-grandparents, pedigree, etc. Also included are research flocks, vaccine flocks, and specific pathogen-free flocks. The broiler cumulative potential placements are a moving total of the intended placements 7-15 months earlier. The egg-type cumulative potential placements of 7-18 months represent the first laying cycle. Molting and additional laying cycles will increase the cumulative potential placements of egg-type hatching flocks.

## ACCESS TO REPORTS!!

---

For your convenience, there are several ways to obtain NASS reports, data products, and services:

### INTERNET ACCESS

All NASS reports are available free of charge on the worldwide Internet. For access, connect to the Internet and go to the NASS Home Page at [www.usda.gov/nass/](http://www.usda.gov/nass/). Select "Today's Reports" or Publications and then Reports Calendar or Publications and then Search, by Title or Subject.

### E-MAIL SUBSCRIPTION

All NASS reports are available by subscription free of charge direct to your e-mail address. Starting with the NASS Home Page at [www.usda.gov/nass/](http://www.usda.gov/nass/), click on **Publications**, then click on the **Subscribe by E-mail** button which takes you to the page describing e-mail delivery of reports. Finally, click on **Go to the Subscription Page** and follow the instructions.

-----

### PRINTED REPORTS OR DATA PRODUCTS

**CALL OUR TOLL-FREE ORDER DESK: 800-999-6779 (U.S. and Canada)**  
**Other areas, please call 703-605-6220      FAX: 703-605-6900**  
**(Visa, MasterCard, check, or money order acceptable for payment.)**

-----

### ASSISTANCE

For **assistance** with general agricultural statistics or further information about NASS or its products or services, contact the **Agricultural Statistics Hotline** at **800-727-9540**, 7:30 a.m. to 4:00 p.m. ET, or e-mail: [nass@nass.usda.gov](mailto:nass@nass.usda.gov).

The U.S. Department of Agriculture (USDA) prohibits discrimination in all its programs and activities on the basis of race, color, national origin, sex, religion, age, disability, political beliefs, sexual orientation, and marital or family status. (Not all prohibited bases apply to all programs.) Persons with disabilities who require alternative means for communication of program information (Braille, large print, audiotape, etc.) should contact USDA's TARGET Center at 202-720-2600 (voice and TDD).

To file a complaint of discrimination, write USDA, Director, Office of Civil Rights, Room 326-W, Whitten Building, 14th and Independence Avenue, SW, Washington, DC 20250-9410 or call 202-720-5964 (voice and TDD). USDA is an equal opportunity provider and employer.