

Released June 21, 2005, by the National Agricultural Statistics Service (NASS), Agricultural Statistics Board, U.S. Department of Agriculture. For information on *Chickens and Eggs* call Sharyn Lavender at (202) 720-3244, for "Hatch" call Jody Roberts at (202) 690-8632, office hours 7:30 a.m. to 4:00 p.m. ET.

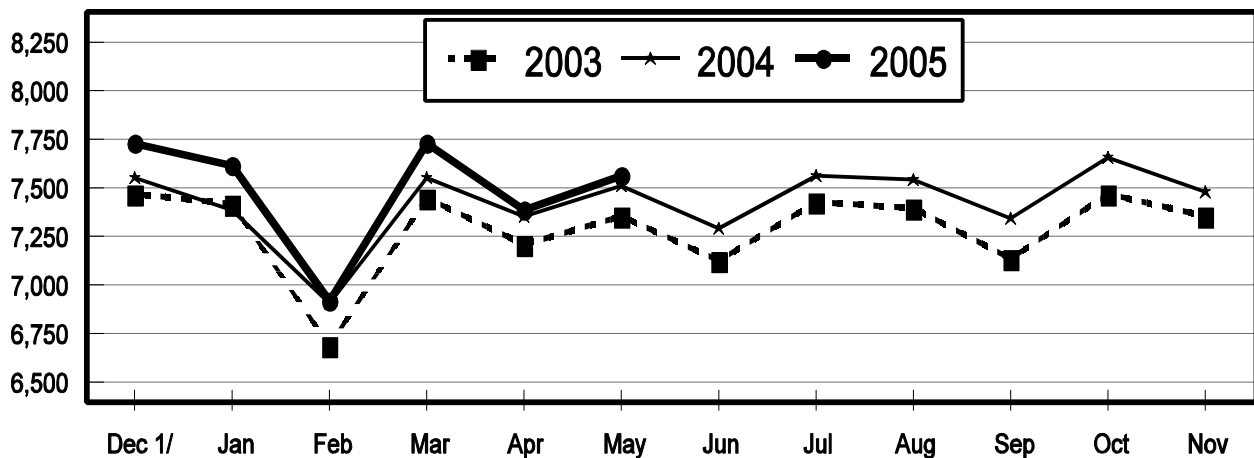
May Egg Production Up 1 Percent

U.S. egg production totaled 7.56 billion during May 2005, up one percent from last year. Production included 6.43 billion table eggs, and 1.13 billion hatching eggs, of which 1.07 billion were broiler-type and 65 million were egg-type. The total number of layers during May 2005 averaged 342 million, down slightly from a year earlier. May egg production per 100 layers was 2,210 eggs, up one percent from May 2004.

All layers in the U.S. on June 1, 2005, totaled 342 million, down one percent from a year ago. The 342 million layers consisted of 282 million layers producing table or market type eggs, 56.8 million layers producing broiler-type hatching eggs, and 2.70 million layers producing egg-type hatching eggs. Rate of lay per day on June 1, 2005, averaged 71.3 eggs per 100 layers, up 1 percent from a year ago.

All Egg Production United States, 2003 - 2005 During the Month

Million Eggs



1/ Previous Year

Egg-Type Chicks Hatched Down 2 Percent

Egg-type chicks hatched during May 2005 totaled 37.4 million, down 2 percent from May 2004. Eggs in incubators totaled 33.2 million on June 1, 2005, down 4 percent from a year ago.

Domestic placements of egg-type pullet chicks for future hatchery supply flocks by leading breeders totaled 190,000 during May 2005, up 21 percent from May 2004.

Broiler Hatch Up 2 Percent

Broiler-type chicks hatched during May 2005 totaled 823 million, up 2 percent from May 2004. Eggs in incubators totaled 667 million on June 1, 2005, up 1 percent from a year earlier.

Leading breeders placed 7.78 million broiler-type pullet chicks for future domestic hatchery supply flocks during May 2005, up 3 percent from May 2004.

**All Layers: Average Number on Hand During the Month,
United States, 2002-05**

Month	2002	2003	2004	2005
	<i>1,000 Layers</i>	<i>1,000 Layers</i>	<i>1,000 Layers</i>	<i>1,000 Layers</i>
Dec ¹	341,243	341,131	339,789	345,960
Jan	340,885	341,996	338,550	348,142
Feb	339,529	341,661	339,647	348,985
Mar	339,434	340,971	341,700	347,272
Apr	338,809	339,268	342,612	344,041
May	337,566	337,356	342,786	342,190
Jun	337,339	335,979	342,835	
Jul	337,849	335,417	342,479	
Aug	338,397	335,565	342,983	
Sep	339,511	335,426	344,118	
Oct	340,461	336,557	345,056	
Nov	340,490	339,387	344,797	

¹ December preceding year.

**Eggs: Production During the Month by Type,
United States, 2004-05 ¹**

Month	Total Eggs		Table Eggs		Hatching Eggs	
	2004	2005	2004	2005	2004	2005
	<i>Million Eggs</i>	<i>Million Eggs</i>	<i>Million Eggs</i>	<i>Million Eggs</i>	<i>Million Eggs</i>	<i>Million Eggs</i>
Dec ²	7,554	7,728	6,492	6,643	1,063	1,085
Jan	7,386	7,617	6,323	6,518	1,063	1,100
Feb	6,901	6,919	5,895	5,906	1,007	1,014
Mar	7,547	7,727	6,453	6,599	1,095	1,129
Apr	7,358	7,384	6,284	6,288	1,074	1,097
May	7,513	7,563	6,393	6,430	1,120	1,133
Jun	7,289		6,209		1,080	
Jul	7,557		6,455		1,102	
Aug	7,538		6,443		1,095	
Sep	7,344		6,282		1,063	
Oct	7,659		6,569		1,090	
Nov	7,482		6,435		1,047	
During Year	89,131		76,236		12,896	

¹ Totals may not add due to rounding.

² December preceding year.

**Layers and Eggs: Layers on Hand and Eggs Produced by Type,
and Forced Molt, United States, April-May 2004-05 ¹**

Item	Unit	2004	2005 ²	2005 as % of 2004
Layers During Apr	1,000			
All Layers		342,612	344,041	100
Table Egg Type		282,819	284,294	101
Hatching Egg Type		59,793	59,747	100
Broiler-Type Hatching		57,304	57,092	100
Egg-Type Hatching		2,489	2,655	107
Eggs per 100 Layers During Apr	Number			
All Layers		2,148	2,146	100
Table Egg Type		2,222	2,212	100
Hatching Egg Type		1,796	1,836	102
Broiler-Type Hatching		1,771	1,811	102
Egg-Type Hatching		2,370	2,373	100
Eggs Produced During Apr	Million			
All Layers		7,358	7,384	100
Table Egg Type		6,284	6,288	100
Hatching Egg Type		1,074	1,097	102
Broiler-Type Hatching		1,015	1,034	102
Egg-Type Hatching		59	63	107
Layers on May 1	1,000			
All Layers		342,305	342,817	100
Table Egg Type		282,241	282,910	100
Hatching Egg Type		60,064	59,907	100
Broiler-Type Hatching		57,568	57,238	99
Egg-Type Hatching		2,496	2,669	107
Eggs per 100 Layers on May 1	Number			
All Layers		71.0	71.3	100
Table Egg Type		73.3	73.4	100
Hatching Egg Type		60.2	61.0	101
Broiler-Type Hatching		59.3	60.2	102
Egg-Type Hatching		79.3	80.0	101
Forced Molt Layers on May 1	Percent			
Percent Being Molted		4.7	4.0	85
Percent with Molt Completed		22.2	22.3	100
Layers Sold for Slaughter During Apr	1,000	13,762	14,425	105
Layers Rendered, Died, Destroyed, Composted or Disappeared For Any Reason During Apr	1,000	7,740	8,141	105
Pullets on May 1	1,000	99,504	104,094	105
Pullets Added During Apr ³	1,000	24,438	23,863	98

¹ Totals may not add due to rounding.

² Revised.

³ Pullet chicks less than 3 days old added to pullet flocks.

**Layers and Eggs: Layers on Hand and Eggs Produced by Type,
and Forced Molt, United States, May-June 2004-05 ¹**

Item	Unit	2004	2005	2005 as % of 2004
Layers During May	1,000			
All Layers		342,786	342,190	100
Table Egg Type		282,623	282,493	100
Hatching Egg Type		60,163	59,697	99
Broiler-Type Hatching		57,703	57,009	99
Egg-Type Hatching		2,460	2,688	109
Eggs per 100 Layers During May	Number			
All Layers		2,192	2,210	101
Table Egg Type		2,262	2,276	101
Hatching Egg Type		1,862	1,898	102
Broiler-Type Hatching		1,839	1,873	102
Egg-Type Hatching		2,398	2,418	101
Eggs Produced During May	Million			
All Layers		7,513	7,563	101
Table Egg Type		6,393	6,430	101
Hatching Egg Type		1,120	1,133	101
Broiler-Type Hatching		1,061	1,068	101
Egg-Type Hatching		59	65	110
Layers on Jun 1	1,000			
All Layers		343,233	341,512	99
Table Egg Type		282,987	282,053	100
Hatching Egg Type		60,246	59,459	99
Broiler-Type Hatching		57,828	56,763	98
Egg-Type Hatching		2,418	2,696	111
Eggs per 100 Layers on Jun 1	Number			
All Layers		70.3	71.3	101
Table Egg Type		72.6	73.3	101
Hatching Egg Type		59.6	61.4	103
Broiler-Type Hatching		58.9	60.8	103
Egg-Type Hatching		77.3	76.1	98
Forced Molt Layers on Jun 1	Percent			
Percent Being Molted		4.8	4.2	88
Percent with Molt Completed		23.1	22.8	99
Layers Sold for Slaughter During May	1,000	14,595	15,089	103
Layers Rendered, Died, Destroyed, Composted or Disappeared For Any Reason During May	1,000	7,962	7,044	88
Pullets on Jun 1	1,000	101,609	103,059	101
Pullets Added During May ²	1,000	25,205	24,356	97

¹ Totals may not add due to rounding.

² Pullet chicks less than 3 days old added to pullet flocks.

**Layers and Eggs: Layers on Hand and Eggs Produced by State
and United States, During April 2004-05**

State	Table Egg Layers in Flocks 30,000 and Above		All Layers ¹		Eggs per 100 for All Layers ¹	
	2004	2005 ²	2004	2005 ²	2004	2005 ²
	<i>1,000</i>	<i>1,000</i>	<i>1,000</i>	<i>1,000</i>	<i>Number</i>	<i>Number</i>
AL	1,985	1,625	9,327	8,999	1,833	1,867
AR	4,733	3,964	16,077	14,560	1,928	1,902
CA	19,585	19,753	20,110	20,328	2,138	2,155
CO	3,328	3,246	3,830	3,753	2,376	2,371
CT	2,801	3,095	2,855	3,153	2,382	2,188
FL	10,942	10,335	11,456	10,839	2,322	2,325
GA	11,065	10,318	20,233	19,656	2,031	2,015
HI	465	471	505	504	2,040	1,865
IL	3,607	3,985	3,829	4,217	2,246	2,276
IN	22,716	22,914	23,512	23,635	2,203	2,171
IA	42,056	48,300	42,730	49,038	2,183	2,249
ME	3,970	3,112	4,010	3,173	2,294	1,072
MD	3,000	2,821	3,093	2,926	2,231	2,153
MI	7,135	7,690	7,397	7,954	2,258	2,213
MN	10,328	10,403	10,841	10,954	2,269	2,227
MS	1,867	1,682	7,022	7,259	1,908	1,901
MO	5,715	6,012	7,055	7,328	2,112	2,197
NE	11,654	11,943	11,729	12,018	2,208	2,188
NY	3,650	3,664	3,988	3,992	2,357	2,405
NC	3,399	3,350	11,054	11,136	1,900	1,904
OH	27,384	27,494	27,874	27,978	2,174	2,234
OK	1,881	1,811	4,057	3,893	1,898	1,875
OR	2,780	2,786	2,969	2,974	2,257	2,286
PA	22,183	22,142	23,949	23,943	2,238	2,301
SC	4,131	3,863	5,161	4,955	2,073	2,018
SD	3,355	2,724	3,555	2,824	2,278	2,089
TX	14,243	12,919	18,744	17,405	2,193	2,126
VA	1,252	1,425	3,300	3,462	1,909	1,849
WA	4,831	4,835	4,901	4,903	2,244	2,223
WI	3,882	4,127	4,420	4,617	2,172	2,231
Oth Sts ³	16,808	15,532	23,029	21,665	2,128	2,146
US	276,731	278,341	342,612	344,041	2,148	2,146

¹ Includes all layers and eggs produced in both table egg and hatching egg flocks regardless of size.

² Revised.

³ Not published separately to avoid disclosing data for individual operations.

**Layers and Eggs: Layers on Hand and Eggs Produced by State
and United States, During May 2004-05**

State	Table Egg Layers in Flocks 30,000 and Above		All Layers ¹		Eggs per 100 for All Layers ¹	
	2004	2005	2004	2005	2004	2005
	<i>1,000</i>	<i>1,000</i>	<i>1,000</i>	<i>1,000</i>	<i>Number</i>	<i>Number</i>
AL	1,863	1,691	9,334	9,069	1,907	1,919
AR	4,759	3,927	16,345	14,656	1,958	1,917
CA	19,463	19,296	20,014	19,795	2,203	2,228
CO	3,376	3,220	3,876	3,761	2,348	2,393
CT	2,844	3,079	2,901	3,135	2,447	2,329
FL	10,854	10,402	11,376	10,880	2,294	2,335
GA	10,978	9,871	20,106	19,180	2,069	2,070
HI	463	454	502	486	2,032	1,934
IL	3,557	4,064	3,778	4,292	2,065	2,400
IN	22,623	22,737	23,397	23,480	2,282	2,291
IA	42,877	48,300	43,567	49,063	2,220	2,211
ME	3,970	3,031	4,010	3,096	2,369	1,130
MD	2,971	2,798	3,082	2,918	2,401	2,159
MI	7,047	7,757	7,309	8,018	2,353	2,345
MN	10,203	10,413	10,731	10,961	2,311	2,317
MS	1,827	1,651	6,969	7,225	1,923	1,979
MO	5,539	6,002	6,848	7,345	2,205	2,301
NE	11,535	11,854	11,610	11,929	2,291	2,322
NY	3,582	3,789	3,918	4,117	2,450	2,453
NC	3,394	3,270	11,030	11,008	1,967	2,008
OH	27,839	27,532	28,327	28,010	2,199	2,292
OK	1,874	1,811	4,077	3,895	1,913	1,951
OR	2,758	2,797	2,940	2,984	2,313	2,413
PA	22,321	21,612	24,082	23,418	2,300	2,387
SC	4,157	3,735	5,226	4,917	2,028	2,034
SD	3,344	2,821	3,544	2,921	2,342	2,191
TX	13,886	12,803	18,319	17,224	2,222	2,218
VA	1,272	1,420	3,327	3,336	1,894	2,128
WA	4,842	4,869	4,912	4,937	2,382	2,370
WI	3,953	4,220	4,484	4,710	2,163	2,229
Oth Sts ²	16,565	15,315	22,845	21,424	2,176	2,236
US	276,536	276,541	342,786	342,190	2,192	2,210

¹ Includes all layers and eggs produced in both table egg and hatching egg flocks regardless of size.

² Not published separately to avoid disclosing data for individual operations.

**Egg Production: By Type, State, and United States,
April 2004-05 ¹**

State	Total Production		Table Eggs ²		Hatching Eggs ²	
	2004	2005 ³	2004	2005 ³	2004	2005 ³
	<i>Million Eggs</i>	<i>Million Eggs</i>	<i>Million Eggs</i>	<i>Million Eggs</i>	<i>Million Eggs</i>	<i>Million Eggs</i>
AL	171	168	44	35	127	133
AR	310	277	112	88	198	189
CA	430	438				
CO	91	89				
CT	68	69				
FL	266	252	257	244	9	8
GA	411	396	244	222	167	174
HI	10.3	9.4	10.3	9.4	0	0
IL	86	96	83	93	3	3
IN	518	513	505	501	13	12
IA	933	1,103				
ME	92	34				
MD	69	63	68	62	1	1
MI	167	176				
MN	246	244	239	236	7	8
MS	134	138	41	36	93	102
MO	149	161				
NE	259	263	259	263	0	0
NY	94	96				
NC	210	212	80	77	130	135
OH	606	625				
OK	77	73	43	41	34	32
OR	67	68	65	66	2	2
PA	536	551	519	533	17	18
SC	107	100	89	82	18	18
SD	81	59	81	59	0	0
TX	411	370				
VA	63	64	27	28	36	36
WA	110	109				
WI	96	103				
Oth Sts ⁴	490	465	402	371	88	95
US	7,358	7,384	6,284	6,288	1,074	1,097

¹ Totals may not add due to rounding.

² Data by type of flock not shown for some States to avoid disclosing individual operations.

³ Revised.

⁴ Not published separately to avoid disclosing data for individual operations.

**Egg Production: By Type, State, and United States,
May 2004-05 ¹**

State	Total Production		Table Eggs ²		Hatching Eggs ²	
	2004	2005	2004	2005	2004	2005
	<i>Million Eggs</i>	<i>Million Eggs</i>	<i>Million Eggs</i>	<i>Million Eggs</i>	<i>Million Eggs</i>	<i>Million Eggs</i>
AL	178	174	43	35	135	139
AR	320	281	114	87	206	194
CA	441	441				
CO	91	90				
CT	71	73				
FL	261	254	251	246	10	8
GA	416	397	242	218	174	179
HI	10.2	9.4	10.2	9.4	0	0
IL	78	103	75	99	3	4
IN	534	538	521	525	13	13
IA	967	1,085				
ME	95	35				
MD	74	63	72	61	2	2
MI	172	188				
MN	248	254	240	246	8	8
MS	134	143	39	38	95	105
MO	151	169				
NE	266	277	266	277	0	0
NY	96	101				
NC	217	221	81	79	136	142
OH	623	642				
OK	78	76	44	42	34	34
OR	68	72	66	70	2	2
PA	554	559	537	541	17	18
SC	106	100	87	80	19	20
SD	83	64	83	64	0	0
TX	407	382				
VA	63	71	27	36	36	35
WA	117	117				
WI	97	105				
Oth Sts ³	497	479	400	383	97	96
US	7,513	7,563	6,393	6,430	1,120	1,133

¹ Totals may not add due to rounding.

² Data by type of flock not shown for some States to avoid disclosing individual operations.

³ Not published separately to avoid disclosing data for individual operations.

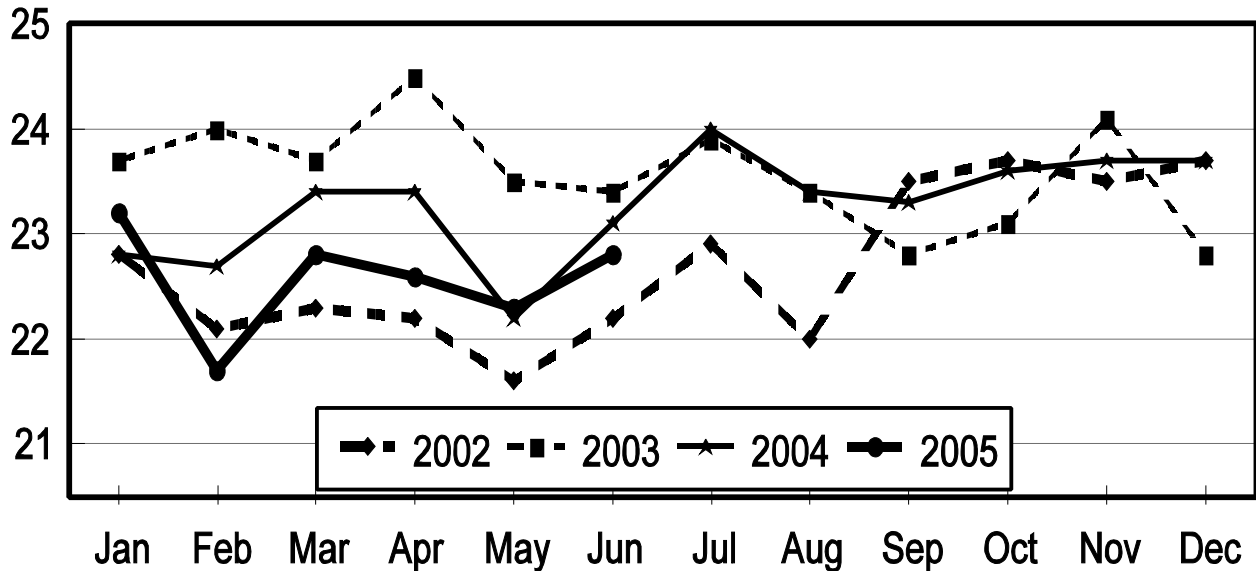
**Forced Molt: Percent of All Layers by Month,
United States, 2004-05 ¹**

Month	Percent Being Molted		Percent with Molt Completed	
	2004	2005	2004	2005
	<i>Percent</i>	<i>Percent</i>	<i>Percent</i>	<i>Percent</i>
Jan	3.9	4.1	22.8	23.2
Feb	4.9	4.6	22.7	21.7
Mar	4.6	3.0	23.4	22.8
Apr	2.6	4.1	23.4	22.6
May	4.7	4.0	22.2	22.3
Jun	4.8	4.2	23.1	22.8
Jul	4.6		24.0	
Aug	4.5		23.4	
Sep	4.5		23.3	
Oct	3.9		23.6	
Nov	4.2		23.7	
Dec	2.6		23.7	

¹ As of first of month.

**All Layers: Percent Molt Completed
United States, 2002 - 2005
First of the Month**

Percent



**Forced Molt: Percent of All Layers by State
and United States, June 2004-05¹**

State	Percent Being Molted		Percent with Molt Completed	
	2004	2005	2004	2005
	<i>Percent</i>	<i>Percent</i>	<i>Percent</i>	<i>Percent</i>
AL	1.5	2.5	2.0	2.5
AR	3.5	2.5	8.5	7.0
CA	5.5	6.0	29.0	34.5
CO	3.0	9.5	23.0	20.0
CT	5.0	0.0	9.0	9.4
FL	7.5	7.5	25.0	23.5
GA	5.5	2.5	16.5	15.0
HI	9.0	6.0	46.5	49.0
IL	16.0	8.5	37.5	26.5
IN	4.0	3.0	32.5	30.5
IA	3.5	5.5	37.5	38.0
ME	0.0	0.0	0.0	0.0
MD	16.0	8.0	12.0	32.0
MI	5.5	6.5	30.5	34.5
MN	3.0	1.0	26.0	23.5
MS	4.0	2.0	10.0	9.0
MO	3.5	2.0	18.0	21.0
NE	1.0	7.0	20.0	27.0
NY	1.5	6.0	2.5	3.0
NC	2.0	1.0	7.5	9.0
OH	4.5	3.5	26.0	20.0
OK	0.0	0.0	5.0	5.0
OR	6.5	4.0	36.0	32.0
PA	4.5	3.0	16.0	14.5
SC	5.5	8.0	30.5	22.5
SD	15.0	3.0	27.0	22.5
TX	5.5	2.0	22.0	20.5
VA	9.0	3.0	11.5	12.0
WA	6.5	9.0	46.0	34.5
WI	5.5	10.5	33.0	19.0
Oth Sts ²	8.8	5.9	22.3	23.7
US	4.8	4.2	23.1	22.8

¹ As of first of month.

² Not published separately to avoid disclosing data for individual operations.

**Hatchery Production: Eggs in Incubators, Chicks Hatched,
and Placements by Type, United States, May-June 2004-05**

Item	2004	2005	2005 as % of 2004
	<i>1,000</i>	<i>1,000</i>	<i>Percent</i>
Egg-Type			
Eggs in Incubators on Jun 1	34,678	33,179	96
Chicks Hatched During May	38,347	37,449	98
Chicks Hatched Jan thru May	180,436	189,408	105
Pullets Hatched During May for Intended Placements in Hatchery Supply Flocks	157	190	121
7-18 Month Earlier ¹	3,047	3,100	102
Broiler-Type			
Eggs in Incubators on Jun 1	661,255	667,473	101
Chicks Hatched During May	810,484	823,406	102
Chicks Hatched Jan thru May	3,879,433	3,956,268	102
Pullets Hatched During May for Intended Placements in Hatchery Supply Flocks	7,590	7,783	103
7-15 Months Earlier ²	61,643	63,220	103

¹ 2005 includes pullet chicks hatched Nov 2003 through Oct 2004.

² 2005 includes pullet chicks hatched Feb 2004 through Oct 2004.

**Egg-Type Eggs in Incubators: By Region and United States,
June 1, 2004-05**

Region	2004	2005	2005 as % of 2004
	<i>1,000</i>	<i>1,000</i>	<i>Percent</i>
North Atlantic	5,467	5,289	97
E North Central	7,510	6,686	89
W North Central	8,262	7,725	94
South Atlantic	2,447	3,493	143
South Central	4,954	5,272	106
West	6,038	4,714	78
US	34,678	33,179	96

Regions:

North Atlantic = CT, ME, MA, NH, NJ, NY, PA, RI, VT.

E North Central = IL, IN, MI, OH, WI.

W North Central = IA, KS, MN, MO, NE, ND, SD.

South Atlantic = DE, FL, GA, MD, NC, SC, VA, WV.

South Central = AL, AR, KY, LA, MS, OK, TN, TX.

West = AK, AZ, CA, CO, HI, ID, MT, NM, NV, OR, UT, WA, WY.

**Egg-Type Chicks Hatched: By State and United States,
May 2004-05**

State	During May			Jan-May		
	2004	2005	2005 as % of 2004	2004	2005	2005 as % of 2004
	<i>1,000</i>	<i>1,000</i>	<i>Percent</i>	<i>1,000</i>	<i>1,000</i>	<i>Percent</i>
FL	661	751	114	3,172	3,764	119
GA	2,377	2,315	97	11,970	11,499	96
IN	4,854	5,329	110	25,021	25,534	102
IA	5,889	6,449	110	30,558	31,843	104
MN	859	1,126	131	4,716	5,158	109
PA	5,251	4,493	86	26,413	24,898	94
Oth Sts ¹	18,456	16,986	92	78,586	86,712	110
US	38,347	37,449	98	180,436	189,408	105

¹ Not published separately to avoid disclosing data for individual operations.

Egg-Type Chicks Hatched: By Month, United States, 2003-05

Month	By Months				Cumulative			
	2003	2004	2005	2005 as % of 2004	2003	2004	2005	2005 as % of 2004
	<i>1,000</i>	<i>1,000</i>	<i>1,000</i>	<i>Percent</i>	<i>1,000</i>	<i>1,000</i>	<i>1,000</i>	<i>Percent</i>
Jan	33,521	35,155	37,936	108	33,521	35,155	37,936	108
Feb	30,474	31,923	33,932	106	63,995	67,078	71,868	107
Mar	36,775	37,545	41,824	111	100,770	104,623	113,692	109
Apr	37,820	37,466	38,267	102	138,590	142,089	151,959	107
May	37,630	38,347	37,449	98	176,220	180,436	189,408	105
Jun	36,602	37,508			212,822	217,944		
Jul	35,578	34,919			248,400	252,863		
Aug	33,199	36,854			281,599	289,717		
Sep	35,763	36,631			317,362	326,348		
Oct	34,812	34,866			352,174	361,214		
Nov	30,241	38,758			382,415	399,972		
Dec	33,588	37,332			416,003	437,304		

**Intended Placements: Egg-Type Pullet Chicks for Hatchery Supply
Flocks by Month and Total, United States, 2003-05 ¹**

Month	Pullet Chicks Hatched			2005 as % of 2004	Cumulative Potential Placements Relative to Current Supply Flocks 7-18 Months Earlier ²		
	2003	2004	2005		2003	2004	2005
	<i>1,000</i>	<i>1,000</i>	<i>1,000</i>	<i>Percent</i>	<i>1,000</i>	<i>1,000</i>	<i>1,000</i>
Jan	210	124	157	127	2,974	3,012	3,088
Feb	225	285	208	73	2,916	2,960	3,080
Mar	319	401	314	78	2,886	2,927	3,210
Apr	280	343	308	90	2,944	2,923	3,142
May	289	157	190	121	2,980	3,047	3,100
Jun	309	212			2,946	3,139	3,006
Jul	230	222			2,927	3,198	2,995
Aug	188	318			2,909	3,112	3,028
Sep	273	205			2,887	3,172	2,951
Oct	310	268			2,969	3,254	2,864
Nov	319	225			2,954	3,317	2,829
Dec	246	235			2,924	3,185	2,862
Total	3,198	2,995					

¹ Reported by leading breeders. Coverage may not be 100 percent. Includes expected pullet chicks from eggs sold during the preceding month at the rate of 125 pullet chicks per 30 dozen case of eggs.

² For May 2005, includes breeder pullet chicks hatched Nov 2003 through Oct 2004. The 7-18 months represent the first laying cycle. Molting and additional laying cycles will increase the cumulative potential placements.

**Broiler-Type Eggs in Incubators: By Region
and United States, June 1, 2004-05**

Region	2004	2005	2005 as % of 2004
	<i>1,000</i>	<i>1,000</i>	<i>Percent</i>
North Atlantic	11,835	12,143	103
E North Central	8,342	8,872	106
W North Central	25,102	24,858	99
South Atlantic	236,791	241,996	102
South Central	353,608	353,850	100
West	25,577	25,754	101
US	661,255	667,473	101

**Broiler-Type Chicks Hatched: By State
and United States, May 2004-05**

State	During May			Jan-May		
	2004	2005	2005 as % of 2004	2004	2005	2005 as % of 2004
	<i>1,000</i>	<i>1,000</i>	<i>Percent</i>	<i>1,000</i>	<i>1,000</i>	<i>Percent</i>
AL	114,021	116,323	102	544,531	549,706	101
AR	116,834	115,450	99	560,558	559,806	100
DE	13,979	14,803	106	67,660	71,928	106
FL	5,021	4,948	99	24,327	24,043	99
GA	121,611	123,890	102	592,348	600,604	101
KY	26,590	26,782	101	124,450	127,742	103
LA	14,492	15,182	105	67,923	73,161	108
MD	31,999	32,631	102	155,534	155,678	100
MS	73,182	70,896	97	354,492	355,074	100
NC	68,746	69,619	101	327,856	332,385	101
OK	24,869	24,437	98	115,939	117,133	101
PA	13,668	14,978	110	64,456	71,299	111
SC	13,817	18,780	136	65,511	90,260	138
TX	56,848	58,066	102	269,465	274,710	102
VA	24,267	24,321	100	116,492	117,003	100
CA, MO, TN, & WV	66,894	68,078	102	315,606	326,798	104
19 Sts ¹	786,838	799,184	102	3,767,148	3,847,330	102
Oth Sts ²	23,646	24,222	102	112,285	108,938	97
US	810,484	823,406	102	3,879,433	3,956,268	102

¹ States in the weekly hatchery production estimating program.

² Not published separately to avoid disclosing data for individual operations.

Broiler-Type Chicks Hatched: By Month, United States, 2003-05

Month	By Months				Cumulative			
	2003	2004	2005	2005 as % of 2004	2003	2004	2005	2005 as % of 2004
	<i>1,000</i>	<i>1,000</i>	<i>1,000</i>	<i>Percent</i>	<i>1,000</i>	<i>1,000</i>	<i>1,000</i>	<i>Percent</i>
Jan	759,674	774,004	796,026	103	759,674	774,004	796,026	103
Feb	693,549	728,401	731,274	100	1,453,223	1,502,405	1,527,300	102
Mar	774,354	791,915	815,782	103	2,227,577	2,294,320	2,343,082	102
Apr	760,638	774,629	789,780	102	2,988,215	3,068,949	3,132,862	102
May	792,813	810,484	823,406	102	3,781,028	3,879,433	3,956,268	102
Jun	774,679	786,603			4,555,707	4,666,036		
Jul	777,838	806,658			5,333,545	5,472,694		
Aug	784,107	810,285			6,117,652	6,282,979		
Sep	739,515	769,934			6,857,167	7,052,913		
Oct	735,235	756,895			7,592,402	7,809,808		
Nov	707,891	730,353			8,300,293	8,540,161		
Dec	780,321	793,090			9,080,614	9,333,251		

**Intended Placements: Broiler-Type Pullet Chicks for Hatchery
Supply Flocks by Month and Total, 2003-05 ¹**

Month	Pullet Chicks Hatched			2005 as % of 2004	Cumulative Potential Placements Relative to Current Supply Flocks 7-15 Months Earlier ²		
	2003	2004	2005		2003	2004	2005
	<i>1,000</i>	<i>1,000</i>	<i>1,000</i>	<i>Percent</i>	<i>1,000</i>	<i>1,000</i>	<i>1,000</i>
US Place- ments							
Jan	6,269	6,811	6,409	94	62,473	60,300	62,084
Feb	6,659	7,340	7,325	100	62,371	61,106	62,460
Mar	6,888	6,815	7,077	104	62,559	61,421	62,794
Apr	6,735	6,402	6,800	106	62,658	61,600	63,574
May	7,323	7,590	7,783	103	62,659	61,643	63,220
Jun	6,748	6,890			62,322	61,930	63,008
Jul	7,071	6,688			62,022	62,020	62,965
Aug	7,253	7,280			61,477	62,096	62,972
Sep	6,654	7,758			60,539	62,113	62,707
Oct	6,312	6,457			60,221	62,180	62,894
Nov	6,946	7,128			60,354	61,511	63,006
Dec	6,978	6,772			60,228	61,848	63,509
Annual Total	81,836	83,931					
Total Place- ments ³							
Jan	7,388	7,812	7,804	100			
Feb	8,094	8,251	8,664	105			
Mar	8,400	7,801	8,709	112			
Apr	8,062	7,288	7,995	110			
May	8,604	8,693	8,995	103			
Jun	8,341	8,590					
Jul	8,555	8,003					
Aug	8,608	8,416					
Sep	8,338	9,184					
Oct	7,695	7,678					
Nov	8,246	8,411					
Dec	8,185	8,263					
Annual Total	98,516	98,390					

¹ Reported by leading breeders. Coverage may not be 100 percent. Includes expected pullet chicks from eggs sold during the preceding month at the rate of 125 pullet chicks per 30 dozen case of eggs.

² For May 2005, includes breeder pullet chicks hatched Feb 2004 through Oct 2004.

³ U.S. production of intended placements worldwide.

Procedures and Reliability

Data Sources: Primary data for the "**Chickens and Eggs**" report are from weekly and/or monthly questionnaires sent to producers. An attempt is made to collect information for layer and egg estimates from each known contractor and independent producer who has over 30,000 table egg layers. Coverage for operations with less than 30,000 table egg layers are estimated each month based on data reported in December. Approximately 900 contractors, independent egg producers, and started pullet operations are contacted each month. All known hatcheries, approximately 330, are contacted for information on a weekly and/or monthly basis.

Revisions: The previous month's estimates are subject to revision if late reports or corrected data indicates a different level. Additionally, revisions needed after the monthly report will be made at the end of the marketing year and published in the annual summaries of "**Chickens and Eggs Summary**" and "**Hatchery Production**".

Procedures and Reliability: Operations are mailed a questionnaire and given adequate time to respond by mail. Those that do not respond are phoned. Great care is exercised to ensure that all operations are accounted for during each survey period. However, there are usually missing reports that must be accounted for in the estimates.

Sound statistical methodology is employed to derive estimates from the reported data. All data are checked for unusual values. All operations' data are compared to their own past operating profiles and also to trends from other operations. Data for missing operations are estimated based on similar operations or historical data. Survey data are subject to non-sampling errors such as omissions and mistakes in reporting and in processing. While these errors cannot be measured directly, they are minimized by reviewing all data for consistency and reasonableness.

Egg-type chicks hatched are comprised of all chicks of egg-type domesticated breeds including males and chicks destined for hatchery supply flocks and research purposes. The relationship of chicks hatched to chicken inventory and poultry marketings is carefully monitored. The disposition of egg-type chicks hatched prior to placement into the laying flock can vary significantly, which can make comparisons to changes in layer inventory inconsistent over time.

Intended placement data reported by leading breeders include pullet chicks expected from eggs sold the preceding month. The breeders in this report account for a large percentage of replacement pullets for hatchery supply flocks. Production of replacement pullets by these breeders indicates the number of pullets available to hatchery supply flocks several months before the pullets will actually move into the flocks. "Hatchery Supply Flocks" include all generations of layers which could lay eggs to supply a hatchery. This includes the generations of parents, grandparents, great-grandparents, pedigree, etc. Also included are research flocks, vaccine flocks, and specific pathogen-free flocks. The broiler cumulative potential placements are a moving total of the intended placements 7-15 months earlier. The egg-type cumulative potential placements of 7-18 months represent the first laying cycle. Molting and additional laying cycles will increase the cumulative potential placements of egg-type hatching flocks.

ACCESS TO REPORTS!!

For your convenience, there are several ways to obtain NASS reports, data products, and services:

INTERNET ACCESS

All NASS reports are available free of charge on the worldwide Internet. For access, connect to the Internet and go to the NASS Home Page at: www.usda.gov/nass/. Select "Today's Reports" or Publications and then Reports Calendar or Publications and then Search, by Title or Subject.

E-MAIL SUBSCRIPTION

All NASS reports are available by subscription free of charge direct to your e-mail address. Starting with the NASS Home Page at www.usda.gov/nass/, click on **Publications**, then click on the **Subscribe by E-mail** button which takes you to the page describing e-mail delivery of reports. Finally, click on **Go to the Subscription Page** and follow the instructions.

PRINTED REPORTS OR DATA PRODUCTS

CALL OUR TOLL-FREE ORDER DESK: 800-999-6779 (U.S. and Canada)
Other areas, please call 703-605-6220 FAX: 703-605-6900
(Visa, MasterCard, check, or money order acceptable for payment.)

ASSISTANCE

For **assistance** with general agricultural statistics or further information about NASS or its products or services, contact the **Agricultural Statistics Hotline** at **800-727-9540**, 7:30 a.m. to 4:00 p.m. ET, or e-mail: nass@nass.usda.gov.

The U.S. Department of Agriculture (USDA) prohibits discrimination in all its programs and activities on the basis of race, color, national origin, sex, religion, age, disability, political beliefs, sexual orientation, and marital or family status. (Not all prohibited bases apply to all programs.) Persons with disabilities who require alternative means for communication of program information (Braille, large print, audiotape, etc.) should contact USDA's TARGET Center at 202-720-2600 (voice and TDD).

To file a complaint of discrimination, write USDA, Director, Office of Civil Rights, Room 326-W, Whitten Building, 14th and Independence Avenue, SW, Washington, DC 20250-9410 or call 202-720-5964 (voice and TDD). USDA is an equal opportunity provider and employer.