
Released July 22, 2005, by the National Agricultural Statistics Service (NASS), Agricultural Statistics Board, U.S. Department of Agriculture. For information on "Layers and Eggs" call Sharyn Lavender at (202) 720-3244, for "Chicks Hatched" call Jody Roberts at (202) 690-8632, office hours 7:30 a.m. to 4:00 p.m. ET.

June Egg Production Up 1 Percent

U.S. egg production totaled 7.34 billion during June 2005, up 1 percent from last year. Production included 6.25 billion table eggs, and 1.10 billion hatching eggs, of which 1.03 billion were broiler-type and 61 million were egg-type. The total number of layers during June 2005 averaged 341 million, down slightly from a year earlier. June egg production per 100 layers was 2,151 eggs, up 1 percent from June 2004.

All layers in the U.S. on July 1, 2005, totaled 340 million, down 1 percent from a year ago. The 340 million layers consisted of 281 million layers producing table or market type eggs, 56.0 million layers producing broiler-type hatching eggs, and 2.59 million layers producing egg-type hatching eggs. Rate of lay per day on July 1, 2005, averaged 72.3 eggs per 100 layers, up 1 percent from a year ago.

Egg-Type Chicks Hatched Down 8 Percent

Egg-type chicks hatched during June 2005 totaled 34.5 million, down 8 percent from June 2004. Eggs in incubators totaled 33.0 million on July 1, 2005, down 7 percent from a year ago.

Domestic placements of egg-type pullet chicks for future hatchery supply flocks by leading breeders totaled 184,000 during June 2005, down 13 percent from June 2004.

Broiler-Type Chicks Hatched Up 1 Percent

Broiler-type chicks hatched during June 2005 totaled 796 million, up 1 percent from June 2004. Eggs in incubators totaled 658 million on July 1, 2005, down slightly from a year earlier.

Leading breeders placed 7.11 million broiler-type pullet chicks for future domestic hatchery supply flocks during June 2005, up 3 percent from June 2004.

Contents

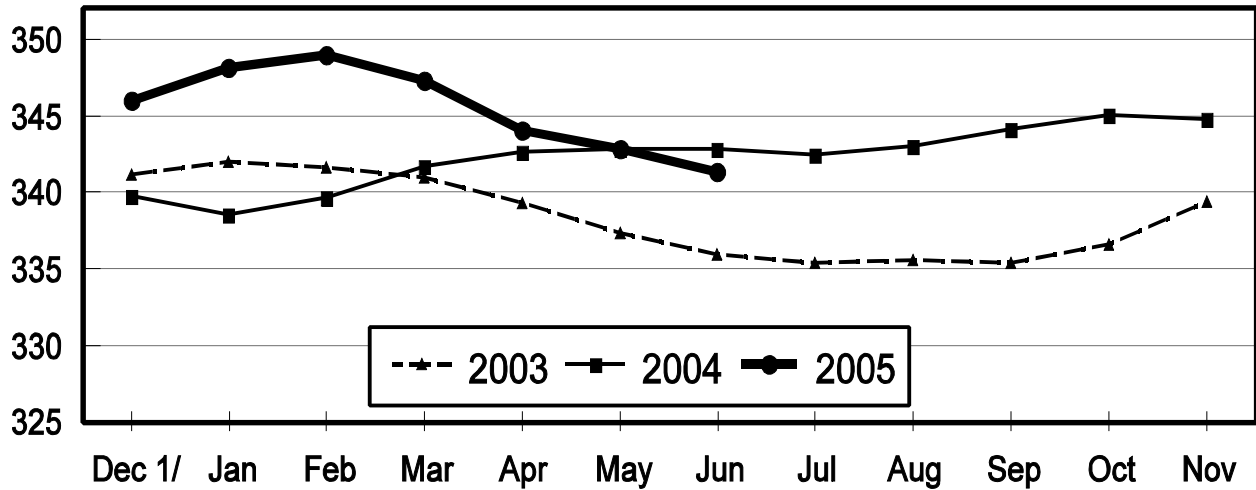
	Page
U.S. Average Layers on Hand and Egg Production	1
U.S. Layers on Hand and Egg Production by Type and Forced Molt	2
Layers on Hand and Eggs Produced by State	4
Egg Production by Type and State	6
Forced Molt	8
Egg-Type Hatchery	10
Egg-Type Intended Placements	12
Broiler-Type Hatchery	12
Broiler-Type Intended Placements	14
Procedures and Reliability	15

Average Number of Layers

United States, 2003 - 2005

During the Month

Million Layers



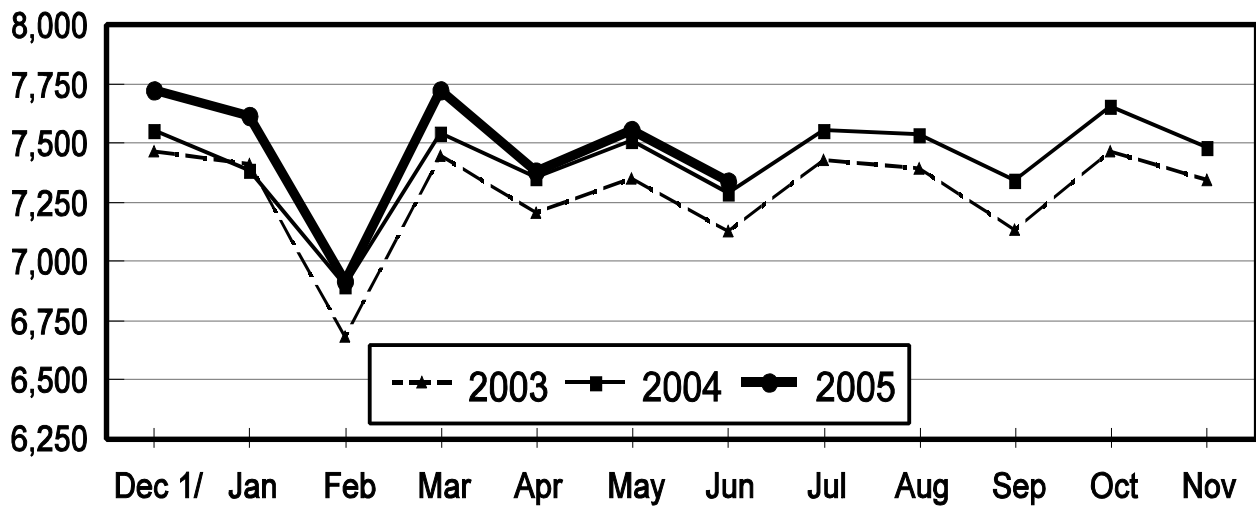
1/ Previous Year

All Egg Production

United States, 2003 - 2005

During the Month

Million Eggs



1/ Previous Year

**All Layers: Average Number on Hand During the Month,
United States, 2002-05**

Month	2002	2003	2004	2005
	<i>1,000 Layers</i>	<i>1,000 Layers</i>	<i>1,000 Layers</i>	<i>1,000 Layers</i>
Dec ¹	341,243	341,131	339,789	345,960
Jan	340,885	341,996	338,550	348,142
Feb	339,529	341,661	339,647	348,985
Mar	339,434	340,971	341,700	347,272
Apr	338,809	339,268	342,612	344,041
May	337,566	337,356	342,786	342,837
Jun	337,339	335,979	342,835	341,352
Jul	337,849	335,417	342,479	
Aug	338,397	335,565	342,983	
Sep	339,511	335,426	344,118	
Oct	340,461	336,557	345,056	
Nov	340,490	339,387	344,797	

¹ December preceding year.

**Eggs: Production During the Month by Type,
United States, 2004-05 ¹**

Month	Total Eggs		Table Eggs		Hatching Eggs	
	2004	2005	2004	2005	2004	2005
	<i>Million Eggs</i>	<i>Million Eggs</i>	<i>Million Eggs</i>	<i>Million Eggs</i>	<i>Million Eggs</i>	<i>Million Eggs</i>
Dec ²	7,554	7,728	6,492	6,643	1,063	1,085
Jan	7,386	7,617	6,323	6,518	1,063	1,100
Feb	6,901	6,919	5,895	5,906	1,007	1,014
Mar	7,547	7,727	6,453	6,599	1,095	1,129
Apr	7,358	7,384	6,284	6,288	1,074	1,097
May	7,513	7,558	6,393	6,425	1,120	1,133
Jun	7,289	7,342	6,209	6,247	1,080	1,095
Jul	7,557		6,455		1,102	
Aug	7,538		6,443		1,095	
Sep	7,344		6,282		1,063	
Oct	7,659		6,569		1,090	
Nov	7,482		6,435		1,047	
During Year	89,131		76,236		12,896	

¹ Totals may not add due to rounding.

² December preceding year.

**Layers and Eggs: Layers on Hand and Eggs Produced by Type,
and Forced Molt, United States, May-June 2004-05 ¹**

Item	Unit	2004	2005 ²	2005 as % of 2004
Layers During May	1,000			
All Layers		342,786	342,837	100
Table Egg Type		282,623	283,150	100
Hatching Egg Type		60,163	59,687	99
Broiler-Type Hatching		57,703	56,996	99
Egg-Type Hatching		2,460	2,691	109
Eggs per 100 Layers During May	Number			
All Layers		2,192	2,205	101
Table Egg Type		2,262	2,269	100
Hatching Egg Type		1,862	1,898	102
Broiler-Type Hatching		1,839	1,872	102
Egg-Type Hatching		2,398	2,453	102
Eggs Produced During May	Million			
All Layers		7,513	7,558	101
Table Egg Type		6,393	6,425	101
Hatching Egg Type		1,120	1,133	101
Broiler-Type Hatching		1,061	1,067	101
Egg-Type Hatching		59	66	112
Layers on Jun 1	1,000			
All Layers		343,233	342,813	100
Table Egg Type		282,987	283,373	100
Hatching Egg Type		60,246	59,440	99
Broiler-Type Hatching		57,828	56,737	98
Egg-Type Hatching		2,418	2,703	112
Eggs per 100 Layers on Jun 1	Number			
All Layers		70.3	70.9	101
Table Egg Type		72.6	72.9	100
Hatching Egg Type		59.6	61.5	103
Broiler-Type Hatching		58.9	60.8	103
Egg-Type Hatching		77.3	77.1	100
Forced Molt Layers on Jun 1	Percent			
Percent Being Molted		4.8	4.2	88
Percent with Molt Completed		23.1	23.0	100
Layers Sold for Slaughter During May	1,000	14,595	15,515	106
Layers Rendered, Died, Destroyed, Composted or Disappeared For Any Reason During May	1,000	7,962	7,265	91
Pullets on Jun 1	1,000	101,609	103,787	102
Pullets Added During May ³	1,000	25,205	24,968	99

¹ Totals may not add due to rounding.

² Revised.

³ Pullet chicks less than 3 days old added to pullet flocks.

**Layers and Eggs: Layers on Hand and Eggs Produced by Type,
and Forced Molt, United States, June-July 2004-05 ¹**

Item	Unit	2004	2005	2005 as % of 2004
Layers During Jun	1,000			
All Layers		342,835	341,352	100
Table Egg Type		282,966	282,325	100
Hatching Egg Type		59,869	59,027	99
Broiler-Type Hatching		57,529	56,380	98
Egg-Type Hatching		2,340	2,647	113
Eggs per 100 Layers During Jun	Number			
All Layers		2,126	2,151	101
Table Egg Type		2,194	2,213	101
Hatching Egg Type		1,804	1,855	103
Broiler-Type Hatching		1,783	1,834	103
Egg-Type Hatching		2,308	2,304	100
Eggs Produced During Jun	Million			
All Layers		7,289	7,342	101
Table Egg Type		6,209	6,247	101
Hatching Egg Type		1,080	1,095	101
Broiler-Type Hatching		1,026	1,034	101
Egg-Type Hatching		54	61	113
Layers on Jul 1	1,000			
All Layers		342,392	339,851	99
Table Egg Type		282,924	281,252	99
Hatching Egg Type		59,468	58,599	99
Broiler-Type Hatching		57,217	56,013	98
Egg-Type Hatching		2,251	2,586	115
Eggs per 100 Layers on Jul 1	Number			
All Layers		71.3	72.3	101
Table Egg Type		73.6	74.4	101
Hatching Egg Type		60.2	62.1	103
Broiler-Type Hatching		59.6	61.4	103
Egg-Type Hatching		76.9	77.2	100
Forced Molt Layers on Jul 1	Percent			
Percent Being Molted		4.6	3.3	72
Percent with Molt Completed		24.0	22.7	95
Layers Sold for Slaughter During Jun	1,000	16,101	16,364	102
Layers Rendered, Died, Destroyed, Composted or Disappeared For Any Reason During Jun	1,000	8,138	7,181	88
Pullets on Jul 1	1,000	104,149	103,206	99
Pullets Added During Jun ²	1,000	25,628	22,968	90

¹ Totals may not add due to rounding.

² Pullet chicks less than 3 days old added to pullet flocks.

**Layers and Eggs: Layers on Hand and Eggs Produced by State
and United States, During May 2004-05**

State	Table Egg Layers in Flocks 30,000 and Above		All Layers ¹		Eggs per 100 for All Layers ¹	
	2004	2005 ²	2004	2005 ²	2004	2005 ²
	<i>1,000</i>	<i>1,000</i>	<i>1,000</i>	<i>1,000</i>	<i>Number</i>	<i>Number</i>
AL	1,863	1,691	9,334	9,069	1,907	1,919
AR	4,759	3,927	16,345	14,656	1,958	1,917
CA	19,463	19,296	20,014	19,795	2,203	2,228
CO	3,376	3,220	3,876	3,761	2,348	2,393
CT	2,844	3,079	2,901	3,138	2,447	2,326
FL	10,854	10,402	11,376	10,880	2,294	2,335
GA	10,978	9,871	20,106	19,180	2,069	2,070
HI	463	454	502	486	2,032	1,934
IL	3,557	4,064	3,778	4,292	2,065	2,400
IN	22,623	22,670	23,397	23,413	2,282	2,247
IA	42,877	48,300	43,567	49,063	2,220	2,211
ME	3,970	3,595	4,010	3,660	2,369	1,120
MD	2,971	2,832	3,082	2,952	2,401	2,134
MI	7,047	7,757	7,309	8,018	2,353	2,345
MN	10,203	10,413	10,731	10,961	2,311	2,317
MS	1,827	1,651	6,969	7,225	1,923	1,979
MO	5,539	6,002	6,848	7,345	2,205	2,301
NE	11,535	11,854	11,610	11,929	2,291	2,322
NY	3,582	3,789	3,918	4,117	2,450	2,453
NC	3,394	3,270	11,030	11,008	1,967	2,008
OH	27,839	27,532	28,327	28,010	2,199	2,292
OK	1,874	1,811	4,077	3,895	1,913	1,951
OR	2,758	2,797	2,940	2,984	2,313	2,413
PA	22,321	21,612	24,082	23,418	2,300	2,387
SC	4,157	3,735	5,226	4,917	2,028	2,034
SD	3,344	2,821	3,544	2,921	2,342	2,191
TX	13,886	12,803	18,319	17,224	2,222	2,218
VA	1,272	1,420	3,327	3,336	1,894	2,128
WA	4,842	4,888	4,912	4,956	2,382	2,361
WI	3,953	4,220	4,484	4,710	2,163	2,229
Oth Sts ³	16,565	15,422	22,845	21,518	2,176	2,231
US	276,536	277,198	342,786	342,837	2,192	2,205

¹ Includes all layers and eggs produced in both table egg and hatching egg flocks regardless of size.

² Revised.

³ Not published separately to avoid disclosing data for individual operations.

**Layers and Eggs: Layers on Hand and Eggs Produced by State
and United States, During June 2004-05**

State	Table Egg Layers in Flocks 30,000 and Above		All Layers ¹		Eggs per 100 for All Layers ¹	
	2004	2005	2004	2005	2004	2005
	<i>1,000</i>	<i>1,000</i>	<i>1,000</i>	<i>1,000</i>	<i>Number</i>	<i>Number</i>
AL	1,760	1,798	9,430	9,191	1,813	1,882
AR	4,680	4,006	16,013	14,653	1,880	1,897
CA	19,660	19,180	20,171	19,676	2,152	2,170
CO	3,360	3,247	3,895	3,765	2,259	2,284
CT	2,805	3,050	2,858	3,108	2,309	2,284
FL	11,008	10,381	11,553	10,877	2,112	2,216
GA	11,098	9,829	20,197	19,072	2,025	2,040
HI	466	458	504	488	1,925	1,906
IL	3,626	4,302	3,849	4,532	2,052	2,273
IN	22,774	22,565	23,531	23,293	2,197	2,220
IA	43,513	47,229	44,204	47,989	2,142	2,159
ME	3,398	4,142	3,444	4,206	2,323	1,070
MD	3,020	2,818	3,141	2,939	2,197	2,178
MI	7,220	7,767	7,476	8,024	2,274	2,331
MN	10,078	10,310	10,616	10,838	2,251	2,251
MS	1,731	1,604	6,849	6,976	1,913	1,978
MO	5,574	5,917	6,901	7,270	2,159	2,242
NE	11,491	11,844	11,566	11,919	2,239	2,240
NY	3,707	3,875	4,035	4,204	2,354	2,307
NC	3,376	3,176	10,913	10,811	1,897	1,961
OH	27,818	27,474	28,303	27,955	2,152	2,200
OK	1,873	1,811	4,050	3,875	1,877	1,935
OR	2,784	2,785	2,957	2,975	2,232	2,420
PA	22,432	21,193	24,189	22,988	2,270	2,340
SC	4,107	3,704	5,274	5,018	1,991	1,973
SD	3,335	2,914	3,535	3,014	2,235	2,157
TX	13,626	12,859	18,016	17,215	2,159	2,178
VA	1,280	1,463	3,290	3,331	1,854	2,192
WA	4,830	4,928	4,897	4,994	2,308	2,323
WI	3,928	4,328	4,433	4,814	2,188	2,243
Oth Sts ²	16,522	15,418	22,745	21,342	2,110	2,151
US	276,880	276,375	342,835	341,352	2,126	2,151

¹ Includes all layers and eggs produced in both table egg and hatching egg flocks regardless of size.

² Not published separately to avoid disclosing data for individual operations.

**Egg Production: By Type, State, and United States,
May 2004-05¹**

State	Total Production		Table Eggs ²		Hatching Eggs ²	
	2004	2005 ³	2004	2005 ³	2004	2005 ³
	<i>Million Eggs</i>	<i>Million Eggs</i>	<i>Million Eggs</i>	<i>Million Eggs</i>	<i>Million Eggs</i>	<i>Million Eggs</i>
AL	178	174	43	35	135	139
AR	320	281	114	87	206	194
CA	441	441				
CO	91	90				
CT	71	73				
FL	261	254	251	246	10	8
GA	416	397	242	218	174	179
HI	10.2	9.4	10.2	9.4	0	0
IL	78	103	75	99	3	4
IN	534	526	521	513	13	13
IA	967	1,085				
ME	95	41				
MD	74	63	72	61	2	2
MI	172	188				
MN	248	254	240	246	8	8
MS	134	143	39	38	95	105
MO	151	169				
NE	266	277	266	277	0	0
NY	96	101				
NC	217	221	81	79	136	142
OH	623	642				
OK	78	76	44	42	34	34
OR	68	72	66	70	2	2
PA	554	559	537	541	17	18
SC	106	100	87	80	19	20
SD	83	64	83	64	0	0
TX	407	382				
VA	63	71	27	36	36	35
WA	117	117				
WI	97	105				
Oth Sts ⁴	497	480	400	384	97	96
US	7,513	7,558	6,393	6,425	1,120	1,133

¹ Totals may not add due to rounding.

² Data by type of flock not shown for some States to avoid disclosing individual operations.

³ Revised.

⁴ Not published separately to avoid disclosing data for individual operations.

**Egg Production: By Type, State, and United States,
June 2004-05 ¹**

State	Total Production		Table Eggs ²		Hatching Eggs ²	
	2004	2005	2004	2005	2004	2005
	<i>Million Eggs</i>	<i>Million Eggs</i>	<i>Million Eggs</i>	<i>Million Eggs</i>	<i>Million Eggs</i>	<i>Million Eggs</i>
AL	171	173	37	37	134	136
AR	301	278	106	91	195	187
CA	434	427				
CO	88	86				
CT	66	71				
FL	244	241	234	233	10	8
GA	409	389	240	216	169	173
HI	9.7	9.3	9.7	9.3	0	0
IL	79	103	76	100	3	3
IN	517	517	505	505	12	12
IA	947	1,036				
ME	80	45				
MD	69	64	67	62	2	2
MI	170	187				
MN	239	244	231	236	8	8
MS	131	138	39	38	92	100
MO	149	163				
NE	259	267	259	267	0	0
NY	95	97				
NC	207	212	77	75	130	137
OH	609	615				
OK	76	75	43	41	33	34
OR	66	72	64	70	2	2
PA	549	538	533	520	16	18
SC	105	99	85	77	20	22
SD	79	65	79	65	0	0
TX	389	375				
VA	61	73	28	38	33	35
WA	113	116				
WI	97	108				
Oth Sts ³	480	459	387	370	93	89
US	7,289	7,342	6,209	6,247	1,080	1,095

¹ Totals may not add due to rounding.

² Data by type of flock not shown for some States to avoid disclosing individual operations.

³ Not published separately to avoid disclosing data for individual operations.

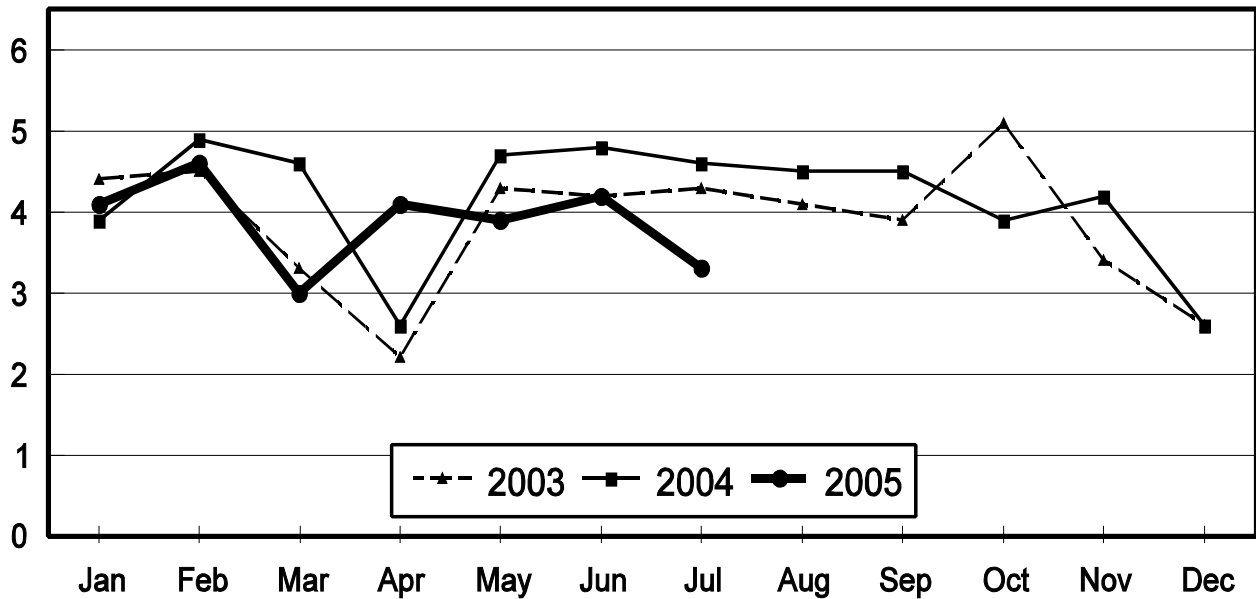
**Forced Molt: Percent of All Layers by Month,
United States, 2004-05 ¹**

Month	Percent Being Molted		Percent with Molt Completed	
	2004	2005	2004	2005
	<i>Percent</i>	<i>Percent</i>	<i>Percent</i>	<i>Percent</i>
Jan	3.9	4.1	22.8	23.2
Feb	4.9	4.6	22.7	21.7
Mar	4.6	3.0	23.4	22.8
Apr	2.6	4.1	23.4	22.6
May	4.7	4.0	22.2	22.3
Jun	4.8	4.2	23.1	23.0
Jul	4.6	3.3	24.0	22.7
Aug	4.5		23.4	
Sep	4.5		23.3	
Oct	3.9		23.6	
Nov	4.2		23.7	
Dec	2.6		23.7	

¹ As of first of month.

**All Layers: Percent Being Molted
United States, 2003 - 2005
First of the Month**

Percent



**Forced Molt: Percent of All Layers by State
and United States, July 2004-05 ¹**

State	Percent Being Molted		Percent with Molt Completed	
	2004	2005	2004	2005
	<i>Percent</i>	<i>Percent</i>	<i>Percent</i>	<i>Percent</i>
AL	2.0	1.5	2.5	4.5
AR	0.5	0.5	11.5	9.5
CA	7.5	4.0	29.0	33.0
CO	3.0	3.0	24.0	27.0
CT	5.5	0.0	9.5	9.0
FL	3.0	6.5	28.0	25.0
GA	4.0	4.0	18.5	15.0
HI	7.0	6.5	50.5	52.0
IL	3.5	7.0	43.5	24.5
IN	4.5	3.0	29.0	28.0
IA	6.5	3.0	37.5	37.0
ME	0.0	0.0	0.0	0.0
MD	6.5	5.5	15.0	35.0
MI	5.0	1.5	34.3	35.0
MN	4.5	1.5	24.0	21.5
MS	2.0	1.0	11.0	10.0
MO	0.0	3.5	19.5	18.0
NE	6.0	9.0	20.0	21.0
NY	5.5	7.0	2.0	3.0
NC	2.0	0.0	9.0	9.5
OH	9.0	4.0	24.5	18.5
OK	0.0	0.0	5.0	5.0
OR	7.0	7.5	36.0	31.5
PA	2.5	2.0	16.5	17.0
SC	2.5	5.0	32.5	22.0
SD	8.5	3.0	29.5	21.0
TX	2.5	3.5	20.5	19.0
VA	2.5	0.0	20.0	14.5
WA	8.6	9.0	45.5	37.5
WI	7.0	0.0	31.5	26.0
Oth Sts ²	3.9	3.8	28.3	27.9
US	4.6	3.3	24.0	22.7

¹ As of first of month.

² Not published separately to avoid disclosing data for individual operations.

**Hatchery Production: Eggs in Incubators, Chicks Hatched,
and Placements by Type, United States, June-July 2004-05**

Item	2004	2005	2005 as % of 2004
	<i>1,000</i>	<i>1,000</i>	<i>Percent</i>
Egg-Type			
Eggs in Incubators on Jul 1	35,588	32,991	93
Chicks Hatched During Jun	37,508	34,537	92
Chicks Hatched Jan thru Jun	217,944	223,945	103
Pullets Hatched During Jun for Intended Placements in Hatchery Supply Flocks	212	184	87
7-18 Month Earlier ¹	3,139	3,006	96
Broiler-Type			
Eggs in Incubators on Jul 1	659,248	657,631	100
Chicks Hatched During Jun	786,603	796,001	101
Chicks Hatched Jan thru Jun	4,666,036	4,752,269	102
Pullets Hatched During Jun for Intended Placements in Hatchery Supply Flocks	6,890	7,109	103
7-15 Months Earlier ²	61,930	63,008	102

¹ 2005 includes pullet chicks hatched Dec 2003 through Nov 2004.

² 2005 includes pullet chicks hatched Mar 2004 through Nov 2004.

**Egg-Type Eggs in Incubators: By Region and United States,
July 1, 2004-05**

Region	2004	2005	2005 as % of 2004
	<i>1,000</i>	<i>1,000</i>	<i>Percent</i>
North Atlantic	4,948	4,666	94
E North Central	8,663	6,174	71
W North Central	8,755	8,709	99
South Atlantic	2,876	3,337	116
South Central	5,239	5,564	106
West	5,107	4,541	89
US	35,588	32,991	93

Regions:

North Atlantic = CT, ME, MA, NH, NJ, NY, PA, RI, VT.

E North Central = IL, IN, MI, OH, WI.

W North Central = IA, KS, MN, MO, NE, ND, SD.

South Atlantic = DE, FL, GA, MD, NC, SC, VA, WV.

South Central = AL, AR, KY, LA, MS, OK, TN, TX.

West = AK, AZ, CA, CO, HI, ID, MT, NM, NV, OR, UT, WA, WY.

**Egg-Type Chicks Hatched: By State and United States,
June 2004-05**

State	During June			Jan-Jun		
	2004	2005	2005 as % of 2004	2004	2005	2005 as % of 2004
	<i>1,000</i>	<i>1,000</i>	<i>Percent</i>	<i>1,000</i>	<i>1,000</i>	<i>Percent</i>
FL	641	443	69	3,813	4,207	110
GA	2,332	2,228	96	14,302	13,727	96
IN	4,770	5,205	109	29,791	30,739	103
IA	6,805	5,231	77	37,363	37,074	99
MN	843	1,125	133	5,559	6,283	113
PA	5,349	4,769	89	31,762	29,667	93
Oth Sts ¹	16,768	15,536	93	95,354	102,248	107
US	37,508	34,537	92	217,944	223,945	103

¹ Not published separately to avoid disclosing data for individual operations.

Egg-Type Chicks Hatched: By Month, United States, 2003-05

Month	By Months				Cumulative			
	2003	2004	2005	2005 as % of 2004	2003	2004	2005	2005 as % of 2004
	<i>1,000</i>	<i>1,000</i>	<i>1,000</i>	<i>Percent</i>	<i>1,000</i>	<i>1,000</i>	<i>1,000</i>	<i>Percent</i>
Jan	33,521	35,155	37,936	108	33,521	35,155	37,936	108
Feb	30,474	31,923	33,932	106	63,995	67,078	71,868	107
Mar	36,775	37,545	41,824	111	100,770	104,623	113,692	109
Apr	37,820	37,466	38,267	102	138,590	142,089	151,959	107
May	37,630	38,347	37,449	98	176,220	180,436	189,408	105
Jun	36,602	37,508	34,537	92	212,822	217,944	223,945	103
Jul	35,578	34,919			248,400	252,863		
Aug	33,199	36,854			281,599	289,717		
Sep	35,763	36,631			317,362	326,348		
Oct	34,812	34,866			352,174	361,214		
Nov	30,241	38,758			382,415	399,972		
Dec	33,588	37,332			416,003	437,304		

**Intended Placements: Egg-Type Pullet Chicks for Hatchery Supply
Flocks by Month and Total, United States, 2003-05 ¹**

Month	Pullet Chicks Hatched			2005 as % of 2004	Cumulative Potential Placements Relative to Current Supply Flocks 7-18 Months Earlier ²		
	2003	2004	2005		2004	2005	2006
	<i>1,000</i>	<i>1,000</i>	<i>1,000</i>	<i>Percent</i>	<i>1,000</i>	<i>1,000</i>	<i>1,000</i>
Jan	210	124	157	127	3,012	3,088	2,834
Feb	225	285	208	73	2,960	3,080	
Mar	319	401	314	78	2,927	3,210	
Apr	280	343	308	90	2,923	3,142	
May	289	157	190	121	3,047	3,100	
Jun	309	212	184	87	3,139	3,006	
Jul	230	222			3,198	2,995	
Aug	188	318			3,112	3,028	
Sep	273	205			3,172	2,951	
Oct	310	268			3,254	2,864	
Nov	319	225			3,317	2,829	
Dec	246	235			3,185	2,862	
Total	3,198	2,995					

¹ Reported by leading breeders. Coverage may not be 100 percent. Includes expected pullet chicks from eggs sold during the preceding month at the rate of 125 pullet chicks per 30 dozen case of eggs.

² For June 2005, includes breeder pullet chicks hatched Dec 2003 through Nov 2004. The 7-18 months represent the first laying cycle. Molting and additional laying cycles will increase the cumulative potential placements.

**Broiler-Type Eggs in Incubators: By Region
and United States, July 1, 2004-05**

Region	2004	2005	2005 as % of 2004
	<i>1,000</i>	<i>1,000</i>	<i>Percent</i>
North Atlantic	12,789	11,789	92
E North Central	8,334	9,006	108
W North Central	23,569	23,332	99
South Atlantic	236,795	237,755	100
South Central	352,556	349,815	99
West	25,205	25,934	103
US	659,248	657,631	100

**Broiler-Type Chicks Hatched: By State
and United States, June 2004-05**

State	During June			Jan-Jun		
	2004	2005	2005 as % of 2004	2004	2005	2005 as % of 2004
	<i>1,000</i>	<i>1,000</i>	<i>Percent</i>	<i>1,000</i>	<i>1,000</i>	<i>Percent</i>
AL	109,310	113,104	103	653,841	662,810	101
AR	113,733	112,040	99	674,291	671,846	100
DE	13,889	14,808	107	81,549	86,736	106
FL	4,873	4,901	101	29,200	28,944	99
GA	119,136	120,743	101	711,484	721,347	101
KY	26,140	25,401	97	150,590	153,143	102
LA	13,866	14,476	104	81,789	87,637	107
MD	31,496	31,496	100	187,030	187,174	100
MS	71,334	68,830	96	425,826	423,904	100
NC	66,710	66,766	100	394,566	399,151	101
OK	23,573	23,871	101	139,512	141,004	101
PA	12,629	14,011	111	77,085	85,310	111
SC	13,393	18,195	136	78,904	108,455	137
TX	54,765	55,678	102	324,230	330,388	102
VA	23,934	23,683	99	140,426	140,686	100
CA, MO, TN, & WV	64,623	65,565	101	380,229	392,363	103
19 Sts ¹	763,404	773,568	101	4,530,552	4,620,898	102
Oth Sts ²	23,199	22,433	97	135,484	131,371	97
US	786,603	796,001	101	4,666,036	4,752,269	102

¹ States in the weekly hatchery production estimating program.

² Not published separately to avoid disclosing data for individual operations.

Broiler-Type Chicks Hatched: By Month, United States, 2003-05

Month	By Months				Cumulative			
	2003	2004	2005	2005 as % of 2004	2003	2004	2005	2005 as % of 2004
	<i>1,000</i>	<i>1,000</i>	<i>1,000</i>	<i>Percent</i>	<i>1,000</i>	<i>1,000</i>	<i>1,000</i>	<i>Percent</i>
Jan	759,674	774,004	796,026	103	759,674	774,004	796,026	103
Feb	693,549	728,401	731,274	100	1,453,223	1,502,405	1,527,300	102
Mar	774,354	791,915	815,782	103	2,227,577	2,294,320	2,343,082	102
Apr	760,638	774,629	789,780	102	2,988,215	3,068,949	3,132,862	102
May	792,813	810,484	823,406	102	3,781,028	3,879,433	3,956,268	102
Jun	774,679	786,603	796,001	101	4,555,707	4,666,036	4,752,269	102
Jul	777,838	806,658			5,333,545	5,472,694		
Aug	784,107	810,285			6,117,652	6,282,979		
Sep	739,515	769,934			6,857,167	7,052,913		
Oct	735,235	756,895			7,592,402	7,809,808		
Nov	707,891	730,353			8,300,293	8,540,161		
Dec	780,321	793,090			9,080,614	9,333,251		

**Intended Placements: Broiler-Type Pullet Chicks for Hatchery
Supply Flocks by Month and Total, 2003-05 ¹**

Month	Pullet Chicks Hatched			2005 as % of 2004	Cumulative Potential Placements Relative to Current Supply Flocks 7-15 Months Earlier ²		
	2003	2004	2005		2004	2005	2006
	<i>1,000</i>	<i>1,000</i>	<i>1,000</i>	<i>Percent</i>	<i>1,000</i>	<i>1,000</i>	<i>1,000</i>
US Place- ments							
Jan	6,269	6,811	6,409	94	60,300	62,084	62,860
Feb	6,659	7,340	7,325	100	61,106	62,460	
Mar	6,888	6,815	7,077	104	61,421	62,794	
Apr	6,735	6,402	6,800	106	61,600	63,574	
May	7,323	7,590	7,783	103	61,643	63,220	
Jun	6,748	6,890	7,109	103	61,930	63,008	
Jul	7,071	6,688			62,020	62,965	
Aug	7,253	7,280			62,096	62,972	
Sep	6,654	7,758			62,113	62,707	
Oct	6,312	6,457			62,180	62,894	
Nov	6,946	7,128			61,511	63,006	
Dec	6,978	6,772			61,848	63,509	
Annual Total	81,836	83,931					
Total Place- ments ³							
Jan	7,388	7,812	7,804	100			
Feb	8,094	8,251	8,664	105			
Mar	8,400	7,801	8,709	112			
Apr	8,062	7,288	7,995	110			
May	8,604	8,693	8,995	103			
Jun	8,341	8,590	8,571	100			
Jul	8,555	8,003					
Aug	8,608	8,416					
Sep	8,338	9,184					
Oct	7,695	7,678					
Nov	8,246	8,411					
Dec	8,185	8,263					
Annual Total	98,516	98,390					

¹ Reported by leading breeders. Coverage may not be 100 percent. Includes expected pullet chicks from eggs sold during the preceding month at the rate of 125 pullet chicks per 30 dozen case of eggs.

² For Jun 2005, includes breeder pullet chicks hatched Mar 2004 through Nov 2004.

³ U.S. production of intended placements worldwide.

Procedures and Reliability

Data Sources: Primary data for the "**Chickens and Eggs**" report are from weekly and/or monthly questionnaires sent to producers. An attempt is made to collect information for layer and egg estimates from each known contractor and independent producer who has at least 30,000 table egg layers, flocks of hatchery supply layers, or pullet only operations with at least 500 pullets. Coverage for operations with less than 30,000 table egg layers are estimated each month based on data reported in December. Approximately 900 contractors, independent egg producers, and pullet only operations are contacted each month. All known hatcheries, approximately 330, are contacted for information on a weekly and/or monthly basis.

Revisions: The previous month's estimates are subject to revision if late reports or corrected data indicates a different level. Additionally, revisions after the monthly report will be made at the end of the marketing year and published in the annual reports of "**Chickens and Eggs Summary**" and "**Hatchery Production**".

Procedures and Reliability: Operations are mailed a questionnaire and given adequate time to respond by mail. Those that do not respond are phoned. Great care is exercised to ensure that all operations are accounted for during each survey period. However, there are usually missing reports that must be accounted for in the estimates.

Sound statistical methodology is employed to derive estimates from the reported data. All data are checked for unusual values. All operations' data are compared to their own past operating profiles and also to trends from other operations. Data for missing operations are estimated based on similar operations or historical data. Survey data are subject to non-sampling errors such as omissions and mistakes in reporting and in processing. While these errors cannot be measured directly, they are minimized by reviewing all data for consistency and reasonableness.

Egg-type chicks hatched consist of all chicks of egg-type domesticated breeds including males and chicks destined for hatchery supply flocks and research purposes. The relationship of chicks hatched to chicken inventory and poultry marketings is carefully monitored. The disposition of egg-type chicks hatched prior to placement into the laying flock can vary significantly, which can make comparisons to changes in layer inventory inconsistent over time.

Intended placement data reported by leading breeders include pullet chicks expected from eggs sold the preceding month. The breeders in this report account for a large percentage of replacement pullets for hatchery supply flocks. Production of replacement pullets by these breeders indicates the number of pullets available to hatchery supply flocks several months before the pullets will actually move into the flocks. "Hatchery Supply Flocks" include all generations of layers which could lay eggs to supply a hatchery. This includes the generations of parents, grandparents, great-grandparents, pedigree, etc. Also included are research flocks, vaccine flocks, and specific pathogen-free flocks. The broiler cumulative potential placements are a moving total of the intended placements 7-15 months earlier. The egg-type cumulative potential placements of 7-18 months represent the first laying cycle. Molting and additional laying cycles will increase the cumulative potential placements of egg-type hatching flocks.

ACCESS TO REPORTS!!

For your convenience, there are several ways to obtain NASS reports, data products, and services:

INTERNET ACCESS

All NASS reports are available free of charge on the worldwide Internet. For access, connect to the Internet and go to the NASS Home Page at: www.usda.gov/nass/. Select "Today's Reports" or Publications and then Reports Calendar or Publications and then Search, by Title or Subject.

E-MAIL SUBSCRIPTION

All NASS reports are available by subscription free of charge direct to your e-mail address. Starting with the NASS Home Page at www.usda.gov/nass/, click on **Publications**, then click on the **Subscribe by E-mail** button which takes you to the page describing e-mail delivery of reports. Finally, click on **Go to the Subscription Page** and follow the instructions.

PRINTED REPORTS OR DATA PRODUCTS

CALL OUR TOLL-FREE ORDER DESK: 800-999-6779 (U.S. and Canada)
Other areas, please call 703-605-6220 FAX: 703-605-6900
(Visa, MasterCard, check, or money order acceptable for payment.)

ASSISTANCE

For **assistance** with general agricultural statistics or further information about NASS or its products or services, contact the **Agricultural Statistics Hotline** at **800-727-9540**, 7:30 a.m. to 4:00 p.m. ET, or e-mail: nass@nass.usda.gov.

The U.S. Department of Agriculture (USDA) prohibits discrimination in all its programs and activities on the basis of race, color, national origin, sex, religion, age, disability, political beliefs, sexual orientation, and marital or family status. (Not all prohibited bases apply to all programs.) Persons with disabilities who require alternative means for communication of program information (Braille, large print, audiotape, etc.) should contact USDA's TARGET Center at 202-720-2600 (voice and TDD).

To file a complaint of discrimination, write USDA, Director, Office of Civil Rights, Room 326-W, Whitten Building, 14th and Independence Avenue, SW, Washington, DC 20250-9410 or call 202-720-5964 (voice and TDD). USDA is an equal opportunity provider and employer.